



# United States Department of the Interior

MINERALS MANAGEMENT SERVICE  
Alaska Outer Continental Shelf Region  
3801 Centerpoint Drive, Suite 500  
Anchorage, Alaska 99503-5820

## **DATA ANNOUNCEMENT** **Minerals Management Service**

**Outer Continental Shelf Permit 75-33**  
**Contract 14-08-0001-16429**

### **MULTI-CHANNEL SEISMIC REFLECTION DATA** **LOWER COOK INLET – ALASKA**

From May 1, 1975, until June 15, 1975, Western Geophysical Company acquired 1,130 miles of multi-channel seismic reflection data for Standard Oil Company of California. These data were collected under Permit 75-33 issued by the Minerals Management Service (MMS). The MMS acquired these data on September 29, 1976, under Contract 14-08-0001-16429. Under the conditions of the contract and subsequent regulations, the data are now available to the public through the Marine Geology and Geophysics Division of the National Geophysical Data Center, Boulder, Colorado. They will be responsible for making copies and marketing these data.

Under Permit 75-33, one vessel was used. The M/V Sitkin used an Aquapulse as the energy source. The Aquapulse is a pressure vessel into which propane and oxygen are introduced and detonated with a spark. The resulting explosion creates a pressure wave. The energy source was suspended from the vessel at a depth of 35 feet. The navigation for this survey was a Raydist D.R.S. system for long range and a Motorola R.P.S. short range system.

The M/V Sitkin towed two streamers. The mini-cable was a 660-foot streamer with 12 groups of hydrophones and a 55-foot group interval. The main cable was 8,876 feet long with 72 groups of hydrophones. Data were collected at a 4-millisecond sample rate with a 6-second record length. The streamers were towed at a depth of 40 feet.

The mini-cable data were processed in a 3-fold stack. The main cable data were processed in a 36-fold stack. A small scale map that displays the data coverage is included with this announcement. The specific data that will be released are as follows.

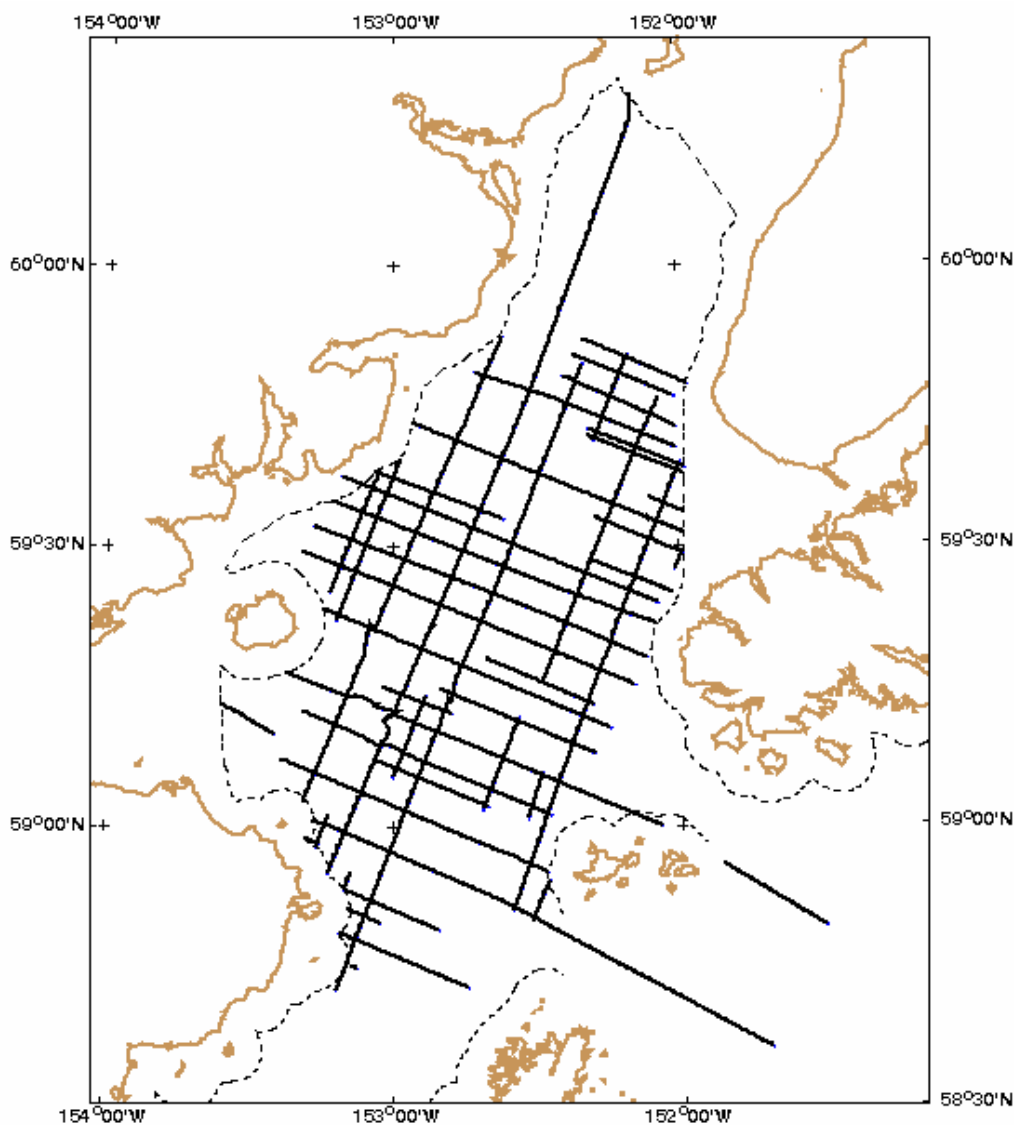
#### **DATA AVAILABLE**

The seismic reflection profiles displayed in an automatic gain control format can be supplied as plastic sepia, paper sepia, and/or blackline prints.

Velocity plots have been scanned and recorded on CD-ROM.

A navigation map is available as a reproducible or paper copy.  
Digital navigation data are available on CD-ROM.

## Data Coverage Permit 75-33



For further information or expressions of interest in acquiring the data please contact:

Susan Banet  
Minerals Management Service  
3801 Centerpoint Drive, Suite 500  
Anchorage, Alaska 99503  
Fax: (907) 334-5322  
Phone: (907) 334-5323  
Email: [AKMMSRE@mms.gov](mailto:AKMMSRE@mms.gov)

or Robin Warnken  
NOAA-NGDC  
325 Broadway, Mail Code E/GC3  
Boulder, CO 80305  
Fax: (303) 497-6513  
Phone: (303) 497-6338  
Email: [Robin.R.Warnken@noaa.gov](mailto:Robin.R.Warnken@noaa.gov)

Additional data release announcements may be found at  
<http://www.mms.gov/alaska/re/relgg/INDEX.htm>