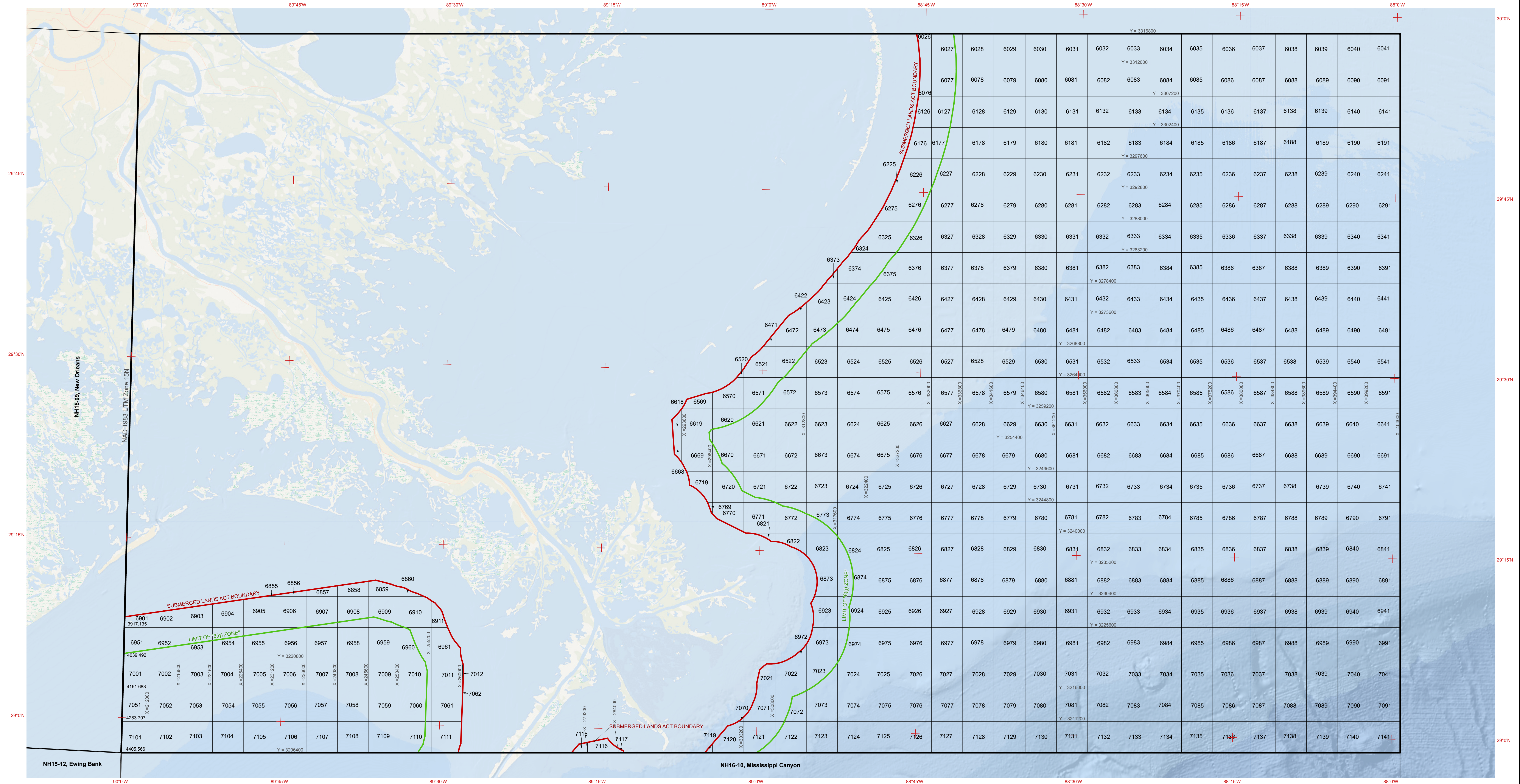


AREA OF IRREGULAR BLOCKS IN HECTARES

Block Number	Total Area
6901	1850.825979
6951	1909.597156
7001	1968.288616
7051	2026.900326
7101	2085.432251



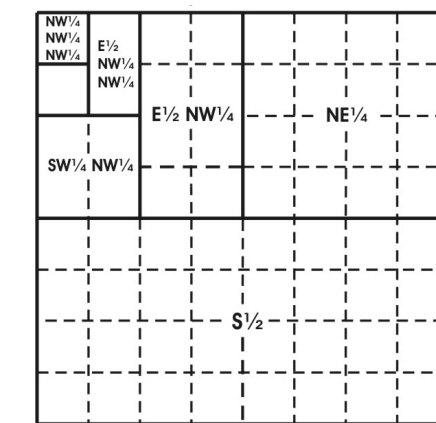
The boundaries of the regular blocks are 4,800 international meters on a side and contain 2,304 hectares. The regular boundaries are defined in terms of X and Y coordinates of the Universal Transverse Mercator Grid System based on the Geodetic Reference System (GRS) 1980 Ellipsoid.

Main Map background and Location Diagram background from Esri Ocean Basemap. Accessed February, 2023. For more information visit https://services.arcgis.com/arcgis/rest/services/Ocean/World_Ocean_Base/MapServer

The Submerged Lands Act Boundary and the Limit of (g) Zone depicted hereon reflect the approximate Federal position for Submerged Lands Act and OCS Lands Act purposes.

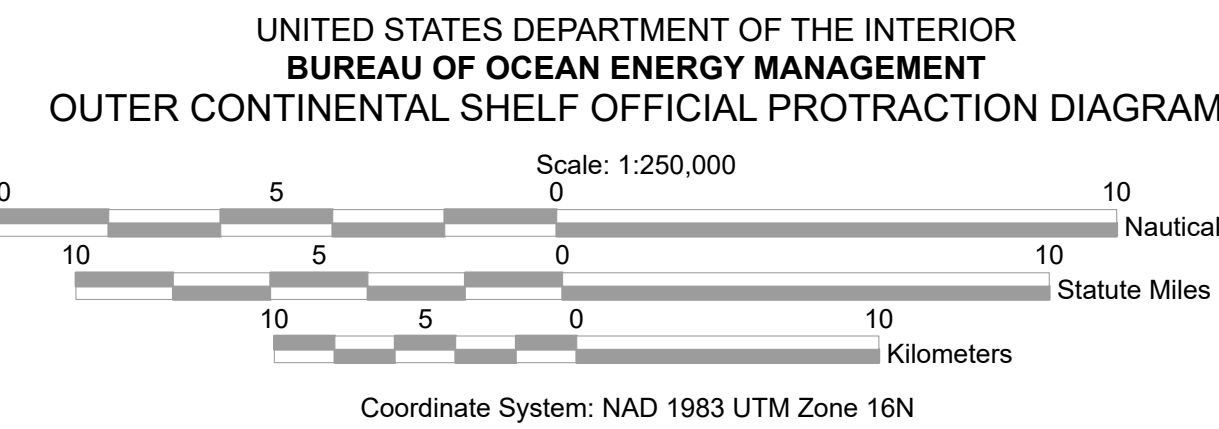
Areas and dimensions of the irregular blocks along the zone boundary are indicated.

Copies of these diagrams are available for download in PDF format from <https://www.boem.gov/gom83-cadastral-data>.

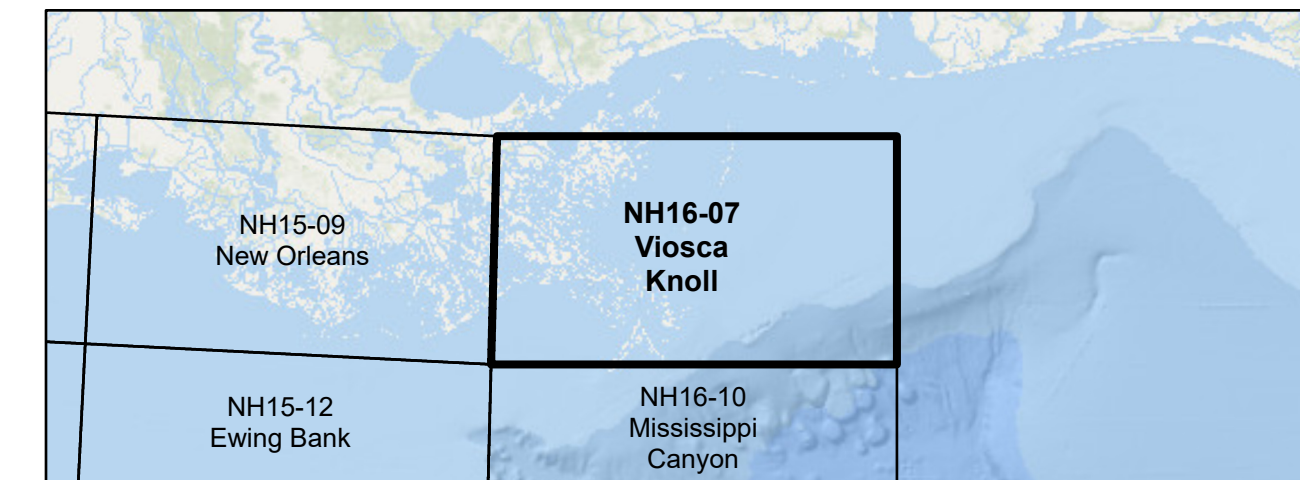


Subdivision of Blocks on the Outer Continental Shelf

Typical method of subdivision of the regular blocks, each subdivision being an aliquot part of the total, based on midpoint subdivision throughout.



LOCATION DIAGRAM



- LEGEND**
- Featured Protraction Outline
 - Protraction Outline
 - Submerged Lands Act Boundary
 - Limit of (g) Zone

This diagram is prepared in accordance with 30 CFR 256.8

For the Director

Beth A. Wenstrom

Beth A. Wenstrom

Chief, Geospatial Services Division, Office of Strategic Resources
Sterling, Virginia
Date: 11/1/2022