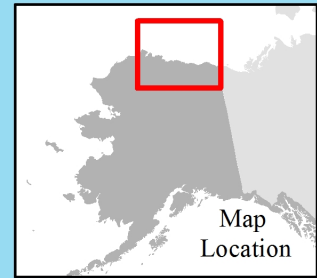


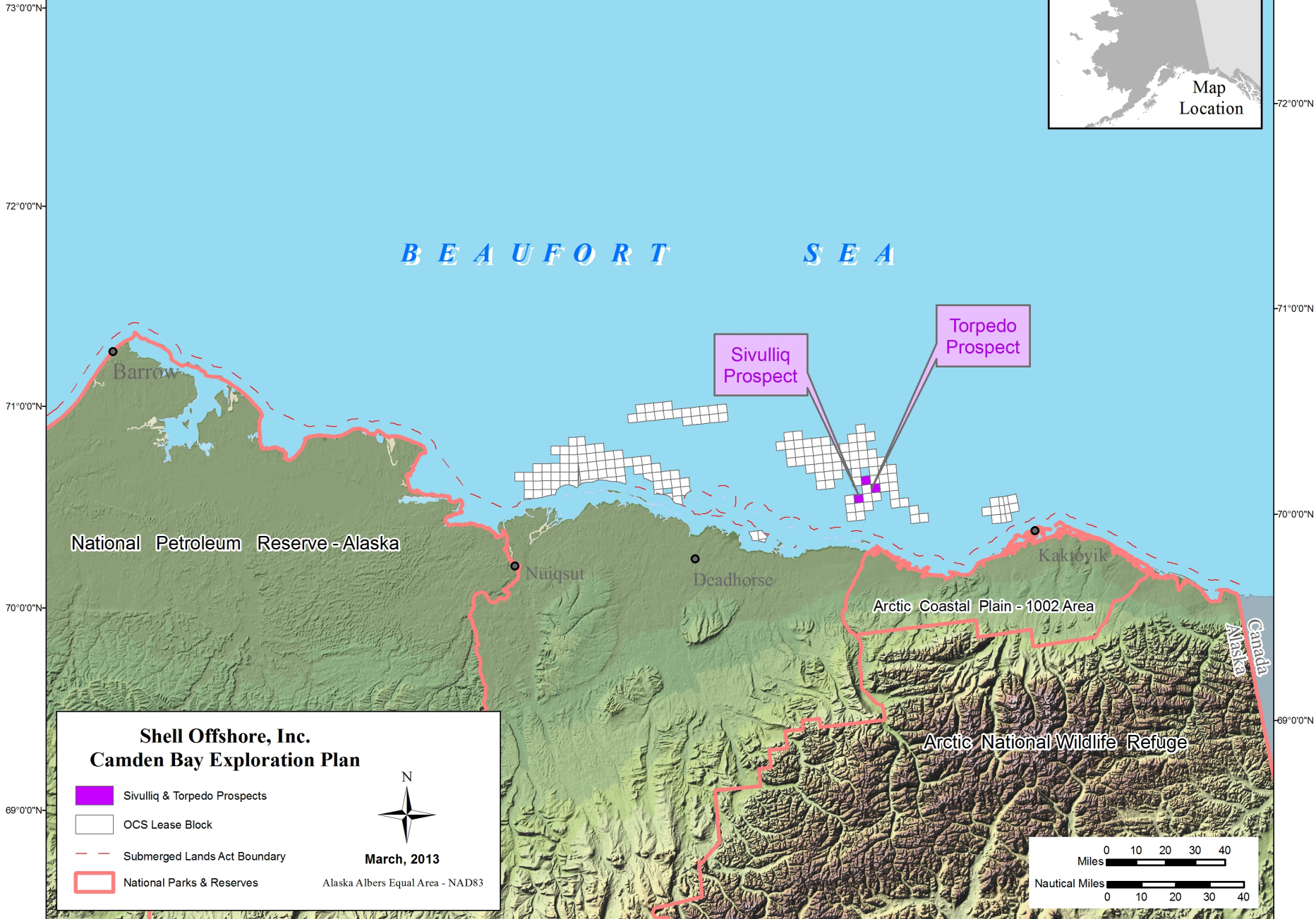
158°0'0"W 156°0'0"W 154°0'0"W 152°0'0"W 150°0'0"W 148°0'0"W 146°0'0"W 144°0'0"W 142°0'0"W 140°0'0"W



United States Department of the Interior  
BUREAU OF OCEAN ENERGY MANAGEMENT



Map Location



*BEAUFORT SEA*

Barrow

Sivulliq Prospect

Torpedo Prospect

National Petroleum Reserve - Alaska

Nuiqsut

Deadhorse

Kaktovik

Arctic Coastal Plain - 1002 Area

Arctic National Wildlife Refuge

Alaska  
Canada

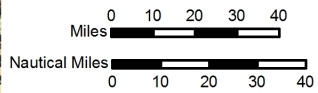
**Shell Offshore, Inc.  
Camden Bay Exploration Plan**

-  Sivulliq & Torpedo Prospects
-  OCS Lease Block
-  Submerged Lands Act Boundary
-  National Parks & Reserves



March, 2013

Alaska Albers Equal Area - NAD83



156°0'0"W 154°0'0"W 152°0'0"W 150°0'0"W 148°0'0"W 146°0'0"W 144°0'0"W 142°0'0"W