



United States  
Department of the Interior  
Minerals Management Service

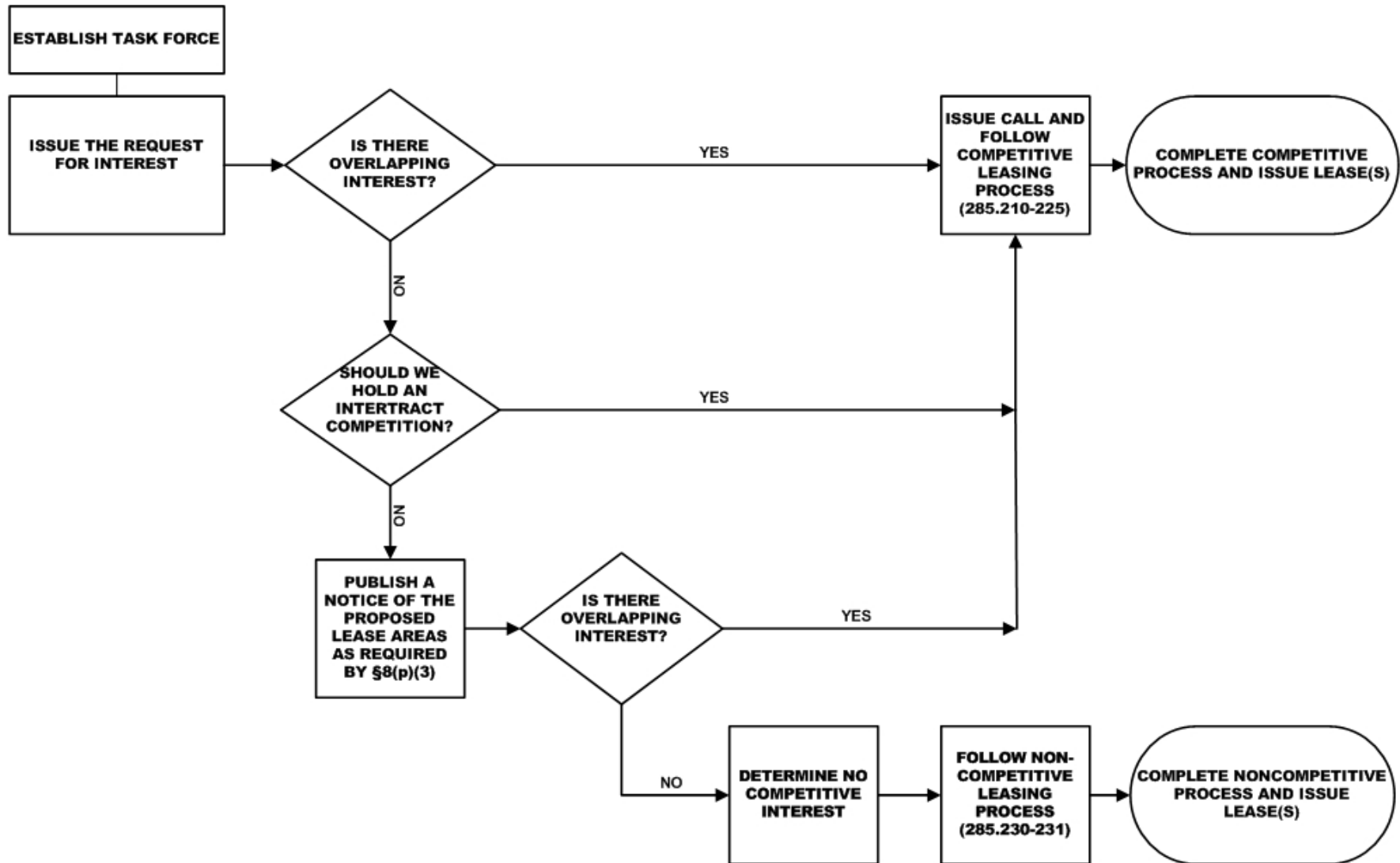
**MMS**

# Overview of MMS Leasing Process

MMS Delaware Task Force  
October 29, 2009 Lewes, Delaware

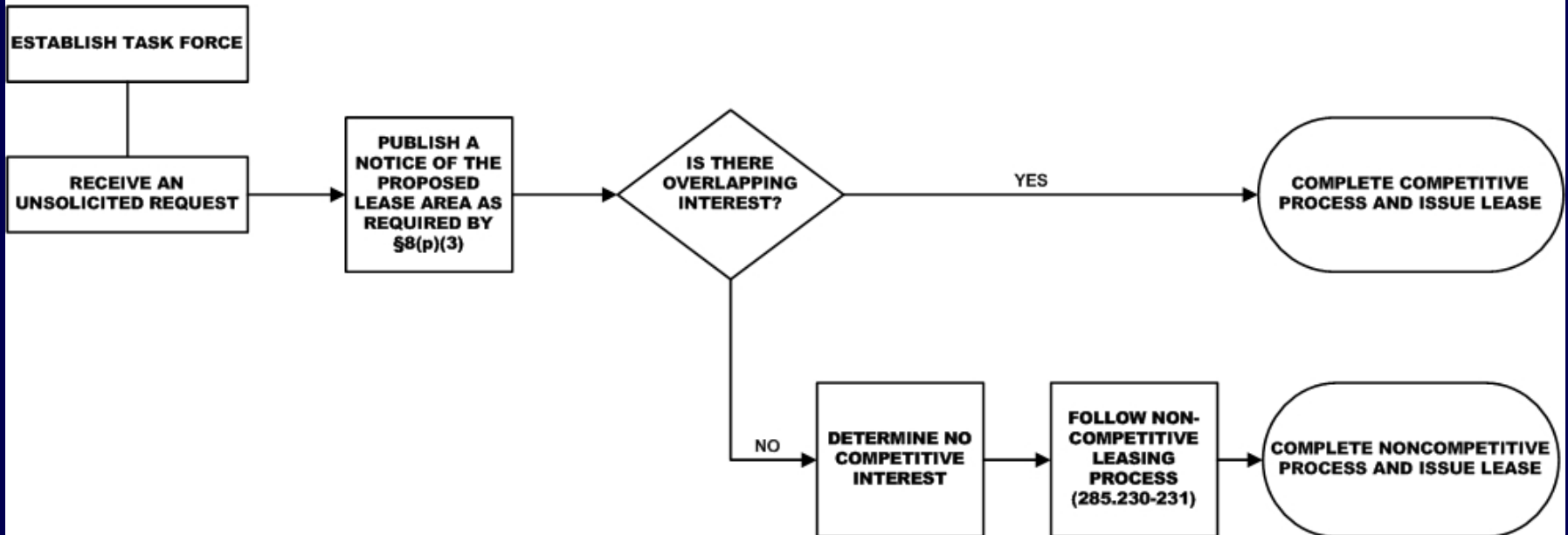
Timothy Redding, Program Analyst  
Renewable Energy Program

## STARTING THE COMMERCIAL WIND LEASE PROCESS WITH A REQUEST FOR INTEREST\*

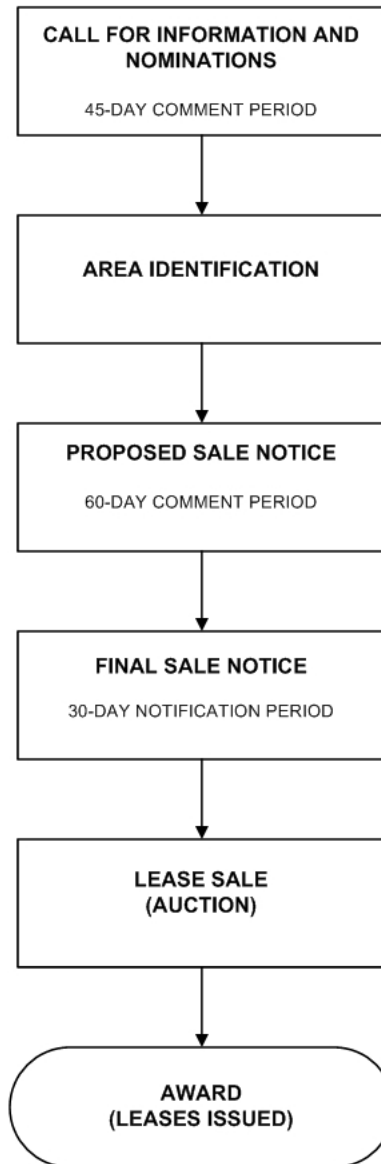


\*Depending on responses submitted by developers and determinations made by MMS, it is possible that the leasing process could be exclusively competitive, exclusively noncompetitive, or a mixture (competitive for some nominations and noncompetitive for others).

## STARTING THE COMMERCIAL WIND LEASE PROCESS WITH AN UNSOLICITED REQUEST



**PROCESS FOLLOWING MMS DETERMINATION OF COMPETITIVE INTEREST IN  
COMMERCIAL WIND LEASING AND DECISION TO HOLD A SALE**



**PROCESS FOLLOWING MMS FINAL DETERMINATION OF NO COMPETITIVE INTEREST FOR COMMERCIAL WIND LEASING**

