

# COASTAL AND MARINE DATA IN MAINE

SPATIAL DATA RELEVANT TO THE BOEMRE TASK FORCE

Prepared by the Maine State Planning Office, Maine Coastal Program  
September 14<sup>th</sup>, 2010



# COLLECTION PURPOSES

- Governor's Ocean Energy Task Force – L.D. 1465, P.L. 270
- Prior to the Siting Initiative Prompted By The Task Force, SPO had begun initial collection in October of 2008 for reference purposes
- Nature of the Collection
  - 1) Not Exhaustive - Impossible to be
  - 2) Dynamic – Data is always being updated
  - 3) Not Standardized – Different formats, different years, etc
  - 4) Layers come with different user “instructions”
  - 5) Continued Collection and Maintenance for Maine Coastal Atlas



# SOURCES

- Maine Office of GIS
- National Ocean and Atmospheric Administration
- United State Geological Survey
- Maine Geological Survey
- Maine Department of Marine Resources
- Maine Department of Inland Fisheries and Wildlife
- U.S. Fish and Wildlife Service
- The Right Whale Consortium
- Maine Public Utilities Commission
- Maine Department of Conservation



# CATEGORIZATION

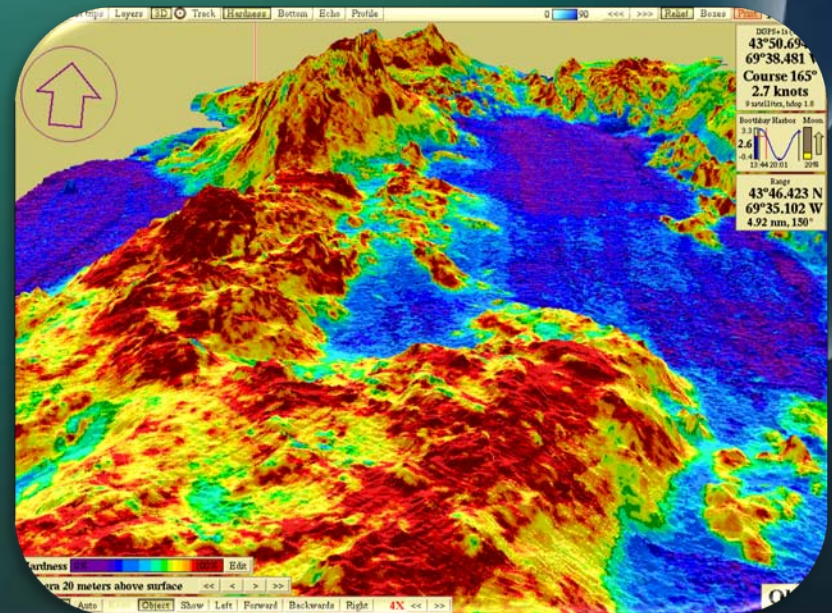
- **Geophysical Conditions and Habitat**
- **Fauna**
- **Human Uses/Alterations**
- **Political Boundaries/Viewshed**



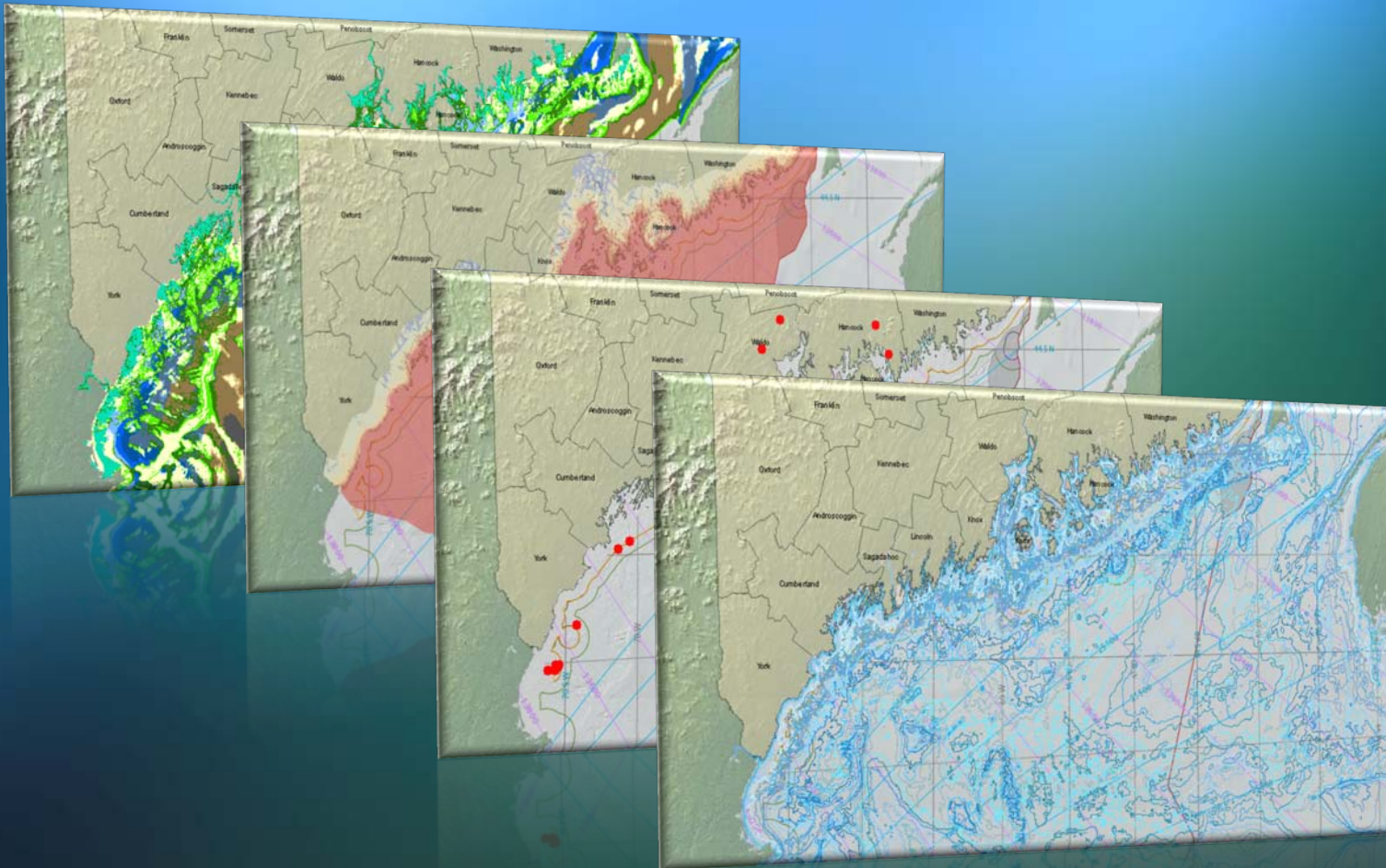


# GEOPHYSICAL CONDITIONS AND HABITAT

- Bathymetry
- High-Res Multi-beam Sonar
- Fathoms
- Technology Depths
- Eelgrass
- USFWS High Value Habitat
- National Renewable Energy Laboratory: 50, 80, 100M Wind Speeds
- Surficial Geology



# DATA SAMPLES



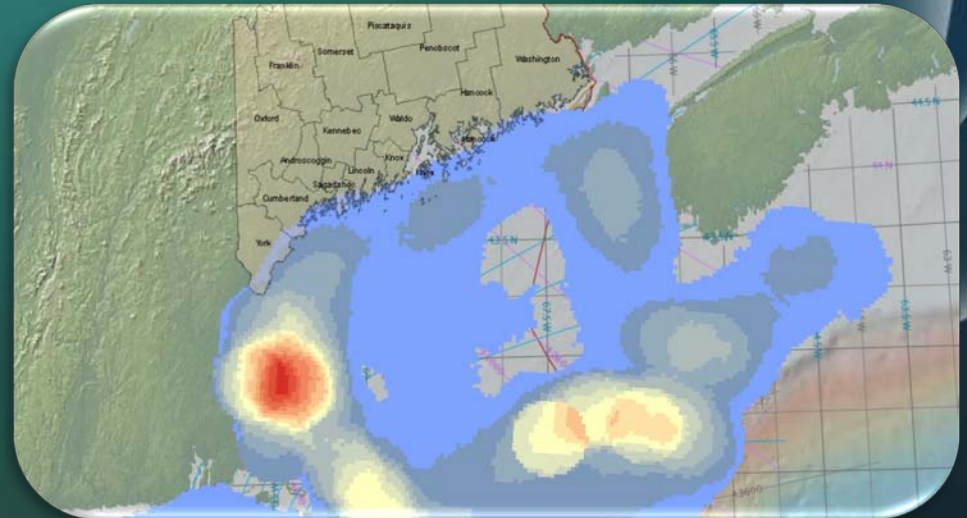


# FAUNA

- RTE Coastal Species
- Marine Mammals
- Eagles
- Marine Worms
- Insects
- Shellfish

## USE STIPULATIONS

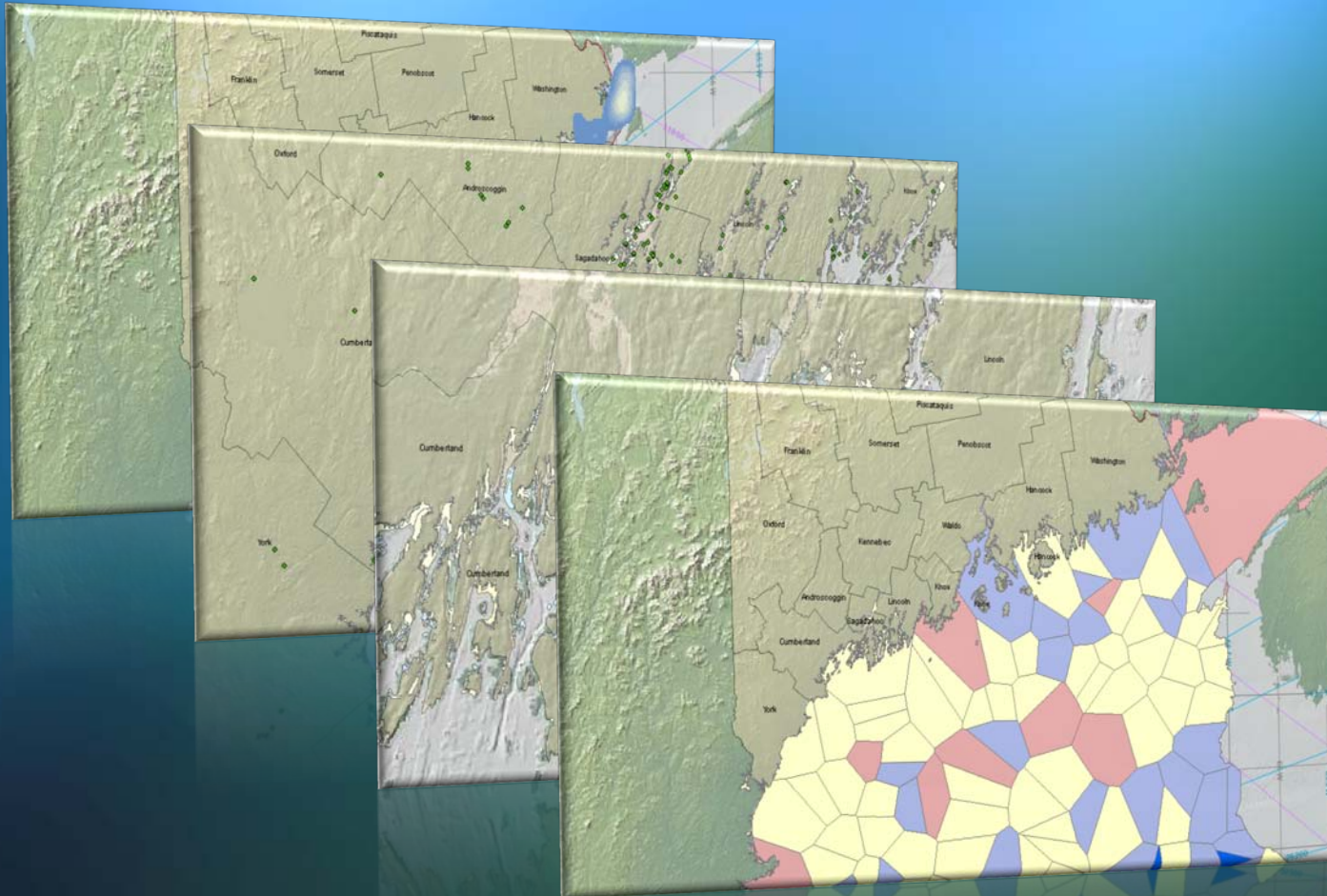
- Primarily Habitat and Sightings
- Limited Movements



Cod Landings, Gulf of Maine



# DATA SAMPLES



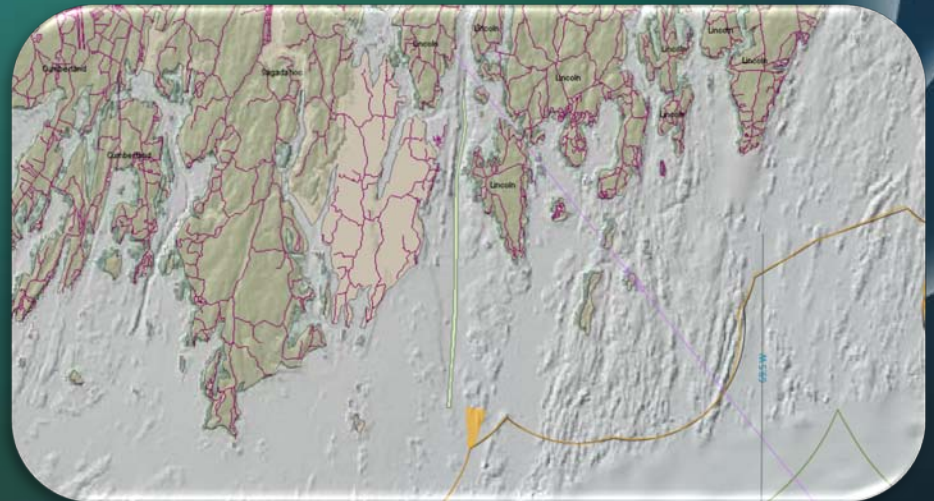


# HUMAN USES/ALTERATIONS

- Vessel Monitoring System Data
- Automated Information System Data
- Some Fishing Data
- Coastal Infrastructure
- Boating
- Shipping Channels

## USE STIPULATIONS

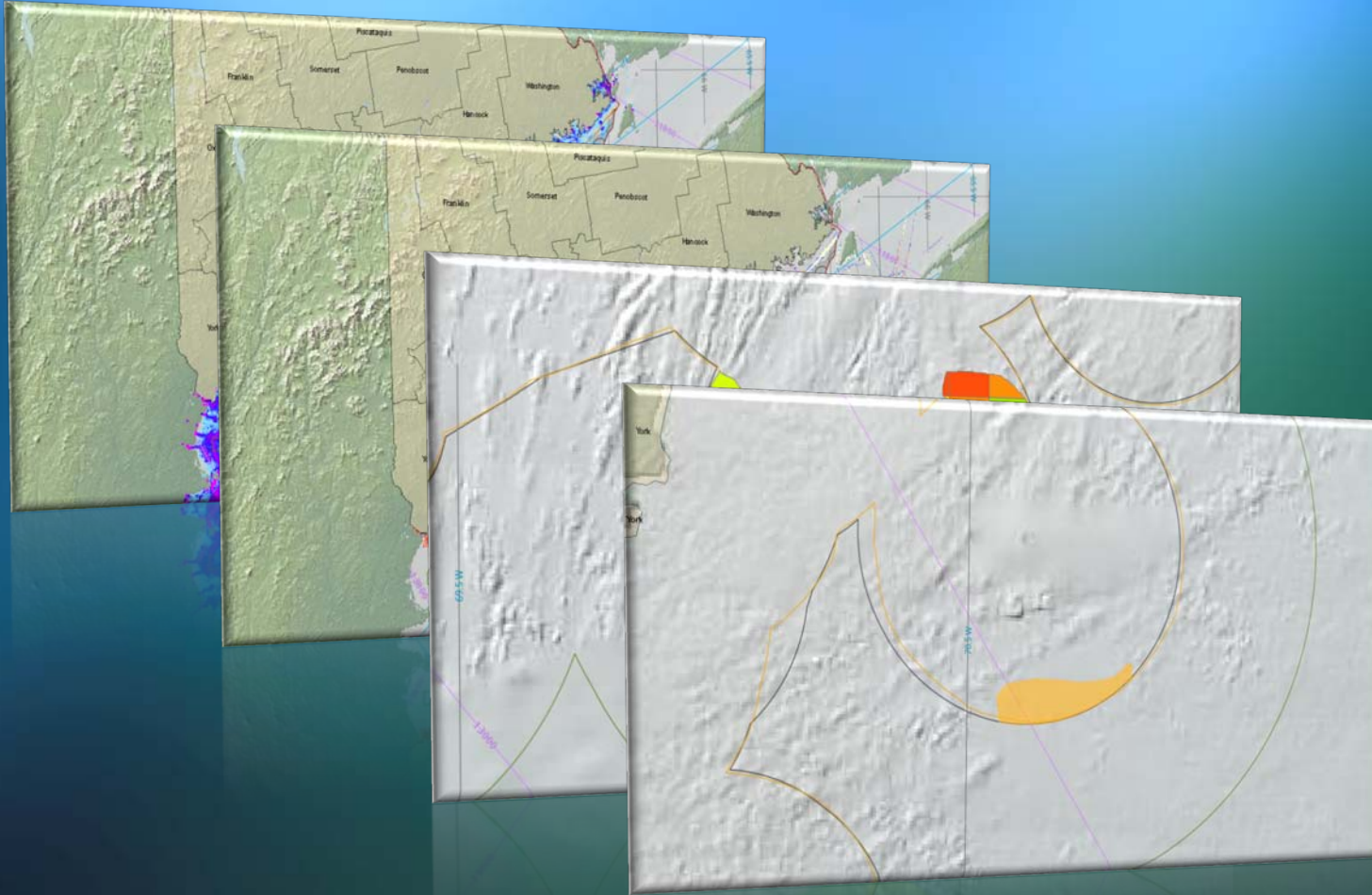
- NOT Exhaustive
- Not all useful for siting/spatial planning



Transportation, Pemquid Peninsula



# DATA SAMPLES



# POLITICAL BOUNDARIES/VIEWSHED

- National Historic Registry
- Maritime Boundaries
- BOEM Lease Blocks
- Parks, Rivers, Lakes
- Scenic Views
- LURC/DEP Jurisdictions

## USE STIPULATIONS

- NOT Exhaustive
- Not all useful for siting/spatial planning

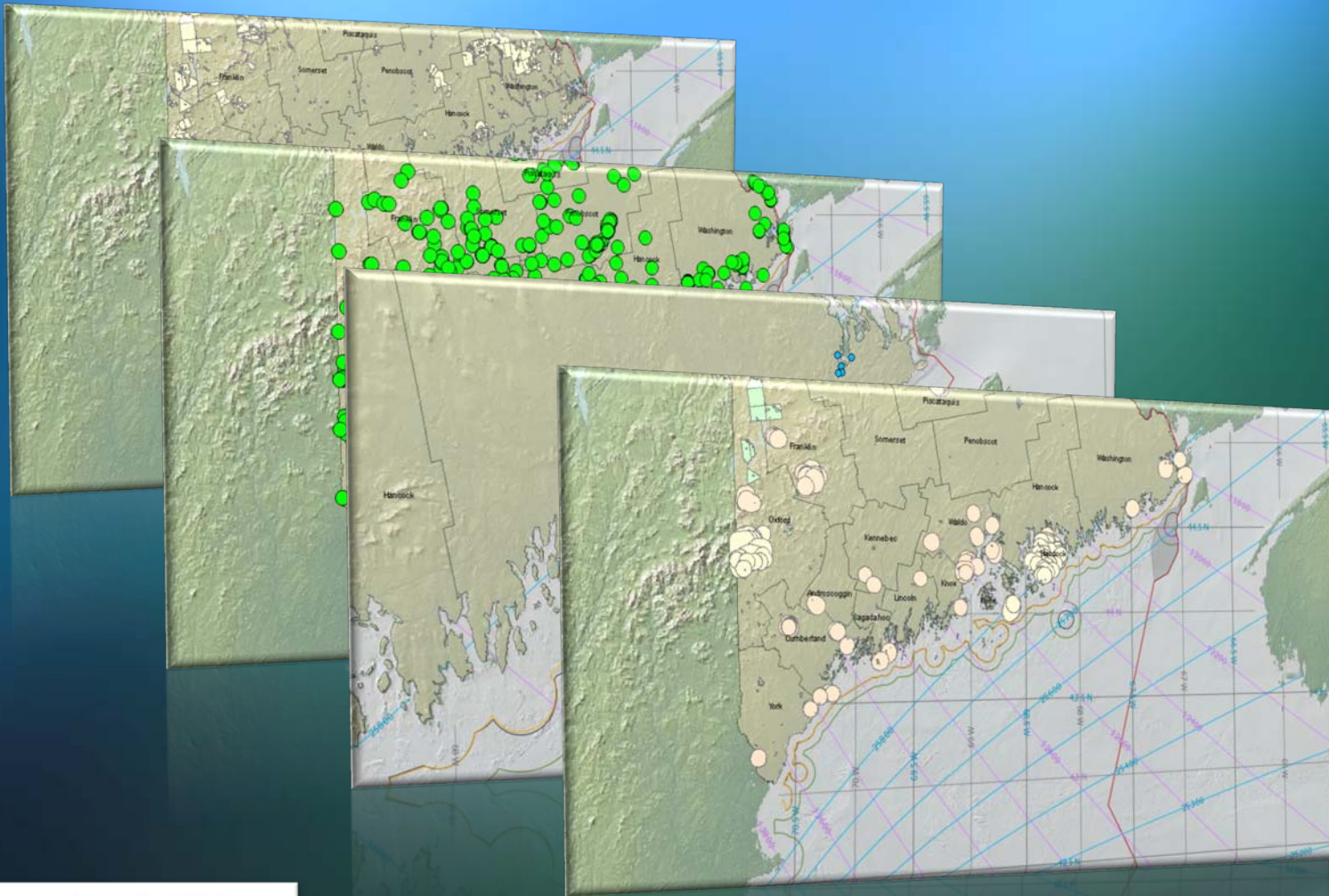


Lease Blocks and Ocean Boundaries





# DATA SAMPLES



# Questions, Comments, or Concerns?

Matthew Nixon  
(207) 624-6226  
[Matthew.E.Nixon@Maine.gov](mailto:Matthew.E.Nixon@Maine.gov)