

BUREAU OF OCEAN ENERGY MANAGEMENT (BOEM)

Commonwealth of Virginia Department of Mines, Minerals and Energy (DMME) Application Process

Virginia Task Force

Norfolk, Virginia

June 5, 2012

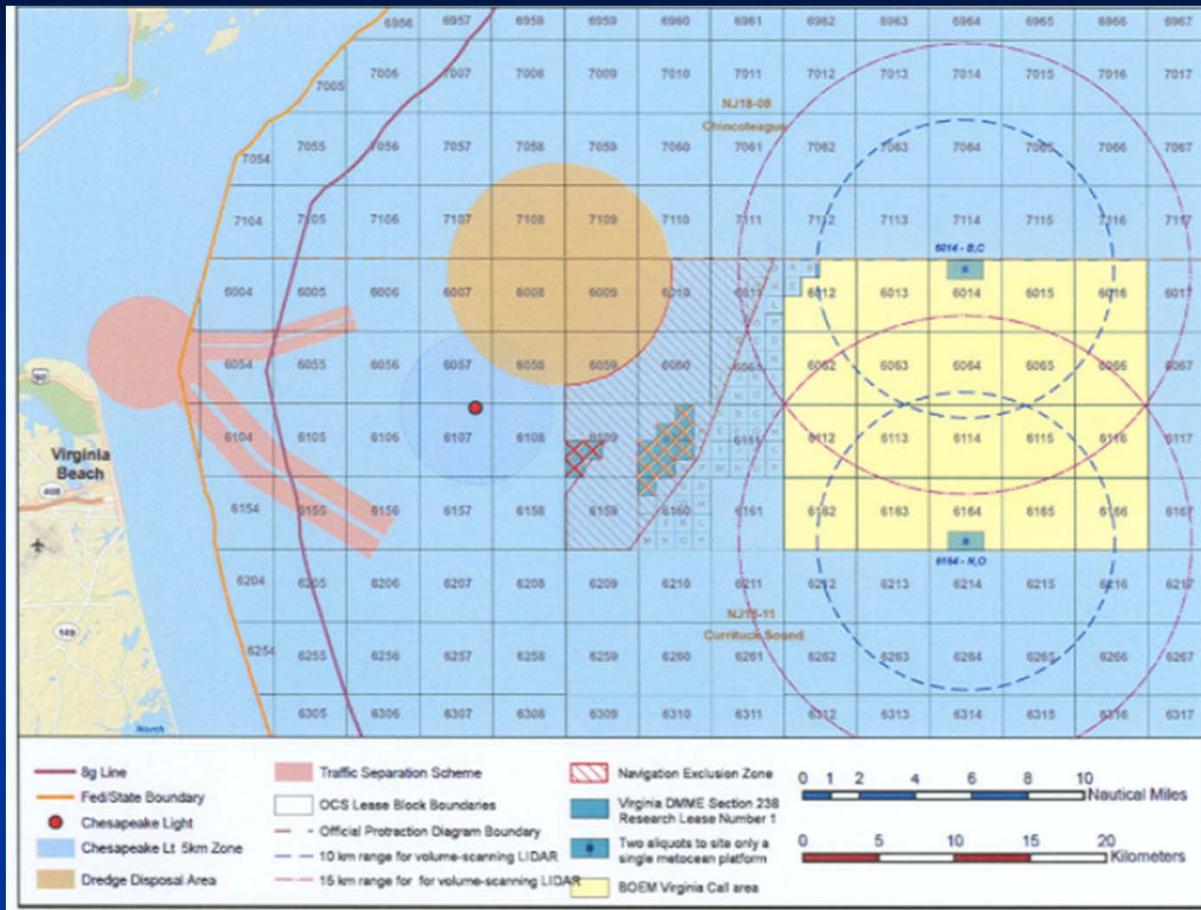
Casey Reeves, Project Coordinator



Overview

- BACKGROUND
- PROJECT PROPOSAL
- IMPACTS ON COMPETITIVE LEASING IN THE VIRGINIA WIND ENERGY AREA
- NEXT STEPS

BACKGROUND



- Draft research lease application submitted to BOEM; January 2011
- Revised research lease application submitted to BOEM; September 2011
- *Research Lease Number 1 for Met Towers in the Virginia Call Area* Submitted to BOEM; June 1, 2012

PROJECT PROPOSAL

- The current project proposal is for the installation of two meteorological towers in the Virginia WEA to qualify and quantify existing wind resources
- The current proposal does not include testing wind turbines

Source: *Commercial Wind Lease Issuance and Site Assessment Activities on the Atlantic Outer Continental Shelf (OCS) Offshore New Jersey, Delaware, Maryland, and Virginia (Final Environmental Assessment OCS EIS/EA BOEM 2012-003)*

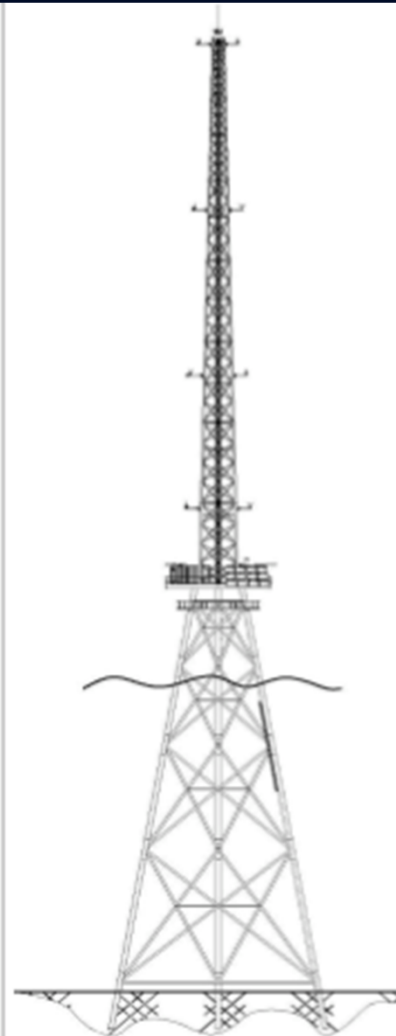


Figure 3.2(a) Example of a Lattice-type Mast Mounted on a Steel Jacket Foundation.

Source: Deepwater Wind, LLC.

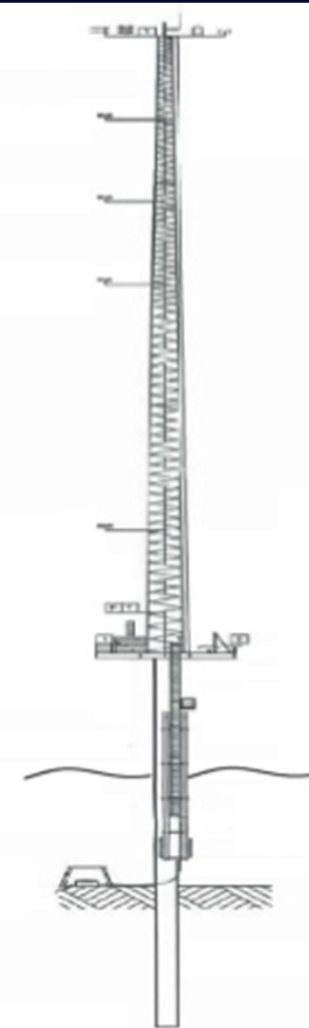
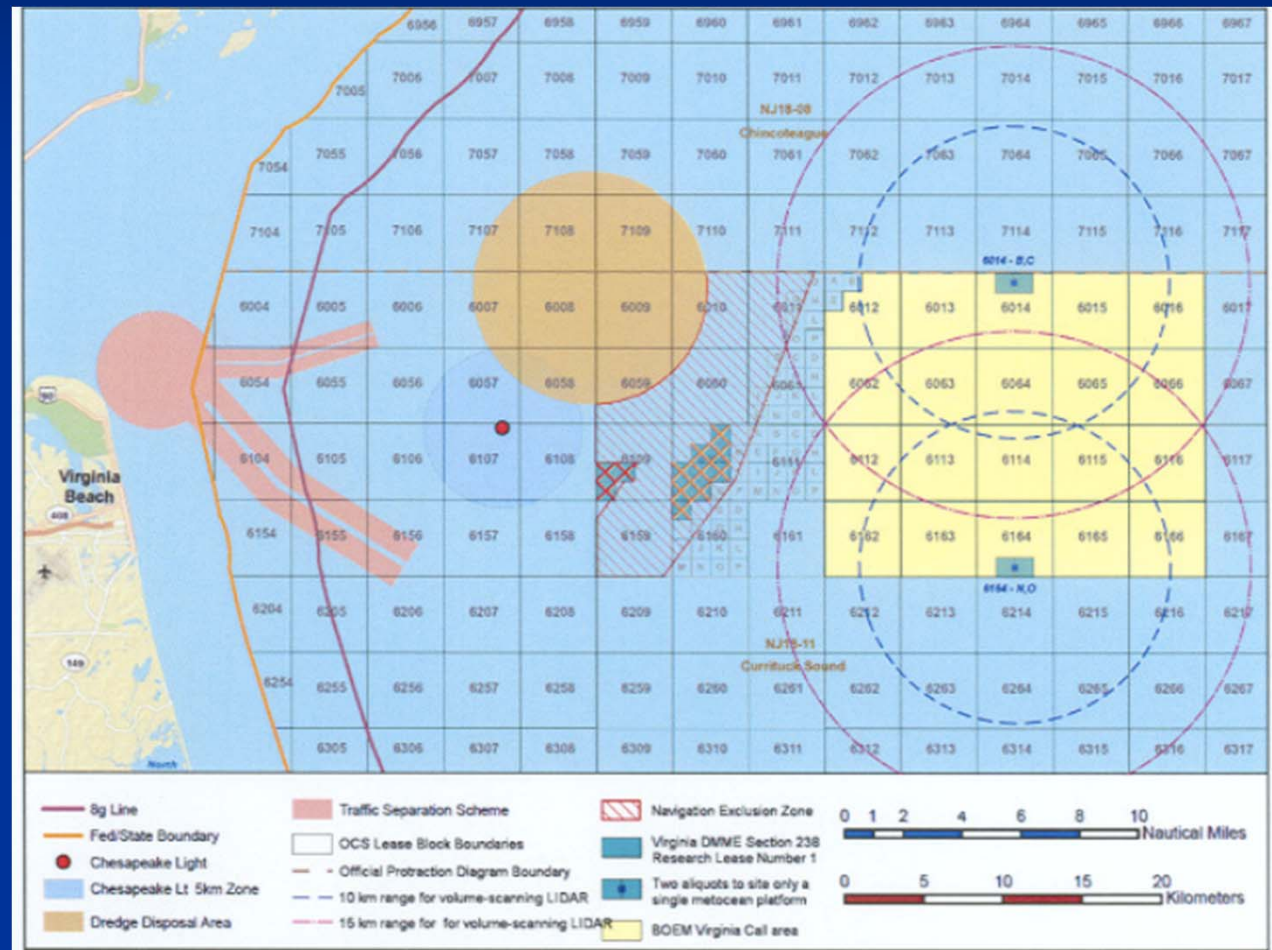


Figure 3.2(b) Example of a Lattice-type Mast Mounted on a Monopile Foundation.

Source: Fishermen's Energy of New Jersey, LLC.

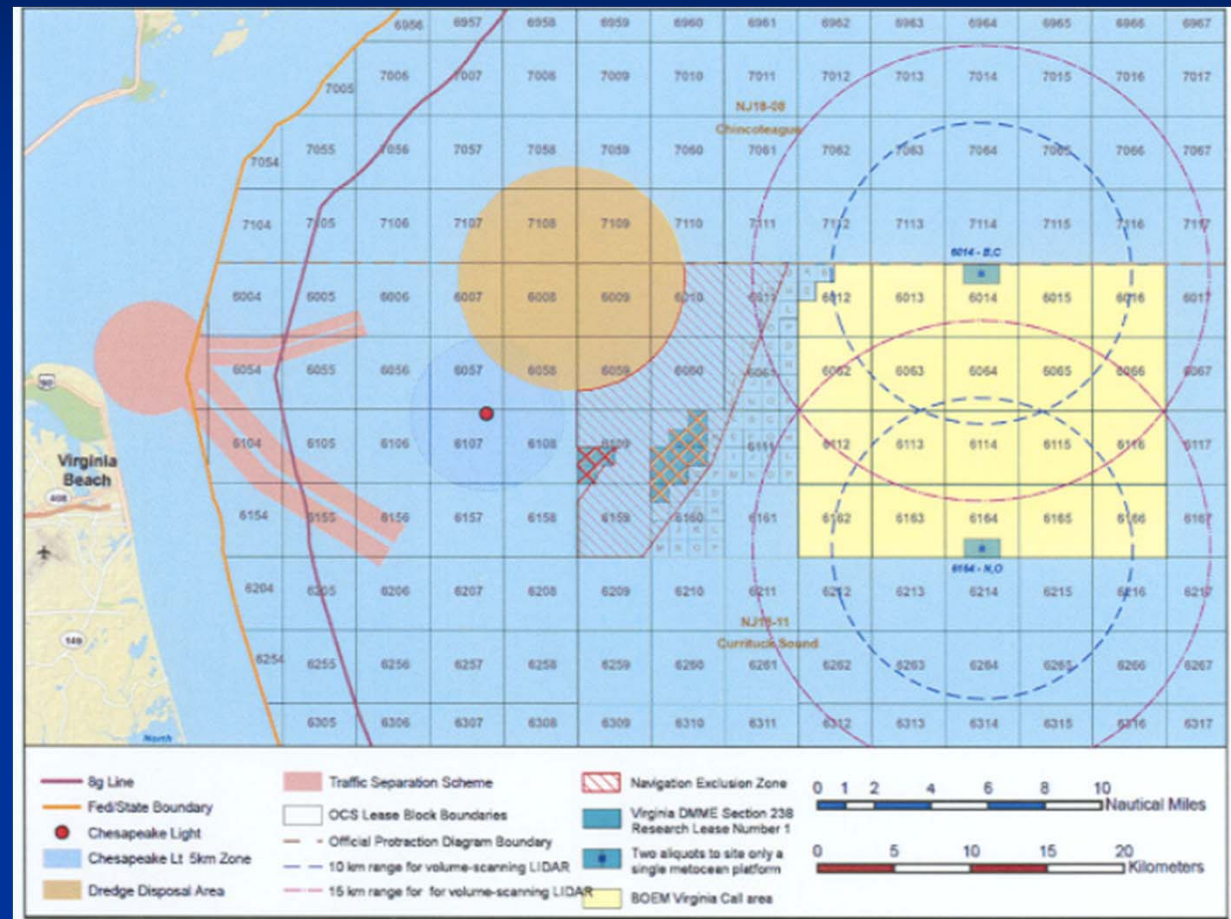
IMPACTS ON COMPETITIVE LEASING IN THE VIRGINIA WIND ENERGY AREA

- All developers responding to the Virginia Call for Information and Nominations confirmed that the met towers would be compatible with the applicants' proposed commercial activities
- BOEM will process DMME application concurrently



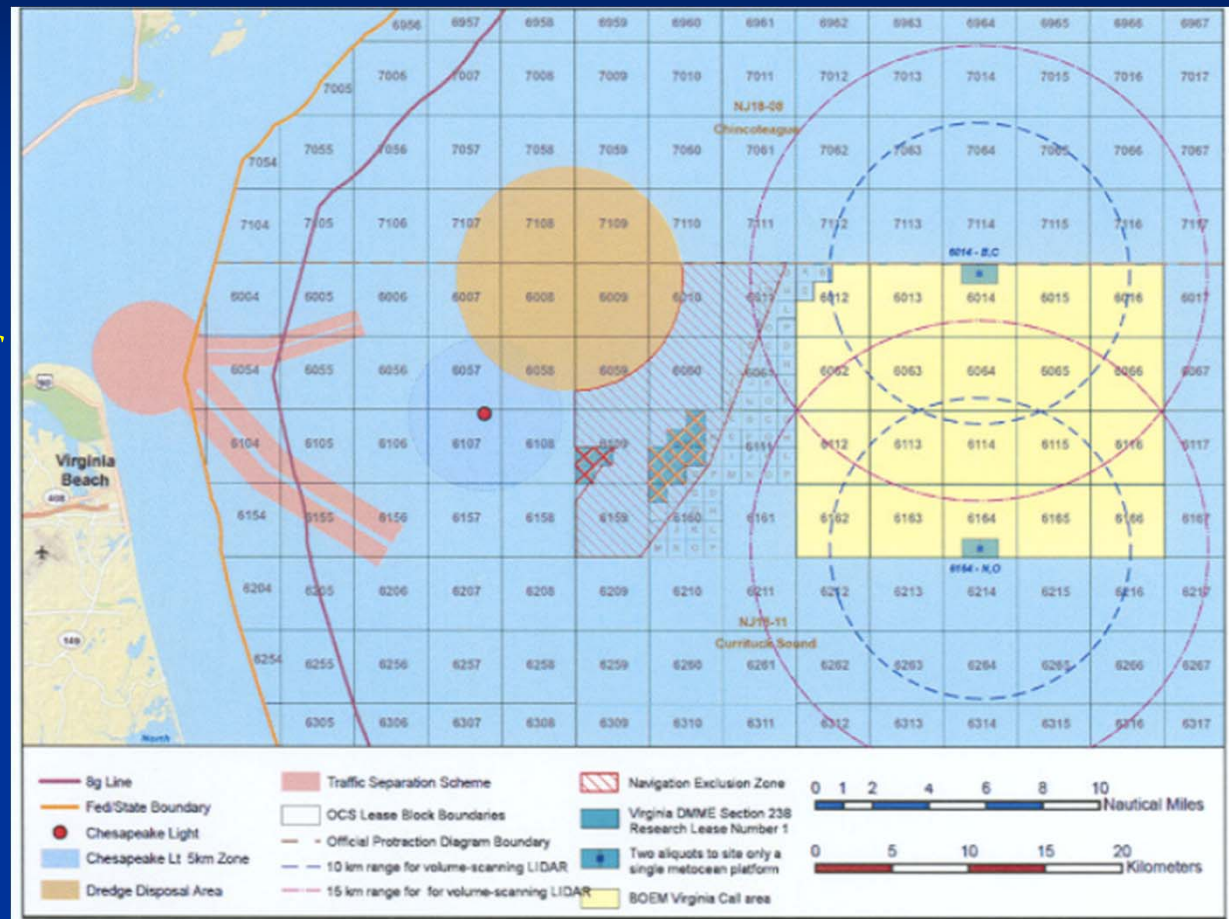
NEXT STEPS

- Application will undergo a completeness review
- If the application is deemed complete a *Request for Competitive Interest* for a research lease will be published in the Federal Register



NEXT STEPS

- If a *Determination of No Competitive Interest* is made an environmental review will be completed to determine if the proposal is within the ranges analyzed in the *Final Environmental Assessment OCS EIS/EA BOEM 2012-003 January 2012*



Questions??

Photo ©Cape Wind



Casey Reeves

Renewable Energy Program Specialist

Office of Renewable Energy Programs

casey.reeves@boem.gov

