



United States Department of the Interior

BUREAU OF OCEAN ENERGY MANAGEMENT, REGULATION, AND ENFORCEMENT

Alaska Outer Continental Shelf Region
3801 Centerpoint Drive, Suite 500
Anchorage, Alaska 99503-5823

DATA ANNOUNCEMENT Minerals Management Service

Outer Continental Shelf Permits 77-03

MULTI-CHANNEL SEISMIC REFLECTION DATA BEAUFORT SEA - ALASKA

From August 2, 1977 until September 11, 1977, Geophysical Corporation of Alaska (GCA) acquired 2,802 miles of multi-channel seismic reflection data in the Beaufort Sea, Alaska. These data were collected under Outer Continental Shelf (OCS) Permit 77-03 issued on February 14, 1977, by the Minerals Management Service (MMS). The MMS acquired all the data under Contract 14-12-0004-60001. Under the conditions of the permit and subsequent regulations, the portion of these data that lie on the OCS beyond the 3-mile limit from shore are now available to the public. The Bureau of Ocean Energy Management, Regulation and Enforcement (BOEMRE) is making the data available to the U. S. Geological Survey for posting on the National Archive of Marine Seismic Surveys web site (<http://walrus.wr.usgs.gov/NAMSS/>).

Under Permit 77-03, seismic data were collected using airguns as the energy source. The three Bolt Model WSK-1799-3C airguns had a net capacity of 1,650 cubic inches and were towed at a depth of 20 feet. Data were recorded at a 4 ms. sample rate with a record length of 5 seconds. The navigation system used for this survey was Loran C. The M/V Bering Explorer was the vessel used for the survey. The data were processed in an 18-fold stack and the final displays were generated with automatic gain control applied.

Approximately 2,500 miles of high resolution seismic reflection data were also collected using an 8 kj minisparker acoustic source.

A small scale map that displays the data coverage is included with this announcement. The specific data being released are as follows.

DATA AVAILABLE

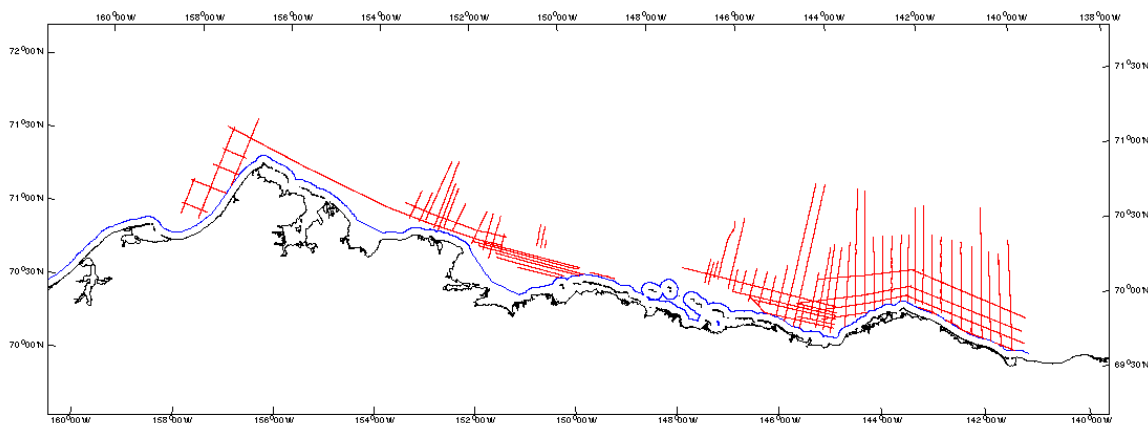
The following data have been processed for release:



2,802 miles of stacked multi-channel seismic reflection profiles displayed at 2 ½ inches per second with automatic gain control applied and provided as scanned images. Images were scanned at 800 dpi and are saved in uncompressed TIFF format. (Stack processing only—no migration)

A digital navigation map as well as the digital navigation data in a text file.

Data Coverage Permit 77-03



These data will also be available upon request from the National Geophysical Data Center (NGDC), Boulder, Colorado (<http://www.ngdc.noaa.gov/mgg/geodas/geodas.html>) or contact Robin Warnken (Robin.R.Warnken@noaa.gov).

For further information or expressions of interest in acquiring the data please contact:

Susan Banet
Bureau of Ocean Energy Management, Regulation, and Enforcement
3801 Centerpoint Drive, Suite 500
Anchorage, Alaska 99503
Fax: (907) 334-5322
Phone: (907) 334-5323
Email: AKMMSRE@boemre.gov

Additional data release announcements may be found at <http://alaska.boemre.gov/re/relgg/INDEX.HTM>