

BOEM has made available the following maps and tables from the NOAA Socioeconomic Report to facilitate productive discussions with fishermen about:

- Available baseline information from federally permitted fishermen
- Specific subgroups of fishermen (e.g., gear, species, ports)
- Data gaps (e.g., state data; qualitative discussion) and caveats (e.g., port changes due to Superstorm Sandy)

General

Maps

- Revenue fishing intensity Mid Atlantic and Northeast, NY Offshore Planning Area with NY Call Area cutout (map id: ERB-2015-1054)
- NY Call Area with transportation separation scheme and shelf blocks identified (map id: PACB-2015-1035)

Table

- Table NY–1. Commercial ports most exposed to the NY Call Area

Review by Port

Maps

- Revenue fishing intensity all NY landings (map id: ERB-2015-1057)
- Combined revenue fishing intensity for landings at Point Lookout, NY and Freeport, NY (map id: ERB-2015-1052)
- Revenue fishing intensity for landings at Montauck, NY (map id: ERB-2015-1053)
- Revenue fishing intensity for landings at Point Pleasant, NJ (map id: ERB-2015-1060)

Review by Gear Type

Maps

- Revenue fishing intensity for bottom trawl (map id: ERB-2015-1049)
- New York Commercial Fishermen Ocean Use Mapping (2012)

Tables

- Table NY–2. Number of permits, by gear, exposed to development of the NY WEA

Review by Species/FMP

Maps

- Revenue fishing intensity for Mackerel Squid Butterfish FMP (map id: ERB-2015-1050)
- Revenue fishing intensity for Loligo Squid (map id: ERB-2015-1055)

Table

- Table NY-3. Exposed FMPs to NY WEA development, 2007-2012

Other

Maps

- Seafloor classification with fishing spots identified

PREPARED BY

Amy Stillings, Industry Economist, amy.stillings@boem.gov

Josh Wadlington, Geographer, josh.wadlington@boem.gov

Brian Hooker, Fish Biologist, brian.hooker@boem.gov

Data Source: Kirkpatrick, A. J., S. Benjamin, G. DePiper, T. Murphy, S. Steinbeck, and C. Demarest. 2015. "NY WEA" NOAA Northeast Fisheries Science Center. Prepared for BOEM under interagency agreement M12PG00028.

Table NY-1. Commercial ports utilizing the NY Call Area for fishing, 2007-2012

Port Group	Avg. Annual Revenue* from NY Call Area	Avg. Annual Total Revenue	% Revenue from NY Call Area
Freeport, NY	\$77,363	\$783,641	9.9
Point Lookout, NY	\$166,664	\$2,417,162	6.9
New London, CT	\$112,670	\$6,101,710	1.8
Point Pleasant, NJ	\$478,290	\$30,335,241	1.6
Newport News, VA	\$398,210	\$38,319,620	1.0
Long Beach, NJ	\$57,165	\$6,226,706	0.9
Stonington, CT	\$61,099	\$7,607,928	0.8
Cape May, NJ	\$562,111	\$75,665,163	0.7
Barnegat, NJ	\$97,142	\$16,706,499	0.6
New Bedford, MA	\$1,264,815	\$292,229,242	0.4

* Based on federally reported vessel trip report landings

Data Source: Kirkpatrick, A. J., S. Benjamin, G. DePiper, T. Murphy, S. Steinbeck, and C. Demarest. 2015. "NY WEA" NOAA Northeast Fisheries Science Center. Prepared for BOEM under interagency agreement M12PG00028.

Table NY-2. Number of permits, by gear, fishing in NY Call Area, 2007-2012

Gear	Permits	Average Annual Revenue	Average Annual from NY Call Area	Percent Revenue from NY Call Area	Top 4 FMPs	Top 5 Port Groups
Dredge	373	\$486,160,813	\$2,914,060	0.6	Sea scallop ¹ ; Surf Clam Ocean Quahog ² ; Monkfish ³ ; Unmanaged ⁴	New Bedford, MA; Cape May, NJ; Newport News, VA; Point Pleasant, NJ; New London, CT
Gillnet	55	\$34,164,385	\$13,254	0.04	Monkfish ³ ; Skate ¹ ; Unmanaged ⁴ ; Bluefish ²	Barneget, NJ; Long Beach, NJ; Point Pleasant, NJ; Belford, NJ; Portsmouth, NH
Hand	31	\$8,339,830	\$178	~0	Summer Flounder, Scup, Black Seabass ² ; Unmanaged ⁴ ; Bluefish ² ; Small Mesh Multispecies ¹	Freeport, NY; Suffolk County, NY; Brooklyn, NY; Point Lookout, NY; Island Park, NY
Lobster Pot	33	\$213,321,675	\$4,724	~0	Unmanaged ⁴ ; Summer Flounder, Scup, Black Seabass ² ; Small Mesh Multispecies ¹ ; Large Mesh Multispecies ¹	Point Pleasant, NJ; Freeport, NY; Belmar, NJ; Neptune, NJ; Belford, NJ
Pot	13	\$11,071,430	\$146	~0	Unmanaged ⁴ ; Summer Flounder, Scup, Black Seabass ² ; Small Mesh Multispecies ¹ ; Large Mesh Multispecies ¹	Islip, NY; Freeport, NY; Neptune, NJ; Brooklyn, NY; Other NY, NY
Longline	1	\$7,399,976	\$106	~0	Golden Tilefish	Long Beach, NJ

Gear	Permits	Average Annual Revenue	Average Annual from NY Call Area	Percent Revenue from NY Call Area	Top 4 FMPs	Top 5 Port Groups
Seine	5	\$10,258,052	\$478	~0	Unmanaged ⁴ ; Monkfish ³ ; Small Mesh Multispecies ¹ ; Summer Flounder, Scup, Black Seabass ²	Gloucester, MA; Fall River, MA; Belford, NJ
Bottom Trawl	212	\$174,094,198	\$569,332	0.3	Sea scallop ¹ ; Squid, Mackerel, Butterfish ² ; Summer Flounder, Scup, Black Seabass ² ; Monkfish ³	Point Lookout, NY; Point Pleasant, NJ; Freeport, NY; Belford, NJ; Narragansett, RI
Midwater Trawl	18	\$21,384,152	\$89,500	0.4	Squid, Mackerel, Butterfish ² ; Atlantic Herring ¹ ; Unmanaged ⁴ ; Spiny Dogfish ³	Gloucester, MA; New Bedford, MA; Cape May, NJ; Fall River, MA; North Kingstown, RI

¹NEFMC management; ²MAFMC management; ³Joint NEFMC and MAFMC management; ⁴Unmanaged species

* Based on federally reported vessel trip report landings

Data Source: Kirkpatrick, A. J., S. Benjamin, G. DePiper, T. Murphy, S. Steinbeck, and C. Demarest. 2015. "NY WEA" NOAA Northeast Fisheries Science Center. Prepared for BOEM under interagency agreement M12PG00028.

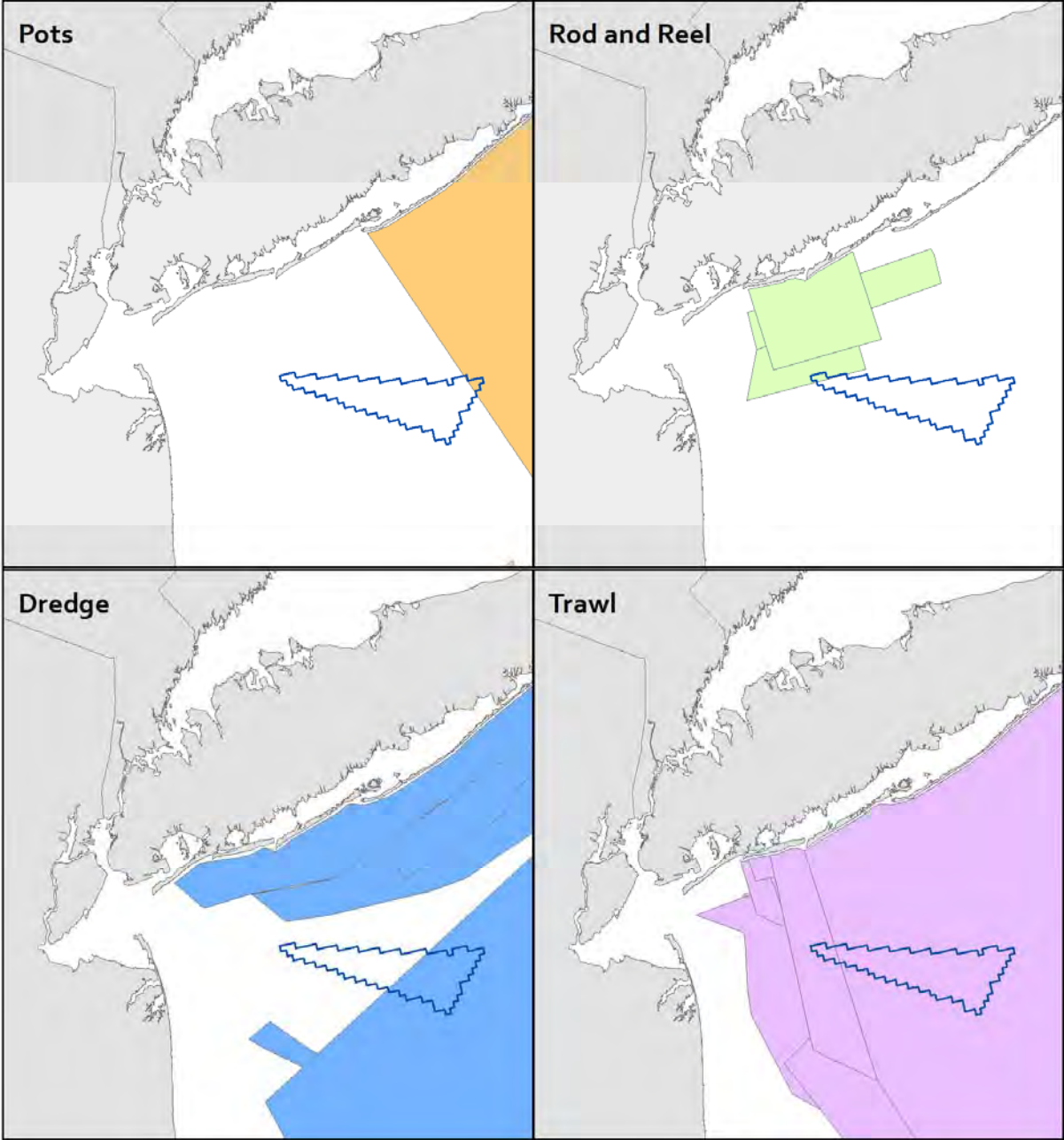
Table NY-3. Revenue by FMPs fished from NY Call Area, 2007-2012

FMP	Jurisdiction	Average Annual Revenue from NY Call Area*	Average Annual Total Revenue	% Revenue from NY Call Area
Sea Scallop	NEFMC	\$3,262,785	\$428,413,267	0.8
Squid, Mackerel, Butterfish	MAFMC	\$194,935	\$40,849,295	0.5
Monkfish	NEFMC, MAFMC	\$28,340	\$19,759,447	0.1
Atlantic Herring	NEFMC	\$28,086	\$23,241,713	0.1
Summer Flounder, Scup, Black Seabass	MAFMC	\$39,452	\$33,166,172	0.1
Surf Clam & Ocean Quahog	MAFMC	\$22,385	\$64,967,095	~0
Skate	NEFMC	\$1,395	\$7,796,915	~0
Small Mesh Multispecies	NEFMC	\$1,572	\$10,675,728	~0
Unmanaged		\$10,959	\$248,316,185	~0
Large Mesh Multispecies	NEFMC	\$960	\$76,625,579	~0

* Based on federally reported vessel trip report landings

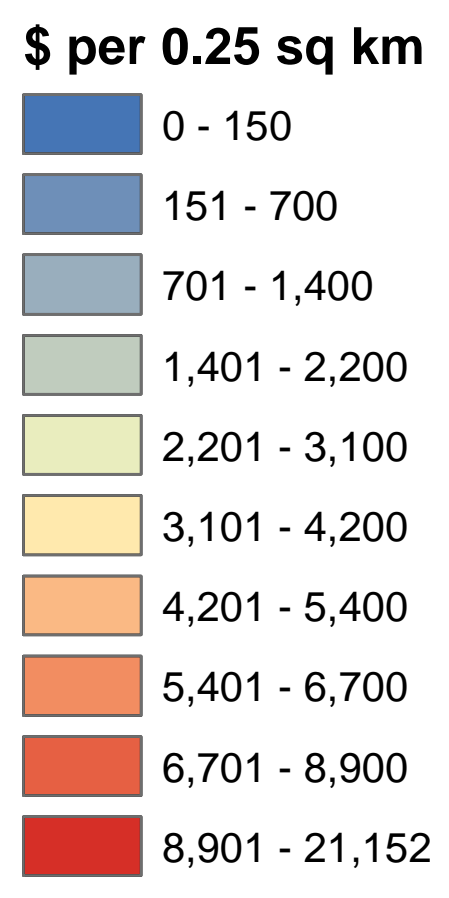
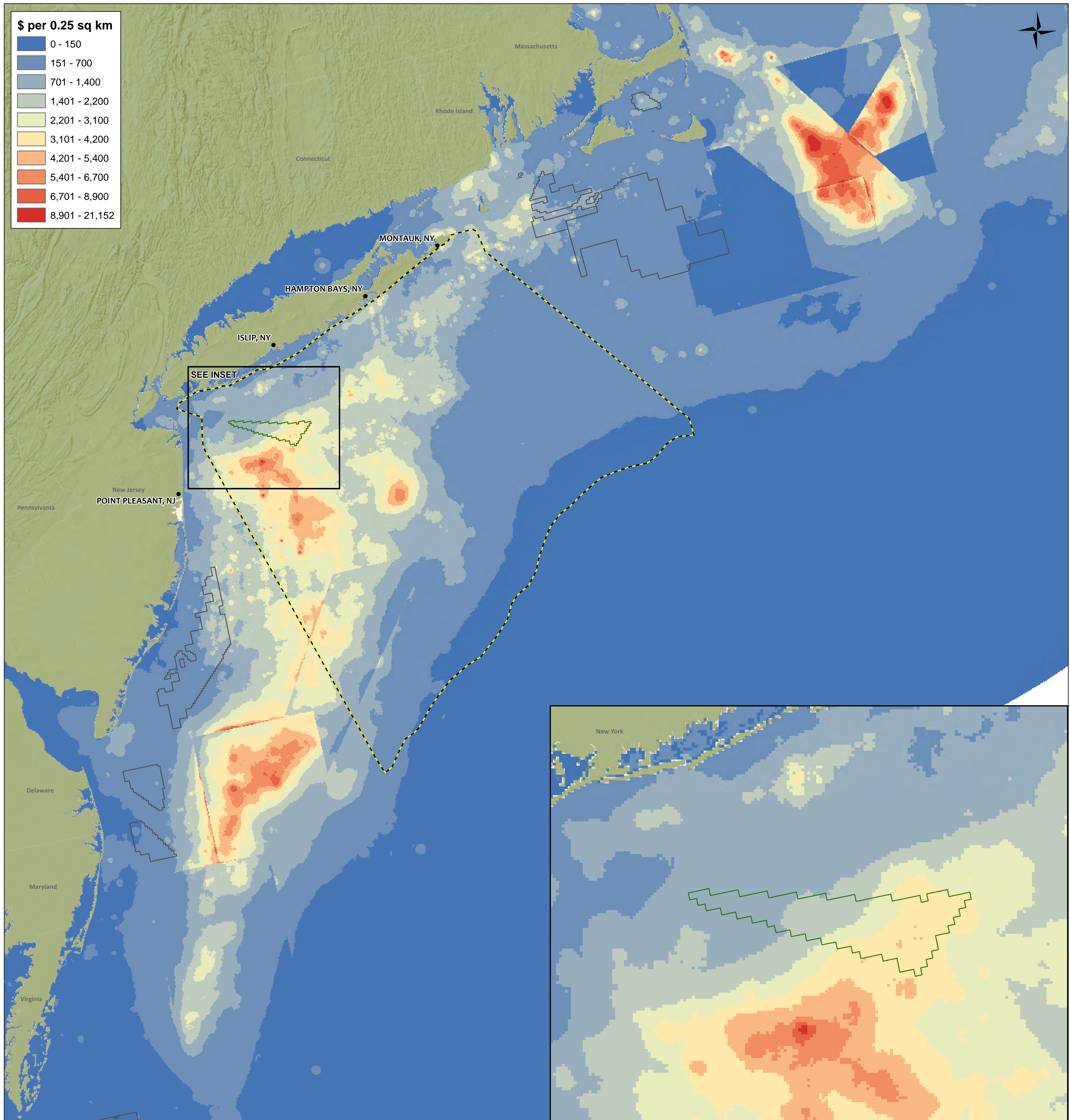
Data Source: Kirkpatrick, A. J., S. Benjamin, G. DePiper, T. Murphy, S. Steinbeck, and C. Demarest. 2015. "NY WEA" NOAA Northeast Fisheries Science Center. Prepared for BOEM under interagency agreement M12PG00028.

New York Commercial & For-Hire Fishermen Ocean Use Mapping
Cornell Cooperative Extension & NYS Dept of State
Commercial Fishing Areas, by Gear



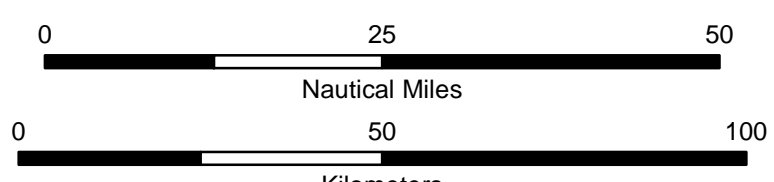
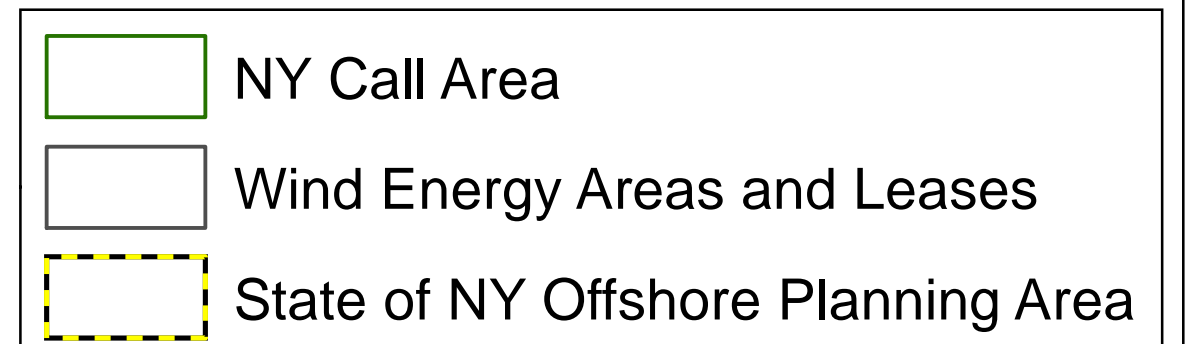
Qualitative pGIS data products from NYS-DOS/CCE's "New York Fisherman Ocean Use Mapping" Project
Projection: Albers Equal Area Conic Datum: NAD83

Source: Scotti, John, Jacqueline Stent, and Kristin Gerbino. 2012. New York Commercial Fishermen Ocean Use Mapping - Final Report. Cornell Cooperative Extension Marine Program (for New York Department of State).



U.S. Department of the Interior
 Bureau of Ocean Energy Management
 Office of Renewable Energy Programs

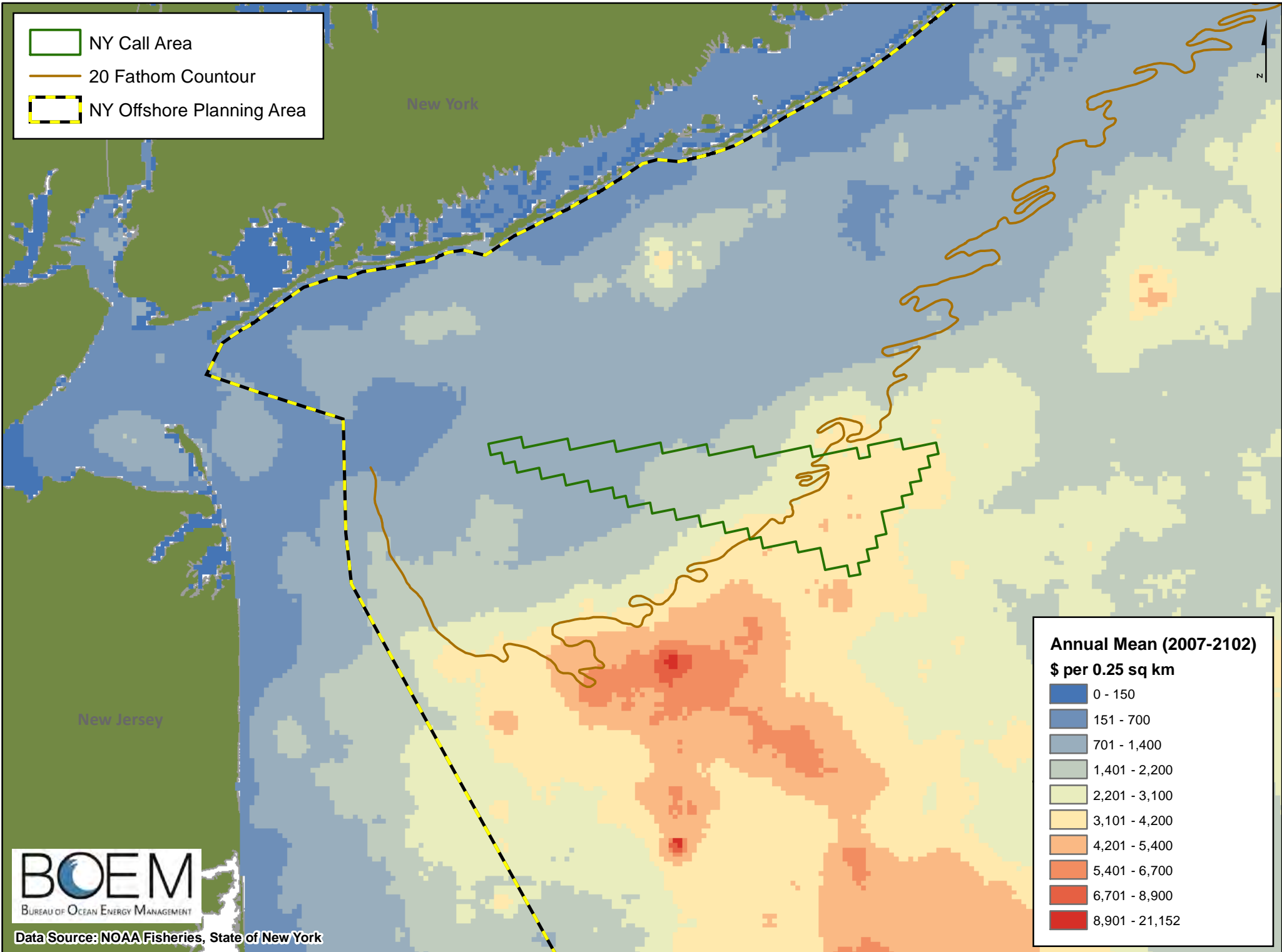
**Federally Managed Commercial Fishing Revenue -
 All Ports: 2007-2012 Average Annual Landings Value**



Coordinate System: Albers Conic Equal Area
 Projection: Albers
 Datum: North American 1983

Data Source(s): NOAA Fisheries, USGS TNM, BOEM

Commercial Fishing Revenue - Federally Managed Permits: Annual Mean (2007-2012)



74°0'W

73°30'W

73°0'W

NY Call Area

New York

ISLIP, NY

POINT LOOKOUT, NY

40°30'N

New Jersey

POINT PLEASANT, NJ

40.394074
-73.628463

15.8nm

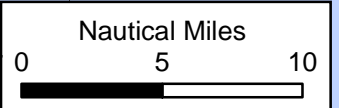
11.5nm

40.34735
-73.360955

40.29978
-73.079726

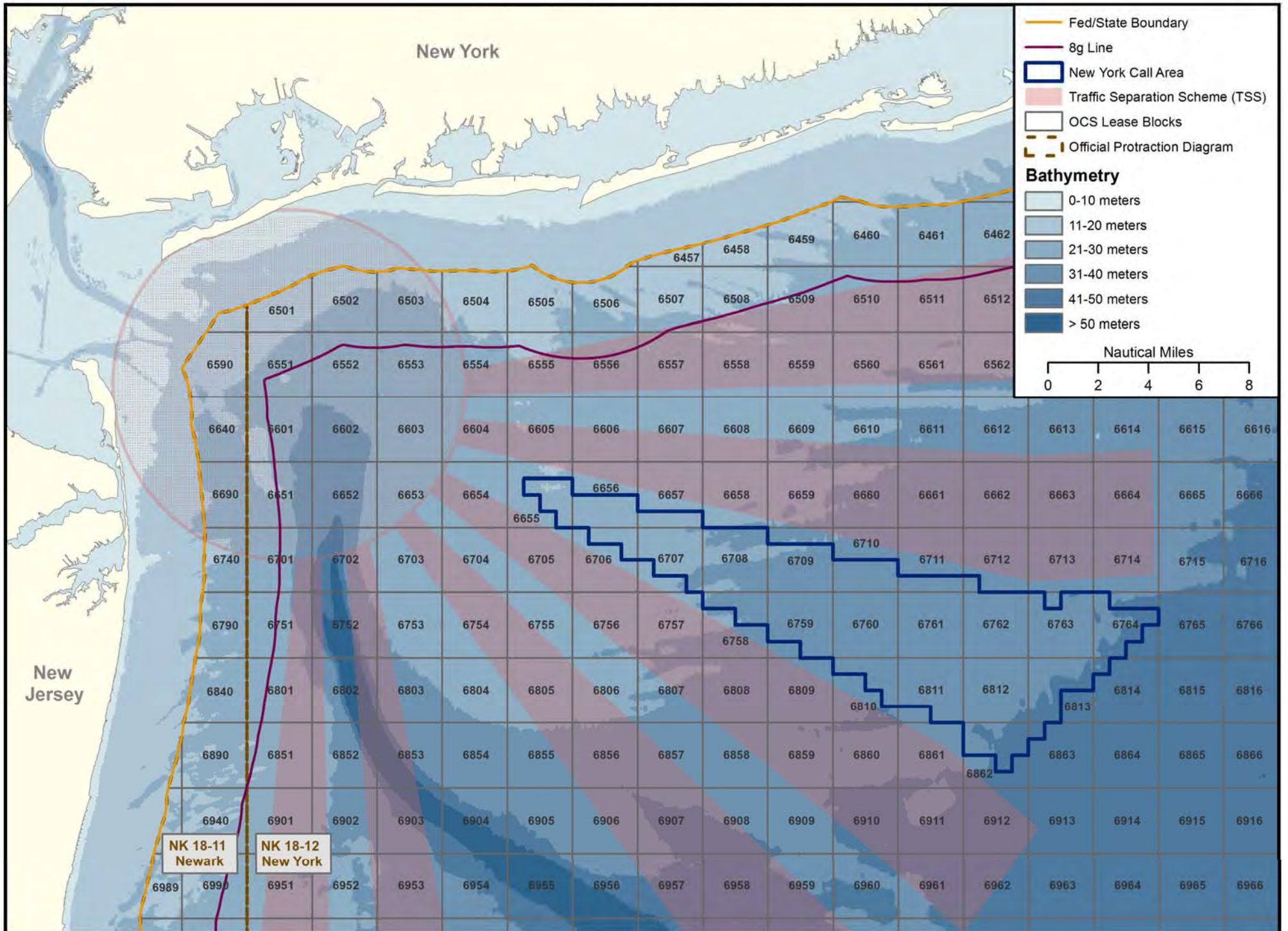
40.283294
-73.418967

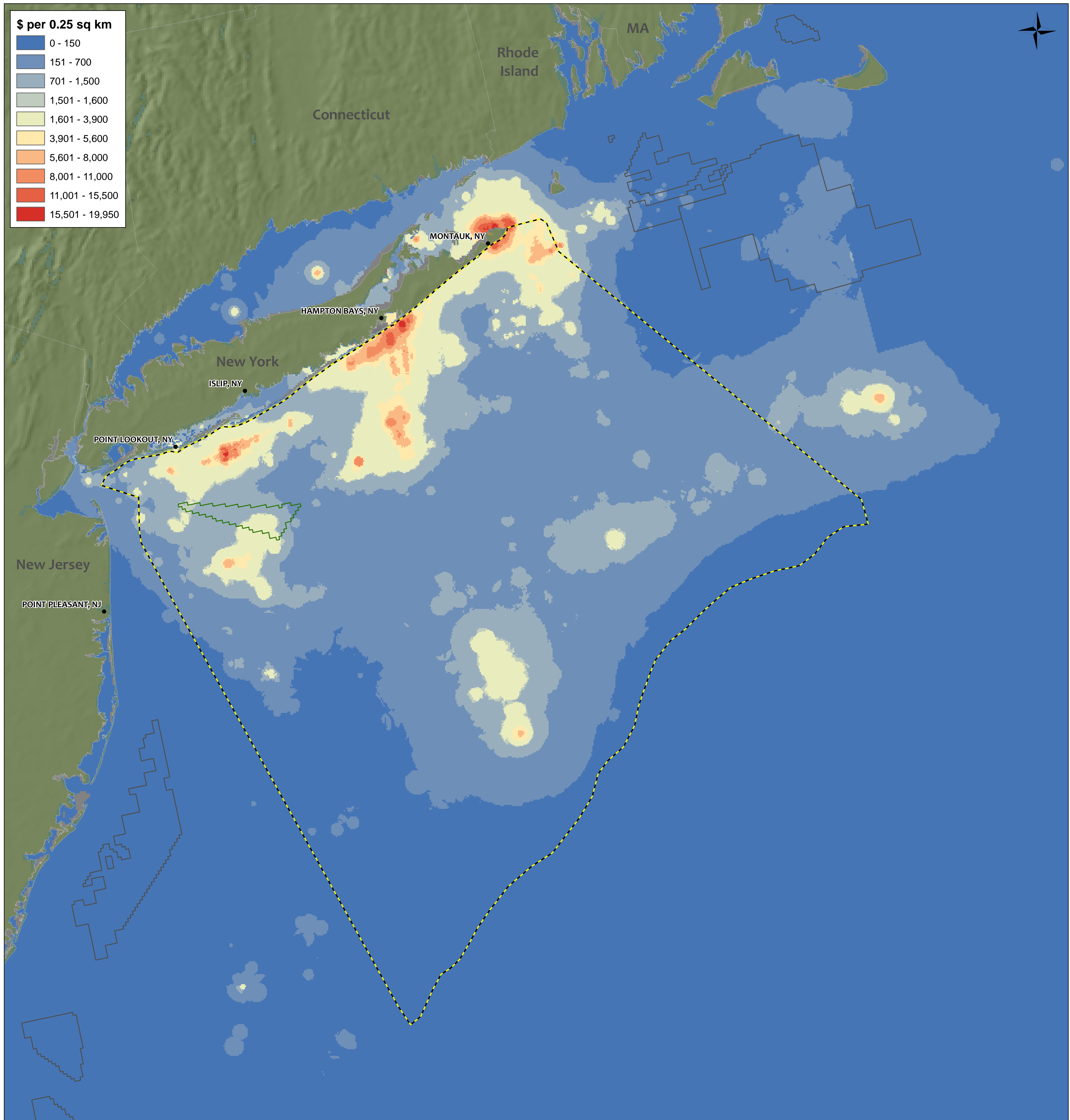
40.19376
-73.209593



Coordinate System: NAD 1983 UTM Zone 18N
 Projection: Transverse Mercator
 Datum: North American 1983




New York Call Area

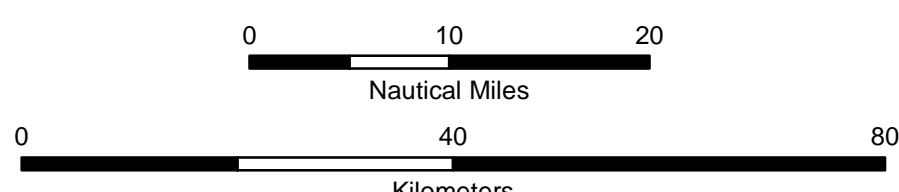




U.S. Department of the Interior
 Bureau of Ocean Energy Management
 Office of Renewable Energy Programs

**Federally Managed Commercial Fishing Revenue -
 All New York Ports: 2007-2012 Total Landings Value**

-  NY Call Area
-  Wind Energy Areas and Leases
-  State of NY Offshore Planning Area



Coordinate System: Albers Conic Equal Area
 Projection: Albers
 Datum: North American 1983

Data Source(s): NOAA Fisheries, USGS TNM, BOEM

73°30'W

73°0'W

72°30'W

72°0'W

71°30'W

NY Call Area

Connecticut

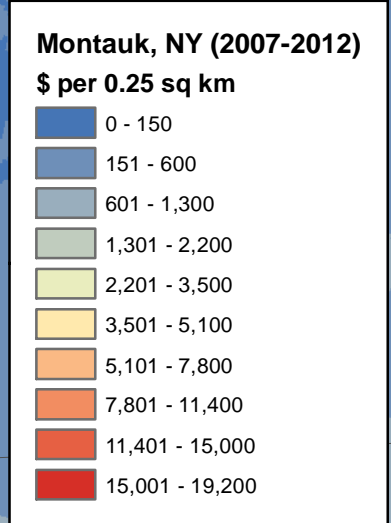
New York



41°0'N

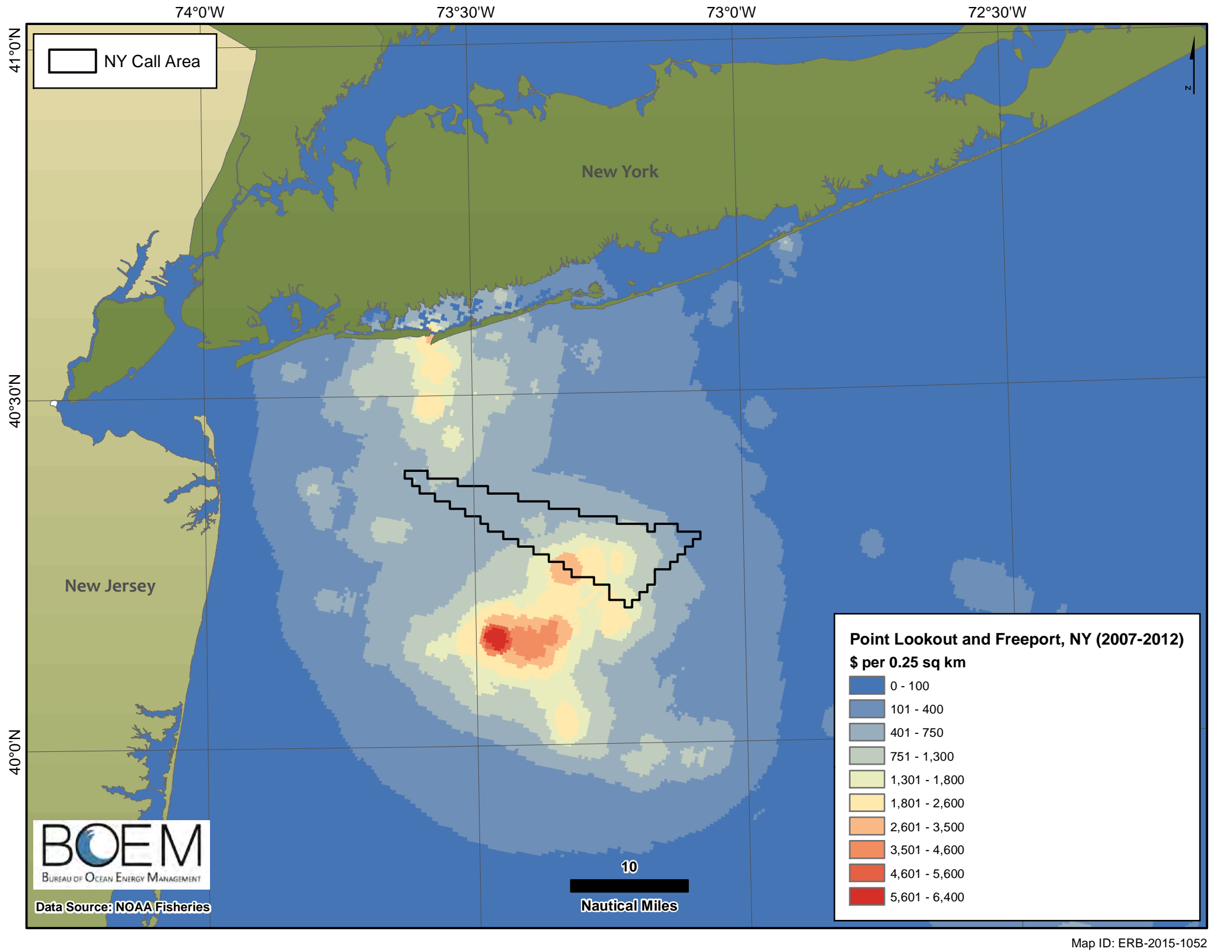
40°30'N

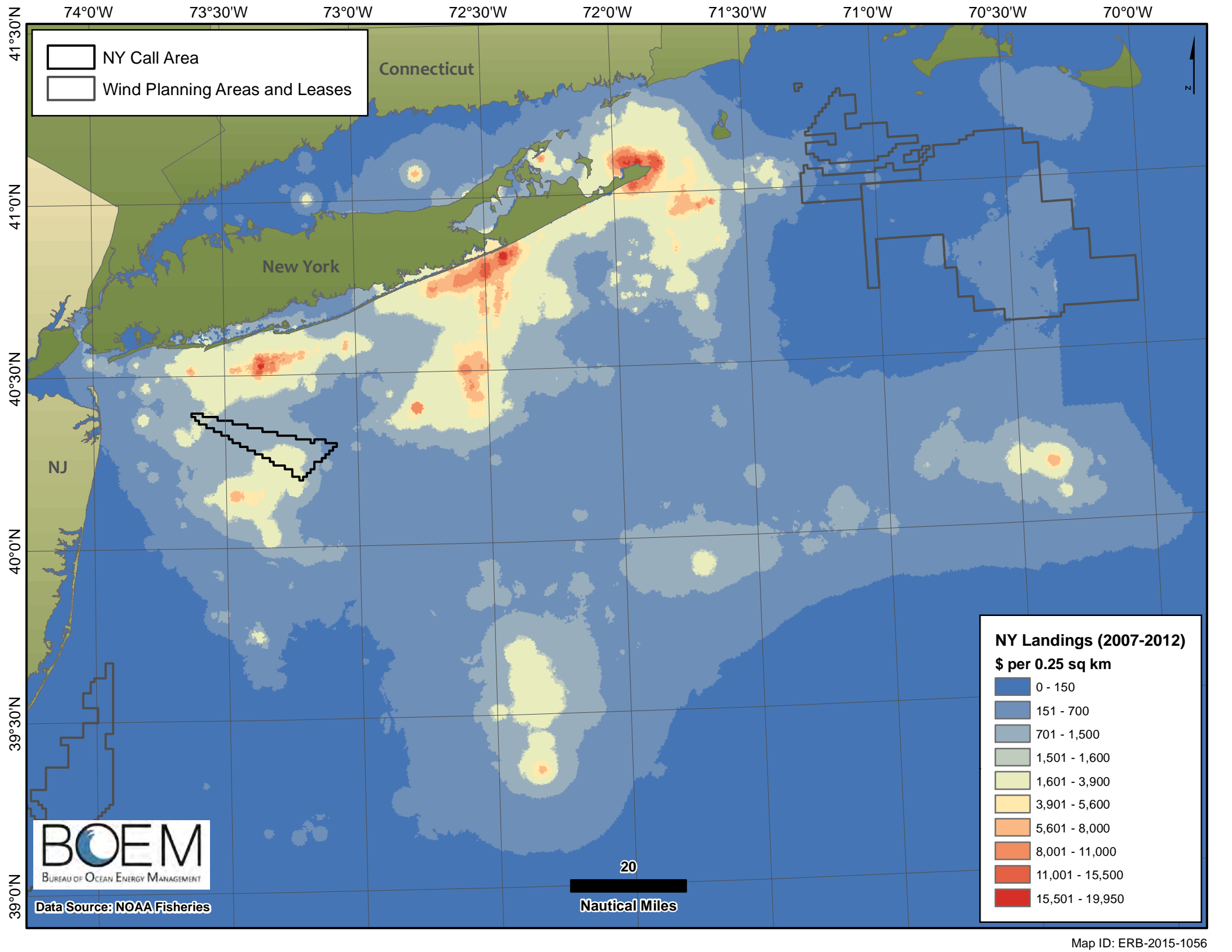
40°0'N

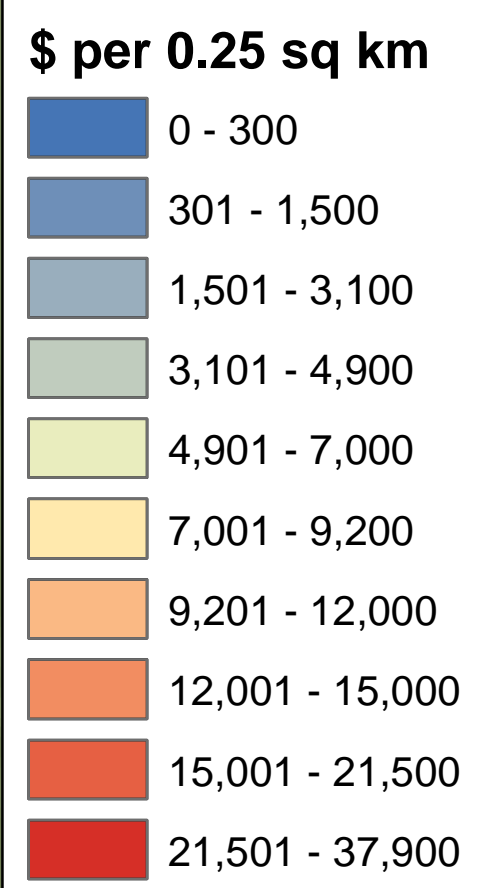
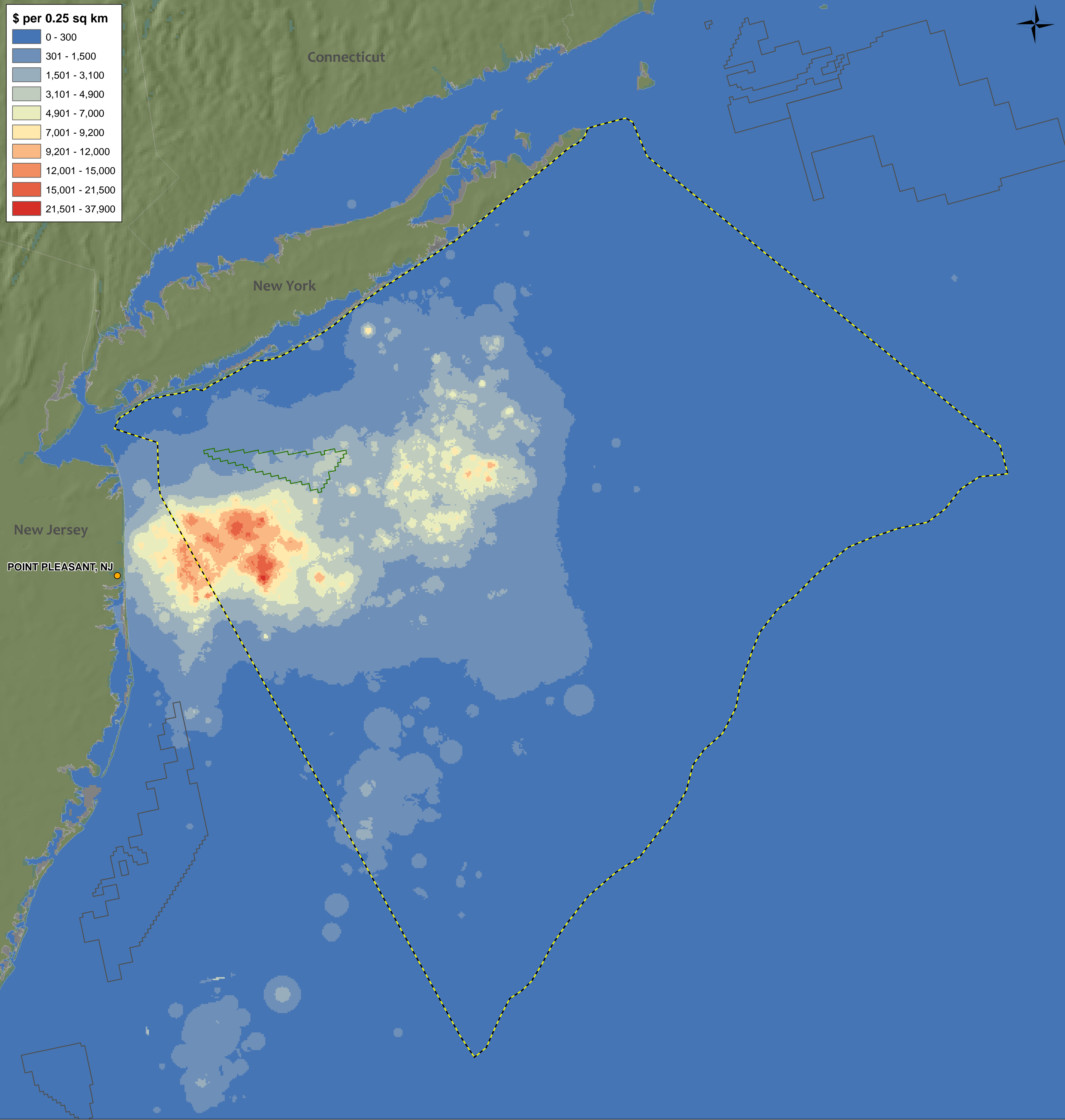


Data Source: NOAA Fisheries





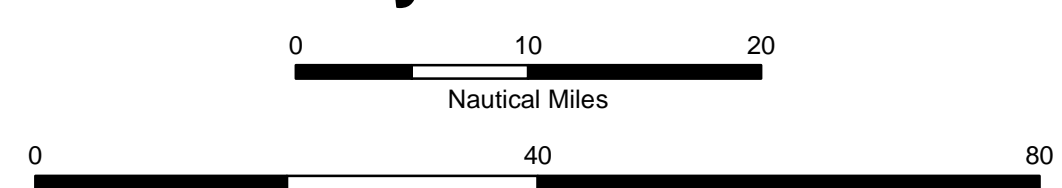




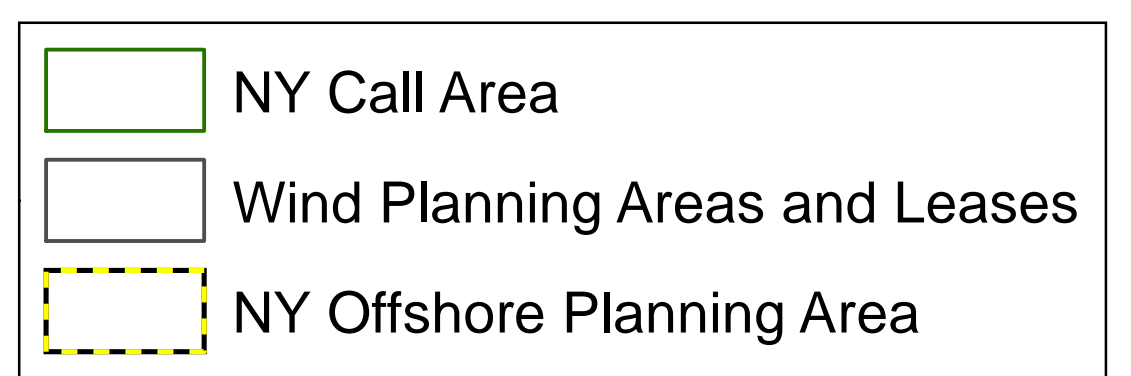
New Jersey
POINT PLEASANT, NJ

U.S. Department of the Interior
Bureau of Ocean Energy Management
Office of Renewable Energy Programs

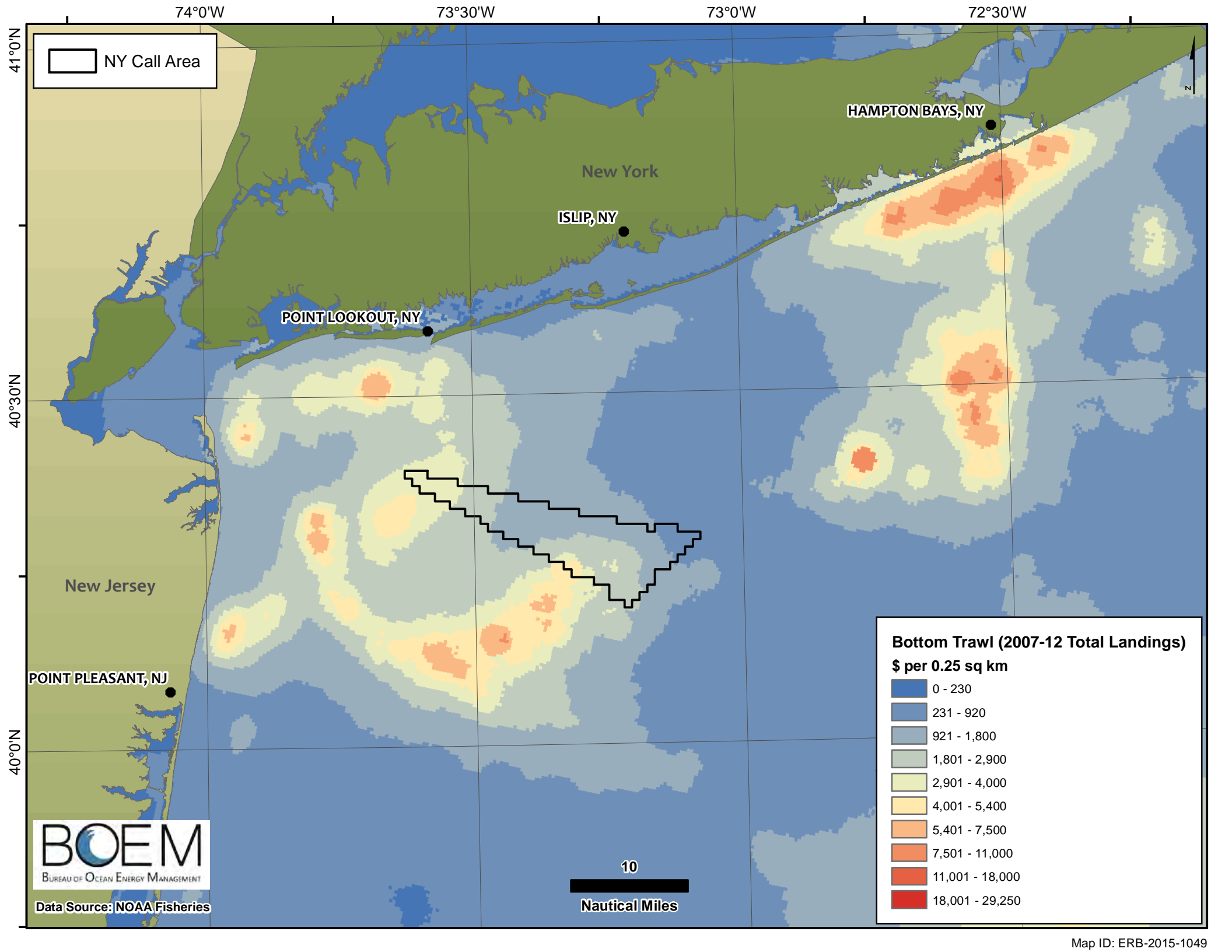
**Federally Managed Commercial Fishing Revenue -
Point Pleasant, New Jersey: 2007-2012 Total Landings Value**



Coordinate System: Albers Conic Equal Area
Projection: Albers
Datum: North American 1983



Data Source(s): NOAA Fisheries, USGS TNM, BOEM



NY Call Area

HAMPTON BAYS, NY

New York

ISLIP, NY

POINT LOOKOUT, NY

New Jersey

POINT PLEASANT, NJ

Bottom Trawl (2007-12 Total Landings)
\$ per 0.25 sq km

0 - 230
231 - 920
921 - 1,800
1,801 - 2,900
2,901 - 4,000
4,001 - 5,400
5,401 - 7,500
7,501 - 11,000
11,001 - 18,000
18,001 - 29,250



Data Source: NOAA Fisheries

10
Nautical Miles

