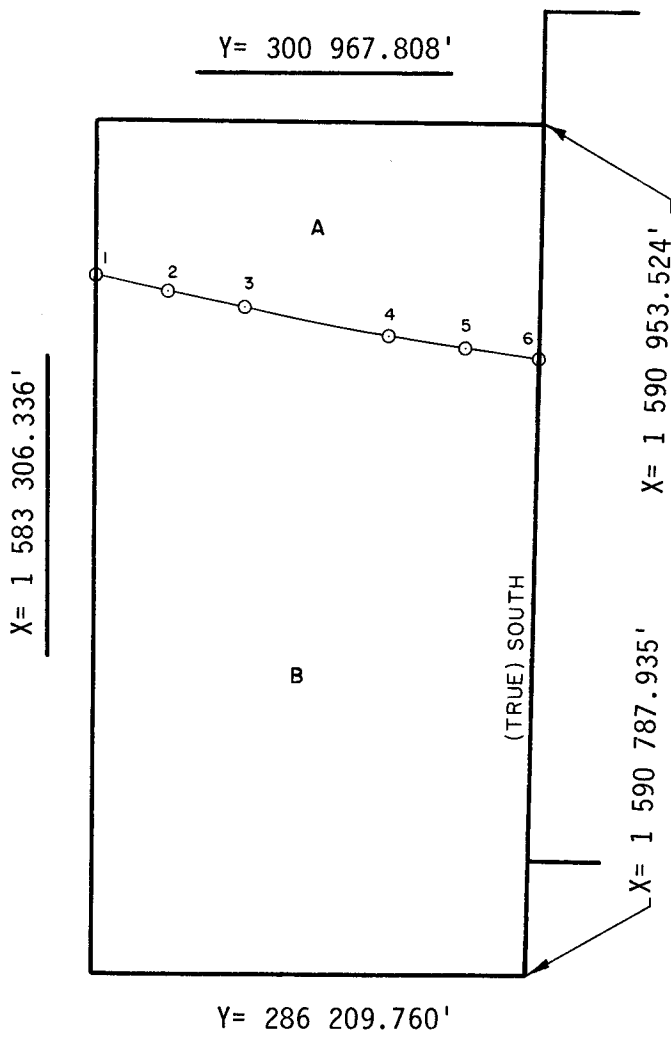


UNITED STATES DEPARTMENT OF INTERIOR  
MINERALS MANAGEMENT SERVICE

SUPPLEMENTAL OFFICIAL  
OCS 8-G BLOCK DIAGRAM

East  
Cameron Area  
OPD NAME  
OPD NO. LA Map 2  
BLOCK NO. 38  
OCS LEASE NO.  
STATE LEASE NO.

SALE NO.  
☐ FED. - STATE SEAWARD BDY.  
RADIUS  
☒ 8-G BOUNDARY  
RADIUS 36 468.91'



INTERSECTIONS

	X	Y
1	1 583 306.336'	298 291.629'
2	1 584 532.86'	298 024.29'
3	1 585 845.00'	297 761.86'
4	1 588 314.55'	297 278.91'
5	1 589 640.73'	297 048.85'
6	1 590 907.357'	296 853.123'

ARC CENTERS

	X	Y
1-2	1 591 685'	333 785'
*2-3	1 591 685'	333 785'
3-4	1 594 075'	333 290'
4-5	1 595 210'	333 090'
*5-6	1 595 210'	333 090'

\*TANGENT SEGMENT

B= FEDERAL AREA 1959.76A STATE AREA 8G AREA 603.04A DISPUTED AREA  
% % % %

COMPUTATIONS BY JFDL DATE 10-2-85

DRAFTED BY JH DATE 10-15-86

CHECKED BY JH DATE 12/22/86

FOR THE DIRECTOR

Telma H. Johnson

DATE 5-16-87

FOR THE STATE

DATE