

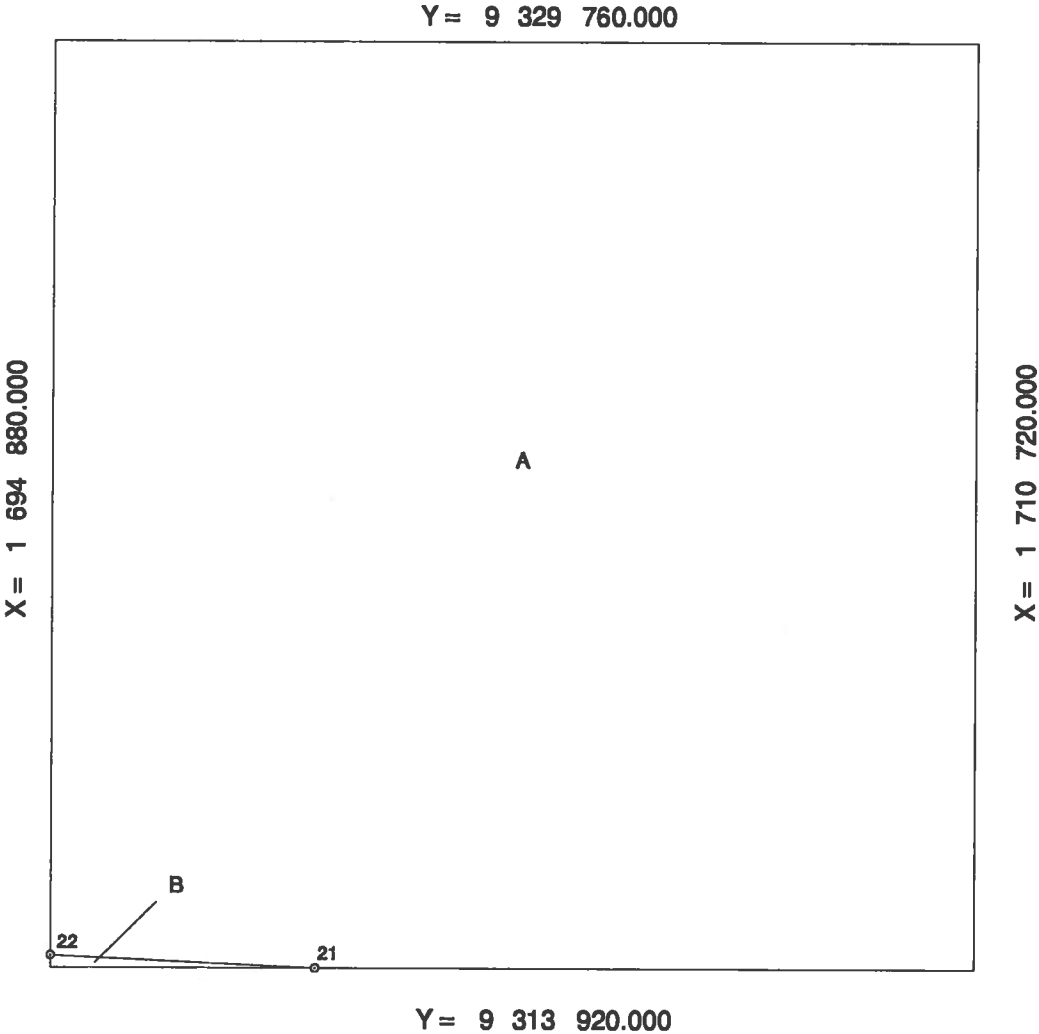
Supplemental Official OCS Block Diagram

OCS Planning Area Name
Leasing Map / OPD Name

Central Gulf of Mexico / NUS
Sigsbee Escarpment

Leasing Map/
OPD Number
Block Number
Datum
Units
Previous SOBD
Signature Date

NG15-08
287
NAD 27
Feet
01-NOV-2000



Fed Area
Beyond
200 NM
Non-United
States
Area
Total Area

A = 5748.950000 ac
B = 11.050000 ac
5760.000000 ac

		Offshore Intersections		Contributing Baseline Points		Tangent Baseline End Points	
		X	Y	X	Y	X	Y
21	1 699 398.220	9 313 920.000					
22	1 694 880.000	9 314 133.010					

Central Gulf of Mexico (A)
Non-US Jurisdiction (B)
U.S.-Mexico Continental Shelf Boundary

Douglas S. Vardag

01-JULY-2013

For the Director, BOEM

Date

For the State

Date