

Supplemental Official OCS Block Diagram

OCS Planning Area Name

Central Gulf of Mexico / NUS

Leasing Map / OPD Name

Sigsbee Escarpment

Leasing Map/
OPD Number

NG15-08

Block Number

286

Datum

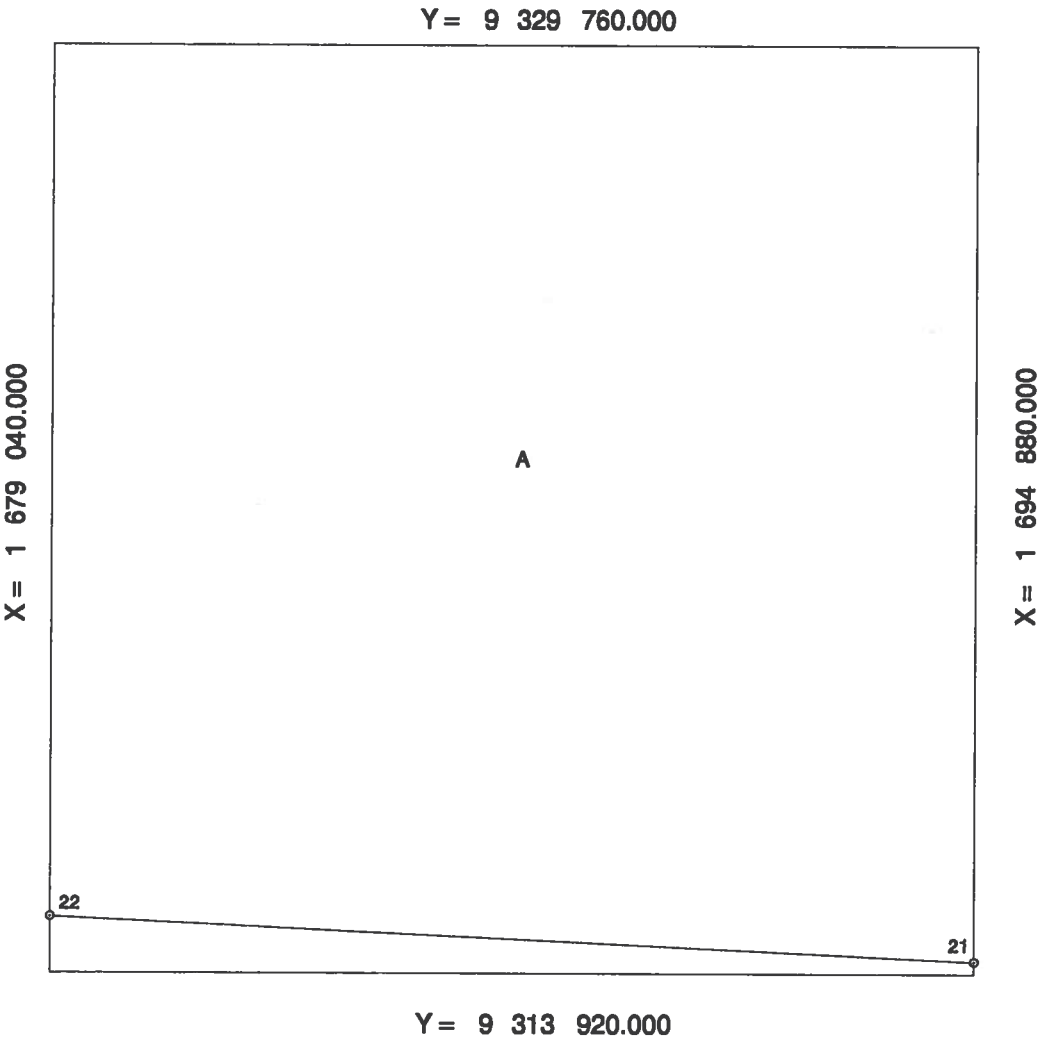
NAD 27

Units

Feet

Previous SOBD
Signature Date

01-NOV-2000



Fed Area
Beyond
200 NM

A = 5546.760000 ac

Non-United
States
Area

B = 213.240000 ac

Total Area

5760.000000 ac

Offshore Intersections		Contributing Baseline Points		Tangent Baseline End Points	
X	Y	X	Y	X	Y
21	1 694 880.000	9 314	133.010		
22	1 679 040.000	9 314	879.780		

Central Gulf of Mexico (A)
Non-US Jurisdiction (B)
U.S.-Mexico Continental Shelf Boundary

Douglas S. Vardag

01-JULY-2013

For the Director, BOEM

Date

For the State

Date