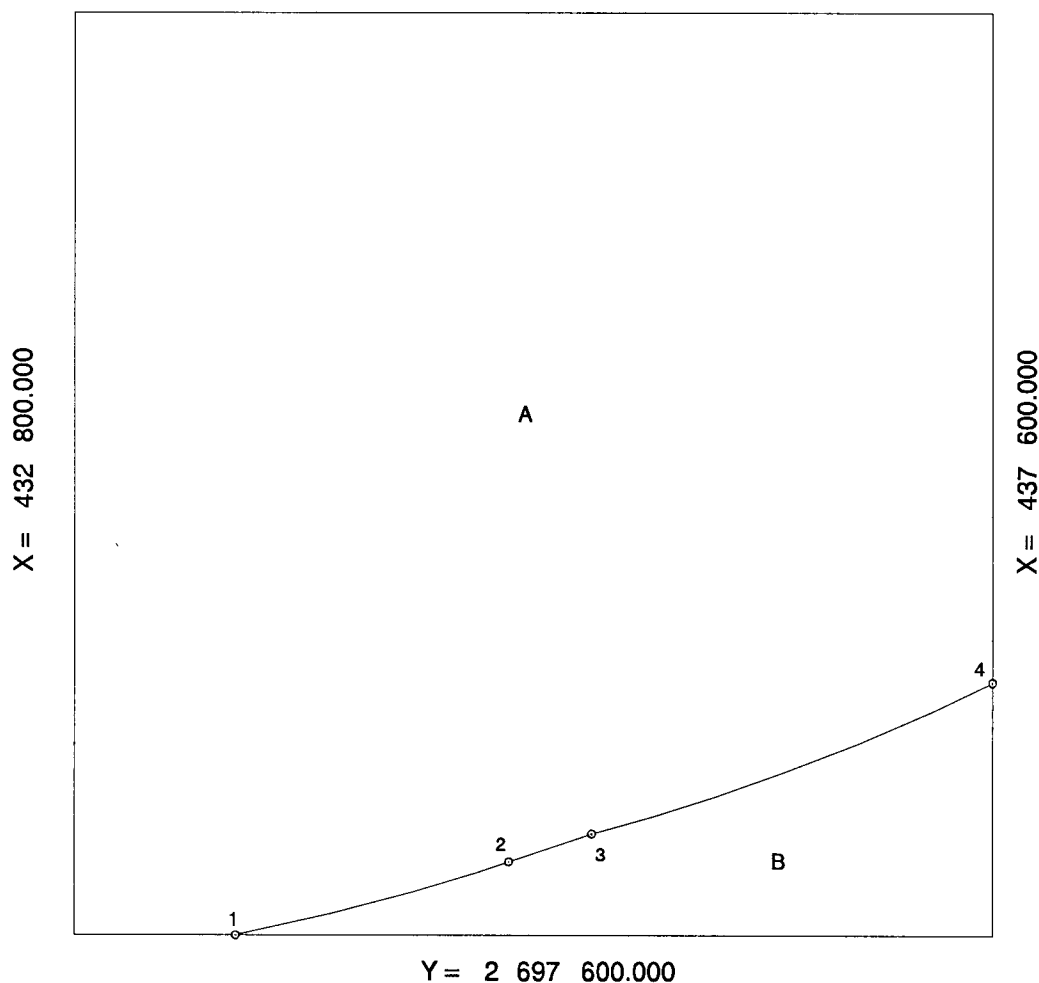


| | |
|-----------------------------|--------------------|
| OCS Planning Area Name | Straits of Florida |
| Leasing Map / OPD Name | Key West |
| Limit of '8(g) Zone' Radius | 11 112.000 |

| | |
|---------------------------------|---------------|
| Leasing Map/ OPD Number | NG17-11 |
| Block Number | 6607 |
| Datum | NAD 83/WGS 84 |
| Units | Meters |
| Previous SOBD Signature Date | 13-MAR-1997 |

$$Y = 2\,702\,400.000$$


Federal
8(g) Area A = 2074.038914 ha

Federal
Non-8(g)
Area B = 229.961086 ha

Total Area 2304.000000 ha

| | Offshore Intersections | | | | | Contributing Baseline Points | | | | Tangent Baseline End Points | |
|---|------------------------|---------|---|-----|---------|------------------------------|-----|---------|---|-----------------------------|---------|
| | X | | Y | | | X | | Y | | X | Y |
| 1 | 433 | 647.125 | 2 | 697 | 600.000 | 1 - 2 | 431 | 482.063 | 2 | 708 | 499.039 |
| 2 | 435 | 073.192 | 2 | 697 | 983.321 | 2 - 3 | 431 | 738.432 | 2 | 708 | 583.128 |
| 3 | 435 | 505.857 | 2 | 698 | 129.275 | 3 - 4 | 432 | 639.868 | 2 | 708 | 865.319 |
| 4 | 437 | 600.000 | 2 | 698 | 921.797 | | | | | | |

For the Director, MMS 01/24/2006
Date

For the State

Date _____