

UNITED STATES DEPARTMENT OF INTERIOR  
~~BUREAU OF LAND MANAGEMENT~~  
MINERALS MANAGEMENT SERVICE

SUPPLEMENTAL OFFICIAL  
OCS 8-G BLOCK DIAGRAM

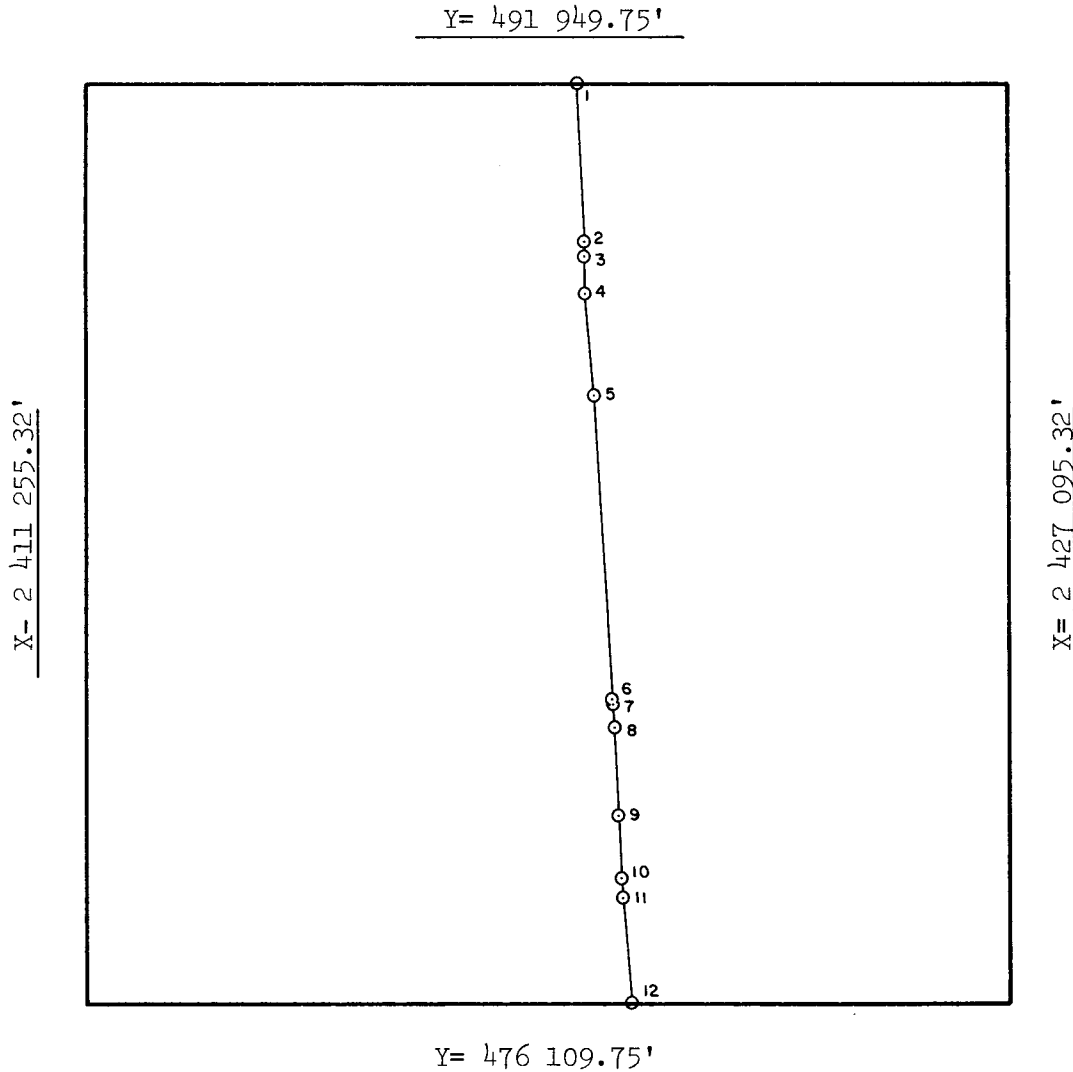
NORTH PADRE ISLAND AREA

DISC PAK NO.

OPD NO. TEX MAP 2  
BLOCK NO. 939  
OCS LEASE NO. \_\_\_\_\_  
STATE LEASE NO. \_\_\_\_\_

FILE NO.

Sale No. 74  
Western Gulf of Mexico  
Radius 54 684.93'



INTERSECTIONS

	X	Y
1	2 419 685.41'	491 949.75'
2	2 419 817.35'	489 279.39'
3	2 419 815.10'	489 050.63'
4	2 419 807.60'	488 421.10'
5	2 419 964.79'	486 628.35'
6	2 420 301.80'	481 286.65'
7	2 420 303.78'	481 206.59'
8	2 420 325.69'	480 908.06'
9	2 420 421.76'	479 385.27'
10	2 420 464.56'	478 299.76'
11	2 420 474.60'	477 959.40'
12	2 420 610.42'	476 109.75'

ARC CENTERS

	X	Y
*1-2	2 364 914.00'	492 350.00'
2-3	2 365 134.05'	489 702.03'
*3-4	2 365 134.05'	489 702.03'
*4-5	2 365 094.16'	486 353.53'
*5-6	2 365 289.00'	484 760.00'
6-7	2 365 634.65'	479 892.28'
*7-8	2 365 646.89'	478 821.11'
*8-9	2 365 289.00'	484 760.00'
9-10	2 365 803.39'	476 688.02'
*10-11	2 365 803.39'	476 688.02'
*11-12	2 365 848.75'	475 149.66'

\* TANGENT SEGMENT

FEDERAL AREA \_\_\_\_\_

STATE AREA 3226.18 ac

8G AREA 2533.82 ac

% \_\_\_\_\_

% \_\_\_\_\_

% \_\_\_\_\_

COMPUTATIONS BY MEU DATE 2-25-83

DRAFTED BY QV DATE 3-2-83

CHECKED BY AJD DATE 3/13/83

FOR THE DIRECTOR

Teland & Hornable  
DATE 7/18/83

FOR THE STATE

Jack Gibson  
DATE JUN 5 1983