

DISC PAK NO.

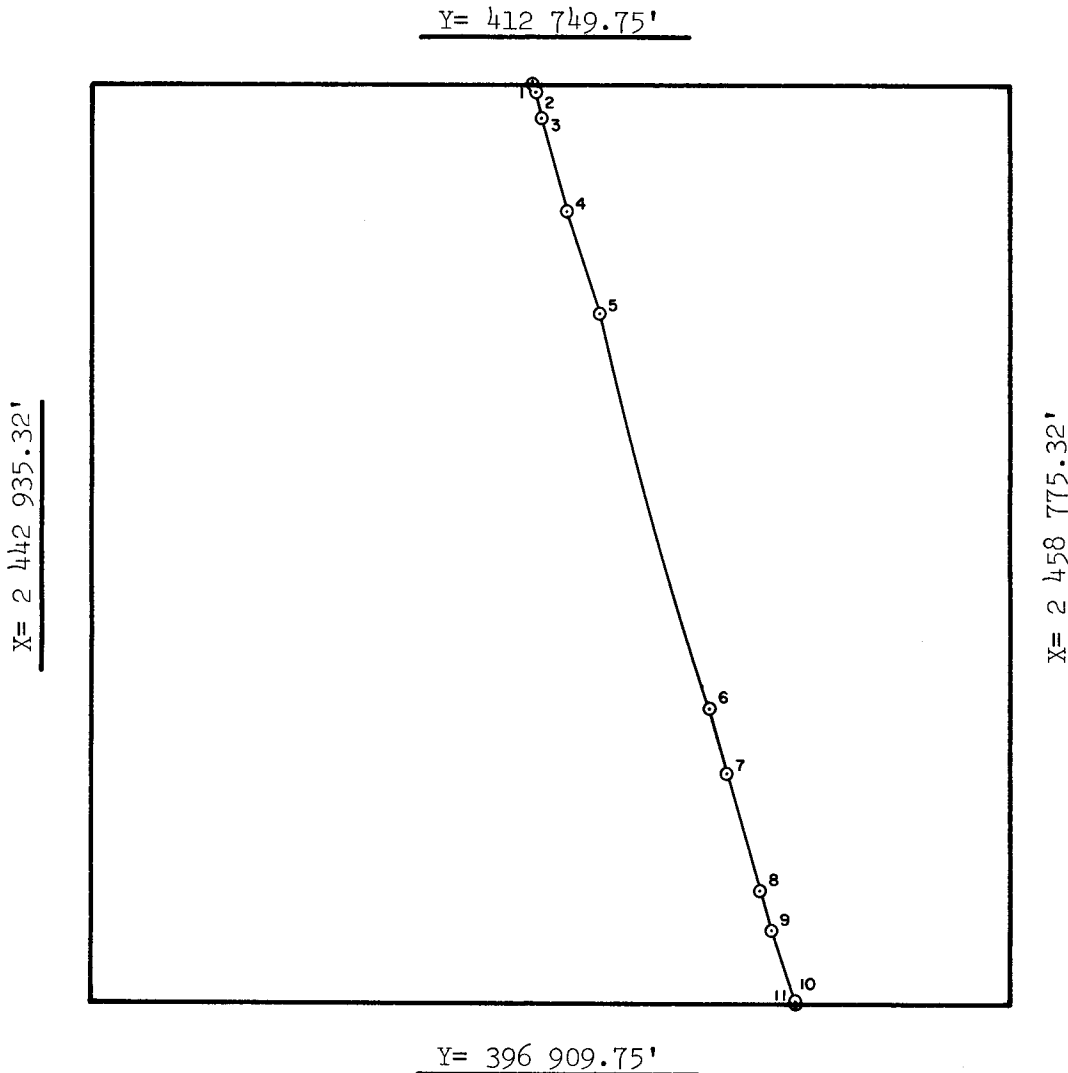
FILE NO.

Sale No. 74
Western Gulf of Mexico
Radius 72 913.24'

UNITED STATES DEPARTMENT OF INTERIOR
~~BUREAU OF LAND MANAGEMENT~~
MINERALS MANAGEMENT SERVICE
SUPPLEMENTAL OFFICIAL
OCS 8-G BLOCK DIAGRAM

NORTH PADRE ISLAND AREA

OPD NO. TEX 2
BLOCK NO. 986
OCS LEASE NO. _____
STATE LEASE NO. _____



INTERSECTIONS

	X	Y
1	2 450 530.77'	412 749.75'
2	2 450 578.26'	412 575.80'
3	2 450 703.69'	412 110.35'
4	2 451 127.09'	410 518.19'
5	2 451 703.13'	408 775.67'
6	2 453 577.92'	402 035.00'
7	2 453 865.65'	400 942.97'
8	2 454 427.65'	398 953.77'
9	2 454 636.34'	398 305.47'
10	2 455 060.42'	396 942.45'
11	2 455 070.24'	396 909.75'

ARC CENTERS

	X	Y
*1-2	2 379 592.93'	395 739.90'
2-3	2 380 239.37'	393 372.13'
*3-4	2 380 239.37'	393 372.13'
*4-5	2 381 435.42'	389 033.54'
5-6	2 382 474.62'	385 889.99'
*6-7	2 383 055.22'	383 517.61'
*7-8	2 383 523.34'	381 740.92'
*8-9	2 384 618.70'	377 863.91'
9-10	2 385 230.49'	375 963.38'
*10-11	2 385 230.49'	375 963.38'

*TANGENT SEGMENT

FEDERAL AREA 2168.60 ac

% _____

STATE AREA _____

% _____

8G AREA 3591.40 ac

% _____

COMPUTATIONS BY RA DATE 3-1-83

DRAFTED BY W. DATE 3-3-83

CHECKED BY TR DATE 4-18-83

FOR THE DIRECTOR

Telund T. Hornakler
DATE 4/18/83

FOR THE STATE

DATE _____