

UNITED STATES DEPARTMENT OF INTERIOR  
~~BUREAU OF LAND MANAGEMENT~~  
MINERALS MANAGEMENT SERVICE

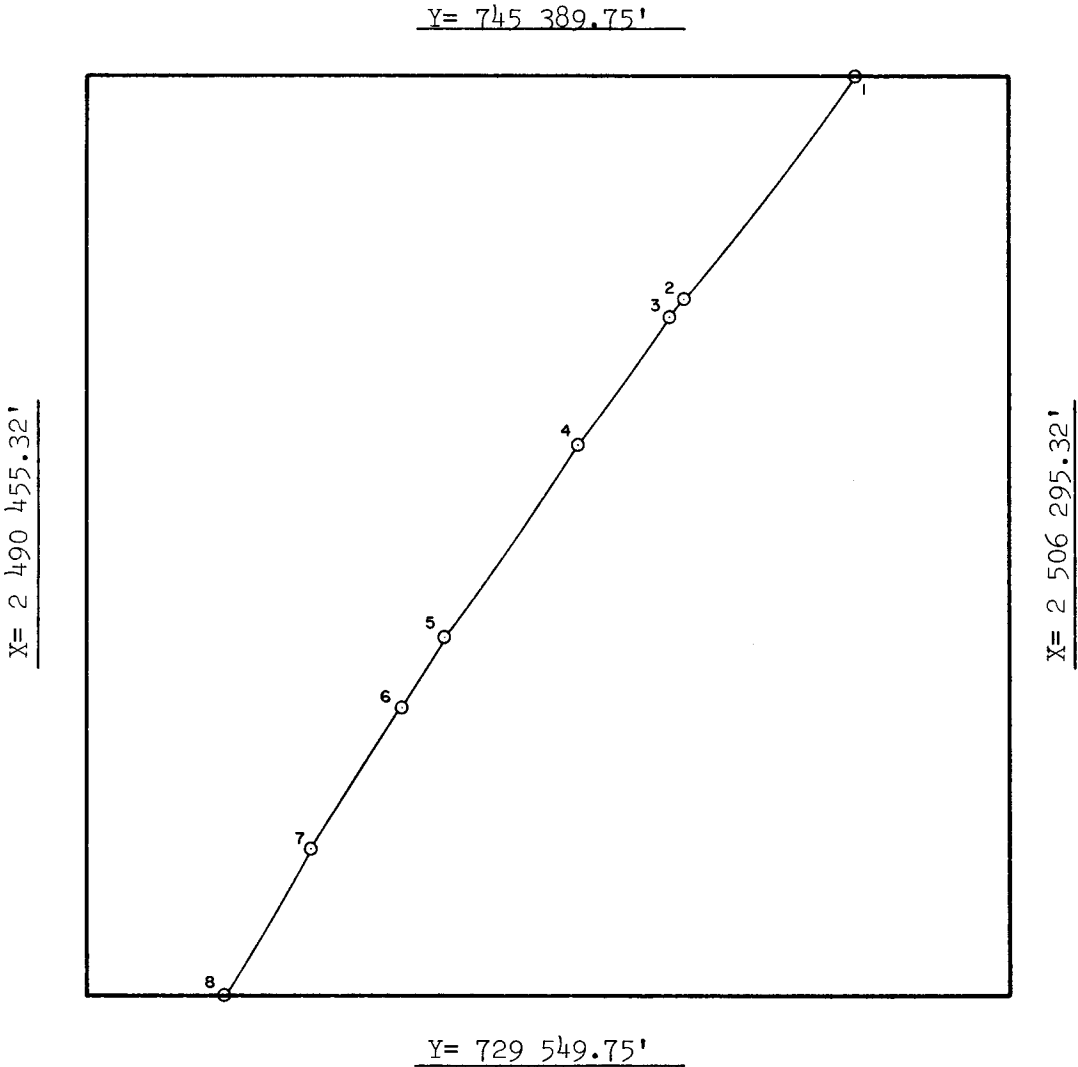
SUPPLEMENTAL OFFICIAL  
OCS 8-G BLOCK DIAGRAM  
MUSTANG ISLAND AREA

OPD NO. TEX MAP 3  
BLOCK NO. 770  
OCS LEASE NO. \_\_\_\_\_  
STATE LEASE NO. \_\_\_\_\_

DISC PAK NO. \_\_\_\_\_

FILE NO. \_\_\_\_\_

Sale No. 74  
Western Gulf of Mexico  
Radius 54 684.93'



INTERSECTIONS

	X	Y
1	2 503 611.73'	745 389.75'
2	2 500 712.69'	741 564.64'
3	2 500 456.13'	741 255.32'
4	2 498 869.23'	739 048.68'
5	2 496 595.18'	735 683.19'
6	2 495 840.52'	734 483.86'
7	2 494 300.90'	732 105.97'
8	2 492 809.14'	729 549.75'

ARC CENTERS

	X	Y
1-2	2 458 621.98'	776 476.15'
*2-3	2 458 621.98'	776 476.15'
3-4	2 455 279.69'	772 069.78'
4-5	2 452 452.61'	767 961.28'
5-6	2 449 937.32'	764 204.86'
*6-7	2 449 937.32'	764 204.86'
7-8	2 446 341.71'	758 380.62'

\*TANGENT SEGMENT

FEDERAL AREA \_\_\_\_\_  
% \_\_\_\_\_

STATE AREA 2729.01 ac  
% \_\_\_\_\_

8G AREA 3030.99 ac  
% \_\_\_\_\_

COMPUTATIONS BY MEU DATE 2-25-83  
DRAFTED BY GV DATE 3-2-83  
CHECKED BY AJW DATE 3/5/83

FOR THE DIRECTOR  
Leland F. Hornmoller  
DATE 4/8/83

FOR THE STATE  
Jack Chesser  
DATE JUN 3 1983