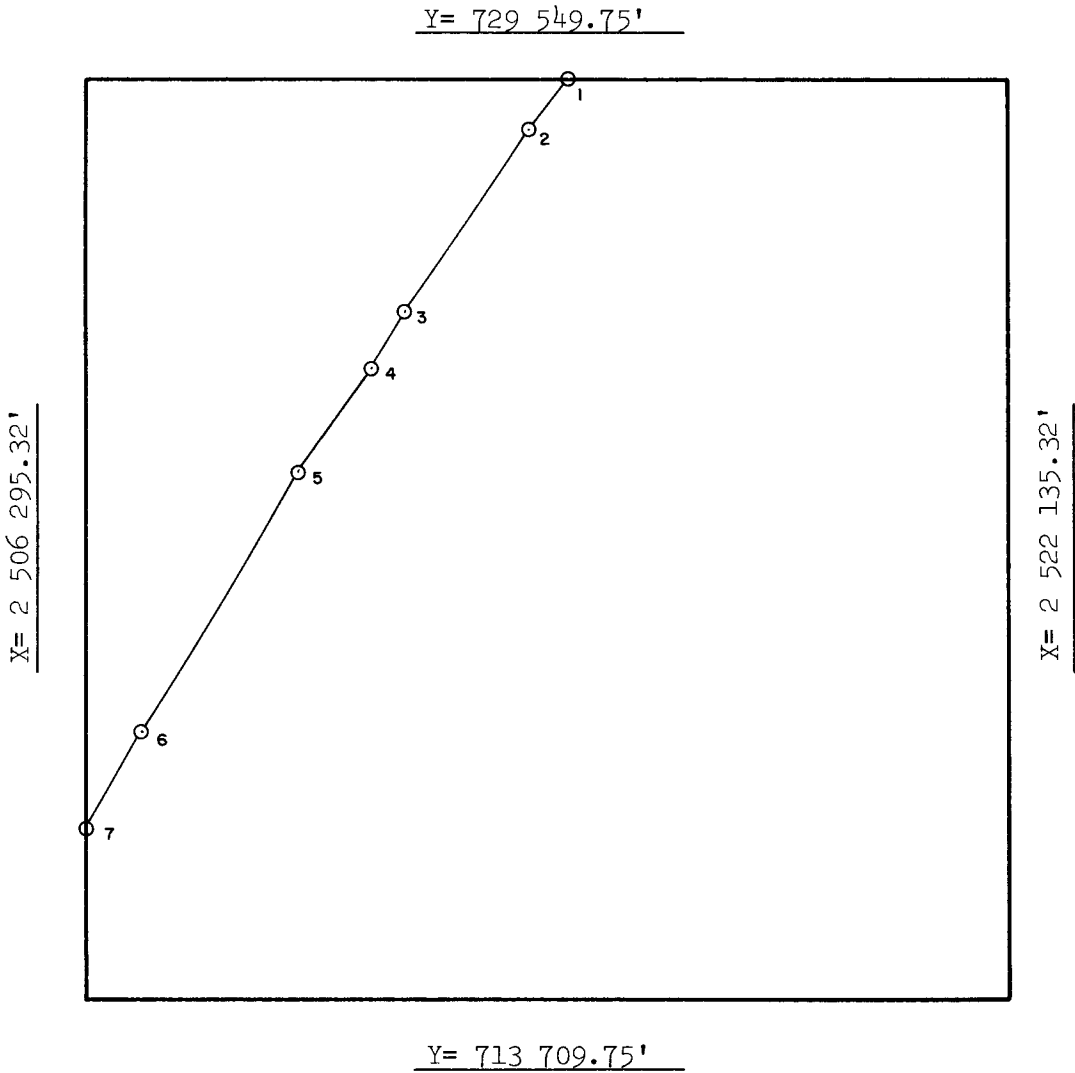


MUSTANG ISLAND AREA



| INTERSECTIONS | | | ARC CENTERS | | |
|---------------|---------------|-------------|-------------|---------------|-------------|
| | X | Y | | X | Y |
| 1 | 2 514 511.33' | 729 549.75' | 1-2 | 2 455 279.69' | 772 069.78' |
| 2 | 2 513 897.60' | 728 707.58' | 2-3 | 2 452 452.61' | 767 961.28' |
| 3 | 2 511 751.25' | 725 534.73' | 3-4 | 2 449 937.32' | 764 204.86' |
| 4 | 2 511 141.58' | 724 576.86' | *4-5 | 2 449 937.32' | 764 204.86' |
| 5 | 2 509 939.62' | 722 720.47' | 5-6 | 2 446 341.71' | 758 380.62' |
| 6 | 2 507 247.19' | 718 294.93' | 6-7 | 2 443 300.19' | 753 325.22' |
| 7 | 2 506 295.32' | 716 610.72' | | | |
| | | | | | |
| | | | | | |
| | | | | | |
| | | | | | |

*TANGENT SEGMENT

FEDERAL AREA 4580.06 ac

STATE AREA

8G AREA 1179.94 ac

%

%

%

COMPUTATIONS BY JEN DATE 2-25-83

FOR THE DIRECTOR

FOR THE STATE

DRAFTED BY QV DATE 3-2-83

DATE 4/13/83

CHECKED BY JBP DATE 4-18-83

DATE