

DISC PAK NO.

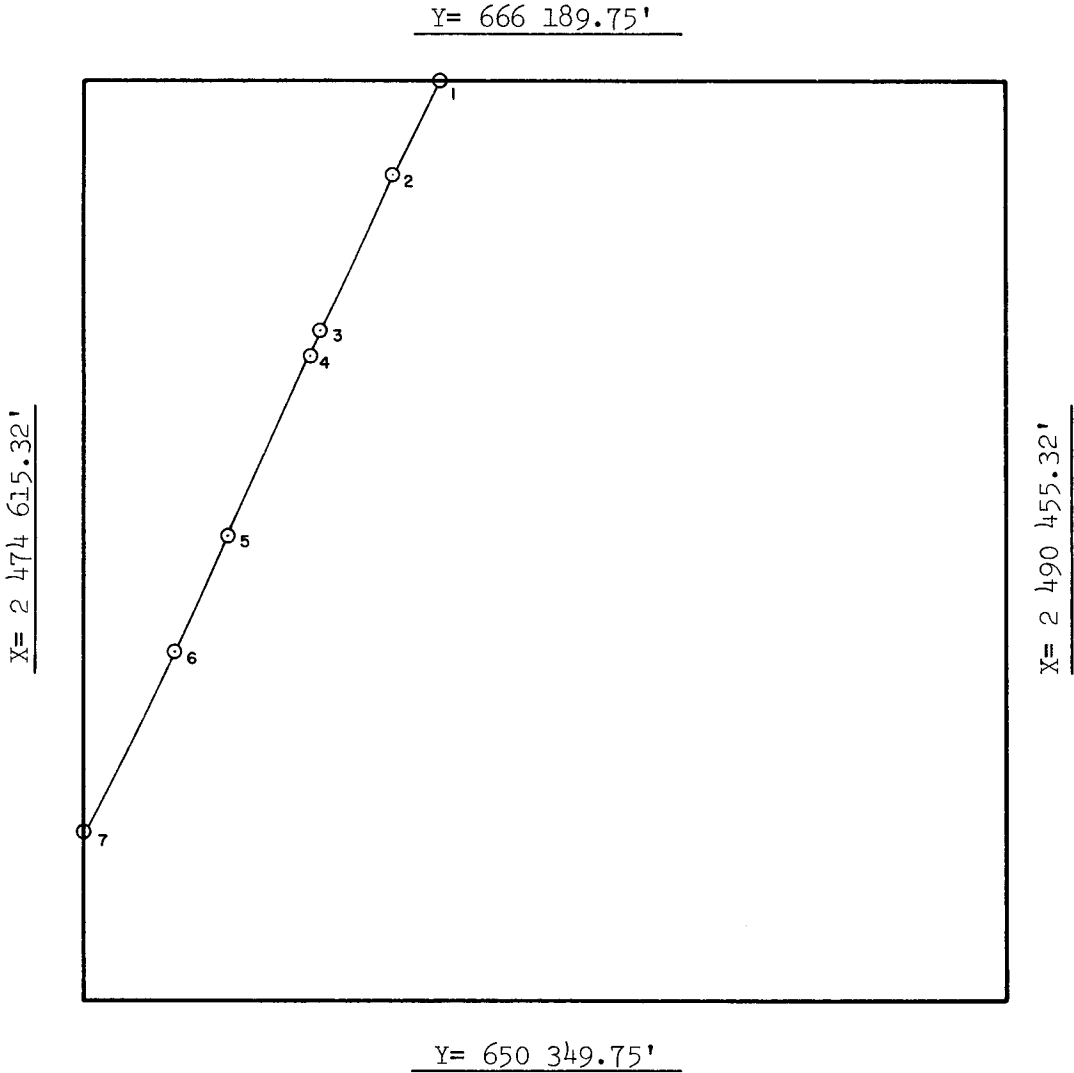
FILE NO.

Sale No. 74
Western Gulf of Mexico
Radius 72 913.24'

UNITED STATES DEPARTMENT OF INTERIOR
~~BUREAU OF LAND MANAGEMENT~~
MINERALS MANAGEMENT SERVICE
SUPPLEMENTAL OFFICIAL
OCS 8-G BLOCK DIAGRAM

MUSTANG ISLAND AREA

OPD NO. TEX 3
BLOCK NO. 823
OCS LEASE NO. _____
STATE LEASE NO. _____



INTERSECTIONS

	X	Y
1	2 480 684.08'	666 189.75'
2	2 479 880.26'	664 556.87'
3	2 478 688.80'	661 921.10'
4	2 478 482.40'	661 458.39'
5	2 477 108.14'	658 405.98'
6	2 476 153.02'	656 369.06'
7	2 474 615.32'	653 231.64'

ARC CENTERS

	X	Y
1-2	2 414 870.77'	697 573.64'
2-3	2 412 857.14'	693 266.49'
3-4	2 411 996.76'	691 391.64'
*4-5	2 411 996.76'	691 391.64'
5-6	2 410 622.50'	688 339.23'
6-7	2 409 930.56'	686 880.15'

*TANGENT SEGMENT

FEDERAL AREA 4848.21 ac
% _____

STATE AREA _____
% _____

8G AREA 911.79 ac
% _____

COMPUTATIONS BY MDV DATE 2-26-83
DRAFTED BY QV DATE 3-2-83
CHECKED BY FDP DATE 4-18-83

FOR THE DIRECTOR
Telund / Hermablen
DATE 4/18/83
FOR THE STATE
DATE _____