

DISC PAK NO.

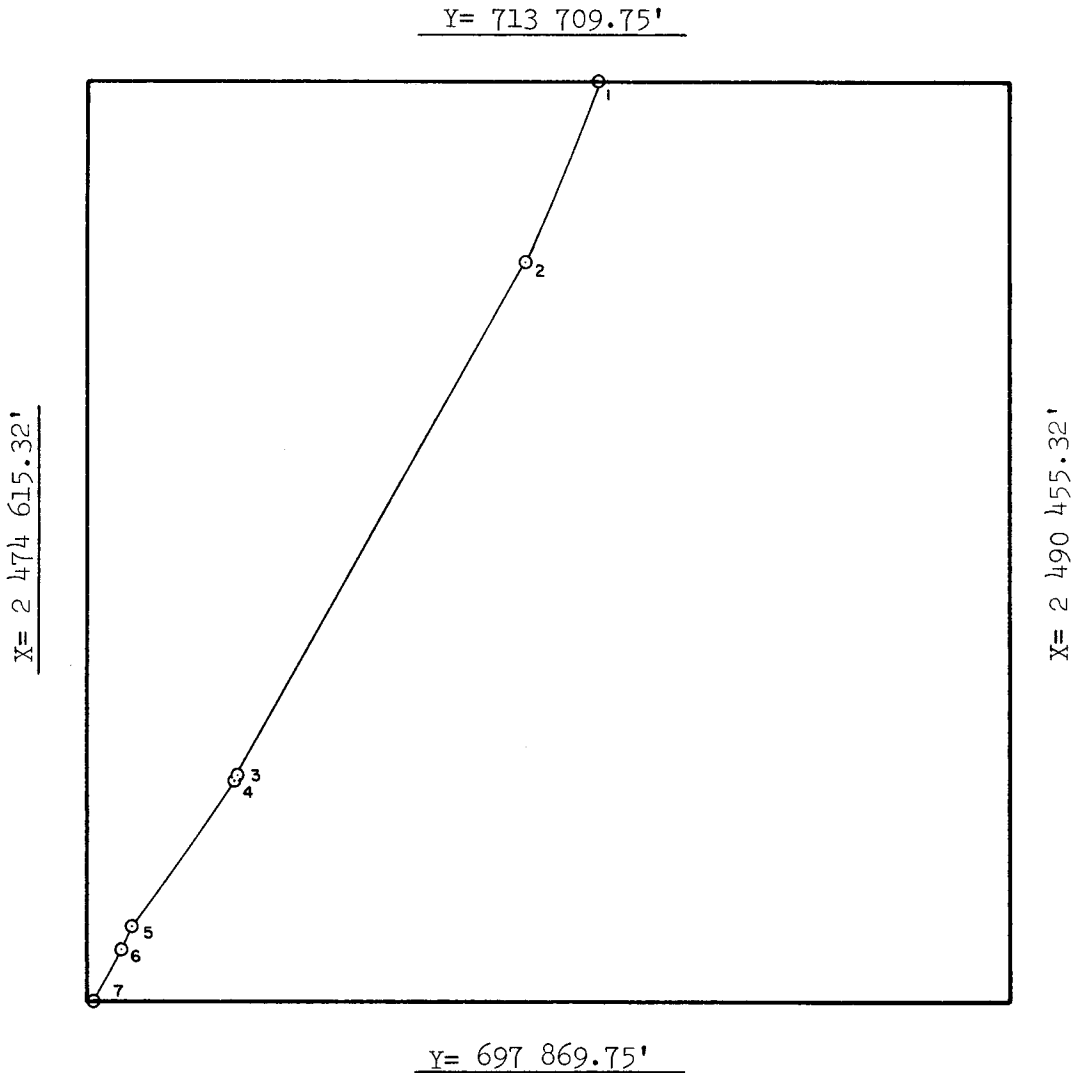
FILE NO.

Sale No. 74
Western Gulf of Mexico
Radius 54 684.93'

UNITED STATES DEPARTMENT OF INTERIOR
~~BUREAU OF LAND MANAGEMENT~~
MINERALS MANAGEMENT SERVICE
SUPPLEMENTAL OFFICIAL
OCS 8-G BLOCK DIAGRAM

MUSTANG ISLAND AREA

OPD NO. TEX MAP 3
BLOCK NO. 793
OCS LEASE NO. _____
STATE LEASE NO. _____



INTERSECTIONS

	X	Y
1	2 483 404.59'	713 709.75'
2	2 482 144.44'	710 612.87'
3	2 477 226.15'	701 747.67'
4	2 477 193.45'	701 678.53'
5	2 475 401.77'	699 194.86'
6	2 475 216.93'	698 824.38'
7	2 474 728.89'	697 869.75'

ARC CENTERS

	X	Y
1-2	2 432 146.07'	732 762.47'
*2-3	2 437 520.00'	742 900.00'
*3-4	2 428 548.00'	726 728.00'
4-5	2 431 965.41'	732 417.20'
*5-6	2 427 675.18'	726 026.01'
6-7	2 426 284.34'	723 238.37'

*TANGENT SEGMENT

FEDERAL AREA _____
% _____

STATE AREA 1728.03 ac
% _____

8G AREA 4031.97 ac
% _____

COMPUTATIONS BY MEV DATE 2-25-83
DRAFTED BY GV DATE 3-2-83
CHECKED BY AJO DATE 3/13/83

FOR THE DIRECTOR

DATE

FOR THE STATE

DATE

4/18/83
JUN 03 1983