

UNITED STATES DEPARTMENT OF INTERIOR  
~~BUREAU OF LAND MANAGEMENT~~  
MINERALS MANAGEMENT SERVICE  
SUPPLEMENTAL OFFICIAL  
OCS 8-G BLOCK DIAGRAM

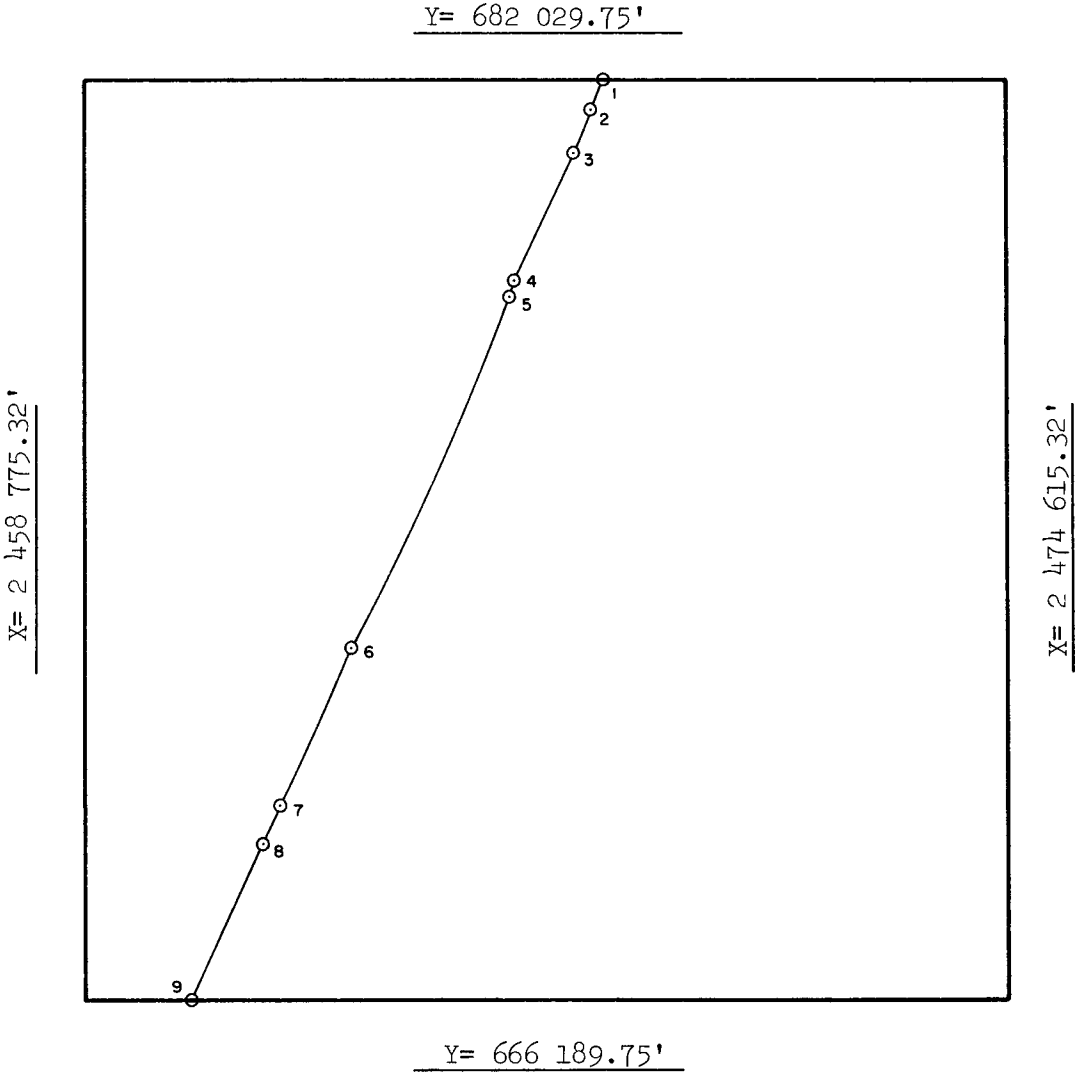
DISC PAK NO.

FILE NO.

Sale No. 74  
Western Gulf of Mexico  
Radius 54 684.93'

MUSTANG ISLAND AREA

OPD NO. TEX MAP 3  
BLOCK NO. 816  
OCS LEASE NO. \_\_\_\_\_  
STATE LEASE NO. \_\_\_\_\_



INTERSECTIONS

	X	Y
1	2 467 710.49'	682 029.75'
2	2 467 494.23'	681 537.44'
3	2 467 162.47'	680 797.15'
4	2 466 166.03'	678 617.15'
5	2 466 048.73'	678 305.59'
6	2 463 355.69'	672 282.25'
7	2 462 119.47'	669 524.87'
8	2 461 860.99'	668 941.70'
9	2 460 622.00'	666 189.75'

ARC CENTERS

	X	Y
*1-2	2 419 193.14'	707 551.59'
2-3	2 417 426.79'	703 530.47'
*3-4	2 417 426.79'	703 530.47'
*4-5	2 415 649.73'	699 642.64'
5-6	2 414 870.77'	697 573.64'
6-7	2 412 857.14'	693 266.49'
7-8	2 411 996.76'	691 391.64'
*8-9	2 411 996.76'	691 391.64'

\*TANGENT SEGMENT

FEDERAL AREA \_\_\_\_\_ STATE AREA 1972.64 ac 8G AREA 3787.36 ac  
% \_\_\_\_\_ % \_\_\_\_\_ % \_\_\_\_\_

COMPUTATIONS BY MEV DATE 2-25-83  
DRAFTED BY QV DATE 3-2-83  
CHECKED BY AJD DATE 3/3/83

FOR THE DIRECTOR

Leland F. Hornsby  
DATE 4/10/83

FOR THE STATE

Paul Gibson  
DATE JUN 3 1983