

UNITED STATES DEPARTMENT OF INTERIOR

~~BUREAU OF LAND MANAGEMENT~~  
MINERALS MANAGEMENT SERVICE

SUPPLEMENTAL OFFICIAL  
OCS 8-G BLOCK DIAGRAM

MATAGORDA ISLAND AREA

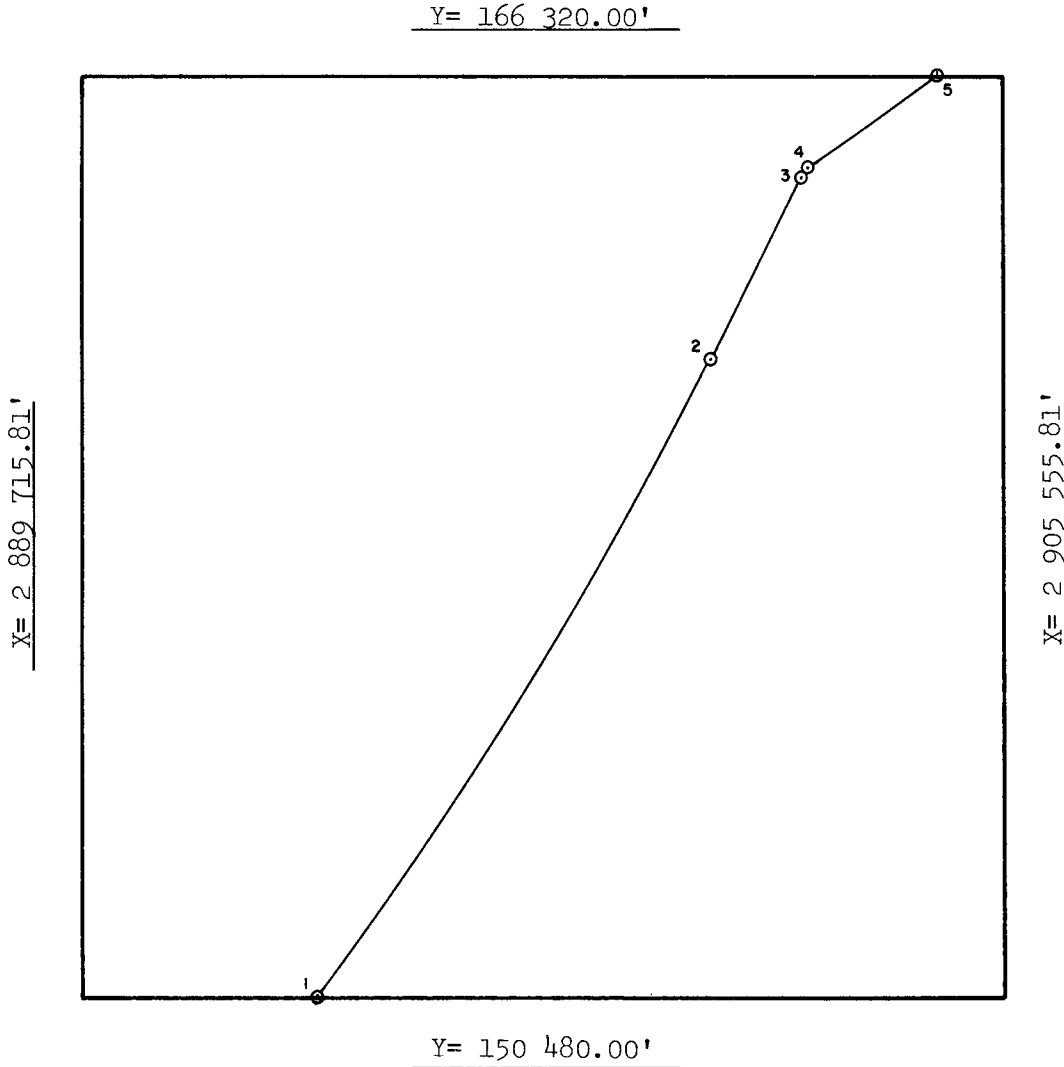
DISC PAK NO.

FILE NO.

Sale No. 74  
Radius 72 913.24'

Western Gulf of Mexico

OPD NO. TEX 4  
BLOCK NO. 566  
OCS LEASE NO. \_\_\_\_\_  
STATE LEASE NO. \_\_\_\_\_



INTERSECTIONS

	X	Y
1	2 893 786.04'	150 480.00'
2	2 900 520.93'	161 412.87'
3	2 902 088.70'	164 546.06'
4	2 902 173.35'	164 715.79'
5	2 904 428.01'	166 320.00'

ARC CENTERS

	X	Y
1-2	2 835 315.13'	194 040.22'
*2-3	2 835 315.13'	194 040.22'
3-4	2 836 882.90'	197 173.41'
4-5	2 861 037.52'	224 916.98'

\*TANGENT SEGMENT

FEDERAL AREA 2454.77 ac

STATE AREA \_\_\_\_\_

8G AREA 3305.23 ac

% \_\_\_\_\_

% \_\_\_\_\_

% \_\_\_\_\_

COMPUTATIONS BY GKC DATE 3/16/83

FOR THE DIRECTOR

FOR THE STATE

DRAFTED BY JK DATE 3-18-83

Teland & Hermahlen  
DATE 4/18/83

CHECKED BY JBR DATE 4-18-83

DATE \_\_\_\_\_