

UNITED STATES DEPARTMENT OF INTERIOR  
~~BUREAU OF LAND MANAGEMENT~~  
MINERALS MANAGEMENT SERVICE

SUPPLEMENTAL OFFICIAL  
OCS 8-G BLOCK DIAGRAM

BRAZOS AREA

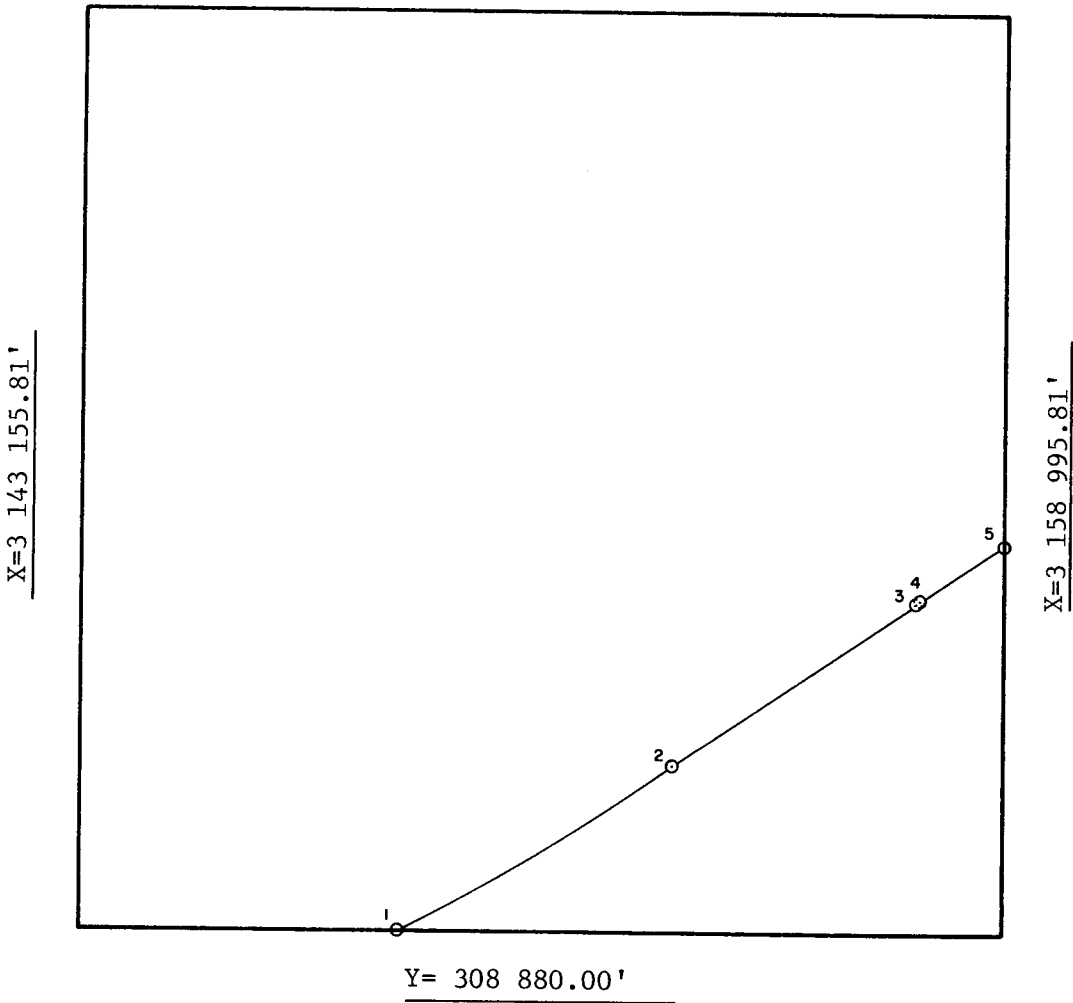
OPD NO. TEX 5  
BLOCK NO. 376  
OCS LEASE NO. \_\_\_\_\_  
STATE LEASE NO. \_\_\_\_\_

DISC PAK NO.

FILE NO.

Sale No. 74  
Radius 72913.24'  
Western Gulf of Mexico

Y= 324 720.00'



INTERSECTIONS

	X	Y
1	3 148 607.90'	308 880.00'
2	3 153 357.17'	311 830.87'
3	3 157 539.21'	314 657.15'
4	3 157 593.91'	314 694.16'
5	3 158 995.81'	315 643.43'

ARC CENTERS

	X	Y
1-2	3 112 530.43'	372 242.11'
*2-3	3 112 530.43'	372 242.11'
3-4	3 116 712.47'	375 068.39'
*4-5	3 116 712.47'	375 068.39'

\*TANGENT SEGMENT

FEDERAL AREA 784.92ac  
% \_\_\_\_\_

STATE AREA \_\_\_\_\_  
% \_\_\_\_\_

8G AREA 4975.08ac  
% \_\_\_\_\_

COMPUTATIONS BY gm DATE 3-9-83  
DRAFTED BY JK DATE 4-14-83  
CHECKED BY APW DATE 22/3/83

FOR THE DIRECTOR  
Islandt-Thormahlen  
DATE 4/13/83

FOR THE STATE  
\_\_\_\_\_  
DATE \_\_\_\_\_