

UNITED STATES DEPARTMENT OF INTERIOR
~~BUREAU OF LAND MANAGEMENT~~
MINERALS MANAGEMENT SERVICE

DISC PAK NO.

FILE NO.

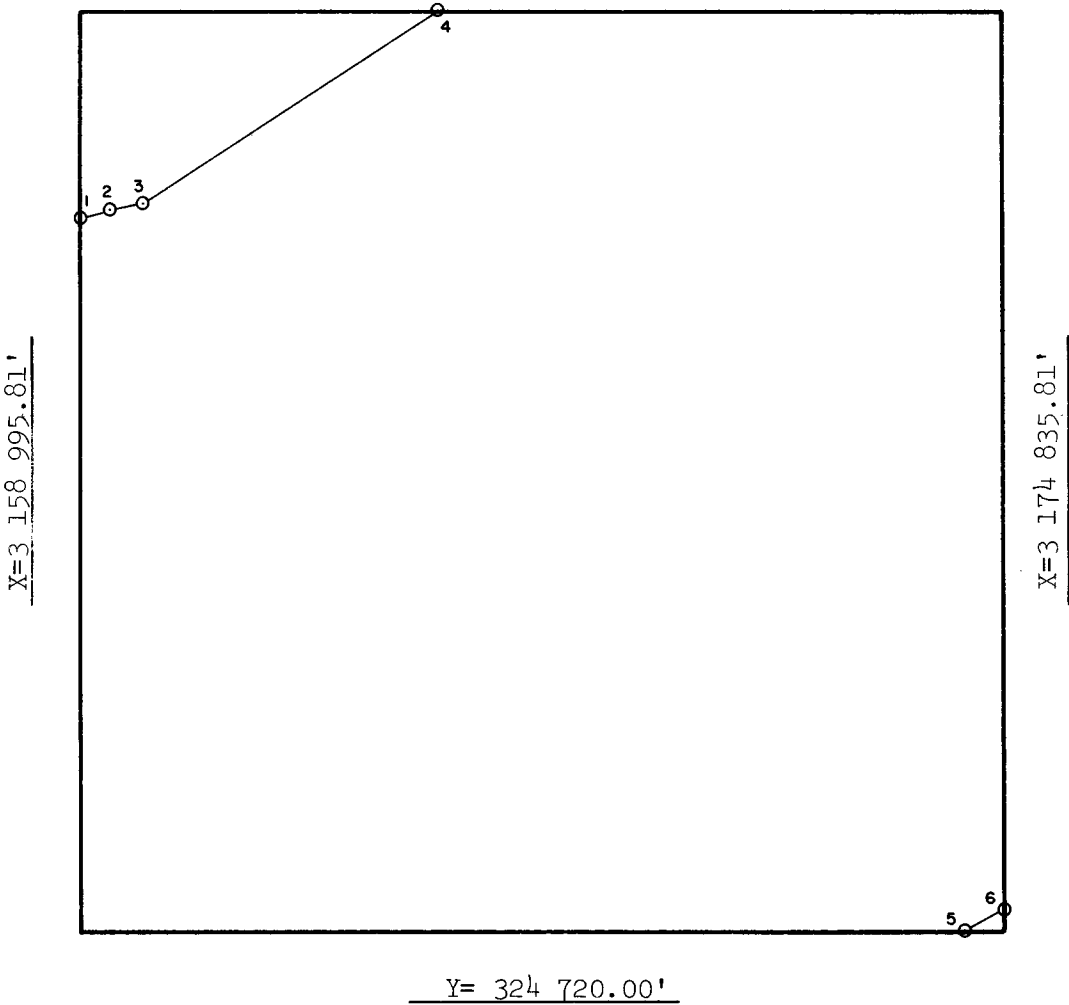
Sale No. 74
Radius 54684.93'
72913.24'
Western Gulf of Mexico

BRAZOS AREA

OPD NO. TEX 5
BLOCK NO. 365
OCS LEASE NO. _____
STATE LEASE NO. _____

SUPPLEMENTAL OFFICIAL
OCS 8-G BLOCK DIAGRAM

Y= 340 560.00'



INTERSECTIONS

ARC CENTERS

	X	Y
1	3 158 995.81'	337 038.30'
2	3 159 482.25'	337 125.97'
3	3 160 057.26'	337 232.78'
4	3 165 140.84'	340 560.00'
5	3 174 224.83'	324 720.00'
6	3 174 835.81'	325 119.89'

	X	Y
*1-2	3 146 688.06'	390 386.06'
2-3	3 149 782.58'	390 943.79'
*3-4	3 128 083.00'	381 662.00'
*5-6	3 128 083.00'	381 662.00'

*TANGENT SEGMENT

FEDERAL AREA 2.80ac
% _____

STATE AREA 277.62ac
% _____

8G AREA 5479.58ac
% _____

COMPUTATIONS BY gm DATE 3-9-83
DRAFTED BY WV DATE 4-14-83
CHECKED BY AJD DATE 22/3/83

FOR THE DIRECTOR
Toland J. Hornshuler
DATE 4/10/83

FOR THE STATE
Jack Gibson
DATE JUN 03 1983