

UNITED STATES DEPARTMENT OF INTERIOR  
~~BUREAU OF LAND MANAGEMENT~~  
~~MINERALS MANAGEMENT SERVICE~~

DISC PAK NO.

FILE NO.

Sale No. 74  
Radius 54684.93'  
72913.24'

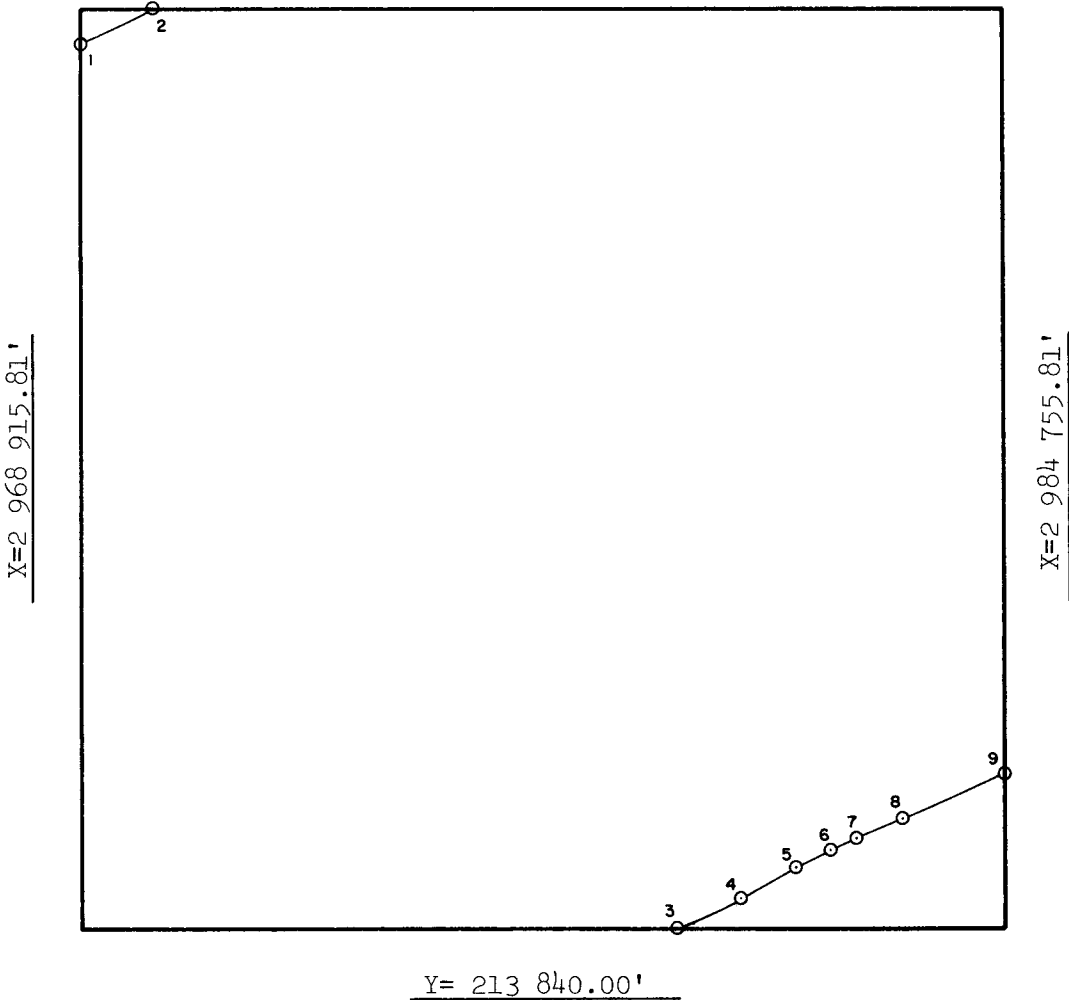
Western Gulf of Mexico

SUPPLEMENTAL OFFICIAL  
OCS 8-G BLOCK DIAGRAM

BRAZOS AREA

OPD NO. TEX 5  
BLOCK NO. 489  
OCS LEASE NO. \_\_\_\_\_  
STATE LEASE NO. \_\_\_\_\_

Y= 229 680.00'



INTERSECTIONS

	X	Y
1	2 968 915.81'	229 079.47'
2	2 970 115.07'	229 680.00'
3	2 979 160.10'	213 840.00'
4	2 980 219.16'	214 412.19'
5	2 981 184.70'	214 944.20'
6	2 981 753.34'	215 235.25'
7	2 982 223.36'	215 451.23'
8	2 983 007.26'	215 783.91'
9	2 984 755.81'	216 553.17'

ARC CENTERS

	X	Y
1-2	2 945 032.09'	278 273.06'
3-4	2 945 032.09'	278 273.06'
*4-5	2 945 032.09'	278 273.06'
*5-6	2 946 972.74'	279 342.35'
*6-7	2 949 906.61'	280 844.00'
*7-8	2 952 752.44'	282 151.70'
8-9	2 954 522.40'	282 902.86'

\*TANGENT SEGMENT

FEDERAL AREA 183.30ac

% \_\_\_\_\_

STATE AREA 8.35ac

% \_\_\_\_\_

8G AREA 5568.35ac

% \_\_\_\_\_

COMPUTATIONS BY jm DATE 3-9-83

DRAFTED BY jk DATE 4-14-83

CHECKED BY 1/d DATE 22/3/83

FOR THE DIRECTOR

DATE 4/10/83

FOR THE STATE

DATE JUN 03 1983