

UNITED STATES DEPARTMENT OF INTERIOR  
~~BUREAU OF LAND MANAGEMENT~~  
MINERALS MANAGEMENT SERVICE

SUPPLEMENTAL OFFICIAL  
OCS 8-G BLOCK DIAGRAM

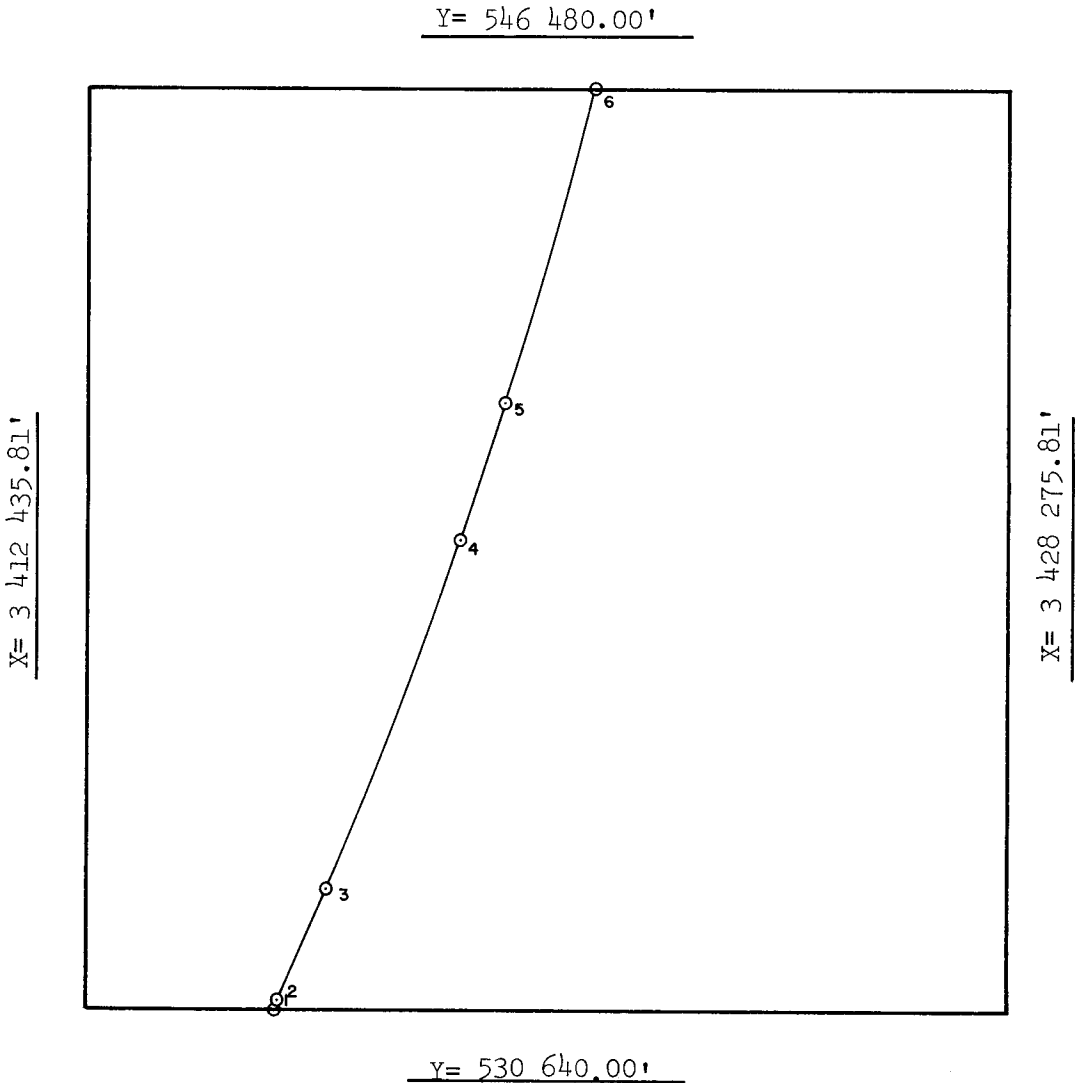
GALVESTON AREA

DISC PAK NO.

FILE NO.

Sale No. 74  
Western Gulf of Mexico  
Radius 72 913.24'

OPD NO. TEX 6  
BLOCK NO. 152  
OCS LEASE NO. \_\_\_\_\_  
STATE LEASE NO. \_\_\_\_\_



INTERSECTIONS

	X	Y
1	3 415 738.38'	530 640.00'
2	3 415 818.98'	530 828.58'
3	3 416 618.98'	532 707.58'
4	3 418 881.00'	538 749.01'
5	3 419 638.00'	541 080.01'
6	3 421 164.62'	546 480.00'

ARC CENTERS

	X	Y
1-2	3 348 733.00'	559 391.00'
*2-3	3 348 733.00'	559 391.00'
3-4	3 349 533.00'	561 270.00'
*4-5	3 349 533.00'	561 270.00'
5-6	3 350 290.00'	563 601.00'

\*TANGENT SEGMENT

FEDERAL AREA 3481.00 ac  
% \_\_\_\_\_

STATE AREA \_\_\_\_\_  
% \_\_\_\_\_

8G AREA 2279.00 ac  
% \_\_\_\_\_

COMPUTATIONS BY RS DATE 4-4-83

DRAFTED BY JK DATE 4-6-83

CHECKED BY AJO DATE 4/7/83

FOR THE DIRECTOR

Toland H. Harnack  
DATE 4/20/83

FOR THE STATE

DATE \_\_\_\_\_