

UNITED STATES DEPARTMENT OF INTERIOR  
~~BUREAU OF LAND MANAGEMENT~~  
MINERALS MANAGEMENT SERVICE

SUPPLEMENTAL OFFICIAL  
OCS 8-G BLOCK DIAGRAM

GALVESTON AREA

DISC PAK NO.

FILE NO.

Sale No. 74  
Western Gulf of Mexico  
Radius 54 684.93'

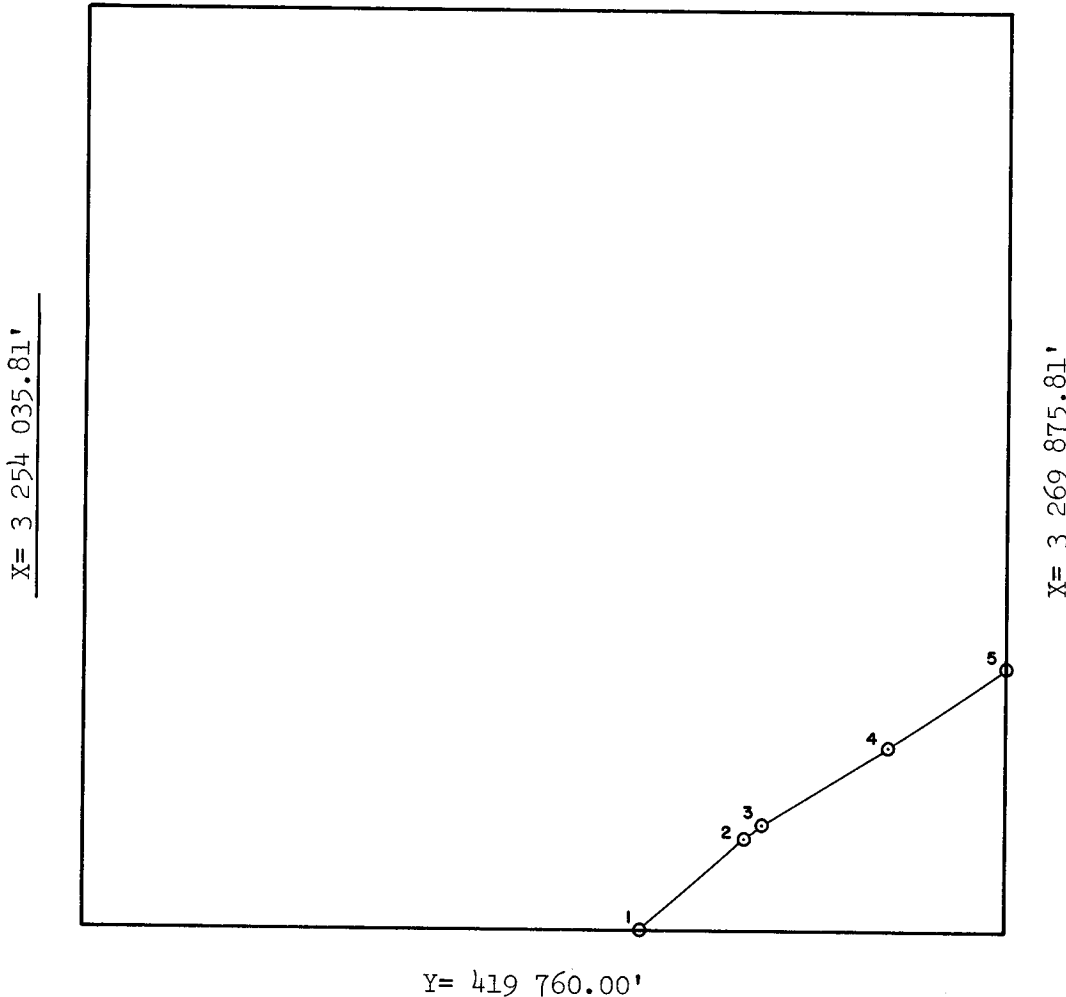
OPD NO. TEX 6

BLOCK NO. 275

OCS LEASE NO. \_\_\_\_\_

STATE LEASE NO. \_\_\_\_\_

Y= 435 600.00'



INTERSECTIONS

	X	Y
1	3 263 566.59'	419 760.00'
2	3 265 357.35'	421 335.26'
3	3 265 683.05'	421 566.25'
4	3 267 865.63'	422 928.01'
5	3 269 875.81'	424 244.44'

ARC CENTERS

	X	Y
1-2	3 228 352.03'	461 597.50'
*2-3	3 231 320.54'	464 237.63'
*3-4	3 235 366.04'	467 106.64'
4-5	3 238 918.55'	469 323.14'

\*TANGENT SEGMENT

FEDERAL AREA \_\_\_\_\_

% \_\_\_\_\_

STATE AREA 5414.75 ac

% \_\_\_\_\_

8G AREA 345.25 ac

% \_\_\_\_\_

COMPUTATIONS BY R2 DATE 4-19-83

DRAFTED BY QV DATE 4-20-83

CHECKED BY FBP DATE 4-20-83

FOR THE DIRECTOR

Teland J. Harnish  
DATE 4/20/83

FOR THE STATE

Josh Gibson  
DATE JUN 03 1983