

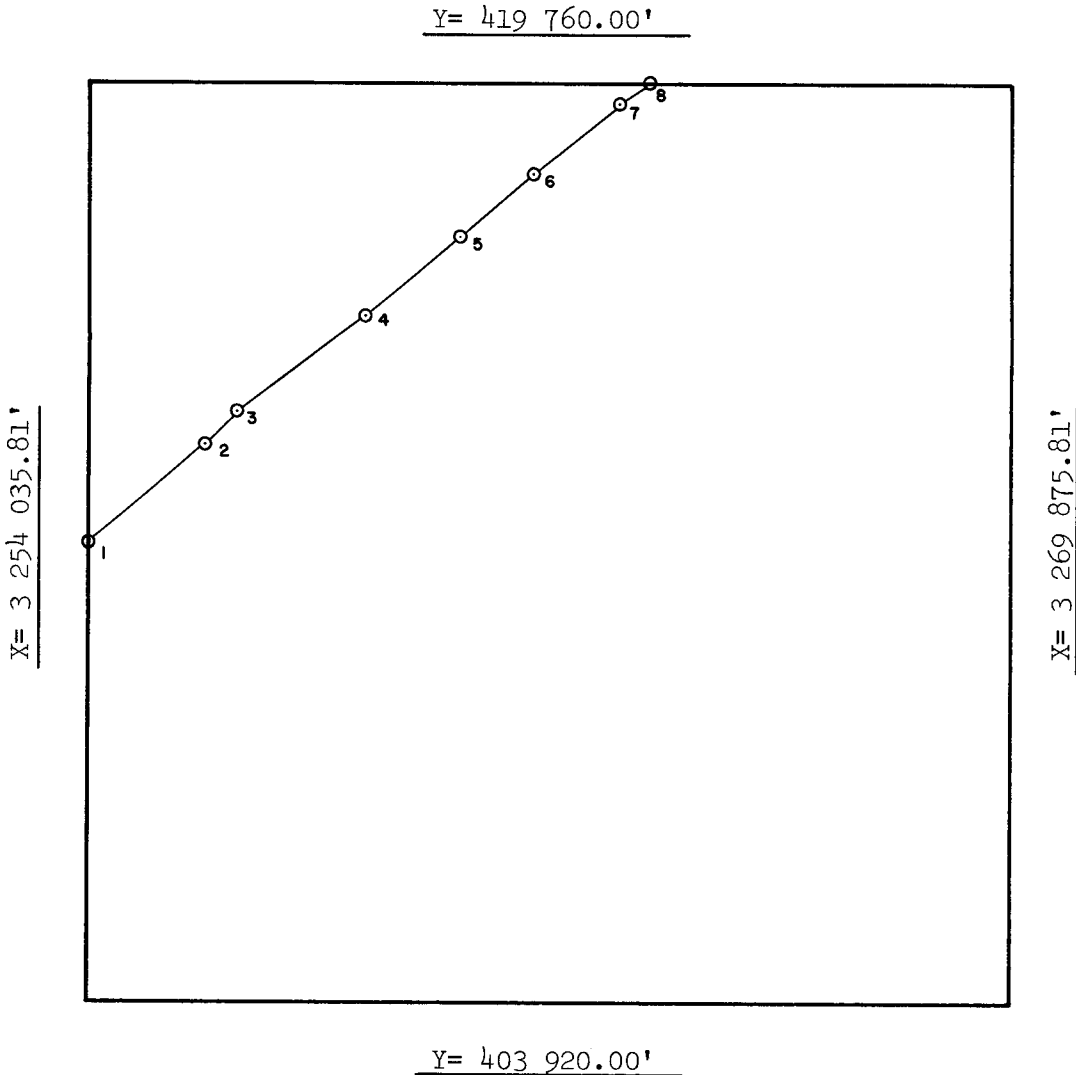
UNITED STATES DEPARTMENT OF INTERIOR
~~BUREAU OF LAND MANAGEMENT~~
MINERALS MANAGEMENT SERVICE
SUPPLEMENTAL OFFICIAL
OCS 8-G BLOCK DIAGRAM
GALVESTON AREA

DISC PAK NO.

FILE NO.

Sale No. 74
Western Gulf of Mexico
Radius 54 684.93'

OPD NO. TEX 6
BLOCK NO. 281
OCS LEASE NO. _____
STATE LEASE NO. _____



INTERSECTIONS

	X	Y
1	3 254 035.81'	411 888.54'
2	3 256 039.51'	413 577.44'
3	3 256 601.47'	414 074.63'
4	3 258 779.81'	415 787.87'
5	3 260 398.81'	417 112.08'
6	3 261 666.45'	418 190.02'
7	3 263 134.15'	419 399.80'
8	3 263 566.59'	419 760.00'

ARC CENTERS

	X	Y
1-2	3 219 804.15'	454 534.00'
*2-3	3 219 804.15'	454 534.00'
*3-4	3 221 876.75'	456 335.72'
4-5	3 224 973.60'	458 771.37'
*5-6	3 224 973.60'	458 771.37'
*6-7	3 226 560.63'	460 120.91'
7-8	3 228 352.03'	461 597.50'

*TANGENT SEGMENT

FEDERAL AREA _____
% _____

STATE AREA 860.91 ac
% _____

8G AREA 4899.09 ac
% _____

COMPUTATIONS BY RL DATE 4-19-83

DRAFTED BY QV DATE 4-20-83

CHECKED BY FBP DATE 4-20-83

FOR THE DIRECTOR

Teland & Hornsby
DATE 4/20/83

FOR THE STATE

Jack Gibson
DATE JUN 03 1983