

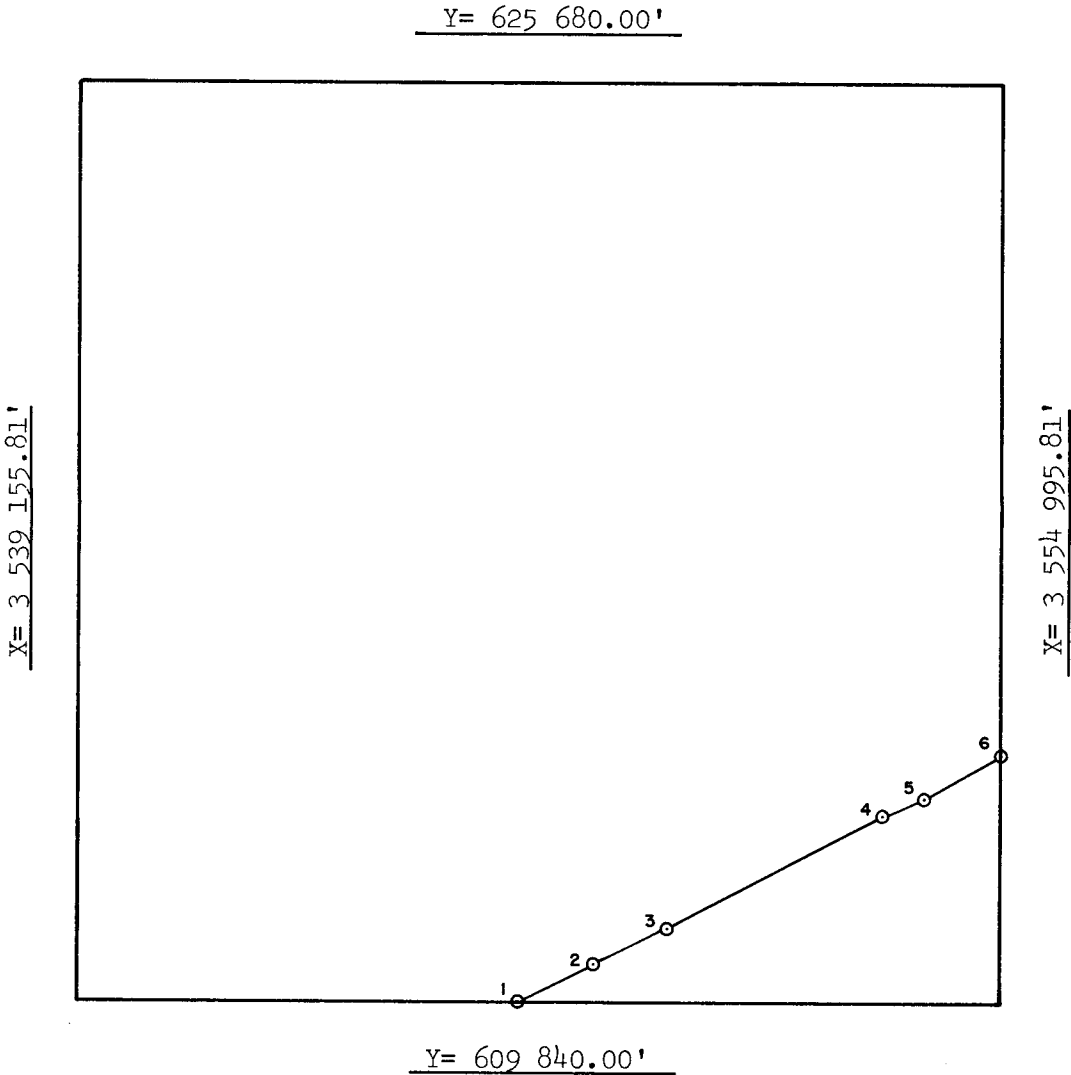
UNITED STATES DEPARTMENT OF INTERIOR  
~~BUREAU OF LAND MANAGEMENT~~  
MINERALS MANAGEMENT SERVICE  
SUPPLEMENTAL OFFICIAL  
OCS 8-G BLOCK DIAGRAM

DISC PAK NO.

FILE NO.

Sale No. 74  
Western Gulf of Mexico  
Radius 72 913.24'

OPD NO. TEX 7  
BLOCK NO. 52  
OCS LEASE NO. \_\_\_\_\_  
STATE LEASE NO. \_\_\_\_\_



INTERSECTIONS

	X	Y
1	3 546 682.36'	609 840.00'
2	3 547 968.09'	610 467.41'
3	3 549 238.52'	611 102.75'
4	3 552 943.57'	613 000.98'
5	3 553 683.30'	613 385.32'
6	3 554 995.81'	614 076.82'

ARC CENTERS

	X	Y
*1-2	3 512 714.27'	674 395.57'
2-3	3 515 991.90'	675 994.99'
*3-4	3 515 991.90'	675 994.99'
4-5	3 519 696.95'	677 893.22'
*5-6	3 519 696.95'	677 893.22'

\*TANGENT SEGMENT

FEDERAL AREA 399.05 ac  
% \_\_\_\_\_

STATE AREA \_\_\_\_\_  
% \_\_\_\_\_

8G AREA 5360.95 ac  
% \_\_\_\_\_

COMPUTATIONS BY PP DATE 3/83  
DRAFTED BY JV DATE 4-8-83  
CHECKED BY AJD DATE 4/12/83

FOR THE DIRECTOR  
Isabel J. Hermaklen  
DATE 4/20/83

FOR THE STATE  
\_\_\_\_\_  
DATE \_\_\_\_\_