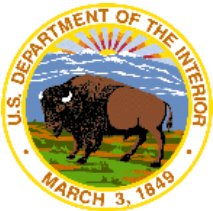


Unsolicited Lease Requests Oahu Northwest and Oahu South

Tracy Logan

Renewable Energy Specialist
Bureau of Ocean Energy Management
Pacific OCS Region

June 3, 2015 • Honolulu, Hawaii



In Jan 2015, AW Hawaii Wind, LLC. (AWH) submitted two unsolicited lease requests to BOEM

- Oahu Northwest Project
- Oahu South Project

Each project proposes an offshore wind facility with a capacity of 408 megawatts (MW) of renewable energy generated by 51 floating 8 MW turbines

- The energy generated by the projects would be transmitted to Oahu by undersea cable



Facilities

- WindFloat floating platform
- 6-8 MW turbines
- Component assembly in dry dock (Barbers Point Harbor)
- After assembly, turbines towed to lease site(s) for installation and interconnection



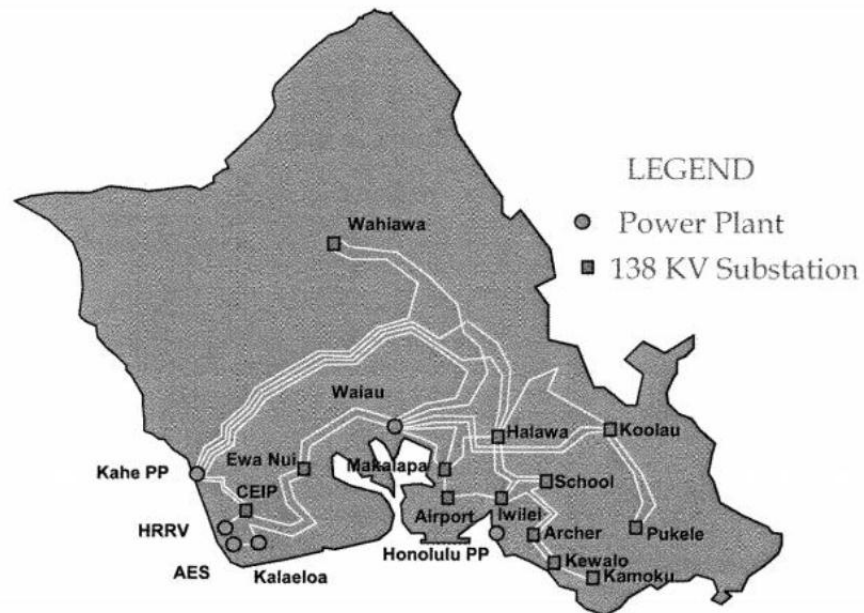
Mooring System

- Drag embedment anchors



Options for interconnection

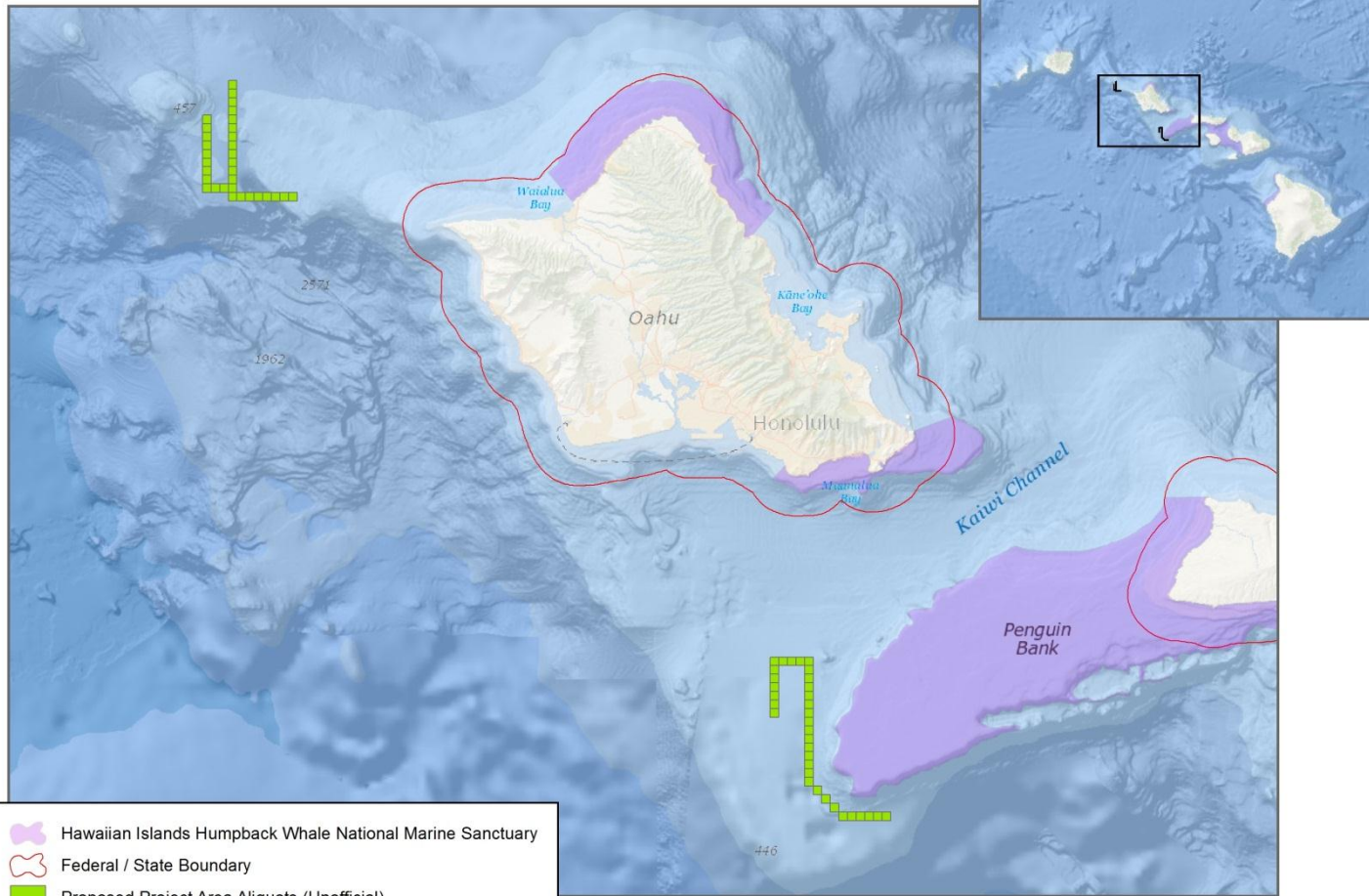
- Northwest: Kahe Power Plant, Barbers Point Industrial area, Wahiawa Substation
- South: Kahe Power Plant, Barbers Point Industrial area, Waiau Power Plant, Honolulu Power Plant, Kailua area



AWH Proposed Project Phases

Phase	Description	Timeframe
1	Feasibility technology, market development and preparation	2005 – 2014
2	BOEM OCS Lease Acquisition	2015 – 2016
3	Project Development	2016 – 2018
4	Construction of manufacturing facilities and infrastructure	2018 – 2020
5	Construction of windfarm	2019 – 2027
6	Operation	2020 – 2070
7	Decommissioning or repowering	2070?

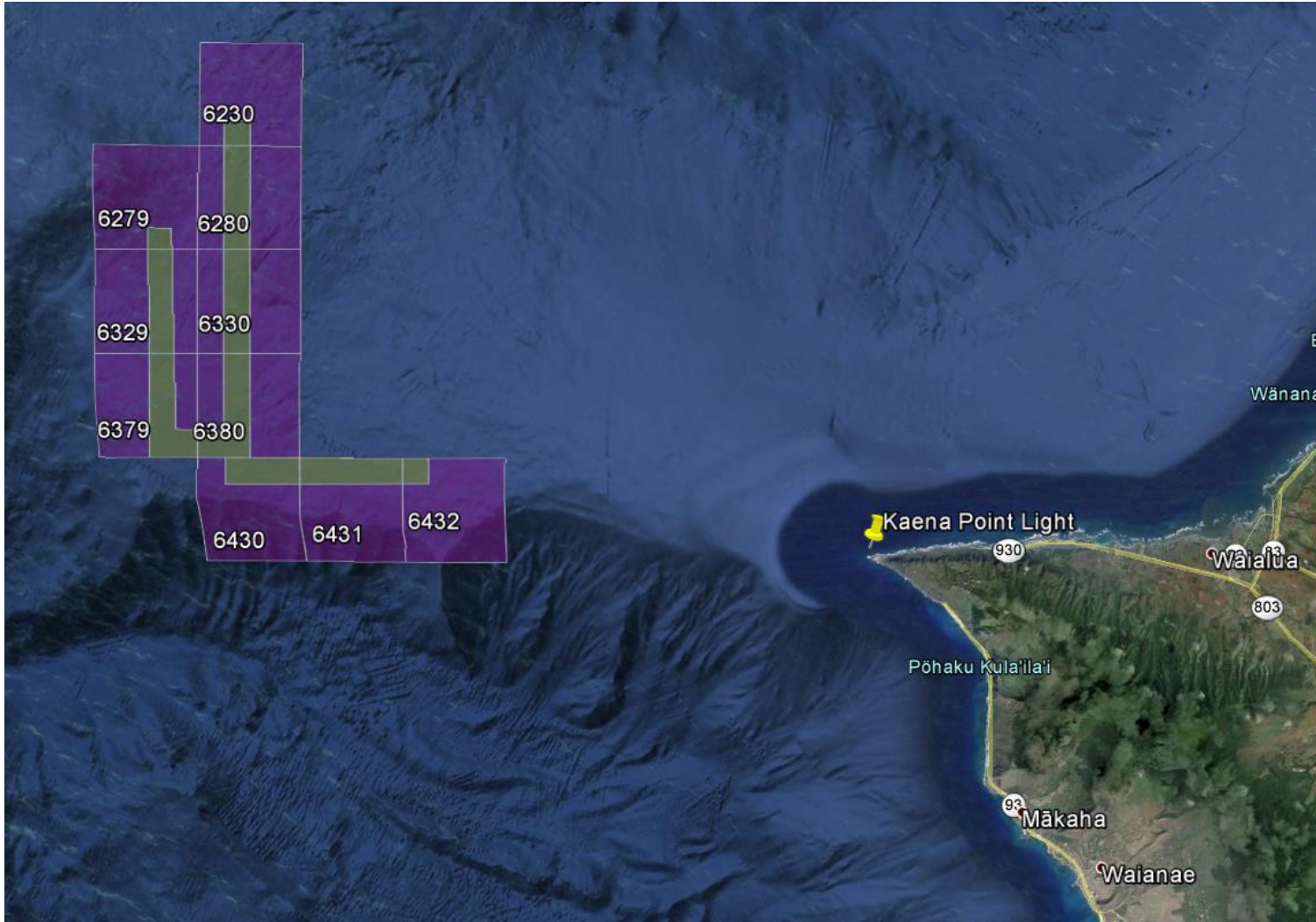




-  Hawaiian Islands Humpback Whale National Marine Sanctuary
-  Federal / State Boundary
-  Proposed Project Area Aliquots (Unofficial)

Coordinate System: WGS 84: UTM Zone 4N
 Service Layer Credits: Esri, DeLorme, GEBCO, NOAA NGDC, and other
 Document Path: H:\GIS\Maps\Hawaii\AWH Both Proposed (3-16-15).mxd



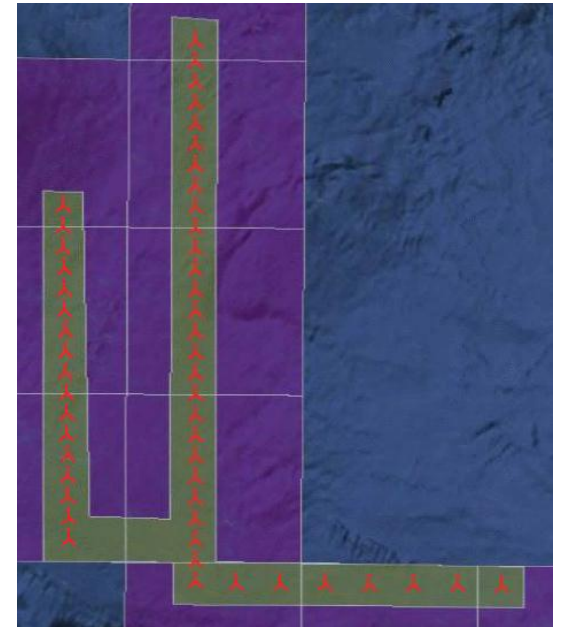


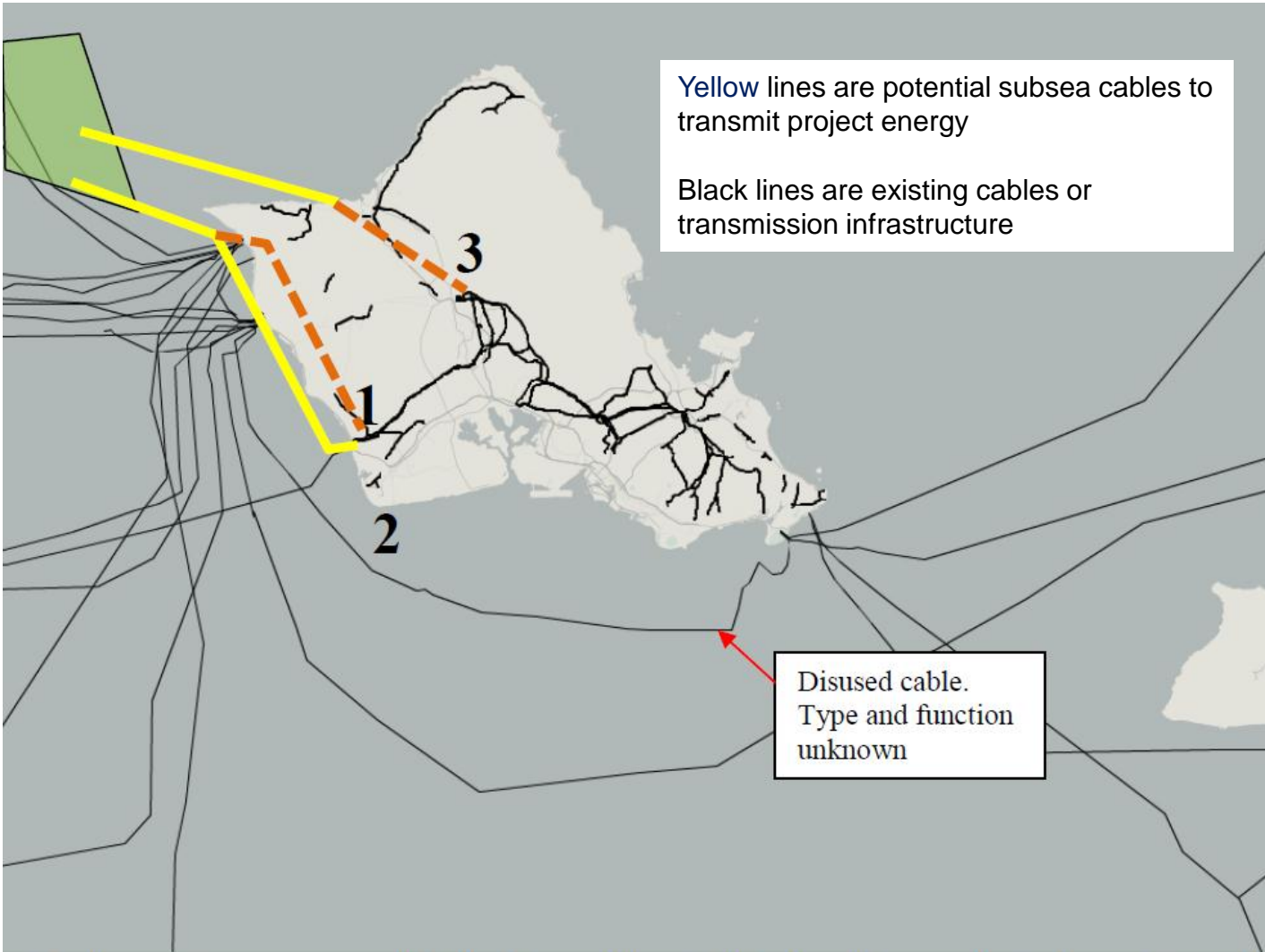
Proposed lease area is shaded in green.



The Oahu Northwest Project is proposed to be located approximately 12 miles northwest of Kaena Point

- Water depth ~ 700 – 1,000 m (2,296 – 3,280 ft)
- Proposed lease area is 11,387 acres (4,608 hectares)
- Project widest point: 8.2 nmi
- Project longest point: 10.5 nmi





Grid connection options: 1. Kahe Power Plant, 2. Barbers Point industrial area (several options), 3. Waihawa Substation.



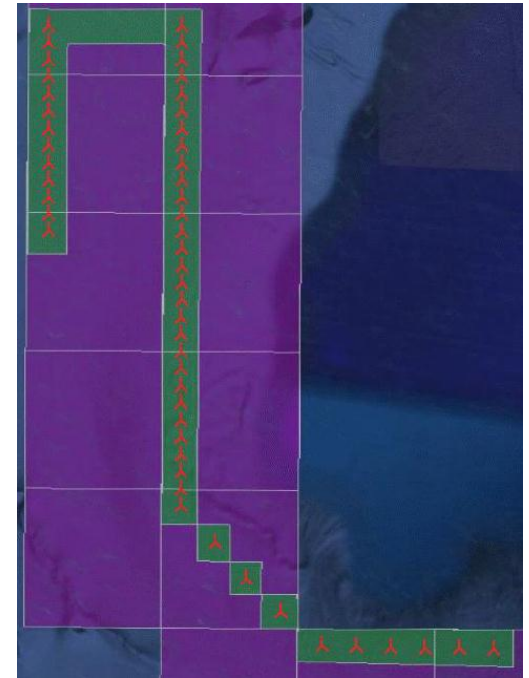


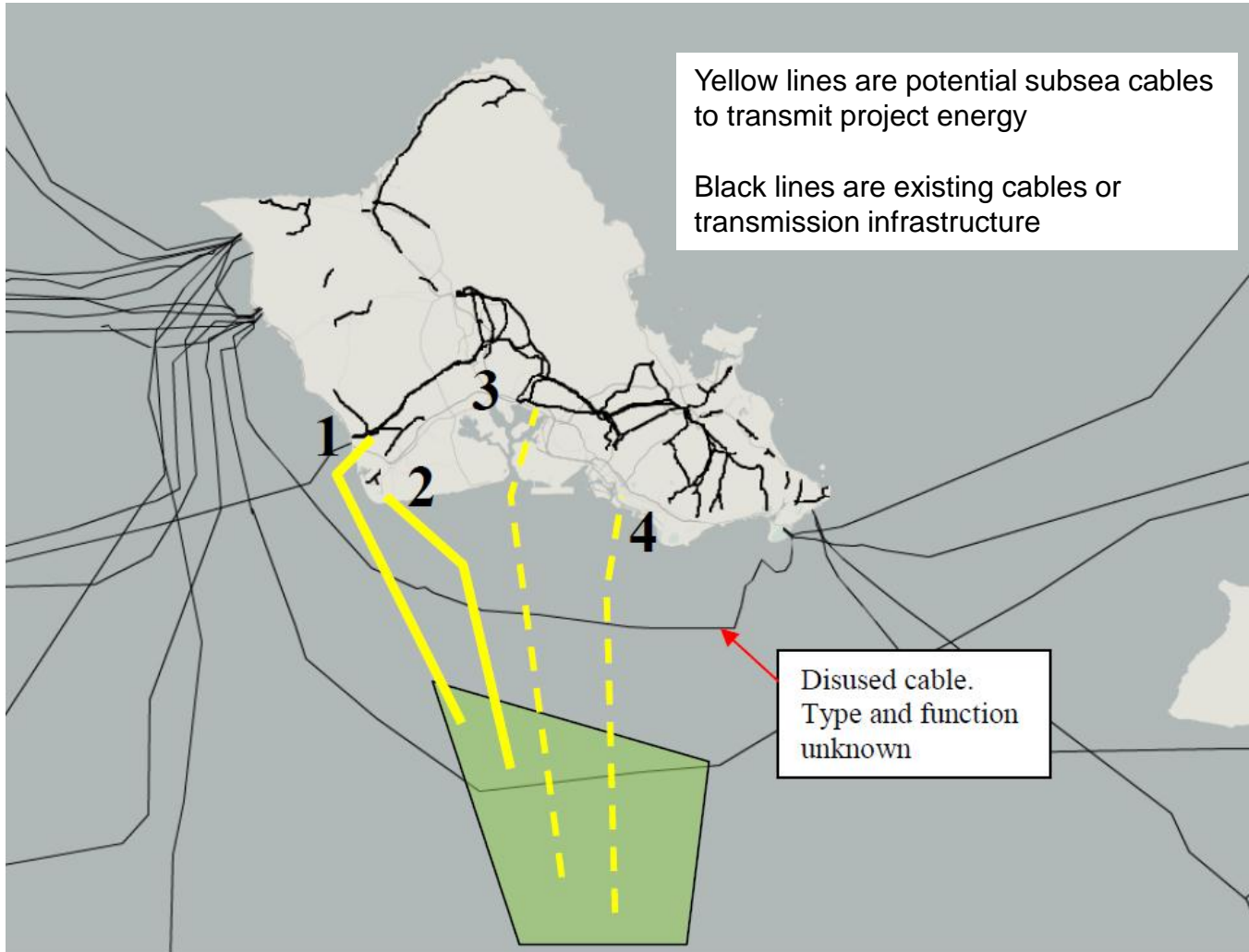
Proposed lease area is shaded in green.



The Oahu South Project is proposed to be located approximately 17 miles south of Diamond Head

- Water depth ~ 300-700 m (984-2,296 ft)
- Proposed lease area is 12,099 acres (4,896 hectares)
- Project widest point: 10.5 nmi
- Project longest point: 14.25 nmi





Grid connection options: 1. Kahe Power Plant, 2. Barbers Point industrial area (several options), 3. Waiiau Power Plant (questionable due to possible military restrictions), 4. Honolulu Power Plant,





Questions?

*Up Next: Overview of
BOEM's Leasing Process*

Tracy Logan

Renewable Energy Specialist / Hawaii Task Force Coordinator
Office of Strategic Resources
Bureau of Ocean Energy Management
Pacific OCS Region
805-384-6315

Tracy.Logan@boem.gov

