

# National Historic Preservation Act: Section 106

## What is Section 106 of the National Historic Preservation Act?

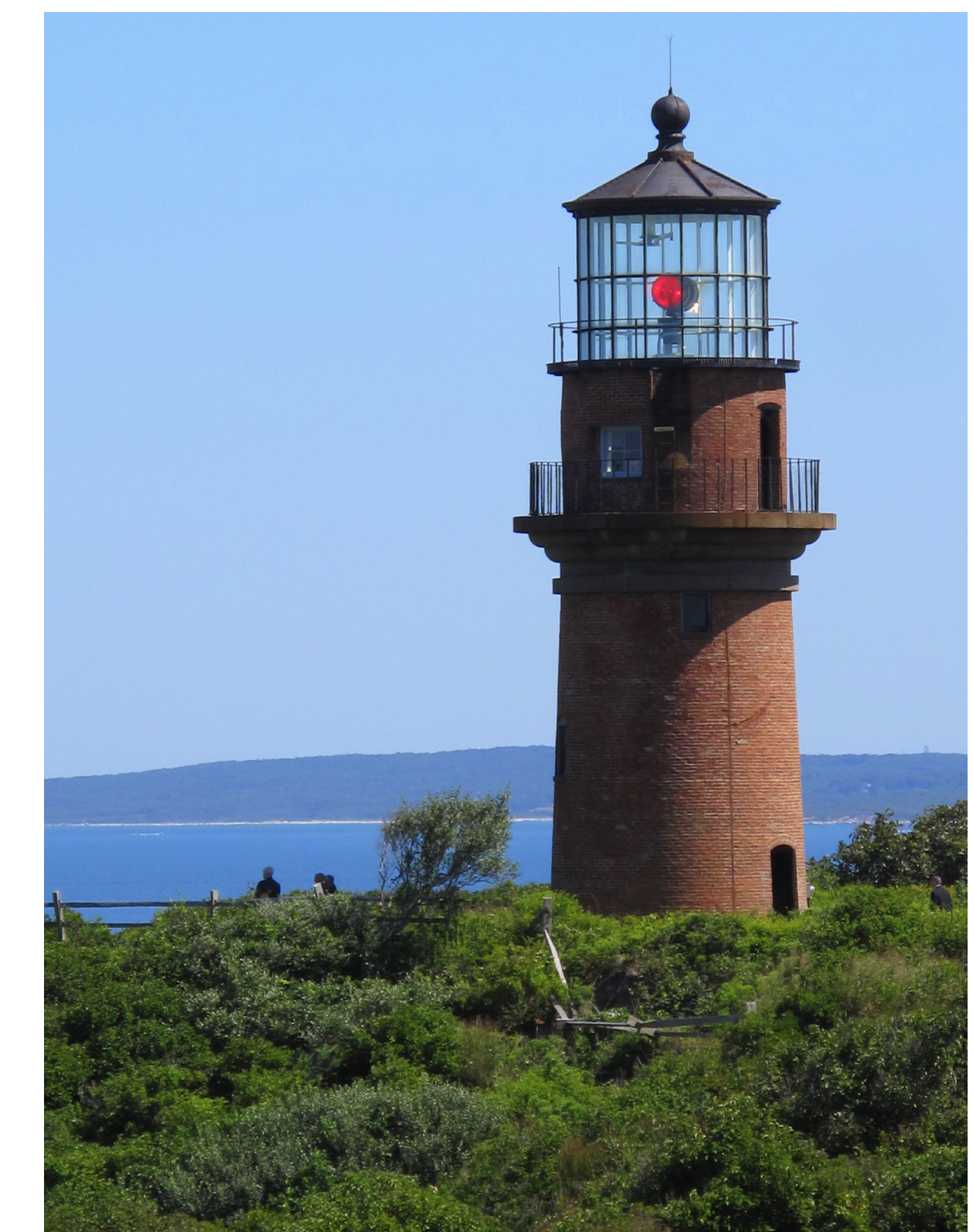
It is a regulation that requires Federal agencies to consider effects of undertakings on historic properties.

### What will it do?

- Establish Area of Potential Effect (APE).
- Identify Historic Properties.
- Assess project effects on historic properties.
- Resolve adverse effects (avoid, minimize, or mitigate).

## What are the National Register Criteria?

- Associated with significant historical events.
- Associated with the lives of persons significant in our past. Embody distinctive style, period, method of construction, or represent work of a master or possess high artistic values, or represent a district with components that may lack individual distinction.
- Properties that have yielded or may be likely to yield, information important in history or prehistory.



## Request for Public Input

BOEM seeks comment and input regarding the identification of historic properties and/or potential effects to historic properties from activities associated with approval of the Project, as well as reasonable alternatives (e.g., size, geographic, or other restrictions on construction and siting of facilities and activities) and potential mitigation measures to be analyzed in the EIS, as well as provide additional information. Mitigation measures may include ways to avoid, minimize, or otherwise treat and resolve adverse effects on historic properties.



For more information, please visit:

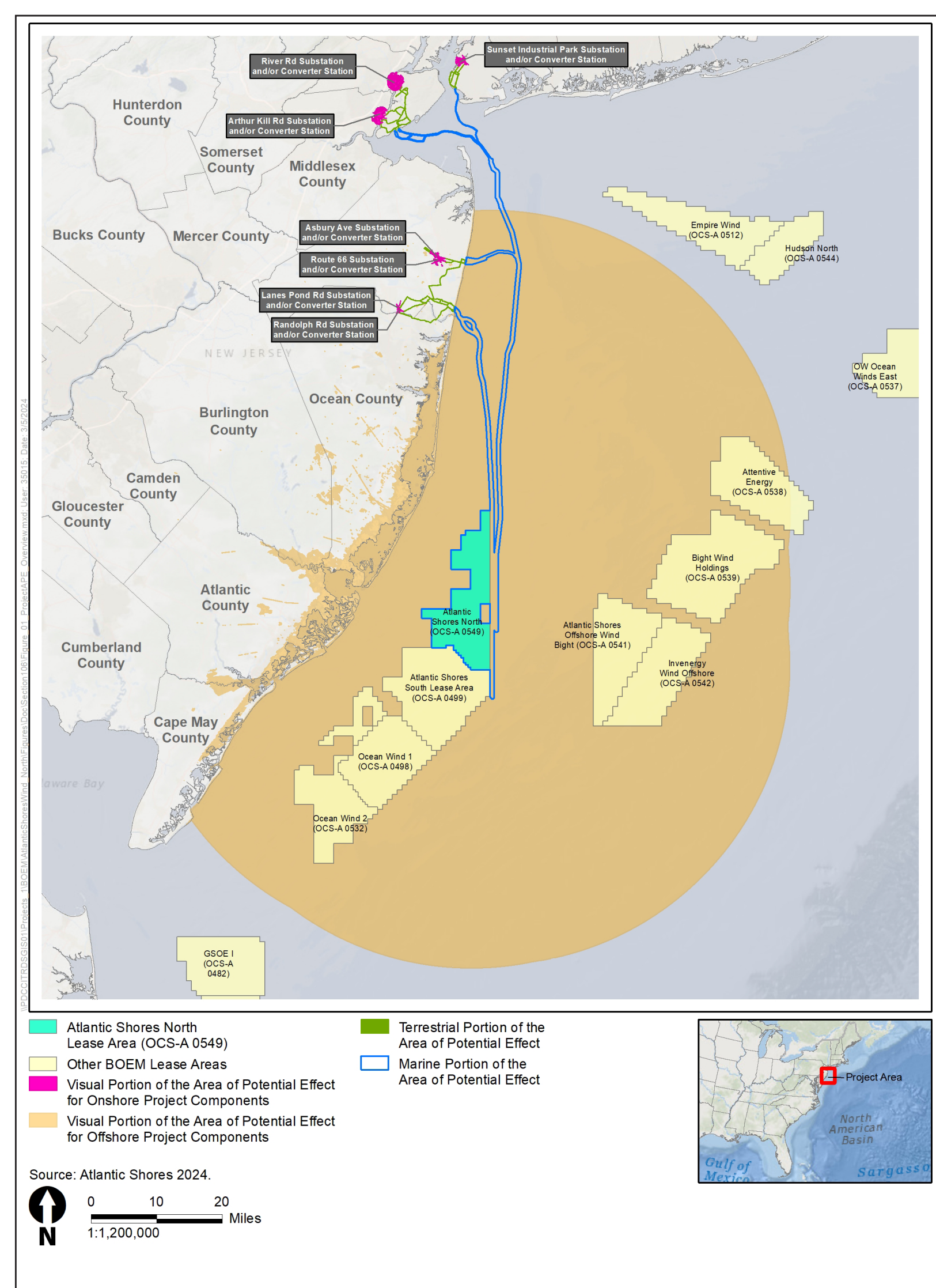
<https://www.boem.gov/renewable-energy/state-activities/new-jersey/atlantic-shores-north-ocs-0549>

# What is the Area of Potential Effects (APE) for the Atlantic Shores North Project?

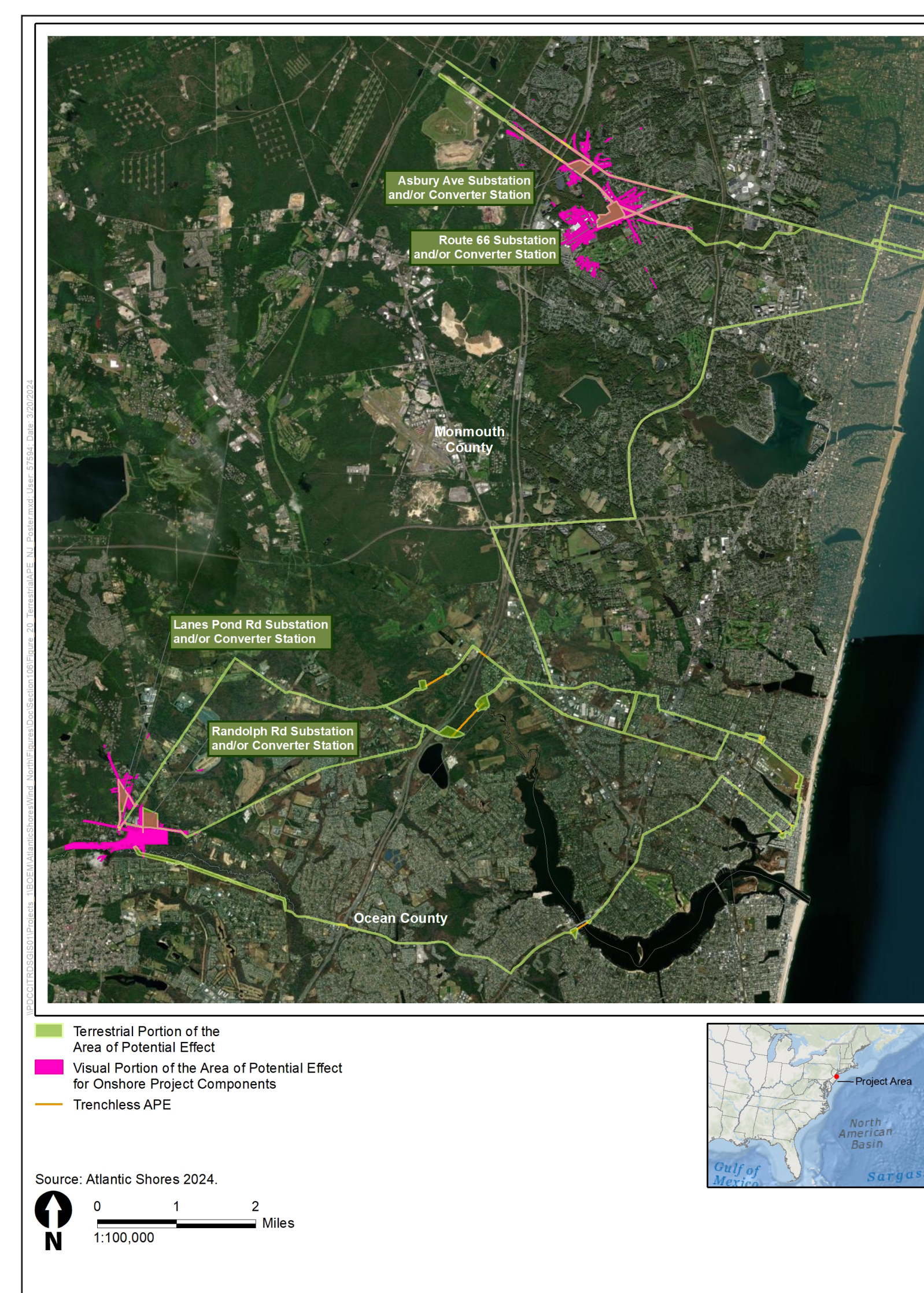
BOEM needs your input: do you know of historic properties (Buildings, Structures, Objects, Archaeological Sites, Districts, Landscapes, Traditional Cultural Properties) that may be affected by this project?

This project has three categories of APE:

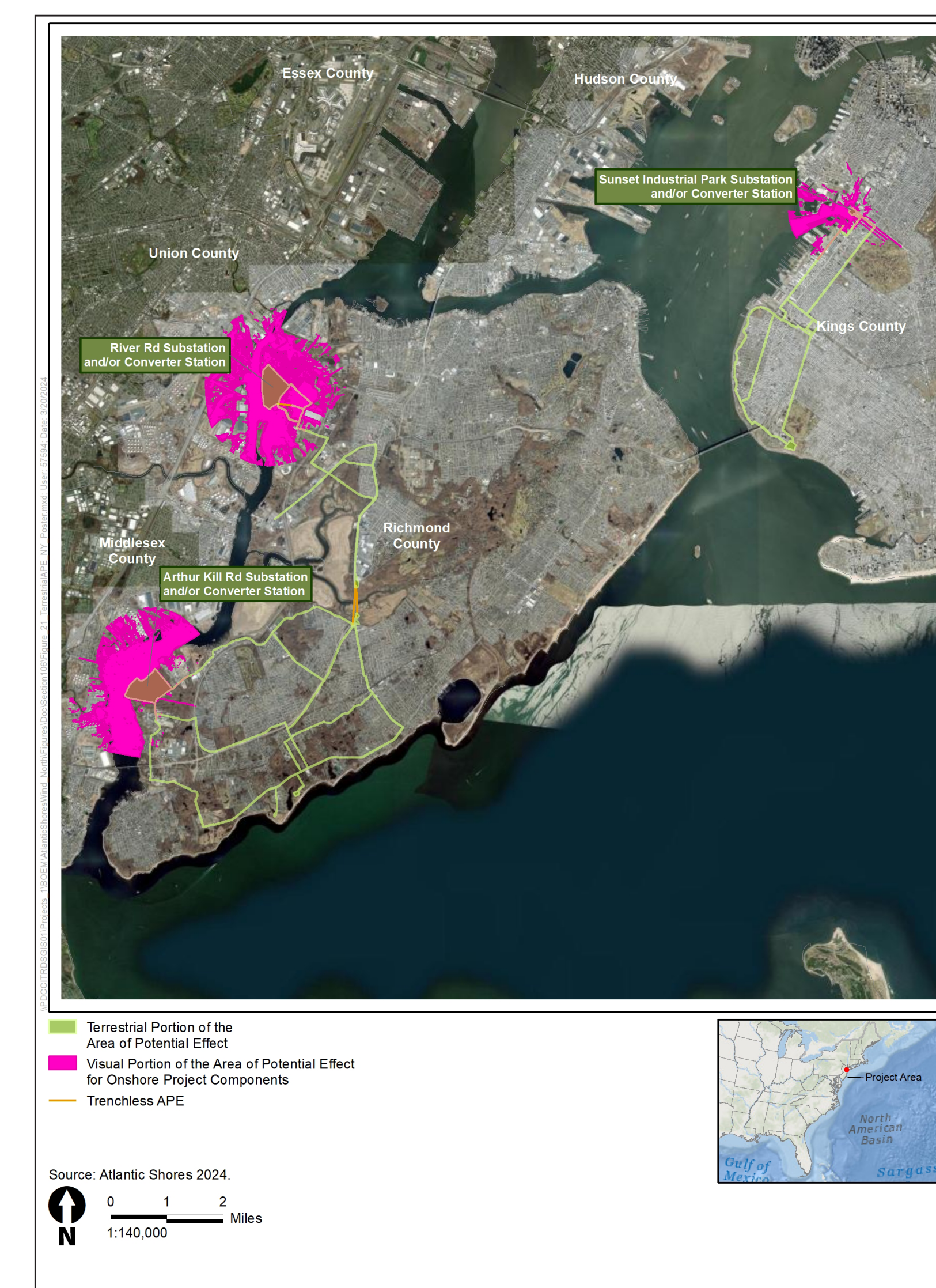
- 1. Terrestrial:** The depth and breadth of terrestrial areas potentially impacted by any ground disturbing activities
- 2. Marine:** The depth and breadth of seabed potentially impacted by any bottom-disturbing activities
- 3. Visual:** The viewshed from which renewable energy structures, whether located offshore or onshore, would be visible



Preliminary Area of Potential Effects (PAPE) Overview



Terrestrial PAPE (New Jersey)



Terrestrial PAPE (New York)



For more information, please visit:

<https://www.boem.gov/renewable-energy/state-activities/new-jersey/atlantic-shores-north-ocs-0549>