

OCS Composite Block Diagram

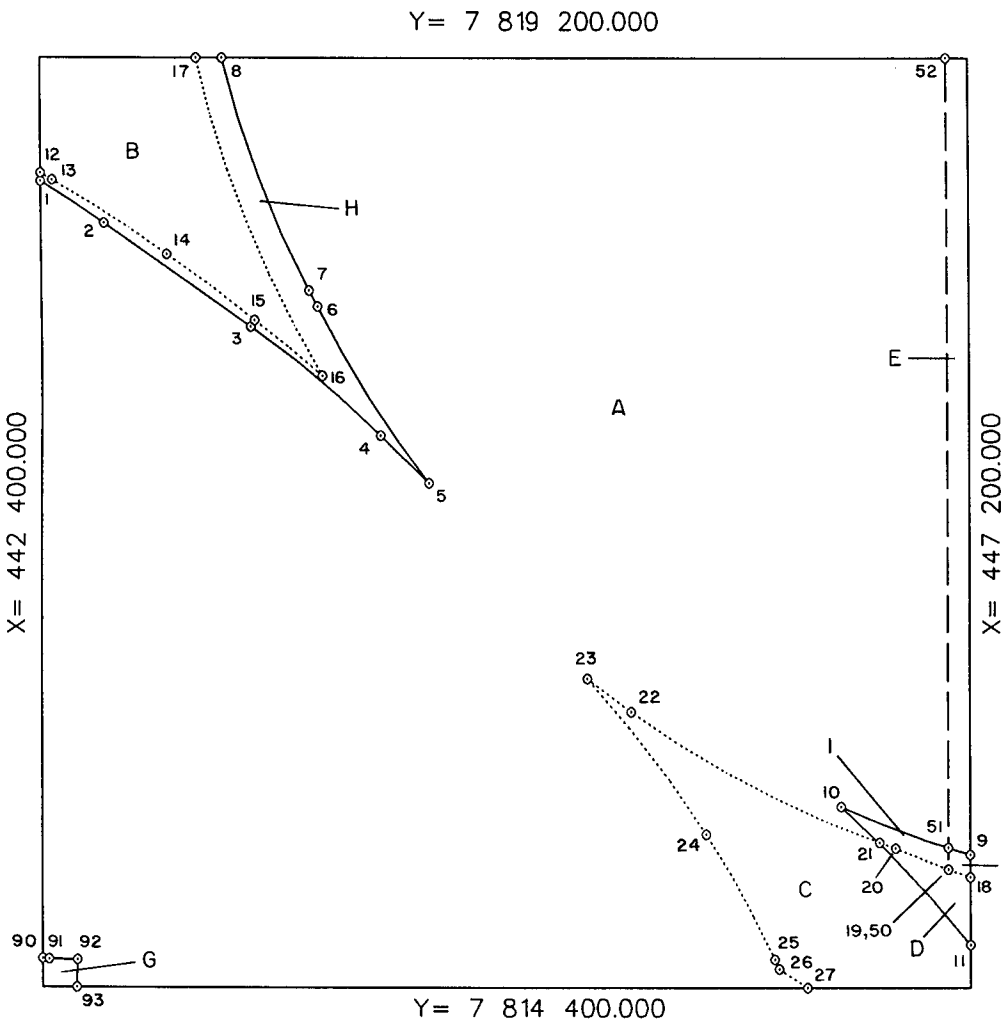
OCS Planning Area Name Beaufort Sea
Leasing Map / OPD Name Beechey Point

☒ State Seaward Boundary Radius 5556.000
☐ Limit of '8(g) Zone' Radius

☐ Feet
☒ Meters

Leasing Map/
OPD Number NR06-03
Block Number 6613
Datum NAD 83/WGS 84

Previous CBD
Signature Date 24-APR-96



State Area
A = 2008.433921ha @
C = 99.793789ha #
E = 46.097327ha
G = 2.596013ha

Federal 8(g) Area
B = 95.276354ha
D = 7.613034ha #
F = 1.316685ha
H = 38.130608ha @
I = 4.742269ha @

Boundary Disputed

Federal Non-8(g) Area

8(g) Disputed

Total Area 2304.000000ha

Offshore Intersections		
	X	Y
1	442 400.000	7 818 567.869
2	442 727.280	7 818 350.993
3	443 479.125	7 817 813.601
4	444 142.981	7 817 255.951
5	444 393.034	7 817 010.175
6	443 821.560	7 817 915.347
7	443 778.923	7 817 999.982
8	443 338.995	7 819 200.000
9	447 200.000	7 815 089.468
10	446 531.677	7 815 335.817
11	447 200.000	7 814 622.021
12	442 400.000	7 818 612.606
13	442 458.285	7 818 575.215
14	443 050.029	7 818 188.125
15	443 497.926	7 817 847.780
16	443 843.528	7 817 561.373
17	443 206.883	7 819 200.000
18	447 200.000	7 814 969.889

Contributing Baseline Points		
	X	Y
1-2	439 496.488	7 813 830.913
* 2-3	439 496.488	7 813 830.913
3-4	440 248.333	7 813 293.521
* 4-5	440 248.333	7 813 293.521
5-6	448 783.482	7 820 415.040
* 6-7	448 783.482	7 820 415.040
7-8	448 740.845	7 820 499.675
9-10	448 783.482	7 820 415.040
10-11	442 825.825	7 811 196.276
12-13	439 410.765	7 813 929.273
13-14	439 718.596	7 813 741.357
14-15	439 916.492	7 813 599.760
15-16	440 128.220	7 813 429.931
16-17	448 638.635	7 820 368.422
18-19	449 027.354	7 820 216.785

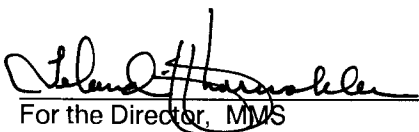
= Federal Leased Area @ = State Leased Area *Tangent Segment

Continued on next page . . .

OCS Composite Block Diagram

OCS Planning Area Name	Beaufort Sea	Leasing Map/ OPD Number	NR06-03
Leasing Map / OPD Name	Beechey Point	Block Number	6613

Offshore Intersections			Contributing Baseline Points		
	X	Y		X	Y
19	447 087.353	7 815 010.091	19-20	449 027.354	7 820 216.785
20	446 813.956	7 815 120.298	20-21	448 638.635	7 820 368.422
21	446 729.434	7 815 150.447	21-22	448 638.635	7 820 368.422
22	445 440.736	7 815 825.012	22-23	448 638.635	7 820 368.422
23	445 211.409	7 815 995.003	23-24	441 143.440	7 812 210.316
24	445 830.254	7 815 194.090	24-25	441 143.440	7 812 210.316
25	446 184.201	7 814 547.528	25-26	441 143.440	7 812 210.316
26	446 208.061	7 814 495.367	26-27	443 268.778	7 809 780.082
27	446 355.118	7 814 400.000			
50	447 087.353	7 815 010.091			
51	447 087.355	7 815 124.266			
52	447 087.415	7 819 200.000			
90	442 400.000	7 814 548.261			
91	442 433.220	7 814 547.412			
92	442 579.531	7 814 543.676			
93	442 576.111	7 814 400.000			



10/09/97
Date

For the Director, MMS

For the State

Date