

September 2016

Bureau of Ocean Energy Management

Commercial Leasing for Wind Power on the Outer Continental Shelf (OCS) Offshore the Island of Oahu, Hawaii—Call for Information and Nominations Docket No. BOEM -2016-0036.

In response to Bureau of Ocean Energy Management (BOEM) *Commercial Leasing for Wind Power on the Outer Continental Shelf (OCS) Offshore Hawaii –Call for Information and Nominations (Call)* [Docket No. BOEM-2016-0036], published June 24, 2016, BOEM received one new indication of interest and an expansion of a previously submitted area wishing to obtain a commercial lease for wind energy project. The parties and the OCS blocks nominated for development are provided below. BOEM reviewed these parties' submissions to assess filing completeness and has determined the parties are legally, technically, and financially qualified to hold an OCS renewable energy commercial lease.

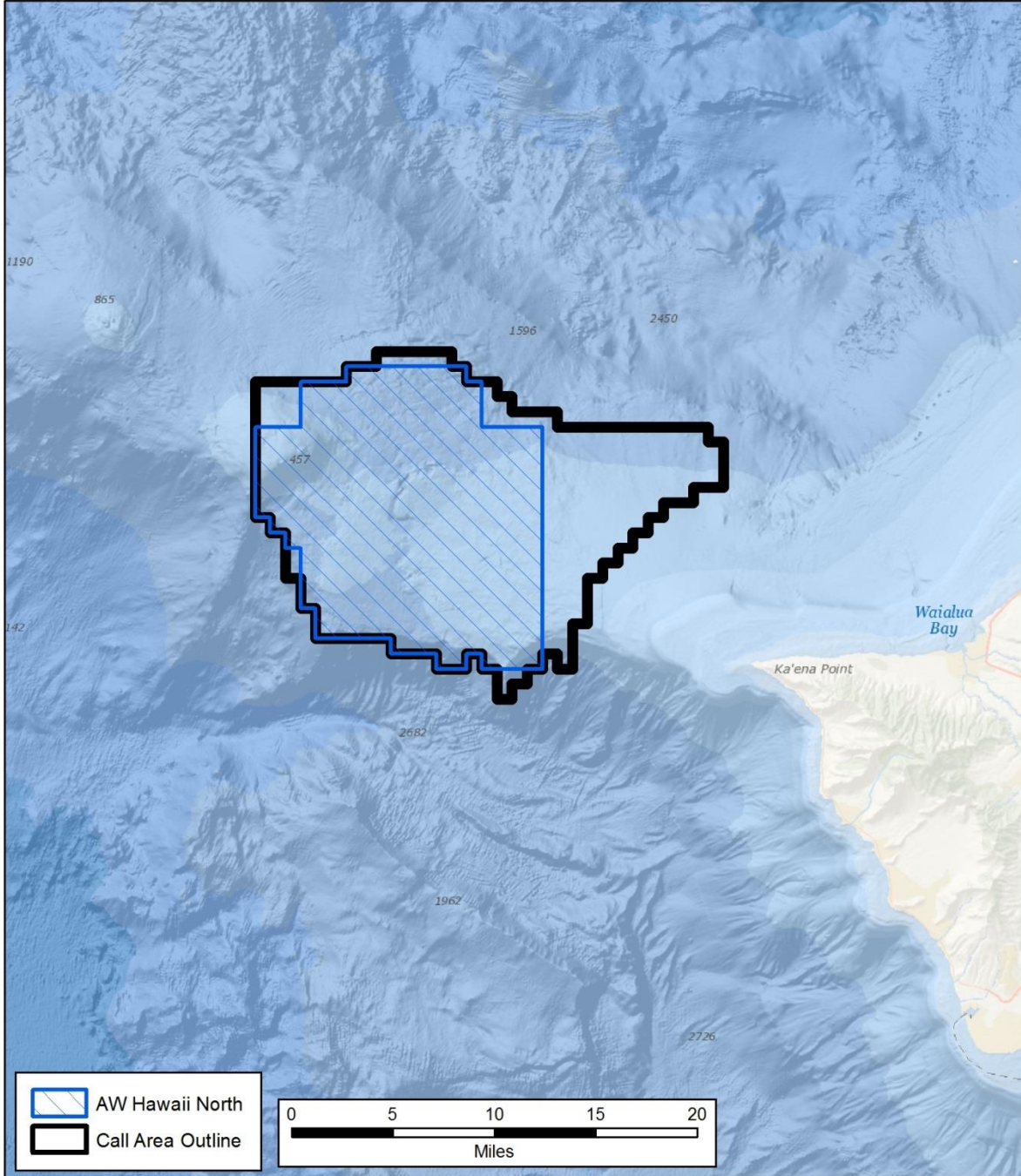
In response to the Call, AW Hawaii Wind, LLC (AW Hawaii) expanded on the areas of commercial interest submitted in their January 22, 2015, unsolicited lease requests (Oahu North and Oahu South), by nominating whole OCS lease blocks that were, in part, outside the Oahu Call Area. Because AW Hawaii nominated whole OCS lease blocks that were partially within and partially outside the Call Area, and BOEM is only considering areas nominated within the Oahu Call Area, those areas nominated outside the Call Area have been removed by BOEM in the maps below. Progression Hawaii Offshore Wind, Inc. (Progression) maintained its area of interest as submitted in their October 8, 2015, unsolicited lease request. Statoil Wind US, LLC (Statoil) nominated the entire Oahu Call Area in response to the Call. The following maps depict the areas of commercial interest nominated by each party.

AW Hawaii Oahu North Revised Nomination



Bureau of Ocean Energy Management
Pacific Outer Continental Shelf (OCS) Region

Oahu Call Area



↑
N

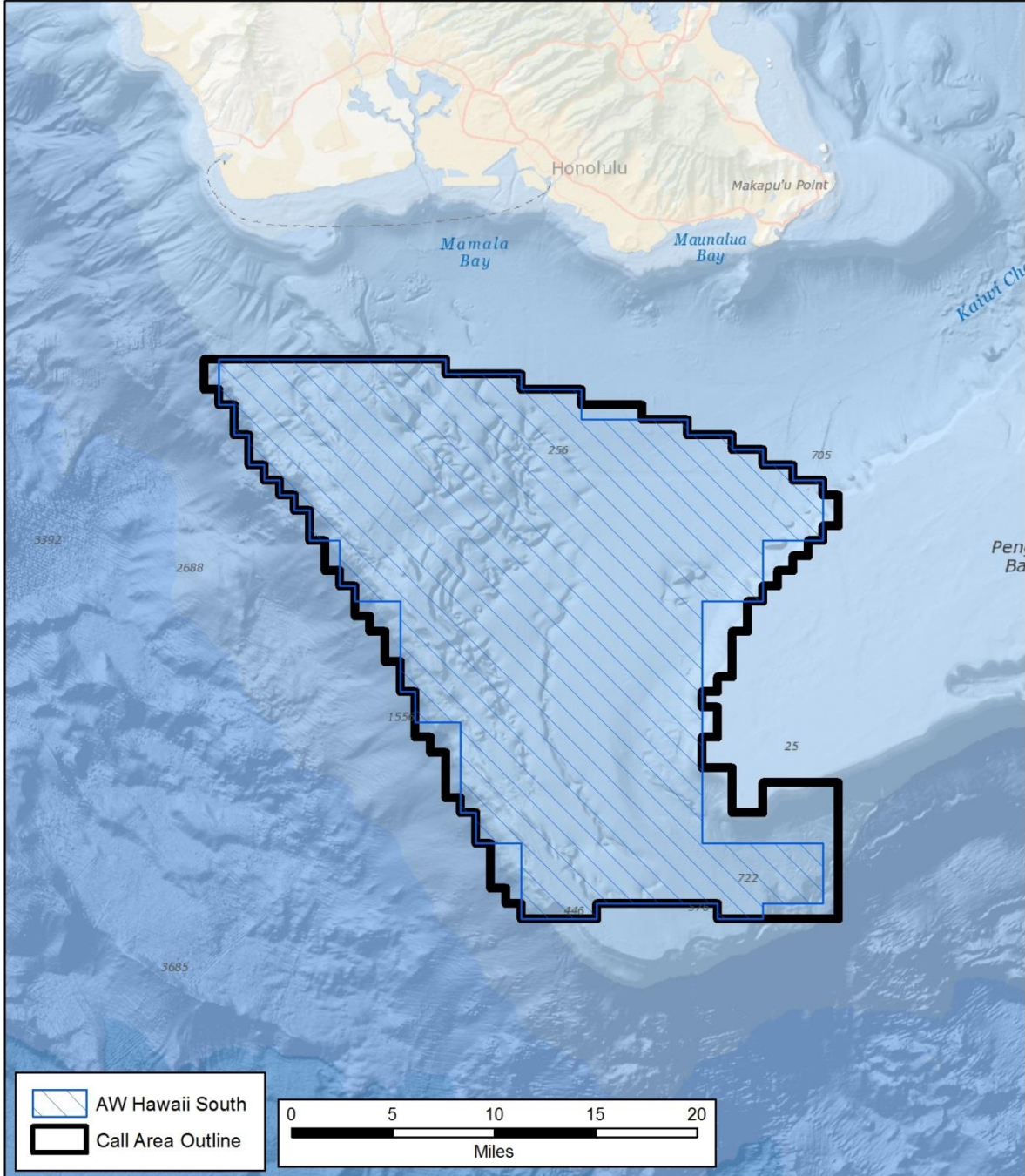
Protraction Name	Protraction No.	Block No.
Kauai Channel	NF04-08	6229
Kauai Channel	NF04-08	6230
Kauai Channel	NF04-08	6231
Kauai Channel	NF04-08	6278
Kauai Channel	NF04-08	6279
Kauai Channel	NF04-08	6280
Kauai Channel	NF04-08	6281
Kauai Channel	NF04-08	6282
Kauai Channel	NF04-08	6328
Kauai Channel	NF04-08	6329
Kauai Channel	NF04-08	6330
Kauai Channel	NF04-08	6331
Kauai Channel	NF04-08	6332
Kauai Channel	NF04-08	6379
Kauai Channel	NF04-08	6380
Kauai Channel	NF04-08	6381
Kauai Channel	NF04-08	6382
Kauai Channel	NF04-08	6429
Kauai Channel	NF04-08	6430
Kauai Channel	NF04-08	6431
Kauai Channel	NF04-08	6432

AW Hawaii Oahu South Revised Nomination



Bureau of Ocean Energy Management
Pacific Outer Continental Shelf (OCS) Region

Oahu Call Area



↑
N

Protraction Name	Protraction No.	Block No.
Kauai Channel	NF04-08	6940
Kauai Channel	NF04-08	6990
Oahu	NF04-09	6901
Oahu	NF04-09	6902
Oahu	NF04-09	6903
Oahu	NF04-09	6904
Oahu	NF04-09	6905
Oahu	NF04-09	6951
Oahu	NF04-09	6952
Oahu	NF04-09	6953
Oahu	NF04-09	6954
Oahu	NF04-09	6955
Oahu	NF04-09	6956
Oahu	NF04-09	6957
Oahu	NF04-09	6958
Oahu	NF04-09	6959
Oahu	NF04-09	7001
Oahu	NF04-09	7002
Oahu	NF04-09	7003
Oahu	NF04-09	7004
Oahu	NF04-09	7005
Oahu	NF04-09	7006
Oahu	NF04-09	7007
Oahu	NF04-09	7008
Oahu	NF04-09	7009
Oahu	NF04-09	7052
Oahu	NF04-09	7053
Oahu	NF04-09	7054
Oahu	NF04-09	7055
Oahu	NF04-09	7056
Oahu	NF04-09	7057
Oahu	NF04-09	7058
Oahu	NF04-09	7103
Oahu	NF04-09	7104
Oahu	NF04-09	7105
Oahu	NF04-09	7106
Oahu	NF04-09	7107
Maui	NF04-12	6003
Maui	NF04-12	6004
Maui	NF04-12	6005
Maui	NF04-12	6006
Maui	NF04-12	6007
Maui	NF04-12	6054
Maui	NF04-12	6055

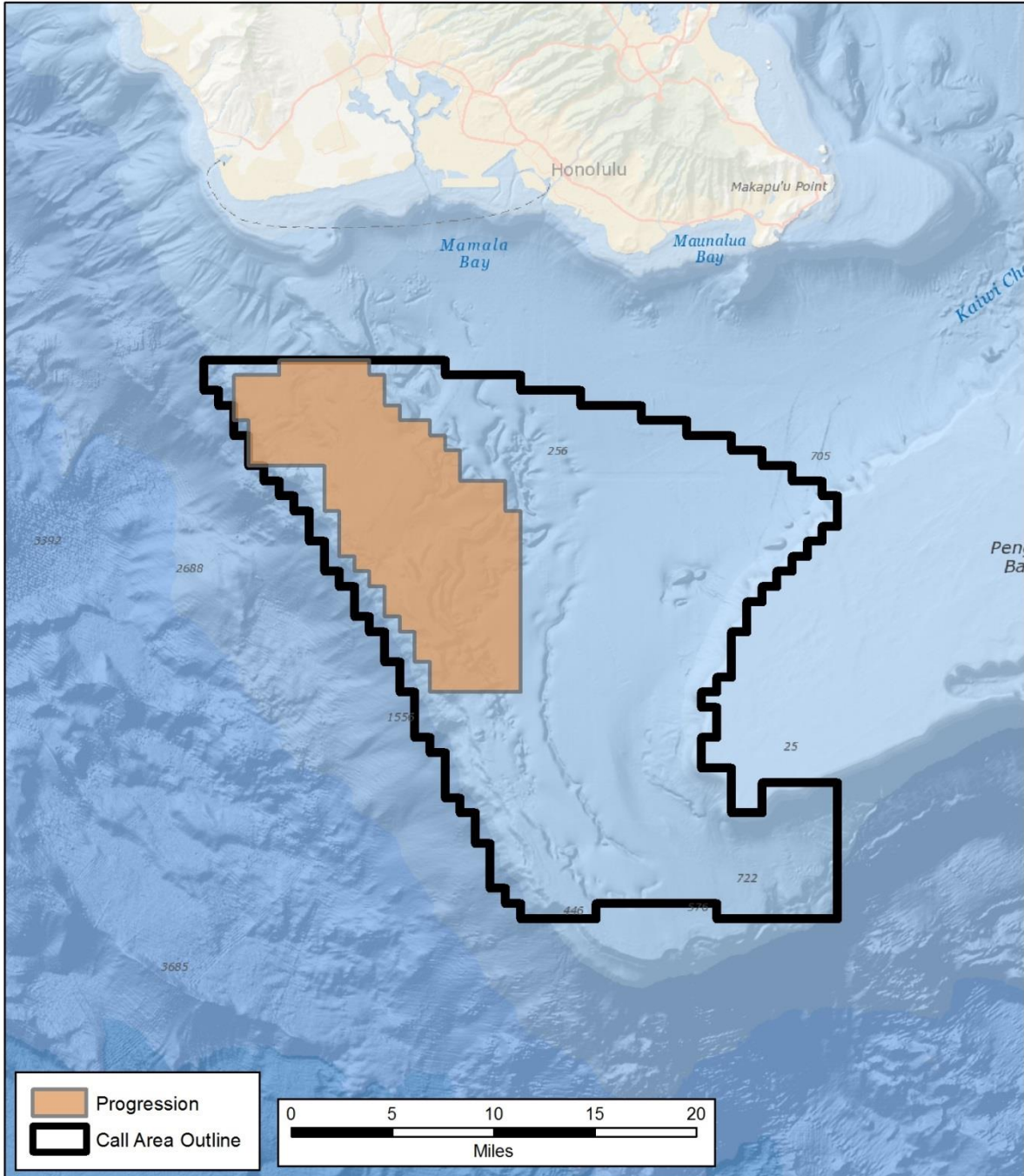
Maui	NF04-12	6056
Maui	NF04-12	6057
Maui	NF04-12	6104
Maui	NF04-12	6105
Maui	NF04-12	6106
Maui	NF04-12	6107
Maui	NF04-12	6155
Maui	NF04-12	6156
Maui	NF04-12	6157
Maui	NF04-12	6158
Maui	NF04-12	6159
Maui	NF04-12	6205
Maui	NF04-12	6206
Maui	NF04-12	6207
Maui	NF04-12	6208

Progression Oahu South Nomination



Bureau of Ocean Energy Management
Pacific Outer Continental Shelf (OCS) Region

Oahu Call Area



N

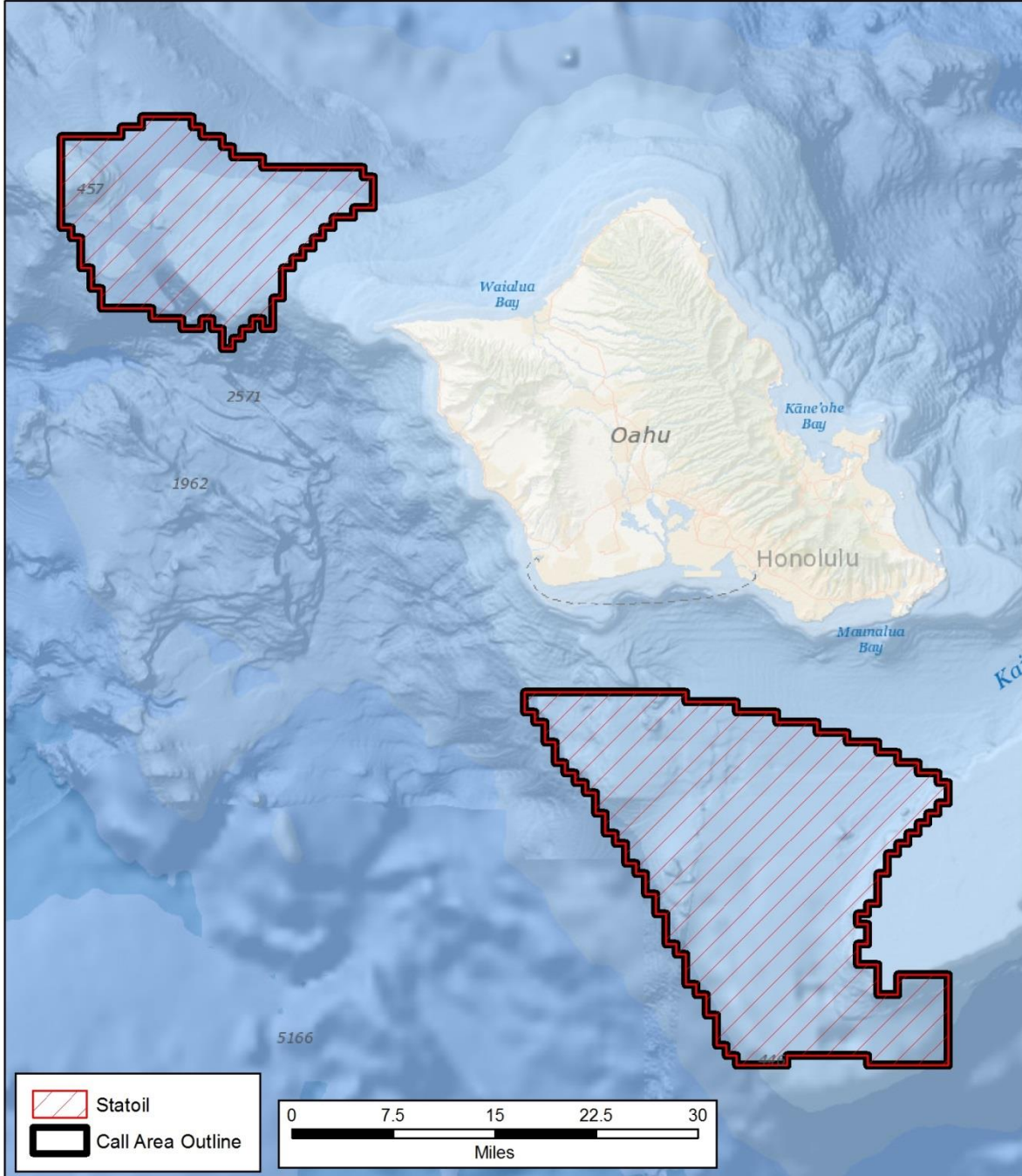
Protraction name	Protraction No.	Block No.
Kauai Channel	NF04-08	6940
Kauai Channel	NF04-08	6990
Oahu	NF04-09	6901
Oahu	NF04-09	6902
Oahu	NF04-09	6903
Oahu	NF04-09	6951
Oahu	NF04-09	6952
Oahu	NF04-09	6953
Oahu	NF04-09	6954
Oahu	NF04-09	7001
Oahu	NF04-09	7002
Oahu	NF04-09	7003
Oahu	NF04-09	7004
Oahu	NF04-09	7052
Oahu	NF04-09	7053
Oahu	NF04-09	7054
Oahu	NF04-09	7103
Oahu	NF04-09	7104
Maui	NF04-12	6003
Maui	NF04-12	6004

Statoil Oahu Call Area Nomination



Bureau of Ocean Energy Management
Pacific Outer Continental Shelf (OCS) Region

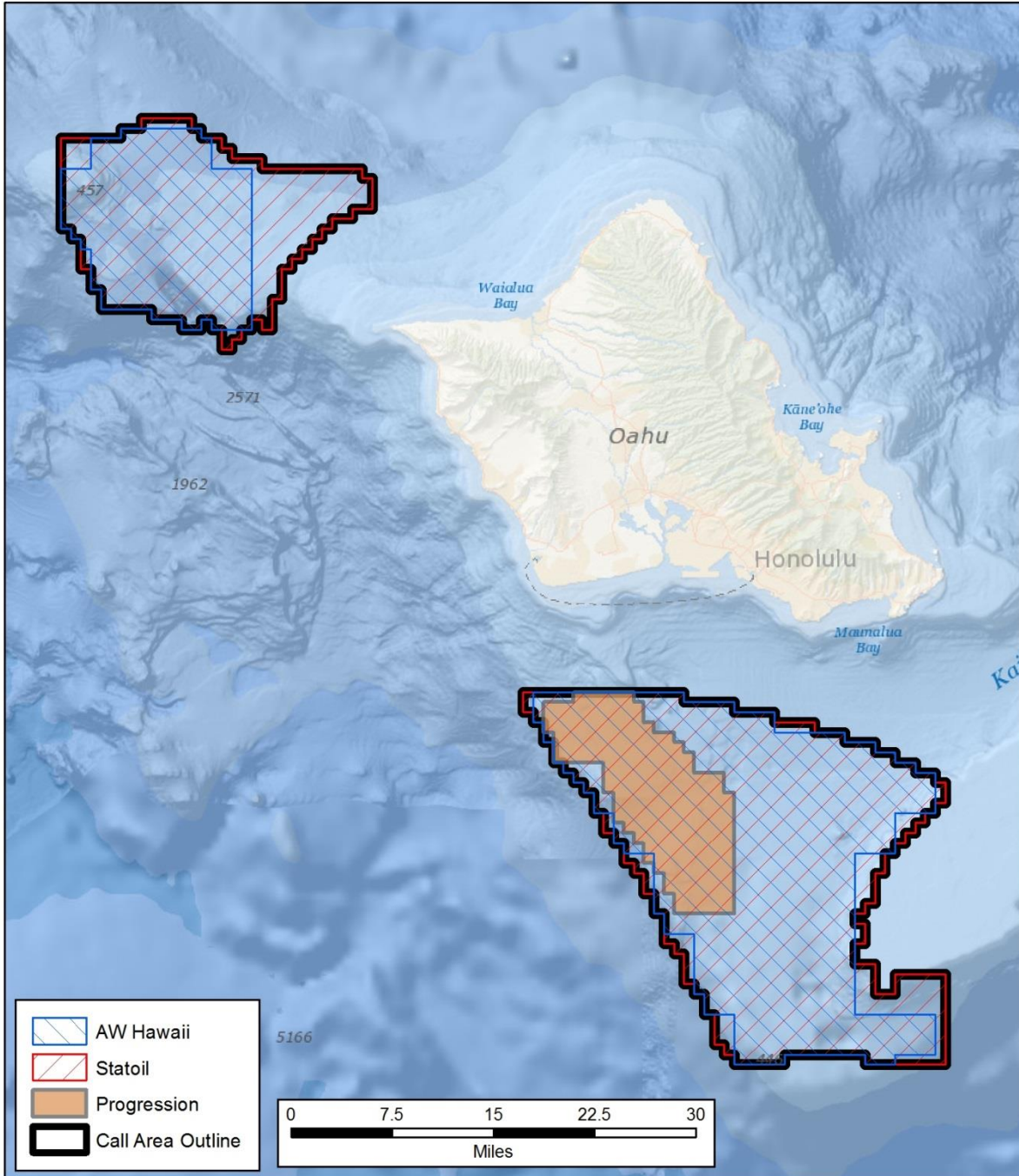
Oahu Call Area



Protraction name	Protraction No.	Block No.
Kauai Channel	NF04-08	6939
Kauai Channel	NF04-08	6940
Kauai Channel	NF04-08	6990
Oahu	NF04-09	6901
Oahu	NF04-09	6902
Oahu	NF04-09	6903
Oahu	NF04-09	6904
Oahu	NF04-09	6905
Oahu	NF04-09	6906
Oahu	NF04-09	6951
Oahu	NF04-09	6952
Oahu	NF04-09	6953
Oahu	NF04-09	6954
Oahu	NF04-09	6955
Oahu	NF04-09	6956
Oahu	NF04-09	6957
Oahu	NF04-09	6958
Oahu	NF04-09	6959
Oahu	NF04-09	7001
Oahu	NF04-09	7002
Oahu	NF04-09	7003
Oahu	NF04-09	7004
Oahu	NF04-09	7005
Oahu	NF04-09	7006
Oahu	NF04-09	7007
Oahu	NF04-09	7008
Oahu	NF04-09	7009
Oahu	NF04-09	7010
Oahu	NF04-09	7051
Oahu	NF04-09	7052
Oahu	NF04-09	7053
Oahu	NF04-09	7054
Oahu	NF04-09	7055
Oahu	NF04-09	7056
Oahu	NF04-09	7057
Oahu	NF04-09	7058
Oahu	NF04-09	7059
Oahu	NF04-09	7102
Oahu	NF04-09	7103
Oahu	NF04-09	7104

Oahu	NF04-09	7105
Oahu	NF04-09	7106
Oahu	NF04-09	7107
Oahu	NF04-09	7108
Maui	NF04-12	6003
Maui	NF04-12	6004
Maui	NF04-12	6005
Maui	NF04-12	6006
Maui	NF04-12	6007
Maui	NF04-12	6008
Maui	NF04-12	6053
Maui	NF04-12	6054
Maui	NF04-12	6055
Maui	NF04-12	6056
Maui	NF04-12	6057
Maui	NF04-12	6058
Maui	NF04-12	6103
Maui	NF04-12	6104
Maui	NF04-12	6105
Maui	NF04-12	6106
Maui	NF04-12	6107
Maui	NF04-12	6108
Maui	NF04-12	6109
Maui	NF04-12	6110
Maui	NF04-12	6154
Maui	NF04-12	6155
Maui	NF04-12	6156
Maui	NF04-12	6157
Maui	NF04-12	6158
Maui	NF04-12	6159
Maui	NF04-12	6160
Maui	NF04-12	6205
Maui	NF04-12	6206
Maui	NF04-12	6208
Maui	NF04-12	6209
Maui	NF04-12	6210

Combined Nominations



- end-