

KOP 28: Jones Beach State Park | Season: Winter | Time of Day: Late-Noon

Base Photographic Documentation

Date (MM/DD/YYYY):	4/02/2023
Time (24hr):	15:37
GPS Longitude:	-73.556652
GPS Latitude:	40.58008
Viewpoint Elevation (ft):	3
Camera Height (ft):	5.41
Camera Heading (°):	143
Camera Direction:	SE

Camera Information

Camera Make & Model:	Canon EOS 5DS R
Camera Sensor Size:	36mm x 24mm
Lens Make & Model:	Sigma F1.4 DG HSM A020
Lens Focal Length:	20mm
Field of View:	65.47° (H) / 46.397° (V)

Sun And Weather Information

Sun Azimuth:	231.99
Sun Elevation:	15.51
Lighting Angle (On Turbines):	Right Lit
Weather Conditions:	Fair
Maximum Visibility (NM):	28.01
Temperature (°F):	21
Temperature (°C):	-6.11
Humidity (%):	28

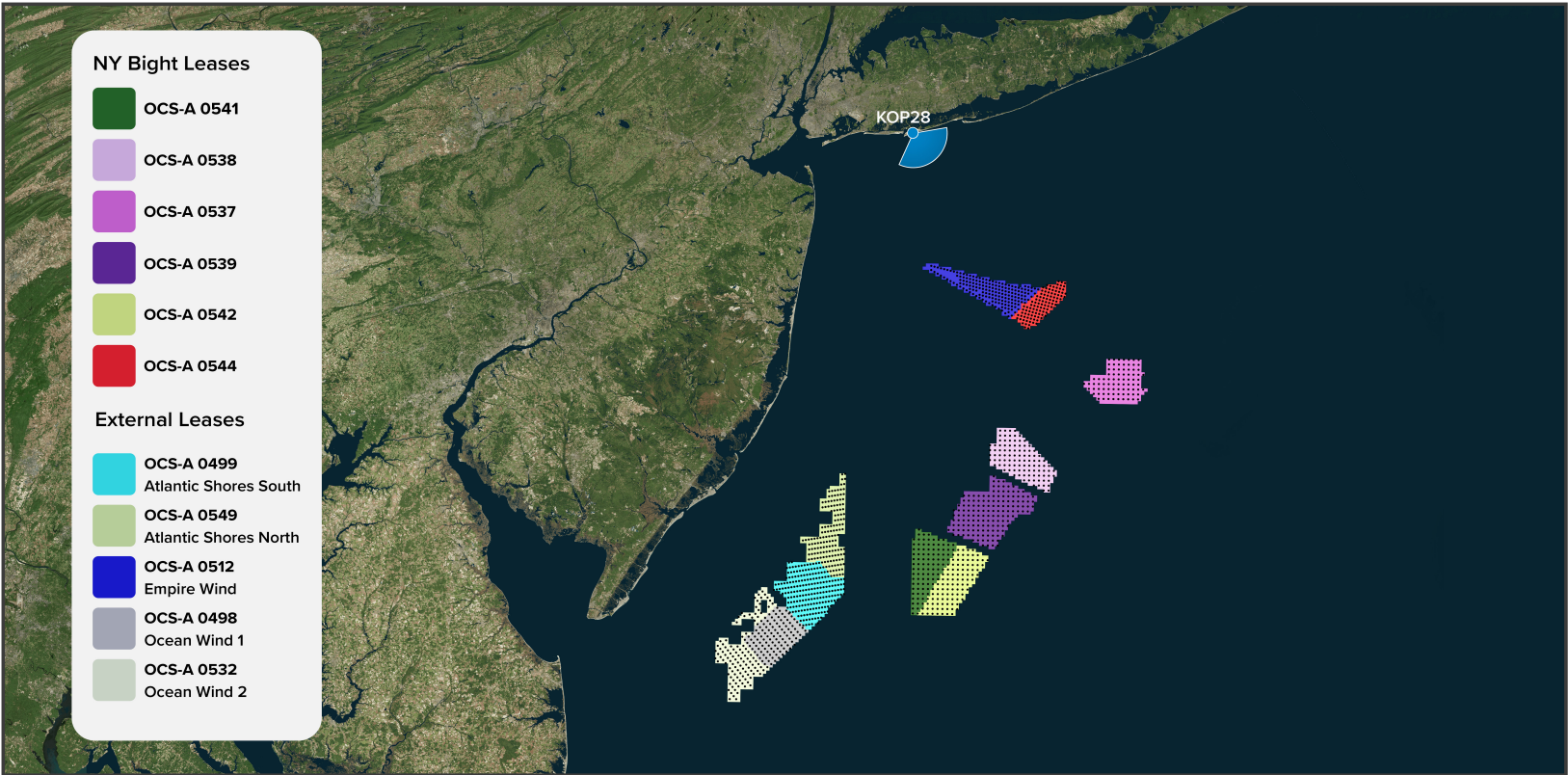
Viewing Instructions

11 x 17 inch Printed Display:	Distance is 19.7 inches (500mm)
On-Screen Display:	Distance is 19.7 inches (500mm)

Image Preview



Context Map



● Key Observation Point (KOP) ● Turbines



KOP 28: Jones Beach State Park | Season: Winter | Time of Day: Late-Noon

NY Bight Turbine Information - 1312ft (399.9m)

Lease Area	Distance to Nearest Turbine in Miles (km)	Turbines Visible		
		Blade Tip	Hub	Mid Tower
Total	-	110	88	0
OCS-A 0544	31.38 (50.51)	110	88	0
OCS-A 0537	54.52 (87.75)	0	0	0
OCS-A 0538	54.62 (87.91)	0	0	0
OCS-A 0539	64.74 (104.18)	0	0	0
OCS-A 0541	76.19 (122.62)	0	0	0
OCS-A 0542	80.17 (129.02)	0	0	0

Blade tip counts are a summation of only blade tips visible, only hubs visible, and mid-towers visible. Hub counts are a summation of only hubs visible and mid towers visible.

Turbine Visibility	Turbine Visibility & Percentage
Amount of Nearest Turbine Hidden in ft (m)	516.7 (157.5)
Percent of Nearest Turbine Hidden (%)	39.4%
Amount of Nearest Turbine Visible in ft (m)	795.4 (242.4)
Percent of Nearest Turbine Visible (%)	60.6%

NY Bight Turbine Specifications

Turbine Components	Measurements ft (m)
Rotor Diameter in ft (m)	1212 (369.4)
Total Height to Tip of Blade in ft (m)	1312 (399.9)
Hub Height in ft (m)	706 (215.2)
Support Structure Height in ft (m)	25 (7.6)
Service Platform in ft (m)	100 (30.5 ) x 200 (61.0) Steel Platform above MWS
Total Number of Turbines	1481

NY Bight Turbine Information - 853ft (260m)

Lease Area	Distance to Nearest Turbine in Miles (km)	Turbines Visible		
		Blade Tip	Hub	Mid Tower
Total	-	110	0	0
OCS-A 0544	31.38 (50.51)	110	0	0
OCS-A 0537	54.52 (87.75)	0	0	0
OCS-A 0538	54.62 (87.91)	0	0	0
OCS-A 0539	64.74 (104.18)	0	0	0
OCS-A 0541	76.19 (122.62)	0	0	0
OCS-A 0542	80.17 (129.02)	0	0	0

Blade tip counts are a summation of only blade tips visible, only hubs visible, and mid-towers visible. Hub counts are a summation of only hubs visible and mid towers visible.

Turbine Visibility	Turbine Visibility & Percentage
Amount of Nearest Turbine Hidden in ft (m)	516.7 (157.5)
Percent of Nearest Turbine Hidden (%)	60.6%
Amount of Nearest Turbine Visible in ft (m)	336.4 (102.5)
Percent of Nearest Turbine Visible (%)	39.4%

NY Bight Turbine Specifications

Turbine Components	Measurements ft (m)
Rotor Diameter in ft (m)	722 (220.1)
Total Height to Tip of Blade in ft (m)	853 (260)
Hub Height in ft (m)	361 (110)
Support Structure Height in ft (m)	25 (7.6)
Service Platform in ft (m)	100 (30.5 ) x 200 (61.0) Steel Platform above MWS
Total Number of Turbines	1481

External Turbine Information

Lease Area	Distance to Nearest Turbine in Miles (km)	Turbines Visible		
		Blade Tip	Hub	Mid Tower
Total	-	174	170	N/A
OCS-A 0499	N/A	0	0	N/A
OCS-A 0549	N/A	0	0	N/A
OCS-A 0512	14.2 (22.9)	174	170	N/A
OCS-A 0498	N/A	0	0	N/A
OCS-A 0532	N/A	0	0	N/A

Cumulative Turbine Visibility  
(Total WTG Count for NY Bight + External Leases)

1312ft (399.9m)			853ft (260m)		
Blade Tip	Hub	Mid Tower	Blade Tip	Hub	Mid Tower
284	258	0	284	170	0

The cumulative mid tower counts for both turbine heights are conservative values due to having no mid tower data for the external leases.

External Turbine Specifications

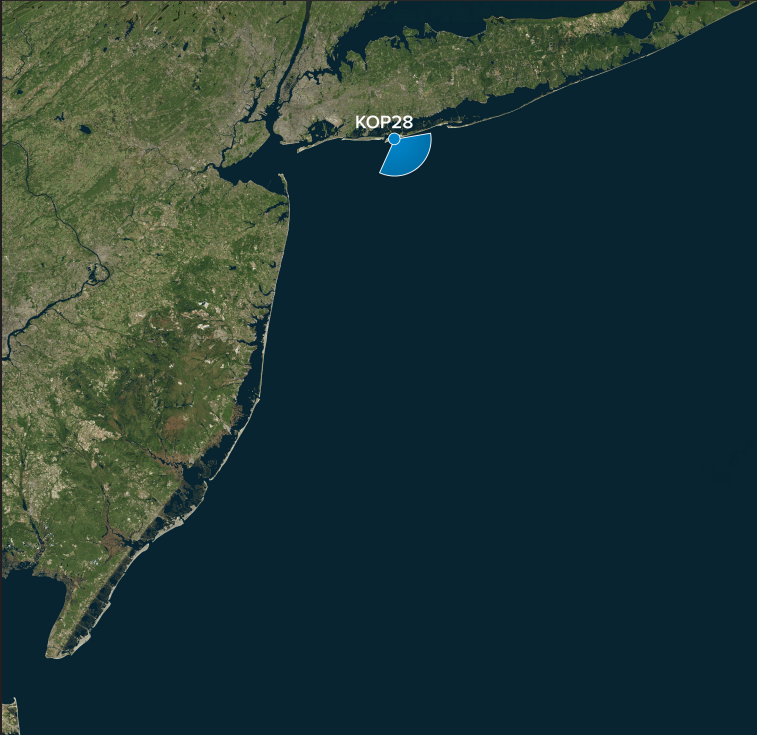
Lease Area	Rotor Diameter in ft (m)	Total Height to Tip of Blade in ft (m)	Hub Height in ft (m)	Support Structure Height in ft (m)
OCS-A 0499	918.6 (279.9)	1049 (319.7)	577 (176)	25 (7.6)
OCS-A 0549	918.6 (279.9)	1049 (319.7)	577 (176)	25 (7.6)
OCS-A 0512	853 (259.9)	951 (290)	525 (160)	25 (7.6)
OCS-A 0498	788 (240.1)	906 (276)	512 (156)	25 (7.6)
OCS-A 0532	788 (240.1)	906 (276)	512 (156)	25 (7.6)





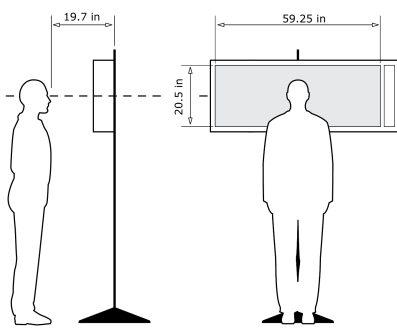
KOP 28, Jones Beach State Park, Late-Noon, Heading 143° - **Existing View**

For on-screen display:  
Scale bar to be 4 inches wide  
Viewing distance 19.7 inches



Latitude: 40.58008  
Longitude: -73.556652  
Elevation of Viewpoint Position: 3  
Height of Camera Above Ground: 5.41  
Date of Photography: 4/02/2023 at 15:37  
Horizontal Field of View: 124°  
Vertical Field of View: 55°

CORRECT VIEWING OF TRUEVIEW™ PHOTO SIMULATIONS



NOTES:

Viewpoint locations have been precision surveyed by  
**New York City Land Surveyors PC**  
63 Montgomery Avenue  
Staten Island NY 10301

Heights are above mean sea level.  
Structure design and placement are subject to final engineering.  
No part of this photo simulation shall be altered in any way.

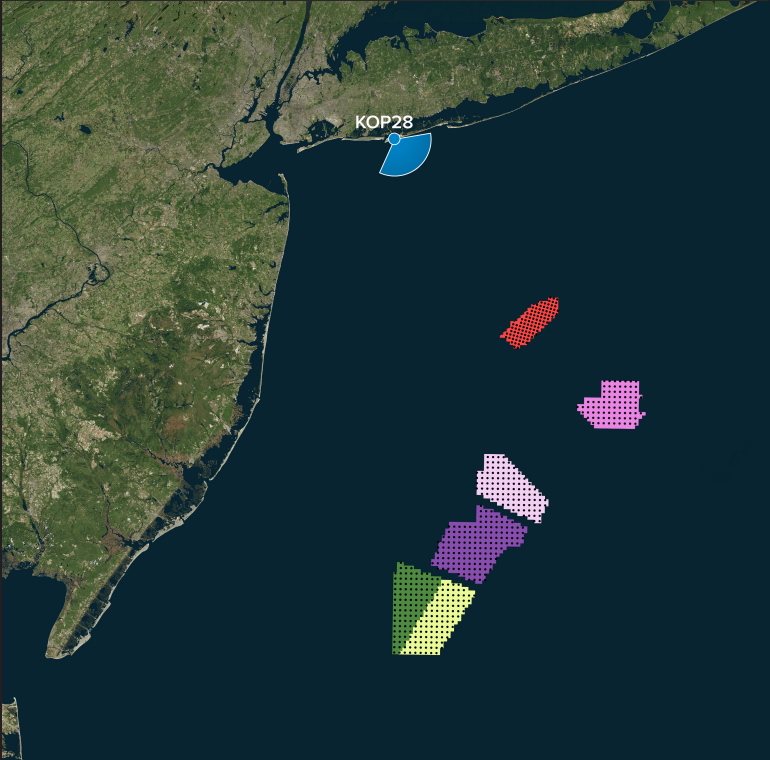
Photo Simulation Created Using  
TrueView™ Technology  
(Patent No.: US 6,184,906 B2)  
Provided by





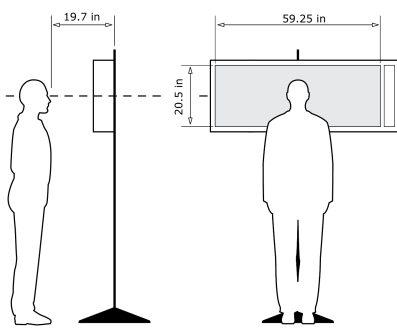
KOP 28, Jones Beach State Park, Late-Noon, Heading 143° - **Proposed View - NY Bight Leases (853ft) - Predicted Visibility**

For on-screen display:  
Scale bar to be 4 inches wide  
Viewing distance 19.7 inches



Latitude: 40.58008  
Longitude: -73.556652  
Elevation of Viewpoint Position: 3  
Height of Camera Above Ground: 5.41  
Date of Photography: 4/02/2023 at 15:37  
Horizontal Field of View: 124°  
Vertical Field of View: 95°  
Nearest Turbine: 31.4mi (50.5km) (OCS-A 0544)  
Furthest Visible Turbine: 37.4mi (60.2km) (OCS-A 0544)  
Horizontal Field of View the Projects Occupy: 23.1°

CORRECT VIEWING OF TRUEVIEW™ PHOTO SIMULATIONS

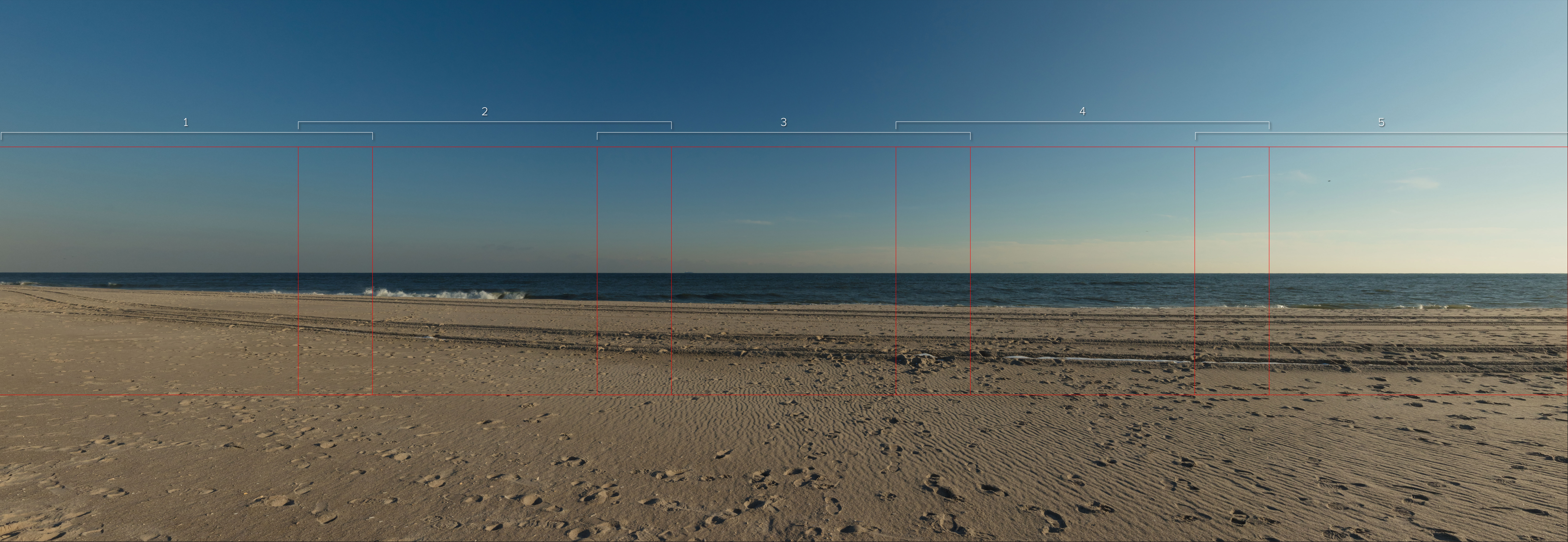


NOTES:

Viewpoint locations have been precision surveyed by  
**New York City Land Surveyors PC**  
63 Montgomery Avenue  
Staten Island NY 10301  
  
Heights are above mean sea level.  
Structure design and placement are subject to final engineering.  
No part of this photo simulation shall be altered in any way.

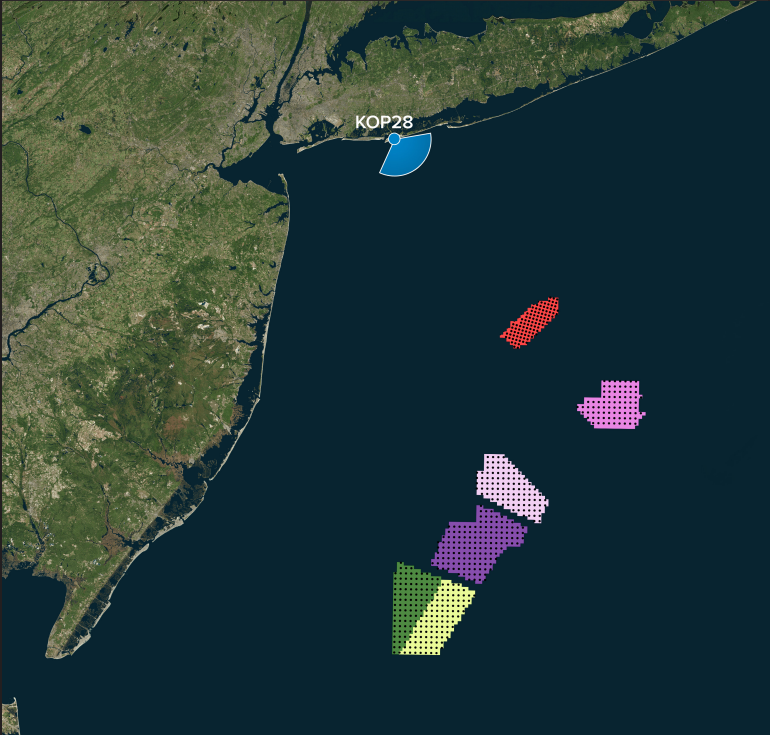
Photo Simulation Created Using  
TrueView™ Technology  
(Patent No.: US 6,184,906 B2)  
Provided by





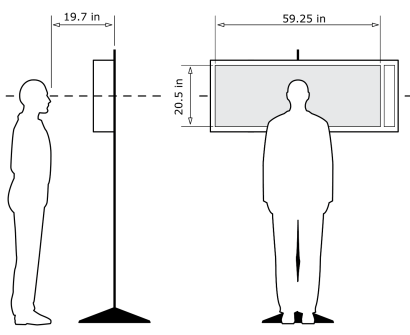
KOP 28, Jones Beach State Park, Late-Noon, Heading 143° - **Proposed View - NY Bight Leases (853ft) - Predicted Visibility**

For on-screen display:  
Scale bar to be 4 inches wide  
Viewing distance 19.7 inches



Latitude: 40.58008  
Longitude: -73.556652  
Elevation of Viewpoint Position: 3  
Height of Camera Above Ground: 5.41  
Date of Photography: 4/02/2023 at 15:37  
Horizontal Field of View: 124°  
Vertical Field of View: 55°  
Nearest Turbine: 31.4mi (50.5km) (OCS-A 0544)  
Furthest Visible Turbine: 37.4mi (60.2km) (OCS-A 0544)  
Horizontal Field of View the Projects Occupy: 23.1°

CORRECT VIEWING OF TRUEVIEW™ PHOTO SIMULATIONS



NOTES:  
Viewpoint locations have been precision surveyed by  
**New York City Land Surveyors PC**  
63 Montgomery Avenue  
Staten Island NY 10301  
  
Heights are above mean sea level.  
Structure design and placement are subject to final engineering.  
No part of this photo simulation shall be altered in any way.

Photo Simulation Created Using  
TrueView™ Technology  
(Patent No.: US 6,184,906 B2)  
Provided by





For on-screen display:  
Scale bar to be 4 inches wide  
Viewing distance 19.7 inches





For on-screen display:  
Scale bar to be 4 inches wide  
Viewing distance 19.7 inches





For on-screen display:  
Scale bar to be 4 inches wide  
Viewing distance 19.7 inches





For on-screen display:  
Scale bar to be 4 inches wide  
Viewing distance 19.7 inches





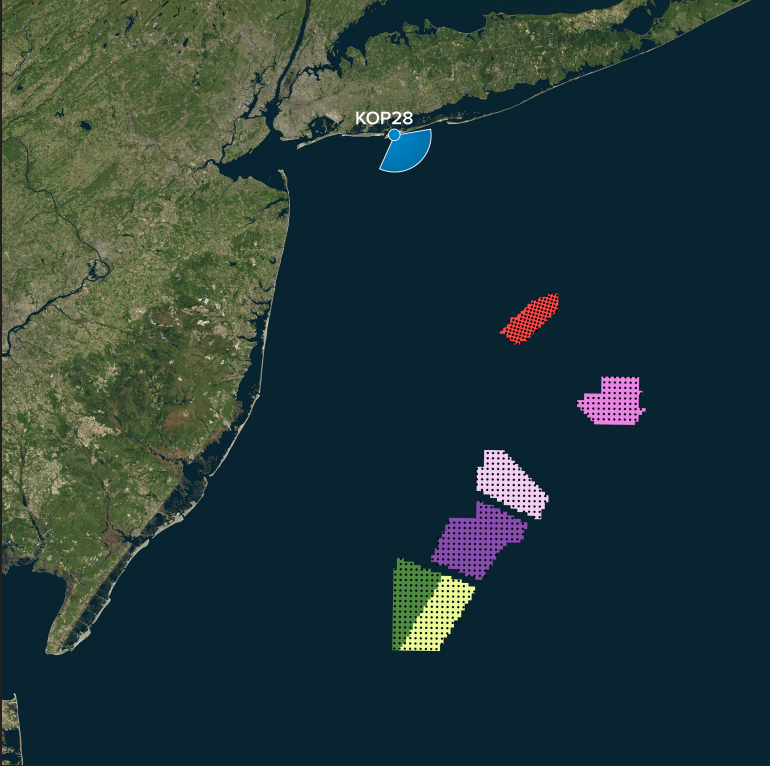
For on-screen display:  
Scale bar to be 4 inches wide  
Viewing distance 19.7 inches





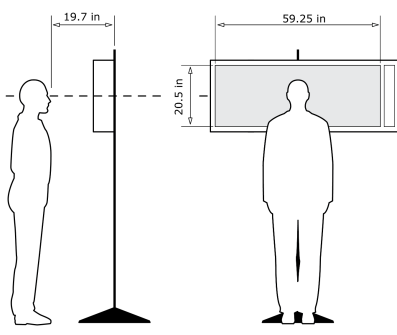
KOP 28, Jones Beach State Park, Late-Noon, Heading 143° - **Proposed View - NY Bight Leases (853ft) - Maximum Visibility**

For on-screen display:  
Scale bar to be 4 inches wide  
Viewing distance 19.7 inches



Latitude: 40.58008  
Longitude: -73.556652  
Elevation of Viewpoint Position: 3  
Height of Camera Above Ground: 5.41  
Date of Photography: 4/02/2023 at 15:37  
Horizontal Field of View: 124°  
Vertical Field of View: 95°  
Nearest Turbine: 31.4mi (50.5km) (OCS-A 0544)  
Furthest Visible Turbine: 37.4mi (60.2km) (OCS-A 0544)  
Horizontal Field of View the Projects Occupy: 23.1°

CORRECT VIEWING OF TRUEVIEW™ PHOTO SIMULATIONS



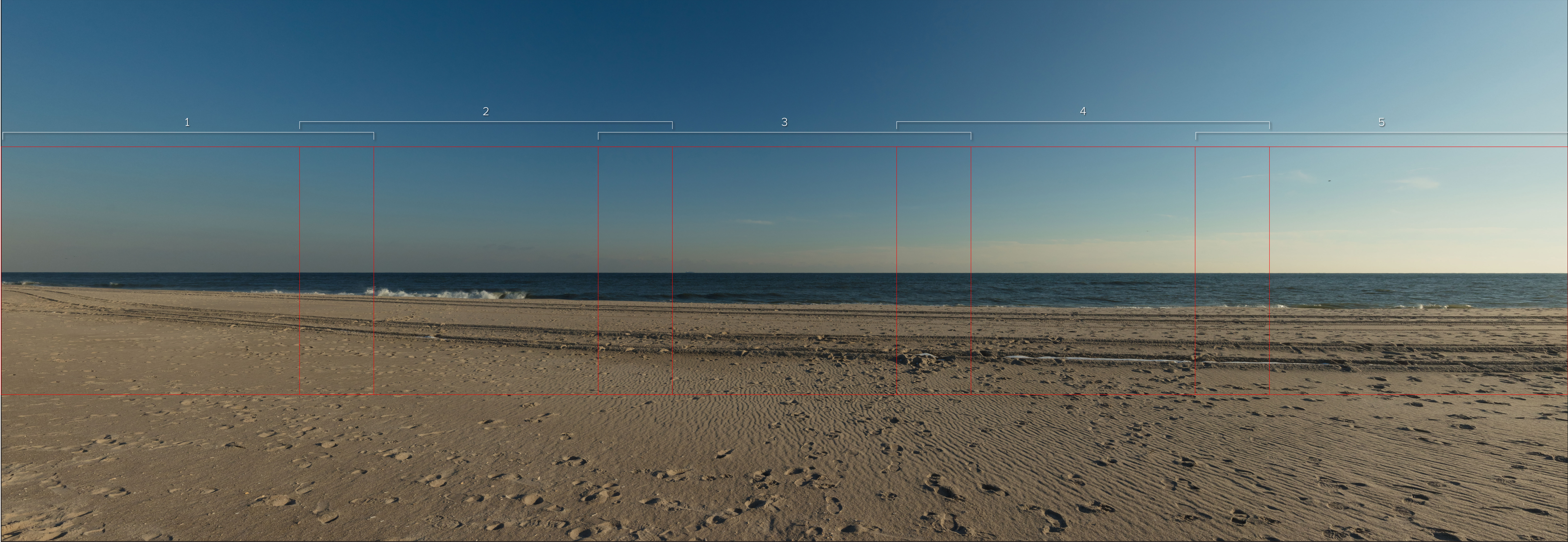
NOTES:

Viewpoint locations have been precision surveyed by  
**New York City Land Surveyors PC**  
63 Montgomery Avenue  
Staten Island NY 10301  
  
Heights are above mean sea level.  
Structure design and placement are subject to final engineering.  
No part of this photo simulation shall be altered in any way.

Photo Simulation Created Using  
TrueView™ Technology  
(Patent No.: US 6,184,906 B2)  
Provided by

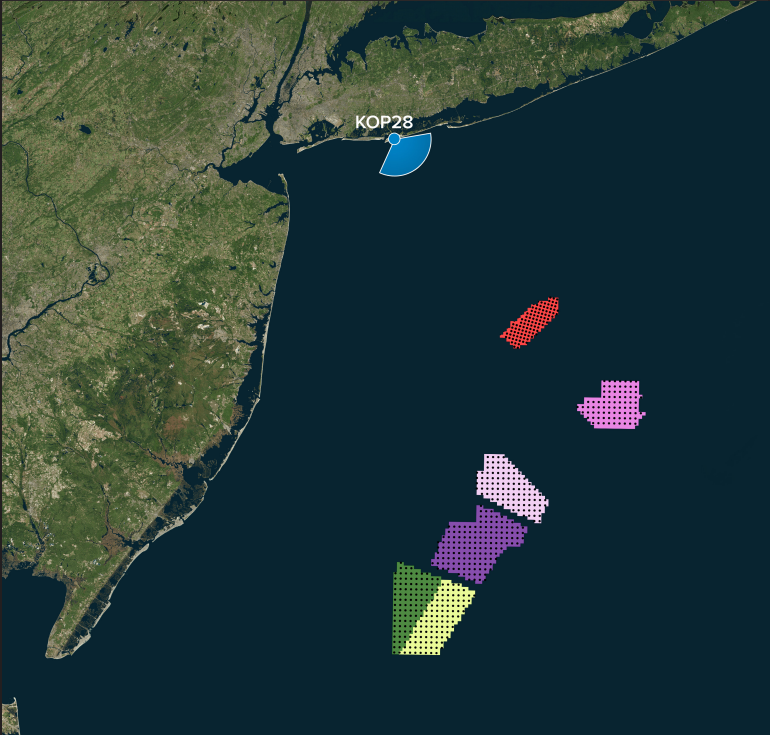
4/02/2023 at 15:37 - KOP 28





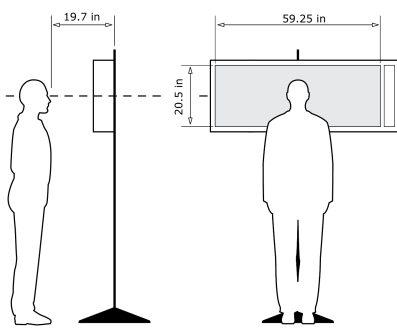
KOP 28, Jones Beach State Park, Late-Noon, Heading 143° - **Proposed View - NY Bight Leases (853ft) - Maximum Visibility**

For on-screen display:  
Scale bar to be 4 inches wide  
Viewing distance 19.7 inches



Latitude: 40.58008  
Longitude: -73.556652  
Elevation of Viewpoint Position: 3  
Height of Camera Above Ground: 5.41  
Date of Photography: 4/02/2023 at 15:37  
Horizontal Field of View: 124°  
Vertical Field of View: 55°  
Nearest Turbine: 31.4mi (50.5km) (OCS-A 0544)  
Furthest Visible Turbine: 37.4mi (60.2km) (OCS-A 0544)  
Horizontal Field of View the Projects Occupy: 23.1°

CORRECT VIEWING OF TRUEVIEW™ PHOTO SIMULATIONS



NOTES:

Viewpoint locations have been precision surveyed by  
**New York City Land Surveyors PC**  
63 Montgomery Avenue  
Staten Island NY 10301  
  
Heights are above mean sea level.  
Structure design and placement are subject to final engineering.  
No part of this photo simulation shall be altered in any way.

Photo Simulation Created Using  
TrueView™ Technology  
(Patent No.: US 6,184,906 B2)  
Provided by





For on-screen display:  
Scale bar to be 4 inches wide  
Viewing distance 19.7 inches









For on-screen display:  
Scale bar to be 4 inches wide  
Viewing distance 19.7 inches





For on-screen display:  
Scale bar to be 4 inches wide  
Viewing distance 19.7 inches





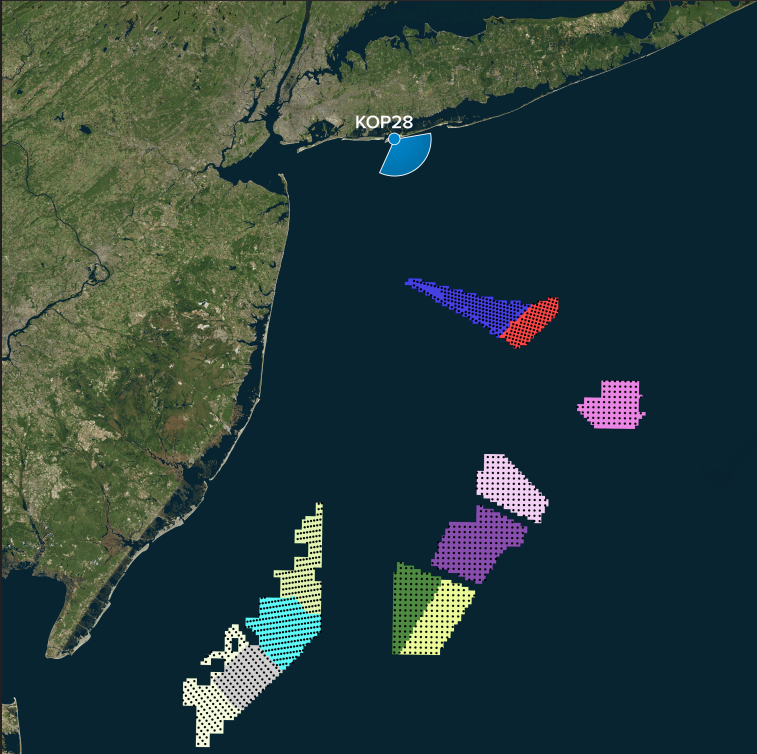
For on-screen display:  
Scale bar to be 4 inches wide  
Viewing distance 19.7 inches





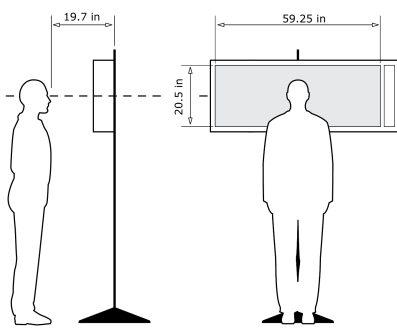
KOP 28, Jones Beach State Park, Late-Noon, Heading 143° - **Proposed View - Cumulative - External Leases and NY Bight Leases (853ft) - Predicted Visibility**

For on-screen display:  
Scale bar to be 4 inches wide  
Viewing distance 19.7 inches



Latitude: 40.58008  
Longitude: -73.556652  
Elevation of Viewpoint Position: 3  
Height of Camera Above Ground: 5.41  
Date of Photography: 4/02/2023 at 15:37  
Horizontal Field of View: 124°  
Vertical Field of View: 95°  
Nearest Turbine: 14.2mi (22.9km) (OCS-A 0512)  
Furthest Visible Turbine: 37.4mi (60.2km) (OCS-A 0544)  
Horizontal Field of View the Projects Occupy: 60.5°

CORRECT VIEWING OF TRUEVIEW™ PHOTO SIMULATIONS



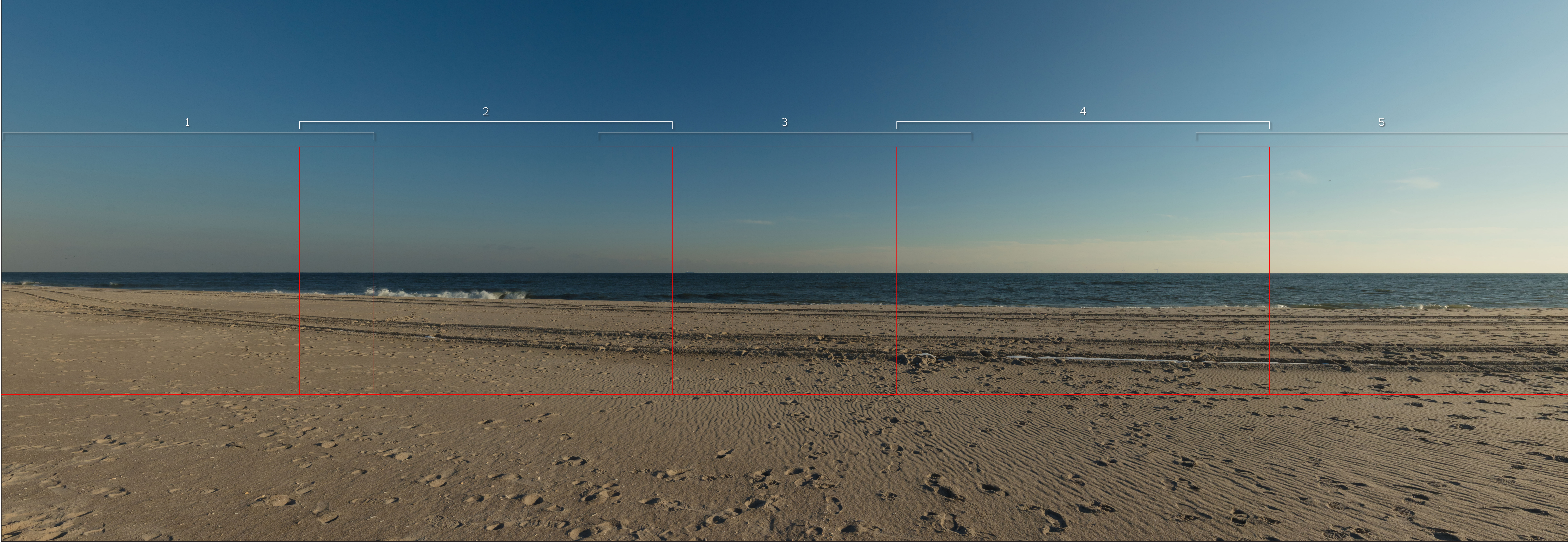
NOTES:

Viewpoint locations have been precision surveyed by  
**New York City Land Surveyors PC**  
63 Montgomery Avenue  
Staten Island NY 10301

Heights are above mean sea level.  
Structure design and placement are subject to final engineering.  
No part of this photo simulation shall be altered in any way.

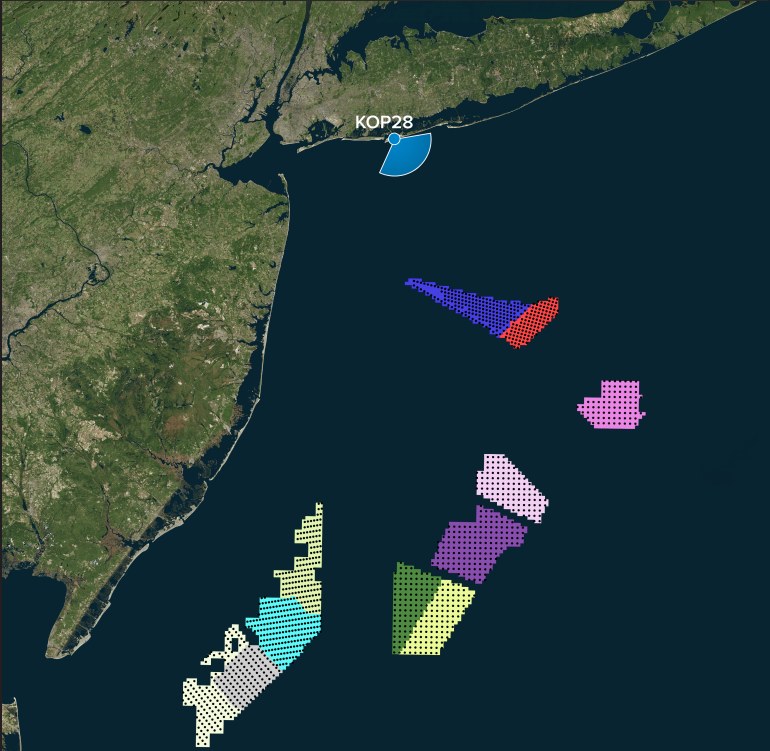
Photo Simulation Created Using  
TrueView™ Technology  
(Patent No.: US 6,184,906 B2)  
Provided by





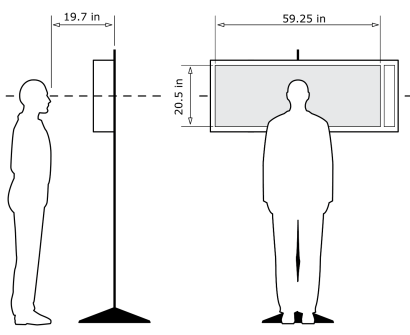
KOP 28, Jones Beach State Park, Late-Noon, Heading 143° - **Proposed View - Cumulative - External Leases and NY Bight Leases (853ft) - Predicted Visibility**

For on-screen display:  
Scale bar to be 4 inches wide  
Viewing distance 19.7 inches



Latitude: 40.58008  
Longitude: -73.556652  
Elevation of Viewpoint Position: 3  
Height of Camera Above Ground: 5.41  
Date of Photography: 4/02/2023 at 15:37  
Horizontal Field of View: 124°  
Vertical Field of View: 55°  
Nearest Turbine: 14.2mi (22.9km) (OCS-A 0512)  
Furthest Visible Turbine: 37.4mi (60.2km) (OCS-A 0544)  
Horizontal Field of View the Projects Occupy: 60.5°

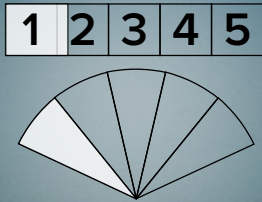
CORRECT VIEWING OF TRUEVIEW™ PHOTO SIMULATIONS



NOTES:  
Viewpoint locations have been precision surveyed by  
**New York City Land Surveyors PC**  
63 Montgomery Avenue  
Staten Island NY 10301  
  
Heights are above mean sea level.  
Structure design and placement are subject to final engineering.  
No part of this photo simulation shall be altered in any way.

Photo Simulation Created Using  
TrueView™ Technology  
(Patent No.: US 6,184,906 B2)  
Provided by





For on-screen display:  
Scale bar to be 4 inches wide  
Viewing distance 19.7 inches





For on-screen display:  
Scale bar to be 4 inches wide  
Viewing distance 19.7 inches





For on-screen display:  
Scale bar to be 4 inches wide  
Viewing distance 19.7 inches





For on-screen display:  
Scale bar to be 4 inches wide  
Viewing distance 19.7 inches





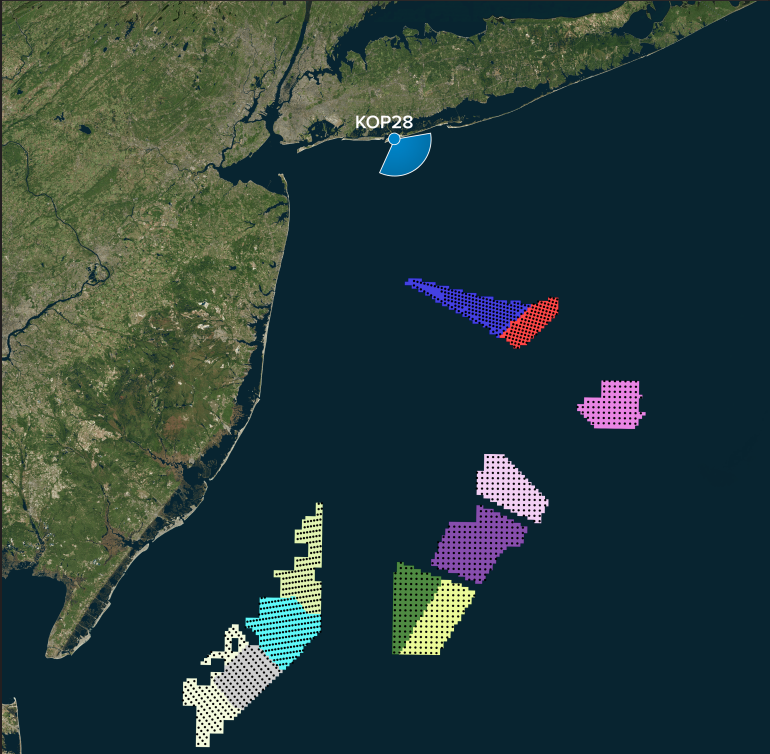
For on-screen display:  
Scale bar to be 4 inches wide  
Viewing distance 19.7 inches





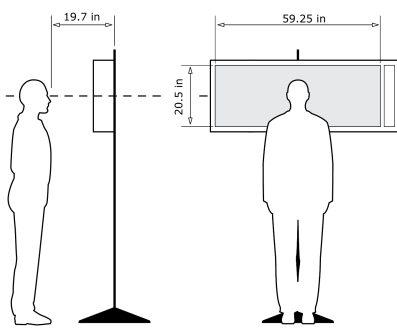
KOP 28, Jones Beach State Park, Late-Noon, Heading 143° - **Proposed View - Cumulative - External Leases and NY Bight Leases (853ft) - Maximum Visibility**

For on-screen display:  
Scale bar to be 4 inches wide  
Viewing distance 19.7 inches



Latitude: 40.58008  
Longitude: -73.556652  
Elevation of Viewpoint Position: 3  
Height of Camera Above Ground: 5.41  
Date of Photography: 4/02/2023 at 15:37  
Horizontal Field of View: 124°  
Vertical Field of View: 95°  
Nearest Turbine: 14.2mi (22.9km) (OCS-A 0512)  
Furthest Visible Turbine: 37.4mi (60.2km) (OCS-A 0544)  
Horizontal Field of View the Projects Occupy: 60.5°

CORRECT VIEWING OF TRUEVIEW™ PHOTO SIMULATIONS

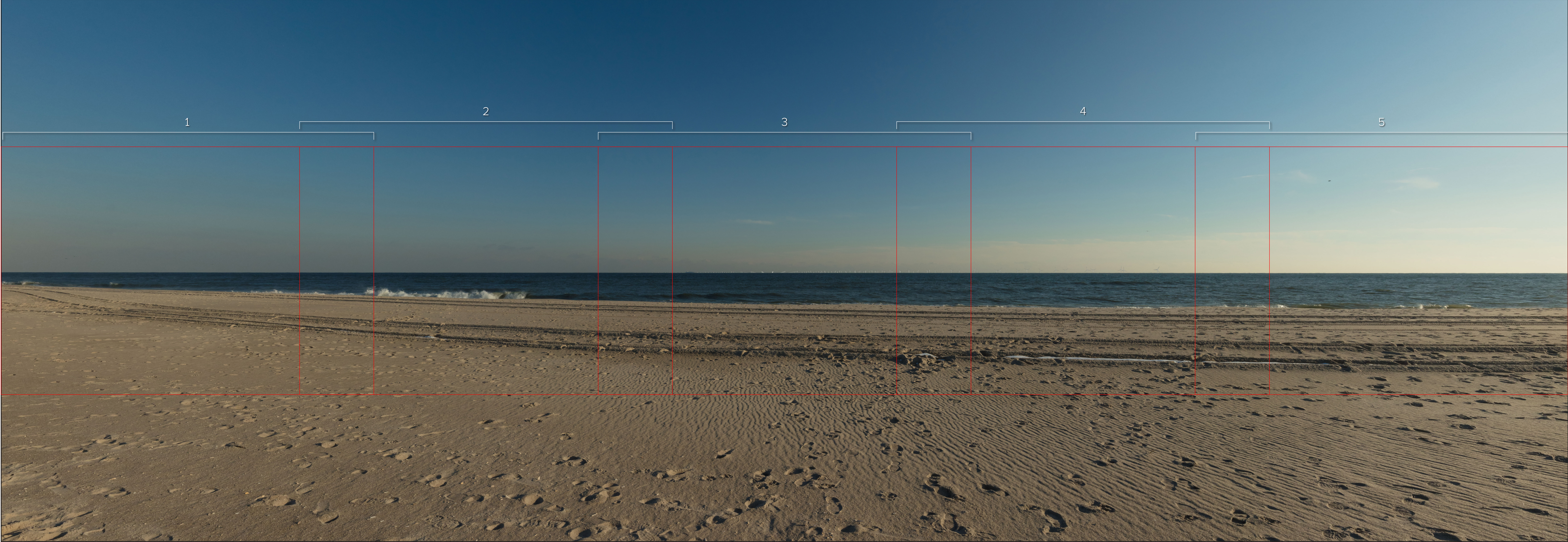


NOTES:

Viewpoint locations have been precision surveyed by  
**New York City Land Surveyors PC**  
63 Montgomery Avenue  
Staten Island NY 10301  
  
Heights are above mean sea level.  
Structure design and placement are subject to final engineering.  
No part of this photo simulation shall be altered in any way.

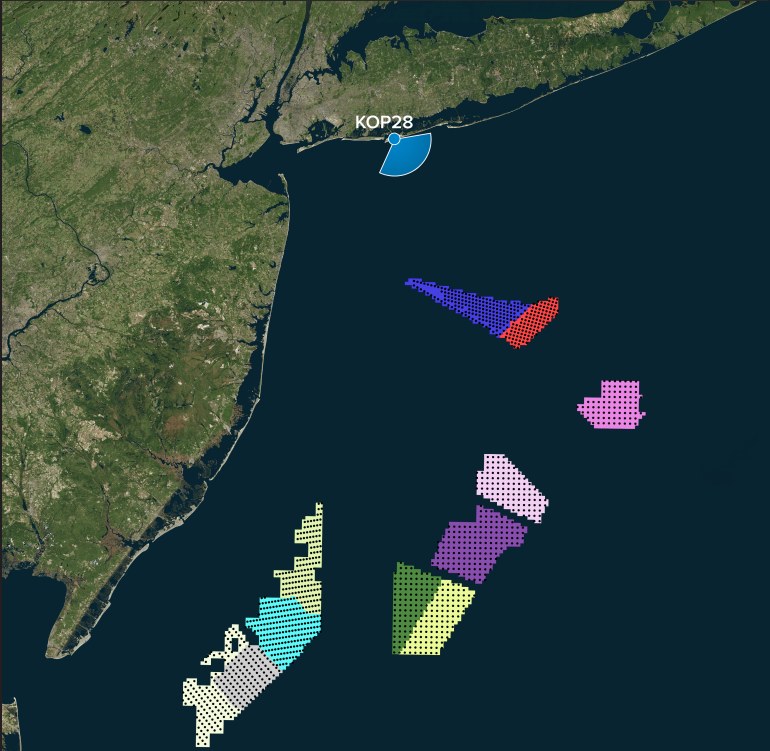
Photo Simulation Created Using  
TrueView™ Technology  
(Patent No.: US 6,184,906 B2)  
Provided by





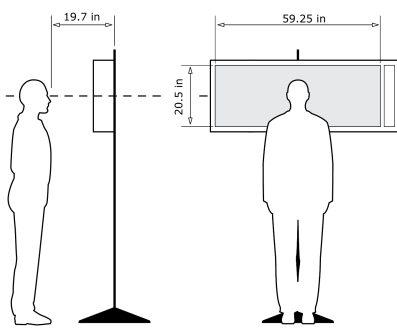
KOP 28, Jones Beach State Park, Late-Noon, Heading 143° - **Proposed View - Cumulative - External Leases and NY Bight Leases (853ft) - Maximum Visibility**

For on-screen display:  
Scale bar to be 4 inches wide  
Viewing distance 19.7 inches



Latitude: 40.58008  
Longitude: -73.556652  
Elevation of Viewpoint Position: 3  
Height of Camera Above Ground: 5.41  
Date of Photography: 4/02/2023 at 15:37  
Horizontal Field of View: 124°  
Vertical Field of View: 55°  
Nearest Turbine: 14.2mi (22.9km) (OCS-A 0512)  
Furthest Visible Turbine: 37.4mi (60.2km) (OCS-A 0544)  
Horizontal Field of View the Projects Occupy: 60.5°

CORRECT VIEWING OF TRUEVIEW™ PHOTO SIMULATIONS



NOTES:  
Viewpoint locations have been precision surveyed by  
**New York City Land Surveyors PC**  
63 Montgomery Avenue  
Staten Island NY 10301  
  
Heights are above mean sea level.  
Structure design and placement are subject to final engineering.  
No part of this photo simulation shall be altered in any way.

Photo Simulation Created Using  
TrueView™ Technology  
(Patent No.: US 6,184,906 B2)  
Provided by





For on-screen display:  
Scale bar to be 4 inches wide  
Viewing distance 19.7 inches





For on-screen display:  
Scale bar to be 4 inches wide  
Viewing distance 19.7 inches





For on-screen display:  
Scale bar to be 4 inches wide  
Viewing distance 19.7 inches





For on-screen display:  
Scale bar to be 4 inches wide  
Viewing distance 19.7 inches





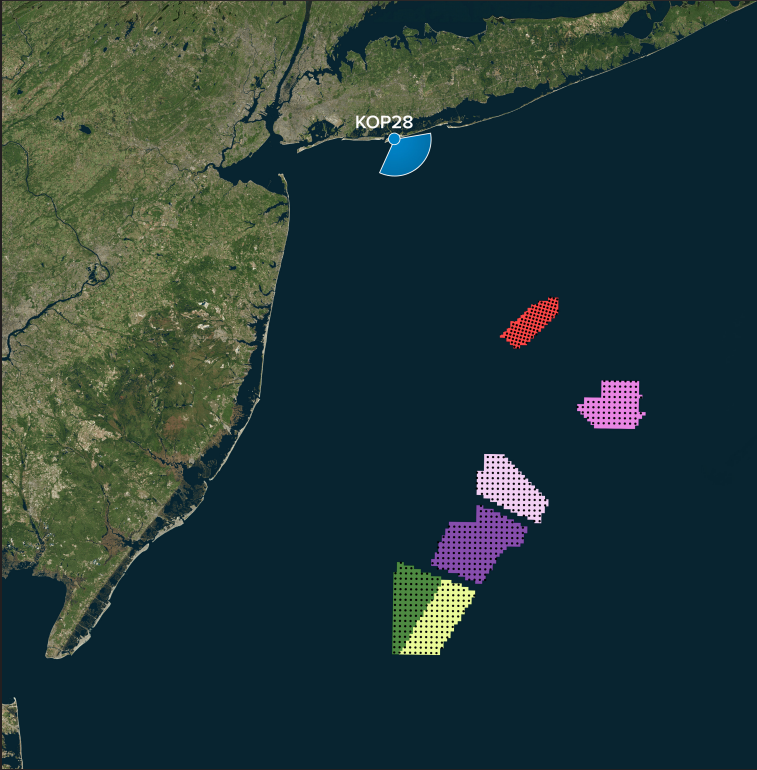
For on-screen display:  
Scale bar to be 4 inches wide  
Viewing distance 19.7 inches





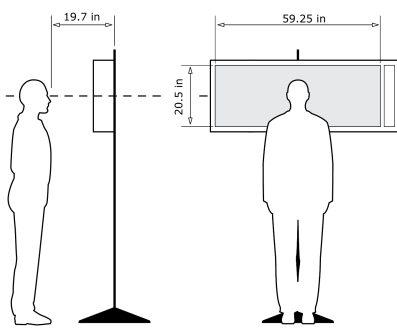
KOP 28, Jones Beach State Park, Late-Noon, Heading 143° - **Proposed View - NY Bight Leases (1312ft) - Predicted Visibility**

For on-screen display:  
Scale bar to be 4 inches wide  
Viewing distance 19.7 inches



Latitude: 40.58008  
Longitude: -73.556652  
Elevation of Viewpoint Position: 3  
Height of Camera Above Ground: 5.41  
Date of Photography: 4/02/2023 at 15:37  
Horizontal Field of View: 124°  
Vertical Field of View: 95°  
Nearest Turbine: 31.4mi (50.5km) (OCS-A 0544)  
Furthest Visible Turbine: 37.4mi (60.2km) (OCS-A 0544)  
Horizontal Field of View the Projects Occupy: 23.1°

CORRECT VIEWING OF TRUEVIEW™ PHOTO SIMULATIONS



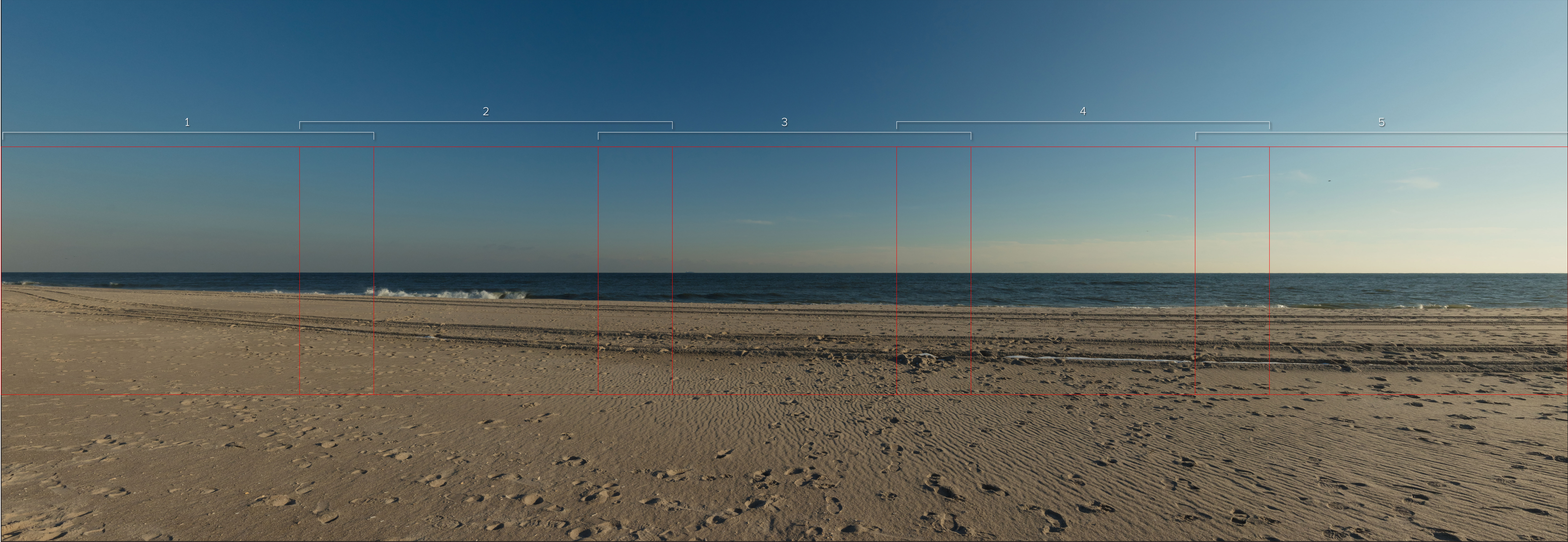
NOTES:

Viewpoint locations have been precision surveyed by  
**New York City Land Surveyors PC**  
63 Montgomery Avenue  
Staten Island NY 10301  
  
Heights are above mean sea level.  
Structure design and placement are subject to final engineering.  
No part of this photo simulation shall be altered in any way.

Photo Simulation Created Using  
TrueView™ Technology  
(Patent No.: US 6,184,906 B2)  
Provided by

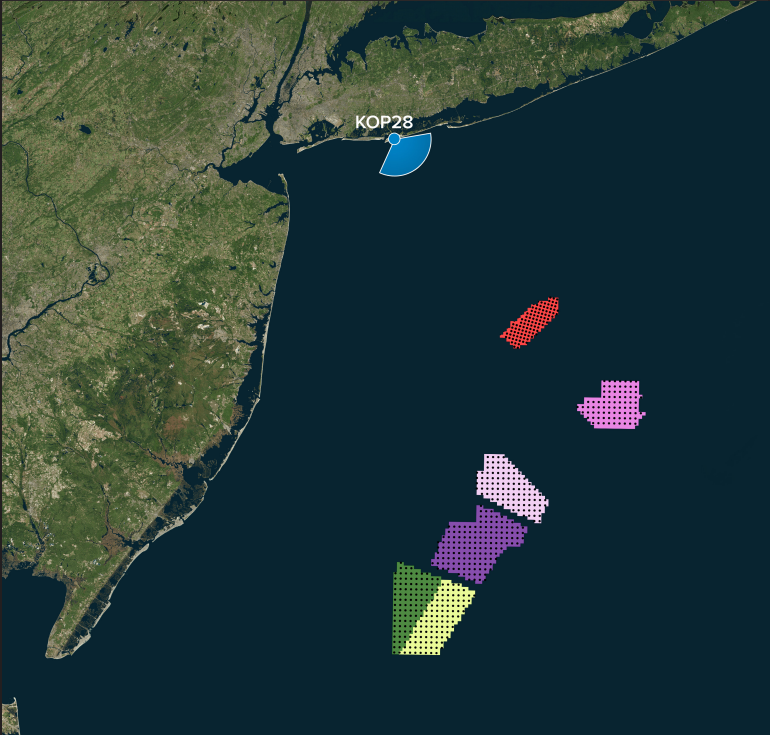
4/02/2023 at 15:37 - KOP 28





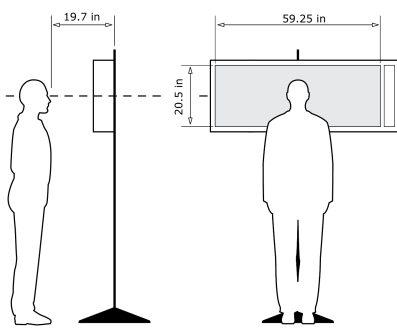
KOP 28, Jones Beach State Park, Late-Noon, Heading 143° - **Proposed View - NY Bight Leases (1312ft) - Predicted Visibility**

For on-screen display:  
Scale bar to be 4 inches wide  
Viewing distance 19.7 inches



Latitude: 40.58008  
Longitude: -73.556652  
Elevation of Viewpoint Position: 3  
Height of Camera Above Ground: 5.41  
Date of Photography: 4/02/2023 at 15:37  
Horizontal Field of View: 124°  
Vertical Field of View: 55°  
Nearest Turbine: 31.4mi (50.5km) (OCS-A 0544)  
Furthest Visible Turbine: 37.4mi (60.2km) (OCS-A 0544)  
Horizontal Field of View the Projects Occupy: 23.1°

CORRECT VIEWING OF TRUEVIEW™ PHOTO SIMULATIONS



NOTES:  
Viewpoint locations have been precision surveyed by  
**New York City Land Surveyors PC**  
63 Montgomery Avenue  
Staten Island NY 10301  
  
Heights are above mean sea level.  
Structure design and placement are subject to final engineering.  
No part of this photo simulation shall be altered in any way.

Photo Simulation Created Using  
TrueView™ Technology  
(Patent No.: US 6,184,906 B2)  
Provided by





For on-screen display:  
Scale bar to be 4 inches wide  
Viewing distance 19.7 inches





For on-screen display:  
Scale bar to be 4 inches wide  
Viewing distance 19.7 inches





For on-screen display:  
Scale bar to be 4 inches wide  
Viewing distance 19.7 inches





For on-screen display:  
Scale bar to be 4 inches wide  
Viewing distance 19.7 inches





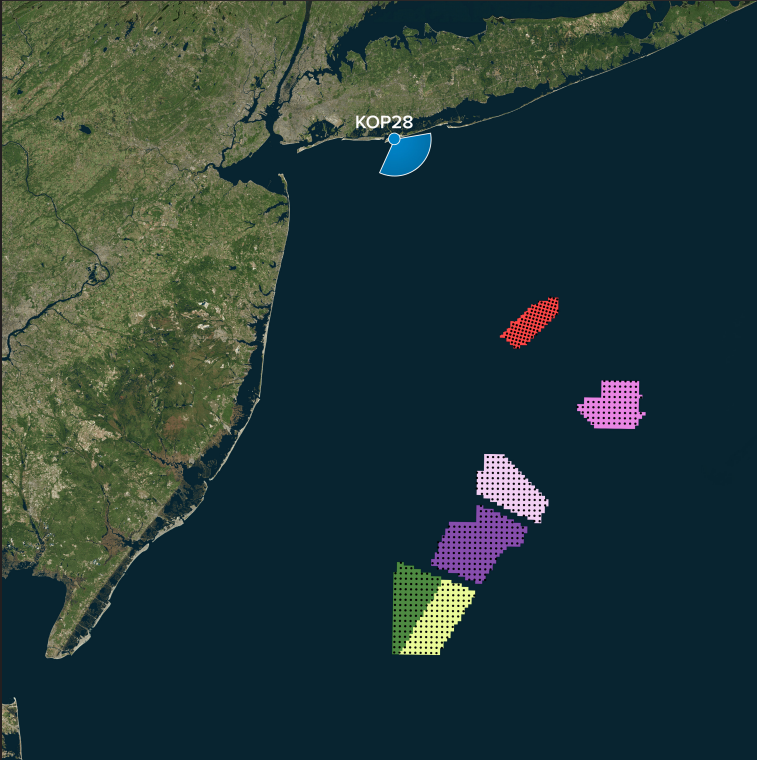
For on-screen display:  
Scale bar to be 4 inches wide  
Viewing distance 19.7 inches





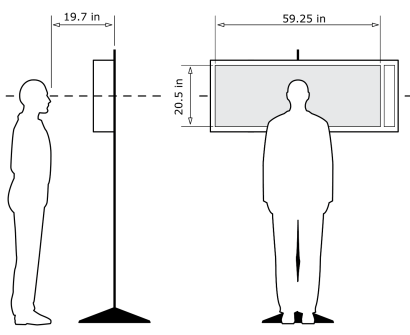
KOP 28, Jones Beach State Park, Late-Noon, Heading 143° - **Proposed View - NY Bight Leases (1312ft) - Maximum Visibility**

For on-screen display:  
Scale bar to be 4 inches wide  
Viewing distance 19.7 inches



Latitude: 40.58008  
Longitude: -73.556652  
Elevation of Viewpoint Position: 3  
Height of Camera Above Ground: 5.41  
Date of Photography: 4/02/2023 at 15:37  
Horizontal Field of View: 124°  
Vertical Field of View: 95°  
Nearest Turbine: 31.4mi (50.5km) (OCS-A 0544)  
Furthest Visible Turbine: 37.4mi (60.2km) (OCS-A 0544)  
Horizontal Field of View the Projects Occupy: 23.1°

CORRECT VIEWING OF TRUEVIEW™ PHOTO SIMULATIONS

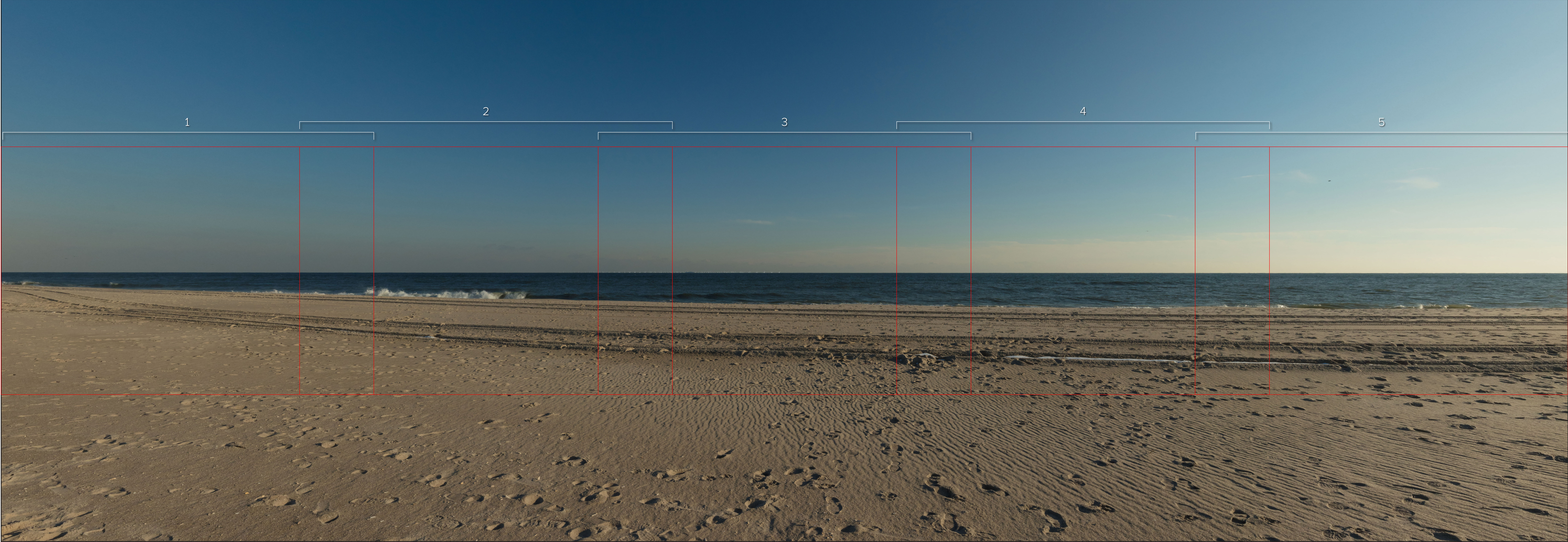


NOTES:  
Viewpoint locations have been precision surveyed by  
**New York City Land Surveyors PC**  
63 Montgomery Avenue  
Staten Island NY 10301  
  
Heights are above mean sea level.  
Structure design and placement are subject to final engineering.  
No part of this photo simulation shall be altered in any way.

Photo Simulation Created Using  
TrueView™ Technology  
(Patent No.: US 6,184,906 B2)  
Provided by

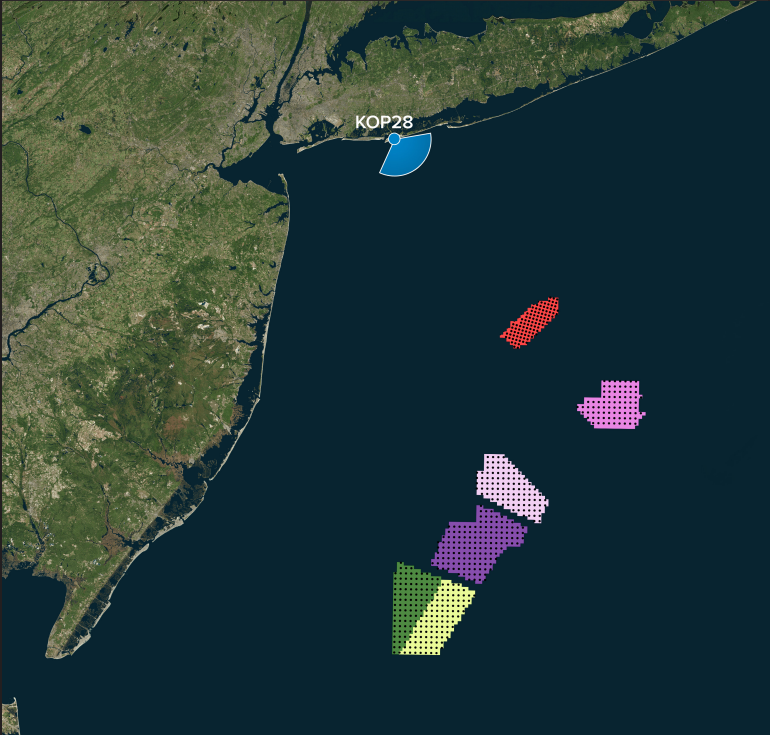
4/02/2023 at 15:37 - KOP 28





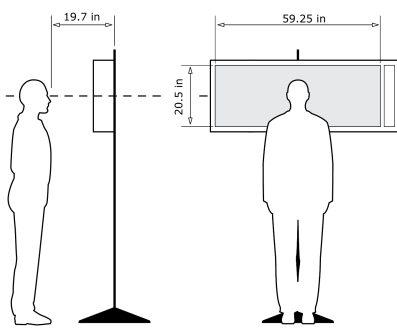
KOP 28, Jones Beach State Park, Late-Noon, Heading 143° - **Proposed View - NY Bight Leases (1312ft) - Maximum Visibility**

For on-screen display:  
Scale bar to be 4 inches wide  
Viewing distance 19.7 inches



Latitude: 40.58008  
Longitude: -73.556652  
Elevation of Viewpoint Position: 3  
Height of Camera Above Ground: 5.41  
Date of Photography: 4/02/2023 at 15:37  
Horizontal Field of View: 124°  
Vertical Field of View: 55°  
Nearest Turbine: 31.4mi (50.5km) (OCS-A 0544)  
Furthest Visible Turbine: 37.4mi (60.2km) (OCS-A 0544)  
Horizontal Field of View the Projects Occupy: 23.1°

CORRECT VIEWING OF TRUEVIEW™ PHOTO SIMULATIONS



NOTES:  
Viewpoint locations have been precision surveyed by  
**New York City Land Surveyors PC**  
63 Montgomery Avenue  
Staten Island NY 10301  
  
Heights are above mean sea level.  
Structure design and placement are subject to final engineering.  
No part of this photo simulation shall be altered in any way.

Photo Simulation Created Using  
TrueView™ Technology  
(Patent No.: US 6,184,906 B2)  
Provided by





For on-screen display:  
Scale bar to be 4 inches wide  
Viewing distance 19.7 inches





For on-screen display:  
Scale bar to be 4 inches wide  
Viewing distance 19.7 inches



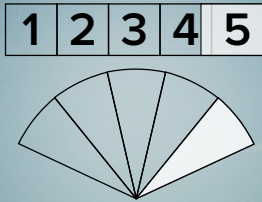






For on-screen display:  
Scale bar to be 4 inches wide  
Viewing distance 19.7 inches





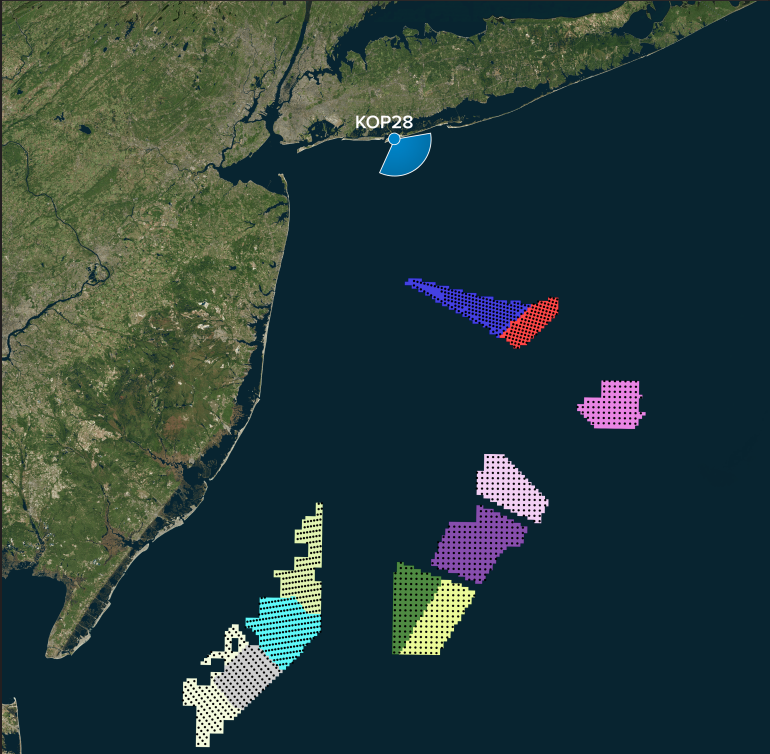
For on-screen display:  
Scale bar to be 4 inches wide  
Viewing distance 19.7 inches





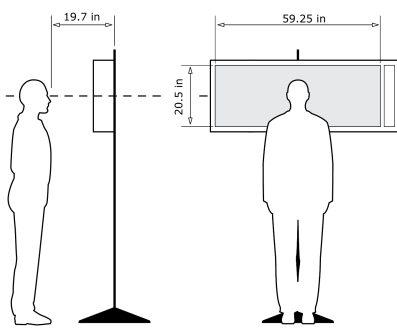
KOP 28, Jones Beach State Park, Late-Noon, Heading 143° - **Proposed View - Cumulative - External Leases and NY Bight Leases (1312ft) - Predicted Visibility**

For on-screen display:  
Scale bar to be 4 inches wide  
Viewing distance 19.7 inches



Latitude: 40.58008  
Longitude: -73.556652  
Elevation of Viewpoint Position: 3  
Height of Camera Above Ground: 5.41  
Date of Photography: 4/02/2023 at 15:37  
Horizontal Field of View: 124°  
Vertical Field of View: 95°  
Nearest Turbine: 14.2mi (22.9km) (OCS-A 0512)  
Furthest Visible Turbine: 37.4mi (60.2km) (OCS-A 0544)  
Horizontal Field of View the Projects Occupy: 60.5°

CORRECT VIEWING OF TRUEVIEW™ PHOTO SIMULATIONS



NOTES:

Viewpoint locations have been precision surveyed by  
**New York City Land Surveyors PC**  
63 Montgomery Avenue  
Staten Island NY 10301

Heights are above mean sea level.  
Structure design and placement are subject to final engineering.  
No part of this photo simulation shall be altered in any way.

Photo Simulation Created Using  
TrueView™ Technology  
(Patent No.: US 6,184,906 B2)  
Provided by

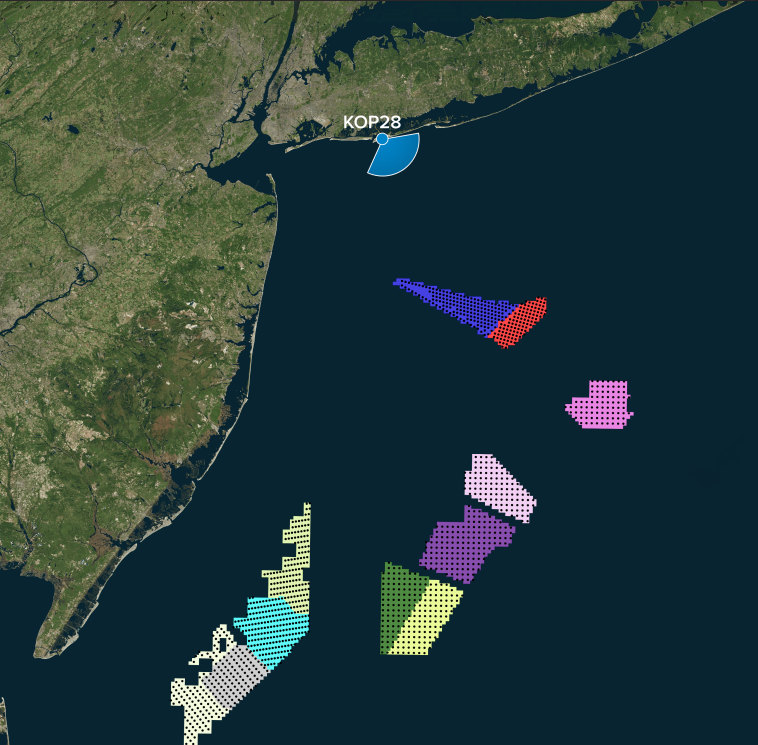
4/02/2023 at 15:37 - KOP 28





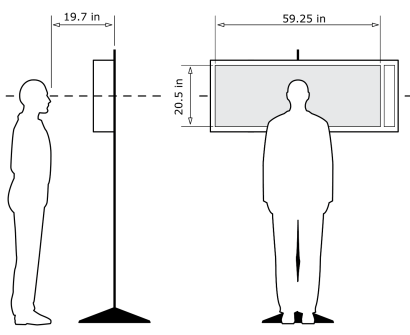
KOP 28, Jones Beach State Park, Late-Noon, Heading 143° - **Proposed View - Cumulative - External Leases and NY Bight Leases (1312ft) - Predicted Visibility**

For on-screen display:  
Scale bar to be 4 inches wide  
Viewing distance 19.7 inches



Latitude: 40.58008  
Longitude: -73.556652  
Elevation of Viewpoint Position: 3  
Height of Camera Above Ground: 5.41  
Date of Photography: 4/02/2023 at 15:37  
Horizontal Field of View: 124°  
Vertical Field of View: 55°  
Nearest Turbine: 14.2mi (22.9km) (OCS-A 0512)  
Furthest Visible Turbine: 37.4mi (60.2km) (OCS-A 0544)  
Horizontal Field of View the Projects Occupy: 60.5°

CORRECT VIEWING OF TRUEVIEW™ PHOTO SIMULATIONS



NOTES:

Viewpoint locations have been precision surveyed by  
**New York City Land Surveyors PC**  
63 Montgomery Avenue  
Staten Island NY 10301  
  
Heights are above mean sea level.  
Structure design and placement are subject to final engineering.  
No part of this photo simulation shall be altered in any way.

Photo Simulation Created Using  
TrueView™ Technology  
(Patent No.: US 6,184,906 B2)  
Provided by





For on-screen display:  
Scale bar to be 4 inches wide  
Viewing distance 19.7 inches





For on-screen display:  
Scale bar to be 4 inches wide  
Viewing distance 19.7 inches





For on-screen display:  
Scale bar to be 4 inches wide  
Viewing distance 19.7 inches





For on-screen display:  
Scale bar to be 4 inches wide  
Viewing distance 19.7 inches





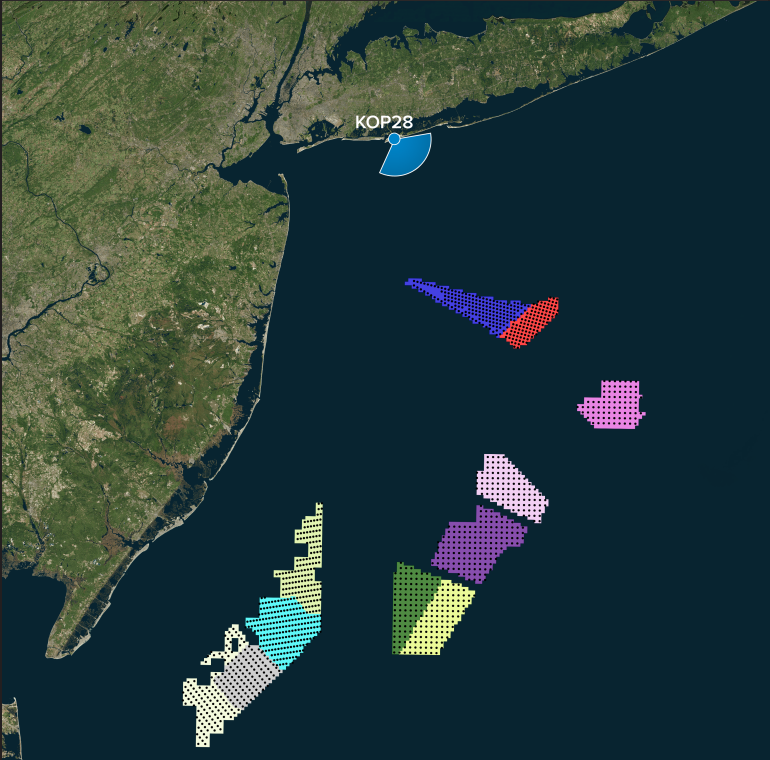
For on-screen display:  
Scale bar to be 4 inches wide  
Viewing distance 19.7 inches





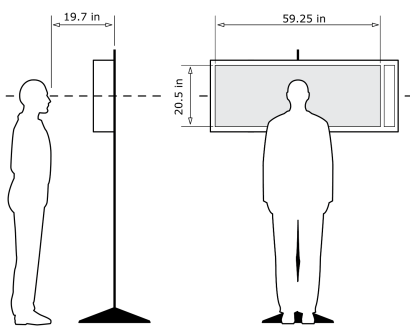
KOP 28, Jones Beach State Park, Late-Noon, Heading 143° - **Proposed View - Cumulative - External Leases and NY Bight Leases (1312ft) - Maximum Visibility**

For on-screen display:  
Scale bar to be 4 inches wide  
Viewing distance 19.7 inches



Latitude: 40.58008  
Longitude: -73.556652  
Elevation of Viewpoint Position: 3  
Height of Camera Above Ground: 5.41  
Date of Photography: 4/02/2023 at 15:37  
Horizontal Field of View: 124°  
Vertical Field of View: 95°  
Nearest Turbine: 14.2mi (22.9km) (OCS-A 0512)  
Furthest Visible Turbine: 37.4mi (60.2km) (OCS-A 0544)  
Horizontal Field of View the Projects Occupy: 60.5°

CORRECT VIEWING OF TRUEVIEW™ PHOTO SIMULATIONS



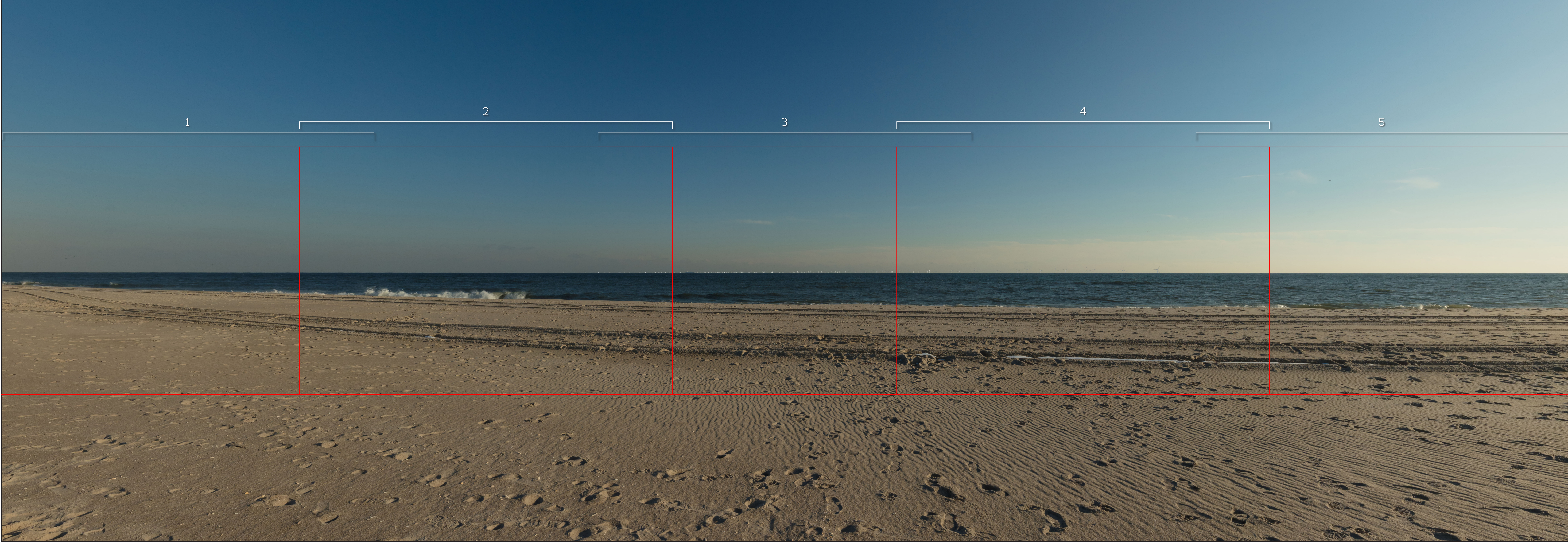
NOTES:

Viewpoint locations have been precision surveyed by  
**New York City Land Surveyors PC**  
63 Montgomery Avenue  
Staten Island NY 10301  
  
Heights are above mean sea level.  
Structure design and placement are subject to final engineering.  
No part of this photo simulation shall be altered in any way.

Photo Simulation Created Using  
TrueView™ Technology  
(Patent No.: US 6,184,906 B2)  
Provided by

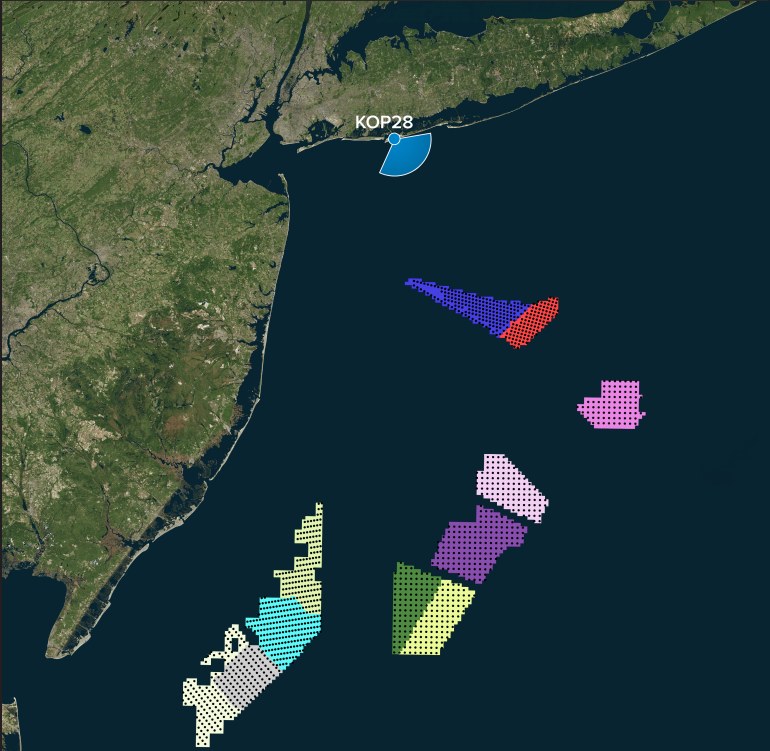
4/02/2023 at 15:37 - KOP 28





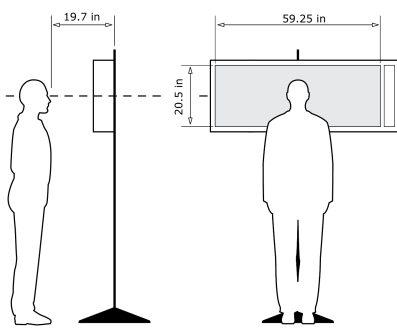
KOP 28, Jones Beach State Park, Late-Noon, Heading 143° - **Proposed View - Cumulative - External Leases and NY Bight Leases (1312ft) - Maximum Visibility**

For on-screen display:  
Scale bar to be 4 inches wide  
Viewing distance 19.7 inches



Latitude: 40.58008  
Longitude: -73.556652  
Elevation of Viewpoint Position: 3  
Height of Camera Above Ground: 5.41  
Date of Photography: 4/02/2023 at 15:37  
Horizontal Field of View: 124°  
Vertical Field of View: 55°  
Nearest Turbine: 14.2mi (22.9km) (OCS-A 0512)  
Furthest Visible Turbine: 37.4mi (60.2km) (OCS-A 0544)  
Horizontal Field of View the Projects Occupy: 60.5°

CORRECT VIEWING OF TRUEVIEW™ PHOTO SIMULATIONS



NOTES:

Viewpoint locations have been precision surveyed by  
**New York City Land Surveyors PC**  
63 Montgomery Avenue  
Staten Island NY 10301  
  
Heights are above mean sea level.  
Structure design and placement are subject to final engineering.  
No part of this photo simulation shall be altered in any way.

Photo Simulation Created Using  
TrueView™ Technology  
(Patent No.: US 6,184,906 B2)  
Provided by

4/02/2023 at 15:37 - KOP 28



**PROPOSED VIEW - CUMULATIVE - EXTERNAL LEASES & NY BIGHT LEASES (1312 FT) - MAXIMUM VISIBILITY - 50MM CROP - (WINTER / LATE-NOON)**

**Truescape®**



4/02/2023 at 15:37 - KOP 28

For on-screen display:  
Scale bar to be 4 inches wide  
Viewing distance 19.7 inches





For on-screen display:  
Scale bar to be 4 inches wide  
Viewing distance 19.7 inches





For on-screen display:  
Scale bar to be 4 inches wide  
Viewing distance 19.7 inches





For on-screen display:  
Scale bar to be 4 inches wide  
Viewing distance 19.7 inches





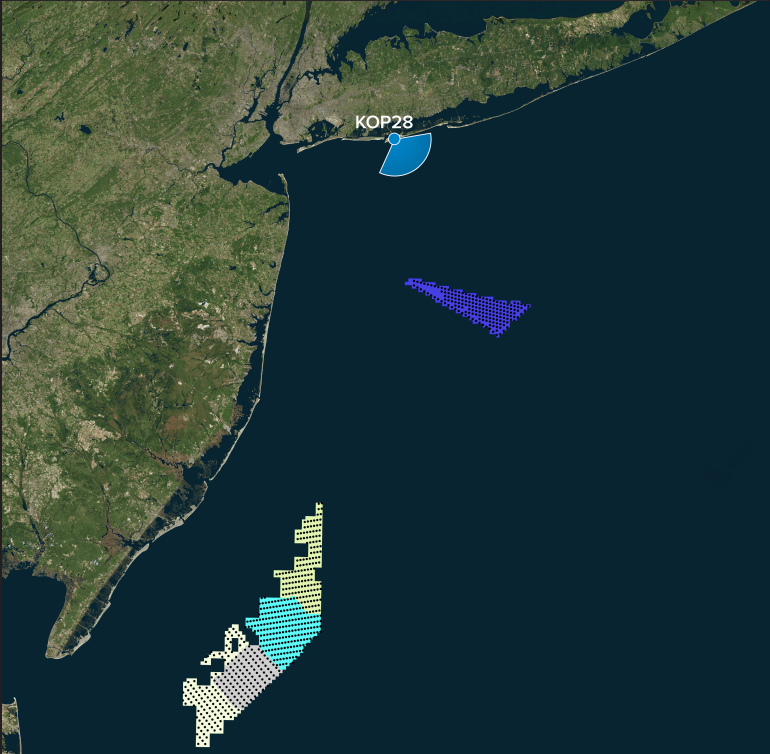
For on-screen display:  
Scale bar to be 4 inches wide  
Viewing distance 19.7 inches





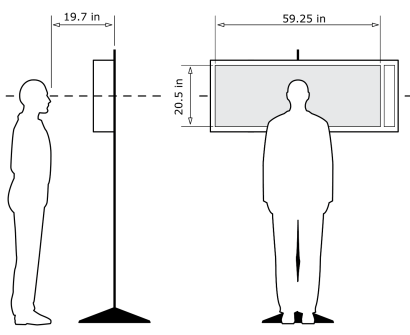
KOP 28, Jones Beach State Park, Late-Noon, Heading 143° - **Proposed View - External Leases - Predicted Visibility**

For on-screen display:  
Scale bar to be 4 inches wide  
Viewing distance 19.7 inches



Latitude: 40.58008  
Longitude: -73.556652  
Elevation of Viewpoint Position: 3  
Height of Camera Above Ground: 5.41  
Date of Photography: 4/02/2023 at 15:37  
Horizontal Field of View: 124°  
Vertical Field of View: 55°

CORRECT VIEWING OF TRUEVIEW™ PHOTO SIMULATIONS



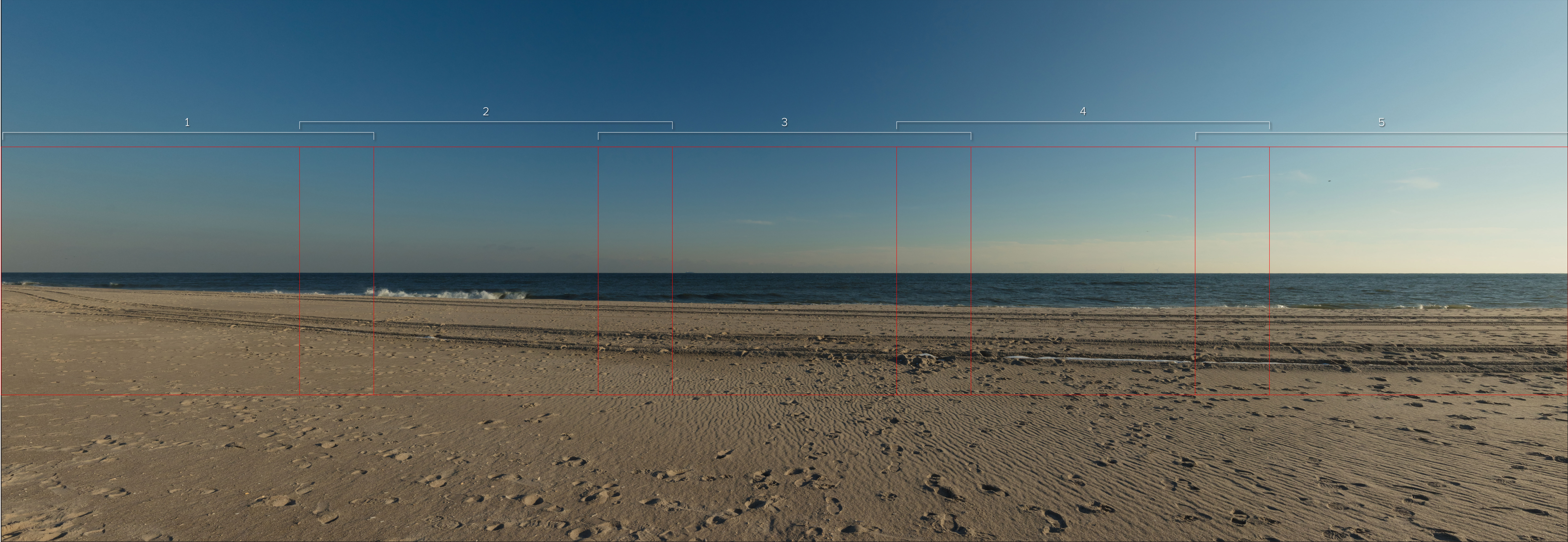
NOTES:

Viewpoint locations have been precision surveyed by  
**New York City Land Surveyors PC**  
63 Montgomery Avenue  
Staten Island NY 10301

Heights are above mean sea level.  
Structure design and placement are subject to final engineering.  
No part of this photo simulation shall be altered in any way.

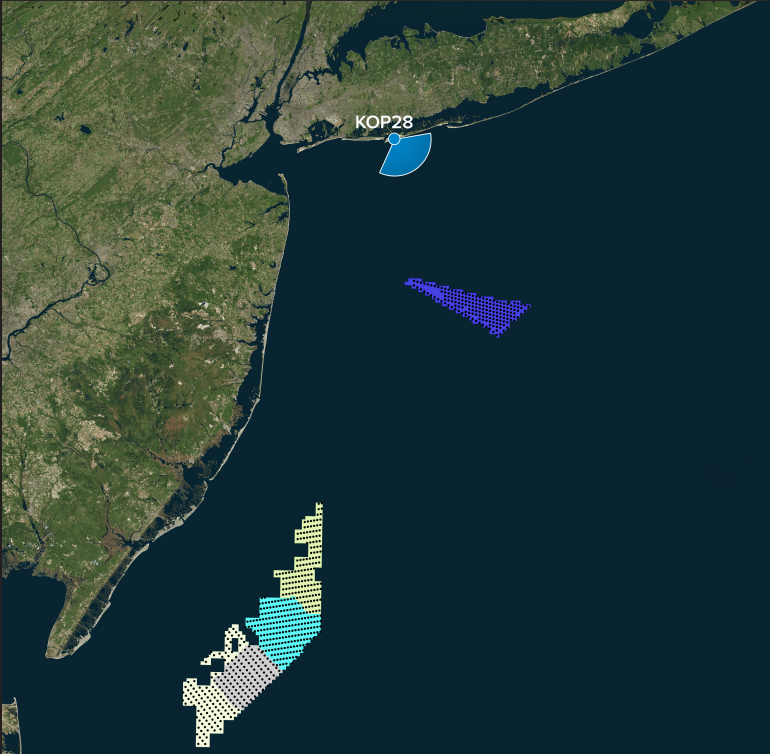
Photo Simulation Created Using  
TrueView™ Technology  
(Patent No.: US 6,184,906 B2)  
Provided by





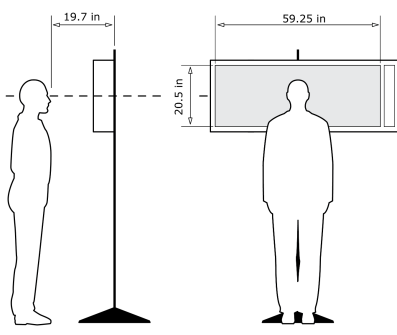
KOP 28, Jones Beach State Park, Late-Noon, Heading 143° - **Proposed View - External Leases - Predicted Visibility**

For on-screen display:  
Scale bar to be 4 inches wide  
Viewing distance 19.7 inches



Latitude: 40.58008  
Longitude: -73.556652  
Elevation of Viewpoint Position: 3  
Height of Camera Above Ground: 5.41  
Date of Photography: 4/02/2023 at 15:37  
Horizontal Field of View: 124°  
Vertical Field of View: 55°

CORRECT VIEWING OF TRUEVIEW™ PHOTO SIMULATIONS



NOTES:

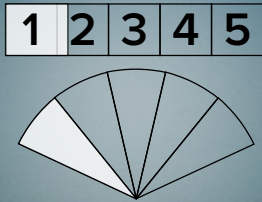
Viewpoint locations have been precision surveyed by  
**New York City Land Surveyors PC**  
63 Montgomery Avenue  
Staten Island NY 10301

Heights are above mean sea level.  
Structure design and placement are subject to final engineering.  
No part of this photo simulation shall be altered in any way.

Photo Simulation Created Using  
TrueView™ Technology  
(Patent No.: US 6,184,906 B2)  
Provided by

4/02/2023 at 15:37 - KOP 28





For on-screen display:  
Scale bar to be 4 inches wide  
Viewing distance 19.7 inches





For on-screen display:  
Scale bar to be 4 inches wide  
Viewing distance 19.7 inches





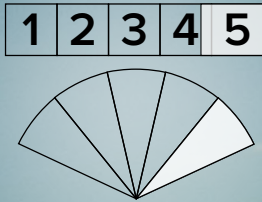
For on-screen display:  
Scale bar to be 4 inches wide  
Viewing distance 19.7 inches





For on-screen display:  
Scale bar to be 4 inches wide  
Viewing distance 19.7 inches





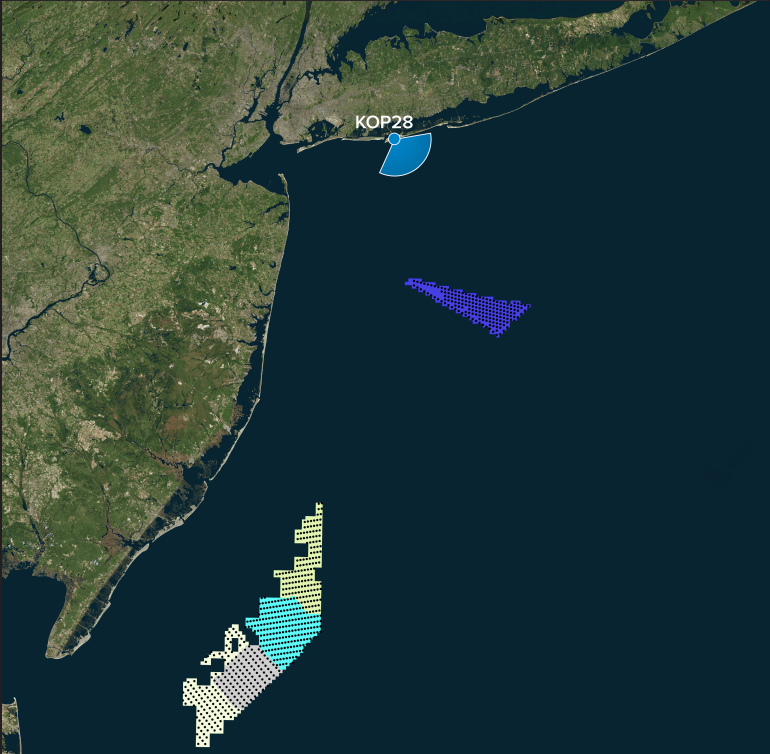
For on-screen display:  
Scale bar to be 4 inches wide  
Viewing distance 19.7 inches





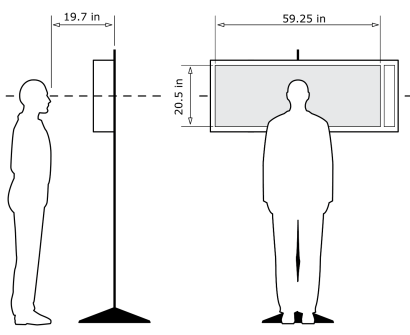
KOP 28, Jones Beach State Park, Late-Noon, Heading 143° - **Proposed View - External Leases - Maximum Visibility**

For on-screen display:  
Scale bar to be 4 inches wide  
Viewing distance 19.7 inches



Latitude: 40.58008  
Longitude: -73.556652  
Elevation of Viewpoint Position: 3  
Height of Camera Above Ground: 5.41  
Date of Photography: 4/02/2023 at 15:37  
Horizontal Field of View: 124°  
Vertical Field of View: 55°

CORRECT VIEWING OF TRUEVIEW™ PHOTO SIMULATIONS



NOTES:

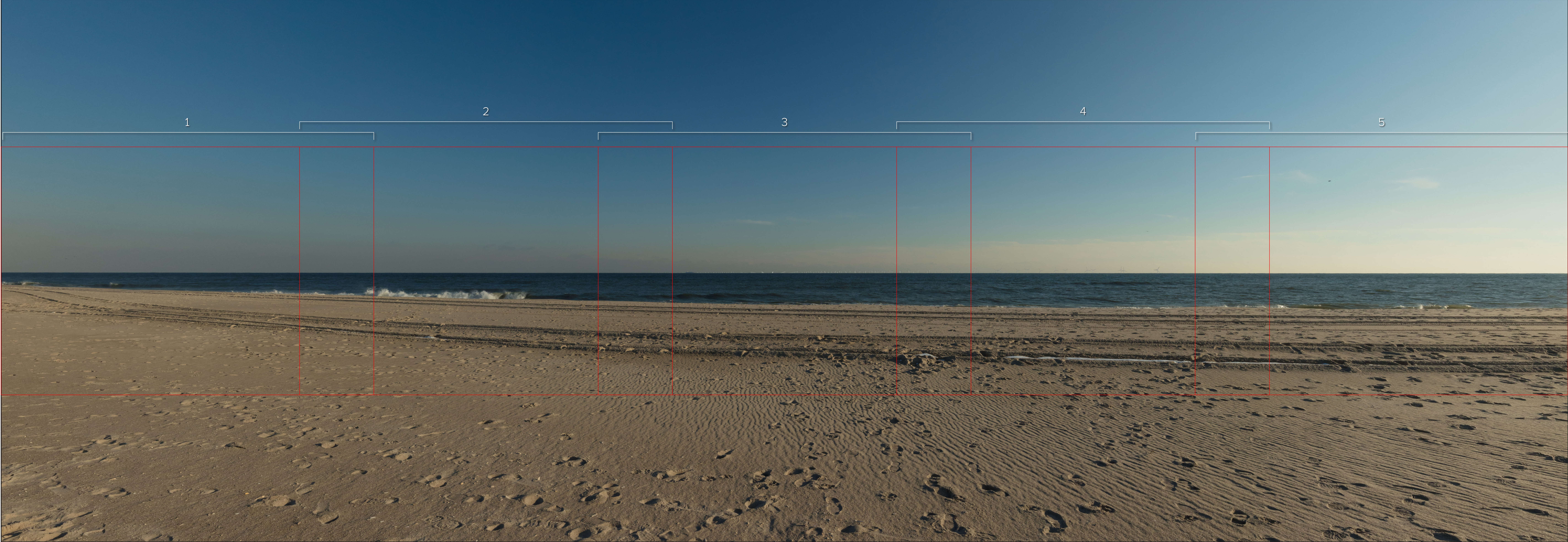
Viewpoint locations have been precision surveyed by  
**New York City Land Surveyors PC**  
63 Montgomery Avenue  
Staten Island NY 10301

Heights are above mean sea level.  
Structure design and placement are subject to final engineering.  
No part of this photo simulation shall be altered in any way.

Photo Simulation Created Using  
TrueView™ Technology  
(Patent No.: US 6,184,906 B2)  
Provided by

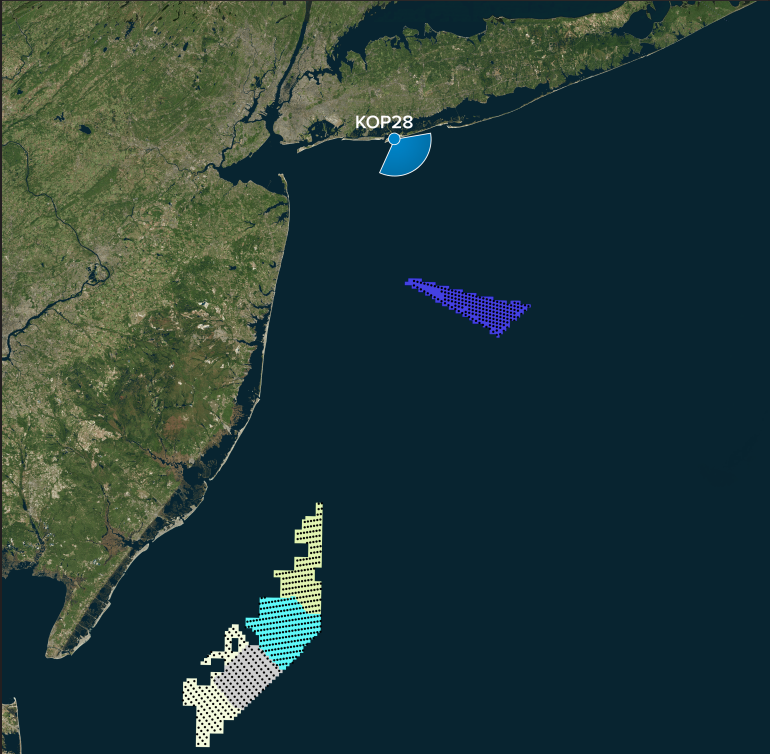
4/02/2023 at 15:37 - KOP 28





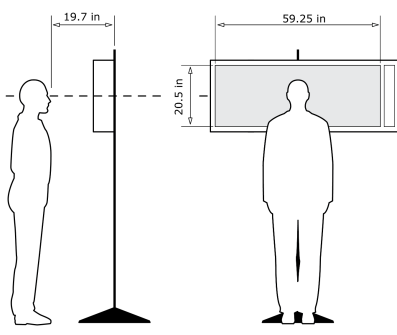
KOP 28, Jones Beach State Park, Late-Noon, Heading 143° - **Proposed View - External Leases - Maximum Visibility**

For on-screen display:  
Scale bar to be 4 inches wide  
Viewing distance 19.7 inches



Latitude: 40.58008  
Longitude: -73.556652  
Elevation of Viewpoint Position: 3  
Height of Camera Above Ground: 5.41  
Date of Photography: 4/02/2023 at 15:37  
Horizontal Field of View: 124°  
Vertical Field of View: 55°

CORRECT VIEWING OF TRUEVIEW™ PHOTO SIMULATIONS



NOTES:  
Viewpoint locations have been precision surveyed by  
**New York City Land Surveyors PC**  
63 Montgomery Avenue  
Staten Island NY 10301  
  
Heights are above mean sea level.  
Structure design and placement are subject to final engineering.  
No part of this photo simulation shall be altered in any way.

Photo Simulation Created Using  
TrueView™ Technology  
(Patent No.: US 6,184,906 B2)  
Provided by





For on-screen display:  
Scale bar to be 4 inches wide  
Viewing distance 19.7 inches





For on-screen display:  
Scale bar to be 4 inches wide  
Viewing distance 19.7 inches





For on-screen display:  
Scale bar to be 4 inches wide  
Viewing distance 19.7 inches





For on-screen display:  
Scale bar to be 4 inches wide  
Viewing distance 19.7 inches





For on-screen display:  
Scale bar to be 4 inches wide  
Viewing distance 19.7 inches