

Base Photographic Documentation

Date (MM/DD/YYYY):	3/02/2023
Time (24hr):	8:22
GPS Longitude:	-73.21843606
GPS Latitude:	40.63217722
Viewpoint Elevation (ft):	154.709
Camera Height (ft):	5.41
Camera Heading (°):	161
Camera Direction:	SSE

Camera Information

Camera Make & Model:	Canon EOS 5DS R
Camera Sensor Size:	36mm x 24mm
Lens Make & Model:	Sigma F1.4 DG HSM A023
Lens Focal Length:	20mm
Field of View:	65.47° (H) / 46.397° (V)

Sun And Weather Information

Sun Azimuth:	125.26
Sun Elevation:	12.79
Lighting Angle (On Turbines):	Left Lit
Weather Conditions:	Partly Cloudy
Maximum Visibility (NM):	25.21
Temperature (°F):	28
Temperature (°C):	-2.22
Humidity (%):	45

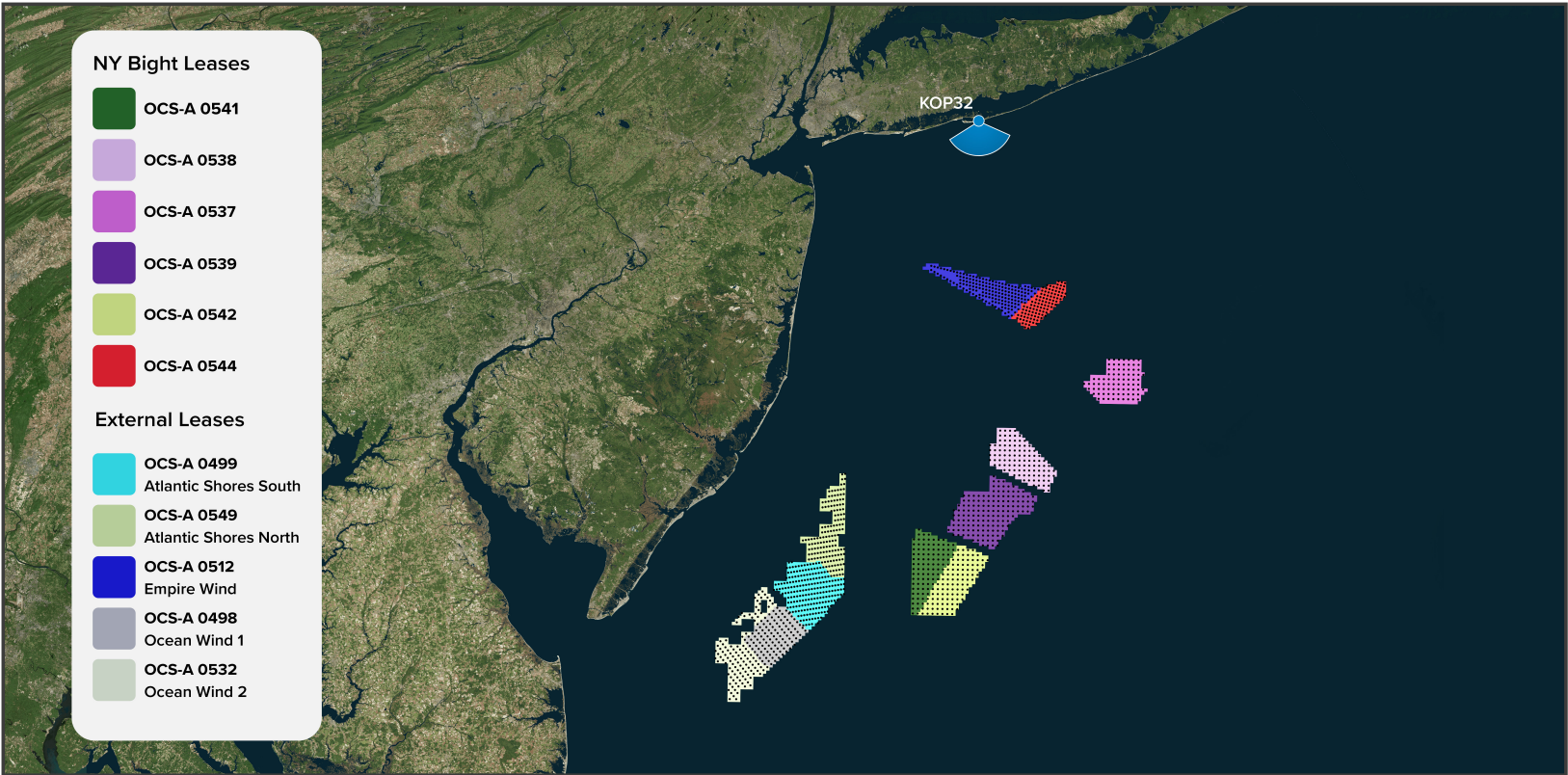
Viewing Instructions

11 x 17 inch Printed Display:	Distance is 19.7 inches (500mm)
On-Screen Display:	Distance is 19.7 inches (500mm)

Image Preview



Context Map



● Key Observation Point (KOP) ● Turbines

NY Bight Turbine Information - 1312ft (399.9m)

Lease Area	Distance to Nearest Turbine in Miles (km)	Turbines Visible		
		Blade Tip	Hub	Mid Tower
Total	-	400	223	110
OCS-A 0544	24.23 (39.00)	110	110	110
OCS-A 0537	46.18 (74.33)	235	13	0
OCS-A 0538	55.63 (89.52)	55	0	0
OCS-A 0539	67.14 (108.06)	0	0	0
OCS-A 0541	82.63 (132.98)	0	0	0
OCS-A 0542	84.43 (135.87)	0	0	0

Blade tip counts are a summation of only blade tips visible, only hubs visible, and mid-towers visible. Hub counts are a summation of only hubs visible and mid towers visible.

Turbine Visibility	Turbine Visibility & Percentage
Amount of Nearest Turbine Hidden in ft (m)	989.7 (301.7)
Percent of Nearest Turbine Hidden (%)	75%
Amount of Nearest Turbine Visible in ft (m)	322.3 (98.2)
Percent of Nearest Turbine Visible (%)	25%

NY Bight Turbine Specifications

Turbine Components	Measurements ft (m)
Rotor Diameter in ft (m)	1212 (369.4)
Total Height to Tip of Blade in ft (m)	1312 (399.9)
Hub Height in ft (m)	706 (215.2)
Support Structure Height in ft (m)	25 (7.6)
Service Platform in ft (m)	100 (30.5) x 200 (61.0) Steel Platform above MWS
Total Number of Turbines	1481

NY Bight Turbine Information - 853ft (260m)

Lease Area	Distance to Nearest Turbine in Miles (km)	Turbines Visible		
		Blade Tip	Hub	Mid Tower
Total	-	212	110	106
OCS-A 0544	24.23 (39.00)	110	110	106
OCS-A 0537	46.18 (74.33)	102	0	0
OCS-A 0538	55.63 (89.52)	0	0	0
OCS-A 0539	67.14 (108.06)	0	0	0
OCS-A 0541	82.63 (132.98)	0	0	0
OCS-A 0542	84.43 (135.87)	0	0	0

Blade tip counts are a summation of only blade tips visible, only hubs visible, and mid-towers visible. Hub counts are a summation of only hubs visible and mid towers visible.

Turbine Visibility	Turbine Visibility & Percentage
Amount of Nearest Turbine Hidden in ft (m)	853 (260)
Percent of Nearest Turbine Hidden (%)	100%
Amount of Nearest Turbine Visible in ft (m)	0.0 (0.0)
Percent of Nearest Turbine Visible (%)	0.0%

NY Bight Turbine Specifications

Turbine Components	Measurements ft (m)
Rotor Diameter in ft (m)	722 (220.1)
Total Height to Tip of Blade in ft (m)	853 (260)
Hub Height in ft (m)	361 (110)
Support Structure Height in ft (m)	25 (7.6)
Service Platform in ft (m)	100 (30.5) x 200 (61.0) Steel Platform above MWS
Total Number of Turbines	1481

External Turbine Information

Lease Area	Distance to Nearest Turbine in Miles (km)	Turbines Visible		
		Blade Tip	Hub	Mid Tower
Total	-	174	174	N/A
OCS-A 0499	N/A	0	0	N/A
OCS-A 0549	N/A	0	0	N/A
OCS-A 0512	21.7 (35.0)	174	174	N/A
OCS-A 0498	N/A	0	0	N/A
OCS-A 0532	N/A	0	0	N/A

Cumulative Turbine Visibility
(Total WTG Count for NY Bight + External Leases)

1312ft (399.9m)			853ft (260m)		
Blade Tip	Hub	Mid Tower	Blade Tip	Hub	Mid Tower
574	297	110	386	284	106

The cumulative mid tower counts for both turbine heights are conservative values due to having no mid tower data for the external leases.

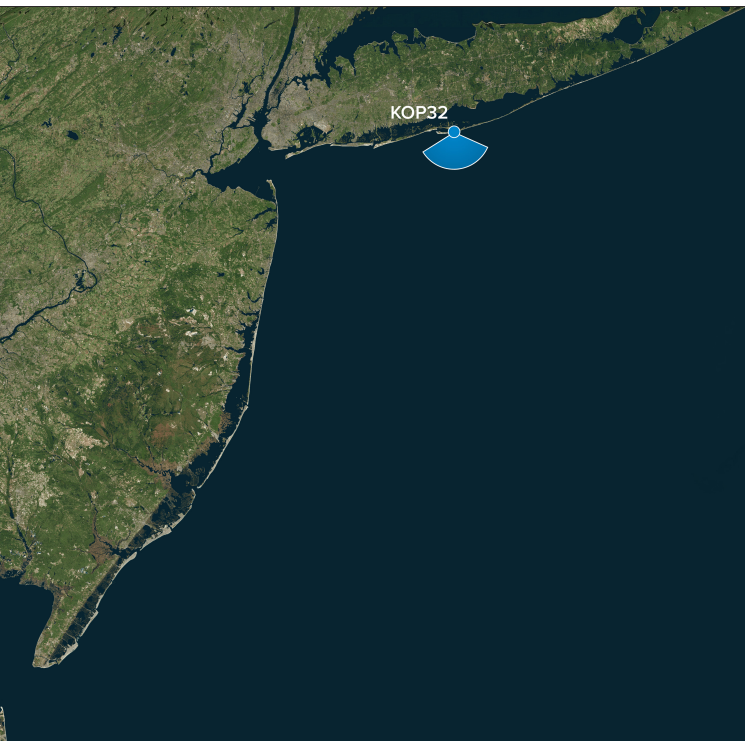
External Turbine Specifications

Lease Area	Rotor Diameter in ft (m)	Total Height to Tip of Blade in ft (m)	Hub Height in ft (m)	Support Structure Height in ft (m)
OCS-A 0499	918.6 (279.9)	1049 (319.7)	577 (176)	25 (7.6)
OCS-A 0549	918.6 (279.9)	1049 (319.7)	577 (176)	25 (7.6)
OCS-A 0512	853 (259.9)	951 (290)	525 (160)	25 (7.6)
OCS-A 0498	788 (240.1)	906 (276)	512 (156)	25 (7.6)
OCS-A 0532	788 (240.1)	906 (276)	512 (156)	25 (7.6)



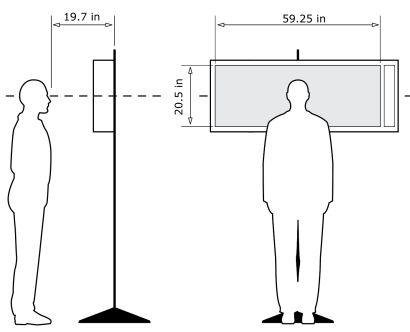
KOP 32, Fire Island Lighthouse - Top, Morning, Heading 161° - Existing View

For on-screen display:
Scale bar to be 4 inches wide
Viewing distance 19.7 inches



Latitude: 40.63217722
Longitude: -73.21843606
Elevation of Viewpoint Position: 154.709
Height of Camera Above Ground: 5.41
Date of Photography: 3/02/2023 at 8:22
Horizontal Field of View: 124°
Vertical Field of View: 55°

CORRECT VIEWING OF TRUEVIEW™ PHOTO SIMULATIONS



NOTES:

Viewpoint locations have been precision surveyed by
New York City Land Surveyors PC
63 Montgomery Avenue
Staten Island NY 10301

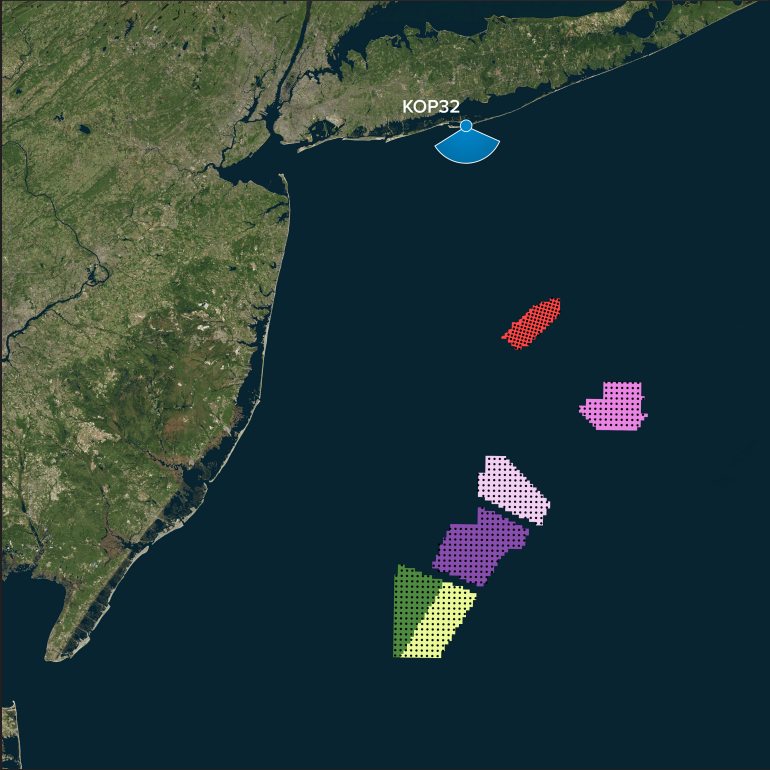
Heights are above mean sea level.
Structure design and placement are subject to final engineering.
No part of this photo simulation shall be altered in any way.

Photo Simulation Created Using
TrueView™ Technology
(Patent No.: US 6,184,906 B2)
Provided by



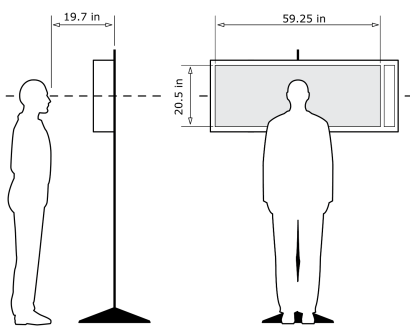
KOP 32, Fire Island Lighthouse - Top, Morning, Heading 161° - **Proposed View - NY Bight Leases (853ft) - Predicted Visibility**

For on-screen display:
Scale bar to be 4 inches wide
Viewing distance 19.7 inches



Latitude: 40.63217722
Longitude: -73.21843606
Elevation of Viewpoint Position: 154.709
Height of Camera Above Ground: 5.41
Date of Photography: 3/02/2023 at 8:22
Horizontal Field of View: 124°
Vertical Field of View: 55°
Nearest Turbine: 24.2mi (39.0km) (OCS-A 0544)
Furthest Visible Turbine: 51.2mi (82.4km) (OCS-A 0537)
Horizontal Field of View the Projects Occupy: 34.7°

CORRECT VIEWING OF TRUEVIEW™ PHOTO SIMULATIONS



NOTES:

Viewpoint locations have been precision surveyed by
New York City Land Surveyors PC
63 Montgomery Avenue
Staten Island NY 10301

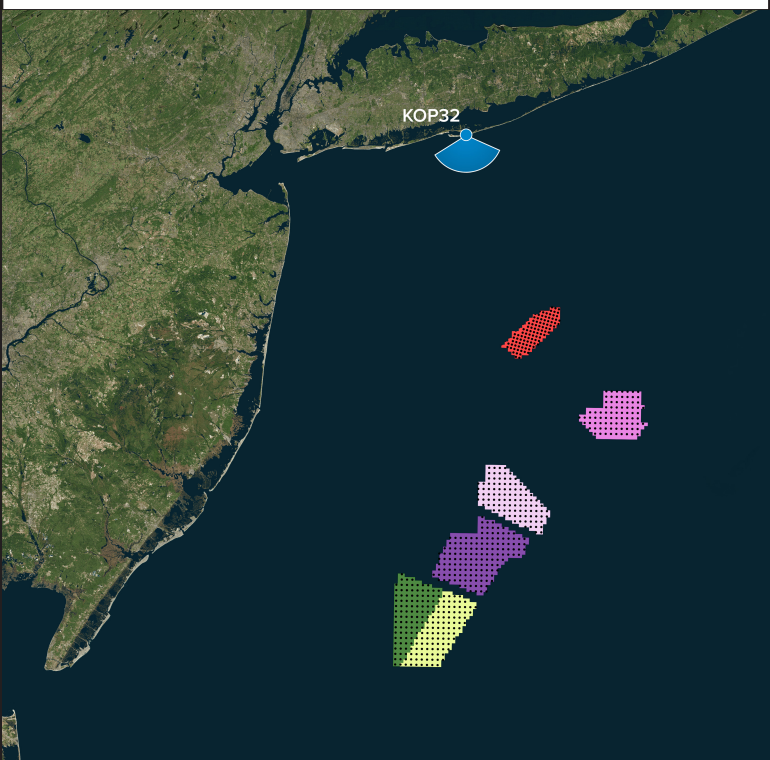
Heights are above mean sea level.
Structure design and placement are subject to final engineering.
No part of this photo simulation shall be altered in any way.

Photo Simulation Created Using
TrueView™ Technology
(Patent No.: US 6,184,906 B2)
Provided by



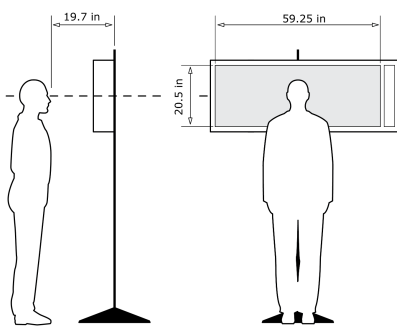
KOP 32, Fire Island Lighthouse - Top, Morning, Heading 161° - **Proposed View - NY Bight Leases (853ft) - Predicted Visibility**

For on-screen display:
Scale bar to be 4 inches wide
Viewing distance 19.7 inches



Latitude: 40.63217722
Longitude: -73.21843606
Elevation of Viewpoint Position: 154.709
Height of Camera Above Ground: 5.41
Date of Photography: 3/02/2023 at 8:22
Horizontal Field of View: 124°
Vertical Field of View: 55°
Nearest Turbine: 24.2mi (39.0km) (OCS-A 0544)
Furthest Visible Turbine: 51.2mi (82.4km) (OCS-A 0537)
Horizontal Field of View the Projects Occupy: 34.7°

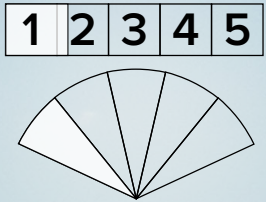
CORRECT VIEWING OF TRUEVIEW™ PHOTO SIMULATIONS



NOTES:
Viewpoint locations have been precision surveyed by
New York City Land Surveyors PC
63 Montgomery Avenue
Staten Island NY 10301

Heights are above mean sea level.
Structure design and placement are subject to final engineering.
No part of this photo simulation shall be altered in any way.

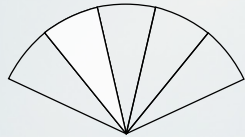
Photo Simulation Created Using
TrueView™ Technology
(Patent No.: US 6,184,906 B2)
Provided by



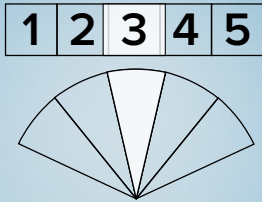
For on-screen display:
Scale bar to be 4 inches wide
Viewing distance 19.7 inches



1 2 3 4 5



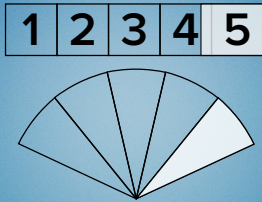
For on-screen display:
Scale bar to be 4 inches wide
Viewing distance 19.7 inches



For on-screen display:
Scale bar to be 4 inches wide
Viewing distance 19.7 inches



For on-screen display:
Scale bar to be 4 inches wide
Viewing distance 19.7 inches

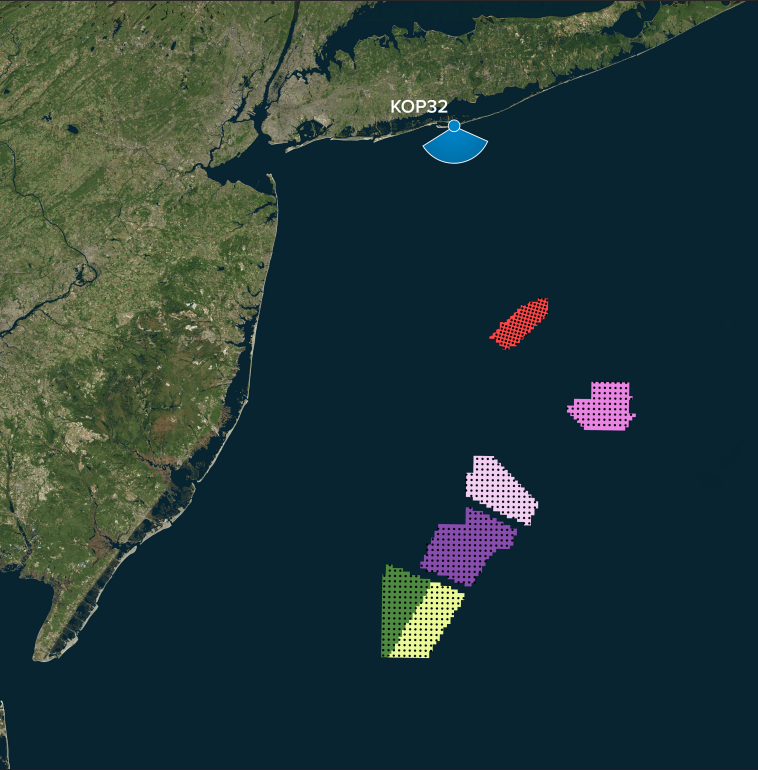


For on-screen display:
Scale bar to be 4 inches wide
Viewing distance 19.7 inches



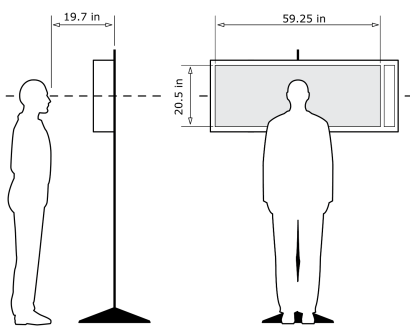
KOP 32, Fire Island Lighthouse - Top, Morning, Heading 161° - **Proposed View - NY Bight Leases (853ft) - Maximum Visibility**

For on-screen display:
Scale bar to be 4 inches wide
Viewing distance 19.7 inches



Latitude: 40.63217722
Longitude: -73.21843606
Elevation of Viewpoint Position: 154.709
Height of Camera Above Ground: 5.41
Date of Photography: 3/02/2023 at 8:22
Horizontal Field of View: 124°
Vertical Field of View: 55°
Nearest Turbine: 24.2mi (39.0km) (OCS-A 0544)
Furthest Visible Turbine: 51.2mi (82.4km) (OCS-A 0537)
Horizontal Field of View the Projects Occupy: 34.7°

CORRECT VIEWING OF TRUEVIEW™ PHOTO SIMULATIONS



NOTES:

Viewpoint locations have been precision surveyed by
New York City Land Surveyors PC
63 Montgomery Avenue
Staten Island NY 10301

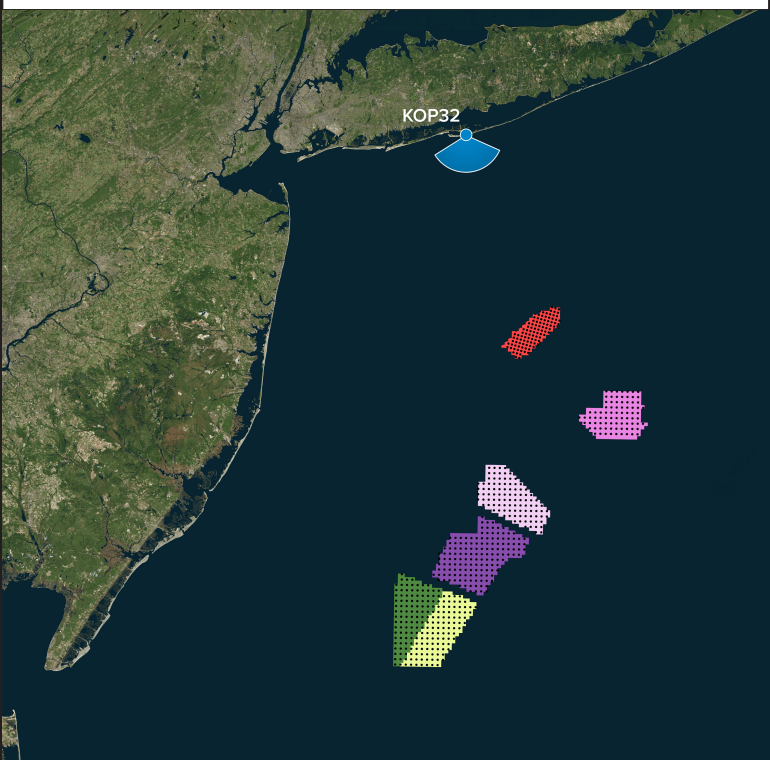
Heights are above mean sea level.
Structure design and placement are subject to final engineering.
No part of this photo simulation shall be altered in any way.

Photo Simulation Created Using
TrueView™ Technology
(Patent No.: US 6,184,906 B2)
Provided by



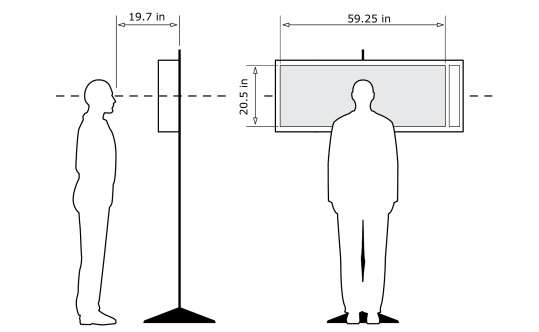
KOP 32, Fire Island Lighthouse - Top, Morning, Heading 161° - **Proposed View - NY Bight Leases (853ft) - Maximum Visibility**

For on-screen display:
Scale bar to be 4 inches wide
Viewing distance 19.7 inches



Latitude: 40.63217722
Longitude: -73.21843606
Elevation of Viewpoint Position: 154.709
Height of Camera Above Ground: 5.41
Date of Photography: 3/02/2023 at 8:22
Horizontal Field of View: 124°
Vertical Field of View: 55°
Nearest Turbine: 24.2mi (39.0km) (OCS-A 0544)
Furthest Visible Turbine: 51.2mi (82.4km) (OCS-A 0537)
Horizontal Field of View the Projects Occupy: 34.7°

CORRECT VIEWING OF TRUEVIEW™ PHOTO SIMULATIONS

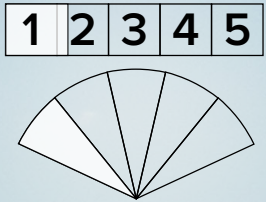


NOTES:

Viewpoint locations have been precision surveyed by
New York City Land Surveyors PC
63 Montgomery Avenue
Staten Island NY 10301

Heights are above mean sea level.
Structure design and placement are subject to final engineering.
No part of this photo simulation shall be altered in any way.

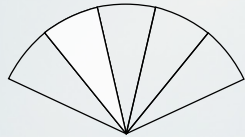
Photo Simulation Created Using
TrueView™ Technology
(Patent No.: US 6,184,906 B2)
Provided by



For on-screen display:
Scale bar to be 4 inches wide
Viewing distance 19.7 inches



1 2 3 4 5



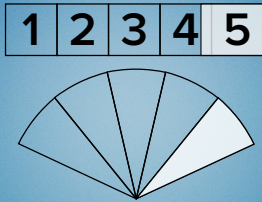
For on-screen display:
Scale bar to be 4 inches wide
Viewing distance 19.7 inches



For on-screen display:
Scale bar to be 4 inches wide
Viewing distance 19.7 inches



For on-screen display:
Scale bar to be 4 inches wide
Viewing distance 19.7 inches

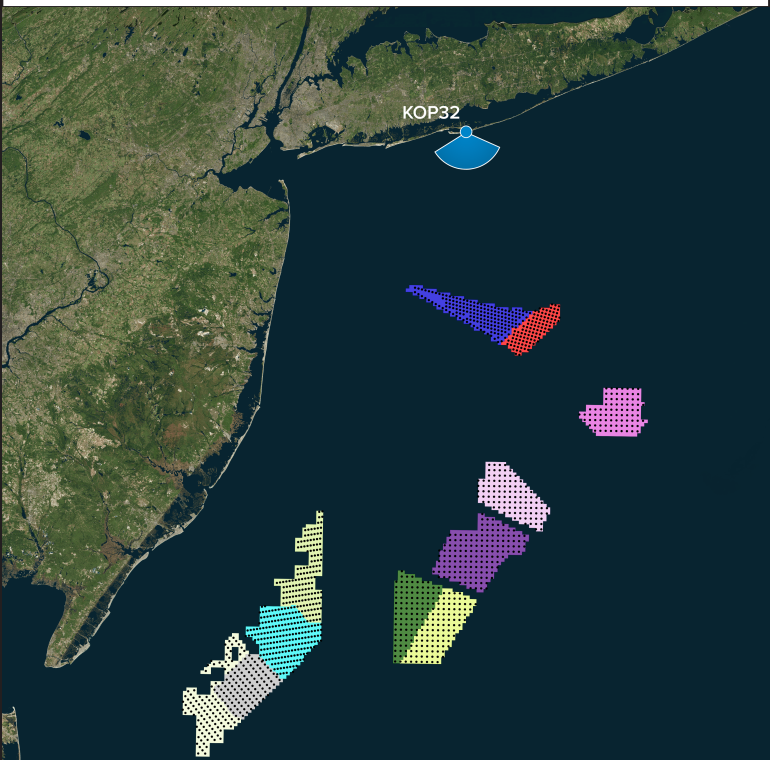


For on-screen display:
Scale bar to be 4 inches wide
Viewing distance 19.7 inches



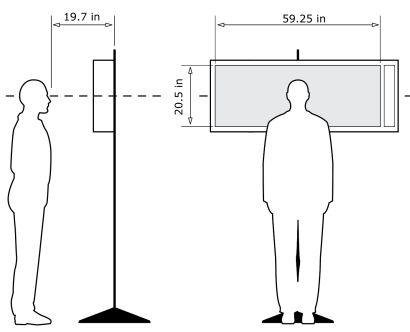
KOP 32, Fire Island Lighthouse - Top, Morning, Heading 161° - **Proposed View - Cumulative - External Leases and NY Bight Leases (853ft) - Predicted Visibility**

For on-screen display:
Scale bar to be 4 inches wide
Viewing distance 19.7 inches



Latitude: 40.63217722
Longitude: -73.21843606
Elevation of Viewpoint Position: 154.709
Height of Camera Above Ground: 5.41
Date of Photography: 3/02/2023 at 8:22
Horizontal Field of View: 124°
Vertical Field of View: 55°
Nearest Turbine: 21.7mi (34.9km) (OCS-A 0512)
Furthest Visible Turbine: 51.2mi (82.4km) (OCS-A 0537)
Horizontal Field of View the Projects Occupy: 82.8°

CORRECT VIEWING OF TRUEVIEW™ PHOTO SIMULATIONS



NOTES:
Viewpoint locations have been precision surveyed by
New York City Land Surveyors PC
63 Montgomery Avenue
Staten Island NY 10301

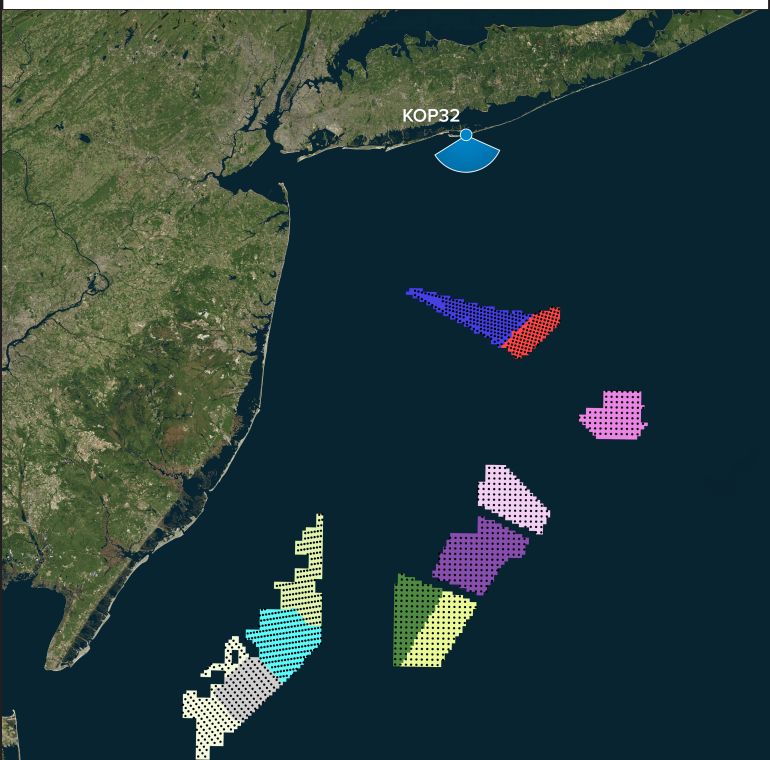
Heights are above mean sea level.
Structure design and placement are subject to final engineering.
No part of this photo simulation shall be altered in any way.

Photo Simulation Created Using
TrueView™ Technology
(Patent No.: US 6,184,906 B2)
Provided by



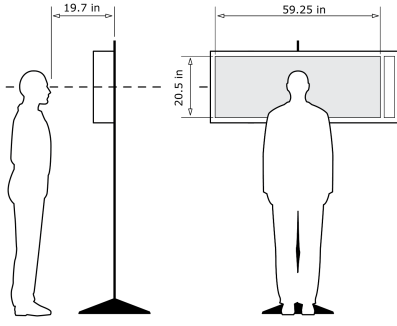
KOP 32, Fire Island Lighthouse - Top, Morning, Heading 161° - **Proposed View - Cumulative - External Leases and NY Bight Leases (853ft) - Predicted Visibility**

For on-screen display:
Scale bar to be 4 inches wide
Viewing distance 19.7 inches



Latitude: 40.63217722
Longitude: -73.21843606
Elevation of Viewpoint Position: 154.709
Height of Camera Above Ground: 5.41
Date of Photography: 3/02/2023 at 8:22
Horizontal Field of View: 124°
Vertical Field of View: 55°
Nearest Turbine: 21.7mi (34.9km) (OCS-A 0512)
Furthest Visible Turbine: 51.2mi (82.4km) (OCS-A 0537)
Horizontal Field of View the Projects Occupy: 82.8°

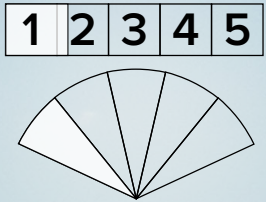
CORRECT VIEWING OF TRUEVIEW™ PHOTO SIMULATIONS



NOTES:
Viewpoint locations have been precision surveyed by
New York City Land Surveyors PC
63 Montgomery Avenue
Staten Island NY 10301

Heights are above mean sea level.
Structure design and placement are subject to final engineering.
No part of this photo simulation shall be altered in any way.

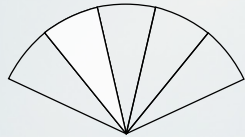
Photo Simulation Created Using
TrueView™ Technology
(Patent No.: US 8,184,906 B2)
Provided by



For on-screen display:
Scale bar to be 4 inches wide
Viewing distance 19.7 inches



1 2 3 4 5



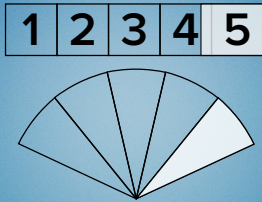
For on-screen display:
Scale bar to be 4 inches wide
Viewing distance 19.7 inches



For on-screen display:
Scale bar to be 4 inches wide
Viewing distance 19.7 inches



For on-screen display:
Scale bar to be 4 inches wide
Viewing distance 19.7 inches

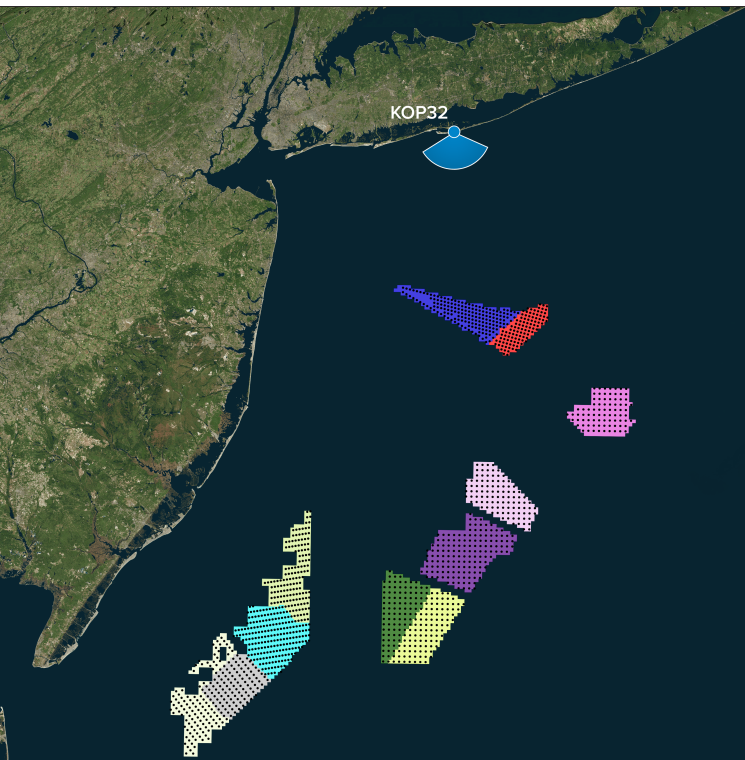


For on-screen display:
Scale bar to be 4 inches wide
Viewing distance 19.7 inches



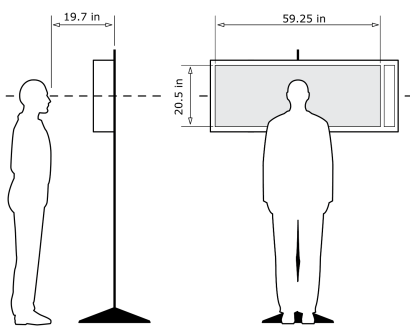
KOP 32, Fire Island Lighthouse - Top, Morning, Heading 161° - **Proposed View - Cumulative - External Leases and NY Bight Leases (853ft) - Maximum Visibility**

For on-screen display:
Scale bar to be 4 inches wide
Viewing distance 19.7 inches



Latitude: 40.63217722
Longitude: -73.21843606
Elevation of Viewpoint Position: 154.709
Height of Camera Above Ground: 5.41
Date of Photography: 3/02/2023 at 8:22
Horizontal Field of View: 124°
Vertical Field of View: 55°
Nearest Turbine: 21.7mi (34.9km) (OCS-A 0512)
Furthest Visible Turbine: 51.2mi (82.4km) (OCS-A 0537)
Horizontal Field of View the Projects Occupy: 82.8°

CORRECT VIEWING OF TRUEVIEW™ PHOTO SIMULATIONS



NOTES:

Viewpoint locations have been precision surveyed by
New York City Land Surveyors PC
63 Montgomery Avenue
Staten Island NY 10301

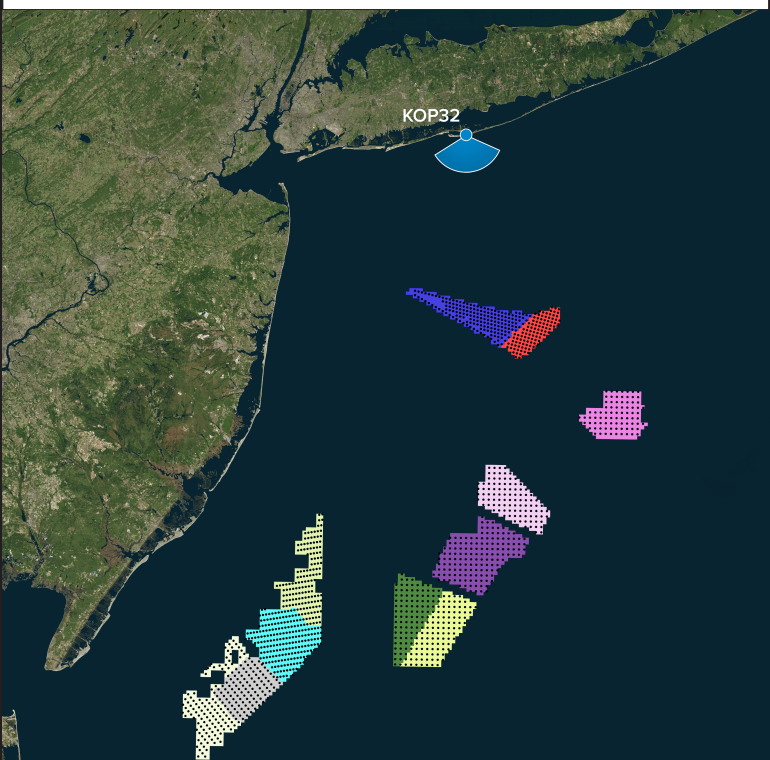
Heights are above mean sea level.
Structure design and placement are subject to final engineering.
No part of this photo simulation shall be altered in any way.

Photo Simulation Created Using
TrueView™ Technology
(Patent No.: US 6,184,906 B2)
Provided by



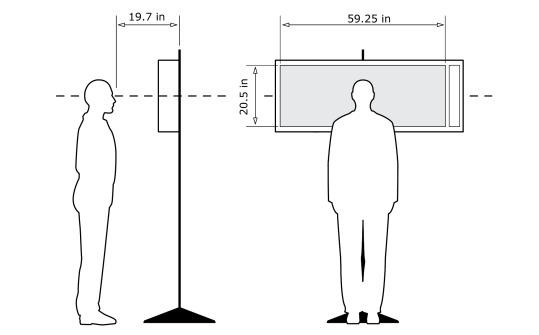
KOP 32, Fire Island Lighthouse - Top, Morning, Heading 161° - **Proposed View - Cumulative - External Leases and NY Bight Leases (853ft) - Maximum Visibility**

For on-screen display:
Scale bar to be 4 inches wide
Viewing distance 19.7 inches



Latitude: 40.63217722
Longitude: -73.21843606
Elevation of Viewpoint Position: 154.709
Height of Camera Above Ground: 5.41
Date of Photography: 3/02/2023 at 8:22
Horizontal Field of View: 124°
Vertical Field of View: 55°
Nearest Turbine: 21.7mi (34.9km) (OCS-A 0512)
Furthest Visible Turbine: 51.2mi (82.4km) (OCS-A 0537)
Horizontal Field of View the Projects Occupy: 82.8°

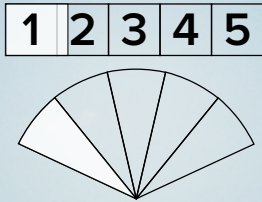
CORRECT VIEWING OF TRUEVIEW™ PHOTO SIMULATIONS



NOTES:
Viewpoint locations have been precision surveyed by
New York City Land Surveyors PC
63 Montgomery Avenue
Staten Island NY 10301

Heights are above mean sea level.
Structure design and placement are subject to final engineering.
No part of this photo simulation shall be altered in any way.

Photo Simulation Created Using
TrueView™ Technology
(Patent No.: US 6,184,906 B2)
Provided by



For on-screen display:
Scale bar to be 4 inches wide
Viewing distance 19.7 inches



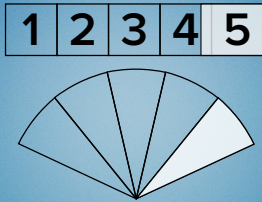
For on-screen display:
Scale bar to be 4 inches wide
Viewing distance 19.7 inches



For on-screen display:
Scale bar to be 4 inches wide
Viewing distance 19.7 inches



For on-screen display:
Scale bar to be 4 inches wide
Viewing distance 19.7 inches

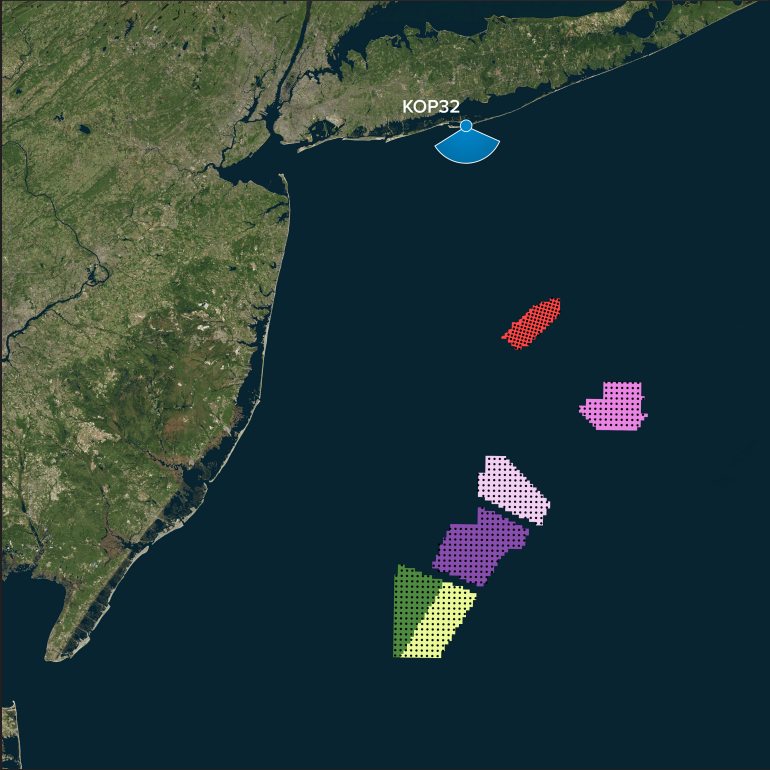


For on-screen display:
Scale bar to be 4 inches wide
Viewing distance 19.7 inches



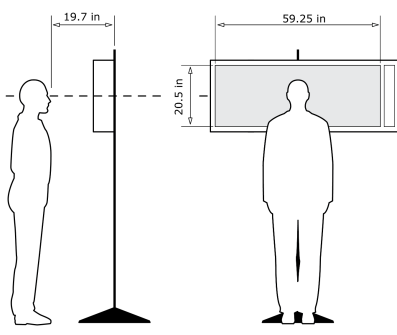
KOP 32, Fire Island Lighthouse - Top, Morning, Heading 161° - **Proposed View - NY Bight Leases (1312ft) - Predicted Visibility**

For on-screen display:
Scale bar to be 4 inches wide
Viewing distance 19.7 inches



Latitude: 40.63217722
Longitude: -73.21843606
Elevation of Viewpoint Position: 154.709
Height of Camera Above Ground: 5.41
Date of Photography: 3/02/2023 at 8:22
Horizontal Field of View: 124°
Vertical Field of View: 55°
Nearest Turbine: 24.2mi (39.0km) (OCS-A 0544)
Furthest Visible Turbine: 59.8mi (96.2km) (OCS-A 0538)
Horizontal Field of View the Projects Occupy: 411°

CORRECT VIEWING OF TRUEVIEW™ PHOTO SIMULATIONS



NOTES:

Viewpoint locations have been precision surveyed by
New York City Land Surveyors PC
63 Montgomery Avenue
Staten Island NY 10301

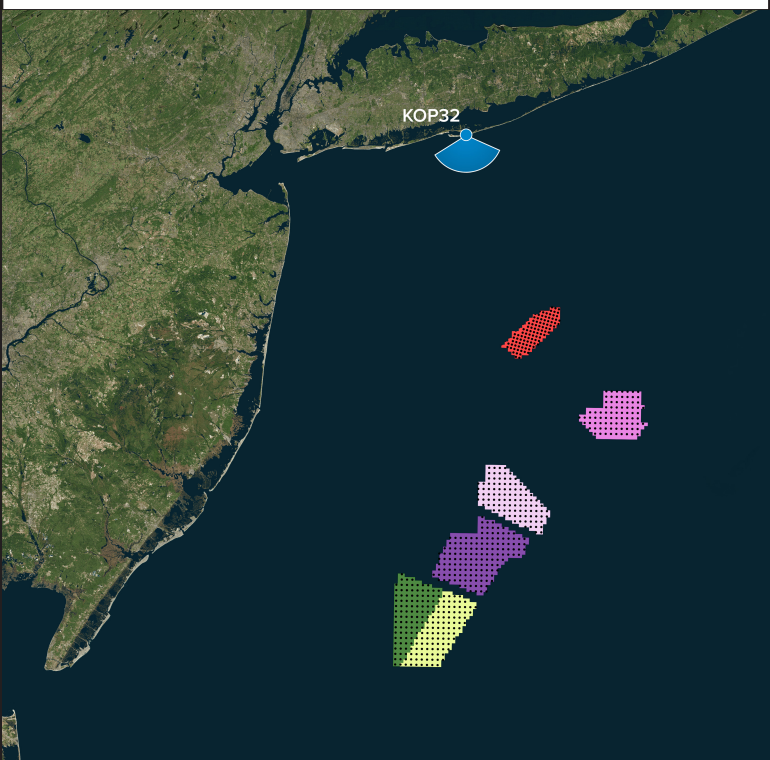
Heights are above mean sea level.
Structure design and placement are subject to final engineering.
No part of this photo simulation shall be altered in any way.

Photo Simulation Created Using
TrueView™ Technology
(Patent No.: US 6,184,906 B2)
Provided by



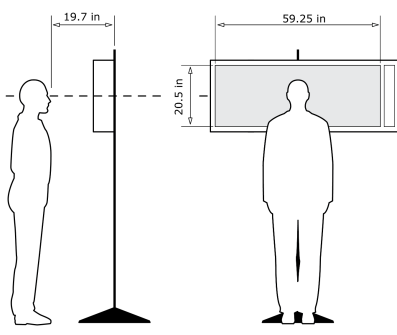
KOP 32, Fire Island Lighthouse - Top, Morning, Heading 161° - **Proposed View - NY Bight Leases (1312ft) - Predicted Visibility**

For on-screen display:
Scale bar to be 4 inches wide
Viewing distance 19.7 inches



Latitude: 40.63217722
Longitude: -73.21843606
Elevation of Viewpoint Position: 154.709
Height of Camera Above Ground: 5.41
Date of Photography: 3/02/2023 at 8:22
Horizontal Field of View: 124°
Vertical Field of View: 55°
Nearest Turbine: 24.2mi (39.0km) (OCS-A 0544)
Furthest Visible Turbine: 59.8mi (96.2km) (OCS-A 0538)
Horizontal Field of View the Projects Occupy: 411°

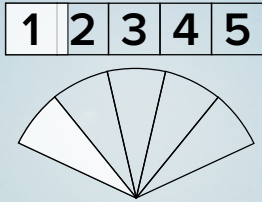
CORRECT VIEWING OF TRUEVIEW™ PHOTO SIMULATIONS



NOTES:
Viewpoint locations have been precision surveyed by
New York City Land Surveyors PC
63 Montgomery Avenue
Staten Island NY 10301

Heights are above mean sea level.
Structure design and placement are subject to final engineering.
No part of this photo simulation shall be altered in any way.

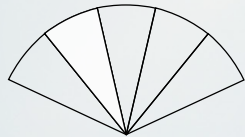
Photo Simulation Created Using
TrueView™ Technology
(Patent No.: US 6,184,906 B2)
Provided by



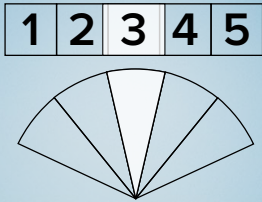
For on-screen display:
Scale bar to be 4 inches wide
Viewing distance 19.7 inches



1 2 3 4 5



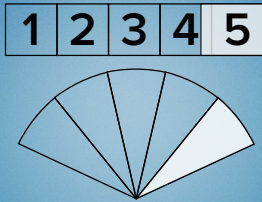
For on-screen display:
Scale bar to be 4 inches wide
Viewing distance 19.7 inches



For on-screen display:
Scale bar to be 4 inches wide
Viewing distance 19.7 inches



For on-screen display:
Scale bar to be 4 inches wide
Viewing distance 19.7 inches

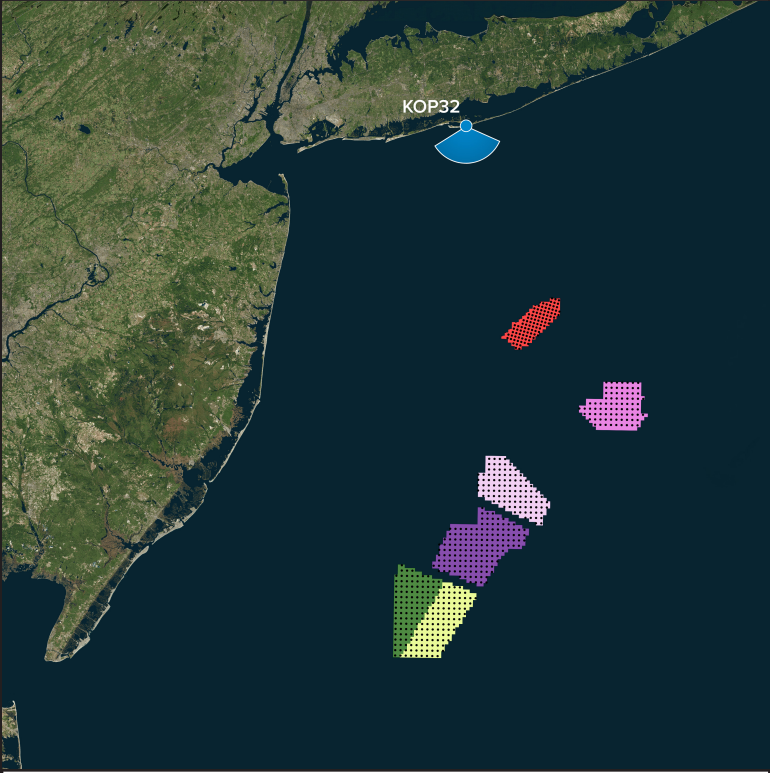


For on-screen display:
Scale bar to be 4 inches wide
Viewing distance 19.7 inches



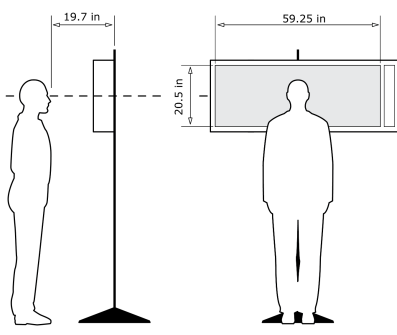
KOP 32, Fire Island Lighthouse - Top, Morning, Heading 161° - **Proposed View - NY Bight Leases (1312ft) - Maximum Visibility**

For on-screen display:
Scale bar to be 4 inches wide
Viewing distance 19.7 inches



Latitude: 40.63217722
Longitude: -73.21843606
Elevation of Viewpoint Position: 154.709
Height of Camera Above Ground: 5.41
Date of Photography: 3/02/2023 at 8:22
Horizontal Field of View: 124°
Vertical Field of View: 55°
Nearest Turbine: 24.2mi (39.0km) (OCS-A 0544)
Furthest Visible Turbine: 59.8mi (96.2km) (OCS-A 0538)
Horizontal Field of View the Projects Occupy: 411°

CORRECT VIEWING OF TRUEVIEW™ PHOTO SIMULATIONS



NOTES:

Viewpoint locations have been precision surveyed by
New York City Land Surveyors PC
63 Montgomery Avenue
Staten Island NY 10301

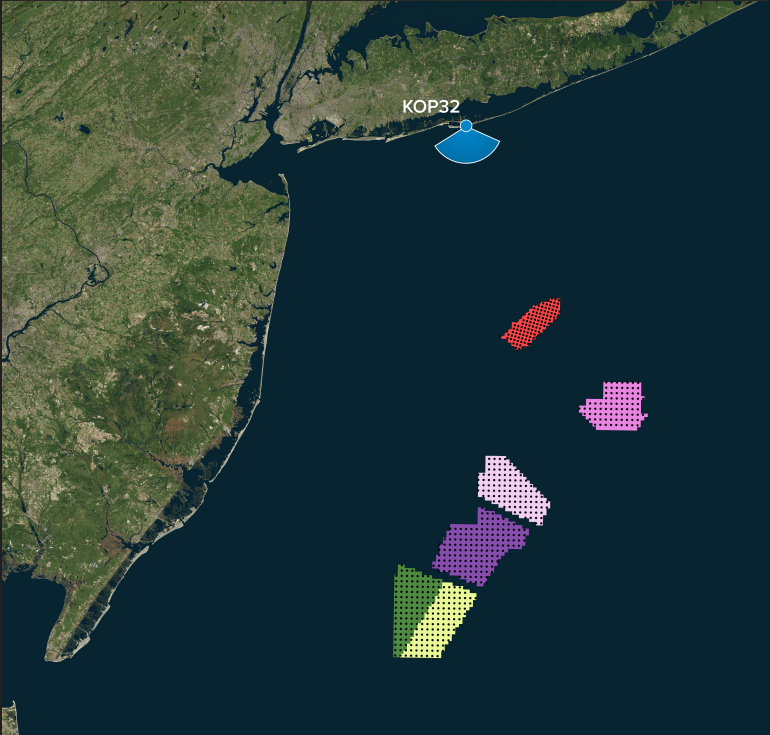
Heights are above mean sea level.
Structure design and placement are subject to final engineering.
No part of this photo simulation shall be altered in any way.

Photo Simulation Created Using
TrueView™ Technology
(Patent No.: US 6,184,906 B2)
Provided by



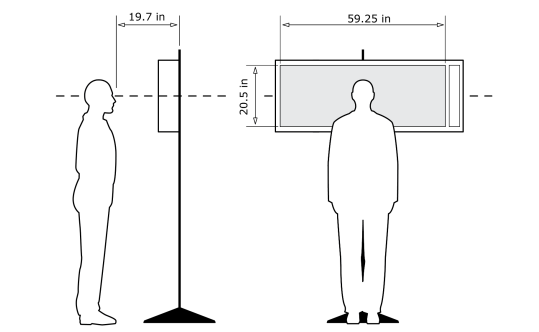
KOP 32, Fire Island Lighthouse - Top, Morning, Heading 161° - **Proposed View - NY Bight Leases (1312ft) - Maximum Visibility**

For on-screen display:
Scale bar to be 4 inches wide
Viewing distance 19.7 inches



Latitude: 40.63217722
Longitude: -73.21843606
Elevation of Viewpoint Position: 154.709
Height of Camera Above Ground: 5.41
Date of Photography: 3/02/2023 at 8:22
Horizontal Field of View: 124°
Vertical Field of View: 55°
Nearest Turbine: 24.2mi (39.0km) (OCS-A 0544)
Furthest Visible Turbine: 59.8mi (96.2km) (OCS-A 0538)
Horizontal Field of View the Projects Occupy: 411°

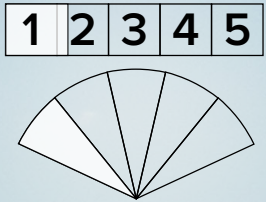
CORRECT VIEWING OF TRUEVIEW™ PHOTO SIMULATIONS



NOTES:
Viewpoint locations have been precision surveyed by
New York City Land Surveyors PC
63 Montgomery Avenue
Staten Island NY 10301

Heights are above mean sea level.
Structure design and placement are subject to final engineering.
No part of this photo simulation shall be altered in any way.

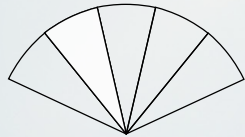
Photo Simulation Created Using
TrueView™ Technology
(Patent No.: US 6,184,906 B2)
Provided by



For on-screen display:
Scale bar to be 4 inches wide
Viewing distance 19.7 inches



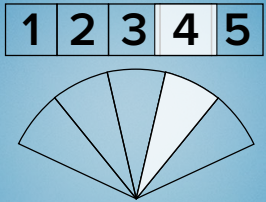
1 2 3 4 5



For on-screen display:
Scale bar to be 4 inches wide
Viewing distance 19.7 inches



For on-screen display:
Scale bar to be 4 inches wide
Viewing distance 19.7 inches



For on-screen display:
Scale bar to be 4 inches wide
Viewing distance 19.7 inches

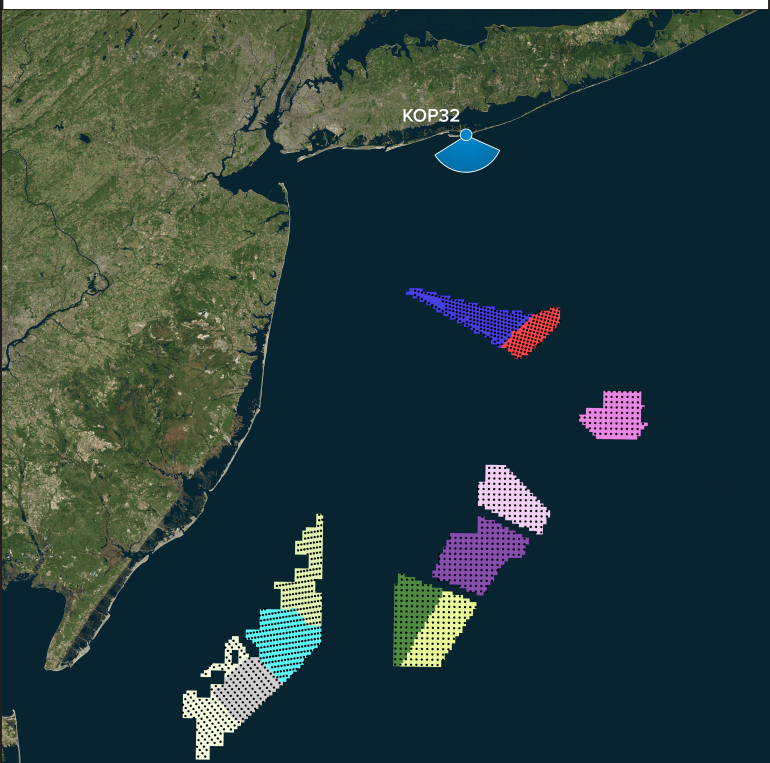


For on-screen display:
Scale bar to be 4 inches wide
Viewing distance 19.7 inches



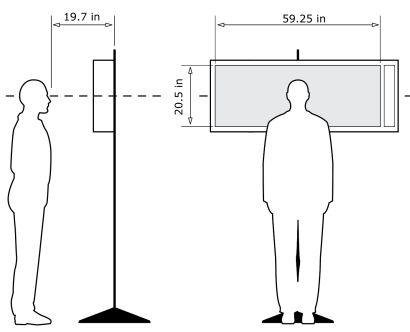
KOP 32, Fire Island Lighthouse - Top, Morning, Heading 161° - **Proposed View - Cumulative - External Leases and NY Bight Leases (1312ft) - Predicted Visibility**

For on-screen display:
Scale bar to be 4 inches wide
Viewing distance 19.7 inches



Latitude: 40.63217722
Longitude: -73.21843606
Elevation of Viewpoint Position: 154.709
Height of Camera Above Ground: 5.41
Date of Photography: 3/02/2023 at 8:22
Horizontal Field of View: 124°
Vertical Field of View: 55°
Nearest Turbine: 21.7mi (34.9km) (OCS-A 0512)
Furthest Visible Turbine: 59.8mi (96.2km) (OCS-A 0538)
Horizontal Field of View the Projects Occupy: 82.8°

CORRECT VIEWING OF TRUEVIEW™ PHOTO SIMULATIONS



NOTES:

Viewpoint locations have been precision surveyed by
New York City Land Surveyors PC
63 Montgomery Avenue
Staten Island NY 10301

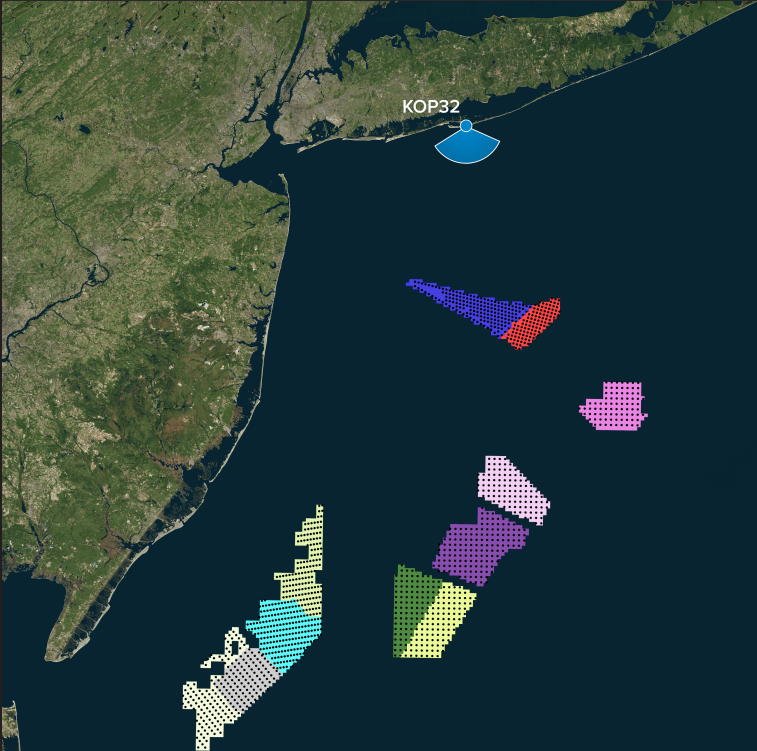
Heights are above mean sea level.
Structure design and placement are subject to final engineering.
No part of this photo simulation shall be altered in any way.

Photo Simulation Created Using
TrueView™ Technology
(Patent No.: US 6,184,906 B2)
Provided by



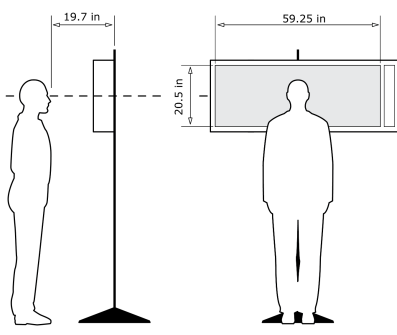
KOP 32, Fire Island Lighthouse - Top, Morning, Heading 161° - **Proposed View - Cumulative - External Leases and NY Bight Leases (1312ft) - Predicted Visibility**

For on-screen display:
Scale bar to be 4 inches wide
Viewing distance 19.7 inches



Latitude: 40.63217722
Longitude: -73.21843606
Elevation of Viewpoint Position: 154.709
Height of Camera Above Ground: 5.41
Date of Photography: 3/02/2023 at 8:22
Horizontal Field of View: 124°
Vertical Field of View: 55°
Nearest Turbine: 21.7mi (34.9km) (OCS-A 0512)
Furthest Visible Turbine: 59.8mi (96.2km) (OCS-A 0538)
Horizontal Field of View the Projects Occupy: 82.8°

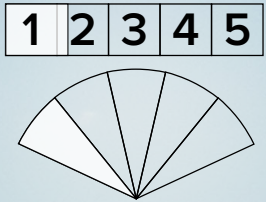
CORRECT VIEWING OF TRUEVIEW™ PHOTO SIMULATIONS



NOTES:
Viewpoint locations have been precision surveyed by
New York City Land Surveyors PC
63 Montgomery Avenue
Staten Island NY 10301

Heights are above mean sea level.
Structure design and placement are subject to final engineering.
No part of this photo simulation shall be altered in any way.

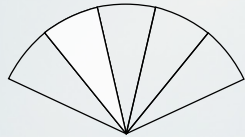
Photo Simulation Created Using
TrueView™ Technology
(Patent No.: US 8,184,906 B2)
Provided by



For on-screen display:
Scale bar to be 4 inches wide
Viewing distance 19.7 inches



1 2 3 4 5



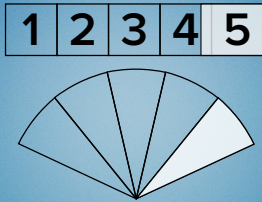
For on-screen display:
Scale bar to be 4 inches wide
Viewing distance 19.7 inches



For on-screen display:
Scale bar to be 4 inches wide
Viewing distance 19.7 inches



For on-screen display:
Scale bar to be 4 inches wide
Viewing distance 19.7 inches

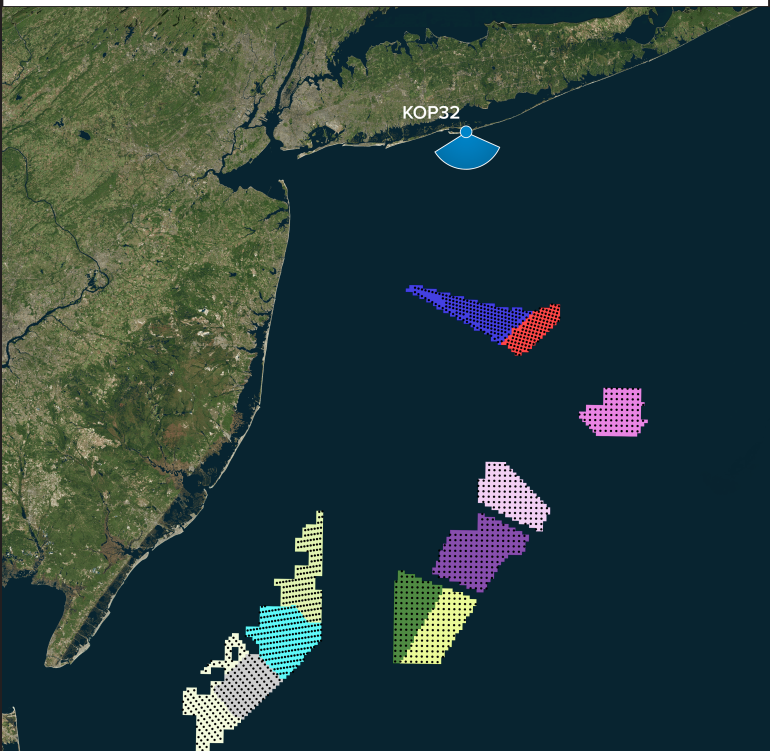


For on-screen display:
Scale bar to be 4 inches wide
Viewing distance 19.7 inches



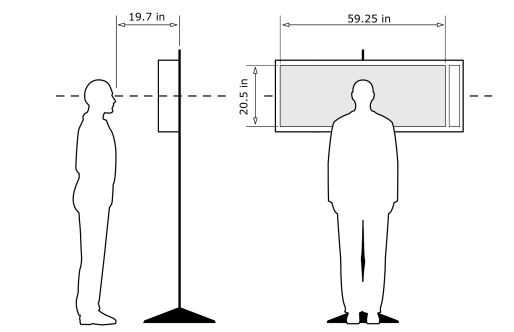
KOP 32, Fire Island Lighthouse - Top, Morning, Heading 161° - **Proposed View - Cumulative - External Leases and NY Bight Leases (1312ft) - Maximum Visibility**

For on-screen display:
Scale bar to be 4 inches wide
Viewing distance 19.7 inches



Latitude: 40.63217722
Longitude: -73.21843606
Elevation of Viewpoint Position: 154.709
Height of Camera Above Ground: 5.41
Date of Photography: 3/02/2023 at 8:22
Horizontal Field of View: 124°
Vertical Field of View: 55°
Nearest Turbine: 21.7mi (34.9km) (OCS-A 0512)
Furthest Visible Turbine: 59.8mi (96.2km) (OCS-A 0538)
Horizontal Field of View the Projects Occupy: 82.8°

CORRECT VIEWING OF TRUEVIEW™ PHOTO SIMULATIONS



NOTES:
Viewpoint locations have been precision surveyed by
New York City Land Surveyors PC
63 Montgomery Avenue
Staten Island NY 10301

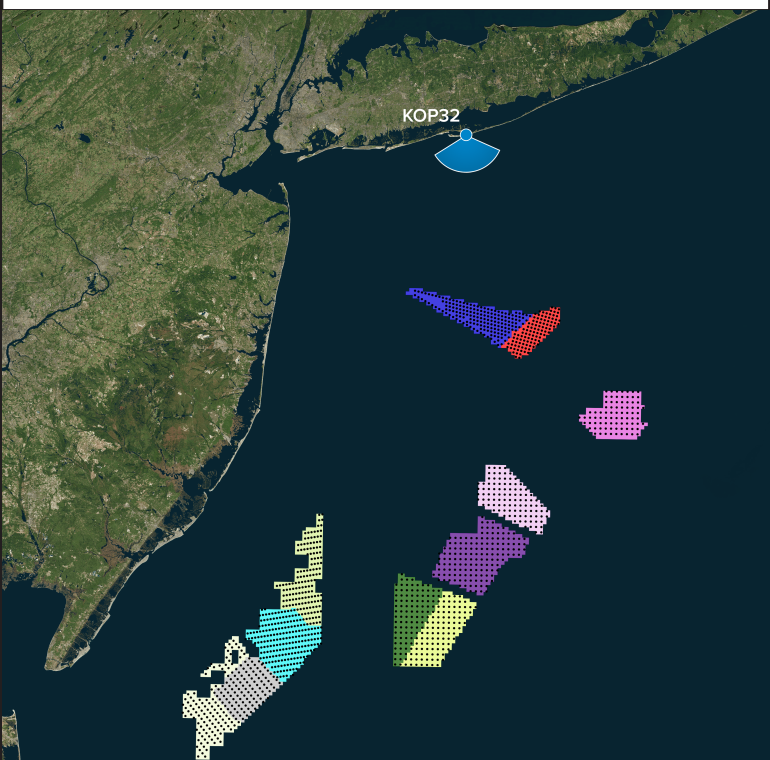
Heights are above mean sea level.
Structure design and placement are subject to final engineering.
No part of this photo simulation shall be altered in any way.

Photo Simulation Created Using
TrueView™ Technology
(Patent No.: US 6,184,906 B2)
Provided by



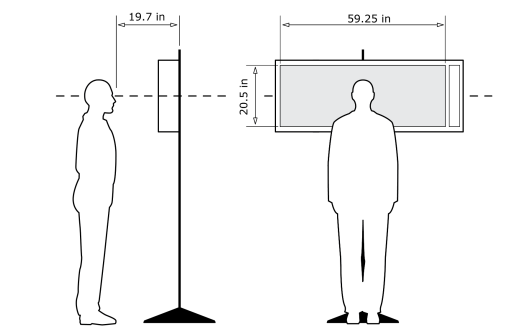
KOP 32, Fire Island Lighthouse - Top, Morning, Heading 161° - **Proposed View - Cumulative - External Leases and NY Bight Leases (1312ft) - Maximum Visibility**

For on-screen display:
Scale bar to be 4 inches wide
Viewing distance 19.7 inches



Latitude: 40.63217722
Longitude: -73.21843606
Elevation of Viewpoint Position: 154.709
Height of Camera Above Ground: 5.41
Date of Photography: 3/02/2023 at 8:22
Horizontal Field of View: 124°
Vertical Field of View: 55°
Nearest Turbine: 21.7mi (34.9km) (OCS-A 0512)
Furthest Visible Turbine: 59.8mi (96.2km) (OCS-A 0538)
Horizontal Field of View the Projects Occupy: 82.8°

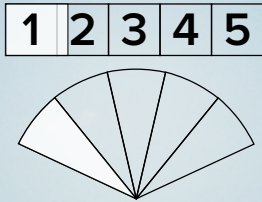
CORRECT VIEWING OF TRUEVIEW™ PHOTO SIMULATIONS



NOTES:
Viewpoint locations have been precision surveyed by
New York City Land Surveyors PC
63 Montgomery Avenue
Staten Island NY 10301

Heights are above mean sea level.
Structure design and placement are subject to final engineering.
No part of this photo simulation shall be altered in any way.

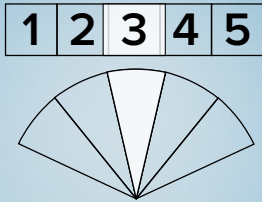
Photo Simulation Created Using
TrueView™ Technology
(Patent No.: US 6,184,906 B2)
Provided by



For on-screen display:
Scale bar to be 4 inches wide
Viewing distance 19.7 inches



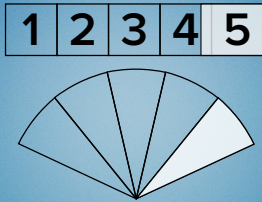
For on-screen display:
Scale bar to be 4 inches wide
Viewing distance 19.7 inches



For on-screen display:
Scale bar to be 4 inches wide
Viewing distance 19.7 inches



For on-screen display:
Scale bar to be 4 inches wide
Viewing distance 19.7 inches

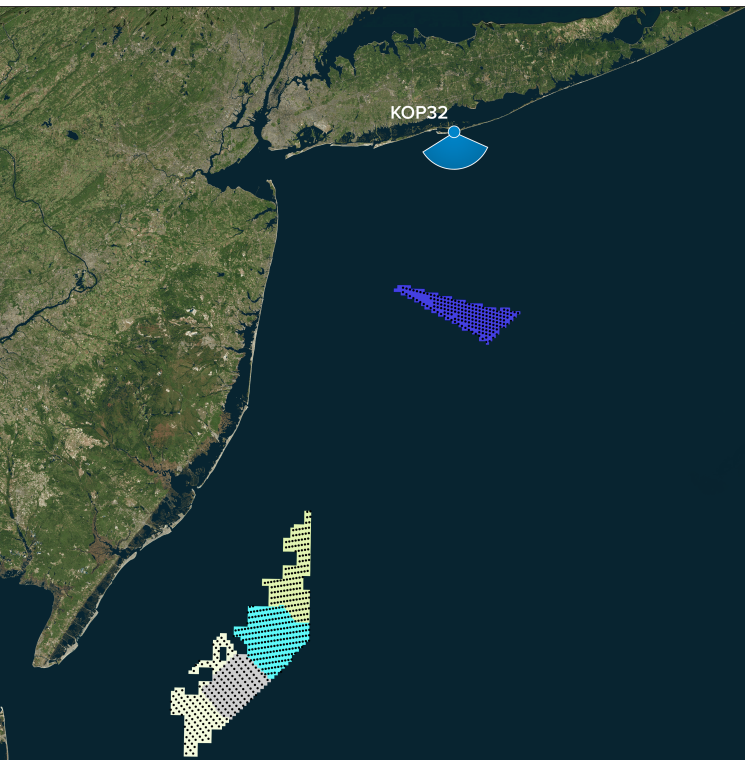


For on-screen display:
Scale bar to be 4 inches wide
Viewing distance 19.7 inches



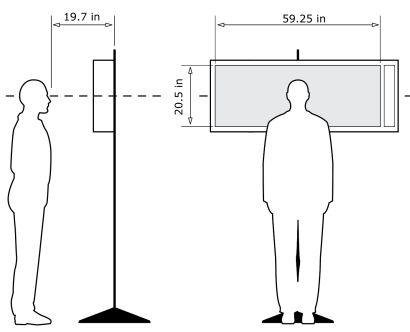
KOP 32, Fire Island Lighthouse - Top, Morning, Heading 161° - **Proposed View - External Leases - Predicted Visibility**

For on-screen display:
Scale bar to be 4 inches wide
Viewing distance 19.7 inches



Latitude: 40.63217722
Longitude: -73.21843606
Elevation of Viewpoint Position: 154.709
Height of Camera Above Ground: 5.41
Date of Photography: 3/02/2023 at 8:22
Horizontal Field of View: 124°
Vertical Field of View: 55°

CORRECT VIEWING OF TRUEVIEW™ PHOTO SIMULATIONS



NOTES:

Viewpoint locations have been precision surveyed by
New York City Land Surveyors PC
63 Montgomery Avenue
Staten Island NY 10301

Heights are above mean sea level.
Structure design and placement are subject to final engineering.
No part of this photo simulation shall be altered in any way.

Photo Simulation Created Using
TrueView™ Technology
(Patent No.: US 6,184,906 B2)
Provided by



KOP 32, Fire Island Lighthouse - Top, Morning, Heading 161° - **Proposed View - External Leases - Predicted Visibility**

For on-screen display:
Scale bar to be 4 inches wide
Viewing distance 19.7 inches

New York Bight

Fire Island Lighthouse - Top
Camera Heading 161°

● Viewpoint Location

● Turbines

Latitude: 40.63217722

Longitude: -73.21843606

Elevation of Viewpoint Position: 154.709

Height of Camera Above Ground: 5.41

Date of Photography: 3/02/2023 at 8:22

Horizontal Field of View: 124°

Vertical Field of View: 55°

CORRECT VIEWING OF TRUEVIEW™ PHOTO SIMULATIONS

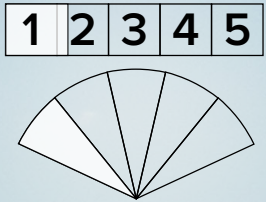
NOTES:

Viewpoint locations have been precision surveyed by
New York City Land Surveyors PC
63 Montgomery Avenue
Staten Island NY 10301

Heights are above mean sea level.
Structure design and placement are subject to final engineering.
No part of this photo simulation shall be altered in any way.

Photo Simulation Created Using
TrueView™ Technology
(Patent No.: US 6,184,906 B2)
Provided by

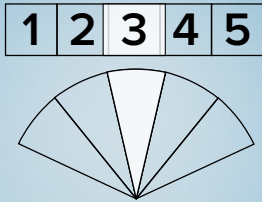
Truescape®
truescape.com



For on-screen display:
Scale bar to be 4 inches wide
Viewing distance 19.7 inches



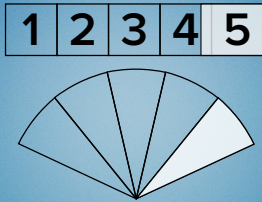
For on-screen display:
Scale bar to be 4 inches wide
Viewing distance 19.7 inches



For on-screen display:
Scale bar to be 4 inches wide
Viewing distance 19.7 inches



For on-screen display:
Scale bar to be 4 inches wide
Viewing distance 19.7 inches

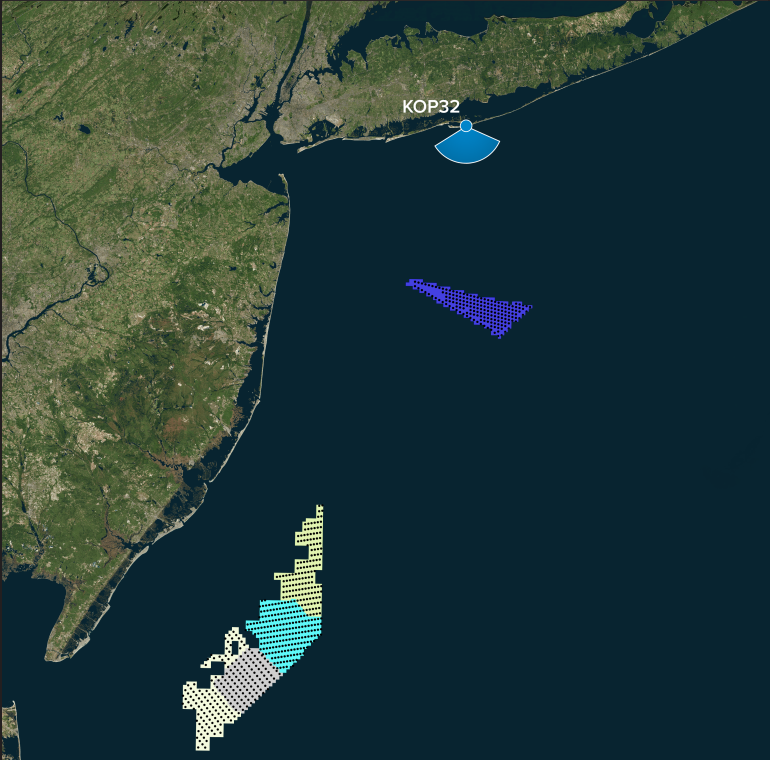


For on-screen display:
Scale bar to be 4 inches wide
Viewing distance 19.7 inches



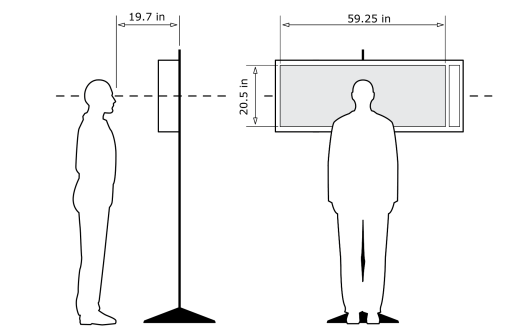
KOP 32, Fire Island Lighthouse - Top, Morning, Heading 161° - **Proposed View - External Leases - Maximum Visibility**

For on-screen display:
Scale bar to be 4 inches wide
Viewing distance 19.7 inches



Latitude: 40.63217722
Longitude: -73.21843606
Elevation of Viewpoint Position: 154.709
Height of Camera Above Ground: 5.41
Date of Photography: 3/02/2023 at 8:22
Horizontal Field of View: 124°
Vertical Field of View: 55°

CORRECT VIEWING OF TRUEVIEW™ PHOTO SIMULATIONS



NOTES:
Viewpoint locations have been precision surveyed by
New York City Land Surveyors PC
63 Montgomery Avenue
Staten Island NY 10301

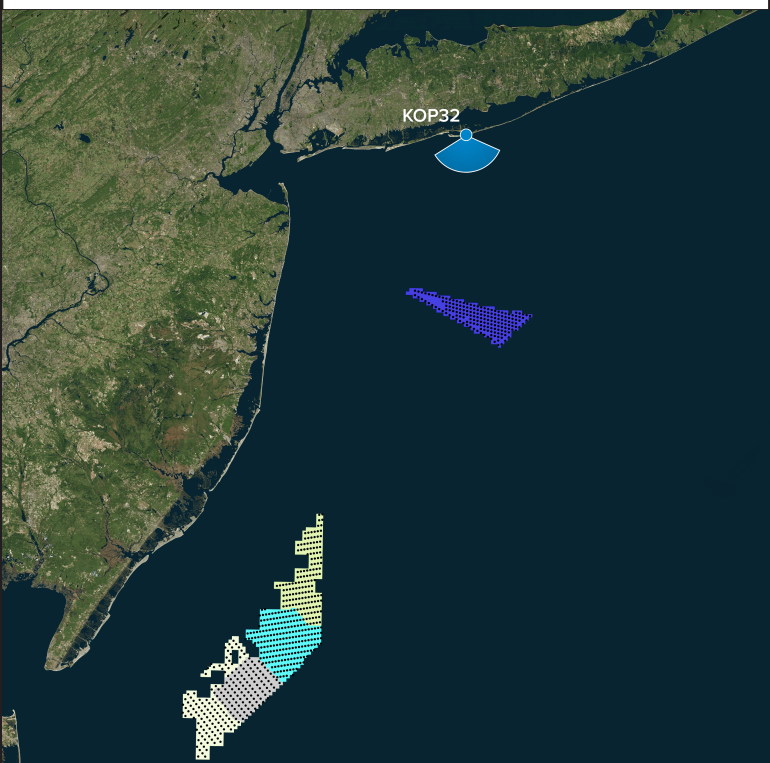
Heights are above mean sea level.
Structure design and placement are subject to final engineering.
No part of this photo simulation shall be altered in any way.

Photo Simulation Created Using
TrueView™ Technology
(Patent No.: US 6,184,906 B2)
Provided by



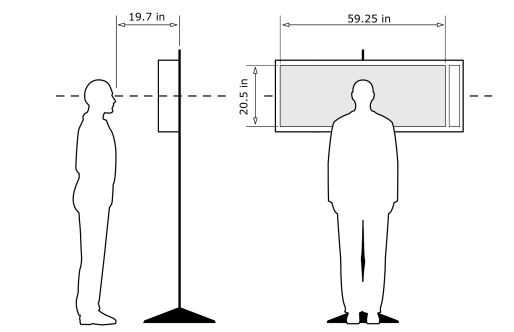
KOP 32, Fire Island Lighthouse - Top, Morning, Heading 161° - **Proposed View - External Leases - Maximum Visibility**

For on-screen display:
Scale bar to be 4 inches wide
Viewing distance 19.7 inches



Latitude: 40.63217722
Longitude: -73.21843606
Elevation of Viewpoint Position: 154.709
Height of Camera Above Ground: 5.41
Date of Photography: 3/02/2023 at 8:22
Horizontal Field of View: 124°
Vertical Field of View: 55°

CORRECT VIEWING OF TRUEVIEW™ PHOTO SIMULATIONS



NOTES:
Viewpoint locations have been precision surveyed by
New York City Land Surveyors PC
63 Montgomery Avenue
Staten Island NY 10301

Heights are above mean sea level.
Structure design and placement are subject to final engineering.
No part of this photo simulation shall be altered in any way.

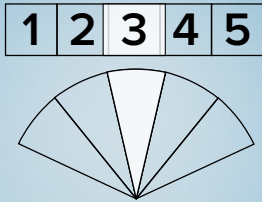
Photo Simulation Created Using
TrueView™ Technology
(Patent No.: US 6,184,906 B2)
Provided by



For on-screen display:
Scale bar to be 4 inches wide
Viewing distance 19.7 inches



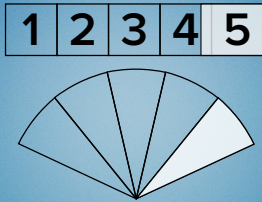
For on-screen display:
Scale bar to be 4 inches wide
Viewing distance 19.7 inches



For on-screen display:
Scale bar to be 4 inches wide
Viewing distance 19.7 inches



For on-screen display:
Scale bar to be 4 inches wide
Viewing distance 19.7 inches



For on-screen display:
Scale bar to be 4 inches wide
Viewing distance 19.7 inches