



PROGRESS REPORT FOR OCS-A 0539

NOVEMBER 1, 2024 TO APRIL 30, 2025

Submission Date: 05/1/2025

Version: 1

Prepared Pursuant to Lease Addendum C Section 3

Prepared by: Community Offshore Wind, LLC

Executive Summary

Since the submittal of the previous Progress Report ending October 31, 2024, Community Offshore Wind (COSW) has continued the development of Lease Area Outer Continental Shelf (OCS)-A 0539 in a responsible manner. COSW's current scope of development activities has been reduced due to the ongoing review of offshore wind projects and lease areas. Despite the adjusted scope, COSW is committed to continued outreach with Tribes/Tribal Nations, commercial and recreational fisheries, federal and state agencies, and all other stakeholders, as appropriate for the current and projected project development intensity.

A summary of the engagement activities held with Tribes/Tribal Nations is provided in Section 2. A summary of stakeholder engagement is provided in Section 3, with Fisheries engagement presented in Section 3.1, Agency engagement presented in Section 3.2, and other stakeholder engagement presented in Section 3.3. During this reporting period, COSW also completed site characterization and survey activities (provided in Section 4), which supported the continued development of the Project.

For additional information on the Project, and to sign-up for our newsletter, please visit our website: <https://communityoffshorewind.com/>.

Table of Contents

1	Purpose and Background	1
1.1	Purpose	1
1.2	Lessee Information	1
1.3	Lease Description	1
2	Tribes/Tribal Nations Engagement	3
2.1	Overall Tribes/Tribal Nations Engagement Progress Since Last Report	3
2.2	Identification of Potential Project Effects Related to Tribes/Tribal Nations Interests	5
2.3	Tribes/Tribal Nations Feedback on Export Cable Planning	5
2.4	Anticipated or Scheduled Tribes/Tribal Nations Engagement Activities	5
3	Engagement with Potentially Affected Parties	6
3.1	Summary of Commercial and Recreational Fisheries, Maritime, and Other Marine Users Engagement Activities	6
3.1.1	Overall Engagement Progress Since Last Report	6
3.1.2	Identification of Potential Project Effects Related to Parties	7
3.1.3	Feedback from Parties on Export Cable Planning	8
3.1.4	Anticipated or Scheduled Engagement Activities	13
3.2	Summary of Agency Engagement Activities	13
3.2.1	Overall Engagement Progress Since Last Report	13
3.2.2	Identification of Potential Project Effects Related to Parties	16
3.2.3	Feedback from Parties on Export Cable Planning	16
3.2.4	Anticipated or Scheduled Engagement Activities	16
3.3	Summary of Other Stakeholder Engagement Activities	17
3.3.1	Overall Engagement Progress Since Last Report	17
3.3.2	Identification of Potential Project Effects Related to Parties	17
3.3.3	Feedback from Parties on Export Cable Planning	22
3.3.4	Anticipated or Scheduled Engagement Activities	22
4	Survey Plan(s) Activities	23

Tables

Table 1	Tribes/Tribal Nations Engagement During Reporting Period	4
Table 2	Engagement with Commercial and Recreational Fisheries Participants and Stakeholders During Reporting Period ^a	9
Table 3	Engagement with Agencies During Reporting Period	14
Table 4	Engagement with Other Parties During Reporting Period	18

Figures

Figure 1	Lease Area OCS-A 0539	2
----------	-----------------------------	---

List of Appendices

- Appendix A Tribes and Other Parties Relevant to the Project**
- Appendix B Lessee and Liaison Contact Information**
- Appendix C Communications Plans**

Acronyms and Abbreviations

AFS	American Fisheries Society
BOEM	Bureau of Ocean Energy Management
COP	Construction and Operations Plan
COSW	Community Offshore Wind
COSW Project (Project)	the Community Offshore Wind Project
NYB	New York Bight
OCS	outer continental shelf

1 Purpose and Background

1.1 Purpose

In accordance with Lease Stipulation 3.1, Community Offshore Wind (COSW) must submit a Progress Report to the Bureau of Ocean Energy Management (BOEM) every six months, starting from the Effective Date on the Lease on through approval of the Construction and Operations Plan (COP). This report covers the sixth six-month period, from November 1, 2024 to April 30, 2025. The purpose of this Progress Report is to document overall project progress and engagement activities undertaken with Tribes/Tribal Nations, communities, ocean user groups, the general public, and other stakeholder groups throughout the reporting period, in addition to COSW's plans for continued engagement.

1.2 Lessee Information

Community Offshore Wind, LLC, a joint venture of RWE and National Grid, proposes to develop the COSW Project (COSW Project, Project), under the BOEM Commercial Lease of Submerged Lands for Renewable Energy Development on the Outer Continental Shelf (Lease Area OCS-A 0539; Lease Area).

Additional information about COSW can be found on our website:

<https://communityoffshorewind.com/>.

1.3 Lease Description

Lease Area OCS-A 0539 encompasses approximately 125,964 acres (50,976 hectares) and is located approximately 37 miles (32 nautical miles; 60 kilometers) from the closest point on land in New Jersey and approximately 64 miles (56 nautical miles; 104 kilometers) from the closest point on land in New York. Water depths within the Lease Area range from 98-171 feet (30-52 meters) mean lower low water. The location of Lease Area OCS-A 0539 is shown on Figure 1, below.

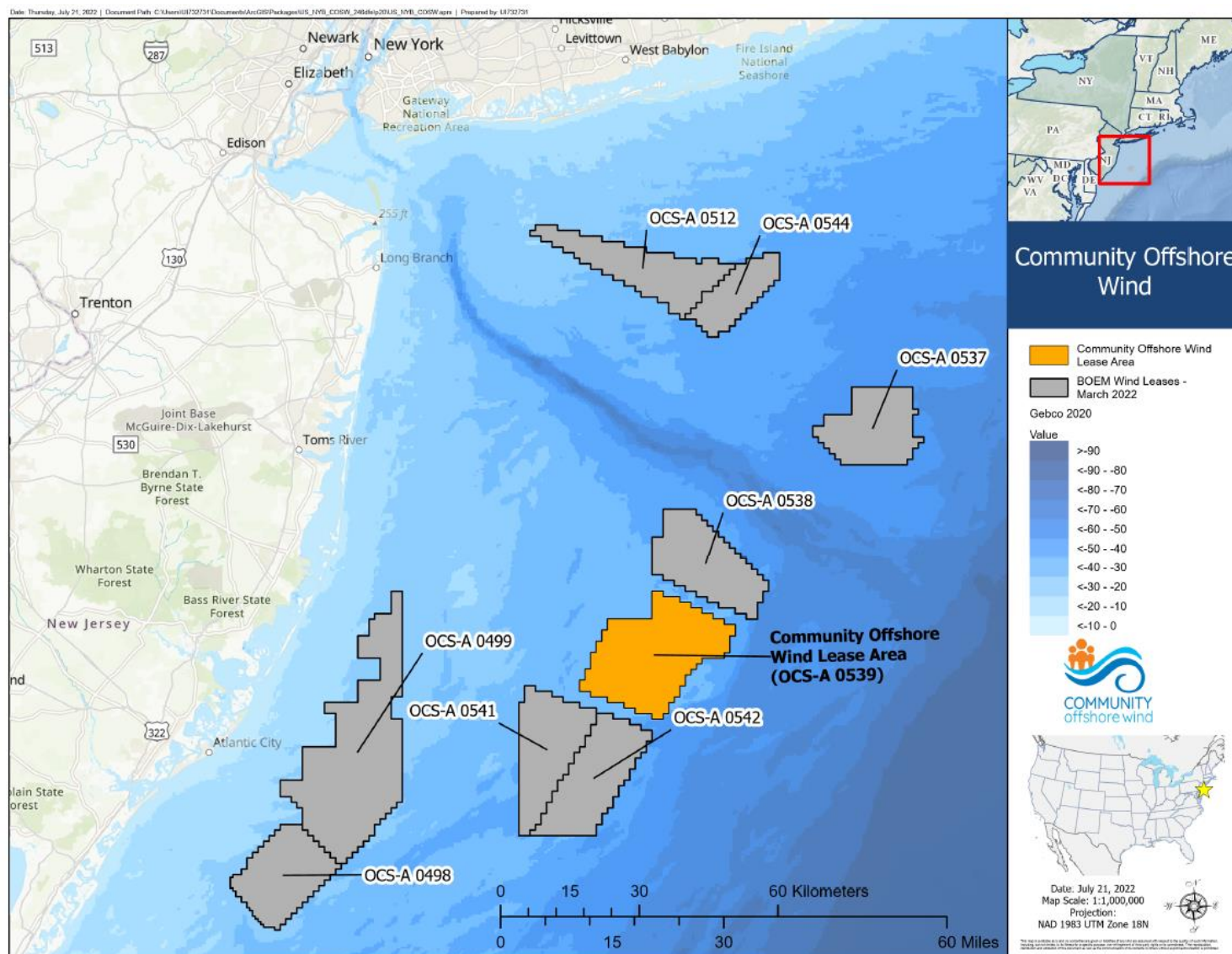


Figure 1 Lease Area OCS-A 0539

2 Tribes/Tribal Nations Engagement

COSW believes it is important to recognize Tribes/Tribal Nations as the original and continuing stewards of the lands and waters in which we work. We acknowledge and respect the enduring historical, cultural, and personal connections between Tribes/Tribal Nations to the region, both those Tribes/Tribal Nations currently residing in the region and those that were removed from it. We believe that the insights and knowledge of Tribes/Tribal Nations can and should play an important role in the clean energy transition, to help ensure that offshore renewable energy is developed in an environmentally, socially, and culturally sustainable manner.

A summary of engagement activities held and anticipated to be held over the next reporting period, with Tribes/Tribal Nations is provided in Section 2.1 through 2.4, below. These sections provide an overview of engagement with potentially affected federally recognized.

2.1 Overall Tribes/Tribal Nations Engagement Progress Since Last Report

Since the submission of the previous Progress Report, COSW has continued to engage with Tribes/Tribal Nations. Introduction letters were sent to all Tribal leaders to introduce the COSW Tribal Relations Manager. One Tribe responded to the letter and offered feedback, which is summarized in Table 1.

A summary of the engagement activities held with Tribes/Tribal Nations is provided in Table 1, below.

Table 1 Tribes/Tribal Nations Engagement During Reporting Period

Focus of Discussion or Engagement	Tribe(s)/Tribal Nations	Summary of Engagement Activities	Follow-up Actions, Activities, and Outcomes
Introduction of Tribal Relations Manager	Absentee-Shawnee Tribe of Indians of Oklahoma, Delaware Nation, Delaware Tribe of Indians, Eastern Shawnee Tribe of Oklahoma, Mashantucket Pequot Tribal Nation, Mashpee Wampanoag Tribe, Mohegan Tribe of Indians of Connecticut, Narragansett Indian Tribe, Shinnecock Indian Nation, Stockbridge-Munsee Community Band of Mohican Indians, Wampanoag Tribe of Gay Head (Aquinnah)	Letter sent to representatives of Tribes/Tribal Nations to introduce the COSW Tribal Relations Manager. Letter offered the opportunity to meet with the COSW Tribal Relations Manager to help foster Tribal engagement between COSW and all Tribes/Tribal Nations.	Mashpee Wampanoag Tribe called to have a conversation with the COSW Tribal Relations Manager. Key points of conversation were: 1) Workforce development, 2) Environmental and cultural concerns, 3) Desire for involvement and funding, 4) Resolving communication challenges, and 5) Continued participation on all sides. COSW did not receive responses from any of the other Tribes/Tribal Nations.

Notes:
COSW = Community Offshore Wind

2.2 Identification of Potential Project Effects Related to Tribes/Tribal Nations Interests

Tribes and Tribal Nations have previously expressed concerns to COSW about the limited time they typically have to review offshore wind project COPs and associated studies during BOEM's National Environmental Policy Act and National Historic Preservation Act reviews. They have repeatedly requested that offshore wind project developers provide them with an opportunity to review and comment on COP supporting study reports and offer feedback well before BOEM initiates its National Environmental Policy Act and National Historic Preservation Act reviews. Tribes and Tribal Nations believe that receiving these documents earlier and holding virtual or face-to-face meetings with Tribal representatives, offshore wind developers, and the developers' technical consultants to discuss study results will help address their capacity issues. Consequently, COSW plans to share COP supporting studies with Tribes and Tribal Nations concurrently with submitting the studies to BOEM.

2.3 Tribes/Tribal Nations Feedback on Export Cable Planning

As COSW continues to plan and refine export cable routes for the project it will consult with Tribe/Tribal Nations to assess potential cable routes and intends to continue to engage the Tribes/Tribal Nations in export cable planning discussions over the next two reporting periods. COSW anticipates the opportunity to hold additional conversations with Tribes/Tribal Nations and recognizes these conversations are important to help ensure transparency and continued collaboration.

2.4 Anticipated or Scheduled Tribes/Tribal Nations Engagement Activities

During the next reporting period, COSW anticipates the following engagement:

- Coordinating with Tribes/Tribal Nations to identify COP studies of interest to them;
- Sending letters to Tribes/Tribal Nations introducing the newly appointed President of COSW and to provide an opportunity to meet and discuss the current state of affairs in offshore wind; and
- Meeting in person or virtually with the newly appointed President of COSW and Project team to discuss next steps

3 Engagement with Potentially Affected Parties

COSW believes that coordination and engagement with all stakeholders is crucial to the success of an offshore wind project and is committed to an “early and often” approach to help ensure that the Project is developed in an environmentally, socially, and culturally sustainable manner for all. Starting prior to the effective date of Lease OCS-A 0539, COSW began to identify and engage with various types of stakeholders, identified as potentially interested in or affected by offshore wind and the Project. In support of the stakeholder engagement strategy, a list of stakeholders which are potentially applicable to the development, construction, and operations of an offshore wind farm in the New York Bight (NYB) was developed and can be found in Appendix A. This list is intended to be a “living” document and will be updated throughout the process, as additional stakeholders are identified.

COSW has continued to reach out to stakeholders to introduce the Project and Project team, to provide an overview of the Project, and to solicit feedback. A summary of the engagement activities held with Commercial and Recreational Fisheries, Maritime, and other marine users is provided in Section 3.1, a summary of Agency engagement presented in Section 3.2, and a summary of other stakeholder engagement presented in Section 3.3.

3.1 Summary of Commercial and Recreational Fisheries, Maritime, and Other Marine Users Engagement Activities

3.1.1 Overall Engagement Progress Since Last Report

Since the submittal of the previous Progress Report, COSW had 98 direct engagements with fishery participants and stakeholders, as well as other maritime users. Engagements during this reporting period focused primarily on development of the Project’s fisheries monitoring and research framework, and development of the Project and the Project Design Envelope as it relates to fishing, maritime, and other marine users, given completion of initial survey campaigns in mid-October 2024. The Project team continues to take a broad approach to engagement with a full range of potentially interested parties as detailed in Table 2. Engagement strategies included in-person meetings, text messages, phone and video calls, small group meetings, large group virtual and in-person meetings and presentations, as well as attendance at research symposia, regional trade shows and industry forums.

COSW’s two Fisheries Technical Advisors/Fisheries Representatives continue to play an important role in engaging with and communicating the concerns and perspectives of their respective fisheries to the Project and had an additional 367 direct engagements during the reporting period. Members of the Project team also attended various regional fishery management council and other fisheries-related meetings, both virtually and in-person, to maintain awareness of issues of importance to fisheries participants and stakeholders.

COSW is aware of the engagement burden on fisheries participants and fisheries, maritime, and other marine stakeholders. The COSW team continued to balance the frequency of repeated outreach to individuals and groups with the need to understand and accurately convey fisheries, maritime, and other marine use characteristics, operations, and perspectives to the larger Project team, as well as promote coordination between these stakeholders and Project development activities. Exploring

efficient and effective communication methods will remain a focus of our conversations throughout the lifetime of the Project.

COSW continued to participate with other developers in the NYB fisheries coordination work group, a sub-group of the American Clean Power (ACP) Fisheries Subcommittee (Fisheries Subcommittee). The group has focused on approaches for coordinated engagement and outreach to fisheries participants, managers, and agencies to promote efficient and effective engagement. The work group has continued to explore regional approaches to fisheries monitoring and permitting, and whether such efforts might complement federal fisheries survey mitigation. Additional discussions have focused on collating information on research being conducted within lease areas for potential future distribution to fisheries participants and stakeholders. COSW and several other NYB developers also continue to include one another's fisheries liaisons in electronic distribution of fisheries and mariners' notices to help improve coordination and awareness of adjacent survey operations. Given that several NYB developers have reorganized staffing and adjusted project development timelines, the work group recently re-integrated with the full Fisheries Subcommittee but will continue to coordinate engagement and outreach on an ad-hoc basis.

COSW participates in the Fisheries Subcommittee's biweekly virtual meetings, which serve as a broader forum for discussion and coordination on fisheries topics relevant to multiple regions. Additionally, COSW remains an active participant in the Fisheries Subcommittee's work group focused on improving recreational fisheries engagement. COSW is also a member of ACP's Maritime Subcommittee, which meets regularly to discuss issues related to navigation, safety, and other maritime uses.

COSW has maintained active participation as the only offshore wind developer to join the membership of the Science Center for Marine Fisheries, a National Science Foundation Industry/University Cooperative Research Center. The goal of this collaborative is to provide academic research products that address scientific needs and enhance fisheries management through engagement with industry partners. COSW has sponsored a project to explore the costs, logistical constraints, and policy implications of Atlantic surfclam (*Spisula solidissima*) hatchery and nursery siting, as well as reuse of optical benthic survey data to inform Atlantic surfclam distribution. COSW has continued working with the National Oceanic Atmospheric Administration National Marine Fisheries Service to advance the objectives of their joint Cooperative Research and Development Agreement through regular meetings to identify monitoring priorities and research questions that will support important elements of the National Oceanic Atmospheric Administration National Marine Fisheries Service/BOEM Federal Survey Mitigation Strategy.

A summary of the engagement activities held with commercial and recreational fisheries participants and fisheries, maritime, and other marine stakeholders is provided in Table 2, below. Please note that many engagement activities cover multiple topics and do not have a single focus.

3.1.2 Identification of Potential Project Effects Related to Parties

COSW continues to discuss potential Project effects raised by fisheries participants and fisheries, maritime, and other marine stakeholders during this reporting period:

- **Ecological:** Potential effects of repeated and geographically overlapping survey activities on fisheries resources, effects of construction and operation on fisheries-independent resource

surveys, measuring the potential cumulative effects of offshore wind development on fisheries.

- **Safety and Navigation:** Need for appropriate marking and lighting of turbine structures to promote safe navigation within and around lease areas.
- **Access and Economics:** Ability of commercial mobile gear vessels to fish within the Lease Area during and post-construction, potential social and economic effects of Project development on fishing communities, challenges associated with vessel assurance processes and certifications to participate in offshore wind vessel service needs.

The Project team continues to integrate fisheries participant and stakeholder feedback into the overall Project development and is actively working to incorporate concerns identified during this and previous reporting periods into Project design and development.

3.1.3 Feedback from Parties on Export Cable Planning

COSW has continued the development of the export cable routing required to connect the Project into the electric grid. The Project team has incorporated local knowledge of important fishing areas and fisheries habitats from engagements with area fishing captains into the export cable planning process. COSW has continued to conduct outreach to subsea cable owners with assets in the offshore export cable planning area and engaged port authorities, pilot associations, and other maritime users in the nearshore export cable planning area to identify concerns and inform development and future construction of export cable routes.

Table 2 Engagement with Commercial and Recreational Fisheries Participants and Stakeholders During Reporting Period^a

Focus of Discussion or Engagement	Party(ies)	Summary of Engagement Activities	Follow-up Actions, Activities, and Outcomes
Planned survey activities within Lease Area and potential export cable corridors	<u>All Parties</u> Commercial and Recreational fisheries participants and stakeholders; academic and research institutions and programs; state and federal agencies; resource survey managers; fisheries liaisons and representatives; regional fishery management councils	<ul style="list-style-type: none"> Electronic distribution of fisheries notices and Lease Area maps. Direct communication regarding seasonal patterns of commercial mobile and fixed-gear fishing operations and transits, seasonal and port-specific for-hire and private recreational fishing/transit patterns, and potential overlap with survey activities. Direct coordination with resource survey managers and communication with researchers and agency staff. 	<ul style="list-style-type: none"> Updates to contact list for distribution of future fisheries notices and coordination of fishing and survey activities. Provided information on potential overlap of commercial and for-hire fishing activities and transits to survey crew and scientific party during daily briefings. Communications with fisheries resource survey managers to coordinate any co-occurring operations.
Fisheries use patterns Vessel employment Project updates and offshore wind development nationally	<u>Recreational</u> Recreational fishermen; tackle or recreational industry; charter/for-hire fishermen; recreational fishing association	Direct communication and/or discussion of the following: <ul style="list-style-type: none"> Recreational fisheries use of Lease Area, including fishing and transit patterns, general status of fall fishing activities. Potential opportunities and/or venues for industry-to-industry engagement. Requests for information regarding opportunities for for-hire vessels to provide services to the Project (e.g., guard and/or scout vessel work). Status of Project survey, development, and engagement activities and potential effects of the January 20, 2025 Presidential Memorandum regarding Wind Projects on Project planning. Informed recreational fisheries stakeholders of Project reorganization and expected level of activity. 	<ul style="list-style-type: none"> Integrate feedback on fishing activities into COP development. Catalogue information on interest in service vessel opportunities for future Project needs. Provided future fisheries point-of-contact information.
Fishery-specific coordination of survey operations with fisheries Navigational safety and fishery accommodations Fisheries research and monitoring	<u>Commercial</u> Commercial fishermen; fleet owners/managers; fishing associations; seafood processors	Direct communication and discussion of the following: <ul style="list-style-type: none"> Location and timing of geotechnical survey operations within Lease Area. Concerns regarding the general effects of site investigation activities on commercially important species. Concerns regarding safety and environmental impacts of Vineyard Wind blade loss, potential for future incidents. Opportunities for commercial industry participation in future Project collaborative research and monitoring efforts. Status of Project survey, development, and engagement activities and potential effects of the January 20, 2025 Presidential Memorandum regarding Wind Projects on Project planning. Informed commercial fisheries stakeholders of Project reorganization and expected level of activity. 	<ul style="list-style-type: none"> Incorporated feedback on seasonality and location of mobile gear fleets into survey operations planning. Integrate feedback on safety concerns activities into Project and COP development, and potential effects of site investigation activities into future survey planning. Integrate roles for industry into ongoing development of monitoring and research programs. Participate in regional initiatives to co-develop research ideas with industry. Continue to support development of Project’s vessel assurance process. Provided future fisheries point-of-contact information.

Focus of Discussion or Engagement	Party(ies)	Summary of Engagement Activities	Follow-up Actions, Activities, and Outcomes
<p>Regional monitoring approaches and standards</p> <p>Federal survey mitigation</p> <p>Regional fisheries compensation</p>	State and federal agencies	<p>Regular calls and other meetings with agency staff to share information and discuss topics including:</p> <ul style="list-style-type: none"> • Site investigation activity updates. • Status of federal fisheries survey mitigation plans, and use of alternative methods and platforms (e.g., eDNA, hook-and-line surveys) for conducting fisheries resources surveys within offshore wind lease areas. • Use of turbines for environmental monitoring, and ecosystem approaches to offshore wind monitoring in Europe. • Development of standards for project-level fisheries and socioeconomic monitoring, and data/information needs for cumulative impact assessment. • Options for regional approaches to coordination of permitting for fisheries monitoring in the NYB, relative to protected species considerations. • Sea scallop and Atlantic surfclam stock enhancement workshops and potential use of enhancement as a mitigation approach. • Progress of RFA and Design Oversight Committee on fisheries compensation fund development and engagement. • Participation in collaboration efforts supported by states like NYSERDA’s F-TWG meetings. • Informed commercial fisheries stakeholders of Project reorganization and expected level of activity. 	<ul style="list-style-type: none"> • Integration of feedback into development of Project’s fishery resource monitoring and research framework. • Continued to explore regional fisheries monitoring opportunities and regional mechanisms for federal survey mitigation with other developers. • Continued participation in regional fisheries compensation fund development through the ACP Fisheries Subcommittee. • Adjustments to cadence of regular call schedules and Project points-of-contact.
<p>Existing monitoring approaches, research, and extension initiatives</p> <p>Monitoring plan design, methods, and tools</p> <p>Federal survey mitigation</p> <p>Opportunities for collaboration and partnerships</p>	Academic or research institutions and programs	<ul style="list-style-type: none"> • Participated in working group and advisory body meetings of regional research collaboratives (RWSC, ROSA). Participated in ROSA Data Governance Committee kickoff meeting, focused on standards for data reuse, long-term storage and sharing. • Discussed regional data, research, and governance needs associated with shellfish stock enhancement efforts and industry interest. • Discussed researchers’ experiences and challenges with obtaining federal permits for fisheries monitoring within offshore wind lease areas. • Discussed ecosystem approaches to advancing regional science and opportunities for developers to contribute. Discussed roles for research organizations to facilitate regional monitoring and mitigation efforts. • Discussed results of various cooperative research projects and development of opportunities for fishermen to participate in offshore wind research and monitoring. • Participated in regular meetings of SCEMFIS industry/university research cooperative, attended semi-annual Industry Advisory Board meeting. Coordinated with primary investigators regarding progress of current COSW-supported projects focused on shellfish stock enhancement and optical benthic habitat mapping data. • Informed commercial fisheries stakeholders of Project reorganization and expected level of activity. 	<ul style="list-style-type: none"> • Integrate feedback into ongoing development of Project’s fisheries monitoring plan and future discussions regarding regional coordination of fisheries permitting, monitoring, and survey mitigation. • Continued exploration and development of future collaborative opportunities with commercial and recreational fishing industries. • Consideration of SCEMFIS proposals for future funding at annual Industry Advisory Board meeting.
Offshore wind-related fisheries topics	RFMC	<ul style="list-style-type: none"> • Coordinated with MAFMC staff regarding offshore wind topics and programs of potential interest to the Council during scheduled offshore wind sessions. 	<ul style="list-style-type: none"> • Consideration of BOEM Fisheries Mitigation Guidance, updates on NOAA Federal Fisheries Survey Mitigation Strategy, summary of ongoing research in lease areas, and general project updates as future topics.

Focus of Discussion or Engagement	Party(ies)	Summary of Engagement Activities	Follow-up Actions, Activities, and Outcomes
<p>Project updates and industry perspectives</p> <p>Navigational safety</p> <p>Vessel assurance</p> <p>Mitigation guidance</p>	Fisheries liaisons; fisheries representatives	<ul style="list-style-type: none"> Team calls to discuss Project development and industry perspectives. Discussed fishery conditions within regional gillnet (monkfish, dogfish, skate species) fisheries, and status of scallop resources. Reviewed existing cooperative research opportunities and participation. Discussed industry feedback and concerns regarding proper marking and lighting of turbines. Discussed industry interest in offshore wind opportunities, availability of safety training classes, vessel assurance and potential for assistance to meet future certification requirements. Reviewed BOEM final Fisheries Mitigation Guidance and concerns regarding distribution of compensation funds. Discussed Project reorganization, points-of-contact, and expected levels of engagement. 	<ul style="list-style-type: none"> Incorporation of feedback on navigational safety and mitigation into Project and COP development. Continue to support Project's vessel assurance process and integrate feedback on required certifications and training into program development. Integrate feedback into ongoing development of Project's research and monitoring plan, and roles for industry.
Project design and cable routing	Marine commercial operators; subsea cable asset owners	<ul style="list-style-type: none"> Outreach to various cable asset owners to discuss identification and location of subsea cable assets. Discussed project layout and design elements and avoidance of interactions with active cables. Discussed best practices for deconflicting cable-laying activities during construction. Attended IMCA North American Regional meeting. 	<ul style="list-style-type: none"> Integrate feedback into Project and COP development. Provided updates regarding survey activities and anticipated Project development timelines.
AFS Mid-Atlantic Chapter Annual meeting	Academic and research institutions or programs; state and federal agency staff; developers	<ul style="list-style-type: none"> Attended and participated in special session entitled "Cumulative effects of offshore wind development: Building knowledge to support co-existence". Discussed new approaches being piloted for fisheries resource surveys within offshore wind lease areas. Discussed potential regional standards for socioeconomic monitoring and other information needs to assess cumulative effects. Engaged with graduate students regarding various research topics related to species distribution and oceanographic conditions. 	<ul style="list-style-type: none"> Integrate feedback on cumulative effects and data needs into Project and COP development. Consider potential use of new methodologies and integrate regional data standards into Project's fisheries and environmental monitoring framework.
VIMS Scallop Enhancement	Academic and research institutions or programs; state and federal agency staff; developers; commercial fishermen; fleet owners/managers; seafood processors	<ul style="list-style-type: none"> Participated in workshop entitled "Overview of the State of Knowledge and Considerations for Advancement in the Offshore Environment of the US East Coast" focused on lessons learned from efforts in other countries, and potential opportunities/challenges for similar activities in the US. Discussed similarities of Atlantic surfclam enhancement efforts with researchers. Discussed scientific needs with agency scientists. Discussed need for coordinated approach to scallop stock enhancement as part of fishery strategic planning efforts. 	<ul style="list-style-type: none"> Integrate stakeholder perspectives on scallop stock enhancement into Project and COP development. Consider scientific and data needs in Project's fisheries and environmental monitoring framework.

Focus of Discussion or Engagement	Party(ies)	Summary of Engagement Activities	Follow-up Actions, Activities, and Outcomes
Atlantic Surfclam Fishery Stock Enhancement Mitigation Workshop	Academic and research institutions or programs; state and federal agencies; developers; fleet owners/managers; seafood processors; commercial fishery associations	<ul style="list-style-type: none">• Participated in invitation-only, facilitated Atlantic surfclam stock enhancement mitigation workshop convened by the Atlantic surfclam industry and supported by multiple partners.• Identified strategies and realistic next steps for development of stock enhancement as a mitigation approach to offset potential impacts of offshore wind.• Discussed roles of federal and state agencies, current mitigation requirements for developers, and potential involvement of fisheries management entities.	<ul style="list-style-type: none">• Integrate agency and stakeholder perspectives and feedback into Project and COP development.• Consider monitoring and research needs that could support enhancement strategies in development of Project’s fisheries and environmental monitoring framework.
NEFSC Northeast Cooperative Research Summit	Academic and research institutions or programs; state and federal agencies; seafood processors; commercial fishermen; recreational fishermen	<ul style="list-style-type: none">• Participated in an annual cooperative research summit, including small group tours of shoreside facilities and involvement in cooperative research.• Participated in topic-based breakout groups on alternative fishing gears/methods in offshore wind areas, understanding ecosystem impacts of offshore wind development, engaging fishermen in social science, environmental monitoring on commercial vessels, adaptation of fisheries resource surveys to meet evolving needs.• Discussed pilot hook-and-line survey with several participating vessel captains.• Discussed future cooperative opportunities to participate in offshore wind research and monitoring.	<ul style="list-style-type: none">• Integrate roles for industry into ongoing development of monitoring and research programs. Participate in regional initiatives to co-develop research ideas with industry.
NEFMC Sea Scallop Visioning Workshops	Regional fishery management councils; commercial fishermen; fleet owners/managers; state and federal agencies	<ul style="list-style-type: none">• Participated in two workshops held by NEFMC regarding the development of a strategic plan for the Atlantic Sea Scallop Fishery.• Discussion topics included scallop stock enhancement, fishery best practices, improvements to rotational management, and economic challenges.	<ul style="list-style-type: none">• Integrate stakeholder feedback into Project and COP development.• Consider potential monitoring, research, and data needs that could support strategic planning efforts in development of Project’s fisheries and environmental monitoring framework.

Notes:

^a The engagement activities listed within this table are from November 1, 2024 to April 30, 2025. The next Progress Report will include engagement activities from May 1, 2025 through October 31, 2025.

AFS = American Fisheries Society; BOEM = Bureau of Ocean Energy Management; COP = Construction and Operations Plan; COSW = Community Offshore Wind; eDNA = environmental deoxyribonucleic acid; IMCA = International Marine Contractors Association; MAFMC = Mid-Atlantic Fishery Management Council; NEFMC = New England Fishery Management Council; NEFSC = Northeast Fisheries Science Center; NJ = New Jersey; NY = New York; NYB = New York Bight; NYSERDA = New York State Energy Research and Development Authority; Project = COSW Project, Community Offshore Wind Project; RFA = Regional Fund Administrator; RFMC = Regional Fishery Management Council; ROSA = Responsible Offshore Science Alliance; RWSC = Regional Wildlife Science Collaborative; SCEMFIS = Science Center for Marine Fisheries; US = United States; VIMS = Virginia Institute of Marine Sciences

3.1.4 Anticipated or Scheduled Engagement Activities

COSW is committed to maintaining engagement with all interested and affected fisheries stakeholders, even while the pace of Project development has changed. During the next reporting period, COSW anticipates the following engagement:

- COSW will continue outreach and coordination with fisheries stakeholders and participants, fisheries survey coordinators, fishery managers, subsea asset owners, maritime industry operators, and the United States Coast Guard, as the Project continues offshore export cable planning and lease area development.
- COSW will continue to participate in ACP's Fisheries Subcommittee and work groups and will continue informal coordination with other NYB developers to promote efficient regional engagement approaches.
- COSW will continue to develop its monitoring and research framework in collaboration with academic and research institutions as well as state and federal fisheries agency partners, which includes exploration of coordinated regional monitoring and federal survey mitigation approaches with other lessees and development of opportunities for interested fisheries participants.
- COSW will continue to engage with representatives of the commercial and recreational fishing industries to improve coordination and communication.
- COSW will continue to support the development of a comprehensive regional fisheries compensatory mitigation fund through its participation in the ACP Fisheries Subcommittee and the Regional Fund Administrator Design Oversight Committee.
- COSW plans to attend ACP's annual WINDPOWER conference, the Science Center for Marine Fisheries Semi-annual Industry Advisory Board meeting, the Oceanic Network's International Partnership Forum, and other regional engagement opportunities as resources allow.

3.2 **Summary of Agency Engagement Activities**

3.2.1 Overall Engagement Progress Since Last Report

Since the submittal of the previous Progress Report, COSW held one inter-agency meeting, which provided an opportunity for agencies to hear from the Project team, receive an update on the Project, to provide any important information, and to provide feedback and recommendations. This meeting was intended to supplement regular engagement with individual agencies.

COSW also held introductory and update meetings with individual federal and state agencies to solicit feedback and recommendations on the methodologies and preliminary results of various assessments being done in support of the COP, in addition to offshore export cable routing. COSW also regularly engaged with BOEM, meeting on an as-needed basis.

A summary of the engagement activities held with agencies is provided in Table 3, below.

Table 3 Engagement with Agencies During Reporting Period

Focus of Discussion or Engagement	Party(ies)	Summary of Engagement Activities	Follow-up Actions, Activities, and Outcomes
Regular Meetings held with BOEM	BOEM	Regularly scheduled meetings were held with BOEM to discuss the development of the Lease Area and relevant Lease Stipulations. Specifically, COSW discussed the status of the COP strategy and phasing, anticipated Project timeline, impacts of the January 20, 2025 Presidential Memorandum regarding Wind Projects on the offshore wind industry, and the Programmatic Environmental Impact Statement, among other items.	COSW to continue providing BOEM with regular Project updates.
Interagency Project Meeting	BOEM, NOAA, NPS, USACE, USCG, USEPA, USFWS, NJDEP, NYSDEC, NYSDOS, NYSDOT, NYSDPS, NYSOPRHP	COSW shared an update on the Project, including COP submittal strategy and filing schedule, PDE updates and phased development approach, activities completed since the June 2024 biannual interagency meeting, and upcoming Project activities.	COSW to: <ul style="list-style-type: none"> • schedule a follow-up meeting with NOAA Fisheries to discuss MMPA LOA consultation. • schedule a follow-up meeting with NPS to discuss NHL and LWCF Sites in proximity to the proposed Project.
Introductory Meeting	DoD	Introduced the Project and the Project team, discussed Project status, and discussed items brought up in the DoD Clearinghouse’s response to their informal review.	COSW will set up a quarterly meeting series with the US Navy to coordinate on monitoring and mitigation plans (with potential biannual, as needed).
Pre-FIN Discussion	Permitting Council	Discussed timing of when to file the FIN (when the Project was considering filing a COP before administration change) and Project phasing.	No action items from this meeting.
Introductory Meeting	NJDEP	Introduced the Project and the Project team; discussed Project status; Project details; required Federal permits and approvals; required NJ State Permits and Approvals; anticipated Project schedule; and NJDEP comments/input.	Confirmation by the Project that the last submitted shapefiles and provide most recent shapefiles should they be different.
Introductory Meeting	All USCG Districts	To connect all interested USCG units, provided a Project overview to include background on COSW’s joint venture partners, RWE and National Grid, provided an update on Project status, discussed USCG’s informal review of COSW’s Draft NSRA and discussed future opportunities to collaborate.	COSW to set up follow-up meeting for Project updates.
Introductory meeting	NYCDOT	Introduced the Project and Project team, walked through the proposed cable routes, engineering and construction details, and preliminary schedule.	COSW to set up meeting when Project is further along.

Focus of Discussion or Engagement	Party(ies)	Summary of Engagement Activities	Follow-up Actions, Activities, and Outcomes
Follow-Up Meeting	NPS	To discuss the Project and the NHL and LWCF Sites, provided a project overview and an update on Project status, discussed results of the offshore infrastructure visual PAPE followed by the onshore infrastructure visual PAPE for both CW1 and CW2, for which evaluation and analysis are ongoing. COSW discussed LWCF Act Section 6(f) properties and other parklands near and/or intersected by the Project.	COSW to: <ul style="list-style-type: none">• ensure NPS contacts are up to date.• verify the boundaries of the Brooklyn Heights Historic District and confirm no overlap.• Get shapefiles from NY state of location of the Long Beach Wantagh Bikeway

Notes:
BOEM = Bureau of Ocean Energy Management; COP = Construction and Operations Plan; COSW = Community Offshore Wind; DoD= Department of Defense; CW1 = Community Offshore Wind 1; CW2 = Community Offshore Wind 2; FIN= FAST-41 Initiation Notice; LOA = Letter of Authorization; LWCF = Land and Water Conservation Fund; MMPA = Marine Mammal Protection Act; NHL = National Historic Landmarks; NOAA = National Oceanic Atmospheric Administration; NJ = New Jersey; NJDEP = New Jersey Department of Environmental Protection; NPS = National Park Service; NSRA = Navigation Safety Risk Assessment; NYB = New York Bight; NYCDOT = New York City Department of Transportation; NY = New York; NYSDEC = New York State Department of Environmental Conservation; NYSDOS = New York State Department of State; NYSDOT = New York State Department of Transportation; NYSDPS = New York State Department of Public Service; NYOPRHP= New York State Office of Parks, Recreation, and Historic Preservation; PAPE= Preliminary Area of Potential Effect; PDE = project design envelope; Project = COSW Project, Community Offshore Wind Project; US = United States; USACE = United States Army Corps of Engineers; USCG = United States Coast Guard; USEPA = United States Environmental Protection Agency; USFWS = United States Fish and Wildlife Service

3.2.2 Identification of Potential Project Effects Related to Parties

Potential effects related to the Project or Project activities were not raised by agencies for COSW consideration during this reporting period. Potential effects discussed as it relates to the Project export cable routing are discussed in Section 3.2.3, below.

3.2.3 Feedback from Parties on Export Cable Planning

COSW continued the development of the Project layouts and export cable routing. Individual agency meetings were held to review turbine layouts and export cable routing and receive feedback. Feedback included:

- Clarification by COSW that onshore components do not overlap with any Land and Water Conservation Fund sites, which was a concern from National Park Service;
- New York City Department of Transportation will require layout sheets that focus on the alignment of the cables and that COSW will provide profile views for future discussions;
- Request that COSW coordinate with Sandy Hook and Hudson River pilots on anchorages as they relate to the export cable route; and,
- Request that COSW provide as much detail as possible from previous engagements, consultations, surveys, etc. in the routing alternatives analysis, especially in regard to collocating the offshore export cables.

Where applicable, feedback was incorporated into the turbine layout and offshore export cable routing. Updating routing will be shared with the agencies when available to provide an overview of the changes made and to solicit further review and feedback.

3.2.4 Anticipated or Scheduled Engagement Activities

During the next reporting period, COSW anticipates the following engagement:

- COSW will continue to meet with BOEM to provide Project updates.
- COSW will host a regular bi-annual inter-agency meeting in June 2025 to provide a general update on the Project.
- COSW will continue engagement with the agencies on the offshore export cable routing, to solicit feedback and recommendations.
- COSW will continue engagement with the agencies to discuss protocols and methodologies for resource assessments to be developed in support of the COP.

3.3 Summary of Other Stakeholder Engagement Activities

As noted in Lease Stipulation 3.1.1, COSW also engaged with other stakeholder parties that may be potentially affected by Project activities on the OCS, which include, but are not limited to, the following:

- Coastal communities;
- Educational and research institutions;
- Environmental and public interest non-governmental organizations;
- Ocean users;
- Submarine cable operators; and,
- Underserved communities.

3.3.1 Overall Engagement Progress Since Last Report

COSW has continued outreach to a variety of stakeholders across our Project geography. Engagement strategies included in-person meetings, phone and video calls, information distribution, small group meetings, large group virtual and in-person presentations with multiple participants, as well as attendance at events, trade shows, and tours of stakeholder facilities. The Project team continues to take a broad approach to engagement with stakeholders in order to meet them where they are, leveraging opportunities for sponsorship and participation in local workforce and labor, environmental, educational, community, business and industry, and volunteerism events.

A summary of the engagement activities held with stakeholders is provided in Table 4, below. The primary focus of most meetings is to introduce COSW and provide regular updates on our progress.

3.3.2 Identification of Potential Project Effects Related to Parties

COSW has identified several categories of potential Project effects raised by stakeholders:

- **Ecological:** Potential effects of cable electromagnetic field; effects of survey equipment and construction on marine wildlife.
- **Workforce:** Raised the need for wraparound services to support workforce development and access to job and contract opportunities, including for the justice-involved and formerly incarcerated.
- **Traffic:** Raised concerns over the impacts to traffic during onshore construction associated with offshore wind projects.

Table 4 Engagement with Other Parties During Reporting Period

Focus of Discussion or Engagement	Date(s)	Party(ies)	Role/Summary of Engagement Activities	Follow-up Actions, Activities, and Outcomes
Annual Luncheon	5/1/2024	NEW	Engaged attendees	Continuing conversation with interested attendees
SOMOS Inc. Puerto Rico Conference	11/6/2024 through 11/10/2024	SOMOS, Inc.	Engaged attendees, sponsored nightly activity	Continuing conversations with attendees
Hub Warming Celebration	11/12/2024	Meeting Essential Needs with Dignity (MEND)	Sponsor/engaged attendees	Continuing conversations with attendees
Annual Building Awards	11/13/2024	Staten Island Chamber of Commerce	Sponsor/engaged attendees	Continuing conversations with attendees
55 th Anniversary Gala	11/14/2024	Ironbound Community Corporation	Sponsor	Continuing engagements with Ironbound
Open House and Union Apprenticeship Awareness Day	11/16/2024	NYSERDA	Table attendance, engaged attendees	Continuing engagement with NYSERDA and interested attendees
Open House – Cobble Hill, Brooklyn	11/18/2024	COSW	Host/Project education and information sharing	Continuing engagement with interested attendees
League of Municipalities Conference	11/19/2024 through 11/21/2024	New Jersey Chamber of Commerce	Sponsor/Table attendance	Continuing engagement with interested attendees
Annual Cocktail Party	11/19/2024	NYLCV	Engaged attendees	Continuing engagement with interested attendees

Focus of Discussion or Engagement	Date(s)	Party(ies)	Role/Summary of Engagement Activities	Follow-up Actions, Activities, and Outcomes
Open House – Red Hook, Brooklyn	11/20/2024	COSW	Host/Project education and information sharing	Continuing engagement with interested attendees
Labor Event - Empowering Our Workforce with DC9	11/20/2024	COSW	Host/Workforce development education and training, tabling	Continuing engagement with DC9 and interested attendees
Veterans Service Awards	11/20/2024	ULA Network	Engaged attendees	Continuing engagement with interested attendees
Open House – Adams Street Library, Brooklyn	11/22/2024	COSW	Host/Project education and information sharing	Continuing engagement with interested attendees
Jones Beach Energy and Nature Center Field Trip	12/2/2024	Citizens Campaign for the Environment & Uniondale High School	Host/STEM Education, workforce development activities	Continuing engagement with stakeholders
Giving Tuesday – Winter coat donations	12/3/2024	Multiple organizations	Sponsor	Continuing engagement with host organizations
Kwanzaa Community Awards Dinner	12/6/2024	ATAP	Sponsor	Continuing engagements with ATAP
Wallabout Wonderland Holiday Market	12/7/2024	Brooklyn Navy Yard	Sponsor/Table attendance	Continuing engagement with interested attendees
Holiday Toy Giveaway	12/13/2024	New Leader Hoops	Sponsor	Continuing engagement with host organization
Annual Meeting and Gala	12/17/2024	Brooklyn Chamber of Commerce	Sponsor/engaged attendees	Continuing engagement with interested attendees

Focus of Discussion or Engagement	Date(s)	Party(ies)	Role/Summary of Engagement Activities	Follow-up Actions, Activities, and Outcomes
Coat and Toy Drive	12/21/2024	Martin Luther King, Jr Center of Long Beach	Sponsor	Continuing engagement with host organization
Career Awareness Panel	1/9/2025	Valley Stream Central School District	Panelist	Continuing engagement with host organization
Legislative Breakfast	1/23/2025	NYLCV	Host, Panelist	Continuing engagement with interested attendees
Congressional Reception	2/6/2025 through 2/7/2025	New Jersey Chamber of Commerce	Engaged attendees	Continuing engagement with interested attendees
Long Beach Polar Bear Plunge	2/9/2025	Make A Wish Foundation	Sponsor/ engaged attendees	Continuing engagement with interested attendees
54 th Annual Legislative Conference	2/14/2025 through 2/16/2025	New York State Association of Black, Puerto Rican, Hispanic & Asian Legislators, Inc.	Sponsor/engaged attendees, stakeholder meetings	Continuing engagement with host organization and interested attendees
Engineering Week Youth Panel	2/19/2025	Brooklyn Public Library	Sponsor, panelists	Continuing engagement with interested attendees
DC 21 Coatings Contractor Expo	2/19/2025	IUPAT	Engaged attendees	Continuing engagement with host organization and interested attendees
Career and Trades Youth Panel	3/2/2025	Long Island Federation of Labor and William Floyd High School	Panelist	Continuing engagement with host organization and interested attendees

Focus of Discussion or Engagement	Date(s)	Party(ies)	Role/Summary of Engagement Activities	Follow-up Actions, Activities, and Outcomes
18 th Annual National LAMPAC Meeting	3/3/2025 through 3/5/2025	Edison Electric Institute, IBEW, National Labor & Management Public Affairs Committee	Engaged attendees	Continuing engagement with host organization and interested attendees
She Can Build Open House	3/11/2025	IUPAT District Council 9	Engaged attendees	Continuing engagement with host organization and interested attendees
NYCBCTC Annual Conference	3/25/2025 through 3/30/2025	Building & Construction Trades Council of Greater New York	Engaged attendees	Continuing engagement with host organization and interested attendees
IPF	4/28/2025 through 05/01/2025	Oceantic Network	Sponsor/ engaged attendees	Continuing engagement with host organization and interested attendees

Notes:

ACP = American Clean Power Association; AFL-CIO = American Federation of Labor and Congress of Industrial Organizations; ATAP = All Things Are Possible; BOEM = Bureau of Ocean Energy Management; COSW = Community Offshore Wind; IBEW = International Brotherhood of Electrical Workers; IPF = International Partnering Forum; IUPAT = International Union of Painters and Allied Trades; LAMPAC = Labor and Management Public Affairs Committee; MEND = Meeting Essential Needs with Dignity ; NA = Not Applicable; NEW = Nontraditional Employment for Women; NJ = New Jersey; NY = New York; NYC = New York City; NYCBCTC = New York City Building and Construction Trades Council; NYLCV = NY League Conservation Voters; NYSERDA = New York State Energy Research and Development Authority; STEM = science, technology, engineering, and math; ULA Network = Union Labor Advisory Network; WFD = Workforce Development

3.3.3 Feedback from Parties on Export Cable Planning

COSW continued the development of the export cable routing required to connect the wind farm into the electric grid. The Project team is actively engaging with stakeholders as part of its export cable route investigation and survey planning and is working to incorporate feedback and recommendations into the export cable planning process. At this stage in development, COSW has heard concerns from stakeholders centered around the potential traffic impacts for any potential onshore routes.

3.3.4 Anticipated or Scheduled Engagement Activities

During the next reporting period, COSW anticipates the following engagement:

- COSW will perform outreach to stakeholder groups, included but not limited to federal, state, and local government stakeholders, labor unions, community, and environmental groups as needed.
- COSW will maintain relationships within the communities our Project may affect.

4 Survey Plan(s) Activities

No survey activities have taken place since the submittal of the last Progress Report and no survey activities are expected to take place in 2025.

Appendix A Tribes and Other Parties Relevant to the Project

Table A-1 Tribes and Tribal Nations Relevant to the Project

Name of Tribe	Party Type(s)
Absentee-Shawnee Tribe of Indians of Oklahoma	FTribe
Delaware Nation	FTribe
Delaware Tribe of Indians	FTribe
Eastern Shawnee Tribe of Oklahoma	FTribe
Mashantucket Pequot Tribal Nation	FTribe
Mashpee Wampanoag Tribe	FTribe
Mohegan Tribe of Indians of Connecticut	FTribe
Narragansett Indian Tribe	FTribe
Shawnee Tribe	FTribe
Shinnecock Indian Nation	FTribe
Stockbridge-Munsee Community Band of Mohican Indians	FTribe
Wampanoag Tribe of Gay Head-Aquinnah	FTribe
Nanticoke Lenni-Lenape Tribal Nation	STribe
Powhatan Renape Nation	STribe
Ramapough Lenape Nation	STribe
Unkechaug Nation	STribe

Notes:

FTribe = Federally Recognized Tribe; STribe = State Recognized Tribe

Table A-2 Parties Relevant to the Project

Name of Party	Party Type(s)
<i>Commercial and Recreational Fishing</i>	
Commercial Scallop Fishery	CFish
Commercial Surfclam Fishery	CFish
Commercial Gillnet Fishery (Monkfish, Dogfish)	CFish
Commercial Lobster Fishery	CFish
Commercial Trawl Fishery	CFish
Commercial Longline Fishery (Tilefish)	CFish
Commercial Fishing Associations	CFish
Commercial Seafood Processors	CFish
Commercial Industry Services	CFish
NY For-hire Headboat Fisheries	RFish
NJ For-hire Headboat Fisheries	RFish
NY For-hire Charter Boat Fisheries	RFish
NJ For-hire Charter Boat Fisheries	RFish
NY Private Recreational Anglers	RFish
NJ Private Recreational Anglers	RFish
NY Recreational Fishing Organizations	RFish
NJ Recreational Fishing Organizations	RFish
NY Recreational Bait and Tackle Shops or Industry	RFish
NJ Recreational Bait and Tackle Shops or Industry	RFish
Regional Fishery Management Councils	RFMC
New England Fishery Management Council	RFMC
Mid-Atlantic Fishery Management Council	RFMC
Atlantic States Marine Fisheries Commission	RFMC
Academic and Research Institutions or Programs	ERI
Responsible Offshore Development Alliance	CFish
<i>Federal and State Agencies</i>	
BOEM	FA
BSEE	FA
USACE	FA
NOAA Fisheries	FA
USEPA	FA
USFWS	FA
USCG	FA
DoD	FA
NPS	FA

Name of Party	Party Type(s)
NYSDOS	SA
NYSDEC	SA
NYSDPS	SA
NYSDOT	SA
NJDEP	SA
Connecticut Department of Energy and Environmental Protection	SA
Rhode Island Department of Environmental Management	SA
Massachusetts Division of Marine Fisheries	SA
Maryland Department of Natural Resources	SA
Delaware Department of Natural Resources and Environmental Control	SA
North Carolina Division of Marine Fisheries	SA
Virginia Marine Resources Commission	SA
<i>Other Ocean Users</i>	
NYB Subsea Cable Owners and Operators	SCO
North Atlantic Submarine Cable Association	SCO
National Environmental Non-governmental organizations (NGOs)	NGO
NY Environmental NGOs	NGO
NJ Environmental NGOs	NGO
Oceana	NGO
Citizens Campaign for the Environment	NGO
The Nature Conservancy	NGO
Defenders of Wildlife	NGO
National Wildlife Federation	NGO
Sierra Club	NGO
Natural Resources Defense Council	NGO
National Audubon Society	NGO
Surfrider Foundation	NGO
Wildlife Conservation Society	NGO
NY League of Conservation Voters	NGO
NJ League of Conservation Voters	NGO
Scenic Hudson	NGO
Riverkeeper	NGO
Waterfront Alliance	NGO
RETI Center	NGO
Local Initiatives Support Corporation NY	NGO
Environment NJ	NGO
Sustainable NJ	NGO
Coalition of Environmentally Responsible Economies	NGO

Name of Party	Party Type(s)
NY Environmental Justice Groups	EJG
Long Island Environmental Justice Groups	EJG
Brooklyn Environmental Justice Groups	EJG
NY Environmental Justice Groups	EJG
Staten Island Environmental Justice Groups	EJG
NJ Environmental Justice Groups	EJG
Monmouth County Environmental Justice Groups	EJG
Ocean County Environmental Justice Groups	EJG
WE ACT	EJG
UPROSE	EJG
Academic and Research Institutions or Programs	ERI
NY Community Colleges	ERI
NJ Community Colleges	ERI
State University New York	ERI
Stony Brook University	ERI
Cornell University	ERI
Rutgers, The State University of New Jersey	ERI
Monmouth University	ERI
NYSERDA	ERI
NJ Research and Monitoring Initiative	ERI
Regional Wildlife Science Collaborative	ERI
Responsible Offshore Science Alliance	ERI
National Offshore Wind Research and Development Consortium	ERI
NY Marine Rescue Center	ERI
NY Aquarium	ERI
Industry Groups	IG
American Clean Power	IG
Business Network for Offshore Wind	IG
Maritime Industry/Mariners	M
American Waterways Operators	M
World Shipping Council	M
State Working Groups	SWG
NYSERDA Environmental Technical Working Group	SWG
NYSERDA Fisheries Technical Working Group	SWG
NYSERDA Maritime Technical Working Group	SWG
NJ Environmental Resources Offshore Wind Working Group	SWG
Chambers of Commerce	Ccom
NJ Chamber of Commerce	Ccom

Name of Party	Party Type(s)
Brooklyn Chamber of Commerce	Ccom
Staten Island Chamber of Commerce	Ccom
Long Beach Chamber of Commerce	Ccom
NJ African American Chamber of Commerce	Ccom
NJ Sustainable Business Council	Ccom
Orange County Partnership	Ccom
Workforce Development Agencies	WDA
NY Community Based Organizations	CG
Spin The Yard	CG
Billion Oyster Project	CG
NYC Parks Stewardship	CG
BOC Network, Inc.	CG
Southwest Brooklyn Industrial Development Corporation	CG
Long Island Progressive Coalition	CG
The Wilkins Group	CG
NJ Community Based Organizations	CG
NY Coastal Communities	CC
Long Island Coastal Communities	CC
Brooklyn Coastal Communities	CC
NYC Coastal Communities	CC
Staten Island Coastal Communities	CC
NJ Coastal Communities	CC
Monmouth County Coastal Communities	CC
Ocean County Coastal Communities	CC
NY Underserved Communities	UC
Long Island Underserved Communities	UC
Brooklyn Underserved Communities	UC
NYC Underserved Communities	UC
Staten Island Underserved Communities	UC
NJ Underserved Communities	UC
Monmouth Underserved Coastal Communities	UC
Ocean County Underserved Communities	UC
NY Labor Unions	LU
NJ Labor Unions	LU
NY State Building and Construction Trades Council	LU
NJ State Building and Construction Trades Council	LU
NY State American Federation of Labor and Congress of Industrial Organizations	LU
NJ State American Federation of Labor and Congress of Industrial Organizations	LU

Name of Party	Party Type(s)
Long Island Federation of Labor	LU
Hudson Valley Building and Construction Trades	LU
Western NY Area Labor Federation	LU

Notes:

BOEM = Bureau of Ocean Energy Management; BSEE = Bureau of Safety and Environmental Enforcement; CC = Coastal Community; Ccom = Chambers of Commerce ; CFish = Commercial Fishing Industry ; CG = Community Group; DoD = Department of Defense; EJG = Environmental Justice Groups; ERI = Educational and Research Institutions; FA = Federal Agency; FTribes = Federally Recognized Tribes; IG = Industry Group; LU = Labor Union; M = Maritime Industry/Mariners; NGO = Non-Governmental Organizations; NJ = New Jersey; NJDEP = New Jersey Department of Environmental Protection; NOAA Fisheries = National Oceanic Atmospheric Administration National Marine Fisheries Service; NPS = National Park Service; NY = New York; NYB = New York Bight; NYC = New York City; NYSDEC = New York State Department of Environmental Conservation; NYSDOS = New York State Department of State; NYSDOT = New York State Department of Transportation; NYSDPS = New York State Department of Public Service; NYSEERDA = New York State Energy Research and Development Authority; RETI = Resilience, Education, Training, and Innovation; RFish = Recreational Fishing Industry; RFMC = Regional Fishery Management Councils and Commissions; SA = State Agency; SCO = Submarine Cable Operators; STribes = State Recognized Tribes; SWG = State Working Group; UC = Underserved Community; USACE = United States Army Corps of Engineers; USCG = United States Coast Guard; USEPA = United States Environmental Protection Agency; USFWS = United States Fish and Wildlife Service; WDA = Workforce Development Agencies

Appendix B Lessee and Liaison Contact Information

Table B-1 Community Offshore Wind Points of Contact

Name/Title	Role	Contact Information
Daniel Sieger President	Leads project direction and scope.	DanS@communityoffshorewind.com Phone: 857-472-3459
Bryan Gray Development Director	Oversees permitting, environmental affairs, marine affairs, fisheries, and community engagement	BryanG@communityoffshorewind.com Phone: 516-243-4120
Amanda Mayhew Federal Permitting Manager	Oversees federal permitting of the Project, primary point contact for the Agency Communications Plan, primary point of contact for the Native American Tribal Communications Plan	Amanda.Mayhew@rwe.com Phone: 804-536-8002
Nahid Carter State Permitting Manager	Oversees state permitting of the Project, primary point Contact for the Agency Communications Plan	NahidC@communityoffshorewind.com Phone: 646-589-5702
Rick Robins Marine Affairs Manager	Oversees marine affairs and commercial and recreational fisheries engagement of the Project, point of contact for the Fisheries Communications Plan	RickR@communityoffshorewind.com Phone: 757-901-2675
Retha Fernandez	Primary point of contact for community engagement.	RethaF@communityoffshorewind.com Phone: 516-312-4794

Appendix C Communications Plans

Native American Tribes Communication Plan:

<https://communityoffshorewind.com/-/media/Project/RWE/COffshoreWind/homepage/new-york-bight-joint-native-american-tribes-communications-plan.pdf>

Fisheries Communications Plan:

<https://communityoffshorewind.com/-/media/Project/RWE/COffshoreWind/fisheries/COSW-fisheries-communications-plan-v2-2023-04-25.pdf>

Agency Communication Plan:

<https://communityoffshorewind.com/-/media/Project/RWE/COffshoreWind/documents/agency-communications-plan.pdf>