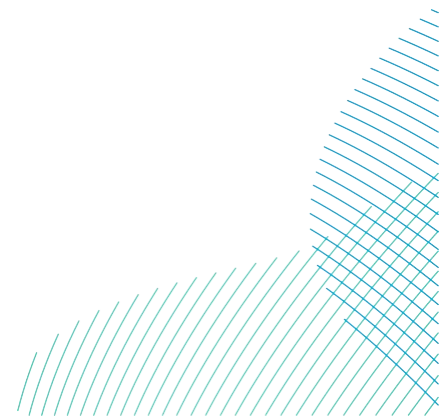




# Gulf of America Offshore Wind RWE Progress Report

Document Date:	June 1, 2025
Document Number:	Ecodoc 005723898-01
Revision Number:	01
Classification:	Public
Reporting Period	November 1, 2023- May 1, 2025



Click or tap here to enter text.

Company	RWE Offshore US Gulf, LLC
Project	Gulf of America Offshore Wind
Package	N/A
Asset	Lease No. OCS-G 37334 (Lessee Company No. 15169)
Document Title	Gulf of America Offshore Wind RWE Progress Report
Ecodoc Number	005723898-01
Revision Number	01

This document and any information therein are confidential property of RWE Offshore US Gulf, LLC and without infringement, neither the whole nor any extract may be disclosed, loaned, copied or used for manufacturing, provision of services or other purposes whatsoever without prior written consent of RWE Offshore US Gulf, LLC, and no liability is accepted for loss or damage from any cause whatsoever from the use of the document. RWE Offshore US Gulf, LLC retains the right to alter the document at any time unless a written statement to the contrary has been appended.

Revision	Date	Status/Reason for Revision	Author	Checker	Approver
01	June 1, 2025	First Gulf of America Progress Report	A. Mayhew	R.Robins	D. Sieger
02	July 17, 2025	Revised First Gulf of America Progress Report	A. Mayhew	R.Robins	D. Sieger

## Table of Contents

Executive Summary .....	8
1 Background and Purpose .....	9
1.1 Background of the Gulf of America Offshore Wind Lease Area .....	9
1.2 Purpose of the Biannual Progress Reports .....	11
2 Tribes/Tribal Nations .....	11
2.1 Summary of Engagements with Tribes/Tribal Nations .....	12
2.2 Potential Project Effects Related to Tribes/Tribal Nations' Interests .....	12
2.3 Upcoming Engagement Activities with Tribes and Tribal Nations .....	13
3 Commercial and Recreational Fisheries .....	16
3.1 Summary of Engagements with Fisheries .....	16
3.1.1 Collaboration, Knowledge, and Capacity Building .....	16
3.2 Potential Project Effects Raised by Commercial and Recreational Fisheries .....	20
3.3 Upcoming Engagement Activities with Commercial and Recreational Fisheries .....	23
4 Federal, State, and Local Agencies .....	24
4.1 Summary of Engagements with the Agencies .....	24
4.2 Potential Project Effects Raised by the Agencies .....	25
4.3 Upcoming Engagement Activities with the Agencies .....	25
5 Other Stakeholders .....	26
5.1 Summary of Engagement Activities with Other Stakeholders .....	26
5.2 Potential Project Effects Related to Other Stakeholders .....	28
5.3 Upcoming Engagement Activities With Other Stakeholders .....	28
5.4 Coordination with other leaseholders .....	28
6 Survey Planning .....	29
7 Transmission Planning .....	29

## List of Tables

Table 1 Summary of engagement activities between RWE Offshore US Gulf, LLC, it's Project team and Tribes/Tribal Nations .....	14
Table 2 Fishery Engagements with RWE Offshore US Gulf, LLC and the Project team during the reporting period .....	18
Table 3 Potential project concerns and effects raised by Commercial and Recreational Fisheries to the Project. ....	19
Table 4 Agency Engagements During the Reporting Period .....	22
Table 5 Other stakeholder engagements during the reporting period .....	25

## List of Figures

Figure 1 Map showing the Gulf of America Lease Area .....	10
---	----

## Defined Key Terms

Term	Definition	Style & Usage Notes
Gulf of America Offshore Wind, also referred to as the "Project"	<p>Term includes the Lease Development Area holistically, including the offshore and onshore components, but this should be defined in the document to avoid any confusion for the reader as to the area referenced as the "Project."</p> <p>Term also refers to the company holding the BOEM Lease OCS-G 37334 (RWE Offshore Gulf, LLC)</p>	When referring to the overall Project, it is acceptable to refer to it as "Project." Note capitalization.
Lease or Lease Area	<p>Formal term for the document that describes the terms and conditions of the Project's <i>Commercial Lease of Submerged Lands for Renewable Energy Development on the Outer Continental Shelf-Gulf 37334 (OCS-G 37334)</i> issued by the Bureau of Ocean Energy Management (BOEM). 102,480-acre, BOEM-designated, Renewable Energy Lease Area OCS-G 37334.</p>	<p>The signed Lease (and other information regarding leases in the Gulf of America) can be found at:</p> <p><a href="https://www.boem.gov/sites/default/files/documents/renewable-energy/state-activities/Lease%20OCS-G%2037334-RWE%20Offshore%20US%20Gulf%20LLC_0.pdf">https://www.boem.gov/sites/default/files/documents/renewable-energy/state-activities/Lease%20OCS-G%2037334-RWE%20Offshore%20US%20Gulf%20LLC_0.pdf</a></p>
leaseholder	Any company that holds a BOEM-issued offshore wind lease	Note that leaseholder is one word and is not capitalized.

## List of Acronyms and Abbreviations

Term	Definition
ACP	Agency Communications Plan
BOEM	Bureau of Ocean Energy Management
BSEE	Bureau of Safety and Environmental Enforcement
Company	RWE Offshore Wind Gulf, LLC
COP	Construction and Operations Plan
DOE	Department of Energy
DOI	Department of the Interior
eNGOS	Environmental non-governmental organizations
FCP	Fisheries Communications Plan
ft	feet
GLO	General Land Office
Gulf	Gulf of America
GW	gigawatt
km	kilometers
Lease	Commercial Lease of Submerged Lands for Renewable Energy Development on the Outer Continental Shelf, OCS-G 37334
LA	Louisiana
m	meters
mi	miles
NATCP	Native American Tribes Communication Plan
NGO/eNGO	non-governmental organization/environmental non-governmental organization
nm	nautical miles

NOAA	National Oceanic and Atmospheric Administration
OCS	Outer Continental Shelf
OSW	Offshore wind
RESTORE	Resources and Ecosystems Sustainability, Tourist Opportunities, and Revived Economies of the Gulf Coast States Act
SEFSC	NOAA Southeast Fisheries Science Center
SERO	Southeast Regional Office
U.S.	United States

## Executive Summary

This is the first Progress Report submitted by RWE Offshore US Gulf, LLC (the Company) for Lease Area Outer Continental Shelf (OCS-G -37334). Since obtaining the lease in November 2023, the Company has actively engaged stakeholders across the Lease Development Area to support responsible development. However, due to the ongoing review of offshore wind projects and lease areas, the current scope of development activities has been temporarily reduced. Despite this shift, the Company remains committed to continued outreach with Tribes/Tribal Nations, commercial and recreational fisheries, federal and state agencies, and all other stakeholders, consistent with the current and anticipated level of development intensity.

A summary of the engagement activities held with Tribes/Tribal Nations is provided in Section 2. A summary of stakeholder engagement is provided in Section 3, with Fisheries engagement presented in Section 3.1, Agency engagement presented in Section 3.2, and other stakeholder engagement presented in Section 3.3.



# 1 Background and Purpose

## 1.1 Background of the Gulf of America Offshore Wind Lease Area

In August 2023, RWE Offshore US Gulf, LLC (the Company) was selected as the provisional winner of a bid submitted to the U.S. Department of the Interior (DOI) Bureau of Ocean Energy Management (BOEM) for a Commercial Lease of Submerged Lands for Renewable Energy Development on the Outer Continental Shelf. The lease area (hereafter Lease or Lease Area) is designated as Outer Continental Shelf-Gulf 37334 (OCS-G 37334) and became effective on November 1, 2023, and was amended and restated January 16, 2025.

The Lease Area encompasses 102,480 acres of seabed in water depths ranging approximately from 49 to 79 feet (ft; 15 to 24 meters [m]) and 36 miles (mi; 58 kilometers [km] or 31 nautical miles [nm]) from its closest point to shore in Cameron Parish, Louisiana (Figure 1). When fully developed, the renewable energy capacity of the Lease Area is estimated to be 2 gigawatts (GW). The location of Lease Area OCS-G 37334 is shown on Figure 1.

This and other documents will also be posted to the BOEM webpage that is specifically related to Lease development activities.

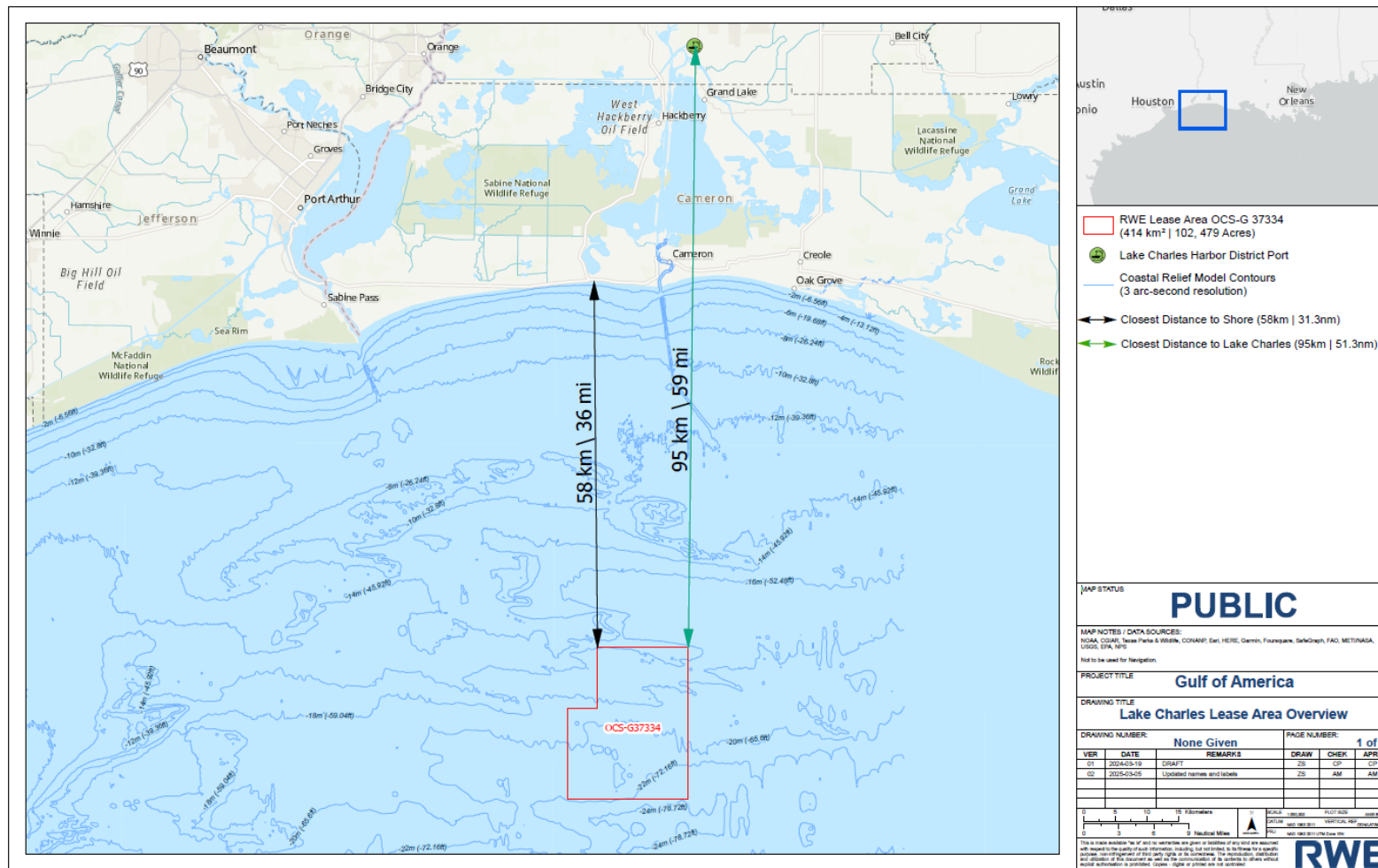


Figure 1 Lease area OCS-G 37334

## 1.2 Purpose of the Biannual Progress Reports

In accordance with Lease Addendum “C”, 3.1, the Company must submit a Progress Report to BOEM every six months during the preliminary period and through approval of the Construction and Operations Plan (COP).

The purpose of Progress Reports is to document the overall progress and engagement activities that have been undertaken during the reporting period and planned for continued outreach. Progress Reports include engagement with Tribes/Tribal Nations and other parties, which include (as applicable) federal, state, and local agencies; commercial and recreational fishing industries and stakeholders; educational and research institutions; environmental and public interest non-governmental organizations (eNGOs and NGOs); mariners, the maritime industry, and other ocean users; and other unidentified stakeholders.

This Progress Report is the first since the lease became effective on November 1, 2023<sup>1</sup>. It covers engagement activities that occurred between November 1, 2023, to May 1, 2025.

## 2 Tribes/Tribal Nations

The Company believes it is important to recognize Tribes/Tribal Nations as the original and continuing stewards of the lands and waters in which we work. We acknowledge and respect the enduring historical, cultural, and personal connections between Tribes/Tribal Nations to the region, both those Tribes/Tribal Nations currently residing in the region and those that were removed from it. We believe that the insights and knowledge of Tribes/Tribal Nations can and should play an important role in the clean energy transition, to help ensure that offshore renewable energy is developed in an environmentally, socially, and culturally sustainable manner.

Twenty-two Tribes/Tribal Nations, both federally recognized and non-federally recognized, were identified as having the potential for historical, cultural, or geographical ties to the area which encompasses the wind lease area and possible cable corridors and interconnections on shore.

A summary of engagement activities with Tribes/Tribal Nations held since the lease was executed and anticipated to be held is provided in Sections 2.1 through 2.4, below. These sections provide an overview of engagement with potentially affected federally recognized and state recognized Tribes/Tribal Nations.

---

<sup>1</sup> Pursuant to the Lease as initially issued and effective November 1, 2023, the first progress report was not due until the site assessment term. This term did not begin prior to issuance of the amended and restated lease in 2025, which requires submission of progress reports during the preliminary period. With the transition from lease terms to lease periods, a transition that aligns the Lease with amendments to BOEM's regulations, BOEM subsequently confirmed that the first Progress Report is due June 1, 2025.

The Company is maintaining a Native American Tribal Communication Plan (NATCP). The NATCP was accepted by BOEM in November 2024 after review by interested Tribes/Tribal Nations. The NATCP can be found here: [RWE Offshore US Gulf NATCP](#).

## 2.1 Summary of Engagements with Tribes/Tribal Nations

Engagements with Tribes and Tribal Nations during this first reporting period focused on introductions with the Project team and feedback requests on the NATCP. The Company is committed to connecting meaningfully with Tribal Councils, elders, and community leaders to better understand how to communicate and engage with Tribes/Tribal Nations most effectively. In addition to fulfilling the purpose of its Lease obligations related to the NATCP, the Project values the conversations these opportunities have presented to engage with and discuss shared priorities and relationship expectations.

The Company has shared communications, including a written invitation to engage, the Lease Area map and the draft NATCP with all 22 Tribes/Tribal Nations listed in Table 1. The Affected Tribes/Tribal Nations were identified through a stakeholder mapping effort that started with research into Tribes/Tribal Nations previously identified as consulting parties for either state or federal agencies for projects within Louisiana. The draft stakeholder mapping results were revised to include the names of 14 additional federally recognized Tribes/Tribal Nations that previously expressed interest in offshore wind consultations in the Gulf to BOEM/BSEE. For all 36 Tribes/Tribal Nations in the stakeholder mapping effort, information made publicly available by the individual Tribes/Tribal Nations through official websites, official social media pages, or other was used to identify self-professed interests in or connections to Louisiana. Review of organizations including NATHPO and the United South and Eastern Tribes, Inc. did not result in the identification of any additional federally recognized candidates for inclusion in the list of Affected Tribes. The list of Affected Tribes was developed from the 36 named Tribes/Tribal Nations included in the stakeholder mapping effort; however, only 22 were selected as having ties to the area. Other Tribes/Tribal Nations wishing to be engaged will be included but because of the limited work on the Gulf lease at this time, RWE will send out additional letters once development activities begin in earnest again.

Affected Tribes/Tribal Nations were contacted initially by phone and/or email to confirm the information for the most appropriate point of contact and confirm the preferred method of contact. Where phone calls or emails went unanswered, or information was unavailable, hard copies of the invitation to engage, lease area map, and draft NATCP were sent by certified mail. Follow up phone calls and emails have been made to all potentially affected Tribes and Tribal Nations. A summary of these engagement activities is provided in Table 1.

## 2.2 Potential Project Effects Related to Tribes/Tribal Nations' Interests

Two concerns that were raised during 2024 outreach were:

- Ensuring that the Company keeps Tribal specific information confidential (raised during the preparation of the NATCP)

- Ensuring that the Company protects information concerning the locations of any culturally sensitive sites (raised during draft review of the NATCP)
- Concern regarding the historic shrimp industry

The Project will continue to address these concerns as well as address any new concerns that may appear as the Lease is developed.

## **2.3 Upcoming Engagement Activities with Tribes and Tribal Nations**

During the next reporting period (May 1, 2025, to November 1, 2025), the Project will continue to engage with Tribes/Tribal Nations on the Company's general plans and ways to strengthen the communication processes between the Project and Tribes/Tribal Nations as envisioned in the NATCP. Above all, the Project will continue to focus its efforts on building one-on-one relationships through formal and informal engagement opportunities with Tribal communities. No specific meetings are planned currently but the Company is eager to continue with the working with Tribes/Tribal Nations and have meetings as necessary.

*Table 1 Summary of engagement activities between RWE Offshore Gulf, LLC, it's Project team and Tribes/Tribal Nations*

Focus of Discussion or Engagement	Tribe(s)	Summary of Engagement Activities and Discussion Topics	Follow-up Actions, Activities, Outcomes
Engagement Letters by Email	Federally Recognized Chitimacha Tribe of Louisiana, Coushatta Tribe of Louisiana, Jena Band of Choctaw, Tunica-Biloxi Tribe of Louisiana, Quapaw Tribe of Oklahoma, Mississippi Band of Choctaw Indians, Alabama Coushatta Tribe of Texas, Caddo Nation, Choctaw Nation of Oklahoma, Seminole Nation of Oklahoma, Seminole Tribe of Florida Non-Federally Recognized Adai Caddo Indians of Louisiana, Bayou Lafourche Band of BCCM, Choctaw-Apache Tribe of Ebarb, Clifton Choctaw Tribe of Louisiana, Four Winds Cherokee, Grand Caillou/Dulac Band of BCCM, Jean Charles Choctaw Nation, Louisiana Band of Choctaw, Natchitoches Tribe of Louisiana, Pointe-au-Chien Indian Tribe, United Houma Nation	Letter emailed extending offer to begin engagement with RWE	
Follow up by phone, email, and certified letters	Federally Recognized Chitimacha Tribe of Louisiana, Coushatta Tribe of Louisiana, Jena Band of Choctaw, Tunica-Biloxi Tribe of Louisiana, Quapaw Tribe of Oklahoma, Mississippi Band of Choctaw Indians, Alabama Coushatta Tribe of Texas, Caddo Nation, Choctaw Nation of Oklahoma, Seminole Nation of Oklahoma, Seminole Tribe of Florida Non-Federally Recognized Adai Caddo Indians of Louisiana, Bayou Lafourche Band of BCCM, Choctaw-Apache Tribe of Ebarb, Clifton Choctaw Tribe of Louisiana, Four Winds Cherokee, Grand Caillou/Dulac Band of BCCM, Jean Charles Choctaw Nation, Louisiana Band of Choctaw, Natchitoches Tribe of Louisiana, Pointe-au-Chien Indian Tribe, United Houma Nation	Follow-up communications for engagements.	
Email and certified mail	Federally Recognized Chitimacha Tribe of Louisiana, Coushatta Tribe of Louisiana, Jena Band of Choctaw, Tunica-Biloxi Tribe of Louisiana, Quapaw Tribe of Oklahoma, Mississippi Band of Choctaw Indians, Alabama Coushatta Tribe of Texas, Caddo Nation, Choctaw Nation of Oklahoma, Seminole Nation of Oklahoma, Seminole Tribe of Florida Non-Federally Recognized Adai Caddo Indians of Louisiana, Bayou Lafourche Band of BCCM, Choctaw-Apache Tribe of Ebarb, Clifton Choctaw Tribe of Louisiana, Four Winds Cherokee, Grand Caillou/Dulac Band of BCCM, Jean Charles Choctaw Nation, Louisiana Band of Choctaw, Natchitoches Tribe of Louisiana, Pointe-au-Chien Indian Tribe, United Houma Nation	Provided draft NATCP for review and comment	

Focus of Discussion or Engagement	Tribe(s)	Summary of Engagement Activities and Discussion Topics	Follow-up Actions, Activities, Outcomes
Houma Virtual Meeting with Project team	United Houma Nation - State recognized	Introductory meeting and review of the NATCP	
Tribal Relations Introduction Letter	Federally Recognized Chitimacha Tribe of Louisiana, Coushatta Tribe of Louisiana, Jena Band of Choctaw, Tunica-Biloxi Tribe of Louisiana, Quapaw Tribe of Oklahoma, Mississippi Band of Choctaw Indians, Alabama Coushatta Tribe of Texas, Caddo Nation, Choctaw Nation of Oklahoma, Seminole Nation of Oklahoma, Seminole Tribe of Florida Non-Federally Recognized Adai Caddo Indians of Louisiana, Bayou Lafourche Band of BCCM, Choctaw-Apache Tribe of Ebarb, Clifton Choctaw Tribe of Louisiana, Four Winds Cherokee, Grand Caillou/Dulac Band of BCCM, Jean Charles Choctaw Nation, Louisiana Band of Choctaw, Natchitoches Tribe of Louisiana, Pointe-au-Chien Indian Tribe, United Houma Nation	Introduction letter sent by email to listed Tribes/Tribal Nations	
Phone call with Tribal Relations Manager	Alabama-Coushatta Tribe of Texas Tribal Historic Preservation Officer	Call focused on RWE's vision for tribal engagement and identified potential areas for partnership, including renewable energy initiatives, community education, language preservation, and intellectual property protections	



## 3 Commercial and Recreational Fisheries

The Project engaged with various commercial and recreational fishery constituents identified as potentially interested in or affected by the Lease Area. Engagement strategies have included one-on-one conversations, small and large group meetings, and presentations and participation at formal meetings, hearings, and briefings. Engagements have included in-person, hybrid, and virtual formats (e.g., video, webinar, phone calls, & text).

The Company is maintaining a Fisheries Communication Plan (FCP) ([Gulf Fisheries Communication Plan](#)). The FCP was accepted by BOEM in August 2024 and has continued to build internal capacity and expand outreach and engagement activities. The FCP was also translated to Vietnamese based on discussions with the Southern Shrimp Alliance who indicated a significant portion of their fishermen speak Vietnamese as their primary language.

A summary of these engagement activities with Commercial and Recreational Fisheries and associated stakeholders for the reporting period provided in Section 3.1. Please note that most engagement activities cover multiple topics and have potential relevance to multiple phases of development.

### 3.1 Summary of Engagements with Fisheries

Between November 1, 2023, and May 1, 2025, the Project had more than 70 direct substantive engagements with at least 80 fishery participants and constituents. This number does not include informal and electronic communications (e.g., emails, phone calls, texts) that supported ongoing dialogue, relationship building, and information sharing. Below provides a written summary and further detail on engagements listed in Table 2.

In particular, we would like to highlight a presentation RWE gave to the Gulf Fisheries Management Council in which we provided the Council and attendees with a Company introduction, details about the siting and leasing process, a summary of our fisheries characterization exercise, and an overview of the FCP. We then welcomed feedback and input on the FCP. Another key engagement is a bi-monthly call we hold with the National Oceanic Atmospheric Administration (NOAA) Southeast Regional Office (SERO) and NOAA Southeast Fisheries Science Center (SEFSC) where we check in with our respective groups on fisheries and fisheries science, information sharing, opportunities for collaboration, etc.

#### 3.1.1 Collaboration, Knowledge, and Capacity Building

Engagements with state and federal agencies, academic institutions, and research entities to inform development activities and proactively identify opportunities for collaboration continued during the reporting period and included the following:

- Collaborated with NOAA National Centers for Coastal Ocean Science, BOEM Environmental Studies Program, University Miami Coop. Institute of Marine and Atm. Sciences / NOAA Southeast Fisheries Science Center Affiliate, BOEM Gulf of America



Regional Office, Louisiana State University, University of Florida, Gulf of America Coastal Ocean Observing System, University of California, Santa Barbara, Bureau of Safety and Environmental Enforcement (BSEE) Office of Environmental Compliance, Department of Energy (DOE) Wind Energy Technology Office, DOE Wind Energy, National Wildlife Federation, and Intertidal Agency on a RESTORE proposal to support the analysis of long-term habitat use and connectivity of marine life at artificial structures in the Gulf.

- Participated in University of New Orleans Environmental Roundtable in January 2024.
- Bimonthly calls with SERO/SEFSC for reciprocal education/data planning.
- Distributed FCP to established fisheries constituents.

Table 2 Fishery Engagements with the Project and the Project team during the reporting period

Focus of Discussion or Engagement	Party(ies) (Number of Engagements)	Summary of Engagement Activities and Discussion Topics	Follow-up Actions, Activities, Outcomes
<p>Communication strategy updates; priority issues for commercial fishing community; more detailed characterization of fisheries</p> <p>(November 1 2023- April 30, 2025)</p>	<p>Commercial (21); includes commercial fishermen, shoreside businesses and infrastructure, fishing associations, and trade groups</p>	<ul style="list-style-type: none"> <li>Fisheries Communications Plan</li> <li>Communication and engagement strategies, tools, and preferences</li> <li>Seasonality, spatial distribution, and operational details for commercial fisheries, especially in and around the lease area</li> <li>BOEM siting process</li> <li>Various questions and concerns from the commercial fishing industry (decommissioning, project timeline, fishing access, etc.)</li> </ul>	<ul style="list-style-type: none"> <li>Incorporated information from the fleet into the Fisheries Communications Plans</li> <li>Future opportunities to engage the fleet about the offshore wind (OSW) development and operational processes</li> <li>Completed and distributed the Fisheries Communications Plan to established commercial fishing contacts in the Gulf</li> </ul>
<p>Communication strategy updates; priority issues for recreational fishing community; more detailed characterization of fisheries</p> <p>(November 1 2023- April 30, 2025)</p>	<p>Recreational (8); includes recreational fishermen, charter/for-hire captains, recreational fishing association</p>	<ul style="list-style-type: none"> <li>Fisheries Communications Plan</li> <li>Communication and engagement strategies, tools, and preferences</li> <li>Seasonality, spatial distribution, and operational details for recreational fisheries, especially in and around the lease area</li> <li>BOEM siting process</li> </ul>	<ul style="list-style-type: none"> <li>Incorporated information from the fleet into the Fisheries Communications Plans</li> <li>Future opportunities to engage the fleet about the OSW development and operational processes</li> <li>Completed and distributed the Fisheries Communications Plan to all recreational and for-hire fishing contacts in the Gulf</li> </ul>

Focus of Discussion or Engagement	Party(ies) (Number of Engagements)	Summary of Engagement Activities and Discussion Topics	Follow-up Actions, Activities, Outcomes
		<ul style="list-style-type: none"> <li>Various questions and concerns from the recreational and for-hire fishing industry (decommissioning, project timeline, fishing access, etc.)</li> </ul>	
<p>Introduction to Project and Project team; communication strategies; monitoring and research activities, Fisheries Communications Plan.</p> <p>(November 1 2023- April 30, 2025)</p>	Academic or Research Institutions and Programs (7)	<ul style="list-style-type: none"> <li>Research and monitoring activities currently occurring in the Gulf of America</li> <li>Potential research and monitoring opportunities for partnering</li> </ul>	<ul style="list-style-type: none"> <li>Incorporated information from the parties into the Fisheries Communications Plans</li> <li>Completed and distributed the Fisheries Communications Plan to all research contacts in the Gulf</li> </ul>
<p>Introduction to Project and Project team; communication strategies; monitoring and research activities, Fisheries Communications Plan strategy.</p> <p>(November 1 2023- April 30, 2025)</p>	State and federal fisheries regulatory agencies (30)	<ul style="list-style-type: none"> <li>Fisheries Communications Plan</li> <li>Communication and engagement strategies, tools, and preferences</li> <li>Seasonality, spatial distribution, and operational details for recreational fisheries, especially in and around the lease area</li> </ul>	<ul style="list-style-type: none"> <li>Incorporated information from fisheries' agencies into the Fisheries Communications Plan</li> <li>Regular (bimonthly) meetings to be held with SERO/SEFSC with a goal of two-way education and identification of areas for potential collaboration</li> <li>Completed and distributed the Fisheries Communications Plan to fisheries agency contacts in the Gulf</li> </ul>
<p>Introduction to Project and Project team; communication strategies; monitoring and research activities, Fisheries Communications Plan strategy.</p> <p>(November 1 2023- April 30, 2025)</p>	NGO (ENGO and other organization) (6)	<ul style="list-style-type: none"> <li>Fisheries Communications Plan</li> <li>Communication and engagement strategies, tools, and preferences</li> </ul>	<ul style="list-style-type: none"> <li>Incorporated information from the parties into the Fisheries Communications Plan</li> </ul>

### **3.2 Potential Project Effects Raised by Commercial and Recreational Fisheries**

The Project identified several categories of potential concerns raised by fisheries participants and fishing communities during this reporting period, which can be seen in Table 3. The Project Team is actively working to incorporate concerns related to the marine environment, safety, and access into the Project planning process across the Project's workstreams.

*Table 3 Potential project concerns and effects raised by Commercial and Recreational Fisheries to the Project.*

Topic	Concern(s)	Address or Response to Concern
Ecological/Engineering	Concerns about potential oil leakage from turbines, downstream effects (larval distribution), and impacts following decommissioning. Many constituents communicated positive expectations regarding artificial reef effects on the ecosystem.	BOEM, as the managing body for OSW activities, assesses the management of spill/leakage risk for all OSW systems considered by the agency. A 2013 study conducted by BOEM found that “the mostly likely types of releases... would cause minimal environmental consequences, which would be limited spatially and temporally to the vicinity of the point of release.” They also found the probability of a catastrophic event to be extremely small with a moderate environmental impact, were such an event to occur.
		Few studies examining the potential impacts of offshore wind on larval dispersal exist, but impacts are expected to be localized around turbines, including potentially positive interactions, such as those explored in a recent model of sea scallop larval dispersal near the Nantucket Lightship Closed Area linked here; <a href="#">Potential impacts of offshore wind energy development on physical processes and scallop larval dispersal over the US Northeast shelf - ScienceDirect</a>
		Some constituents were concerned that potentially valuable ecological habitat created by OSW structures would be lost through the decommissioning process. Decommissioning activities and extent will be determined through a regulated public process including BSEE, BOEM, U.S. Coast Guard, NOAA, and the OSW developer(s). Constituents will have an opportunity to weigh in on this process at that time.
Safety	Concerns primarily concerned the OSW turbine’s ability to hold up to hurricane conditions commonly experienced in the Gulf of America and the potential fallout from demolished wind turbines.	This is a primary concern of developers, as well. Creating an optimized wind turbine that can function efficiently in an environment with low annual wind speeds and withstand periodic hurricanes will be an engineering priority during the design phase. Developers will address this engineering consideration in the Construction and Operations Plan.
Inclusion	One group expressed concern and frustration in the level to which they were	RWE will continue to engage and assist in educating our fisheries constituents regarding OSW development and permitting processes.

Topic	Concern(s)	Address or Response to Concern
	involved/consulted with during the BOEM siting process; however, another group expressed high satisfaction with the level to which they were involved/consulted throughout the initial siting process.	
<b>Opportunities for collaboration</b>	Multiple fisheries constituents expressed a desire to be considered not just as a constituent, but as a partner in the OSW story in the Gulf of America. Many are excited by the possibility of new artificial habitat in the Gulf of America and see the potential economic benefits and electrical stability OSW offers. Many see the potential community benefits from having OSW as a neighboring industry in the Gulf.	<p>Collaborated with multiple government and academic institutions on a RESTORE proposal to support the analysis of long-term habitat use and connectivity of marine life at artificial structures in the Gulf of America.</p> <p>Plan to continue engagement with fisheries constituents to identify areas of mutual interest.</p>

### **3.3 Upcoming Engagement Activities with Commercial and Recreational Fisheries**

While specific meetings are not planned at this time, some anticipated engagement activities are listed below.

- Quarterly virtual meetings with SERO/SEFSC to provide project updates, learn about survey/data collection processes in the Gulf of America, and find opportunities for mitigating potentially displaced survey effort within/adjacent to the lease area.
- Developing and distributing educational materials regarding any upcoming OSW development and permitting processes to fisheries stakeholders.
- Continued engagement with state and federal fisheries agencies.

## 4 Federal, State, and Local Agencies

Lease Addendum “C”, 3.1.3, details the requirements for the Company to engage and communicate with federal, state, and local regulatory and consulting agencies (herein defined as “the Agencies”). The Project will proactively engage with the Agencies at every stage of development to receive feedback and address comments. This section includes other outreach conducted with Agencies related to the Lease Area, which may also overlap in other sections.

The Company is maintaining an Agency Communication Plan ([Gulf Agency Communication Plan](#)). The ACP was accepted by BOEM in August 2024.

### 4.1 Summary of Engagements with the Agencies

The main focus during engagements with agencies during this reporting period was introducing the Lease Area and Project team and to provide an overall schedule.

*Table 4 Agency Engagements During the Reporting Period*

Focus of Discussion or Engagement	Party(ies)	Summary of Engagement Activities and Discussion Topics	Follow-up Actions, Activities, Outcomes
BOEM and RWE meet on Gulf lease December 12, 2023	BOEM, RWE	Introduced Project team and BOEM attendees. Provided high-level schedule and project approach. Communication protocols desired outreach.	
Discuss timing of first progress report April 1, 2024	BOEM, RWE	Discussed when RWE should submit its first Progress Report.	BOEM took action to communicate to RWE when first Progress Report would be due.
Status of Communication Plans April 23, 2024	BOEM, RWE	Provided updated on Fisheries, Agency, and Native American Tribal Communications Plans.	BOEM requested that RWE reach out to the Texas Coastal Zone Management program to provide an introduction and project approach.
Introductory Meeting with Federal and State (LA) agencies April 30, 2024	Federal and State agencies, RWE	Introduced RWE and project team, solicited feedback on the ACP and how to best engage with agencies, reviewed the lease area and shared high-level schedule.	Respond to follow up questions from the introductory meeting.
Introductory meeting with Texas General Land Office (GLO) September 27, 2024	GLO staff and RWE	Introduced RWE and project team, reviewed the lease area, and provided high-level schedule	



## 4.2 Potential Project Effects Raised by the Agencies

The Project has engaged with local, state, and federal agencies on potential questions, concerns, and opportunities related to proposed project development. These stakeholders have identified the following areas for continued discussion:

- The Gulf has significant sand resources and the Project will need to take these under consideration during development of the Lease and cable corridors

## 4.3 Upcoming Engagement Activities with the Agencies

During the next reporting period, the Project anticipates the following engagement activities are likely to occur with the Agencies:

- Annual project update to all agencies in summer 2025.

## 5 Other Stakeholders

Other stakeholder entities that could potentially be affected by development activities may include:

- Coastal communities;
- Educational and research institutions;
- eNGOs and NGOs;
- Mariners and the maritime industry;
- Ocean users;
- Submarine cable operators; and
- Underserved communities

Not all of these groups will be contacted during each Progress Report and some engagements may be captured in the activities summarized in other sections.

### 5.1 Summary of Engagement Activities with Other Stakeholders

In our engagement strategy for the development of offshore wind in Louisiana, the Company has placed a strong emphasis on cultivating solid support from key local stakeholders. This is accomplished by maximizing the positive impacts on local organizations while harmoniously integrating our efforts with existing local initiatives centered around offshore wind. The multifaceted approach is dedicated to educating stakeholders about the intricacies of the offshore wind industry and the specific objectives of the development of the Lease. By advancing the commercial viability of offshore wind, we endeavor to contribute substantially to the state's economic development goals. Our concerted efforts aim to foster a collaborative environment that bolsters both the project's success and the broader community's prosperity. Specific engagements include the following:

- LA Wind Week Engagements
- Entergy Memorandum of Understanding Engagement
- H2theFuture Engagement
- Gulf Louisiana Offshore Energy Engagement
- NOAA Hazardous Weather Testbed Grant Engagement
- Nunez Engagement
- LA Offshore Wind Roadmap engagement

Further engagement activities with other stakeholders can be found in Table 5.

Table 5 Other stakeholder engagements during the reporting period

Focus of Discussion or Engagement	Summary of Engagement Activities and Discussion Topics
City of Lake Charles (January 2024)	Overview of RWE and listen to the City's priorities for renewable energy
Gulf Offshore Logistics (February 2024)	GOL is looking to add OSW to their portfolio of industries they'd like to serve.
Gulf of America Shareholder's Alliance (April 2024)	Discussed overlap with fishery, general concerns, potential for support and partnership, especially regarding communications. Expressed cautious optimism and support for the project.
Gulf Island Fabrication (April 2024)	GIF interest in supplying RWE and other OSW projects
Port Fourchon (April 2024)	Understand Port Fourchon investments needed in infrastructure to accommodate offshore wind
Oceantic International Partnering Forum (April 2024)	Sponsored and participated in the yearly conference
National Wildlife Federation (NWF) (April 2024)	NWF ENGO coalition and their work to support the responsible development of OSW in the Gulf.
Alliance for Affordable Energy (July 2024)	General offshore wind topics, industry developments, and offtake opportunities
BlueGreen Alliance August 2024	Discussion of labor union jobs
Sponsor of Louisiana Wind Week (January 2024 and 2025)	Event participation and general engagement

## 5.2 Potential Project Effects Related to Other Stakeholders

The Project has engaged with local communities and stakeholders on potential questions, concerns, and opportunities related to proposed project development. These stakeholders have identified the following areas for continued discussion:

- Positive effect of utilizing existing ports and making what may be considered minimal upgrades to support offshore wind

## 5.3 Upcoming Engagement Activities With Other Stakeholders

During the next reporting period, the Project anticipates continuing engagement with interested parties reflected in Table 5 as well as new entities and stakeholders that are not presently reflected in the table above. The Project will continue to identify communities with limited proficiency in English and develop strategies to reach them through other means, such as translating materials in other languages (e.g. translating the FCP into Vietnamese), and engaging in culturally diverse community events when possible. No specific meetings are planned currently but the Company will continue to work with key stakeholders in the area and have meetings as necessary.

## 5.4 Coordination with other leaseholders

Currently, there are no other federal leaseholders in the Gulf. However, a state operating agreement exists and the Project has made introductions but no formal meetings have been conducted.

## 6 Survey Planning

The Company does not have a timeline of when surveys, either onshore or offshore, will begin. No surveys are planned for 2025.

## 7 Transmission Planning

Transmission planning and export cable routing has not yet begun, but will include engagement with Tribes and all other stakeholders as part of the planning process.

## Appendix A – Project Team Contact Information

Name/Title	Role	Contact Information
Daniel Sieger Development Director	Oversees development of the Project including market strategy	<a href="mailto:Daniel.Sieger@RWE.com">Daniel.Sieger@RWE.com</a> (857) 472-3459
Amanda Mayhew Senior Permitting Manager	Manages permitting for the Project: primary POC for the ACP	<a href="mailto:Amanda.Mayhew@RWE.com">Amanda.Mayhew@RWE.com</a> (804) 536-8002
Rick Robins Director of Marine Affairs and Fisheries Liaison (Acting)	Oversees marine affairs and commercial and recreational fisheries engagement of the Project	<a href="mailto:Rick.Robins@RWE.com">Rick.Robins@RWE.com</a> (757) 876-3778
Andrew Meredith Director of Labor Relations	Primary POC for labor engagement activities	<a href="mailto:Andrew.Meredith@RWE.com">Andrew.Meredith@RWE.com</a> (773) 980-0487