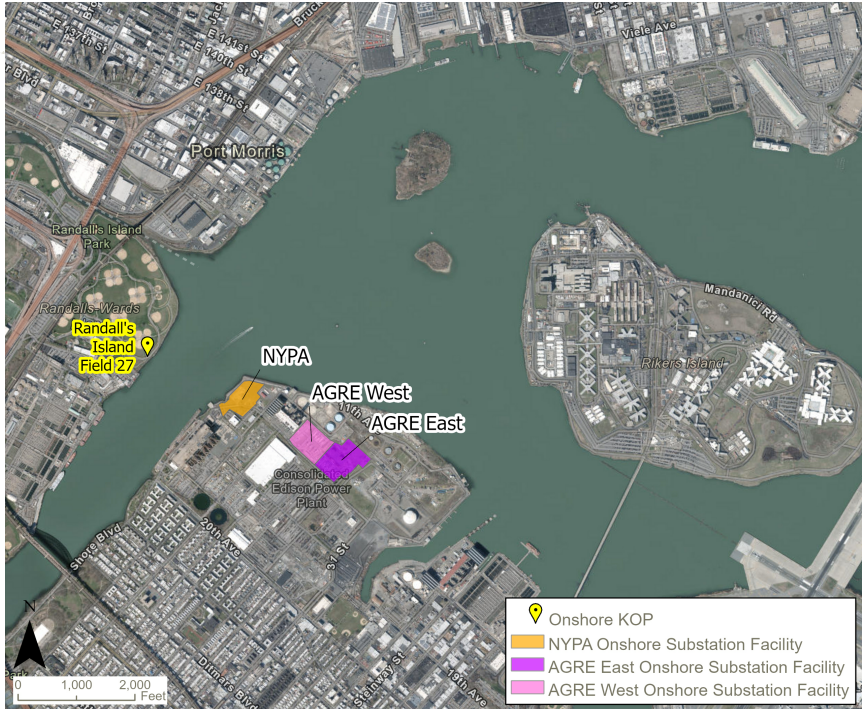


Panoramic Photograph



Regional Map



Source: Esri, CGIAR, USGS, Source: Esri, HERE, Garmin, FAO, NOAA, OpenStreetMap contributors, and the GIS User Community

Contextual Map



Source: Esri, CGIAR, USGS, Source: Esri, HERE, Garmin, FAO, NOAA, OpenStreetMap contributors, and the GIS User Community

Photograph Information

Viewpoint Location:	Randall's Island Field 27
Date of Photograph:	4-22-21
Time of Photograph:	11:02 am
Weather Condition:	Cloudy
Latitude:	40°47'30.45"N
Longitude:	-73°54'56.52"W
Viewing Direction:	Southeast
Ground Elevation + Tripod Height:	6.5 Feet

# KOP-NY01 | Randall's Island Field 27 | Beacon Wind Project

Baseline Conditions Overview





## **KOP-NY01 | Randall's Island Field 27 | Beacon Wind Project**

Baseline Conditions





## **KOP-NY01 | Randall's Island Field 27 | Beacon Wind Project**

Simulated Conditions - Scenario 1: AGRE





## **KOP-NY01 | Randall's Island Field 27 | Beacon Wind Project**

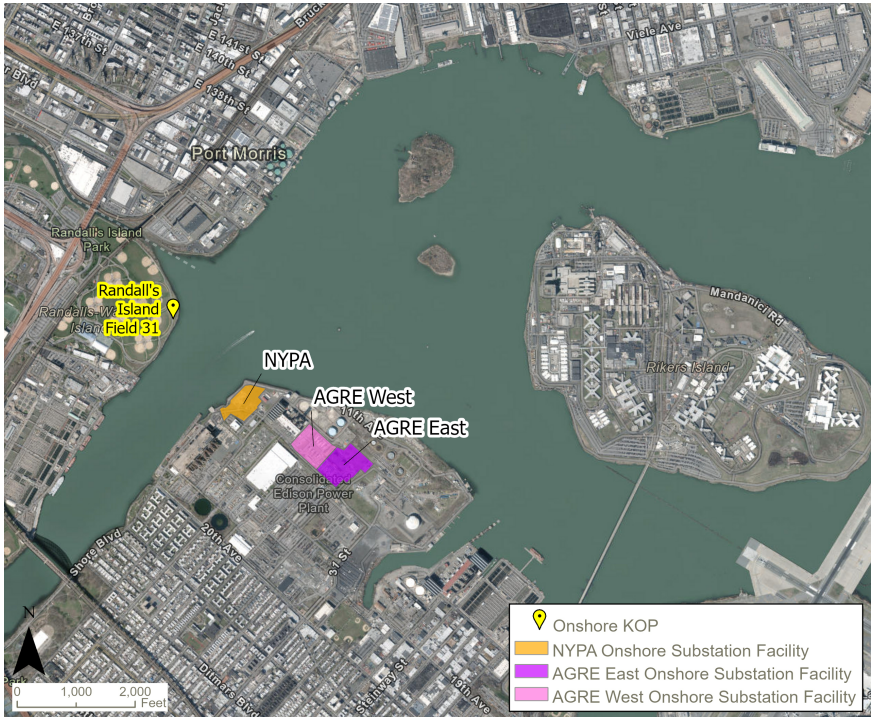
Simulated Conditions - Scenario 2: AGRE East & NYPA



Panoramic Photograph



Regional Map



Source: Esri, CGIAR, USGS, Source: Esri, HERE, Garmin, FAO, NOAA, OpenStreetMap contributors, and the GIS User Community

Contextual Map



Source: Esri, CGIAR, USGS, Source: Esri, HERE, Garmin, FAO, NOAA, OpenStreetMap contributors, and the GIS User Community

Photograph Information

Viewpoint Location:	Randall's Island Field 31
Date of Photograph:	4-22-21
Time of Photograph:	10:22 am
Weather Condition:	Cloudy
Latitude:	41°15'9.19 N
Longitude:	-73°54'50.82"W
Viewing Direction:	Southeast
Ground Elevation + Tripod Height:	6.5 Feet

KOP-NY02 | Randall's Island Field 31 | Beacon Wind Project

Baseline Conditions Overview





## **KOP-NY02 | Randall's Island Field 31 | Beacon Wind Project**

Baseline Conditions





## **KOP-NY02 | Randall's Island Field 31 | Beacon Wind Project**

Simulated Conditions - Scenario 1: AGRE





## **KOP-NY02 | Randall's Island Field 31 | Beacon Wind Project**

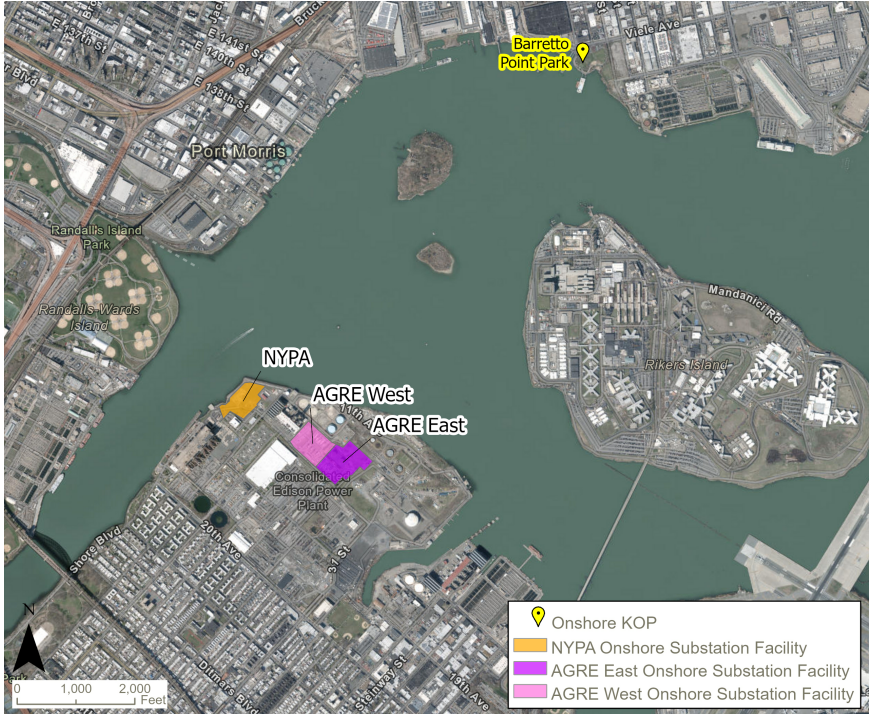
Simulated Conditions - Scenario 2: AGRE East & NYPA



Panoramic Photograph



Regional Map



Source: Esri,CGIAR, USGS, Source: Esri, HERE, Garmin, FAO, NOAA, OpenStreetMap contributors, and the GIS User Community

Contextual Map



Source: Esri,CGIAR, USGS, Source: Esri, HERE, Garmin, FAO, NOAA, OpenStreetMap contributors, and the GIS User Community

Photograph Information

Viewpoint Location:	Barretto Point Park
Date of Photograph:	4-22-21
Time of Photograph:	9:03 am
Weather Condition:	Cloudy
Latitude:	40°48'19.09"N
Longitude:	-73°53'19.48"W
Viewing Direction:	Southwest
Ground Elevation + Tripod Height:	14.5 Feet

KOP-NY03 | Barretto Point Park | Beacon Wind Project

Baseline Conditions Overview





## **KOP-NY03 | Barretto Point Park | Beacon Wind Project**

Baseline Conditions





## **KOP-NY03 | Barretto Point Park | Beacon Wind Project**

Simulated Conditions - Scenario 1: AGRE





## **KOP-NY03 | Barretto Point Park | Beacon Wind Project**

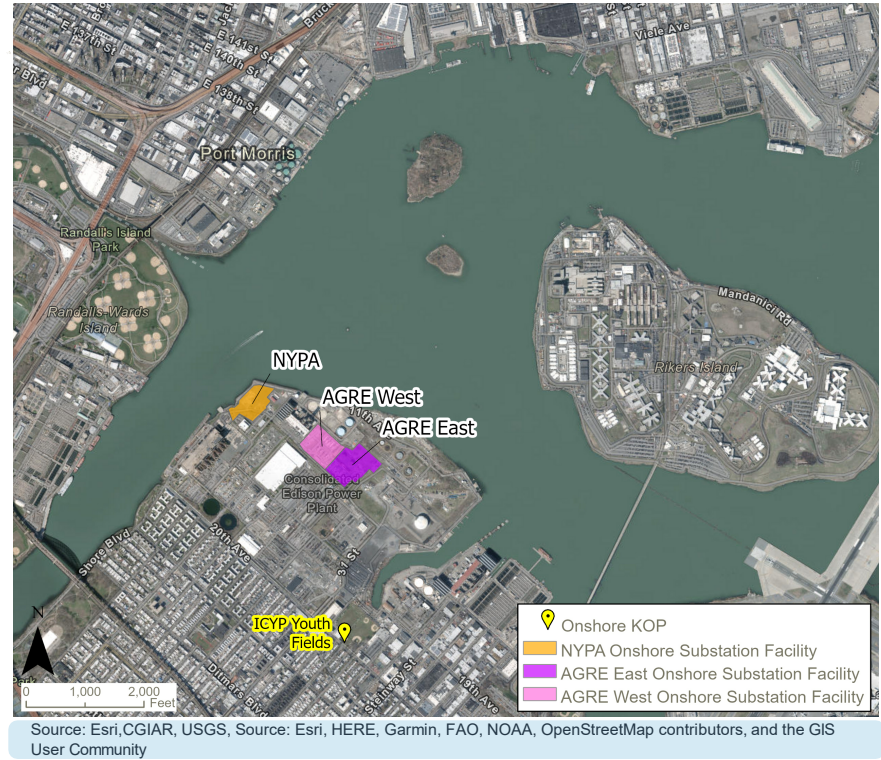
Simulated Conditions - Scenario 2: AGRE East & NYPA



Panoramic Photograph



Regional Map



Contextual Map



Photograph Information

Viewpoint Location:	ICYP Youth Fields
Date of Photograph:	11-5-21
Time of Photograph:	10:30 am
Weather Condition:	Clear
Latitude:	40°46'42.71"N
Longitude:	-73°54'15.83"W
Viewing Direction:	North
Ground Elevation + Tripod Height:	19.5 Feet





## **KOP-NY04 | ICYP Youth Fields | Beacon Wind Project**

Baseline Conditions





Red dashed lines indicate location of substation not visible due to terrain and existing structures

# KOP-NY04 | 20th Avenue Field | Beacon Wind Project

Simulated Conditions - Scenario 1: AGRE





Red dashed lines indicate location of substation not visible due to terrain and existing structures

## KOP-NY04 | 20th Avenue Field | Beacon Wind Project

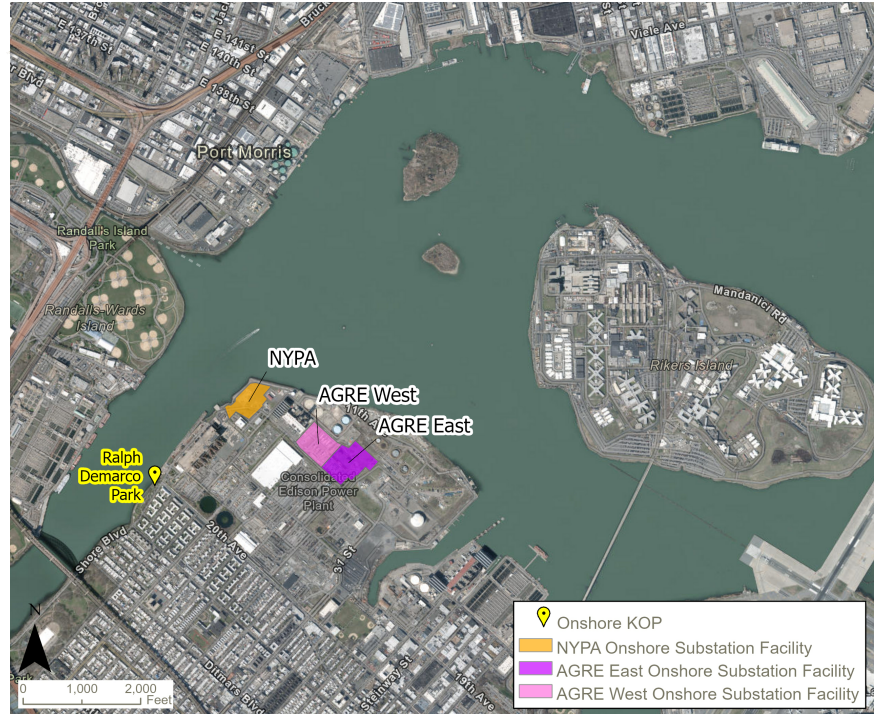
Simulated Conditions - Scenario 2: AGRE East & NYPA



Panoramic Photograph



Regional Map



Source: Esri, CGIAR, USGS, Source: Esri, HERE, Garmin, FAO, NOAA, OpenStreetMap contributors, and the GIS User Community

Contextual Map



Source: Esri, CGIAR, USGS, Source: Esri, HERE, Garmin, FAO, NOAA, OpenStreetMap contributors, and the GIS User Community

Photograph Information

Viewpoint Location:	Ralph Demarco Park
Date of Photograph:	11-05-21
Time of Photograph:	11:30 am
Weather Condition:	Clear
Latitude:	40°47'9.62"N
Longitude:	-73°54'55.38"W
Viewing Direction:	Northeast
Ground Elevation + Tripod Height:	17.5 Feet

KOP-NY05 | Ralph Demarco Park | Beacon Wind Project

Baseline Conditions Overview





## KOP-NY05 | Ralph Demarco Park | Beacon Wind Project

Baseline Conditions





Red dashed lines indicate location of substation not visible due to terrain and existing structures

## KOP-NY05 | Ralph Demarco Park | Beacon Wind Project

Simulated Conditions - Scenario 1: AGRE





Red dashed lines indicate location of substation not visible due to terrain and existing structures

## KOP-NY05 | Ralph Demarco Park | Beacon Wind Project

Simulated Conditions - Scenario 2: AGRE East & NYPA