



**BOEM** Bureau of  
Ocean Energy Management

# BOEM California Intergovernmental Renewable Energy Task Force Meeting

June 3, 2022

BOEM Pacific Regional Office

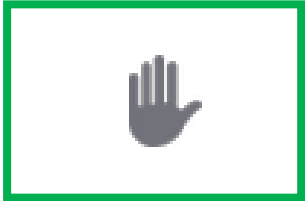
Facilitated by Jenna Tourjé-Maldonado, Kearns & West



# Zoom Webinar Instructions – Task Force Members



- Click the mute button at the bottom of the screen to mute yourself when not speaking.



- The raised hand button is a small icon located at the bottom right of the participant pod. You may use this button to enter the discussion queue. Please lower your hand once you are done speaking.



- You can share questions and comments using the chat pod in the bottom right of the webinar window.



- Task Force members are encouraged to keep their webcam on throughout the Task Force Meeting. If you cannot keep your webcam on the entire time, we kindly request you to turn on your webcam when asking a clarifying question.
- Closed captioning is available. Please click on the "CC" button at the bottom right of your Zoom webinar screen.



# Zoom Webinar Instructions – Members of the Public



- Members of the public will be muted throughout the Task Force webinar and will not be able to unmute themselves.



- Members of the public will have the opportunity to share verbal comments during the public input opportunity.



- Use the chat function within Zoom for any technical difficulties.
- Closed captioning is available. Please click on the "CC" button at the bottom right of your Zoom webinar screen.



# Zoom Webinar Instructions – Technical Assistance

- If you encounter any technical difficulties throughout the webinar, please message or email Bushra Bangee at [bbangee@kearnswest.com](mailto:bbangee@kearnswest.com) or message Eunice Lee (Host) using Zoom chat.
- Please use the chat *only* for requests for technical assistance.
- If you are participating by phone, raise your hand for help by **dialing \* 9**.



# Process Guidelines

- “Honor” the agenda.
- Participate actively and respectfully.
- Speak in order; facilitator will mind the queue.
- Speak clearly into the mic/phone for others to hear you.
- Provide your name and affiliation each time you speak.
- Please select the mute button to mute your audio to the phone when you’re not speaking.



# Welcome & Opening Remarks

---

Amanda Lefton, Director, *BOEM*

Karen Douglas, Senior Advisor for Energy, *Office of the Governor*

Jenna Tourje-Maldonado, Kearns & West



# Meeting Objectives

1. Provide an update to Task Force members on activities relevant to offshore wind energy since the July 2021 Task Force meeting.
2. Provide Task Force members with information on the California Proposed Sale Notice (PSN).
3. Outline next steps for offshore wind off California's north and central coasts, including opportunities to provide input into the process through the anticipated lease sale.



# Agenda

Time (PT)	Agenda Item
9:00 a.m.	Webinar Instructions & Guidance
9:05 a.m.	Welcome, Opening Remarks & Introductions
9:15 a.m.	Agenda Review, Purpose of Meeting
9:20 a.m.	Offshore Wind Activities Update, Overview of PSN, Proposed Bidding Credits and Auction Format, Next Steps
10:00 a.m.	Task Force – Questions and Comments on the PSN
10:30 a.m.	Task Force Updates
10:50 a.m.	Break
11:05 a.m.	Task Force Updated Continued
11:35 a.m.	Task Force – Questions and Discussions
11:55 a.m.	Closing Remarks and Adjourn Task Force Meeting
12:00 p.m.	Public Input Opportunity





# INTRODUCTIONS



# Introductions – BOEM

## Headquarters

- Amanda Lefton, BOEM Director
- Marty Heinze, Economist

## Pacific Regional Office

- Doug Boren, Regional Director
- Nesy Sumait, Office of Strategic Resources Regional Supervisor
- Jennifer Miller, Renewable Energy Section Acting Chief
- Sara Gultinan, Renewable Energy Specialist
- Lisa Gilbane, Environmental Assessment Section Chief
- John Romero, Public Affairs Officer
- Abigail Ryder, NEPA Coordinator



# Introductions – Tribal Governments

- Bear River Band of the Rohnerville Rancheria
- Blue Lake Rancheria
- Cher-Ae Heights Indian Community of the Trinidad Rancheria
- Coyote Valley Band of Pomo Indians
- Manchester Point Arena Band of Pomo Indians
- Pechanga Band of Luiseño Indians
- Resighini Rancheria
- Santa Ynez Band of Chumash Indians
- Soboba Band of Luiseño Indians
- Sycuan Band of the Kumeyaay Nation
- Tolowa Dee-ni' Nation
- Viejas Band of Kumeyaay Indians
- Wiyot Tribe
- Yurok Tribe



# Introductions – State and Federal Task Force Members

## State Agencies

- CA Coastal Commission
- CA Dept of Conservation
- CA Dept of Fish and Wildlife
- CA Dept of Water Resources
- CA Energy Commission
- CA Environmental Protection Agency
- CA Labor & Workforce Development Agency
- CA Natural Resources Agency
- CA Ocean Protection Council
- CA Public Utilities Commission
- CA State Historic Preservation Office
- CA State Lands Commission
- CA State Parks
- CA State Water Resources Control Board

- CA Workforce Development Board
- Governor's Office of Planning & Research
- Office of Governor Gavin Newsom

## Federal Agencies

- Bureau of Indian Affairs
- Bureau of Land Management
- Bureau of Safety and Environmental Enforcement
- Dept of Defense Siting Clearinghouse
- Dept of Energy
- Federal Aviation Administration
- Federal Communications Commission
- Federal Energy Regulatory Commission

- National Aeronautics and Space Administration
- National Oceanic & Atmospheric Administration
  - National Marine Fisheries Service
  - Office for Coastal Management
  - Office of National Marine Sanctuaries
- National Park Service
- Navy Region Southwest
- Small Business Administration
- U.S. Army Corps of Engineers
- U.S. Coast Guard
- U.S. Environmental Protection Agency Region 9
- U.S. Fish & Wildlife Service
- U.S. Geological Survey

# Introductions – Elected Officials & Local Governments

## U.S. Congress

- Jared Huffman – Congressman, U.S. House of Representatives, 2nd Congressional District of California
  - Alternate: Ciara Emery, Field Representative

## Local Governments

- City of Arcata - Sarah Schaefer, Vice-Mayor
  - Alternate: Karen Diemer, City Manager
- City of Eureka – Scott Bauer, City Councilmember, 4th Ward
- Crescent City Harbor District – Wes White, Harbor Commissioner; Brian Stone, Harbor Commissioner
- Humboldt Bay Harbor District – Richard Marks, Commissioner
  - Alternate: Gregg Dale, Commissioner
- Humboldt County Board of Supervisors – Mike Wilson, County Supervisor, District 3 / Board of Supervisors Vice Chair
  - Alternate: Virginia Bass, County Supervisor, District 4 / Board of Supervisors Chair
- Morro Bay City Council – John Headding, Mayor
  - Alternate: Jennifer Ford, Council Member
- San Luis Obispo County Board of Supervisors – Bruce Gibson, County Supervisor, District 2 / Board of Supervisors Chair; Dawn Ortiz-Legg, County Supervisor, District 3
  - Alternates: Blake Fixler, Legislative Assistant to Supervisor Bruce Gibson; Annie Secrest, Energy & Water Coordinator, County of San Luis Obispo Public Works
- Santa Barbara County Board of Supervisors – Joan Hartmann, Third District County Supervisor / Board of Supervisors Chair
  - Alternate: Jefferson Litten, Chief of Staff to Joan Hartmann
- Santa Barbara County Workforce Development Board – Linda Hillman, Deputy Director



# BOEM Proposed Sale Notice

---

*Sara Gultinan, BOEM*

*Marty Heinze, BOEM*



# Sara Gultinan, BOEM

## *Overview of Proposed Sale Notice*



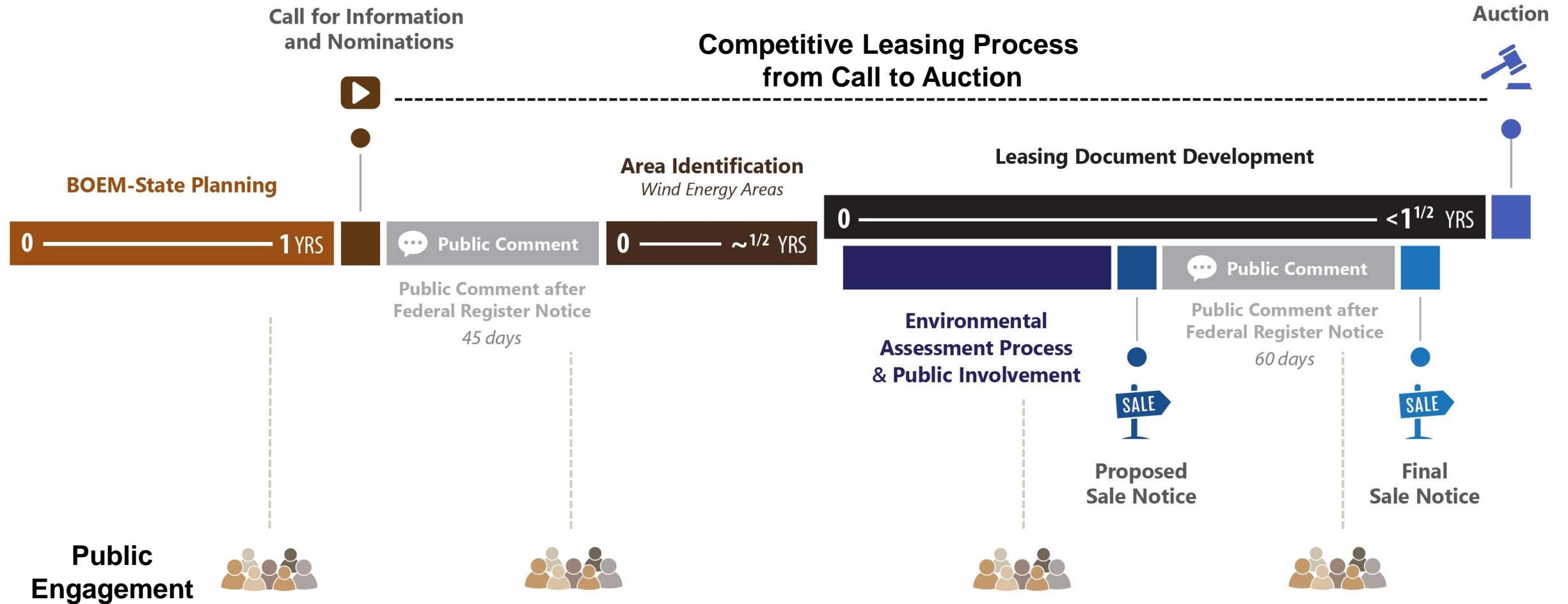
# Presentation Outline

- **Offshore wind activities update since July 2021 Task Force meeting – *very brief***
- **Overview of Proposed Sale Notice – *emphasis on key points for the California context***
- **Overview of proposed bidding credits and auction format – *by Marty Heinze***
- **Next steps in the BOEM leasing process**





# California Offshore Wind Energy Planning



# California Offshore Wind Energy Planning

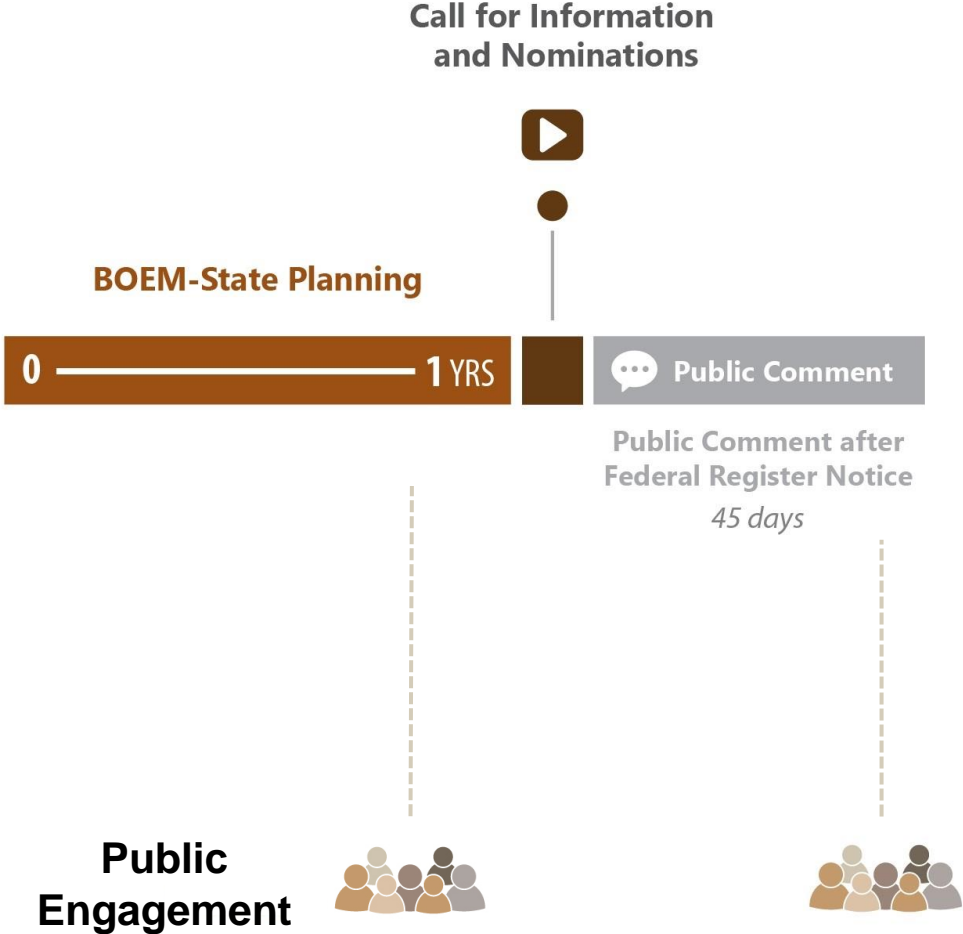
## BOEM-State Planning



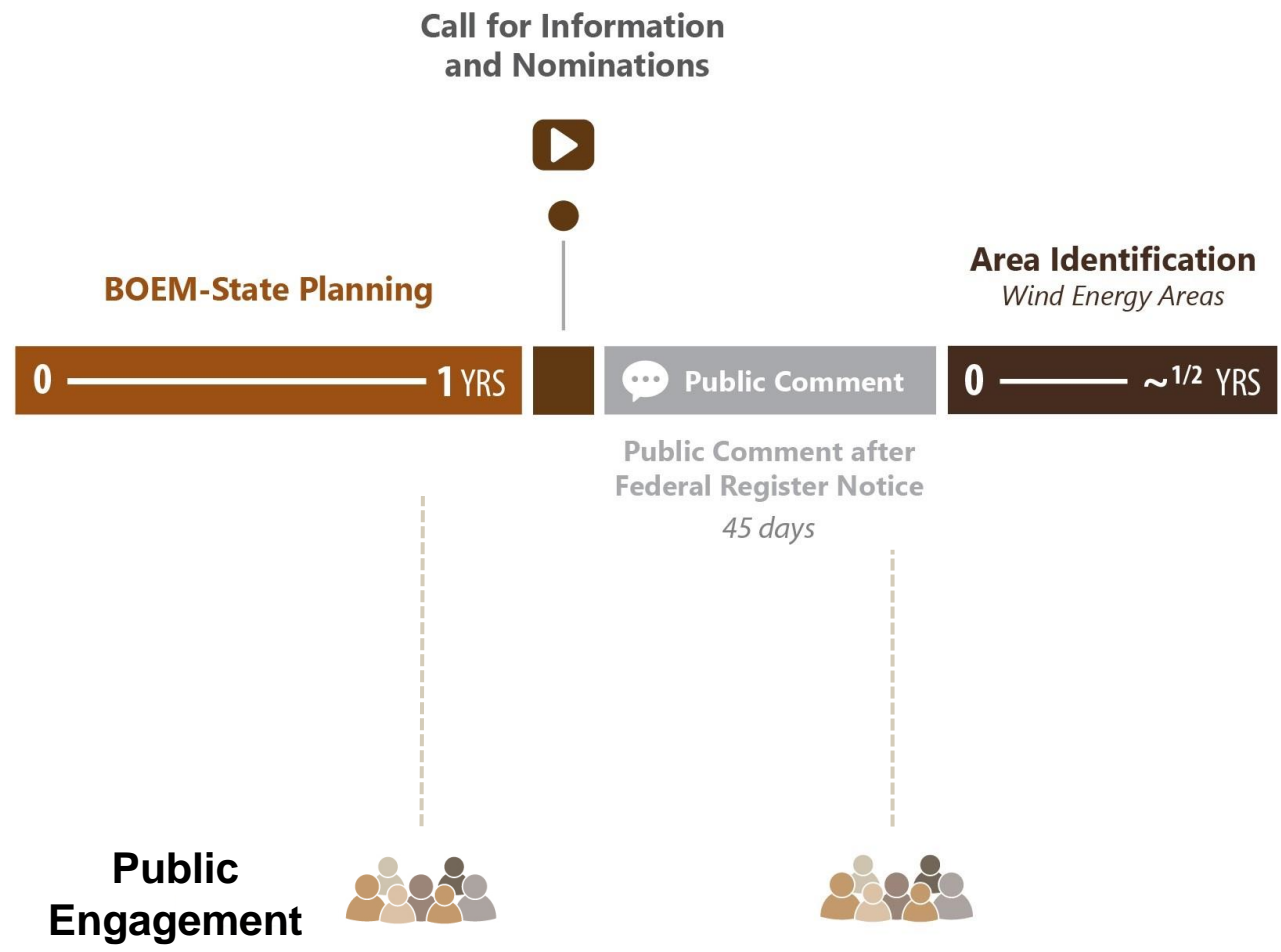
**Public  
Engagement**



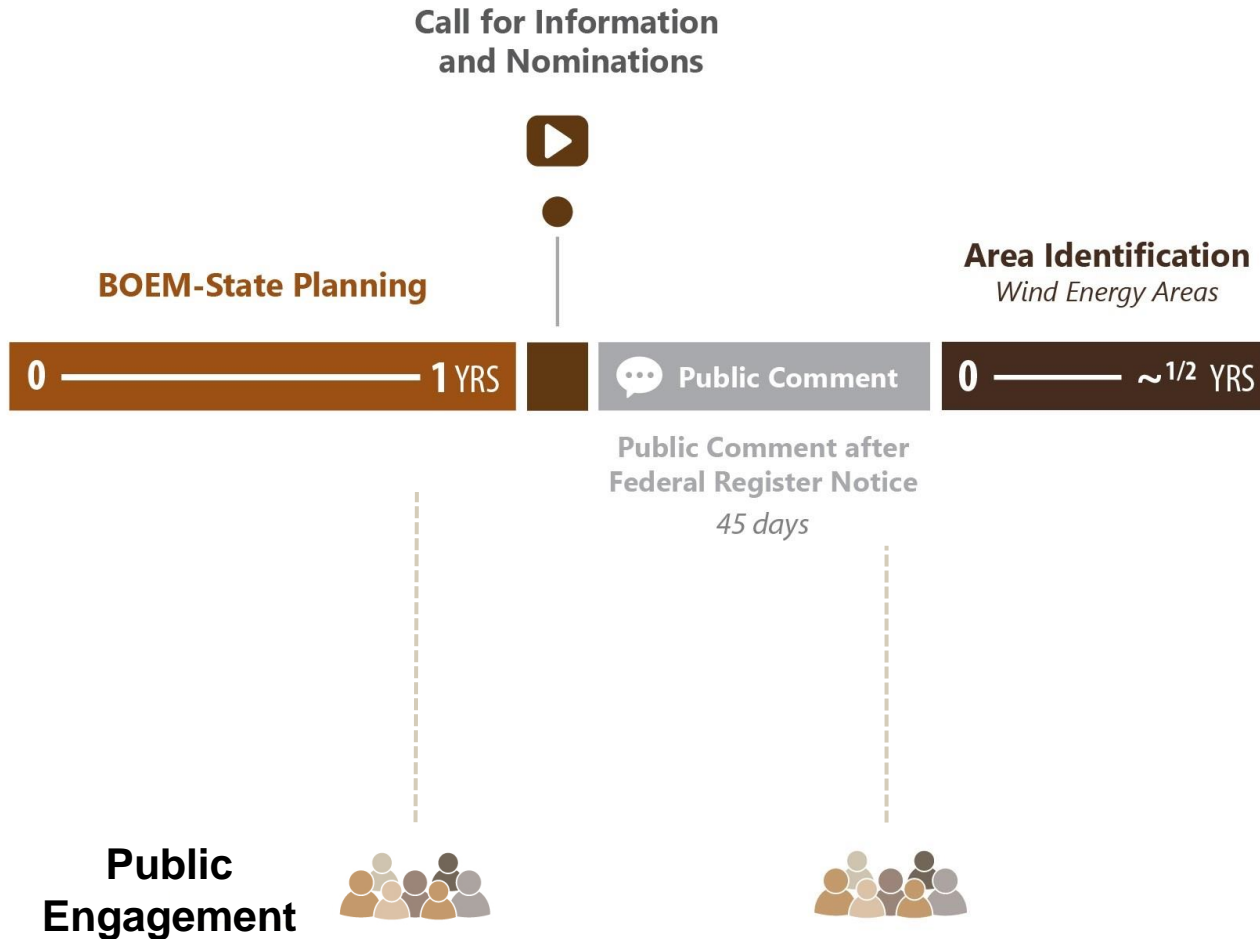
# California Offshore Wind Energy Planning



# California Offshore Wind Energy Planning



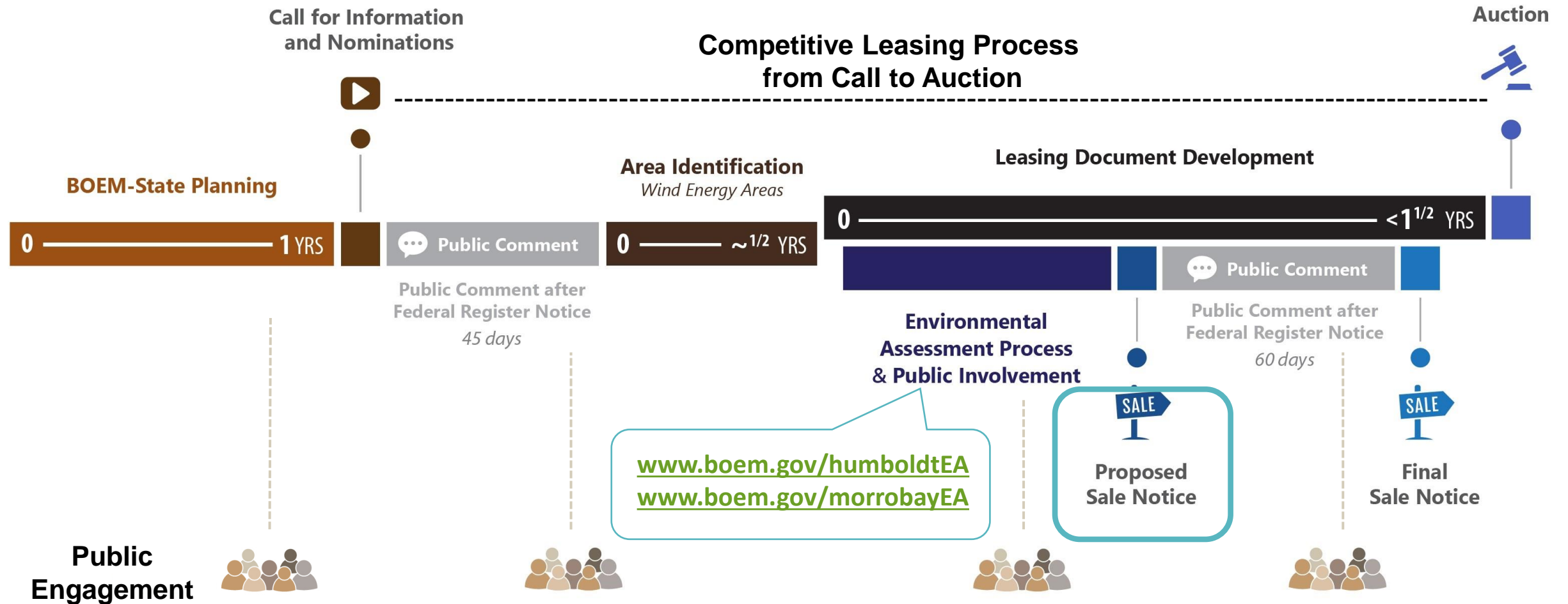
# California Offshore Wind Energy Planning



- California Offshore Wind Energy Planning Outreach Summary Report (2018)
- California Offshore Wind Energy Summary Report Addendum (2021)
- Call for Information and Nominations (2018)
- Call for Information and Nominations (2021)
- Humboldt Area Identification Memo (July 2021)
- Morro Bay Area Identification Memo (November 2021)
- California Proposed Sale Notice – Background (May 2022)



# California Offshore Wind Energy Environmental Review and Leasing



# Proposed Sale Notice (PSN)

- **Published in the Federal Register on May 31, 2022**
- **The PSN describes:**
  - 5 proposed areas that could be available for leasing
  - Proposed conditions and stipulations of a lease
  - Bidding credits that could be available to qualified bidders
  - Proposed auction format and procedures
  - Specific questions on which BOEM is seeking feedback
  - Process for issuing a lease
- **60-day public comment period ends August 1, 2022**
  - [Docket No. BOEM-2022-0017](#)



# PSN Package

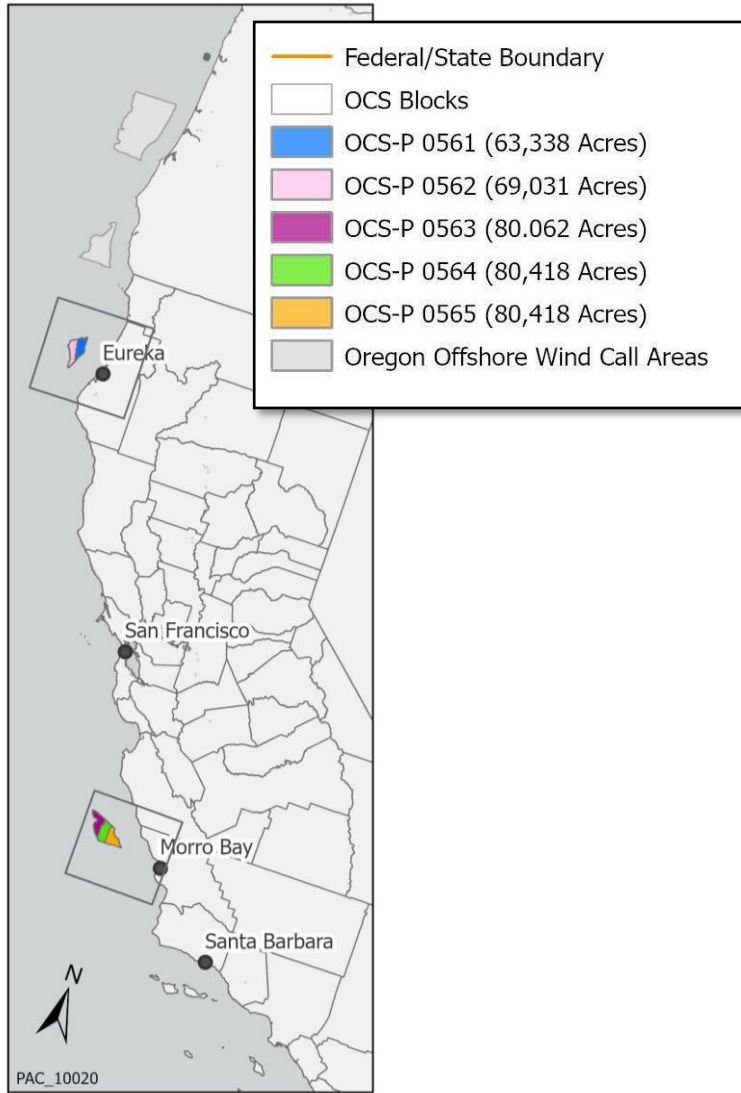
- Proposed Sale Notice
- North Coast (Humboldt) Proposed Leases (2)
  - CA Proposed Lease OCS-P 0561
  - CA Proposed Lease OCS-P 0562
- Central Coast (Morro Bay) Proposed Leases (3)
  - CA Proposed Lease OCS-P 0563
  - CA Proposed Lease OCS-P 0564
  - CA Proposed Lease OCS-P 0565
- Overview Map of the California Proposed Lease Areas
- California Proposed Lease Areas Shapefiles
- Bidder's Financial Form
- Bidder's Financial Form Addendum
- Qualifications Guidelines
- EFT Payment Instructions

All available on BOEM California Activities webpage: [www.boem.gov/california](http://www.boem.gov/california)

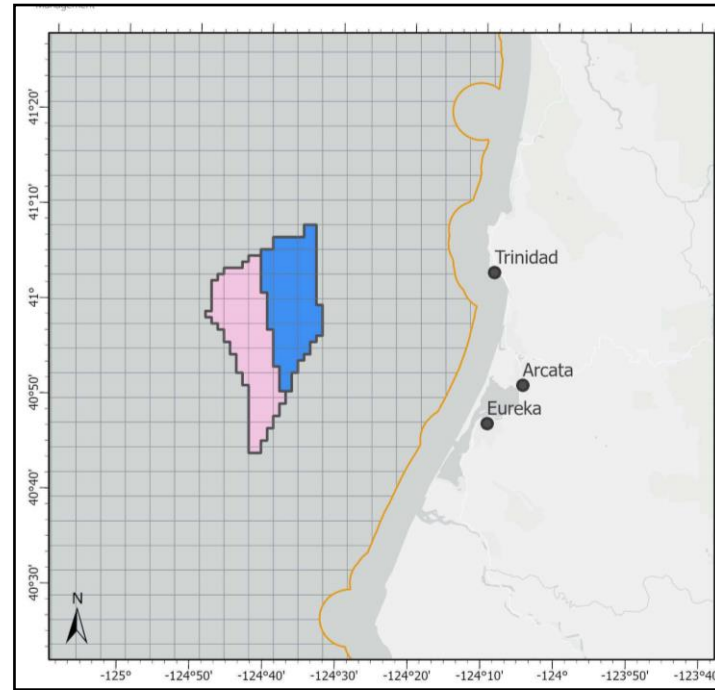




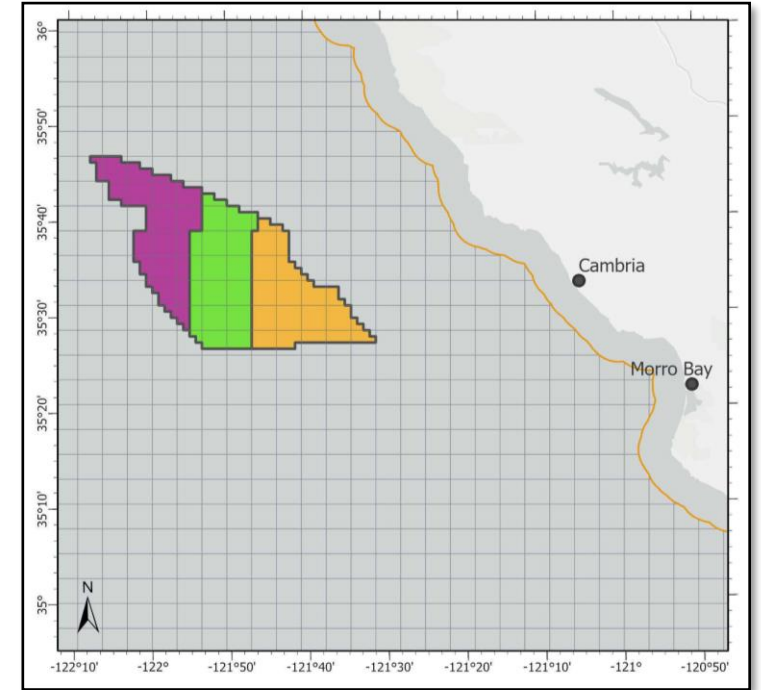
# Proposed Lease Areas



## 2 Lease Areas within the Humboldt Wind Energy Area



## 3 Lease Areas within the Morro Bay Wind Energy Area



# Proposed Lease Areas

	North Coast		Central Coast			
Lease Area	OCS-P 0561	OCS-P 0562	OCS-P 0563	OCS-P 0564	OCS-P 0565	Total
Area (acres)	63,338	69,031	80,062	80,418	80,418	373,268
Area (square miles)	99	108	125	126	126	583
Depth Range (meters)	537 – 1,017	614 – 1,137	988 – 1,271	953 – 1,284	884 – 1,165	--
Depth Range (feet)	1,762 – 3,337	2,014 – 3,730	3,241 – 4,170	3,127 – 4,213	2,900 – 3,822	
Closest Distance to Shore (miles)	20	20	26	22	20	--
Installation Capacity (MW) <sup>[1]</sup>	769	838	972	976	976	4,532
Homes Powered <sup>[2]</sup>	269,136	293,328	340,200	341,712	341,712	1,586,088
Power Production (MWh/year) <sup>[3]</sup>	2,694,436	2,936,632	3,405,888	3,421,025	3,421,025	15,879,007

MW = megawatts

MWh = megawatt-hour

[1] Based on Power Density Factor of 3 MW per square kilometer

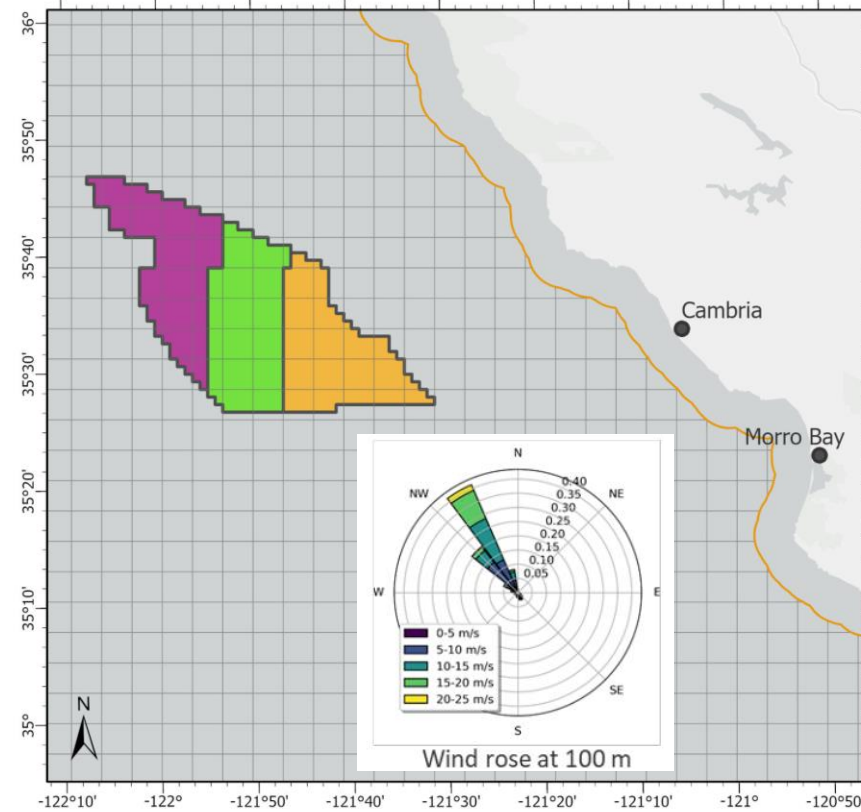
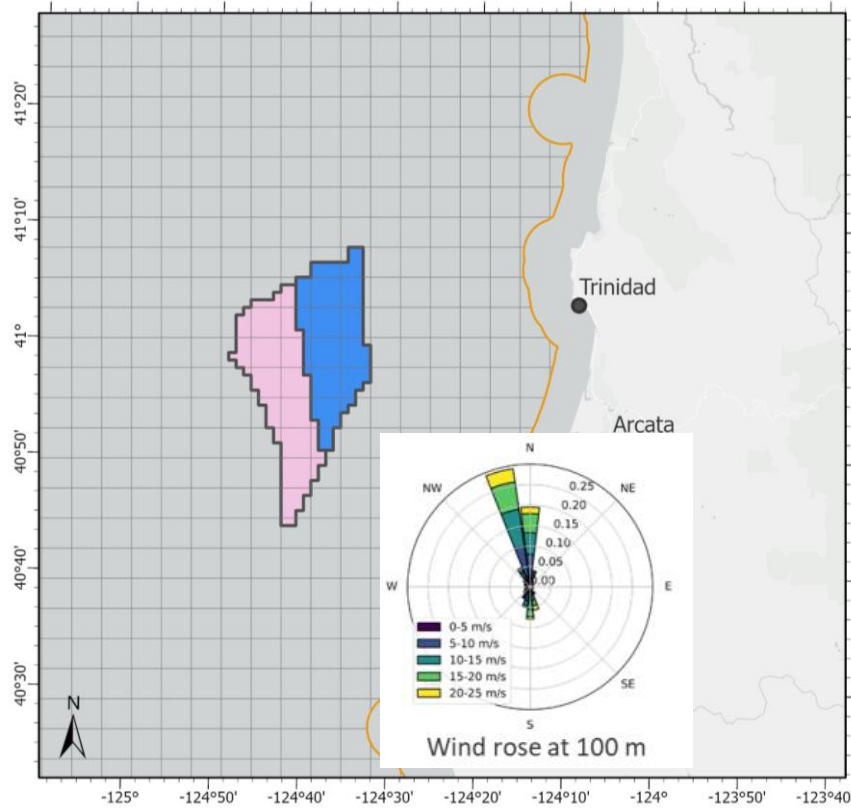
[2] Based upon 350 homes per MW of installation capacity

[3] Power Production = Installation Capacity (MW) \* 8760 (hours/year) \* 0.4 (capacity factor)



# Proposed Lease Areas – Delineation Goals

- Maximize energy generation
- Equal commercial viability
- Approximately equal size



See “Assessment of Offshore Wind Energy Leasing Areas for Humboldt and Morro Bay Wind Energy Areas, California” report by the National Renewable Energy Laboratory: <https://www.boem.gov/BOEM-2022-025>



# Lease Summary

**Rights of the Lessee:** to submit to BOEM for approval a Site Assessment Plan (SAP) and Construction and Operations Plan (COP) for a wind energy project. A lease does not, by itself, authorize any activity within the leased area.

- Plans are subject to subsequent environmental, technical, and public reviews prior to BOEM decision on whether to approve the Plans.
- BOEM can approve, approve with modifications, or not approve an SAP or COP.

**Terms:** Preliminary Term (1 year), Site Assessment Term (5 years), Operations Term (33 years)

**Payments:** Rent and Operating Fees

**Financial Assurance:** Lessee must provide and maintain financial assurance to meet all accrued lease obligations.

- Initial Financial Assurance: \$100,000 due before lease issuance
- Additional Financial Assurance: associated with the SAP, COP, and anticipated decommissioning costs, amounts determined by BOEM

**Lease-specific terms, conditions, and stipulations: Addendum C**



# Selected Lease-Specific Terms, Conditions, and Stipulations

“The Lessor reserves the right to impose additional terms and conditions incident to the future approval or approval with modifications of plans” (Addendum C)

## Site Characterization Activities

- Lessee must submit a survey plan before conducting each physical, biological, or cultural resources survey
- Survey plans must be consistent with Lessee’s Communications Plans
- Pre-Survey Meeting(s) with BOEM and all relevant subject matter experts
- Tribal Pre-Survey Meeting with Lessee, interested Tribes, and Lessee’s Qualified Marine Archaeologist



# Selected Lease-Specific Terms, Conditions, and Stipulations

## Engagement and Reporting

- Lessee will make reasonable efforts to consult with Tribes and parties who may be potentially affected by the project activities on the Outer Continental Shelf.
- Requirement encourages Lessee to identify and engage with underserved communities in order to avoid, minimize, and mitigate potential adverse effects.
- Coordinated engagement among lessees to decrease communication and consultation burden.
- Progress Reports submitted to BOEM every 6 months.
- Progress Report must include: Tribes and parties engaged, potential adverse effects from Lessee's project, how project design or implementation was informed or altered to address potential effects (if at all), feedback from engagement on transmission planning prior to proposing any export cable, survey plan activity progress.



# Selected Lease-Specific Terms, Conditions, and Stipulations

## Communications Plans

- Native American Tribes Communications Plan (NATCP)
  - Lessee must work with BOEM and California Native American Heritage Commission to identify Tribes with cultural and/or historical ties to the Lease Area.
  - Describes Lessee's strategies for communicating with Tribes.
  - Should include protocols for unanticipated discovery of any potential pre-contact archaeological resources.
  - Must include contact information for Lessee's Tribal Liaison.
- Agency Communications Plan (ACP)
  - Describes Lessee's strategies for communicating with federal, state, and local agencies with authority related to the Lease Area.
  - Intended to improve quality and efficiency of agency decision-making processes.
  - Must include contact information for Lessee's Agency Liaison.
- Fisheries Communications Plan (FCP) – see next slide
- All draft plans to BOEM and interested Tribes, Agencies and Fisheries, respectively, for review and comment, and meetings on draft plans within 120 days of lease execution.



# Selected Lease-Specific Terms, Conditions, and Stipulations

## Commercial Fisheries

- Fisheries Communications Plan (FCP):
  - Describes Lessee's strategies for communicating with fisheries stakeholders.
  - Must include a process to file a complaint with the offshore wind operator and seek the replacement of or compensation for lost gear.
  - Must include contact information for Lessee's Fisheries Liaison.
- Before submitting a COP, Lessee will contact potentially affected commercial fishing communities or their representatives to discuss potential conflicts with the siting, timing, and methods proposed.
- Lessee will ensure that survey and development activities are compatible with seasonal fishing operations whenever feasible and avoid creation of obstacles and entanglement hazards to commercial fishing operations.
- Lessee must provide annual summary of files complaint claims and outcomes.
- Requirements for Lessee's COP: prioritize Federal and State climate change adaptation strategies for fisheries, vessel routes to minimize impacts, include analysis of the effects of operations on allocation and use of local dock space.





# Selected Lease-Specific Terms, Conditions, and Stipulations

## Archaeological Surveys

- Lessee must provide methods and results of archaeological survey.
- In the event of unanticipated discovery of potential archaeological resource, immediately halt bottom-disturbing activities, avoidance distance must be calculated from the maximum discernible extent of the resource (minimum of 50 meters).

## Project Labor Agreements (PLAs)

- Lessee must make every reasonable effort to enter a PLA that covers the construction stage of any project proposed for the leased area, and that applies to all contractors.

## National security and military operations

## Marine trash and debris prevention

## Site access by BOEM for research purposes



# Selected Lease-Specific Terms, Conditions, and Stipulations

## Additional conditions to be included in final leases

- Protective measures for biological surveys:
  - BOEM Endangered Species Act Consultation for biological surveys with National Marine Fisheries Service (NMFS) and the U.S. Fish and Wildlife Service is in progress.
  - Biological surveys must be within the scope of activities described in consultation or Lessee must consult with BOEM and the Services.
- Protective measure for geological and geophysical surveys:
  - Lessee must comply with protective measures identified through BOEM Endangered Species Act consultation (in progress).
  - Lessee may satisfy the protected species requirements by complying with NMFS-approved measures most current at the time of activity.
- Updated conditions to ensure that the activities authorized under the lease are consistent with conditions of California Coastal Commission's consistency review under the Coastal Zone Management Act.



# PSN Questions for Stakeholders

- **Number, size, orientation, and location of the proposed lease areas**
- **Engaging underserved communities**
- **Bidding credits**
- **Limits on the number of lease areas per bidder**
- **Definition of “affiliated entities”**
- **Engagement and reporting**
- **Project layout considerations**
- **Industry standards for environmental protection**
- **Measures to facilitate vessel transit**



# Marty Heinze, BOEM

## *Proposed Bidding Credits and Auction Format*



# Lease Sale and Auction

- **Ascending bid clock auction format**
  - Multi-factor (cash + bidding credits)
  - Lease awarded to highest bidder
  - Bids are entered electronically through an online auction platform
  - PSN proposes limiting bidders to one lease area in each the north and central coast.
- **Auction ends when there is no more than one bidder for each of the lease areas**
  - Could span multiple days depending on demand



# Post Auction

- **Provisional winners announced following conclusion of auction**
- **DOJ Antitrust review (30 days)**
- **Lease awarded after payment of bonus balance and signed lease returned to BOEM**
- **A lease does not constitute approval of project-specific plans**
  - 1-year preliminary term
  - 5-year site assessment term
  - 33-year operating term



# Bidding Credit

- Bidders may receive a bidding credit in exchange for committing to make a qualifying monetary contribution to programs or initiatives supporting offshore wind
- Two types of bidding credits proposed:
  - 20% bidding credit for a commitment to invest in programs that will advance U.S. offshore wind energy **workforce training and/or supply chain development**.
  - 2.5% bidding credit for executing a community benefit agreement with a stakeholder group whose use of **resources harvested from within the geographic space of the lease** is directly impacted by the Lessee's potential offshore wind development.



# Workforce Training Bidding Credit

- **The contribution must result in a better trained offshore wind workforce including:**
  - Union apprenticeships, labor management training partnerships, stipends for workforce training, or other technical training programs.
  - Maritime training for crewing vessels supporting wind energy projects.
  - Training workers in skills or techniques necessary to manufacture or assemble offshore wind components, subcomponents, or subassemblies.
  - Training in other skills Lessee can demonstrate are necessary for the planning, design, construction, operation, or maintenance of offshore wind energy projects in the United States.





# Supply Chain Development Bidding Credit

- **The Contribution must result in:**

- Overall benefits to the U.S. offshore wind supply chain for all potential purchasers of offshore wind services, components, or subassemblies, not solely the Lessee's project.
- A demonstrable development of new domestic capacity (including vessels) or the demonstrable buildout of existing capacity.
- A more robust domestic supply chain by reducing the upfront capital or certification cost for manufacturing offshore wind components including the building of facilities, the purchasing of capital equipment, and the certifying of existing manufacturing facilities.
  - Includes quay-side fabrication and components specifically needed to develop floating wind technology.



# Lease Area Use Community Benefit Agreement

- **A lessee agreement with a qualified stakeholder(s) to include provisions such as:**
  - Plans to mitigate potential impacts of the proposed development to ocean users within the lease area including fisheries.
  - Compensation, mitigation, or other compensatory measures for potential impacts to ocean uses within the lease area including fisheries.
  - Commitment of parties to collaboration and resolution of issues with or without the assistance of an independent third party.
  - Promotion of community education and engagement regarding the coexistence of ocean users.



# Bid Amount

- **The bid made by a particular bidder in each round would represent the sum of a monetary (cash) amount and non-monetary factors (bidding credit(s)).**
  - The bidding credit is a percentage of the cash bid.  
$$\text{Cash Bid} * \text{Credit Percentage} = \text{Credit}$$
  - The cash bid is then added to your credit to equal the round's asking price

$$\text{Cash Bid} + \text{Credit} = \text{Asking Price (or Imputed Price)}$$



# Bidding Credit Formula

**In the auction system the bidding credit is calculated as:**

$$\text{Cash Bid} = \frac{\text{Imputed Price (bid amount)}}{(1 + \text{Bidding Credit Percentage})}$$

$$\text{Credit} = \text{Imputed Price} - \text{Cash Bid}$$

$$\text{Commitment} = 0.80 * \text{Credit}$$

*(20% bid credit)*

**Imputed Price** – the bidder’s total winning bid for the lease or lease areas

**Cash Bid** – the calculated amount the bidder pays

**Credit** – the calculated amount the bidder receives as credit

**Commitment** – the calculated amount the bidder will put towards workforce training, development of the domestic supply chain.



# Bidding Credit Example

- **Example: a winning bidder qualifying for the 20% bidding credit.**
  - The total winning bid for the bidder was \$30 million. The bidder would receive a credit of \$5 million towards its winning bid in exchange for \$4 million commitment to workforce training or development of the domestic supply chain. The calculations are as follows:

$$\text{Cash Bid} = \frac{\$30 \text{ million}}{(1 + 0.20)} = \$25 \text{ million}$$

$$\text{Credit} = \$30 \text{ million} - \$25 \text{ million} = \$5 \text{ million}$$

$$\text{Commitment} = 0.80 * \$5 \text{ million} = \$4 \text{ million}$$

- **Note:**
  - Credit is 16.67% of Imputed Price
  - Commitment is 13.33% of Imputed Price



# Compliance/Enforcement

- **20% Workforce Training/Supply Chain Bidding Credit**
  - The Lessee is not permitted to retain an equity interest in the entity receiving the Contribution, a discount on the market price for goods or services, but can purchase offshore wind goods or services from the recipient at market rates.
  - All lessees must have the opportunity to hire trained individuals. Trainees cannot be contractually required to enter into employment agreements with either the Lessee or the entity providing the training.
  - 25% of the supply chain Contribution is due before submission of the first COP; remainder is due before the Lessee's first FDR.
- **If the Lessee fails to satisfy the bidding credit commitment, the amount will be immediately due and payable with interest.**



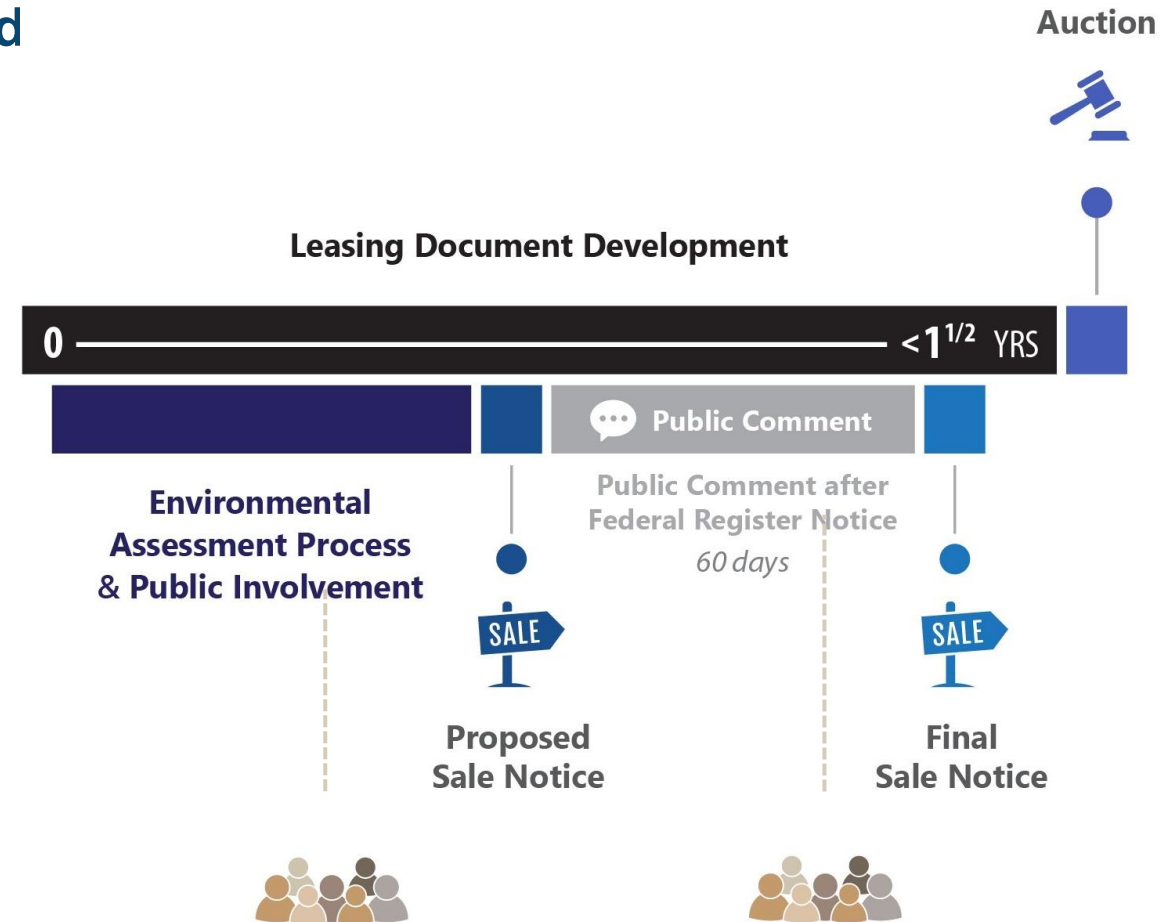
# Sara Gultinan, BOEM

## *Next Steps*



# Next Steps for California Offshore Wind

- **California Coastal Commission Hearing on Consistency Determination for Morro Bay Wind Energy Area (June 8, 2022)**
- **Public Auction Seminar (June 16, 2022)**
- **Additional fishing engagement**
- **Additional Tribal consultation and engagement**
- **Complete Morro Bay Environmental Assessment**
- **Review PSN comments, finalize qualification reviews**
- **Publish Final Sale Notice**
  - Specifies the final lease areas to be offered, final auction format, auction date, and lists qualified bidders
- **30-day waiting period**
- **Lease Auction**





# Contact Information

## BOEM Pacific Regional Office

Doug Boren | Regional Director  
douglas.boren@boem.gov

Necy Sumait | Office of Strategic Resources Regional Supervisor  
necy.sumait@boem.gov

Sara Gultinan | Renewable Energy Specialist  
sara.gultinan@boem.gov

Lisa Gilbane | Environmental Analysis Section Chief  
lisa.gilbane@boem.gov

John Romero | Public Affairs Officer  
john.romero@boem.gov

Abigail Ryder | NEPA Coordinator  
abigail.ryder@boem.gov

## BOEM Economics Division

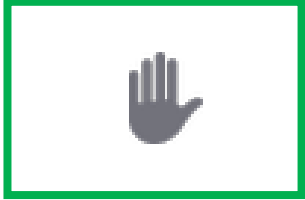
Marty Heinze | Economist  
martin.heinze@boem.gov



# Task Force Questions and Comments on the Proposed Sale Notice



# Task Force - Webinar Options



- **Click the “raise hand” icon in the top of the webinar window to enter the discussion queue; click again to lower your hand after speaking**



- **Click the mute and unmute button to speak**

# Task Force Member Updates

---

*Rhetta deMesa, California Energy Commission*

*Jana Ganion, Blue Lake Rancheria*

*Other Invited Tribal Task Force Members*

*Break*

*Holly Wyer, California Coastal Commission*

*Tyrone Conner, US Coast Guard*



# Rhetta deMesa, California Energy Commission

## *Assembly Bill 525 (Chiu, 2021) Update*





# **Update to the BOEM-CA Intergovernmental Renewable Energy Taskforce on Assembly Bill 525**

Rhetta deMesa, California Energy Commission

June 3, 2022



# Senate Bill 100 and the 2021 Joint Agency Report

## SB 100 Energy Policies:

- Requires all retail electricity and 100 percent of electricity procured to serve all state agencies to come from eligible renewable energy resources and zero-carbon resources by 2045
- Increase the 2030 Renewables Portfolio Standard to 60%

## Key Findings from the 2021 Joint Agency Report:

- Core Scenario includes 10 GW of OSW in 2045
- Need for sustained record setting build rates of new renewable and zero-carbon resources
- Additional work is needed to understand the potential of emerging technologies including offshore wind

### California Clean Electricity Resources

	Existing Resources		Projected New Resources	
	2019*	2030**	2030**	2045**
Solar (Utility-Scale)	12.5 GW	16.9 GW	69.4 GW	
Solar (Customer)	8.0 GW	12.5 GW	28.2 GW	
Storage (Battery)	0.2 GW	9.5 GW	48.8 GW	
Storage (Long Duration)	3.7 GW	0.9 GW	4.0 GW	
Wind (Onshore)	6.0 GW	8.2 GW	12.6 GW	
Wind (Offshore)	0 GW	0 GW	10.0 GW	
Geothermal	2.7 GW	0 GW	0.1 GW	
Biomass	1.3 GW	0 GW	0 GW	
Hydrogen Fuel Cells	0 GW	0 GW	0 GW	
Hydro (Large)	12.3 GW	N/A†	N/A†	
Hydro (Small)	1.8 GW	N/A†	N/A†	
Nuclear	2.4 GW	N/A†	N/A†	



# Assembly Bill 525 Strategic Plan Timeline

**June 1, 2022**

Evaluate and quantify maximum feasible capacity and establish megawatt planning goals for 2030 and 2045

**December 31, 2022**

- 1) Complete and submit a preliminary assessment of economic benefits as they relate to seaport investments and workforce development needs
- 2) Complete and submit a permitting roadmap

**June 30, 2023**

Develop a strategic plan for offshore wind off the California coast in federal waters

## Strategic Plan Chapters:

1. Identification of sea space
2. Economic and workforce development and identification of port space and infrastructure
3. Transmission planning
4. Permitting
5. Potential impacts on coastal resources, fisheries, Native American and Indigenous peoples, and national defense, and strategies for addressing them





# Thank You

Rhetta deMesa

[rhetta.demesa@energy.ca.gov](mailto:rhetta.demesa@energy.ca.gov)

(916) 628-1640

CEC's Offshore Renewable Energy Webpage:

<https://www.energy.ca.gov/programs-and-topics/topics/renewable-energy/offshore-renewable-energy>

# Jana Ganion, Blue Lake Rancheria



# Other Tribal Task Force Representatives Invited



**Break**  
**Return at 10:55**



# Holly Wyer, California Coastal Commission

## *Coastal Commission Federal Consistency Review*



# Update on Coastal Commission Federal Consistency Review

BOEM-California Renewable Energy Task Force Meeting

June 3, 2022



# Overview of CZMA and California

- Coastal Zone Management Act (CZMA)
  - Creates partnership between state and federal government; and
  - Provides states with decision-making authority over federal actions that impact state coastal resources.
- Coastal Commission is the only state agency with an official action at the leasing phase → close coordination with other state and federal agencies is critical

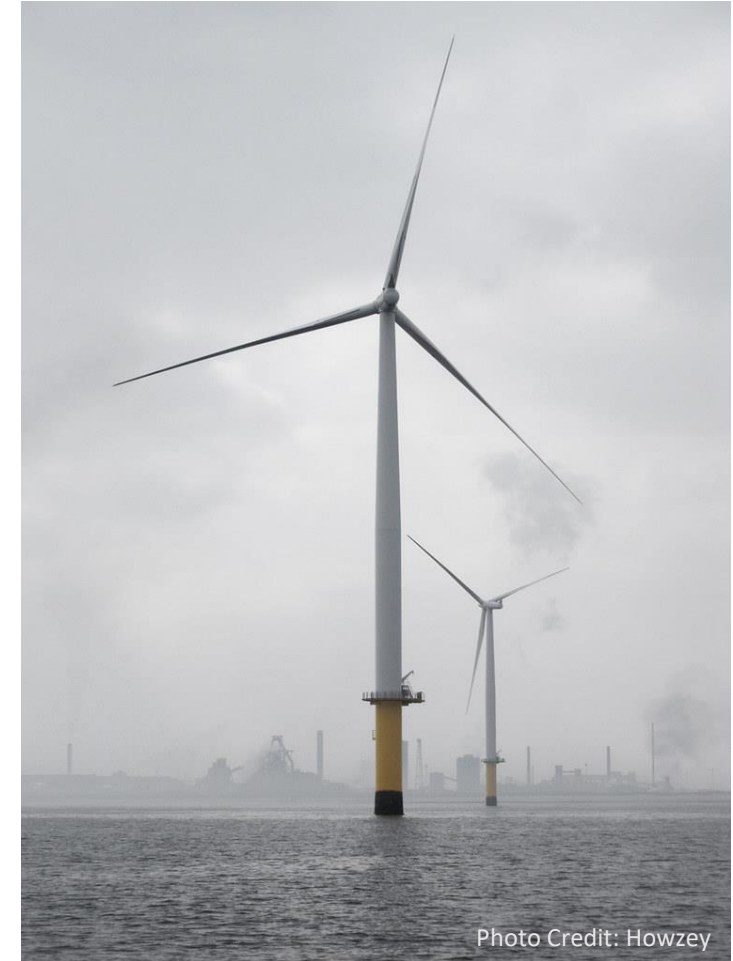
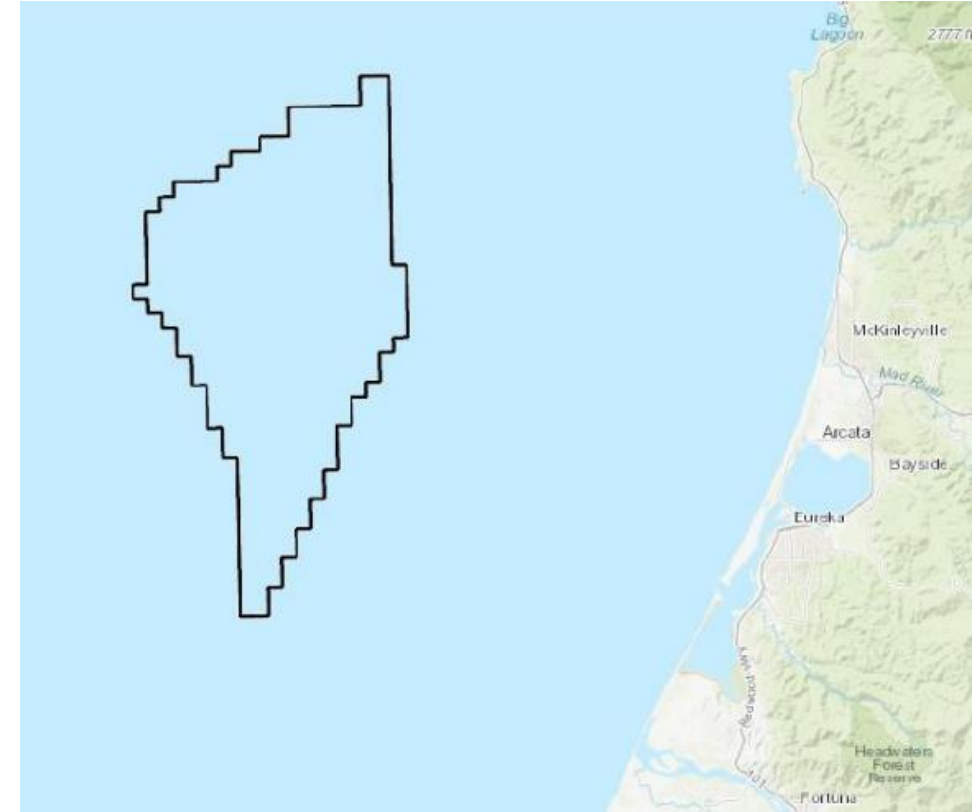


Photo Credit: Howzey



# Conditional Concurrences

- The Commission conditionally concurred for the Humboldt WEA in April 2022
- This concurrence was made with seven conditions, which BOEM has agreed to implement.
- These seven conditions have also been recommended for a conditional concurrence for the Morro Bay WEA (hearing date: June 8, 2022)





# Conditions

1. Review of lessee's surveys and site assessment plans
  - Includes requirements for marine life monitoring measures, spill prevention and response plans, critical operations and curtailment plans, and anchoring plans.
2. No bottom contact on sensitive habitats
3. Speed limit for vessel travel of no more than 10 knots
4. Process to ensure safe navigation



# Conditions (continued)

5. Engagement with environmental justice and local communities
  - Intended to include capacity building, and to potentially lead to community benefit agreements
6. Engagement with California Native American Tribes
  - Strongly encourages lessees to retain a qualified tribal liaison, engage on procedures to follow in the event of an unanticipated discovery of cultural resources, and engage on other topics of interest to tribes



# Conditions (continued)

## 7. Engagement with Fishing Communities

- Requires a fishing liaison to coordinate survey activities with fishing communities
- Requires outreach reporting from lessees
- Requires a working group to develop a statewide strategy for avoidance, minimization and mitigation of impacts to fishing and fisheries.



# Current Status

- The Commission conditionally concurred with the Humboldt WEA consistency determination in April 2022
- The Commission will consider the Morro Bay consistency determination on June 8, 2022
  - Written comment deadline for the staff recommendation is 5:00 PM today
  - Hybrid hearing on June 8, in-person is in Del Mar



# Thank you

- Contact: [holly.wyer@coastal.ca.gov](mailto:holly.wyer@coastal.ca.gov)
- For comments on the Morro Bay consistency determination, please email: [osw@coastal.ca.gov](mailto:osw@coastal.ca.gov)



Kristen Fletcher

# Tyrone Conner, US Coast Guard

## *Pacific Port Access Route Study*





**U.S. Coast Guard  
Eleventh District**

# **Pacific Coast Port Access Route Study (PAC-PARS)**

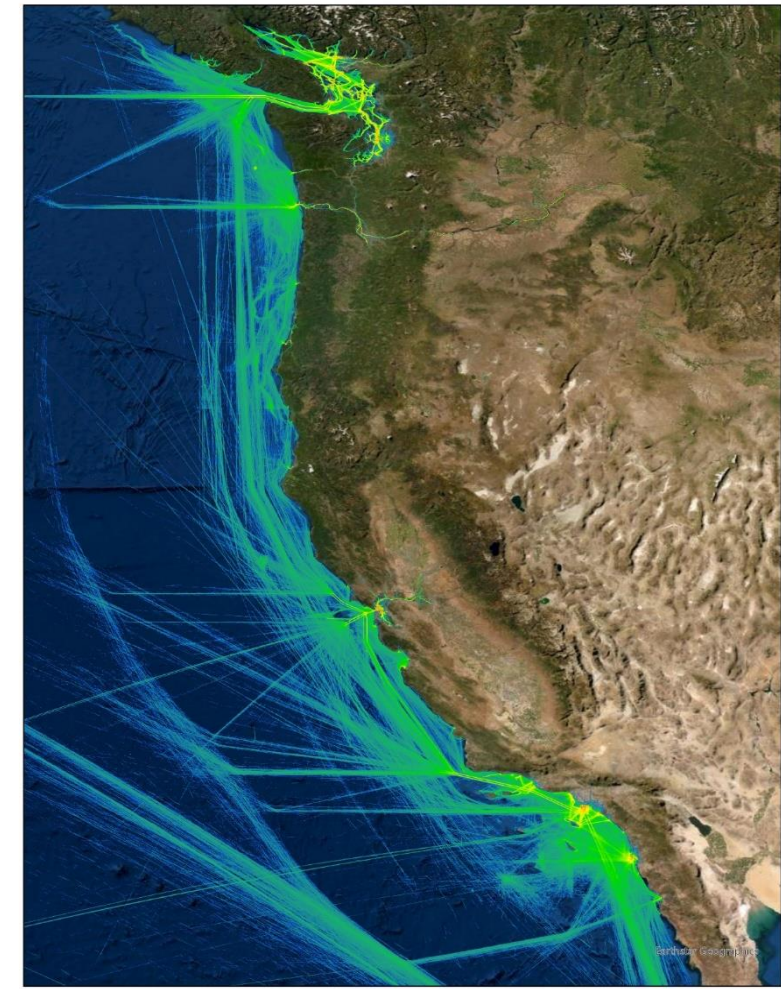
**Mr. Tyrone Conner  
U.S. Coast Guard Eleventh District  
Deputy Chief, Waterways Management**



U.S. Coast Guard  
Eleventh District

## What is the Pacific Coast Port Access Route Study?

- Port and Waterways Safety Act (PWSA)
  - 46 USC 70003
- Requirements:
  - Required before establishing new or adjusting existing FAIRWAYS and/or TRAFFIC SEPARATION SCHEMES.
  - Coordinate with stakeholders for safe routes.
- Coast Guard
  - Notice of Study
    - July 28, 2021 – Published on Federal Register
    - Jan 25, 2022 – Comment period closed 180-days received 52 comments
  - Notice of Inquiry
    - Feb 24, 2022 – Published on Federal Register
    - May 26, 2022 – Comment period closed 90-days received 14 comments

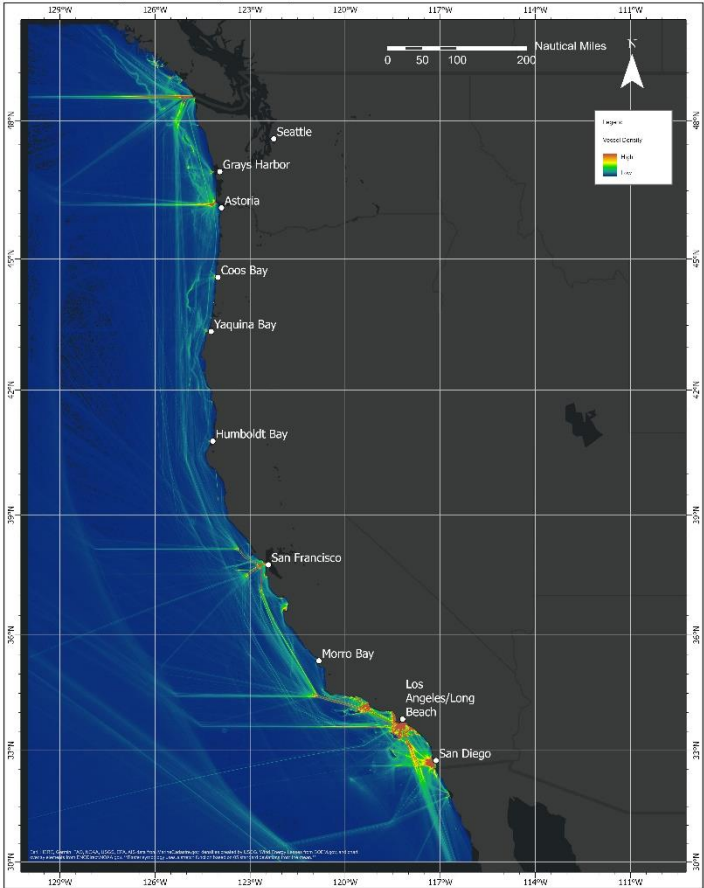




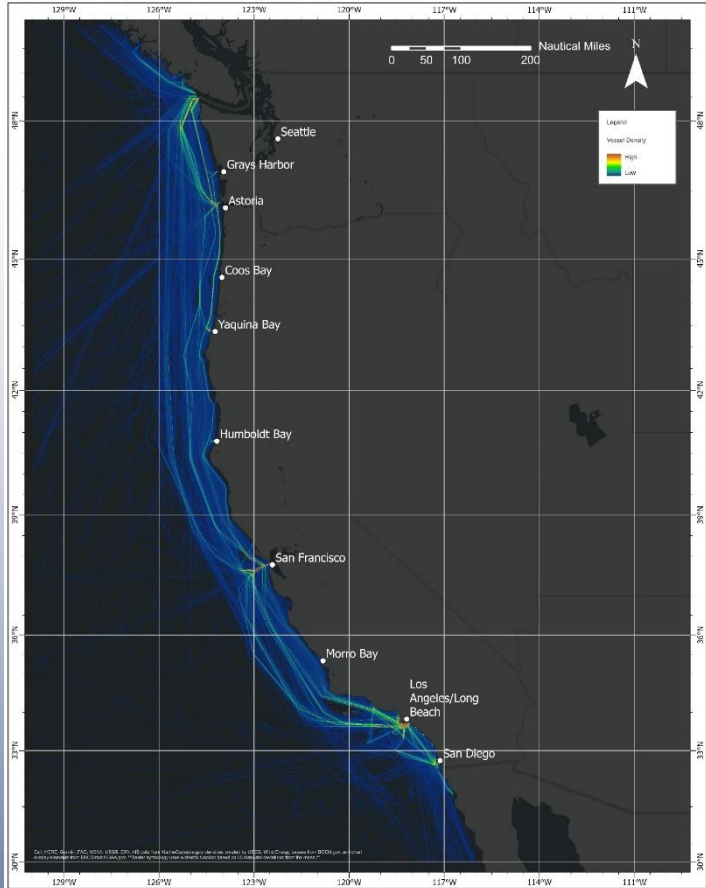


# U.S. Coast Guard Eleventh District

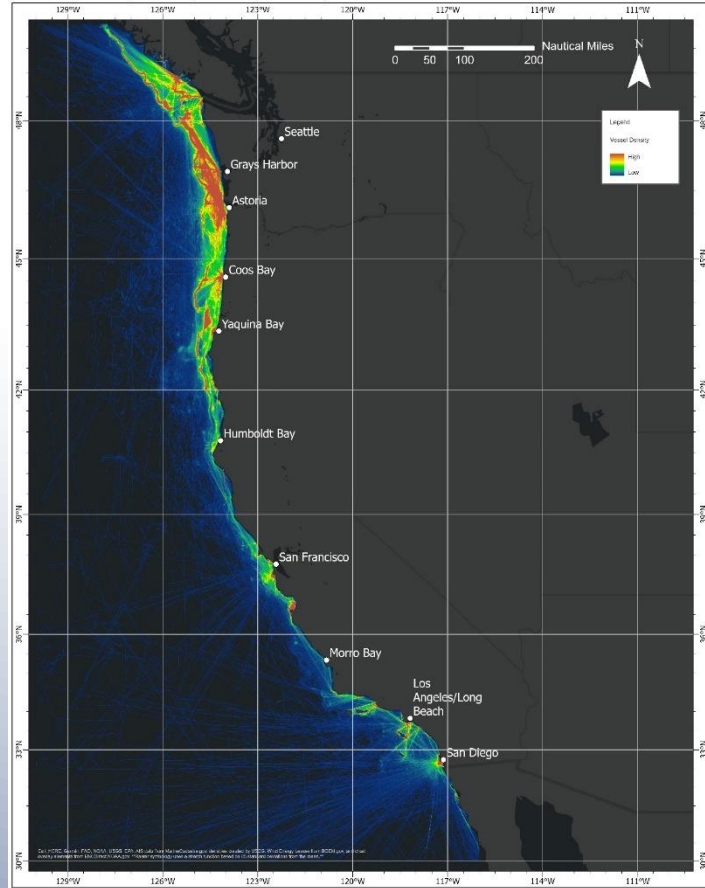
Average Density of All Vessels (2017-2020)



Average Density of Tug/Tow Vessels (2017-2020)

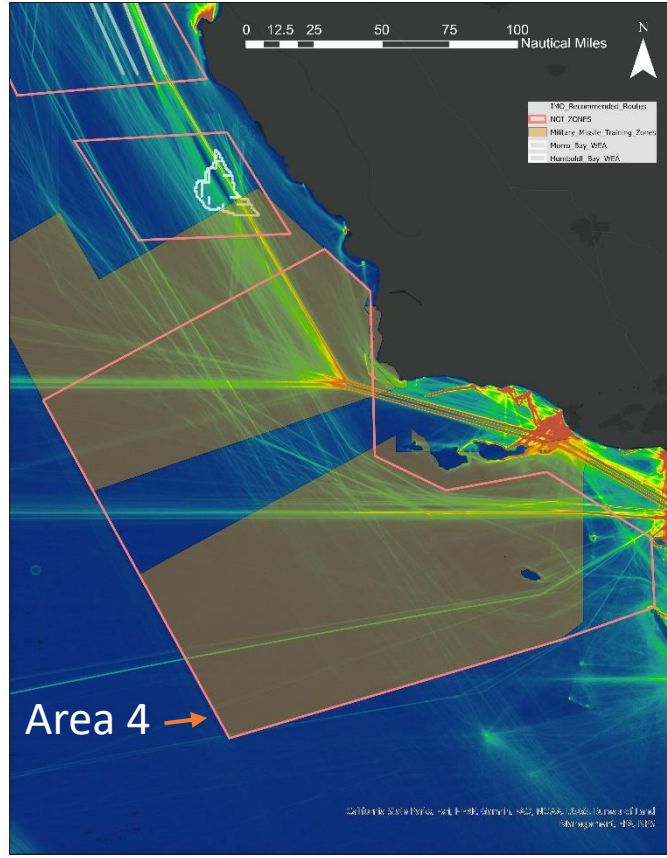
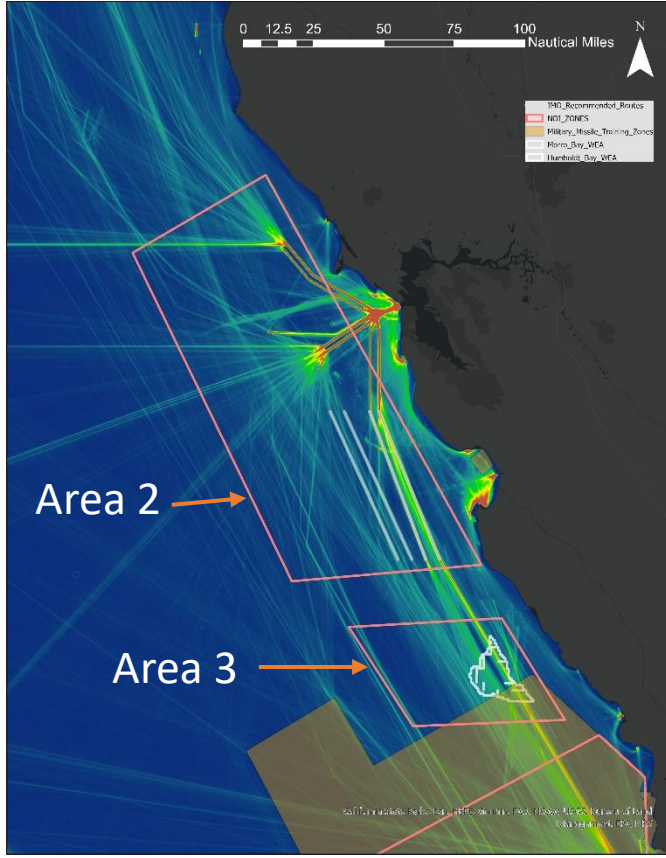
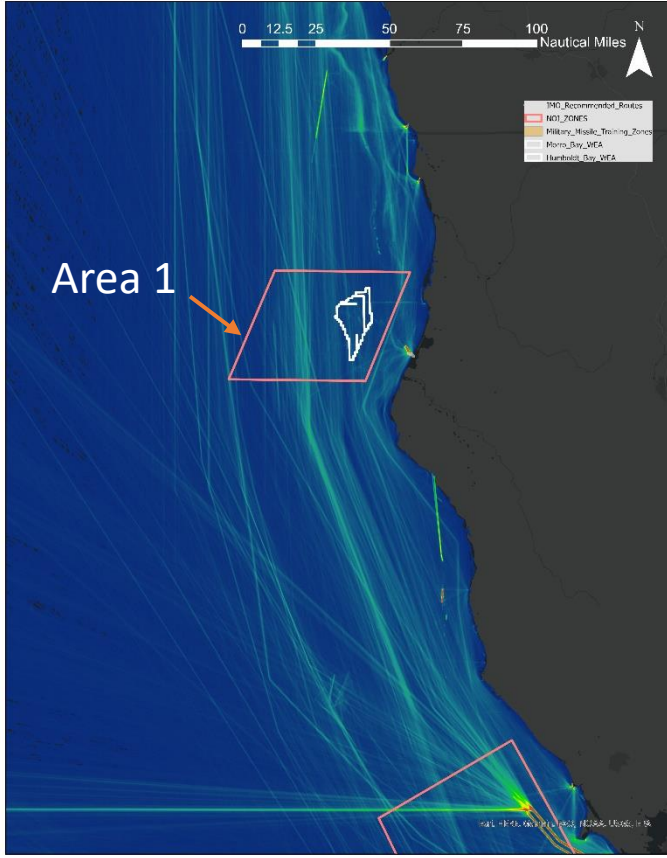


Average Density of Fishing Vessels (2017-2020)



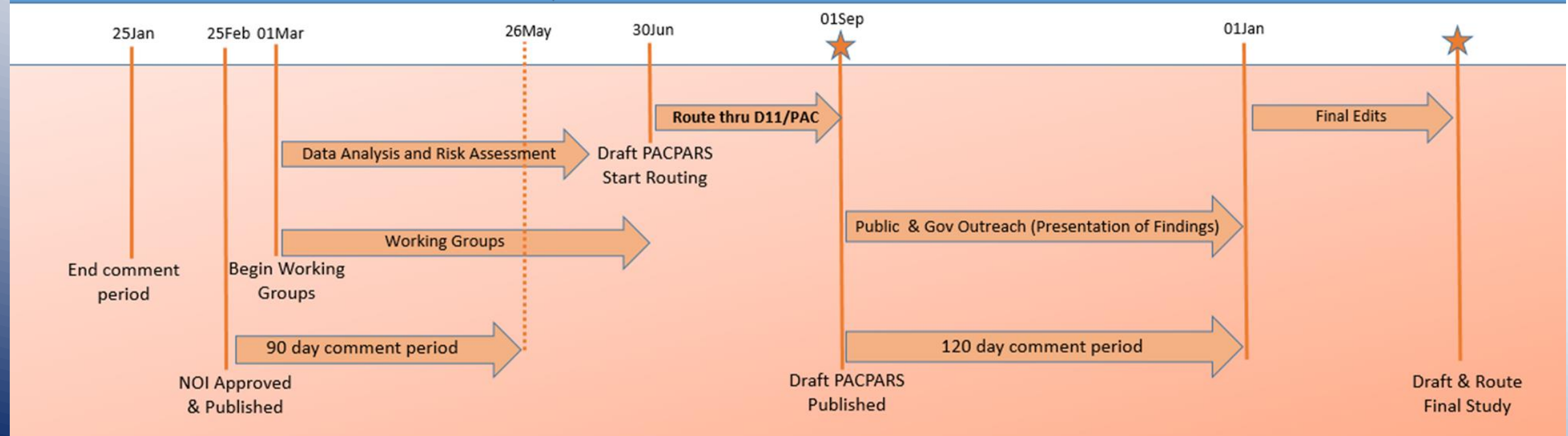
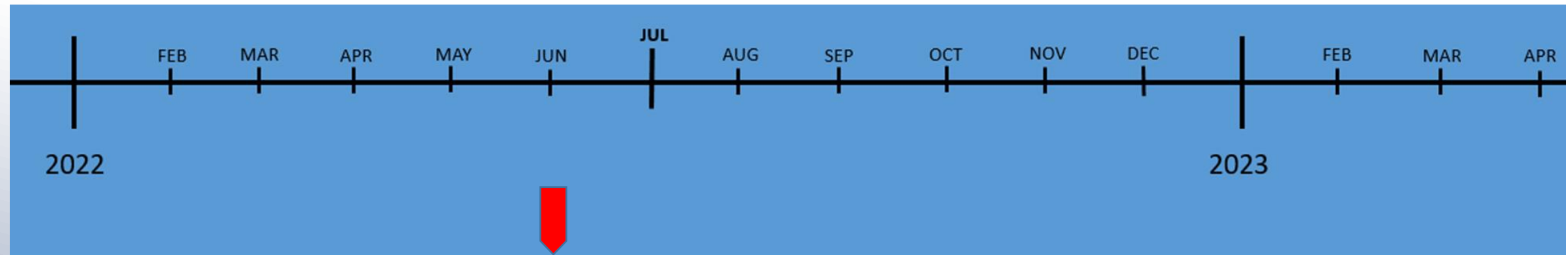


# U.S. Coast Guard Eleventh District





# U.S. Coast Guard Eleventh District





U.S. Coast Guard  
Eleventh District

# Path Forward

**Commander's Intent:** PAC-PARS initiated by D11 and sponsored by Pacific Area Command for D11 and D13 to evaluate all offshore waterway activities and potential measures to improve navigation/operations.

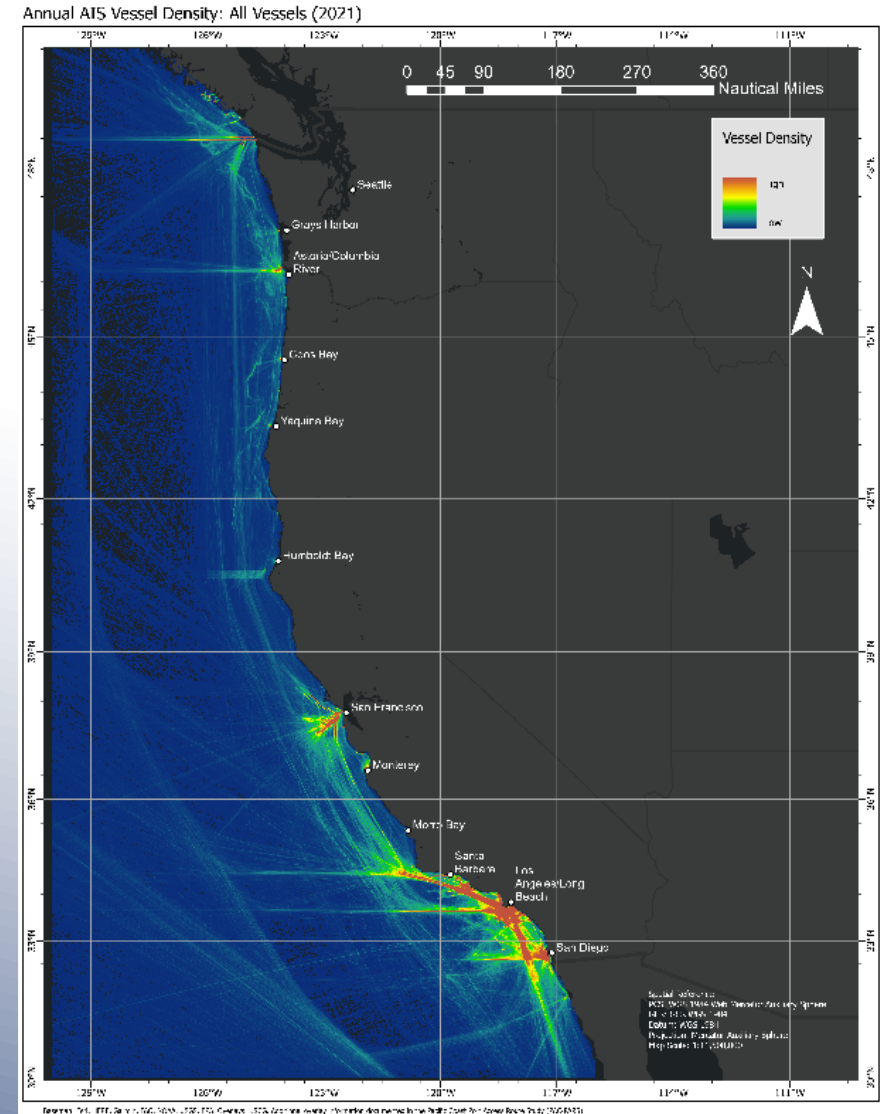
D13 and D11: Compile Data and Comments

Draft PAC-PARS and route through USCG Pacific Area Command

Distribute on the Federal Register

Conduct Outreach Strategy

Compile Comments for Final Study





U.S. Coast Guard  
Eleventh District

# Questions?

## Pacific Area Command

CDR Sara Conrad

[Sara.E.Conrad@uscg.mil](mailto:Sara.E.Conrad@uscg.mil)

LCDR Amanda Ryan

[Amanda.C.Ryan@uscg.mil](mailto:Amanda.C.Ryan@uscg.mil)

## Eleventh District

CDR William George

[William.J.George@uscg.mil](mailto:William.J.George@uscg.mil)

Mr. Tyrone Conner

[Tyrone.L.Conner@uscg.mil](mailto:Tyrone.L.Conner@uscg.mil)

## Thirteenth District

CDR Brendan Harris

[Brendan.J.Harris@uscg.mil](mailto:Brendan.J.Harris@uscg.mil)

Mr. John Moriarty

[John.F.Moriarty@uscg.mil](mailto:John.F.Moriarty@uscg.mil)

# Other Task Force Member Updates



# Task Force Questions and Discussion



# Closing Remarks & Adjournment

---

*Doug Boren, Pacific Regional Director, BOEM*

*Kourtney Vaccaro, Commissioner, California Energy Commission*





# Adjourn Task Force Meeting

## Return at 11:40



# Public Input Opportunity

---

Interested members of the public are encouraged to provide input on the topics discussed today



# Process Guidelines for Public Input Opportunity

- **Raise your hand to join the public input queue**
- **The facilitator will call on you when it is your turn to speak. You will then be unmuted**
  - If you are a phone call-in user, dial \*9 on your phone to Speak in order; facilitator will mind the queue
- **Provide your name and affiliation before you speak**
- **Can share a comment or ask a question (1-3 minutes TBD); please be respectful of everyone's time and opportunity to speak**
- **To enter into the discussion queue:**
  - **Click the “raise hand” icon in the top of the webinar window; click again to lower your hand after speaking**



# Thank you

BOEM California Task Force Coordinator:

[sara.guiltinan@boem.gov](mailto:sara.guiltinan@boem.gov)

(805) 233-5020

