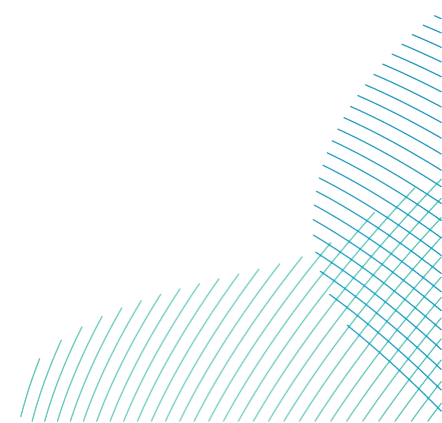




Gulf of America Offshore Wind RWE Progress Report

Document Date:	December 1, 2025
Document Number:	006480478-01
Revision Number:	02
Classification:	Public
Reporting Period	May 1, 2025 – October 31, 2025



Category	Information
Company	RWE Offshore US Gulf, LLC
Project	Gulf of America Offshore Wind
Package	N/A
Asset	Lease No. OCS-G 37334 (Lessee Company No. 15169)
Document Title	Gulf of America Offshore Wind RWE Progress Report
Ecodoc Number	006480478-01
Revision Number	02

This document and any information therein are confidential property of RWE Offshore Wind Gulf, LLC and without infringement, neither the whole nor any extract may be disclosed, loaned, copied or used for manufacturing, provision of services or other purposes whatsoever without prior written consent of RWE Offshore Wind Gulf, LLC, and no liability is accepted for loss or damage from any cause whatsoever from the use of the document. RWE Offshore Wind Gulf, LLC retains the right to alter the document at any time unless a written statement to the contrary has been appended.

Revision	Date	Status/Reason for Revision	Author	Checker	Approver
01	December 1 2025	Second Gulf of America Progress Report	A. Mayhew	R. Robins	D. Sieger
02	February 20 2026	Revisions to Gulf of America Progress Report	A. Mayhew	R. Robins	D. Sieger

Table of Contents

Executive Summary.....	1
1 Background and Purpose	2
1.1 Background of Gulf Offshore Wind Project	2
1.2 Purpose of the Biannual Progress Reports	4
2 Tribes/Tribal Nations	4
2.1 Summary of Engagements with Tribes/Tribal Nations	4
2.2 Potential Project Effects Related to Tribes/Tribal Nations' Interests.....	5
2.3 Upcoming Engagements with Tribes/Tribal Nations.....	5
3 Fisheries Engagements	9
3.1 Summary of Engagements with Fisheries.....	9
3.2 Potential Project Concerns Raised during Fisheries Engagements	12
3.3 Upcoming Fisheries Engagement Activities	13
4 Federal, State, and Local Agencies	14
4.1 Summary of Engagements with the Agencies.....	14
4.2 Potential Project Concerns Raised by the Agencies	16
4.3 Upcoming Engagement Activities with the Agencies.....	16
5 Other Stakeholders.....	16
5.1 Summary of Engagement Activities with Other Stakeholders	16
5.2 Potential Project Effects Related to Other Stakeholders	19
5.3 Upcoming Engagement Activities With Other Stakeholder.....	19
5.4 Coordination with other leaseholders.....	19
6 Survey Planning	19
7 Transmission	20

List of Tables

Table 1 Summary of engagement activities between RWE Offshore Wind Gulf, LLC, its Project team, and Tribes/Tribal Nations.....	7
Table 2 Fishery Engagements with RWE Offshore Wind Gulf, LLC and the Project team during the reporting period	10
Table 3 Potential project concerns raised during Fisheries Engagements	12
Table 4 Agency Engagements During the Reporting Period	15
Table 5 Other stakeholder engagements to date	18

List of Figures

Figure 1 Map showing the Gulf Lease Area	3
--	---

List of Appendices

Appendix A – Project Team Contact Information	21
---	----

Defined Key Terms

Term	Definition	Style & Usage Notes
RWE Offshore Wind Gulf Farm, also referred to as the "Project"	<p>Term includes the Project holistically, including the offshore and onshore components.</p> <p>Term also refers to the company holding the Bureau of Ocean Energy Management (BOEM) Lease OCS-G 37334 (RWE Offshore Gulf LLC)</p>	When referring to the overall Project, it is acceptable to refer to it as the "Project". Note capitalization.
Lease or Lease Area	<p>Formal term for the document that describes the terms and conditions of the Project's <i>Commercial Lease of Submerged Lands for Renewable Energy Development on the Outer Continental Shelf-Gulf 37334 (OCS-G 37334)</i> issued by BOEM. 102,480-acre, BOEM-designated, Renewable Energy Lease Area OCS-G 37334.</p>	<p>The signed Lease (and other information regarding leases in the Gulf of America) can be found at:</p> <p>https://www.boem.gov/sites/default/files/documents/renewable-energy/state-activities/Lease%20OCS-G%2037334-RWE%20Offshore%20US%20Gulf%20LLC_0.pdf</p>
leaseholder	Any company that holds a BOEM-issued offshore wind Lease	Note that leaseholder is one word and is not capitalized.

List of Acronyms and Abbreviations

Term	Definition
ACP	Agency Communications Plan
BOEM	Bureau of Ocean Energy Management
BSEE	Bureau of Safety and Environmental Enforcement
Company	RWE Offshore Wind Gulf, LLC
COP	Construction and Operations Plan
DOI	Department of the Interior
FCP	Fisheries Communications Plan
ft	feet
GLO	General Land Office
Gulf	Gulf of America
GW	gigawatt
km	kilometers
Lease	Commercial Lease of Submerged Lands for Renewable Energy Development on the Outer Continental Shelf, OCS-G 37334
m	meters
mi	miles
NATCP	Native American Tribes Communication Plan
NGO/eNGO	non-governmental organization/environmental non-governmental organization
nm	nautical miles
NOAA	National Oceanic and Atmospheric Administration
OCS	Outer Continental Shelf
OSW	Offshore wind

Term	Definition
SEFSC	NOAA Southeast Fisheries Science Center
SERO	Southeast Regional Office
U.S.	United States

Executive Summary

This is the second Progress Report submitted by RWE Offshore US Gulf, LLC (the Company) for Lease OCS-G -37334. Since obtaining the Lease in November 2023, the Company has actively engaged stakeholders across the Lease Development Area to support responsible development. However, due to the ongoing review of offshore wind projects and Lease Areas, the current scope of development activities has been temporarily reduced.

The key updates in this Progress Report include:

- Focused fisheries engagement: Fisheries engagement maintained through quarterly coordination with NOAA SERO/SEFSC, outreach to the Gulf Fishery Management Council Staff and Southern Shrimp Alliance. Fisheries Communication Plan translated into Vietnamese to enhance outreach.
- No new Tribal or agency engagement: Existing commitments remain in place; activity paused due to reduced development scope. The NATCP and ACP accepted in 2024 continue to guide the future engagement approach.
- Project activity clarified: No surveys conducted in 2025 and none are planned for 2026; transmission planning and export cable routing have not begun.
- Broader stakeholder outreach on hold: Historical engagement documented; future outreach will resume once substantive project milestones are available to share.
- Coordination update: Confirms no other federal leaseholders in the Gulf; engagement under the Louisiana state operating lease agreements limited to informal introductions.

These updates reflect a focused approach to maintaining critical relationships while deferring broader outreach until meaningful project milestones emerge.

A summary of the engagement activities held with Tribes/Tribal Nations is provided in Section 2, with Fisheries in Section 3, with Agencies in Section 4, and with other stakeholders in Section 5.

1 Background and Purpose

1.1 Background of Gulf Offshore Wind Project

In August 2023, RWE Offshore US Gulf, LLC (the Company) was selected as the provisional winner of a bid submitted to the U.S. Department of the Interior (DOI) Bureau of Ocean Energy Management (BOEM) for a Commercial Lease of Submerged Lands for Renewable Energy Development on the Outer Continental Shelf. The Lease Area (hereafter Lease or Lease Area) is designated as Outer Continental Shelf-Gulf 37334 (OCS-G 37334). The Lease became effective on November 1, 2023, then was amended and restated on January 16, 2025.

The Lease Area encompasses 102,480 acres of seabed in water depths ranging from approximately 49 to 79 feet (ft; 15 to 24 meters [m]) and 36 miles (mi; 58 kilometers [km] or 31 nautical miles [nm]) from its closest point to shore in Cameron Parish, Louisiana. When fully developed, the renewable energy capacity of the Lease Area is estimated to be 2 gigawatts (GW). The location of Lease Area OCS-G 37334 is shown on Figure 1.

This and other documents will also be posted to the BOEM webpage that is specifically related to Lease development activities.

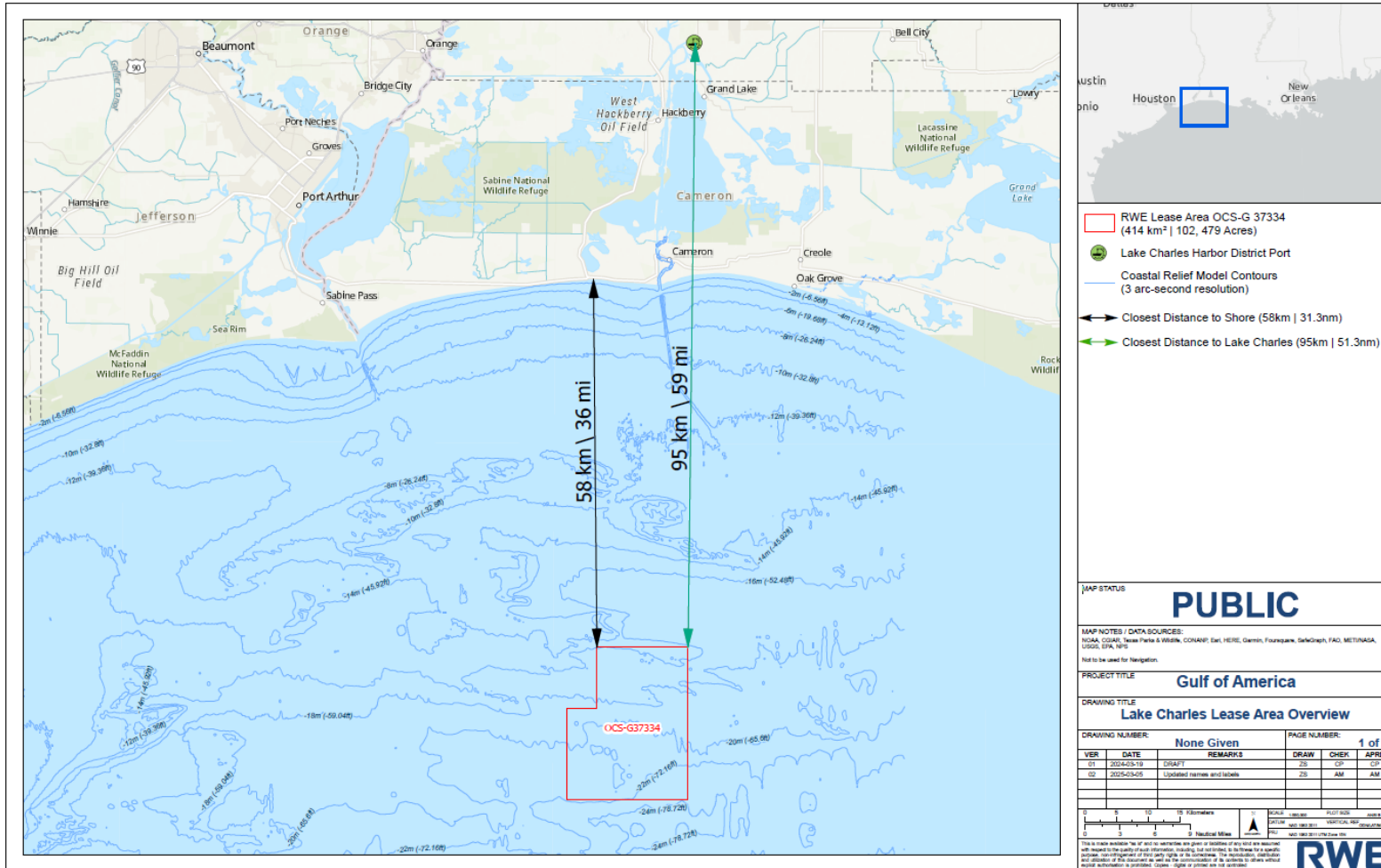


Figure 1 Map showing Lease Area OCS-G 37334

1.2 Purpose of the Biannual Progress Reports

In accordance with Lease Addendum “C”, 3.1, the Company must submit a Progress Report to BOEM every six months during the preliminary period and through approval of the Construction and Operations Plan (COP).

The purpose of Progress Reports is to document the overall progress and engagement activities that have been undertaken during the reporting period and planned for continued outreach. Progress Reports include engagement with Tribes/Tribal Nations and other parties, which include (as applicable) federal, state, and local agencies; commercial and recreational fishing industries and stakeholders; educational and research institutions; environmental and public interest non-governmental organizations (NGOs); mariners, the maritime industry, and other ocean users; and other unidentified stakeholders.

This Progress Report is the second since the Lease became effective on November 1, 2023.

2 Tribes/Tribal Nations

The Company believes it is important to recognize Tribes/Tribal Nations as the original and continuing stewards of the lands and waters in which we work. We acknowledge and respect the enduring historical, cultural, and personal connections between Tribes/Tribal Nations to the region, both those Tribes/Tribal Nations currently residing in the region and those that were removed from it. We believe that the insights and knowledge of Tribes/Tribal Nations can and should play an important role in creating diversified energy sources to help ensure that offshore renewable energy is developed in an environmentally, socially, and culturally sustainable manner.

Twenty-two Tribes/Tribal Nations, both federally recognized and non-federally recognized, were identified as having the potential for historical, cultural, or geographical ties to the area which encompasses the wind Lease Area and possible cable corridors and interconnections on shore.

A summary of engagement activities with Tribes/Tribal Nations held since the Lease was executed and anticipated to be held is provided in Sections 2.1 through 2.4, below. These sections provide an overview of engagement with potentially affected federally recognized and state recognized Tribes/Tribal Nations.

The Company is maintaining a Native American Tribal Communication Plan (NATCP). The NATCP was accepted by BOEM in November 2024 after review by interested Tribes/Tribal Nations. The NATCP can be found here: [RWE Offshore US Gulf NATCP](#).

2.1 Summary of Engagements with Tribes/Tribal Nations

Engagements with Tribes and Tribal Nations during the first reporting period focused on introductions with the Project team and feedback requests on the NATCP. Due to the reduced scope of development activities on this Project, previously anticipated Tribal engagement was not conducted during this reporting period.

The Company remains committed to connecting meaningfully with Tribal Councils, elders, and community leaders to better understand how to communicate and engage with Tribes/Tribal Nations most effectively. In addition to fulfilling the purpose of its Lease obligations related to the NATCP, the Project values the conversations these opportunities have presented to engage with and discuss shared priorities and relationship expectations.

During the first reporting period, the Company shared communications, including a written invitation to engage, the Lease Area map and the draft NATCP with all 22 Tribes/Tribal Nations listed in Table 1. The Affected Tribes/Tribal Nations were identified through a stakeholder mapping effort that started with research into Tribes/Tribal Nations previously identified as consulting parties for either state or federal agencies for projects within Louisiana. The draft stakeholder mapping results were revised to include the names of 14 additional federally recognized Tribes/Tribal Nations that previously expressed interest in offshore wind consultations in the Gulf to BOEM/BSEE (Bureau of Safety and Environmental Enforcement). For all 36 Tribes/Tribal Nations in the stakeholder mapping effort, information made publicly available by the individual Tribes/Tribal Nations through official websites, official social media pages, or other sources was used to identify self-professed interests in or connections to Louisiana. Review of organizations including the National Association of Tribal Historic Preservation Officers and the United South and Eastern Tribes, Inc. did not result in the identification of any additional federally recognized candidates for inclusion in the list of Affected Tribes. The list of Affected Tribes was developed from the 36 named Tribes/Tribal Nations included in the stakeholder mapping effort; however, only 22 were selected as having ties to the area. Other Tribes/Tribal Nations wishing to be engaged will be included but because of the limited work on the Gulf Lease at this time, the Company will send out additional letters once development activities begin in earnest again. A summary of these engagement activities to date is provided in Table 1.

2.2 Potential Project Effects Related to Tribes/Tribal Nations' Interests

Three concerns that were raised during 2024 outreach were:

- Ensuring that the Company keeps Tribal specific information confidential (raised during the preparation of the NATCP)
- Ensuring that the Company protects information concerning the locations of any culturally sensitive sites (raised during draft review of the NATCP)
- Concern regarding the historic shrimp industry. This will be addressed in conjunction with fisheries engagements

The Project will address these concerns as well as address any new concerns that may appear as the Lease is developed.

2.3 Upcoming Engagements with Tribes/Tribal Nations

During the next reporting period (November 1, 2025- April 30, 2026), the Project may engage with Tribes/Tribal Nations on the Company's general plans and ways to strengthen the communication processes between the Project and Tribes/Tribal Nations as envisioned in the NATCP. Engagement

will depend on new Project developments in order to avoid asking Tribes/Tribal Nations to devote resources to participate in discussions with no Project updates. No specific meetings are planned currently but the Company is eager to continue working with Tribes/Tribal Nations and have meetings when development activities increase.

Table 1 Summary of engagement activities between RWE Offshore Wind Gulf, LLC, its Project team, and Tribes/Tribal Nations

Focus of Discussion or Engagement	Tribe(s)	Summary of Engagement Activities and Discussion Topics	Follow-up Actions, Activities, Outcomes
Engagement Letters by Email (May 2024)	<p>Federally Recognized</p> <p>Chitimacha Tribe of Louisiana, Coushatta Tribe of Louisiana, Jena Band of Choctaw, Tunica-Biloxi Tribe of Louisiana, Quapaw Tribe of Oklahoma, Mississippi Band of Choctaw Indians, Alabama Coushatta Tribe of Texas, Caddo Nation, Choctaw Nation of Oklahoma, Seminole Nation of Oklahoma, Seminole Tribe of Florida</p> <p>Non-Federally Recognized</p> <p>Adai Caddo Indians of Louisiana, Bayou Lafourche Band of BCCM, Choctaw-Apache Tribe of Ebarb, Clifton Choctaw Tribe of Louisiana, Four Winds Cherokee, Grand Caillou/Dulac Band of BCCM, Jean Charles Choctaw Nation, Louisiana Band of Choctaw, Natchitoches Tribe of Louisiana, Pointe-au-Chien Indian Tribe, United Houma Nation</p>	Letter emailed extending offer to begin engagement with RWE	
Follow up by phone, email, and certified letters (June 2024)	<p>Federally Recognized</p> <p>Chitimacha Tribe of Louisiana, Coushatta Tribe of Louisiana, Jena Band of Choctaw, Tunica-Biloxi Tribe of Louisiana, Quapaw Tribe of Oklahoma, Mississippi Band of Choctaw Indians, Alabama Coushatta Tribe of Texas, Caddo Nation, Choctaw Nation of Oklahoma, Seminole Nation of Oklahoma, Seminole Tribe of Florida</p> <p>Non-Federally Recognized</p> <p>Adai Caddo Indians of Louisiana, Bayou Lafourche Band of BCCM, Choctaw-Apache Tribe of Ebarb, Clifton Choctaw Tribe of Louisiana, Four Winds Cherokee, Grand Caillou/Dulac Band of BCCM, Jean Charles Choctaw Nation, Louisiana Band of Choctaw, Natchitoches Tribe of Louisiana, Pointe-au-Chien Indian Tribe, United Houma Nation</p>	Follow-up communications for engagements.	
Email and certified mail (August 2024)	<p>Federally Recognized</p> <p>Chitimacha Tribe of Louisiana, Coushatta Tribe of Louisiana, Jena Band of Choctaw, Tunica-Biloxi Tribe of Louisiana, Quapaw Tribe of Oklahoma, Mississippi Band of Choctaw Indians, Alabama Coushatta Tribe of Texas, Caddo Nation, Choctaw Nation of Oklahoma, Seminole Nation of Oklahoma, Seminole Tribe of Florida</p> <p>Non-Federally Recognized</p> <p>Adai Caddo Indians of Louisiana, Bayou Lafourche Band of BCCM, Choctaw-Apache Tribe of Ebarb, Clifton Choctaw Tribe of Louisiana, Four Winds Cherokee, Grand Caillou/Dulac Band of BCCM, Jean Charles Choctaw Nation, Louisiana Band of Choctaw, Natchitoches Tribe of Louisiana, Pointe-au-Chien Indian Tribe, United Houma Nation</p>	Provided draft NATCP for review and comment	
Houma Virtual Meeting with Project team	United Houma Nation - State recognized	Introductory meeting and review of the NATCP	

Focus of Discussion or Engagement	Tribe(s)	Summary of Engagement Activities and Discussion Topics	Follow-up Actions, Activities, Outcomes
(July 2024)	<p>Federally Recognized</p> <p>Chitimacha Tribe of Louisiana, Coushatta Tribe of Louisiana, Jena Band of Choctaw, Tunica-Biloxi Tribe of Louisiana, Quapaw Tribe of Oklahoma, Mississippi Band of Choctaw Indians, Alabama Coushatta Tribe of Texas, Caddo Nation, Choctaw Nation of Oklahoma, Seminole Nation of Oklahoma, Seminole Tribe of Florida</p>	<p>Introduction letter sent by email to listed Tribes/Tribal Nations</p>	
<p>Tribal Relations Introduction Letter (January 2025)</p>	<p>Non-Federally Recognized</p> <p>Adai Caddo Indians of Louisiana, Bayou Lafourche Band of BCCM, Choctaw-Apache Tribe of Ebarb, Clifton Choctaw Tribe of Louisiana, Four Winds Cherokee, Grand Caillou/Dulac Band of BCCM, Jean Charles Choctaw Nation, Louisiana Band of Choctaw, Natchitoches Tribe of Louisiana, Pointe-au-Chien Indian Tribe, United Houma Nation</p>		
<p>Phone call with Tribal Relations Manager (January 2025)</p>	<p>Alabama-Coushatta Tribe of Texas Tribal Historic Preservation Officer</p>	<p>Call focused on RWE's vision for tribal engagement and identified potential areas for partnership, including renewable energy initiatives, community education, language preservation, and intellectual property protections</p>	

3 Fisheries Engagements

The Project team engaged with various fishery constituents identified as potentially interested in or affected by the Lease Area at a level reflecting the current scope of development activities for the Project. Engagement strategies have included one-on-one conversations, small group meetings, and presentations. Engagements during the period have included virtual formats (e.g., video, webinar, phone calls, & text).

The Company is maintaining a Fisheries Communication Plan (FCP) (Gulf Fisheries Communication Plan). The FCP was accepted by BOEM in August 2024 and has continued to build internal capacity to support future outreach and engagement activities. The FCP was also translated to Vietnamese based on discussions with the Southern Shrimp Alliance who indicated a significant portion of their fishermen speak Vietnamese as their primary language.

A summary of these engagement activities with Commercial and Recreational Fisheries and associated stakeholders for the reporting period is provided in Section 3.1. Please note that most engagement activities cover multiple topics and have potential relevance to multiple phases of development.

3.1 Summary of Engagements with Fisheries

Between April 1, 2025 and October 31, 2025, the Project team maintained focused engagements with fishery participants and constituents. Below provides a written summary of engagements listed in Table 2.

The Project has maintained engagement with National Oceanic Atmospheric Administration (NOAA) Southeast Regional Office (SERO) and NOAA Southeast Fisheries Science Center (SEFSC) through quarterly calls where fisheries and fisheries science, information sharing, and opportunities for collaboration occurred. The Project has also provided periodic updates or briefings, including overviews of commercial and recreational fisheries characterizations for the Project area, with the Gulf Council and the Southern Shrimp Alliance.

3.1.1 Collaboration, Knowledge, and Capacity Building

Engagements to inform development activities and proactively identify opportunities for collaboration continued during the reporting period and included the following:

- Quarterly calls with SERO/SEFSC for reciprocal education/data planning.
- Presentation on commercial and fisheries characterizations of Project area fisheries to Gulf Council staff and the Southern Shrimp Alliance.

Table 2 Fishery Engagements with RWE Offshore Wind Gulf, LLC and the Project team during the reporting period

Focus of Discussion or Engagement	Party(ies) (Number of Engagements)	Summary of Engagement Activities and Discussion Topics	Follow-up Actions, Activities, Outcomes
Presentation on fisheries characterization of commercial fisheries in the Project area, Project updates (September, 2025)	Commercial (2); includes commercial fisheries association	<ul style="list-style-type: none"> • Communication and engagement strategies, tools, and preferences • Seasonality, spatial distribution, and operational details for commercial fisheries, especially in and around the Lease Area • Update on Company participation in East and West Coast working groups working on compensatory mitigation and issues to support fisheries coexistence 	<ul style="list-style-type: none"> • Future opportunities to engage the association about the offshore wind (OSW) development and operational processes as needed
Presentation of fisheries characterization on commercial and recreational fisheries in Project area. (September 2025)	Regional Fishery Management Council staff (1)	<ul style="list-style-type: none"> • Seasonality, spatial distribution, and operational details for recreational and commercial fisheries, especially in and around the Lease Area 	<ul style="list-style-type: none"> • Forwarded lease area shapefile to Council staff

Focus of Discussion or Engagement	Party(ies) (Number of Engagements)	Summary of Engagement Activities and Discussion Topics	Follow-up Actions, Activities, Outcomes
<p>Update on Company’s participation in development of best practices and program design initiatives for compensatory mitigation and interest in fisheries monitoring (June 2025, September 2025)</p>	<p>Federal fisheries regulatory and science agencies (2)</p>	<ul style="list-style-type: none"> • Fisheries monitoring • Discussion of fisheries characterization of commercial and recreational fisheries in Project area. • Seasonality, spatial distribution, and operational details for recreational fisheries, especially in and around the Lease Area • NOAA science initiatives 	<ul style="list-style-type: none"> • Regular (quarterly) meetings to be held with SERO/SEFSC with a goal of two-way education and identification of areas for potential collaboration

3.2 Potential Project Concerns Raised during Fisheries Engagements

The Project identified several categories of potential concerns raised by fisheries participants and fishing communities during the previous reporting period, which can be found in Table 3. No new categories of concerns were raised during this reporting period. The Project Team will incorporate concerns related to the marine environment, safety, and access into the Project planning process across the Project’s workstreams.

Table 3 Potential project concerns raised during Fisheries Engagements

Topic	Concern(s)	Address or Response to Concern
Ecological/Engineering	Concerns about potential oil leakage from turbines, downstream effects (larval distribution), and impacts following decommissioning. Many constituents communicated positive expectations regarding artificial reef effects on the ecosystem.	As the managing bodies for OSW activities, BOEM assesses the management of spill/leakage risk for all OSW systems while BSEE evaluates all oil spill response plans (OSRPs) and oversees the maintenance and implementation of OSRPs. A 2013 study conducted by BOEM found that “the mostly likely types of releases... would cause minimal environmental consequences, which would be limited spatially and temporally to the vicinity of the point of release.” They also found the probability of a catastrophic event to be extremely small with a moderate environmental impact, were such an event to occur.
		Few studies examining the potential impacts of offshore wind on larval dispersal exist, but impacts are expected to be localized around turbines, including potentially positive interactions, such as those explored in a recent model of sea scallop larval dispersal near the Nantucket Lightship Closed Area linked here; Potential impacts of offshore wind energy development on physical processes and scallop larval dispersal over the US Northeast shelf - ScienceDirect
		Some constituents were concerned that potentially valuable ecological habitat created by OSW structures would be lost through the decommissioning process. Decommissioning activities and extent will be determined through a regulated public process including BSEE, BOEM, U.S. Coast Guard, NOAA, and the OSW developer(s). Constituents will have an opportunity to weigh in on this process at that time.
Safety	Concerns related to the ability of turbines to withstand hurricane conditions commonly experienced in the Gulf of America.	This is a primary concern of developers, as well. Creating an optimized wind turbine that can function efficiently in an environment with low annual wind speeds and withstand periodic hurricanes will be an engineering priority during the design phase. Developers will address this engineering consideration in the Construction and Operations Plan.
Inclusion	One group expressed concern and frustration in the level to which they were involved/consulted with during the BOEM siting process; however, another group expressed high satisfaction with the level to which they were involved/consulted throughout the initial siting process.	The Company will continue to engage and assist in educating fisheries constituents regarding OSW development and permitting processes.
Opportunities for collaboration	Multiple fisheries constituents expressed a desire to be considered not just as a constituent, but as a partner in	RWE collaborated with multiple government and academic institutions to propose a RESTORE project to convene a regional science collaborative to support the analysis of long-term habitat

the OSW story in the Gulf of America. Many are excited by the possibility of new artificial habitat in the Gulf of America and see the potential economic benefits and electrical stability OSW offers. Many see the potential community benefits from having OSW as a neighboring industry in the Gulf.

use and connectivity of marine life at artificial structures in the Gulf of America and collect baseline data. Although the study was not selected for funding, RWE has established important relationships within the marine science community that can provide a foundation for future collaboration.

RWE plans to continue engagement with fisheries constituents to identify areas of mutual interest.

3.3 Upcoming Fisheries Engagement Activities

The following are anticipated engagement activities:

- Quarterly virtual meetings with SERO/SEFSC to provide project updates, learn about survey/data collection processes in the Gulf of America, and find opportunities for future collaboration.
- Periodic engagement with commercial and recreational fisheries organizations or individuals. Informational materials will be developed and distributed to fisheries stakeholders as needed to communicate any future OSW development or permitting activities.
- Continued engagement with state and federal fisheries agencies.

4 Federal, State, and Local Agencies

Lease Addendum “C”, 3.1.3, details the requirements for the Company to engage and communicate with federal, state, and local regulatory and consulting agencies (herein defined as “the Agencies”). The Project will proactively engage with the Agencies at every stage of development to receive feedback and address comments. This section includes other outreach conducted with Agencies related to the Lease Area. Some Agency engagements may additionally be captured in other sections throughout this document.

The Company is maintaining an Agency Communication Plan (ACP) (Gulf Agency Communication Plan; ACP). The ACP was accepted by BOEM in August 2024.

4.1 Summary of Engagements with the Agencies

Due to the reduced scope of development activities on this Project, previously anticipated agency engagement was not conducted during this reporting period.

Table 4 Agency Engagements During the Reporting Period

Focus of Discussion or Engagement	Party(ies)	Summary of Engagement Activities and Discussion Topics	Follow-up Actions, Activities, Outcomes
Introductory meeting for Gulf Lease December 12, 2023	BOEM, RWE	Introduced Project team and BOEM attendees. Provided high-level schedule and project approach. Discussed communication protocols and desired outreach.	
Discuss timing of first progress report April 1, 2024	BOEM, RWE	Discussed when RWE should submit its first Progress Report.	BOEM took action to communicate to RWE when first Progress Report would be due.
Status of Communication Plans April 23, 2024	BOEM, RWE	Provided updates on Fisheries, Agency, and Native American Tribal Communications Plans.	BOEM requested that RWE reach out to the Texas Coastal Zone Management program to provide an introduction and project approach.
Introductory Meeting with Federal and State (LA) agencies April 30, 2024	Federal and State agencies, RWE	Introduced RWE and project team, solicited feedback on the ACP and how to best engage with agencies, reviewed the Lease Area and shared high-level schedule.	Responded to follow up questions from the introductory meeting.
Introductory meeting with Texas General Land Office (GLO) September 27, 2024	TX GLO and RWE	Introduced RWE and project team, reviewed the Lease Area, and provided high-level schedule	

4.2 Potential Project Concerns Raised by the Agencies

The Project previously engaged with state and federal agencies on potential questions, concerns, and opportunities related to proposed project development. Those stakeholders identified the following areas for continued discussion:

- The Gulf has significant sand resources and the Project will need to take these under consideration during development of the Lease and cable corridors

4.3 Upcoming Engagement Activities with the Agencies

During the next reporting period, the Project anticipates the following engagement activities are likely to occur with the Agencies:

- Potential project update to all agencies in 2026 if any significant Project developments arise.

5 Other Stakeholders

Other stakeholder entities that could potentially be affected by development activities may include:

- Coastal communities;
- Educational and research institutions;
- eNGOs and NGOs;
- Mariners and the maritime industry;
- Ocean users;
- Submarine cable operators; and
- Underserved communities

Not all of these groups will be contacted during each reporting period and some engagements may be captured in the activities summarized in other sections.

5.1 Summary of Engagement Activities with Other Stakeholders

Due to the scope of development activities on this Project, previously anticipated stakeholder engagement was not conducted during this reporting period.

In previous engagement activities the Company placed a strong emphasis on cultivating solid support from key local stakeholders. This was accomplished by maximizing the positive impacts on local organizations while integrating our efforts with existing local initiatives centered around offshore wind. The multifaceted approach was dedicated to educating stakeholders about the intricacies of the offshore wind industry and the specific objectives of the development of the Lease. By advancing the commercial viability of offshore wind, we endeavored to contribute substantially to the state's

economic development goals. Concerted efforts were aimed at fostering a collaborative environment that bolsters both the Project's success and the broader community's prosperity. Specific engagements included the following:

- LA Wind Week Engagements
- Entergy Memorandum of Understanding Engagement
- H2theFuture Engagement
- Gulf Louisiana Offshore Energy Engagement
- NOAA Hazardous Weather Testbed Grant Engagement
- Nunez Engagement
- LA Offshore Wind Roadmap engagement

When development activities resume, the Company looks forward to re-engaging with the stakeholders listed above as well as any others interested in learning more about offshore wind in the Gulf. Stakeholder engagements to date can be found in Table 5.

Table 5 Other stakeholder engagements to date

Focus of Discussion or Engagement	Summary of Engagement Activities and Discussion Topics
City of Lake Charles (January 2024)	Provided overview of RWE and listened to the City’s priorities for renewable energy.
Gulf Offshore Logistics (GOL) (February 2024)	Provided overview of RWE and learned that GOL is looking to add OSW to their portfolio of industries they'd like to serve.
Gulf of America Shareholder's Alliance (April 2024)	Discussed overlap with fishery, general concerns, potential for support and partnership, especially regarding communications. Expressed cautious optimism and support for the project.
Gulf Island Fabrication (GIF) (April 2024)	Provided overview of RWE. GIF expressed interest in supplying materials to the Project.
Port Fourchon (April 2024)	Provided overview of RWE. Learned that Port Fourchon infrastructure investments are needed to accommodate offshore wind.
Oceantic International Partnering Forum (April 2024)	The Company sponsored and participated in the yearly conference.
National Wildlife Federation (NFW) (April 2024)	Provided overview of RWE to NWF ENGO coalition. They are working to support the responsible development of OSW in the Gulf.
Alliance for Affordable Energy (July 2024)	Provided overview of RWE, general offshore wind topics, industry developments, and offtake opportunities.
BlueGreen Alliance August 2024	Provided overview of RWE and discussed labor union jobs.
Sponsor of Louisiana Wind Week (January 2024 and 2025)	Participated in the event including speaking opportunities and general engagement.

5.2 Potential Project Effects Related to Other Stakeholders

The Project previously engaged with local communities and stakeholders on potential questions, concerns, and opportunities related to proposed project development. Those stakeholders identified the following areas for continued discussion:

- Positive effect of utilizing existing ports and making what may be considered minimal upgrades to support offshore wind

5.3 Upcoming Engagement Activities With Other Stakeholder

During the next reporting period, the Project anticipates continuing engagement with interested parties reflected in Table 5 as well as new entities and stakeholders, when new Project updates are available. The Project will continue to identify communities with limited proficiency in English and develop strategies to reach them through other means and will engage in culturally diverse community events when possible. No specific meetings are planned currently but the Company will continue to work with key stakeholders in the area and hold meetings as necessary.

5.4 Coordination with other leaseholders

Currently, there are no other federal leaseholders in the Gulf. However, a Louisiana state operating agreement exists and the Project has made introductions but no formal meetings have been conducted.

6 Survey Planning

The Company does not have a timeline of when surveys, either onshore or offshore, will begin. No surveys were conducted in 2025 and no surveys are planned for 2026.

7 Transmission

Transmission planning and export cable routing has not yet begun but will include engagement with Tribes and all other stakeholders as part of the planning process.

Appendix A – Project Team Contact Information

Name/Title	Role	Contact Information
Daniel Sieger Development Director	Oversees development of the Project including market strategy	Daniel.Sieger@rwe.com (857) 472-3459
Amanda Mayhew Senior Permitting Manager	Manages permitting for the Project: primary POC for the ACP	Amanda.Mayhew@rwe.com (804) 536-8002
Rick Robins Director of Marine Affairs and Fisheries Liaison (Acting)	Oversees marine affairs and fisheries engagement for the Project	Rick.Robins@rwe.com (757) 876-3778