

Base Photographic Documentation

Date (MM/DD/YYYY):	2/02/2023
Time (24hr):	14:35
GPS Longitude:	-72.73278686
GPS Latitude:	40.7701585
Viewpoint Elevation (ft):	9.892
Camera Height (ft):	5.41
Camera Heading (°):	190
Camera Direction:	S

Camera Information

Camera Make & Model:	Canon EOS 5DS R
Camera Sensor Size:	36mm x 24mm
Lens Make & Model:	Sigma F1.4 DG HSM A022
Lens Focal Length:	20mm
Field of View:	65.47° (H) / 46.397° (V)

Sun And Weather Information

Sun Azimuth:	219.31
Sun Elevation:	22.8
Lighting Angle (On Turbines):	Top-Right Lit
Weather Conditions:	Partly Cloudy
Maximum Visibility (NM):	15.47
Temperature (°F):	38
Temperature (°C):	3.33
Humidity (%):	75

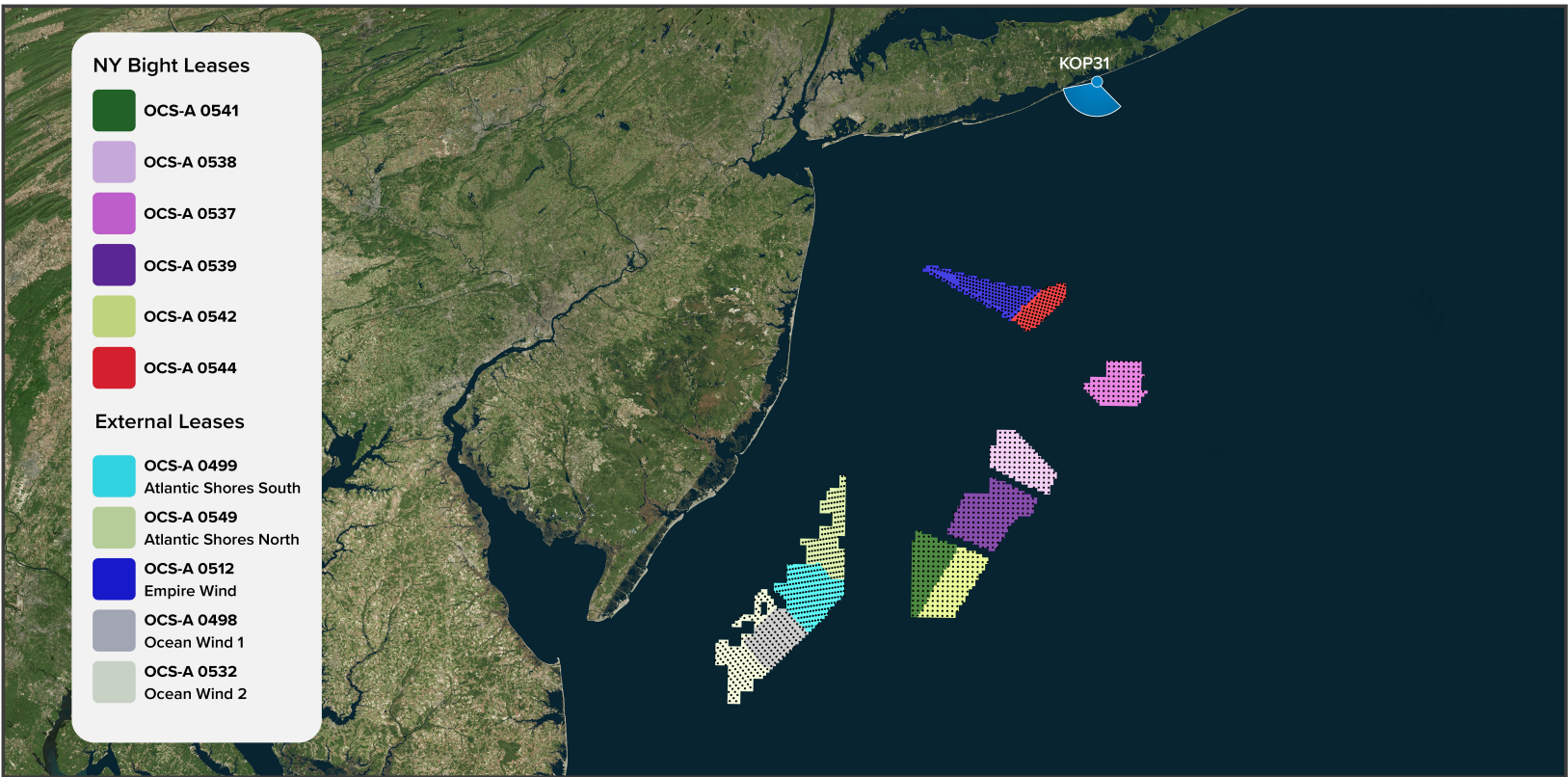
Viewing Instructions

11 x 17 inch Printed Display:	Distance is 19.7 inches (500mm)
On-Screen Display:	Distance is 19.7 inches (500mm)

Image Preview



Context Map



● Key Observation Point (KOP) ● Turbines

KOP 31: Westhampton Beach | Season: Winter | Time of Day: Late-Noon

NY Bight Turbine Information - 1312ft (399.9m)

Lease Area	Distance to Nearest Turbine in Miles (km)	Turbines Visible		
		Blade Tip	Hub	Mid Tower
Total	-	110	23	0
OCS-A 0544	33.86 (54.49)	110	23	0
OCS-A 0537	49.32 (79.37)	0	0	0
OCS-A 0538	69.85 (112.42)	0	0	0
OCS-A 0539	82.30 (132.45)	0	0	0
OCS-A 0541	100.32 (161.44)	0	0	0
OCS-A 0542	100.18 (161.23)	0	0	0

Blade tip counts are a summation of only blade tips visible, only hubs visible, and mid-towers visible. Hub counts are a summation of only hubs visible and mid towers visible.

Turbine Visibility	Turbine Visibility & Percentage
Amount of Nearest Turbine Hidden in ft (m)	563.0 (171.6)
Percent of Nearest Turbine Hidden (%)	42.9%
Amount of Nearest Turbine Visible in ft (m)	749.1 (228.3)
Percent of Nearest Turbine Visible (%)	57.1%

NY Bight Turbine Specifications

Turbine Components	Measurements ft (m)
Rotor Diameter in ft (m)	1212 (369.4)
Total Height to Tip of Blade in ft (m)	1312 (399.9)
Hub Height in ft (m)	706 (215.2)
Support Structure Height in ft (m)	25 (7.6)
Service Platform in ft (m)	100 (30.5) × 200 (61.0) Steel Platform above MWS
Total Number of Turbines	1481

NY Bight Turbine Information - 853ft (260m)

Lease Area	Distance to Nearest Turbine in Miles (km)	Turbines Visible		
		Blade Tip	Hub	Mid Tower
Total	-	52	0	0
OCS-A 0544	33.86 (54.49)	52	0	0
OCS-A 0537	49.32 (79.37)	0	0	0
OCS-A 0538	69.85 (112.42)	0	0	0
OCS-A 0539	82.30 (132.45)	0	0	0
OCS-A 0541	100.32 (161.44)	0	0	0
OCS-A 0542	100.18 (161.23)	0	0	0

Blade tip counts are a summation of only blade tips visible, only hubs visible, and mid-towers visible. Hub counts are a summation of only hubs visible and mid towers visible.

Turbine Visibility	Turbine Visibility & Percentage
Amount of Nearest Turbine Hidden in ft (m)	563.0 (171.6)
Percent of Nearest Turbine Hidden (%)	66.0%
Amount of Nearest Turbine Visible in ft (m)	290.1 (88.4)
Percent of Nearest Turbine Visible (%)	34%

NY Bight Turbine Specifications

Turbine Components	Measurements ft (m)
Rotor Diameter in ft (m)	722 (220.1)
Total Height to Tip of Blade in ft (m)	853 (260)
Hub Height in ft (m)	361 (110)
Support Structure Height in ft (m)	25 (7.6)
Service Platform in ft (m)	100 (30.5) × 200 (61.0) Steel Platform above MWS
Total Number of Turbines	1481

External Turbine Information

Lease Area	Distance to Nearest Turbine in Miles (km)	Turbines Visible		
		Blade Tip	Hub	Mid Tower
Total	-	43	0	N/A
OCS-A 0499	N/A	0	0	N/A
OCS-A 0549	N/A	0	0	N/A
OCS-A 0512	N/A	43	0	N/A
OCS-A 0498	N/A	0	0	N/A
OCS-A 0532	N/A	0	0	N/A

Cumulative Turbine Visibility
(Total WTG Count for NY Bight + External Leases)

1312ft (399.9m)			853ft (260m)		
Blade Tip	Hub	Mid Tower	Blade Tip	Hub	Mid Tower
153	23	0	95	0	0

The cumulative mid tower counts for both turbine heights are conservative values due to having no mid tower data for the external leases.

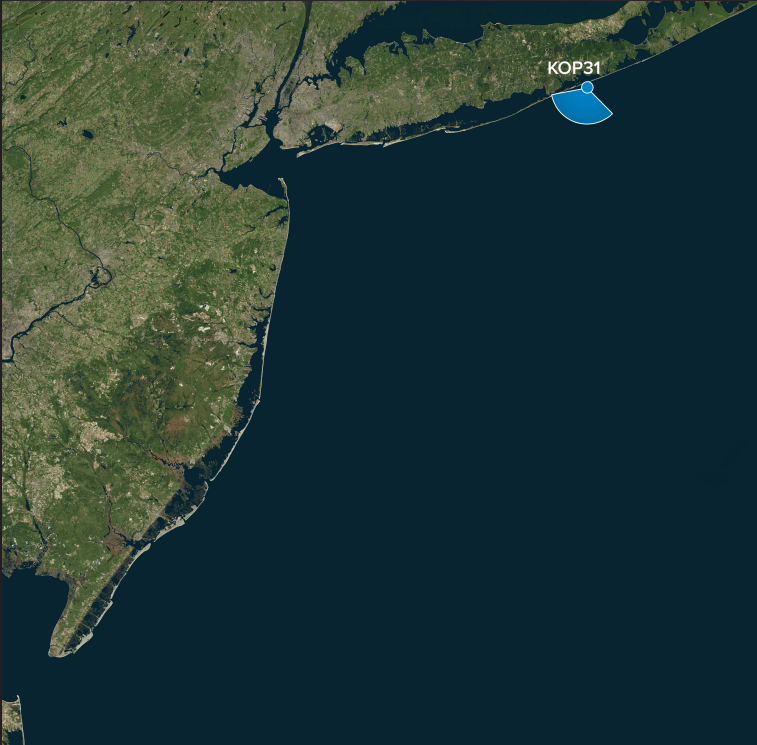
External Turbine Specifications

Lease Area	Rotor Diameter in ft (m)	Total Height to Tip of Blade in ft (m)	Hub Height in ft (m)	Support Structure Height in ft (m)
OCS-A 0499	918.6 (279.9)	1049 (319.7)	577 (176)	25 (7.6)
OCS-A 0549	918.6 (279.9)	1049 (319.7)	577 (176)	25 (7.6)
OCS-A 0512	853 (259.9)	951 (290)	525 (160)	25 (7.6)
OCS-A 0498	788 (240.1)	906 (276)	512 (156)	25 (7.6)
OCS-A 0532	788 (240.1)	906 (276)	512 (156)	25 (7.6)



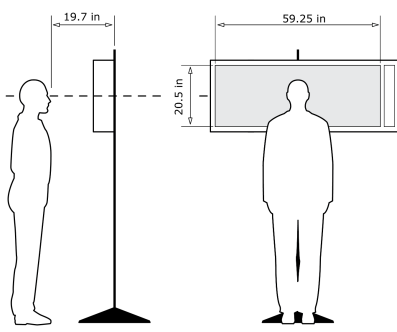
KOP 31, Westhampton Beach, Late-Noon, Heading 190° - Existing View

For on-screen display:
Scale bar to be 4 inches wide
Viewing distance 19.7 inches



Latitude: 40.7701585
Longitude: -72.73278686
Elevation of Viewpoint Position: 9.892
Height of Camera Above Ground: 5.41
Date of Photography: 2/02/2023 at 14:35
Horizontal Field of View: 124°
Vertical Field of View: 55°

CORRECT VIEWING OF TRUEVIEW™ PHOTO SIMULATIONS



NOTES:

Viewpoint locations have been precision surveyed by
New York City Land Surveyors PC
63 Montgomery Avenue
Staten Island NY 10301

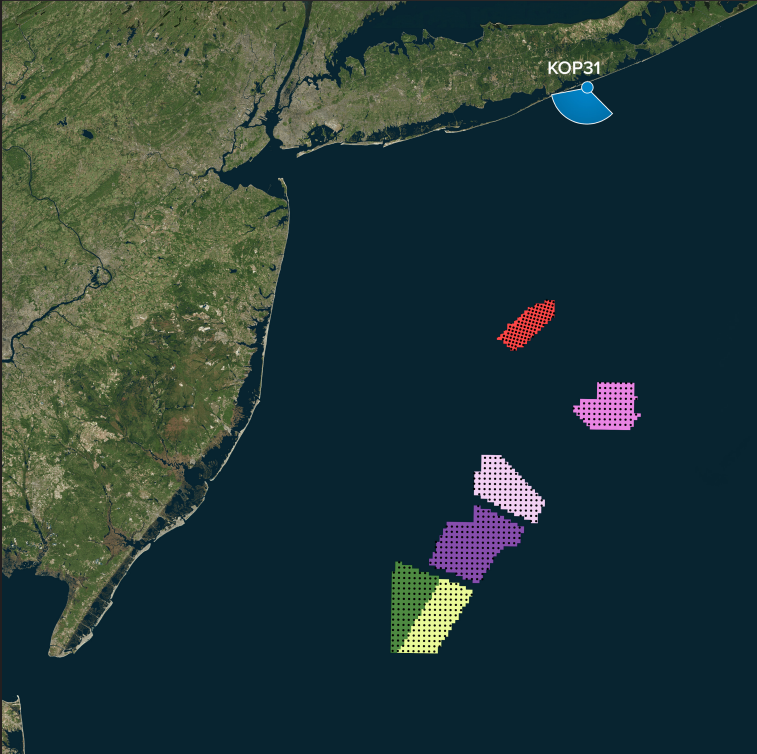
Heights are above mean sea level.
Structure design and placement are subject to final engineering.
No part of this photo simulation shall be altered in any way.

Photo Simulation Created Using
TrueView™ Technology
(Patent No.: US 6,184,906 B2)
Provided by



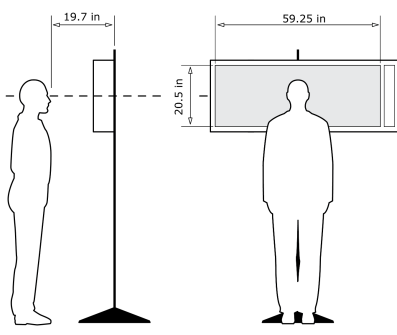
KOP 31, Westhampton Beach, Late-Noon, Heading 190° - **Proposed View - NY Bight Leases (853ft) - Predicted Visibility**

For on-screen display:
Scale bar to be 4 inches wide
Viewing distance 19.7 inches



Latitude: 40.7701585
Longitude: -72.73278686
Elevation of Viewpoint Position: 9.892
Height of Camera Above Ground: 5.41
Date of Photography: 2/02/2023 at 14:35
Horizontal Field of View: 124°
Vertical Field of View: 55°
Nearest Turbine: 33.9mi (54.5km) (OCS-A 0544)
Furthest Visible Turbine: 40.5mi (65.2km) (OCS-A 0544)
Horizontal Field of View the Projects Occupy: 8.9°

CORRECT VIEWING OF TRUEVIEW™ PHOTO SIMULATIONS



NOTES:

Viewpoint locations have been precision surveyed by
New York City Land Surveyors PC
63 Montgomery Avenue
Staten Island NY 10301

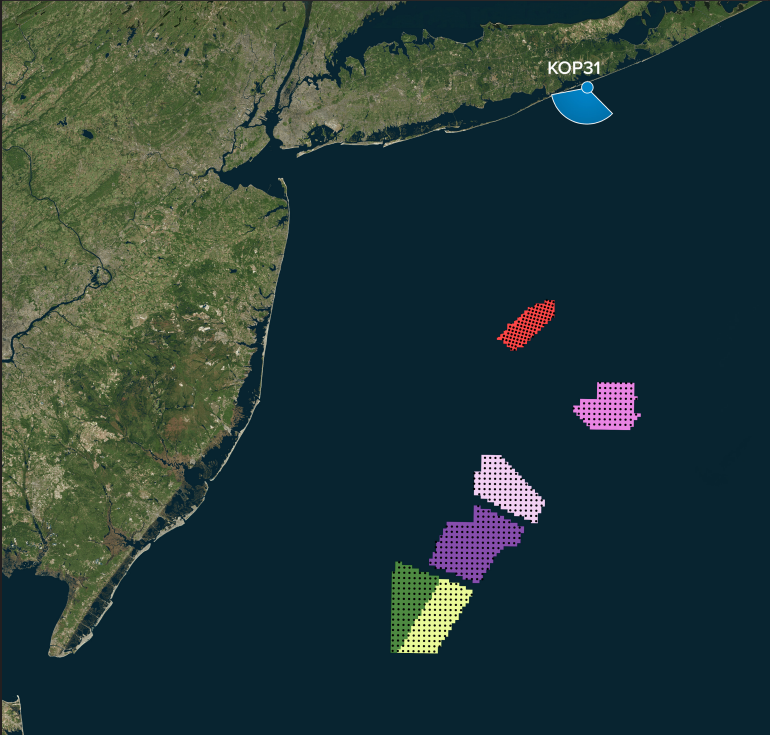
Heights are above mean sea level.
Structure design and placement are subject to final engineering.
No part of this photo simulation shall be altered in any way.

Photo Simulation Created Using
TrueView™ Technology
(Patent No.: US 6,184,906 B2)
Provided by



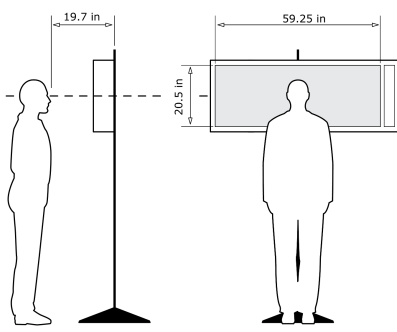
KOP 31, Westhampton Beach, Late-Noon, Heading 190° - Proposed View - NY Bight Leases (853ft) - Predicted Visibility

For on-screen display:
Scale bar to be 4 inches wide
Viewing distance 19.7 inches



Latitude: 40.7701585
Longitude: -72.73278686
Elevation of Viewpoint Position: 9.892
Height of Camera Above Ground: 5.41
Date of Photography: 2/02/2023 at 14:35
Horizontal Field of View: 124°
Vertical Field of View: 55°
Nearest Turbine: 33.9mi (54.5km) (OCS-A 0544)
Furthest Visible Turbine: 40.5mi (65.2km) (OCS-A 0544)
Horizontal Field of View the Projects Occupy: 8.9°

CORRECT VIEWING OF TRUEVIEW™ PHOTO SIMULATIONS



NOTES:
Viewpoint locations have been precision surveyed by
New York City Land Surveyors PC
63 Montgomery Avenue
Staten Island NY 10301

Heights are above mean sea level.
Structure design and placement are subject to final engineering.
No part of this photo simulation shall be altered in any way.

Photo Simulation Created Using
TrueView™ Technology
(Patent No.: US 6,184,906 B2)
Provided by



For on-screen display:
Scale bar to be 4 inches wide
Viewing distance 19.7 inches



For on-screen display:
Scale bar to be 4 inches wide
Viewing distance 19.7 inches



For on-screen display:
Scale bar to be 4 inches wide
Viewing distance 19.7 inches



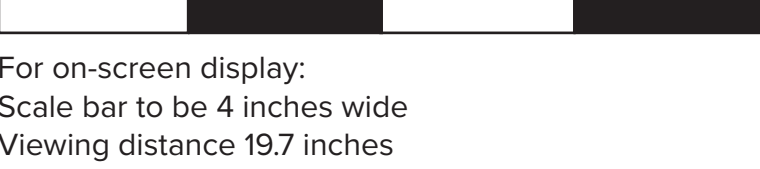
For on-screen display:
Scale bar to be 4 inches wide
Viewing distance 19.7 inches



For on-screen display:
Scale bar to be 4 inches wide
Viewing distance 19.7 inches



KOP 31, Westhampton Beach, Late-Noon, Heading 190° - **Proposed View - NY Bight Leases (853ft) - Maximum Visibility**



New York Bight

Westhampton Beach
Camera Heading 190°

● Viewpoint Location

● Turbines

Latitude: 40.7701585

Longitude: -72.73278686

Elevation of Viewpoint Position: 9.892

Height of Camera Above Ground: 5.41

Date of Photography: 2/02/2023 at 14:35

Horizontal Field of View: 124°

Vertical Field of View: 55°

Nearest Turbine: 33.9mi (54.5km) (OCS-A 0544)

Furthest Visible Turbine: 40.5mi (65.2km) (OCS-A 0544)

Horizontal Field of View the Projects Occupy: 8.9°

CORRECT VIEWING OF TRUEVIEW™ PHOTO SIMULATIONS

NOTES:

Viewpoint locations have been precision surveyed by
New York City Land Surveyors PC
63 Montgomery Avenue
Staten Island NY 10301

Heights are above mean sea level.
Structure design and placement are subject to final engineering.
No part of this photo simulation shall be altered in any way.

Photo Simulation Created Using
TrueView™ Technology
(Patent No.: US 6,184,906 B2)
Provided by

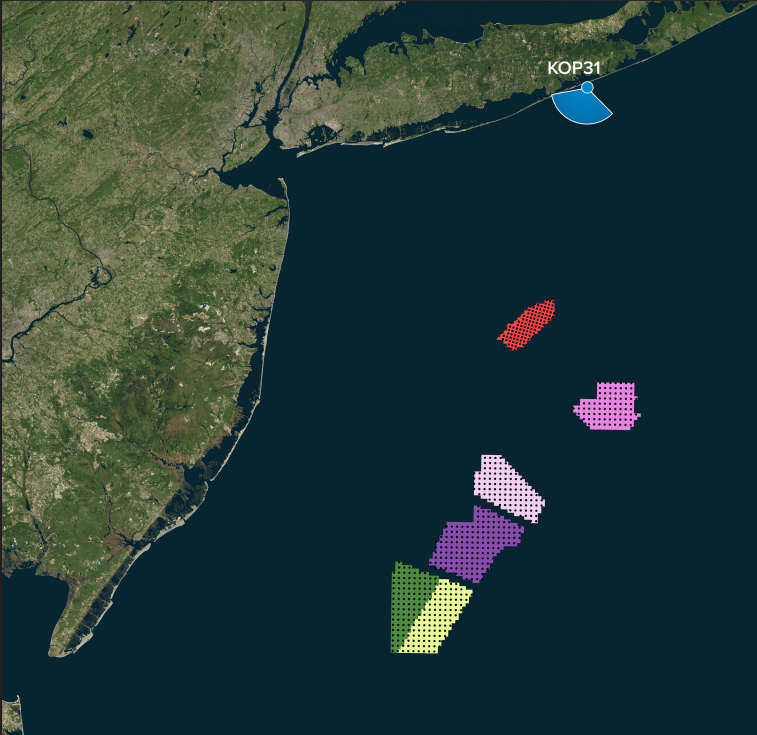
Truescape®
truescape.com

2/02/2023 at 14:35 - KOP 31



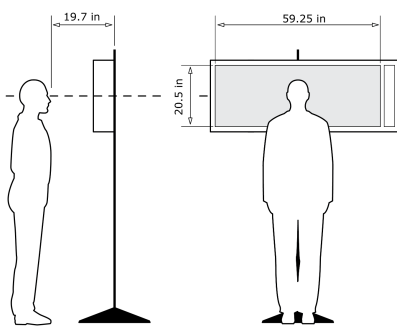
KOP 31, Westhampton Beach, Late-Noon, Heading 190° - Proposed View - NY Bight Leases (853ft) - Maximum Visibility

For on-screen display:
Scale bar to be 4 inches wide
Viewing distance 19.7 inches



Latitude: 40.7701585
Longitude: -72.73278686
Elevation of Viewpoint Position: 9.892
Height of Camera Above Ground: 5.41
Date of Photography: 2/02/2023 at 14:35
Horizontal Field of View: 124°
Vertical Field of View: 55°
Nearest Turbine: 33.9mi (54.5km) (OCS-A 0544)
Furthest Visible Turbine: 40.5mi (65.2km) (OCS-A 0544)
Horizontal Field of View the Projects Occupy: 8.9°

CORRECT VIEWING OF TRUEVIEW™ PHOTO SIMULATIONS



NOTES:
Viewpoint locations have been precision surveyed by
New York City Land Surveyors PC
63 Montgomery Avenue
Staten Island NY 10301

Heights are above mean sea level.
Structure design and placement are subject to final engineering.
No part of this photo simulation shall be altered in any way.

Photo Simulation Created Using
TrueView™ Technology
(Patent No.: US 6,184,906 B2)
Provided by



For on-screen display:
Scale bar to be 4 inches wide
Viewing distance 19.7 inches



For on-screen display:
Scale bar to be 4 inches wide
Viewing distance 19.7 inches



For on-screen display:
Scale bar to be 4 inches wide
Viewing distance 19.7 inches



For on-screen display:
Scale bar to be 4 inches wide
Viewing distance 19.7 inches

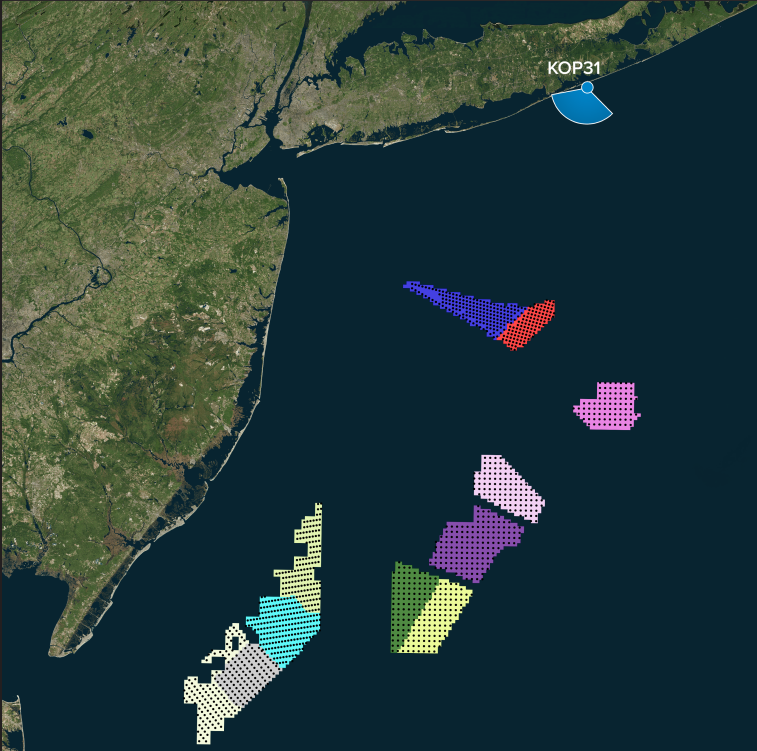


For on-screen display:
Scale bar to be 4 inches wide
Viewing distance 19.7 inches



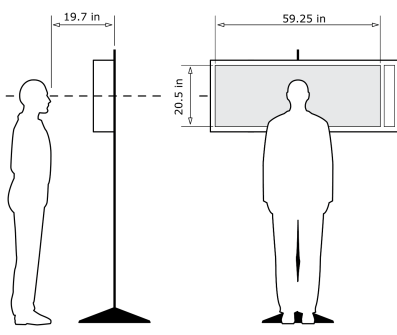
KOP 31, Westhampton Beach, Late-Noon, Heading 190° - **Proposed View - Cumulative - External Leases and NY Bight Leases (853ft) - Predicted Visibility**

For on-screen display:
Scale bar to be 4 inches wide
Viewing distance 19.7 inches



Latitude: 40.7701585
Longitude: -72.73278686
Elevation of Viewpoint Position: 9.892
Height of Camera Above Ground: 5.41
Date of Photography: 2/02/2023 at 14:35
Horizontal Field of View: 124°
Vertical Field of View: 55°
Nearest Turbine: 33.9mi (54.5km) (OCS-A 0544)
Furthest Visible Turbine: 42.5mi (68.4km) (OCS-A 0512)
Horizontal Field of View the Projects Occupy: 22.3°

CORRECT VIEWING OF TRUEVIEW™ PHOTO SIMULATIONS



NOTES:

Viewpoint locations have been precision surveyed by
New York City Land Surveyors PC
63 Montgomery Avenue
Staten Island NY 10301

Heights are above mean sea level.
Structure design and placement are subject to final engineering.
No part of this photo simulation shall be altered in any way.

Photo Simulation Created Using
TrueView™ Technology
(Patent No.: US 6,184,906 B2)
Provided by



KOP 31, Westhampton Beach, Late-Noon, Heading 190° - **Proposed View - Cumulative - External Leases and NY Bight Leases (853ft) - Predicted Visibility**

For on-screen display:
Scale bar to be 4 inches wide
Viewing distance 19.7 inches

New York Bight

Westhampton Beach
Camera Heading 190°

● Viewpoint Location

● Turbines

Latitude: 40.7701585

Longitude: -72.73278686

Elevation of Viewpoint Position: 9.892

Height of Camera Above Ground: 5.41

Date of Photography: 2/02/2023 at 14:35

Horizontal Field of View: 124°

Vertical Field of View: 55°

Nearest Turbine: 33.9mi (54.5km) (OCS-A 0544)

Furthest Visible Turbine: 42.5mi (68.4km) (OCS-A 0512)

Horizontal Field of View the Projects Occupy: 22.3°

CORRECT VIEWING OF TRUEVIEW™ PHOTO SIMULATIONS

NOTES:

Viewpoint locations have been precision surveyed by
New York City Land Surveyors PC
63 Montgomery Avenue
Staten Island NY 10301

Heights are above mean sea level.
Structure design and placement are subject to final engineering.
No part of this photo simulation shall be altered in any way.

Photo Simulation Created Using
TrueView™ Technology
(Patent No.: US 6,184,906 B2)
Provided by

Truescape®
truescape.com

2/02/2023 at 14:35 - KOP 31



For on-screen display:
Scale bar to be 4 inches wide
Viewing distance 19.7 inches



For on-screen display:
Scale bar to be 4 inches wide
Viewing distance 19.7 inches



For on-screen display:
Scale bar to be 4 inches wide
Viewing distance 19.7 inches



For on-screen display:
Scale bar to be 4 inches wide
Viewing distance 19.7 inches

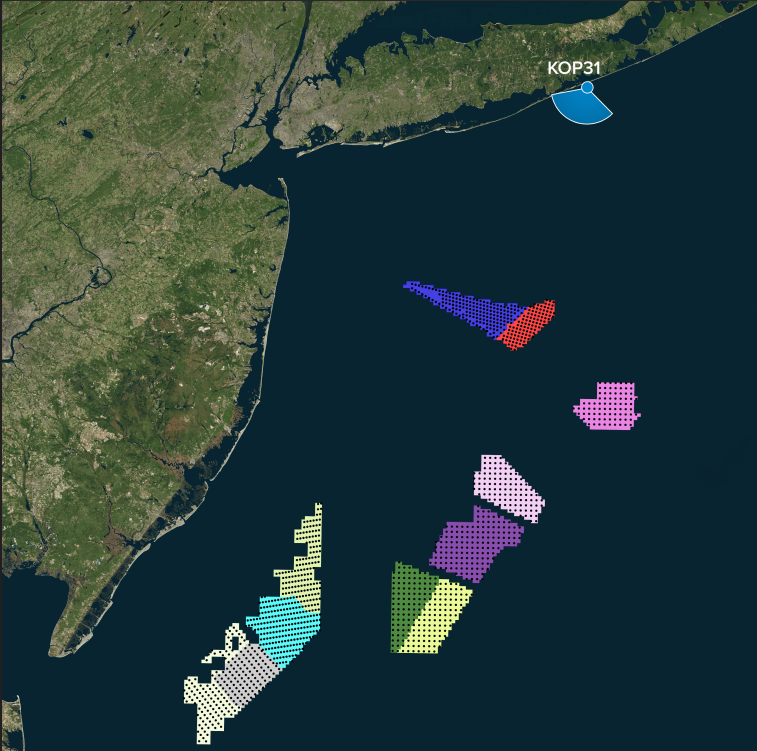


For on-screen display:
Scale bar to be 4 inches wide
Viewing distance 19.7 inches



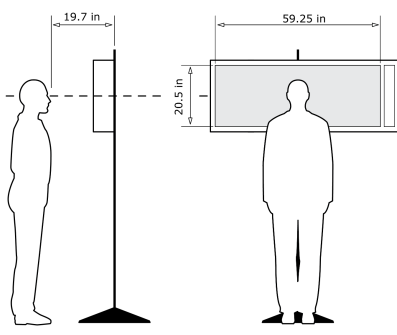
KOP 31, Westhampton Beach, Late-Noon, Heading 190° - **Proposed View - Cumulative - External Leases and NY Bight Leases (853ft) - Maximum Visibility**

For on-screen display:
Scale bar to be 4 inches wide
Viewing distance 19.7 inches



Latitude: 40.7701585
Longitude: -72.73278686
Elevation of Viewpoint Position: 9.892
Height of Camera Above Ground: 5.41
Date of Photography: 2/02/2023 at 14:35
Horizontal Field of View: 124°
Vertical Field of View: 55°
Nearest Turbine: 33.9mi (54.5km) (OCS-A 0544)
Furthest Visible Turbine: 42.5mi (68.4km) (OCS-A 0512)
Horizontal Field of View the Projects Occupy: 22.3°

CORRECT VIEWING OF TRUEVIEW™ PHOTO SIMULATIONS



NOTES:

Viewpoint locations have been precision surveyed by
New York City Land Surveyors PC
63 Montgomery Avenue
Staten Island NY 10301

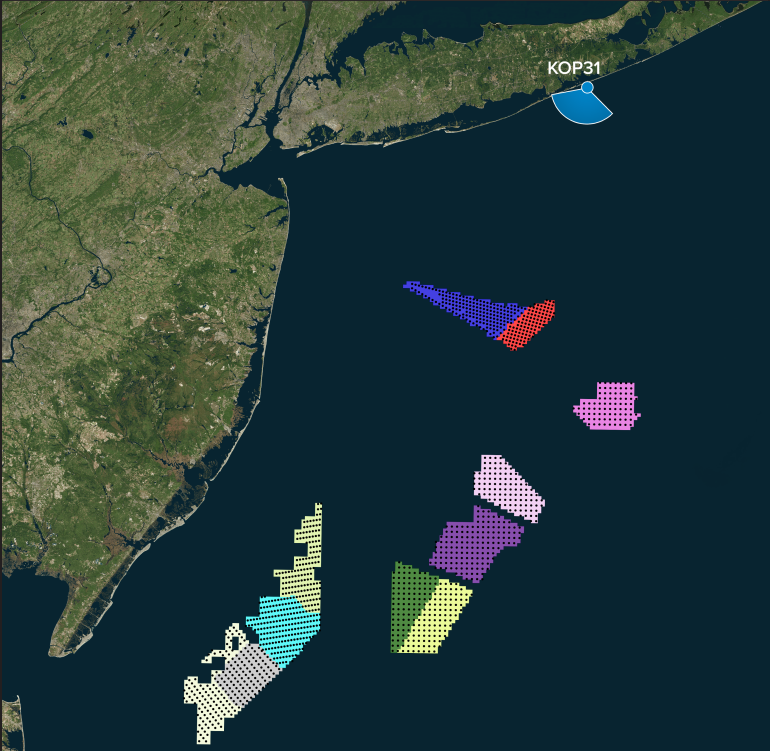
Heights are above mean sea level.
Structure design and placement are subject to final engineering.
No part of this photo simulation shall be altered in any way.

Photo Simulation Created Using
TrueView™ Technology
(Patent No.: US 6,184,906 B2)
Provided by



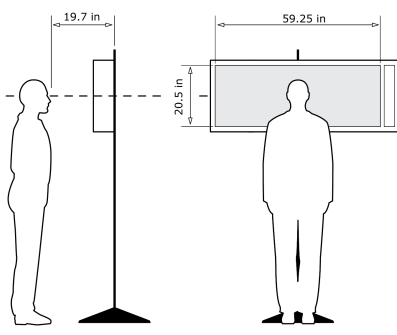
KOP 31, Westhampton Beach, Late-Noon, Heading 190° - Proposed View - Cumulative - External Leases and NY Bight Leases (853ft) - Maximum Visibility

For on-screen display:
Scale bar to be 4 inches wide
Viewing distance 19.7 inches



Latitude: 40.7701585
Longitude: -72.73278686
Elevation of Viewpoint Position: 9.892
Height of Camera Above Ground: 5.41
Date of Photography: 2/02/2023 at 14:35
Horizontal Field of View: 124°
Vertical Field of View: 55°
Nearest Turbine: 33.9mi (54.5km) (OCS-A 0544)
Furthest Visible Turbine: 42.5mi (68.4km) (OCS-A 0512)
Horizontal Field of View the Projects Occupy: 22.3°

CORRECT VIEWING OF TRUEVIEW™ PHOTO SIMULATIONS



NOTES:
Viewpoint locations have been precision surveyed by
New York City Land Surveyors PC
63 Montgomery Avenue
Staten Island NY 10301

Heights are above mean sea level.
Structure design and placement are subject to final engineering.
No part of this photo simulation shall be altered in any way.

Photo Simulation Created Using
TrueView™ Technology
(Patent No.: US 6,184,906 B2)
Provided by



For on-screen display:
Scale bar to be 4 inches wide
Viewing distance 19.7 inches



For on-screen display:
Scale bar to be 4 inches wide
Viewing distance 19.7 inches



For on-screen display:
Scale bar to be 4 inches wide
Viewing distance 19.7 inches



For on-screen display:
Scale bar to be 4 inches wide
Viewing distance 19.7 inches

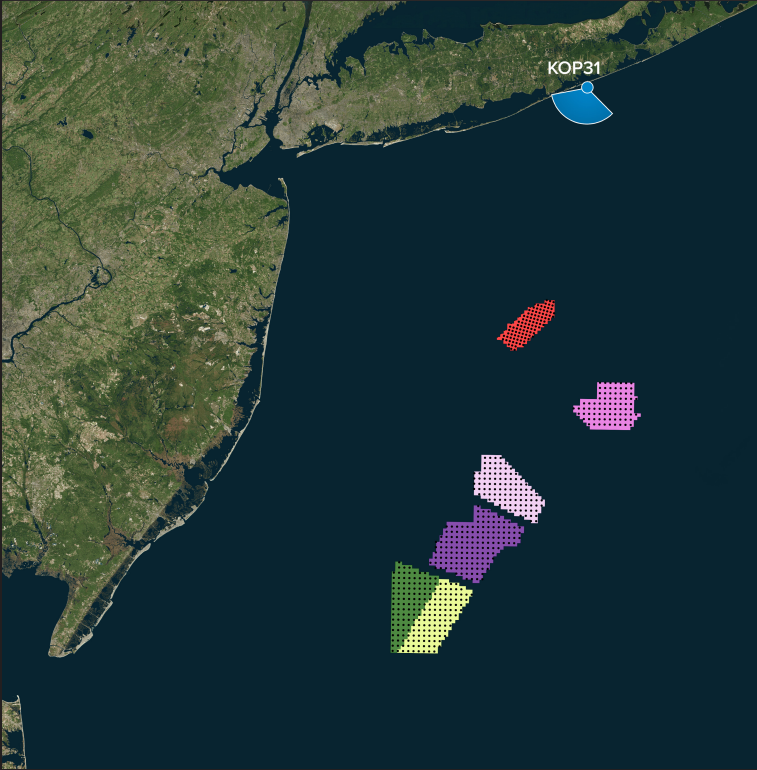


For on-screen display:
Scale bar to be 4 inches wide
Viewing distance 19.7 inches



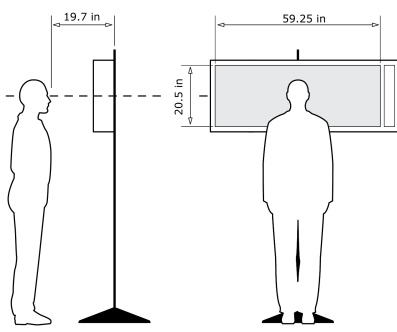
KOP 31, Westhampton Beach, Late-Noon, Heading 190° - **Proposed View - NY Bight Leases (1312ft) - Predicted Visibility**

For on-screen display:
Scale bar to be 4 inches wide
Viewing distance 19.7 inches



Latitude: 40.7701585
Longitude: -72.73278686
Elevation of Viewpoint Position: 9.892
Height of Camera Above Ground: 5.41
Date of Photography: 2/02/2023 at 14:35
Horizontal Field of View: 124°
Vertical Field of View: 55°
Nearest Turbine: 33.9mi (54.5km) (OCS-A 0544)
Furthest Visible Turbine: 47.2mi (76.0km) (OCS-A 0544)
Horizontal Field of View the Projects Occupy: 11.5°

CORRECT VIEWING OF TRUEVIEW™ PHOTO SIMULATIONS

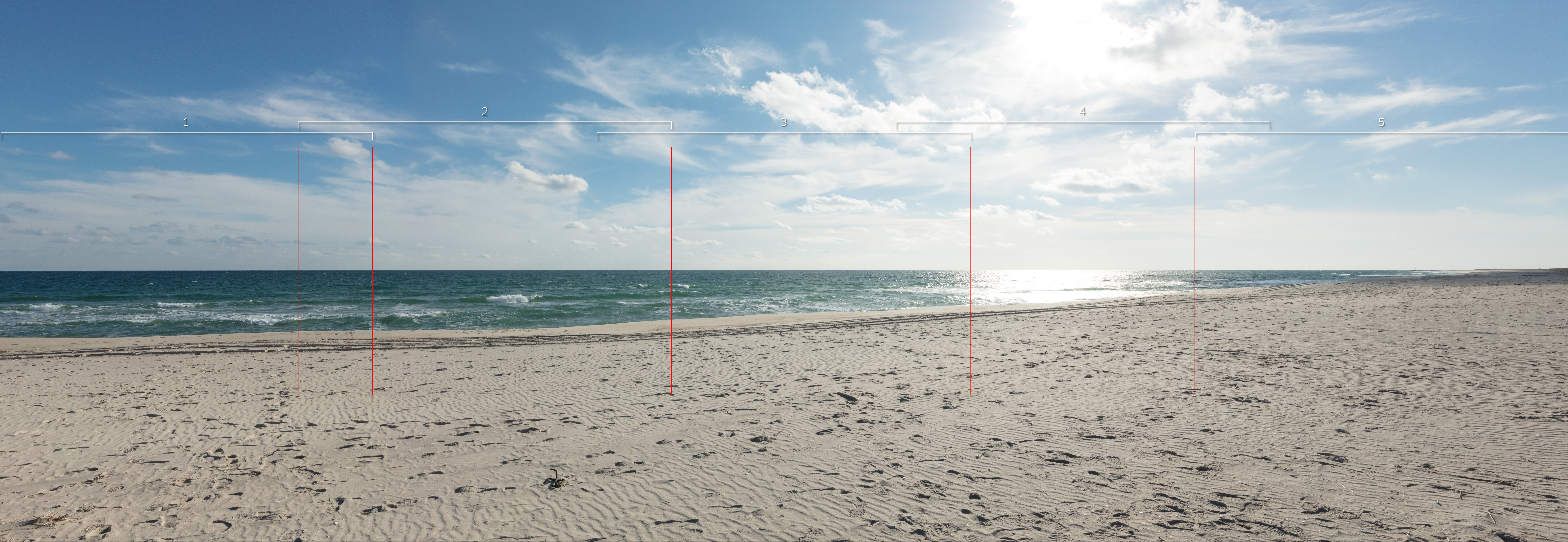


NOTES:

Viewpoint locations have been precision surveyed by
New York City Land Surveyors PC
63 Montgomery Avenue
Staten Island NY 10301

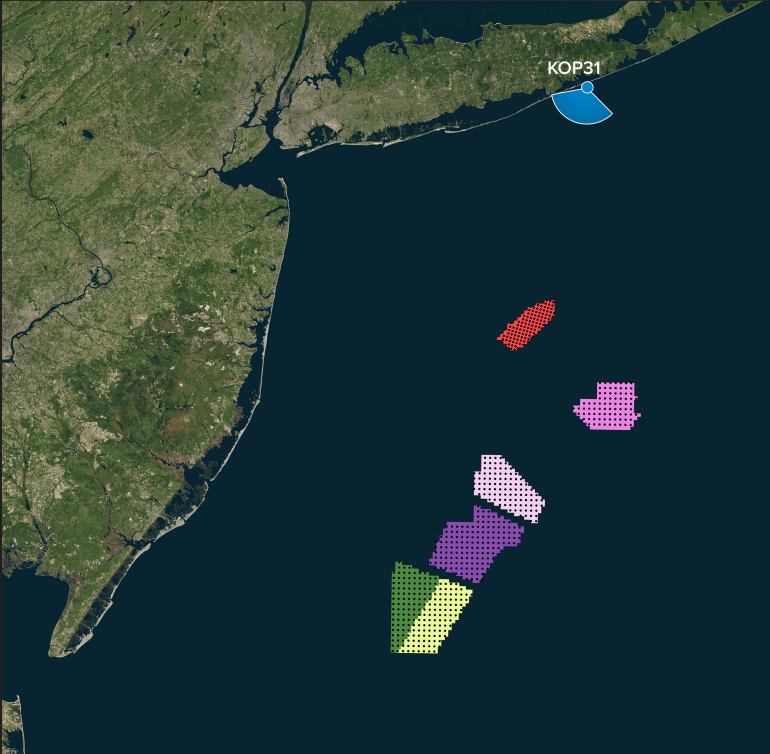
Heights are above mean sea level.
Structure design and placement are subject to final engineering.
No part of this photo simulation shall be altered in any way.

Photo Simulation Created Using
TrueView™ Technology
(Patent No.: US 6,184,906 B2)
Provided by



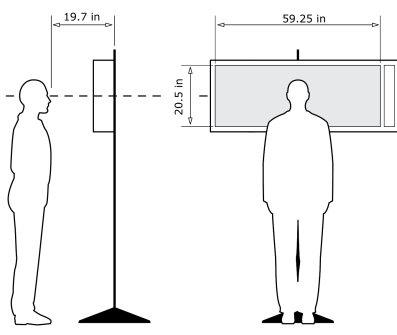
KOP 31, Westhampton Beach, Late-Noon, Heading 190° - Proposed View - NY Bight Leases (1312ft) - Predicted Visibility

For on-screen display:
Scale bar to be 4 inches wide
Viewing distance 19.7 inches



Latitude: 40.7701585
Longitude: -72.73278686
Elevation of Viewpoint Position: 9.892
Height of Camera Above Ground: 5.41
Date of Photography: 2/02/2023 at 14:35
Horizontal Field of View: 124°
Vertical Field of View: 55°
Nearest Turbine: 33.9mi (54.5km) (OCS-A 0544)
Furthest Visible Turbine: 47.2mi (76.0km) (OCS-A 0544)
Horizontal Field of View the Projects Occupy: 11.5°

CORRECT VIEWING OF TRUEVIEW™ PHOTO SIMULATIONS



NOTES:
Viewpoint locations have been precision surveyed by
New York City Land Surveyors PC
63 Montgomery Avenue
Staten Island NY 10301

Heights are above mean sea level.
Structure design and placement are subject to final engineering.
No part of this photo simulation shall be altered in any way.

Photo Simulation Created Using
TrueView™ Technology
(Patent No.: US 6,184,906 B2)
Provided by



For on-screen display:
Scale bar to be 4 inches wide
Viewing distance 19.7 inches



For on-screen display:
Scale bar to be 4 inches wide
Viewing distance 19.7 inches



For on-screen display:
Scale bar to be 4 inches wide
Viewing distance 19.7 inches

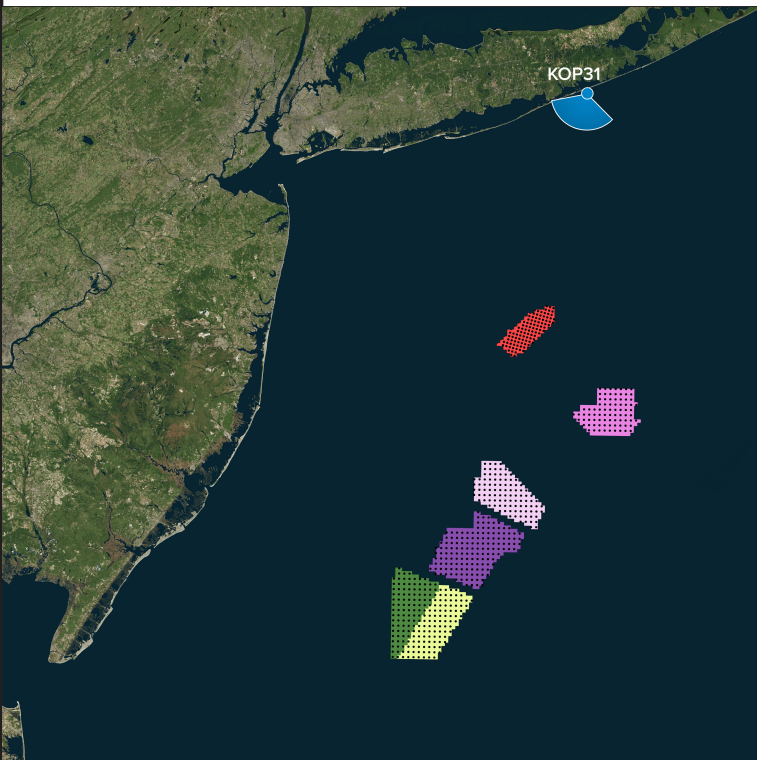


For on-screen display:
Scale bar to be 4 inches wide
Viewing distance 19.7 inches



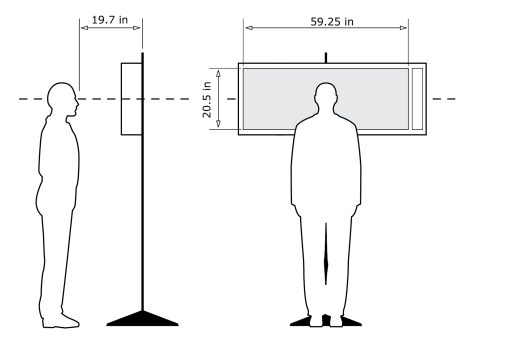
For on-screen display:
Scale bar to be 4 inches wide
Viewing distance 19.7 inches

KOP 31, Westhampton Beach, Late-Noon, Heading 190° - **Proposed View - NY Bight Leases (1312ft) - Maximum Visibility**



Latitude:	40.7701585
Longitude:	-72.73278686
Elevation of Viewpoint Position:	9.892
Height of Camera Above Ground:	5.41
Date of Photography:	2/02/2023 at 14:35
Horizontal Field of View:	124°
Vertical Field of View:	55°
Nearest Turbine:	33.9mi (54.5km) (OCS-A 0544)
Furthest Visible Turbine:	47.2mi (76.0km) (OCS-A 0554)
Horizontal Field of View the Projects Occupy:	11.5°

CORRECT VIEWING OF TRUEVIEW™ PHOTO SIMULATIONS



NOTES:

Viewpoint locations have been precision surveyed by
New York City Land Surveyors PC
 63 Montgomery Avenue
 Staten Island NY 10301

Heights are above mean sea level.

Structure design and placement are subject to final engineering.

No part of this photo simulation shall be altered in any way.

Photo Simulation Created Using
TrueView™ Technology
(Patent No.: US 8,184,906 B2)

Provided by



KOP 31, Westhampton Beach, Late-Noon, Heading 190° - Proposed View - NY Bight Leases (1312ft) - Maximum Visibility

For on-screen display:
Scale bar to be 4 inches wide
Viewing distance 19.7 inches

Argonne

NATIONAL LABORATORY

New York Bight

Westhampton Beach

Camera Heading 190°

Viewpoint Location

Turbines

Latitude: 40.7701585

Longitude: -72.73278686

Elevation of Viewpoint Position: 9.892

Height of Camera Above Ground: 5.41

Date of Photography: 2/02/2023 at 14:35

Horizontal Field of View: 124°

Vertical Field of View: 55°

Nearest Turbine: 33.9mi (54.5km) (OCS-A 0544)

Furthest Visible Turbine: 47.2mi (76.0km) (OCS-A 0544)

Horizontal Field of View the Projects Occupy: 11.5°

CORRECT VIEWING OF TRUEVIEW™ PHOTO SIMULATIONS

NOTES:

Viewpoint locations have been precision surveyed by
New York City Land Surveyors PC
63 Montgomery Avenue
Staten Island NY 10301

Heights are above mean sea level.
Structure design and placement are subject to final engineering.
No part of this photo simulation shall be altered in any way.

Photo Simulation Created Using
TrueView™ Technology
(Patent No.: US 6,184,906 B2)
Provided by

Truescape®

truescape.com



For on-screen display:
Scale bar to be 4 inches wide
Viewing distance 19.7 inches



For on-screen display:
Scale bar to be 4 inches wide
Viewing distance 19.7 inches



For on-screen display:
Scale bar to be 4 inches wide
Viewing distance 19.7 inches



For on-screen display:
Scale bar to be 4 inches wide
Viewing distance 19.7 inches



For on-screen display:
Scale bar to be 4 inches wide
Viewing distance 19.7 inches



KOP 31, Westhampton Beach, Late-Noon, Heading 190° - **Proposed View - Cumulative - External Leases and NY Bight Leases (1312ft) - Predicted Visibility**

For on-screen display:
Scale bar to be 4 inches wide
Viewing distance 19.7 inches

New York Bight

Westhampton Beach
Camera Heading 190°

Viewpoint Location

Turbines

Latitude: 40.7701585
Longitude: -72.73278686
Elevation of Viewpoint Position: 9.892
Height of Camera Above Ground: 5.41
Date of Photography: 2/02/2023 at 14:35
Horizontal Field of View: 124°
Vertical Field of View: 55°
Nearest Turbine: 33.9mi (54.5km) (OCS-A 0544)
Furthest Visible Turbine: 47.2mi (76.0km) (OCS-A 0544)
Horizontal Field of View the Projects Occupy: 22.3°

CORRECT VIEWING OF TRUEVIEW™ PHOTO SIMULATIONS

NOTES:
Viewpoint locations have been precision surveyed by
New York City Land Surveyors PC
63 Montgomery Avenue
Staten Island NY 10301

Heights are above mean sea level.
Structure design and placement are subject to final engineering.
No part of this photo simulation shall be altered in any way.

Photo Simulation Created Using
TrueView™ Technology
(Patent No.: US 6,184,906 B2)
Provided by

Truescape®

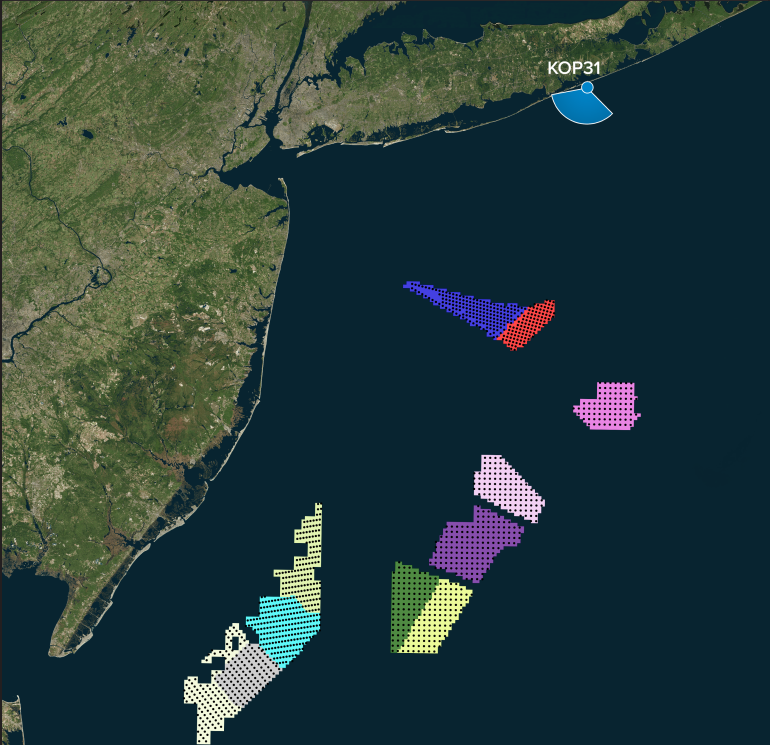
truescape.com

2/02/2023 at 14:35 - KOP 31



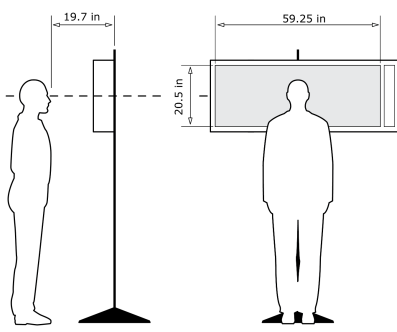
KOP 31, Westhampton Beach, Late-Noon, Heading 190° - Proposed View - Cumulative - External Leases and NY Bight Leases (1312ft) - Predicted Visibility

For on-screen display:
Scale bar to be 4 inches wide
Viewing distance 19.7 inches



Latitude: 40.7701585
Longitude: -72.73278686
Elevation of Viewpoint Position: 9.892
Height of Camera Above Ground: 5.41
Date of Photography: 2/02/2023 at 14:35
Horizontal Field of View: 124°
Vertical Field of View: 55°
Nearest Turbine: 33.9mi (54.5km) (OCS-A 0544)
Furthest Visible Turbine: 47.2mi (76.0km) (OCS-A 0544)
Horizontal Field of View the Projects Occupy: 22.3°

CORRECT VIEWING OF TRUEVIEW™ PHOTO SIMULATIONS



NOTES:
Viewpoint locations have been precision surveyed by
New York City Land Surveyors PC
63 Montgomery Avenue
Staten Island NY 10301

Heights are above mean sea level.
Structure design and placement are subject to final engineering.
No part of this photo simulation shall be altered in any way.

Photo Simulation Created Using
TrueView™ Technology
(Patent No.: US 6,184,906 B2)
Provided by



For on-screen display:
Scale bar to be 4 inches wide
Viewing distance 19.7 inches



For on-screen display:
Scale bar to be 4 inches wide
Viewing distance 19.7 inches



For on-screen display:
Scale bar to be 4 inches wide
Viewing distance 19.7 inches



For on-screen display:
Scale bar to be 4 inches wide
Viewing distance 19.7 inches

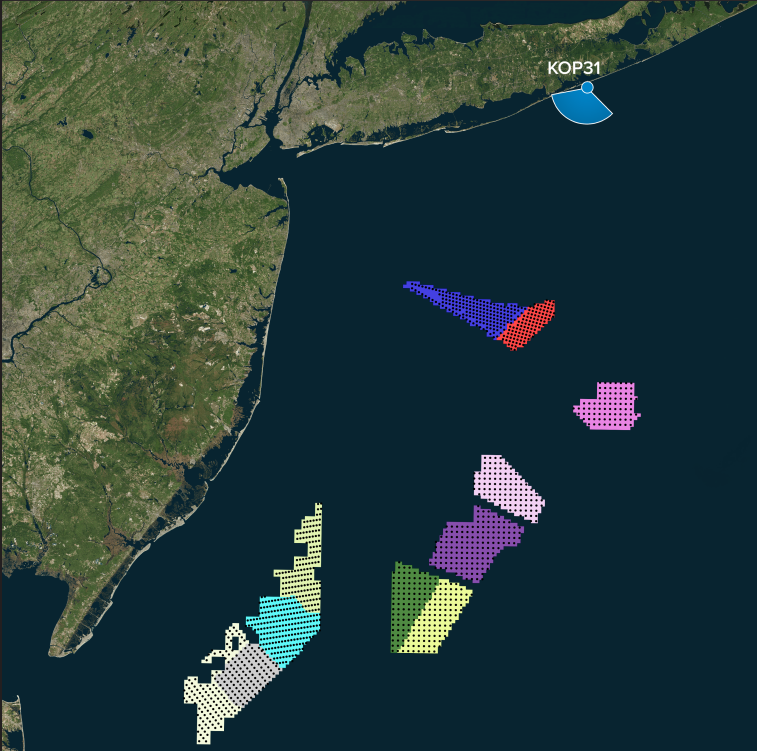


For on-screen display:
Scale bar to be 4 inches wide
Viewing distance 19.7 inches



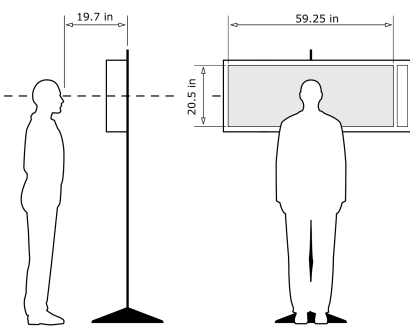
KOP 31, Westhampton Beach, Late-Noon, Heading 190° - **Proposed View - Cumulative - External Leases and NY Bight Leases (1312ft) - Maximum Visibility**

For on-screen display:
Scale bar to be 4 inches wide
Viewing distance 19.7 inches



Latitude: 40.7701585
Longitude: -72.73278686
Elevation of Viewpoint Position: 9.892
Height of Camera Above Ground: 5.41
Date of Photography: 2/02/2023 at 14:35
Horizontal Field of View: 124°
Vertical Field of View: 55°
Nearest Turbine: 33.9mi (54.5km) (OCS-A 0544)
Furthest Visible Turbine: 47.2mi (76.0km) (OCS-A 0544)
Horizontal Field of View the Projects Occupy: 22.3°

CORRECT VIEWING OF TRUEVIEW™ PHOTO SIMULATIONS



NOTES:

Viewpoint locations have been precision surveyed by
New York City Land Surveyors PC
63 Montgomery Avenue
Staten Island NY 10301

Heights are above mean sea level.
Structure design and placement are subject to final engineering.
No part of this photo simulation shall be altered in any way.

Photo Simulation Created Using
TrueView™ Technology
(Patent No.: US 6,184,906 B2)
Provided by





For on-screen display:
Scale bar to be 4 inches wide
Viewing distance 19.7 inches



For on-screen display:
Scale bar to be 4 inches wide
Viewing distance 19.7 inches



For on-screen display:
Scale bar to be 4 inches wide
Viewing distance 19.7 inches



For on-screen display:
Scale bar to be 4 inches wide
Viewing distance 19.7 inches

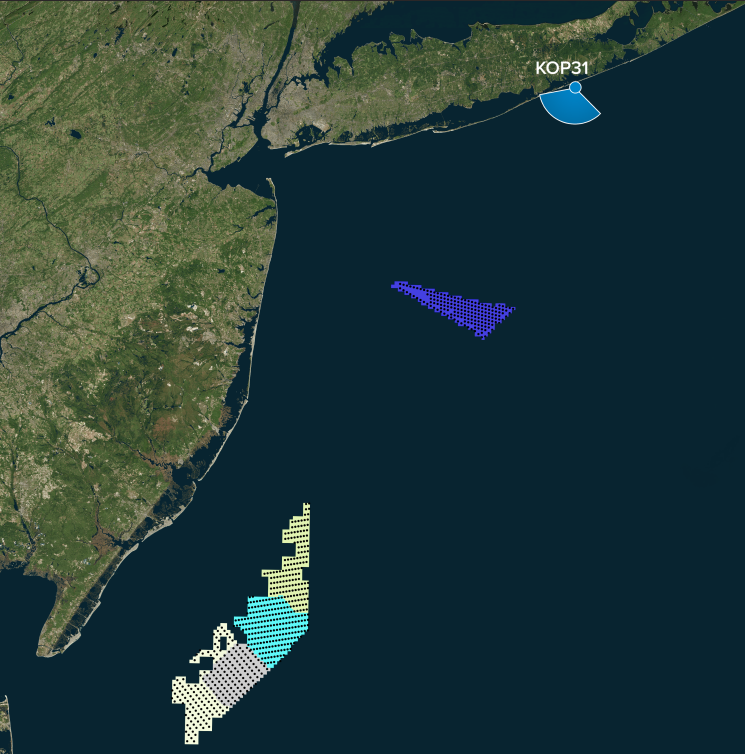


For on-screen display:
Scale bar to be 4 inches wide
Viewing distance 19.7 inches



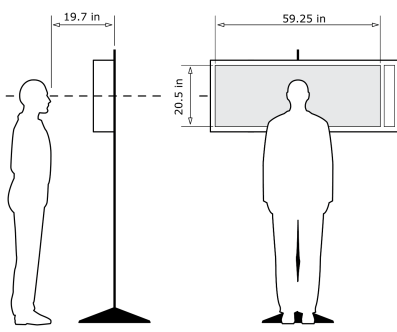
KOP 31, Westhampton Beach, Late-Noon, Heading 190° - **Proposed View - External Leases - Predicted Visibility**

For on-screen display:
Scale bar to be 4 inches wide
Viewing distance 19.7 inches



Latitude: 40.7701585
Longitude: -72.73278686
Elevation of Viewpoint Position: 9.892
Height of Camera Above Ground: 5.41
Date of Photography: 2/02/2023 at 14:35
Horizontal Field of View: 124°
Vertical Field of View: 55°

CORRECT VIEWING OF TRUEVIEW™ PHOTO SIMULATIONS



NOTES:

Viewpoint locations have been precision surveyed by
New York City Land Surveyors PC
63 Montgomery Avenue
Staten Island NY 10301

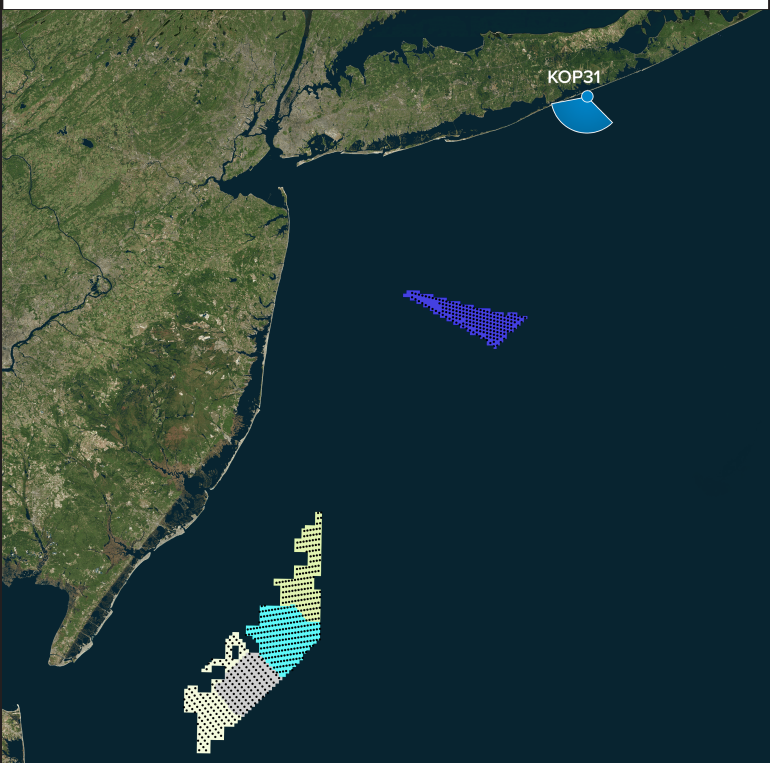
Heights are above mean sea level.
Structure design and placement are subject to final engineering.
No part of this photo simulation shall be altered in any way.

Photo Simulation Created Using
TrueView™ Technology
(Patent No.: US 6,184,906 B2)
Provided by



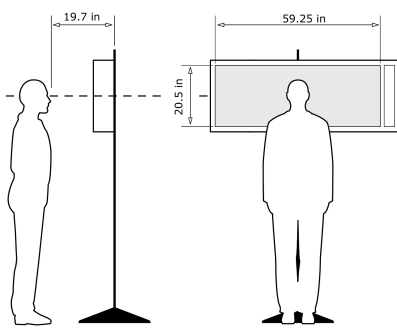
KOP 31, Westhampton Beach, Late-Noon, Heading 190° - **Proposed View - External Leases - Predicted Visibility**

For on-screen display:
Scale bar to be 4 inches wide
Viewing distance 19.7 inches



Latitude: 40.7701585
Longitude: -72.73278686
Elevation of Viewpoint Position: 9.892
Height of Camera Above Ground: 5.41
Date of Photography: 2/02/2023 at 14:35
Horizontal Field of View: 124°
Vertical Field of View: 55°

CORRECT VIEWING OF TRUEVIEW™ PHOTO SIMULATIONS



NOTES:
Viewpoint locations have been precision surveyed by
New York City Land Surveyors PC
63 Montgomery Avenue
Staten Island NY 10301

Heights are above mean sea level.
Structure design and placement are subject to final engineering.
No part of this photo simulation shall be altered in any way.

Photo Simulation Created Using
TrueView™ Technology
(Patent No.: US 6,184,906 B2)
Provided by



For on-screen display:
Scale bar to be 4 inches wide
Viewing distance 19.7 inches



For on-screen display:
Scale bar to be 4 inches wide
Viewing distance 19.7 inches



For on-screen display:
Scale bar to be 4 inches wide
Viewing distance 19.7 inches



For on-screen display:
Scale bar to be 4 inches wide
Viewing distance 19.7 inches

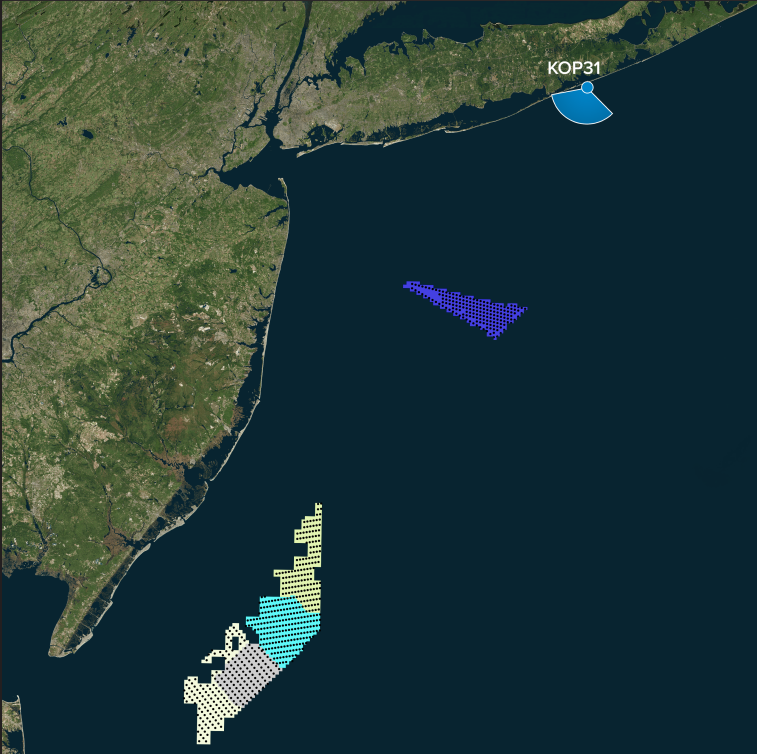


For on-screen display:
Scale bar to be 4 inches wide
Viewing distance 19.7 inches



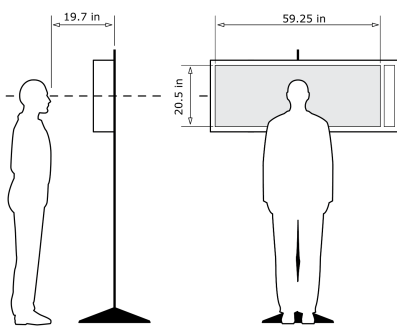
KOP 31, Westhampton Beach, Late-Noon, Heading 190° - **Proposed View - External Leases - Maximum Visibility**

For on-screen display:
Scale bar to be 4 inches wide
Viewing distance 19.7 inches



Latitude: 40.7701585
Longitude: -72.73278686
Elevation of Viewpoint Position: 9.892
Height of Camera Above Ground: 5.41
Date of Photography: 2/02/2023 at 14:35
Horizontal Field of View: 124°
Vertical Field of View: 55°

CORRECT VIEWING OF TRUEVIEW™ PHOTO SIMULATIONS



NOTES:

Viewpoint locations have been precision surveyed by
New York City Land Surveyors PC
63 Montgomery Avenue
Staten Island NY 10301

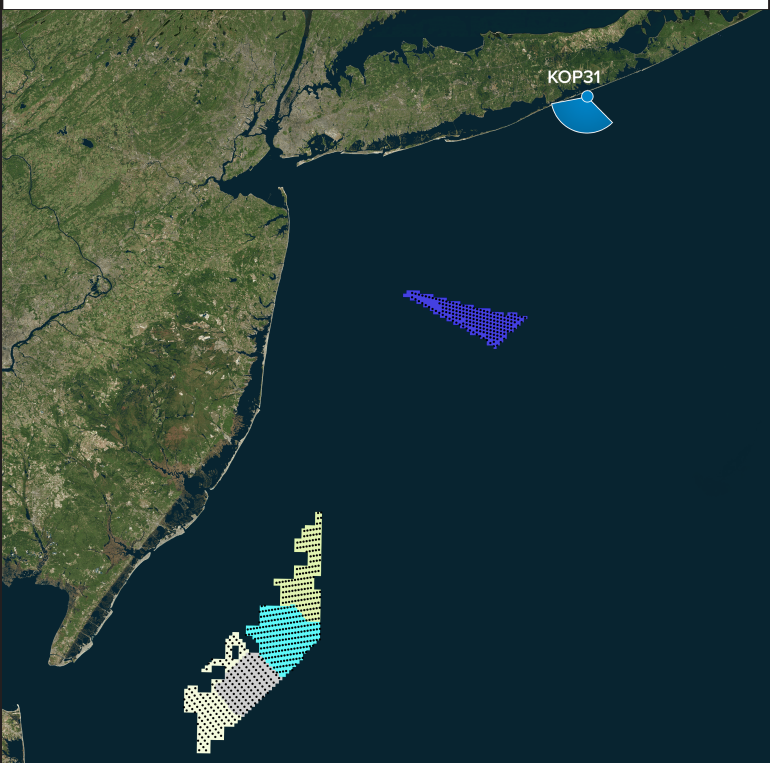
Heights are above mean sea level.
Structure design and placement are subject to final engineering.
No part of this photo simulation shall be altered in any way.

Photo Simulation Created Using
TrueView™ Technology
(Patent No.: US 6,184,906 B2)
Provided by



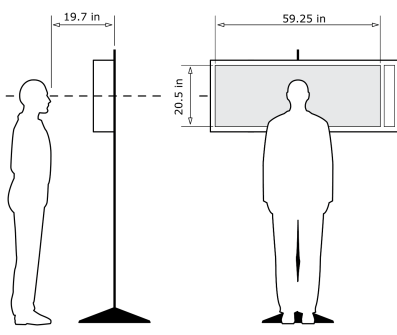
KOP 31, Westhampton Beach, Late-Noon, Heading 190° - **Proposed View - External Leases - Maximum Visibility**

For on-screen display:
Scale bar to be 4 inches wide
Viewing distance 19.7 inches



Latitude: 40.7701585
Longitude: -72.73278686
Elevation of Viewpoint Position: 9.892
Height of Camera Above Ground: 5.41
Date of Photography: 2/02/2023 at 14:35
Horizontal Field of View: 124°
Vertical Field of View: 55°

CORRECT VIEWING OF TRUEVIEW™ PHOTO SIMULATIONS



NOTES:
Viewpoint locations have been precision surveyed by
New York City Land Surveyors PC
63 Montgomery Avenue
Staten Island NY 10301

Heights are above mean sea level.
Structure design and placement are subject to final engineering.
No part of this photo simulation shall be altered in any way.

Photo Simulation Created Using
TrueView™ Technology
(Patent No.: US 6,184,906 B2)
Provided by



For on-screen display:
Scale bar to be 4 inches wide
Viewing distance 19.7 inches



For on-screen display:
Scale bar to be 4 inches wide
Viewing distance 19.7 inches



For on-screen display:
Scale bar to be 4 inches wide
Viewing distance 19.7 inches



For on-screen display:
Scale bar to be 4 inches wide
Viewing distance 19.7 inches



For on-screen display:
Scale bar to be 4 inches wide
Viewing distance 19.7 inches