

Base Photographic Documentation

Date (MM/DD/YYYY):	1/24/2023
Time (24hr):	12:08
GPS Longitude:	-74.46534286
GPS Latitude:	39.34256319
Viewpoint Elevation (ft):	13.214
Camera Height (ft):	5.41
Camera Heading (°):	124
Camera Direction:	SE

Camera Information

Camera Make & Model:	Canon EOS 5DS R
Camera Sensor Size:	36mm x 24mm
Lens Make & Model:	Sigma F1.4 DG HSM A014
Lens Focal Length:	20mm
Field of View:	65.47° (H) / 46.397° (V)

Sun And Weather Information

Sun Azimuth:	179.74
Sun Elevation:	31.53
Lighting Angle (On Turbines):	Right Lit
Weather Conditions:	Fair
Maximum Visibility (NM):	24.75
Temperature (°F):	42
Temperature (°C):	5.56
Humidity (%):	47

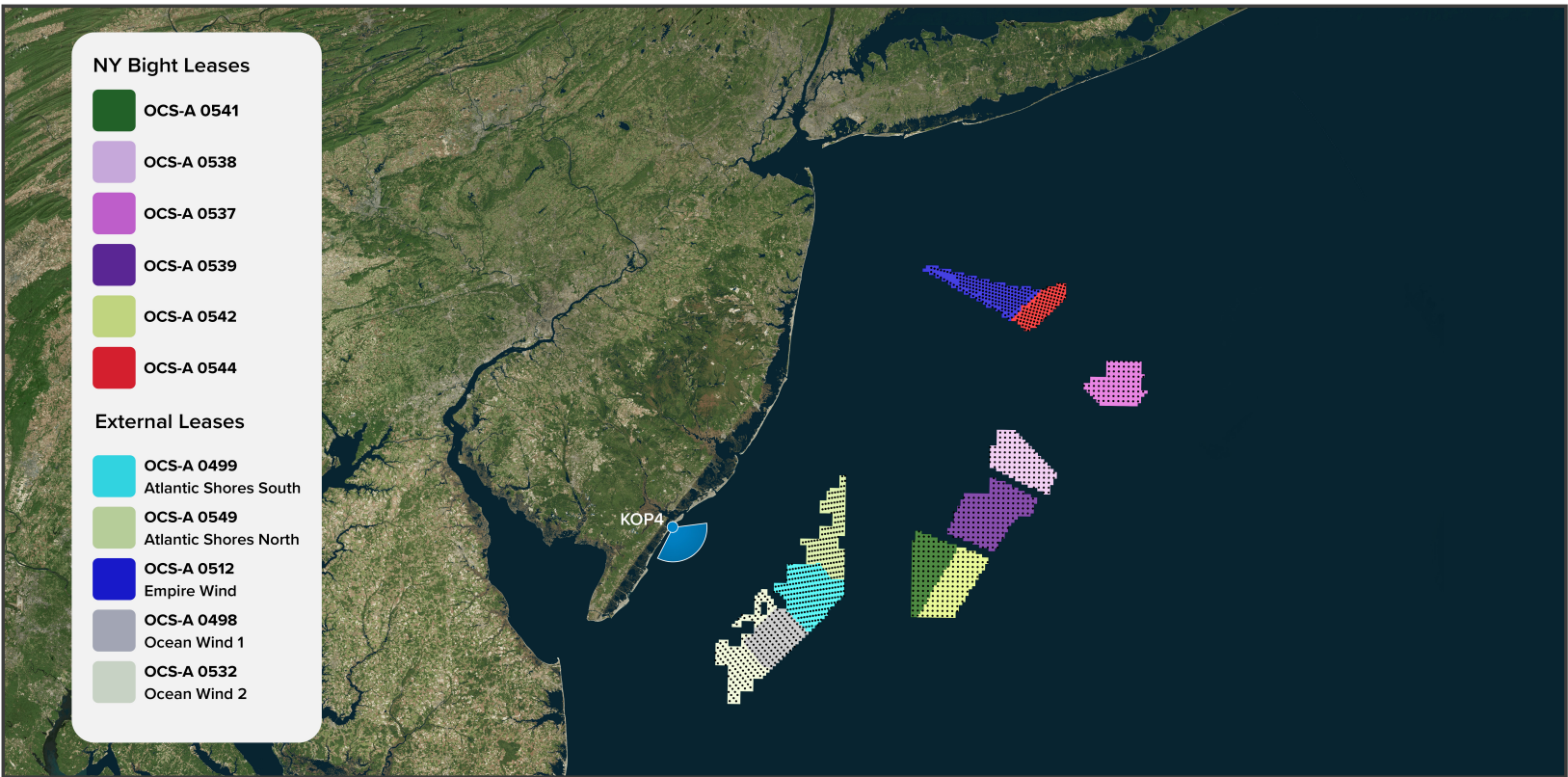
Viewing Instructions

11 x 17 inch Printed Display:	Distance is 19.7 inches (500mm)
On-Screen Display:	Distance is 19.7 inches (500mm)

Image Preview



Context Map



● Key Observation Point (KOP) ● Turbines

NY Bight Turbine Information - 1312ft (399.9m)

Lease Area	Distance to Nearest Turbine in Miles (km)	Turbines Visible		
		Blade Tip	Hub	Mid Tower
Total	-	223	0	0
OCS-A 0544	89.80 (144.51)	0	0	0
OCS-A 0537	94.48 (152.05)	0	0	0
OCS-A 0538	67.37 (108.42)	0	0	0
OCS-A 0539	53.52 (86.14)	0	0	0
OCS-A 0541	43.80 (70.49)	193	0	0
OCS-A 0542	46.66 (75.10)	30	0	0

Blade tip counts are a summation of only blade tips visible, only hubs visible, and mid-towers visible. Hub counts are a summation of only hubs visible and mid towers visible.

Turbine Visibility	Turbine Visibility & Percentage
Amount of Nearest Turbine Hidden in ft (m)	989.7 (301.7)
Percent of Nearest Turbine Hidden (%)	75%
Amount of Nearest Turbine Visible in ft (m)	322.3 (98.2)
Percent of Nearest Turbine Visible (%)	25%

NY Bight Turbine Specifications

Turbine Components	Measurements ft (m)
Rotor Diameter in ft (m)	1212 (369.4)
Total Height to Tip of Blade in ft (m)	1312 (399.9)
Hub Height in ft (m)	706 (215.2)
Support Structure Height in ft (m)	25 (7.6)
Service Platform in ft (m)	100 (30.5) × 200 (61.0) Steel Platform above MWS
Total Number of Turbines	1481

NY Bight Turbine Information - 853ft (260m)
No Simulation

Lease Area	Distance to Nearest Turbine in Miles (km)	Turbines Visible		
		Blade Tip	Hub	Mid Tower
Total	-	0	0	0
OCS-A 0544	89.80 (144.51)	0	0	0
OCS-A 0537	94.48 (152.05)	0	0	0
OCS-A 0538	67.37 (108.42)	0	0	0
OCS-A 0539	53.52 (86.14)	0	0	0
OCS-A 0541	43.80 (70.49)	0	0	0
OCS-A 0542	46.66 (75.10)	0	0	0

Blade tip counts are a summation of only blade tips visible, only hubs visible, and mid-towers visible. Hub counts are a summation of only hubs visible and mid towers visible.

Turbine Visibility	Turbine Visibility & Percentage
Amount of Nearest Turbine Hidden in ft (m)	853 (260)
Percent of Nearest Turbine Hidden (%)	100%
Amount of Nearest Turbine Visible in ft (m)	0.0 (0.0)
Percent of Nearest Turbine Visible (%)	0.0%

NY Bight Turbine Specifications

Turbine Components	Measurements ft (m)
Rotor Diameter in ft (m)	722 (220.1)
Total Height to Tip of Blade in ft (m)	853 (260)
Hub Height in ft (m)	361 (110)
Support Structure Height in ft (m)	25 (7.6)
Service Platform in ft (m)	100 (30.5) × 200 (61.0) Steel Platform above MWS
Total Number of Turbines	1481

External Turbine Information

Lease Area	Distance to Nearest Turbine in Miles (km)	Turbines Visible		
		Blade Tip	Hub	Mid Tower
Total	-	566	562	N/A
OCS-A 0499	12.5 (20.1)	200	200	N/A
OCS-A 0549	19.3 (31.0)	157	153	N/A
OCS-A 0512	N/A	0	0	N/A
OCS-A 0498	15.6 (25.1)	98	98	N/A
OCS-A 0532	9.6 (15.5)	111	111	N/A

Cumulative Turbine Visibility
(Total WTG Count for NY Bight + External Leases)

1312ft (399.9m)			853ft (260m) - No Simulation		
Blade Tip	Hub	Mid Tower	Blade Tip	Hub	Mid Tower
789	562	0	566	562	0

The cumulative mid tower counts for both turbine heights are conservative values due to having no mid tower data for the external leases.

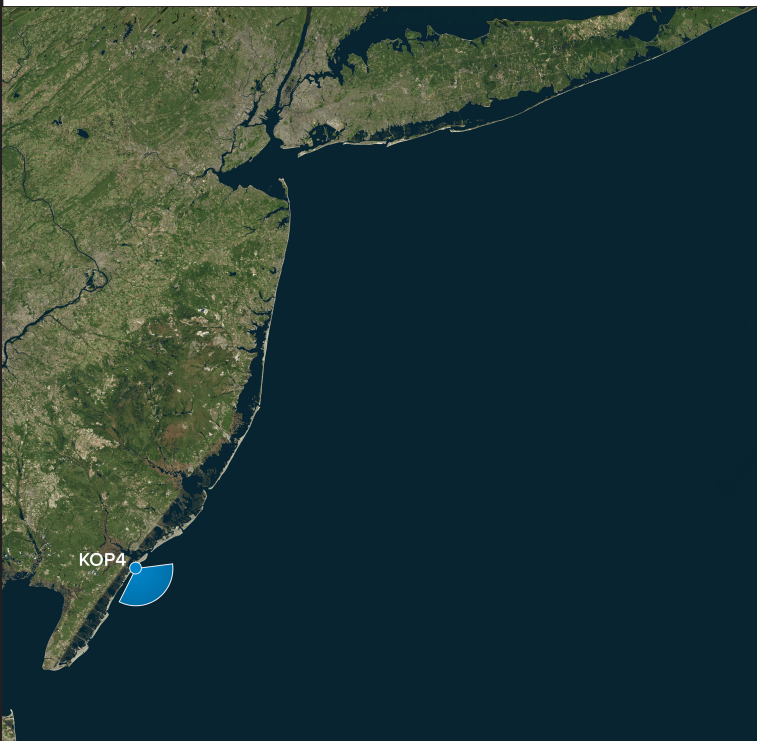
External Turbine Specifications

Lease Area	Rotor Diameter in ft (m)	Total Height to Tip of Blade in ft (m)	Hub Height in ft (m)	Support Structure Height in ft (m)
OCS-A 0499	918.6 (279.9)	1049 (319.7)	577 (176)	25 (7.6)
OCS-A 0549	918.6 (279.9)	1049 (319.7)	577 (176)	25 (7.6)
OCS-A 0512	853 (259.9)	951 (290)	525 (160)	25 (7.6)
OCS-A 0498	788 (240.1)	906 (276)	512 (156)	25 (7.6)
OCS-A 0532	788 (240.1)	906 (276)	512 (156)	25 (7.6)



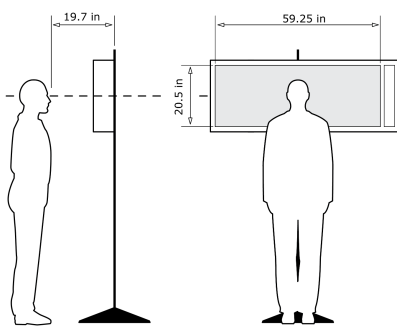
KOP 4, Stafford B (Beach Entrance), Noon, Heading 124° - Existing View

For on-screen display:
Scale bar to be 4 inches wide
Viewing distance 19.7 inches



Latitude: 39.34256319
Longitude: -74.46534286
Elevation of Viewpoint Position: 13.214
Height of Camera Above Ground: 5.41
Date of Photography: 1/24/2023 at 12:08
Horizontal Field of View: 124°
Vertical Field of View: 55°

CORRECT VIEWING OF TRUEVIEW™ PHOTO SIMULATIONS



NOTES:

Viewpoint locations have been precision surveyed by
New York City Land Surveyors PC
63 Montgomery Avenue
Staten Island NY 10301

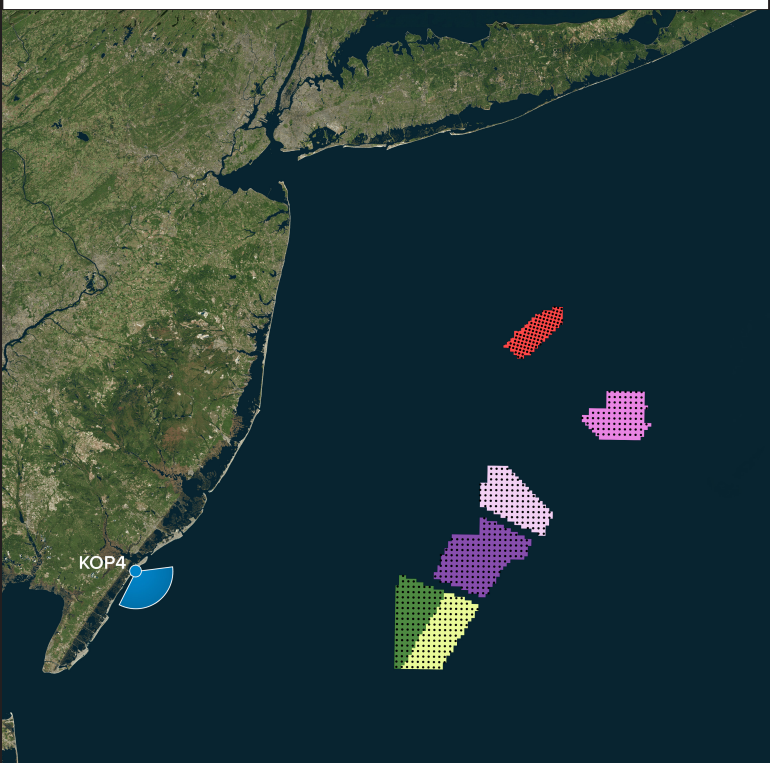
Heights are above mean sea level.
Structure design and placement are subject to final engineering.
No part of this photo simulation shall be altered in any way.

Photo Simulation Created Using
TrueView™ Technology
(Patent No.: US 6,184,906 B2)
Provided by



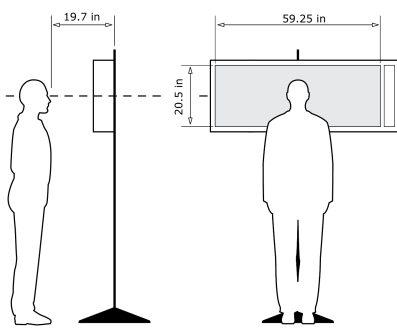
KOP 4, Stafford B (Beach Entrance), Noon, Heading 124° - **Proposed View - NY Bight Leases (1312ft) - Predicted Visibility**

For on-screen display:
Scale bar to be 4 inches wide
Viewing distance 19.7 inches



Latitude: 39.34256319
Longitude: -74.46534286
Elevation of Viewpoint Position: 13.214
Height of Camera Above Ground: 5.41
Date of Photography: 1/24/2023 at 12:08
Horizontal Field of View: 124°
Vertical Field of View: 55°
Nearest Turbine: 43.8mi (70.5km) (OCS-A 0541)
Furthest Visible Turbine: 49.6mi (79.8km) (OCS-A 0541)
Horizontal Field of View the Projects Occupy: 24.4°

CORRECT VIEWING OF TRUEVIEW™ PHOTO SIMULATIONS



NOTES:

Viewpoint locations have been precision surveyed by
New York City Land Surveyors PC
63 Montgomery Avenue
Staten Island NY 10301


Heights are above mean sea level.
Structure design and placement are subject to final engineering.
No part of this photo simulation shall be altered in any way.

Photo Simulation Created Using
TrueView™ Technology
(Patent No.: US 6,184,906 B2)
Provided by



KOP 4, Stafford B (Beach Entrance), Noon, Heading 124° - Proposed View - NY Bight Leases (1312ft) - Predicted Visibility

For on-screen display:
Scale bar to be 4 inches wide
Viewing distance 19.7 inches

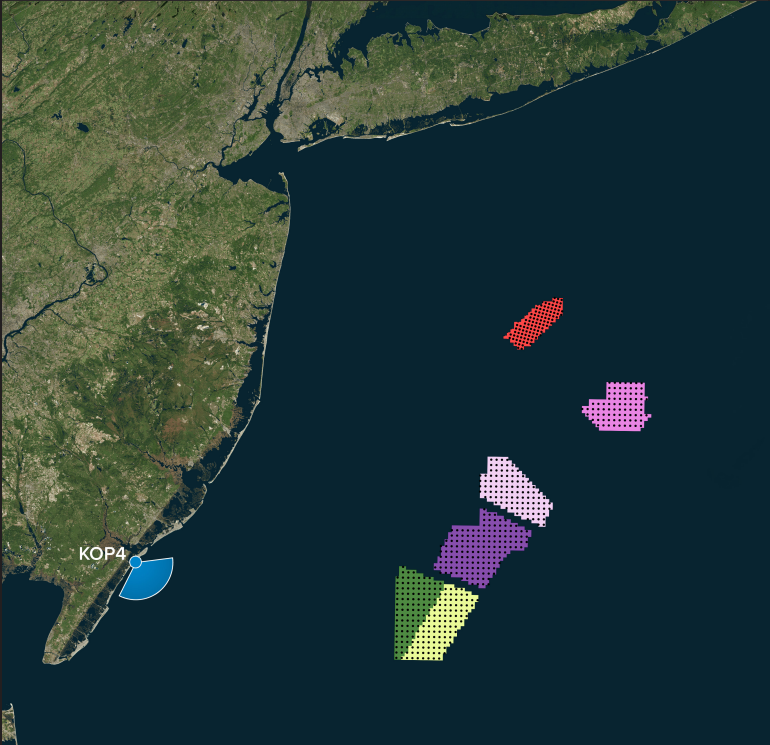


New York Bight

Stafford B (Beach Entrance)
Camera Heading 124°

● Viewpoint Location

● Turbines



Latitude: 39.34256319

Longitude: -74.46534286

Elevation of Viewpoint Position: 13.214

Height of Camera Above Ground: 5.41

Date of Photography: 1/24/2023 at 12:08

Horizontal Field of View: 124°

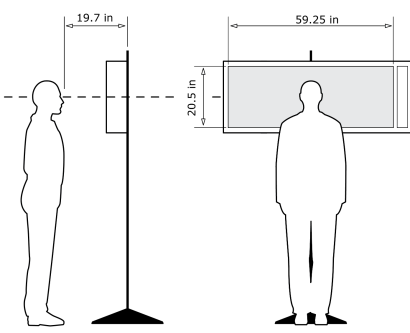
Vertical Field of View: 55°

Nearest Turbine: 43.8mi (70.5km) (OCS-A 0541)

Furthest Visible Turbine: 49.6mi (79.8km) (OCS-A 0541)

Horizontal Field of View the Projects Occupy: 24.4°

CORRECT VIEWING OF TRUEVIEW™ PHOTO SIMULATIONS



NOTES:

Viewpoint locations have been precision surveyed by
New York City Land Surveyors PC
63 Montgomery Avenue
Staten Island NY 10301

Heights are above mean sea level.
Structure design and placement are subject to final engineering.
No part of this photo simulation shall be altered in any way.

Photo Simulation Created Using
TrueView™ Technology
(Patent No.: US 6,184,906 B2)
Provided by

Truescape®
truescape.com



For on-screen display:
Scale bar to be 4 inches wide
Viewing distance 19.7 inches



For on-screen display:
Scale bar to be 4 inches wide
Viewing distance 19.7 inches



For on-screen display:
Scale bar to be 4 inches wide
Viewing distance 19.7 inches



For on-screen display:
Scale bar to be 4 inches wide
Viewing distance 19.7 inches

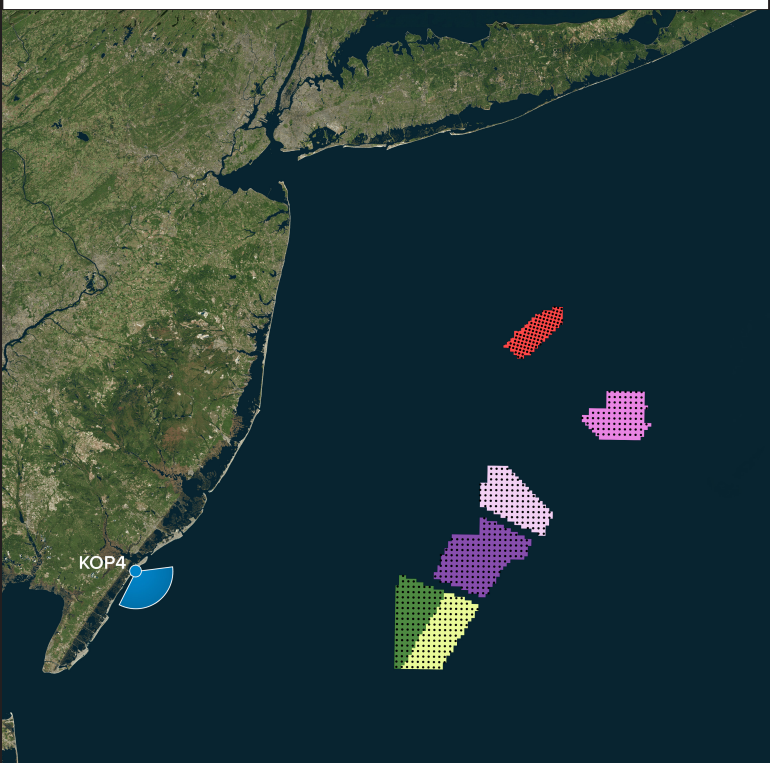


For on-screen display:
Scale bar to be 4 inches wide
Viewing distance 19.7 inches



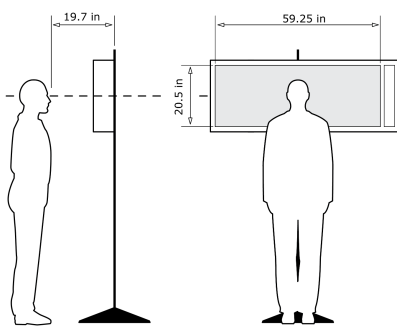
KOP 4, Stafford B (Beach Entrance), Noon, Heading 124° - **Proposed View - NY Bight Leases (1312ft) - Maximum Visibility**

For on-screen display:
Scale bar to be 4 inches wide
Viewing distance 19.7 inches



Latitude: 39.34256319
Longitude: -74.46534286
Elevation of Viewpoint Position: 13.214
Height of Camera Above Ground: 5.41
Date of Photography: 1/24/2023 at 12:08
Horizontal Field of View: 124°
Vertical Field of View: 55°
Nearest Turbine: 43.8mi (70.5km) (OCS-A 0541)
Furthest Visible Turbine: 49.6mi (79.8km) (OCS-A 0541)
Horizontal Field of View the Projects Occupy: 24.4°

CORRECT VIEWING OF TRUEVIEW™ PHOTO SIMULATIONS



NOTES:

Viewpoint locations have been precision surveyed by
New York City Land Surveyors PC
63 Montgomery Avenue
Staten Island NY 10301

Heights are above mean sea level.
Structure design and placement are subject to final engineering.
No part of this photo simulation shall be altered in any way.

Photo Simulation Created Using
TrueView™ Technology
(Patent No.: US 6,184,906 B2)
Provided by



KOP 4, Stafford B (Beach Entrance), Noon, Heading 124° - Proposed View - NY Bight Leases (1312ft) - Maximum Visibility

For on-screen display:
Scale bar to be 4 inches wide
Viewing distance 19.7 inches

New York Bight

Stafford B (Beach Entrance)
Camera Heading 124°

● Viewpoint Location

● Turbines

Latitude:

39.34256319

Elevation of Viewpoint Position:

13.214

Height of Camera Above Ground:

5.41

Date of Photography:

1/24/2023 at 12:08

Horizontal Field of View:

124°

Vertical Field of View:

55°

Nearest Turbine:

43.8mi (70.5km) (OCS-A 0541)

Furthest Visible Turbine:

49.6mi (79.8km) (OCS-A 0541)

Horizontal Field of View the Projects Occupy:

24.4°

CORRECT VIEWING OF TRUEVIEW™ PHOTO SIMULATIONS

NOTES:

Viewpoint locations have been precision surveyed by
New York City Land Surveyors PC
63 Montgomery Avenue
Staten Island NY 10301

Heights are above mean sea level.
Structure design and placement are subject to final engineering.
No part of this photo simulation shall be altered in any way.

Photo Simulation Created Using
TrueView™ Technology
(Patent No.: US 6,184,906 B2)
Provided by

truescape.com

1/24/2023 at 12:08 - KOP 4



For on-screen display:
Scale bar to be 4 inches wide
Viewing distance 19.7 inches



For on-screen display:
Scale bar to be 4 inches wide
Viewing distance 19.7 inches



For on-screen display:
Scale bar to be 4 inches wide
Viewing distance 19.7 inches



For on-screen display:
Scale bar to be 4 inches wide
Viewing distance 19.7 inches

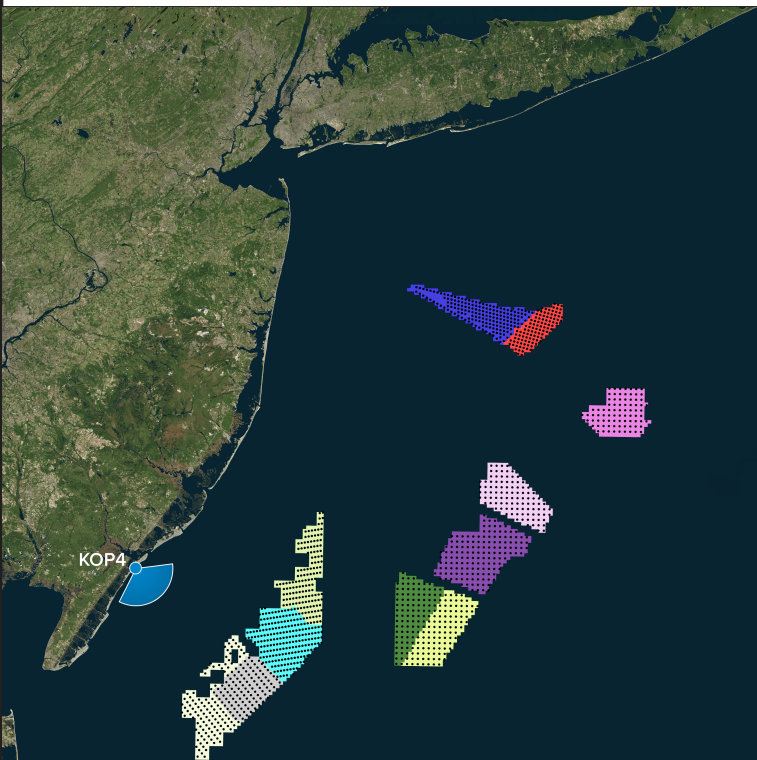


For on-screen display:
Scale bar to be 4 inches wide
Viewing distance 19.7 inches



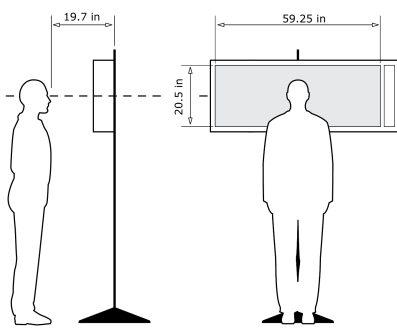
KOP 4, Stafford B (Beach Entrance), Noon, Heading 124° - **Proposed View - Cumulative - External Leases and NY Bight Leases (1312ft) - Predicted Visibility**

For on-screen display:
Scale bar to be 4 inches wide
Viewing distance 19.7 inches



Latitude: 39.34256319
Longitude: -74.46534286
Elevation of Viewpoint Position: 13.214
Height of Camera Above Ground: 5.41
Date of Photography: 1/24/2023 at 12:08
Horizontal Field of View: 124°
Vertical Field of View: 55°
Nearest Turbine: 9.6mi (15.5km) (OCS-A 0532)
Furthest Visible Turbine: 49.6mi (79.8km) (OCS-A 0541)
Horizontal Field of View the Projects Occupy: 135.6°

CORRECT VIEWING OF TRUEVIEW™ PHOTO SIMULATIONS



NOTES:

Viewpoint locations have been precision surveyed by
New York City Land Surveyors PC
63 Montgomery Avenue
Staten Island NY 10301

Heights are above mean sea level.
Structure design and placement are subject to final engineering.
No part of this photo simulation shall be altered in any way.

Photo Simulation Created Using
TrueView™ Technology
(Patent No.: US 6,184,906 B2)
Provided by



KOP 4, Stafford B (Beach Entrance), Noon, Heading 124° - Proposed View - Cumulative - External Leases and NY Bight Leases (1312ft) - Predicted Visibility

For on-screen display:
Scale bar to be 4 inches wide
Viewing distance 19.7 inches

New York Bight

Stafford B (Beach Entrance)
Camera Heading 124°

Viewpoint Location

Turbines

Latitude:
Longitude:
Elevation of Viewpoint Position:
Height of Camera Above Ground:
Date of Photography:
Horizontal Field of View:
Vertical Field of View:
Nearest Turbine:
Furthest Visible Turbine:
Horizontal Field of View the Projects Occupy:

39.34256319
-74.46534286
13.214
5.41
1/24/2023 at 12:08
124°
55°
9.6mi (15.5km) (OCS-A 0532)
49.6mi (79.8km) (OCS-A 0541)
135.6°

CORRECT VIEWING OF TRUEVIEW™ PHOTO SIMULATIONS

NOTES:
Viewpoint locations have been precision surveyed by
New York City Land Surveyors PC
63 Montgomery Avenue
Staten Island NY 10301

Heights are above mean sea level.
Structure design and placement are subject to final engineering.
No part of this photo simulation shall be altered in any way.

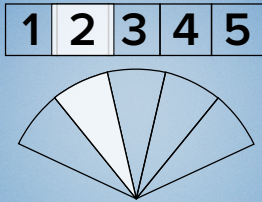
Photo Simulation Created Using
TrueView™ Technology
(Patent No.: US 6,184,906 B2)
Provided by

Truescape®

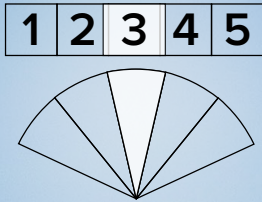
truescape.com



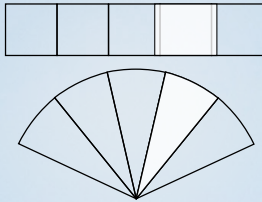
For on-screen display:
Scale bar to be 4 inches wide
Viewing distance 19.7 inches



For on-screen display:
Scale bar to be 4 inches wide
Viewing distance 19.7 inches



For on-screen display:
Scale bar to be 4 inches wide
Viewing distance 19.7 inches



For on-screen display:
Scale bar to be 4 inches wide
Viewing distance 19.7 inches

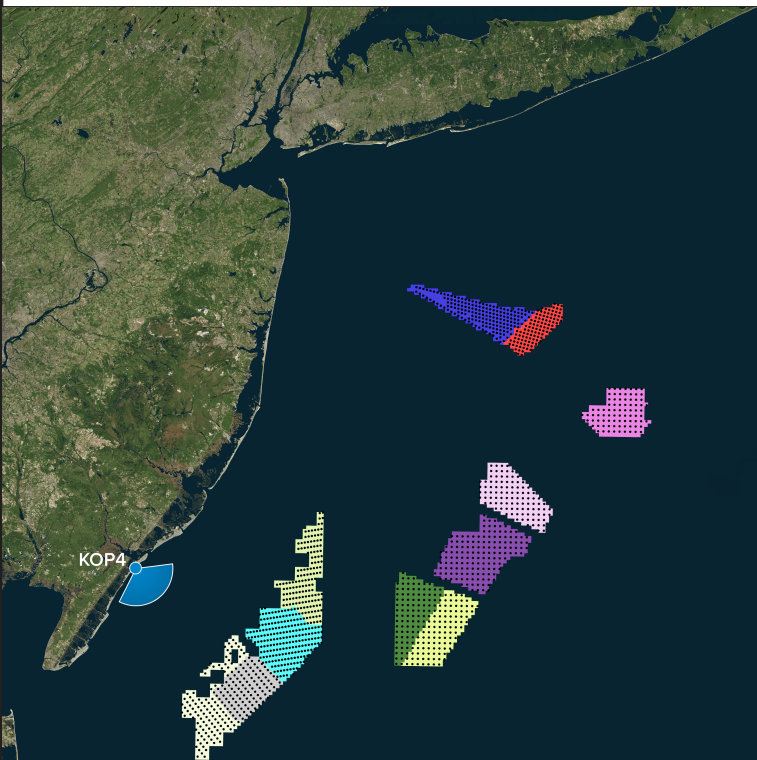


For on-screen display:
Scale bar to be 4 inches wide
Viewing distance 19.7 inches



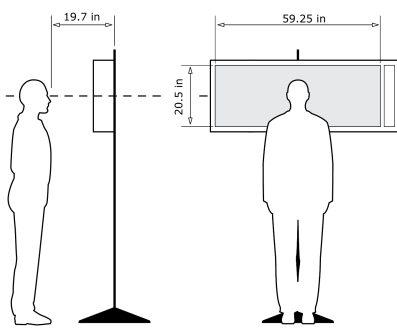
KOP 4, Stafford B (Beach Entrance), Noon, Heading 124° - Proposed View - Cumulative - External Leases and NY Bight Leases (1312ft) - Maximum Visibility

For on-screen display:
Scale bar to be 4 inches wide
Viewing distance 19.7 inches



Latitude: 39.34256319
Longitude: -74.46534286
Elevation of Viewpoint Position: 13.214
Height of Camera Above Ground: 5.41
Date of Photography: 1/24/2023 at 12:08
Horizontal Field of View: 124°
Vertical Field of View: 95°
Nearest Turbine: 9.6mi (15.5km) (OCS-A 0532)
Furthest Visible Turbine: 49.6mi (79.8km) (OCS-A 0541)
Horizontal Field of View the Projects Occupy: 135.6°

CORRECT VIEWING OF TRUEVIEW™ PHOTO SIMULATIONS



NOTES:

Viewpoint locations have been precision surveyed by
New York City Land Surveyors PC
63 Montgomery Avenue
Staten Island NY 10301

Heights are above mean sea level.
Structure design and placement are subject to final engineering.
No part of this photo simulation shall be altered in any way.

Photo Simulation Created Using
TrueView™ Technology
(Patent No.: US 6,184,906 B2)
Provided by



KOP 4, Stafford B (Beach Entrance), Noon, Heading 124° - Proposed View - Cumulative - External Leases and NY Bight Leases (1312ft) - Maximum Visibility

For on-screen display:
Scale bar to be 4 inches wide
Viewing distance 19.7 inches

New York Bight

Stafford B (Beach Entrance)
Camera Heading 124°

● Viewpoint Location

● Turbines

Latitude: 39.34256319

Longitude: -74.46534286

Elevation of Viewpoint Position: 13.214

Height of Camera Above Ground: 5.41

Date of Photography: 1/24/2023 at 12:08

Horizontal Field of View: 124°

Vertical Field of View: 55°

Nearest Turbine: 9.6mi (15.5km) (OCS-A 0532)

Furthest Visible Turbine: 49.6mi (79.8km) (OCS-A 0541)

Horizontal Field of View the Projects Occupy: 135.6°

CORRECT VIEWING OF TRUEVIEW™ PHOTO SIMULATIONS

NOTES:

Viewpoint locations have been precision surveyed by
New York City Land Surveyors PC
63 Montgomery Avenue
Staten Island NY 10301

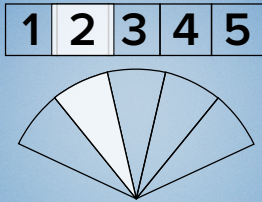
Heights are above mean sea level.
Structure design and placement are subject to final engineering.
No part of this photo simulation shall be altered in any way.

Photo Simulation Created Using
TrueView™ Technology
(Patent No.: US 6,184,906 B2)
Provided by

Truescape®
truescape.com



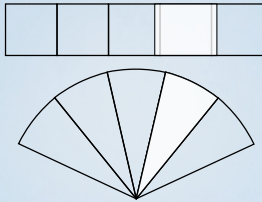
For on-screen display:
Scale bar to be 4 inches wide
Viewing distance 19.7 inches



For on-screen display:
Scale bar to be 4 inches wide
Viewing distance 19.7 inches



For on-screen display:
Scale bar to be 4 inches wide
Viewing distance 19.7 inches



For on-screen display:
Scale bar to be 4 inches wide
Viewing distance 19.7 inches

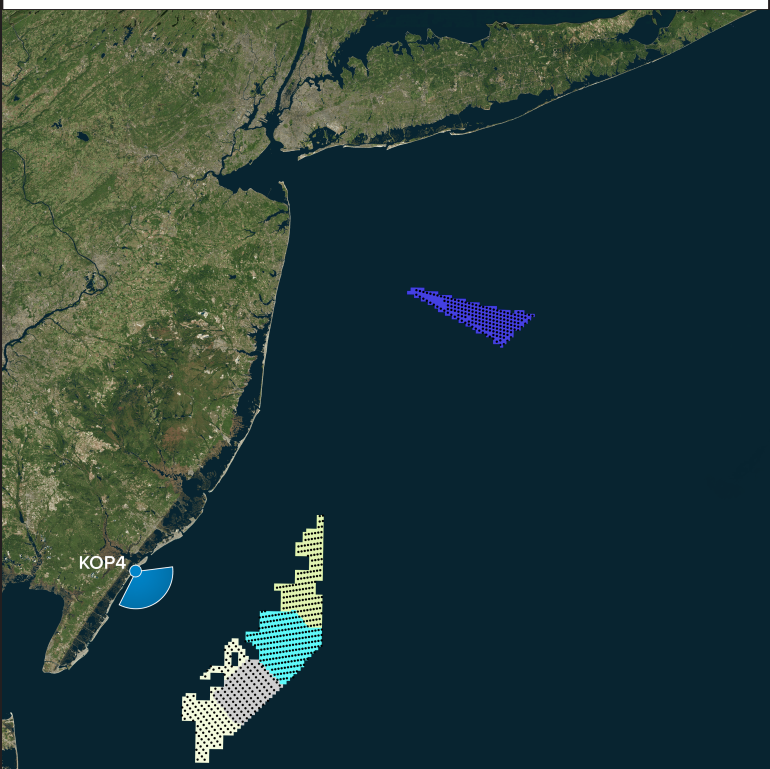


For on-screen display:
Scale bar to be 4 inches wide
Viewing distance 19.7 inches



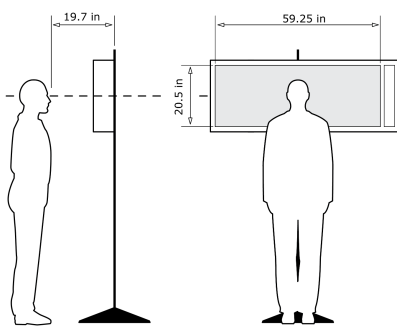
KOP 4, Stafford B (Beach Entrance), Noon, Heading 124° - Proposed View - External Leases - Predicted Visibility

For on-screen display:
Scale bar to be 4 inches wide
Viewing distance 19.7 inches



Latitude: 39.34256319
Longitude: -74.46534286
Elevation of Viewpoint Position: 13.214
Height of Camera Above Ground: 5.41
Date of Photography: 1/24/2023 at 12:08
Horizontal Field of View: 124°
Vertical Field of View: 55°

CORRECT VIEWING OF TRUEVIEW™ PHOTO SIMULATIONS



NOTES:

Viewpoint locations have been precision surveyed by
New York City Land Surveyors PC
63 Montgomery Avenue
Staten Island NY 10301

Heights are above mean sea level.
Structure design and placement are subject to final engineering.
No part of this photo simulation shall be altered in any way.

Photo Simulation Created Using
TrueView™ Technology
(Patent No.: US 6,184,906 B2)
Provided by



KOP 4, Stafford B (Beach Entrance), Noon, Heading 124° - Proposed View - External Leases - Predicted Visibility

For on-screen display:
Scale bar to be 4 inches wide
Viewing distance 19.7 inches

New York Bight

Stafford B (Beach Entrance)
Camera Heading 124°

● Viewpoint Location

● Turbines

Latitude:

39.34256319

Elevation:

74.46534286

Elevation of Viewpoint Position:

13.214

Height of Camera Above Ground:

5.41

Date of Photography:

1/24/2023 at 12:08

Horizontal Field of View:

124°

Vertical Field of View:

55°

CORRECT VIEWING OF TRUEVIEW™ PHOTO SIMULATIONS

NOTES:

Viewpoint locations have been precision surveyed by
New York City Land Surveyors PC
63 Montgomery Avenue
Staten Island NY 10301

Heights are above mean sea level.
Structure design and placement are subject to final engineering.
No part of this photo simulation shall be altered in any way.

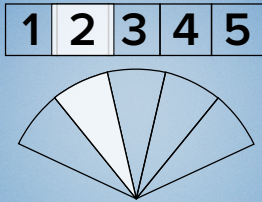
Photo Simulation Created Using
TrueView™ Technology
(Patent No.: US 6,184,906 B2)
Provided by

Truescape®
truescape.com

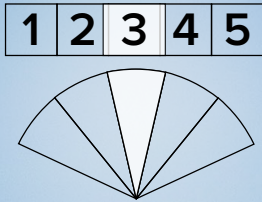
1/24/2023 at 12:08 - KOP 4



For on-screen display:
Scale bar to be 4 inches wide
Viewing distance 19.7 inches



For on-screen display:
Scale bar to be 4 inches wide
Viewing distance 19.7 inches



For on-screen display:
Scale bar to be 4 inches wide
Viewing distance 19.7 inches



For on-screen display:
Scale bar to be 4 inches wide
Viewing distance 19.7 inches

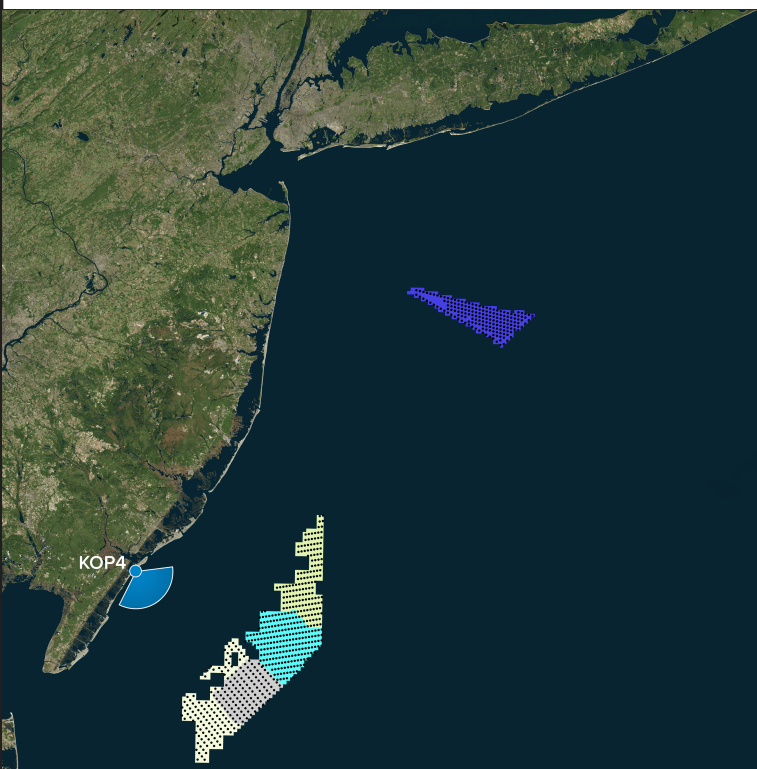


For on-screen display:
Scale bar to be 4 inches wide
Viewing distance 19.7 inches



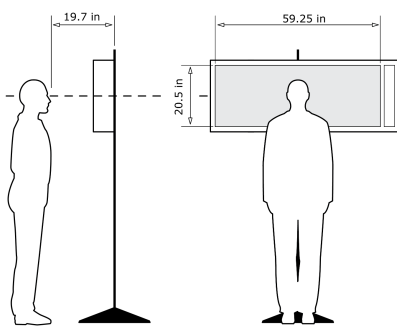
KOP 4, Stafford B (Beach Entrance), Noon, Heading 124° - **Proposed View - External Leases - Maximum Visibility**

For on-screen display:
Scale bar to be 4 inches wide
Viewing distance 19.7 inches



Latitude: 39.34256319
Longitude: -74.46534286
Elevation of Viewpoint Position: 13.214
Height of Camera Above Ground: 5.41
Date of Photography: 1/24/2023 at 12:08
Horizontal Field of View: 124°
Vertical Field of View: 55°

CORRECT VIEWING OF TRUEVIEW™ PHOTO SIMULATIONS



NOTES:

Viewpoint locations have been precision surveyed by
New York City Land Surveyors PC
63 Montgomery Avenue
Staten Island NY 10301

Heights are above mean sea level.
Structure design and placement are subject to final engineering.
No part of this photo simulation shall be altered in any way.

Photo Simulation Created Using
TrueView™ Technology
(Patent No.: US 6,184,906 B2)
Provided by



KOP 4, Stafford B (Beach Entrance), Noon, Heading 124° - Proposed View - External Leases - Maximum Visibility

For on-screen display:
Scale bar to be 4 inches wide
Viewing distance 19.7 inches

New York Bight

Stafford B (Beach Entrance)
Camera Heading 124°

● Viewpoint Location

● Turbines

Latitude:

39.34256319

Elevation:

74.46534286

Elevation of Viewpoint Position:

13.214

Height of Camera Above Ground:

5.41

Date of Photography:

1/24/2023 at 12:08

Horizontal Field of View:

124°

Vertical Field of View:

55°

CORRECT VIEWING OF TRUEVIEW™ PHOTO SIMULATIONS

NOTES:

Viewpoint locations have been precision surveyed by
New York City Land Surveyors PC
63 Montgomery Avenue
Staten Island NY 10301

Heights are above mean sea level.
Structure design and placement are subject to final engineering.
No part of this photo simulation shall be altered in any way.

Photo Simulation Created Using
TrueView™ Technology
(Patent No.: US 6,184,906 B2)
Provided by

Truescape®
truescape.com

1/24/2023 at 12:08 - KOP 4



For on-screen display:
Scale bar to be 4 inches wide
Viewing distance 19.7 inches



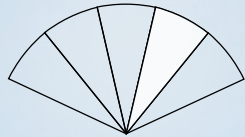
For on-screen display:
Scale bar to be 4 inches wide
Viewing distance 19.7 inches



For on-screen display:
Scale bar to be 4 inches wide
Viewing distance 19.7 inches



1 2 3 4 5



For on-screen display:
Scale bar to be 4 inches wide
Viewing distance 19.7 inches



For on-screen display:
Scale bar to be 4 inches wide
Viewing distance 19.7 inches