

Base Photographic Documentation

Date (MM/DD/YYYY):	3/16/2023
Time (24hr):	19:49
GPS Longitude:	-74.23548
GPS Latitude:	39.56188
Viewpoint Elevation (ft):	8
Camera Height (ft):	5.47
Camera Heading (°):	96
Camera Direction:	E

Camera Information

Camera Make & Model:	Canon EOS 5DS R
Camera Sensor Size:	36mm x 24mm
Lens Make & Model:	Sigma F1.4 DG HSM A016
Lens Focal Length:	20mm
Field of View:	65.47° (H) / 46.397° (V)

Sun And Weather Information

Sun Azimuth:	N/A
Sun Elevation:	N/A
Lighting Angle (On Turbines):	N/A
Weather Conditions:	Fair
Maximum Visibility (NM):	24.98
Temperature (°F):	48
Temperature (°C):	8.89
Humidity (%):	46

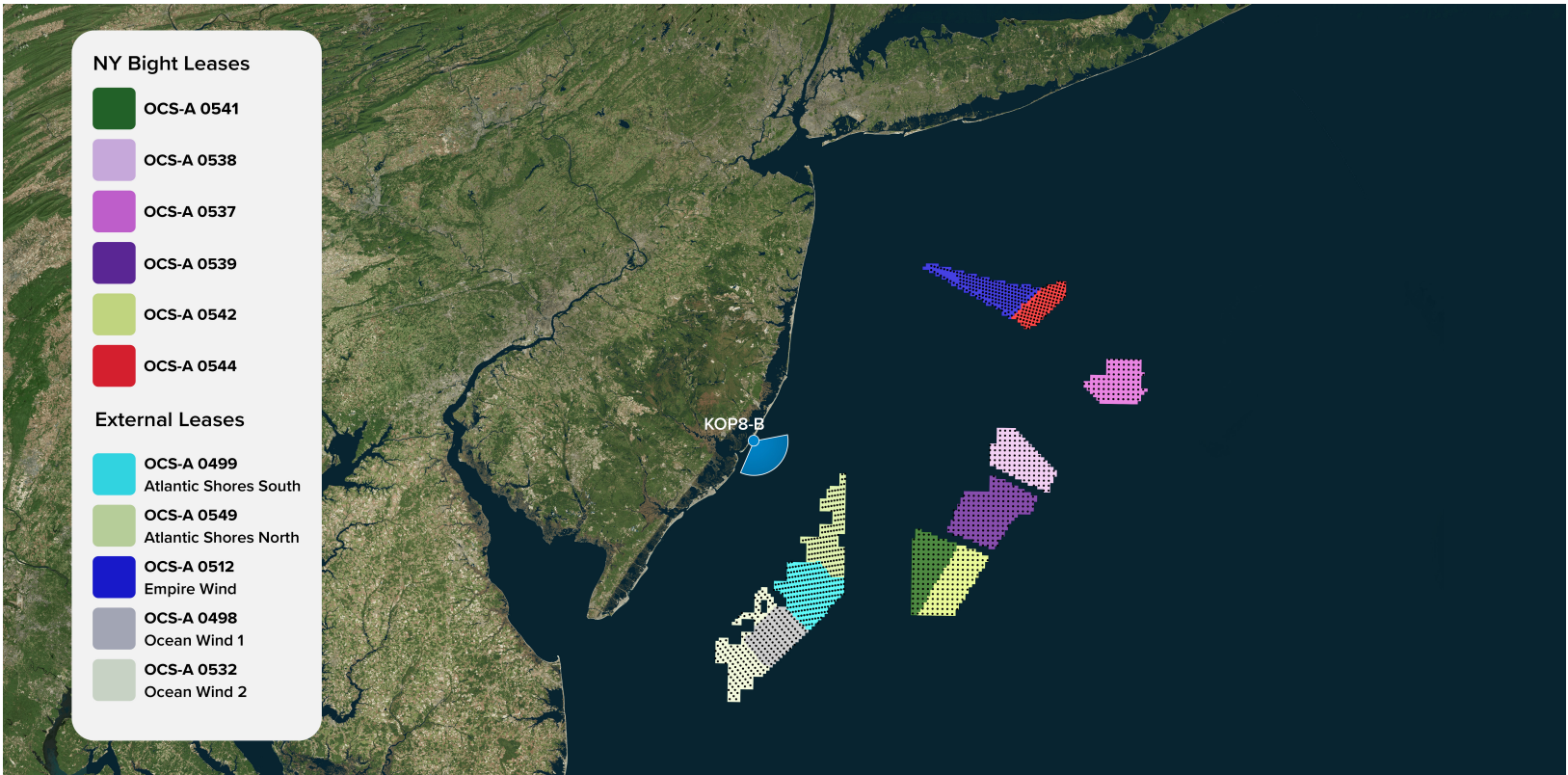
Viewing Instructions

11 x 17 inch Printed Display:	Distance is 19.7 inches (500mm)
On-Screen Display:	Distance is 19.7 inches (500mm)

Image Preview



Context Map



● Key Observation Point (KOP) ● Turbines

NY Bight Turbine Information - 1312ft (399.9m)

Lease Area	Distance to Nearest Turbine in Miles (km)	Turbines Visible		
		Blade Tip	Hub	Mid Tower
Total	-	658	85	0
OCS-A 0544	70.76 (113.88)	0	0	0
OCS-A 0537	76.94 (123.82)	0	0	0
OCS-A 0538	50.85 (81.84)	0	0	0
OCS-A 0539	40.55 (65.26)	162	0	0
OCS-A 0541	32.64 (52.52)	246	85	0
OCS-A 0542	40.93 (65.88)	250	0	0

Blade tip counts are a summation of only blade tips visible, only hubs visible, and mid-towers visible. Hub counts are a summation of only hubs visible and mid towers visible.

Turbine Visibility	Turbine Visibility & Percentage
Amount of Nearest Turbine Hidden in ft (m)	528.2 (161.0)
Percent of Nearest Turbine Hidden (%)	40.3%
Amount of Nearest Turbine Visible in ft (m)	783.9 (238.9)
Percent of Nearest Turbine Visible (%)	59.7%

NY Bight Turbine Specifications

Turbine Components	Measurements ft (m)
Rotor Diameter in ft (m)	1212 (369.4)
Total Height to Tip of Blade in ft (m)	1312 (399.9)
Hub Height in ft (m)	706 (215.2)
Support Structure Height in ft (m)	25 (7.6)
Service Platform in ft (m)	100 (30.5) × 200 (61.0) Steel Platform above MWS
Total Number of Turbines	1481

NY Bight Turbine Information - 853ft (260m)

Lease Area	Distance to Nearest Turbine in Miles (km)	Turbines Visible		
		Blade Tip	Hub	Mid Tower
Total	-	196	0	0
OCS-A 0544	70.76 (113.88)	0	0	0
OCS-A 0537	76.94 (123.82)	0	0	0
OCS-A 0538	50.85 (81.84)	0	0	0
OCS-A 0539	40.55 (65.26)	0	0	0
OCS-A 0541	32.64 (52.52)	196	0	0
OCS-A 0542	40.93 (65.88)	0	0	0

Blade tip counts are a summation of only blade tips visible, only hubs visible, and mid-towers visible. Hub counts are a summation of only hubs visible and mid towers visible.

Turbine Visibility	Turbine Visibility & Percentage
Amount of Nearest Turbine Hidden in ft (m)	528.2 (161.0)
Percent of Nearest Turbine Hidden (%)	61.9%
Amount of Nearest Turbine Visible in ft (m)	324.8 (99.0)
Percent of Nearest Turbine Visible (%)	38.1%

NY Bight Turbine Specifications

Turbine Components	Measurements ft (m)
Rotor Diameter in ft (m)	722 (220.1)
Total Height to Tip of Blade in ft (m)	853 (260)
Hub Height in ft (m)	361 (110)
Support Structure Height in ft (m)	25 (7.6)
Service Platform in ft (m)	100 (30.5) × 200 (61.0) Steel Platform above MWS
Total Number of Turbines	1481

External Turbine Information

Lease Area	Distance to Nearest Turbine in Miles (km)	Turbines Visible		
		Blade Tip	Hub	Mid Tower
Total	-	548	443	N/A
OCS-A 0499	13.5 (21.7)	200	200	N/A
OCS-A 0549	9.8 (15.8)	157	157	N/A
OCS-A 0512	0	0	0	N/A
OCS-A 0498	24.5 (39.4)	98	61	N/A
OCS-A 0532	20.2 (32.6)	93	25	N/A

Cumulative Turbine Visibility
(Total WTG Count for NY Bight + External Leases)

1312ft (399.9m)			853ft (260m)		
Blade Tip	Hub	Mid Tower	Blade Tip	Hub	Mid Tower
1206	528	0	744	443	0

The cumulative mid tower counts for both turbine heights are conservative values due to having no mid tower data for the external leases.

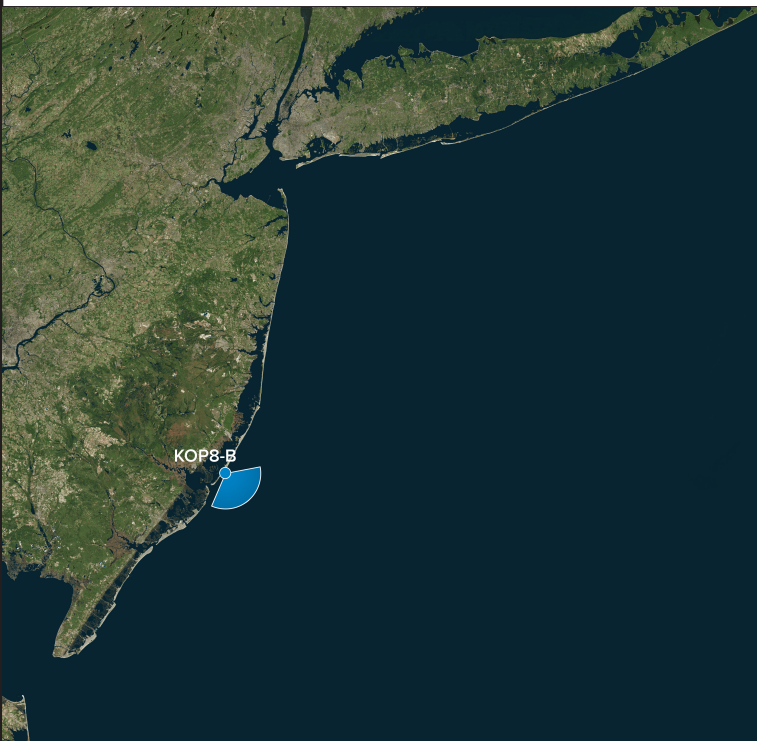
External Turbine Specifications

Lease Area	Rotor Diameter in ft (m)	Total Height to Tip of Blade in ft (m)	Hub Height in ft (m)	Support Structure Height in ft (m)
OCS-A 0499	918.6 (279.9)	1049 (319.7)	577 (176)	25 (7.6)
OCS-A 0549	918.6 (279.9)	1049 (319.7)	577 (176)	25 (7.6)
OCS-A 0512	853 (259.9)	951 (290)	525 (160)	25 (7.6)
OCS-A 0498	788 (240.1)	906 (276)	512 (156)	25 (7.6)
OCS-A 0532	788 (240.1)	906 (276)	512 (156)	25 (7.6)



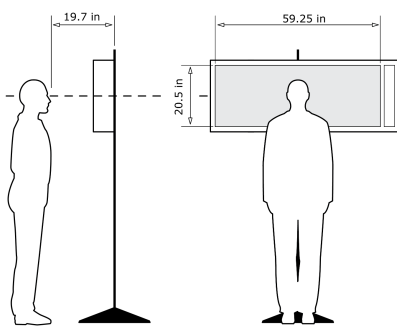
KOP 8, Beach Haven - Night, Night, Heading 96° - Existing View

For on-screen display:
Scale bar to be 4 inches wide
Viewing distance 19.7 inches



Latitude: 39.56188
Longitude: -74.23548
Elevation of Viewpoint Position: 21.67
Height of Camera Above Ground: 5.47
Date of Photography: 3/16/2023 at 19:49
Horizontal Field of View: 124°
Vertical Field of View: 55°

CORRECT VIEWING OF TRUEVIEW™ PHOTO SIMULATIONS



NOTES:

Viewpoint locations have been precision surveyed by
New York City Land Surveyors PC
63 Montgomery Avenue
Staten Island NY 10301

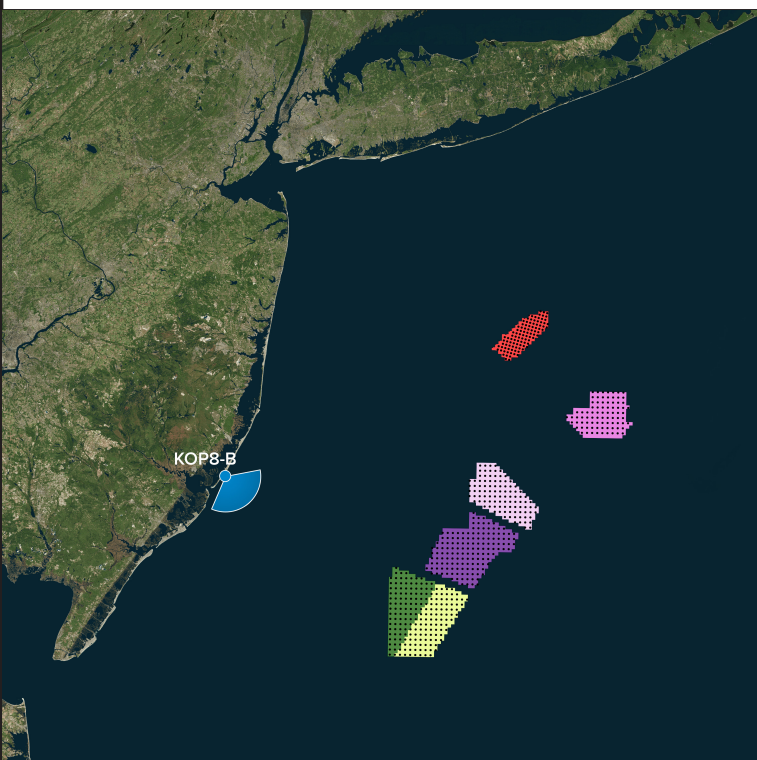
Heights are above mean sea level.
Structure design and placement are subject to final engineering.
No part of this photo simulation shall be altered in any way.

Photo Simulation Created Using
TrueView™ Technology
(Patent No.: US 8,184,906 B2)
Provided by



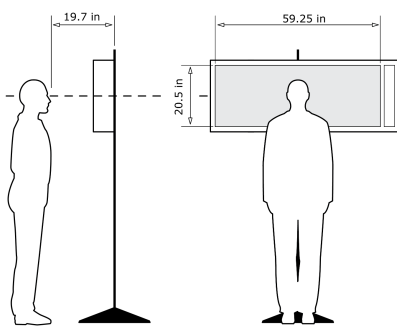
KOP 8, Beach Haven - Night, Night, Heading 96° - **Proposed View - NY Bight Leases (853ft) - Maximum Visibility**

For on-screen display:
Scale bar to be 4 inches wide
Viewing distance 19.7 inches



Latitude: 39.56188
Longitude: -74.23548
Elevation of Viewpoint Position: 21.67
Height of Camera Above Ground: 5.47
Date of Photography: 3/16/2023 at 19:49
Horizontal Field of View: 124°
Vertical Field of View: 95°
Nearest Turbine: 32.6mi (52.5km) (OCS-A 0541)
Furthest Visible Turbine: 40.2mi (64.7km) (OCS-A 0541)
Horizontal Field of View the Projects Occupy: 27.2°

CORRECT VIEWING OF TRUEVIEW™ PHOTO SIMULATIONS



NOTES:

Viewpoint locations have been precision surveyed by
New York City Land Surveyors PC
63 Montgomery Avenue
Staten Island NY 10301

Heights are above mean sea level.
Structure design and placement are subject to final engineering.
No part of this photo simulation shall be altered in any way.

Photo Simulation Created Using
TrueView™ Technology
(Patent No.: US 8,184,906 B2)

Provided by

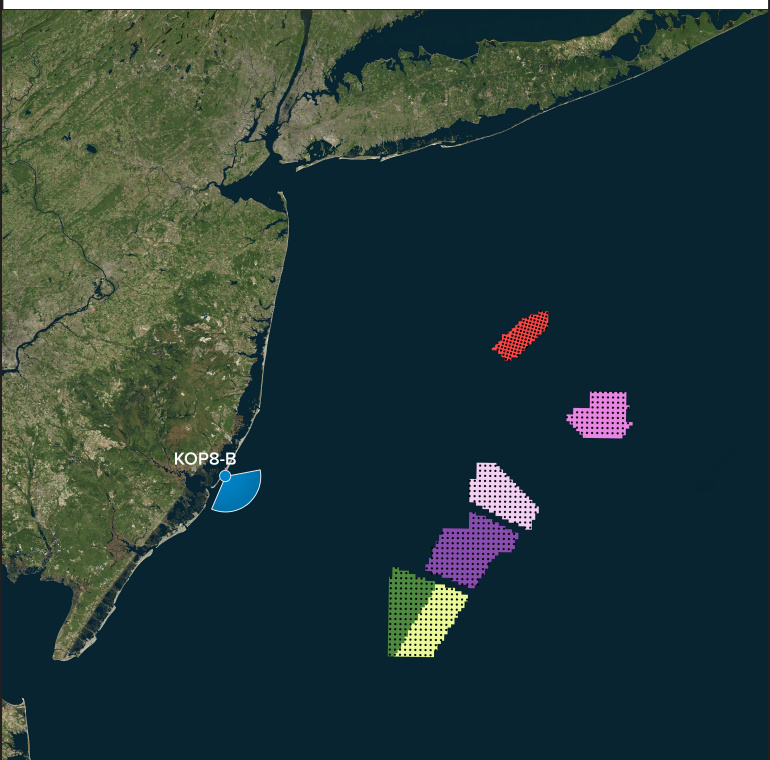
Truescape®

truescape.com



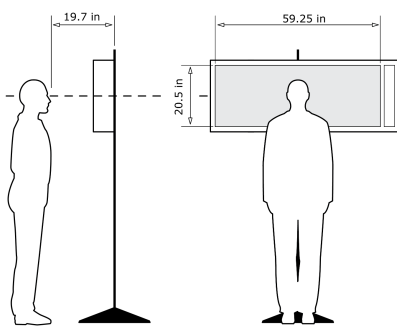
KOP 8, Beach Haven - Night, Night, Heading 96° - **Proposed View - NY Bight Leases (853ft) - Maximum Visibility**

For on-screen display:
Scale bar to be 4 inches wide
Viewing distance 19.7 inches



Latitude: 39.56188
Longitude: -74.23548
Elevation of Viewpoint Position: 21.67
Height of Camera Above Ground: 5.47
Date of Photography: 3/16/2023 at 19:49
Horizontal Field of View: 124°
Vertical Field of View: 95°
Nearest Turbine: 32.6mi (52.5km) (OCS-A 0541)
Furthest Visible Turbine: 40.2mi (64.7km) (OCS-A 0541)
Horizontal Field of View the Projects Occupy: 27.2°

CORRECT VIEWING OF TRUEVIEW™ PHOTO SIMULATIONS



NOTES:

Viewpoint locations have been precision surveyed by
New York City Land Surveyors PC
63 Montgomery Avenue
Staten Island NY 10301

Heights are above mean sea level.
Structure design and placement are subject to final engineering.
No part of this photo simulation shall be altered in any way.

Photo Simulation Created Using
TrueView™ Technology
(Patent No.: US 8,184,906 B2)
Provided by



1 2 3 4 5



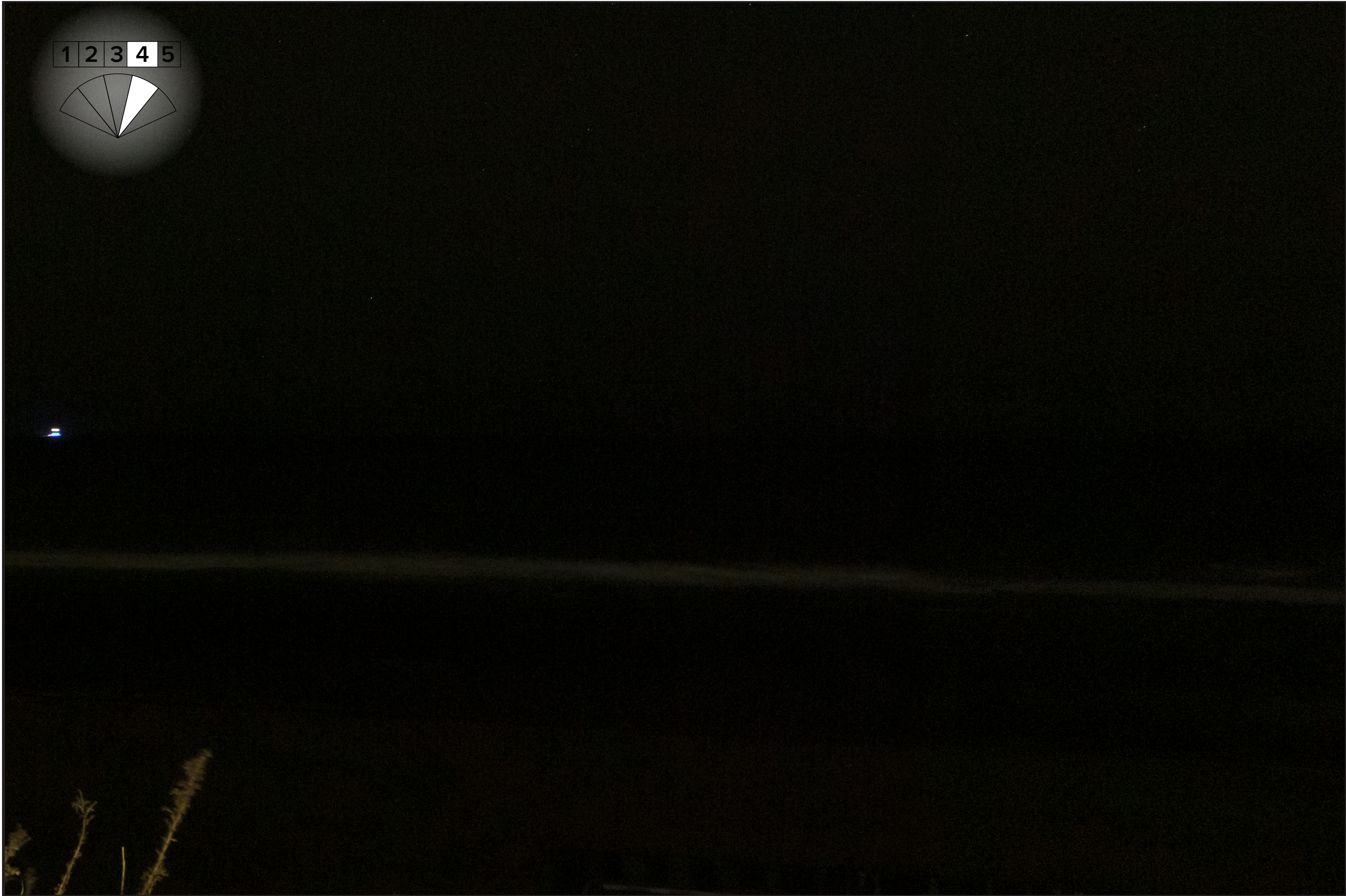
For on-screen display:
Scale bar to be 4 inches wide
Viewing distance 19.7 inches



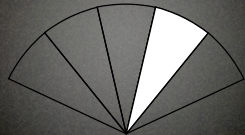
For on-screen display:
Scale bar to be 4 inches wide
Viewing distance 19.7 inches



For on-screen display:
Scale bar to be 4 inches wide
Viewing distance 19.7 inches



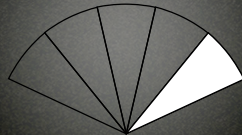
1 2 3 4 5



For on-screen display:
Scale bar to be 4 inches wide
Viewing distance 19.7 inches



1 2 3 4 5

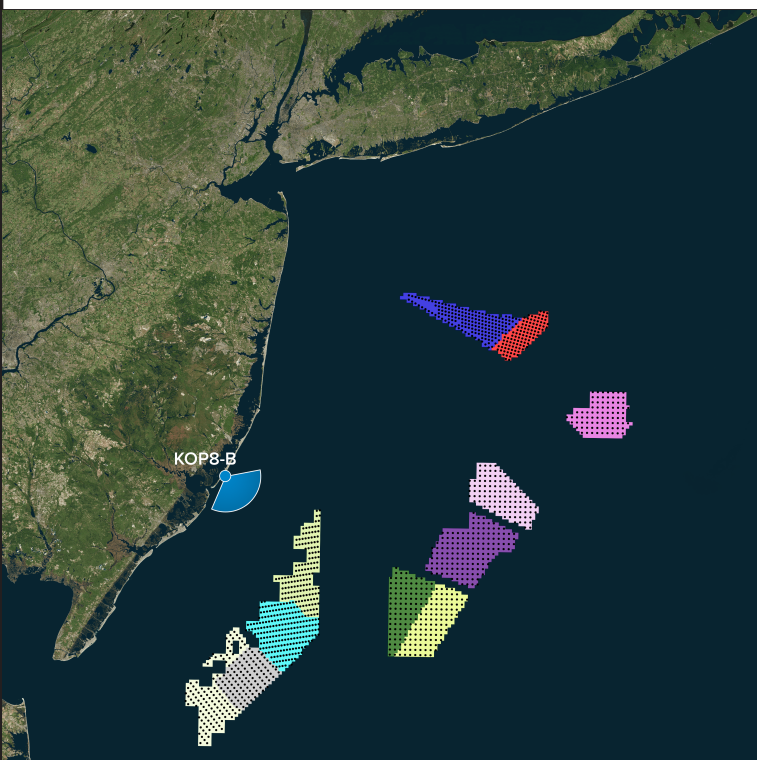


For on-screen display:
Scale bar to be 4 inches wide
Viewing distance 19.7 inches



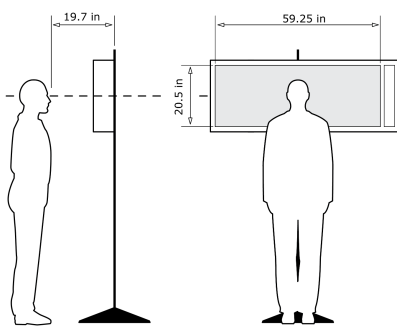
KOP 8, Beach Haven - Night, Night, Heading 96° - **Proposed View - Cumulative - External Leases and NY Bight Leases (853ft) - Maximum Visibility**

For on-screen display:
Scale bar to be 4 inches wide
Viewing distance 19.7 inches



Latitude: 39.56188
Longitude: -74.23548
Elevation of Viewpoint Position: 21.67
Height of Camera Above Ground: 5.47
Date of Photography: 3/16/2023 at 19:49
Horizontal Field of View: 124°
Vertical Field of View: 55°
Nearest Turbine: 9.8mi (15.8km) (OCS-A 0549)
Furthest Visible Turbine: 41.1mi (66.1km) (OCS-A 0532)
Horizontal Field of View the Projects Occupy: 139.7°

CORRECT VIEWING OF TRUEVIEW™ PHOTO SIMULATIONS



NOTES:

Viewpoint locations have been precision surveyed by
New York City Land Surveyors PC
63 Montgomery Avenue
Staten Island NY 10301

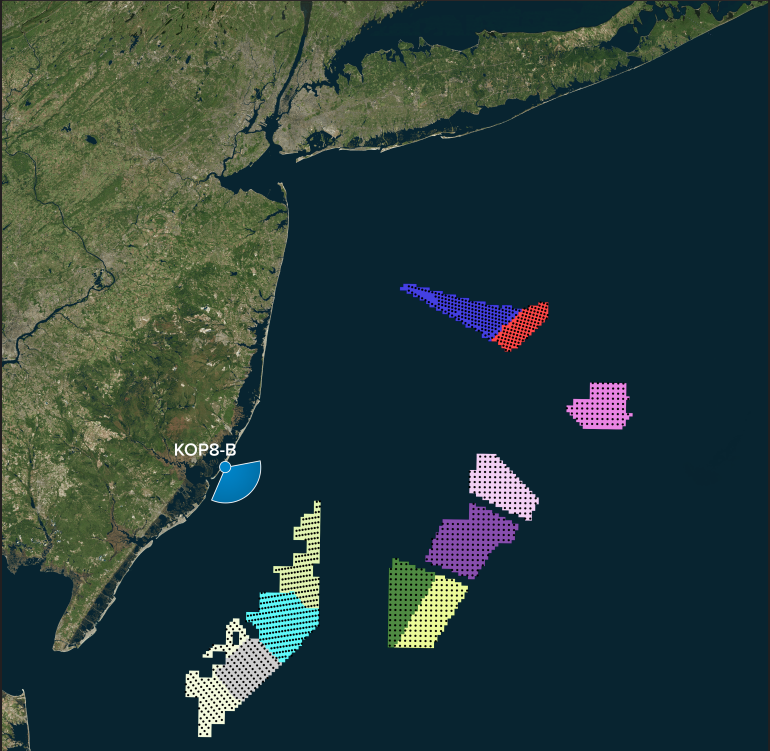
Heights are above mean sea level.
Structure design and placement are subject to final engineering.
No part of this photo simulation shall be altered in any way.

Photo Simulation Created Using
TrueView™ Technology
(Patent No.: US 8,184,906 B2)
Provided by



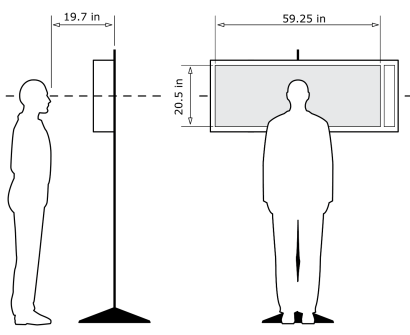
KOP 8, Beach Haven - Night, Night, Heading 96° - **Proposed View - Cumulative - External Leases and NY Bight Leases (853ft) - Maximum Visibility**

For on-screen display:
Scale bar to be 4 inches wide
Viewing distance 19.7 inches



Latitude: 39.56188
Longitude: -74.23548
Elevation of Viewpoint Position: 21.67
Height of Camera Above Ground: 5.47
Date of Photography: 3/16/2023 at 19:49
Horizontal Field of View: 124°
Vertical Field of View: 55°
Nearest Turbine: 9.8mi (15.8km) (OCS-A 0549)
Furthest Visible Turbine: 41.1mi (66.1km) (OCS-A 0532)
Horizontal Field of View the Projects Occupy: 139.7°

CORRECT VIEWING OF TRUEVIEW™ PHOTO SIMULATIONS



NOTES:

Viewpoint locations have been precision surveyed by
New York City Land Surveyors PC
63 Montgomery Avenue
Staten Island NY 10301

Heights are above mean sea level.
Structure design and placement are subject to final engineering.
No part of this photo simulation shall be altered in any way.

Photo Simulation Created Using
TrueView™ Technology
(Patent No.: US 8,184,906 B2)
Provided by



For on-screen display:
Scale bar to be 4 inches wide
Viewing distance 19.7 inches



For on-screen display:
Scale bar to be 4 inches wide
Viewing distance 19.7 inches



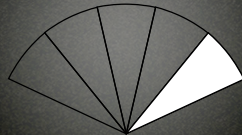
For on-screen display:
Scale bar to be 4 inches wide
Viewing distance 19.7 inches



For on-screen display:
Scale bar to be 4 inches wide
Viewing distance 19.7 inches



1 2 3 4 5

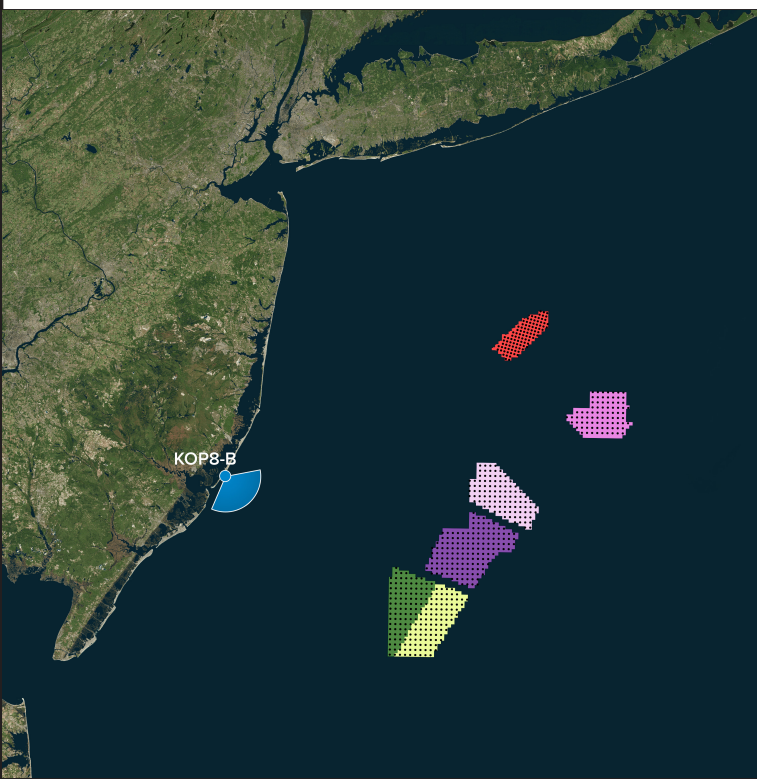


For on-screen display:
Scale bar to be 4 inches wide
Viewing distance 19.7 inches



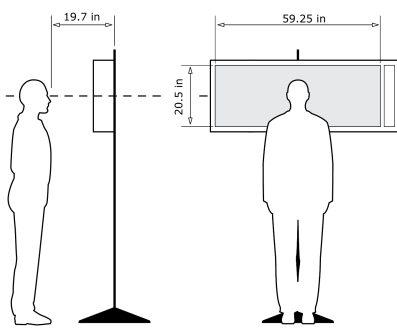
KOP 8, Beach Haven - Night, Night, Heading 96° - **Proposed View - NY Bight Leases (1312ft) - Maximum Visibility**

For on-screen display:
Scale bar to be 4 inches wide
Viewing distance 19.7 inches



Latitude: 39.56188
Longitude: -74.23548
Elevation of Viewpoint Position: 21.67
Height of Camera Above Ground: 5.47
Date of Photography: 3/16/2023 at 19:49
Horizontal Field of View: 124°
Vertical Field of View: 95°
Nearest Turbine: 32.6mi (52.5km) (OCS-A 0541)
Furthest Visible Turbine: 48.9mi (78.7km) (OCS-A 0542)
Horizontal Field of View the Projects Occupy: 42.7°

CORRECT VIEWING OF TRUEVIEW™ PHOTO SIMULATIONS



NOTES:

Viewpoint locations have been precision surveyed by
New York City Land Surveyors PC
63 Montgomery Avenue
Staten Island NY 10301

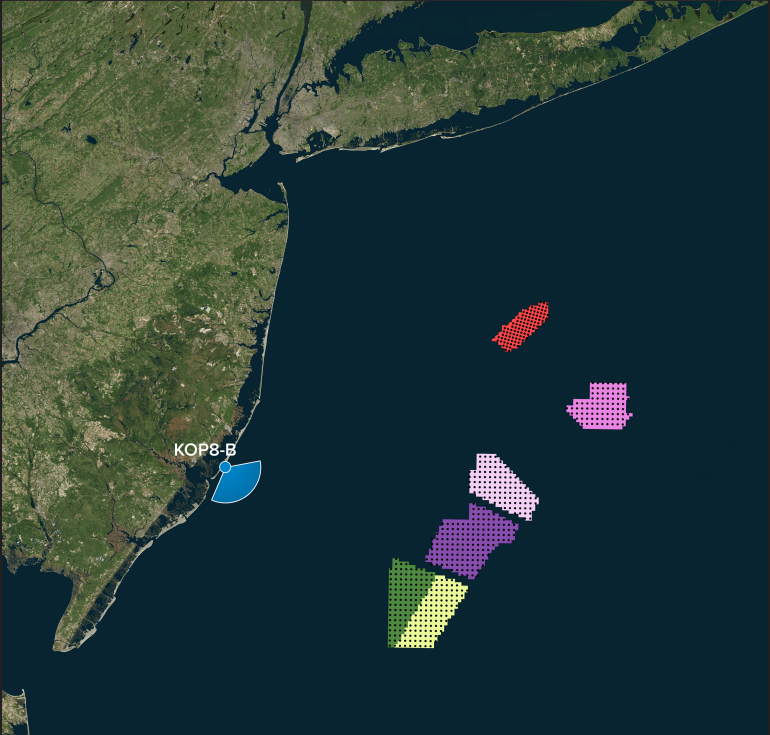
Heights are above mean sea level.
Structure design and placement are subject to final engineering.
No part of this photo simulation shall be altered in any way.

Photo Simulation Created Using
TrueView™ Technology
(Patent No.: US 8,184,906 B2)
Provided by



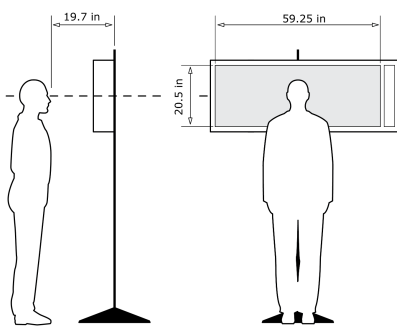
KOP 8, Beach Haven - Night, Night, Heading 96° - **Proposed View - NY Bight Leases (1312ft) - Maximum Visibility**

For on-screen display:
Scale bar to be 4 inches wide
Viewing distance 19.7 inches



Latitude: 39.56188
Longitude: -74.23548
Elevation of Viewpoint Position: 21.67
Height of Camera Above Ground: 5.47
Date of Photography: 3/16/2023 at 19:49
Horizontal Field of View: 124°
Vertical Field of View: 95°
Nearest Turbine: 32.6mi (52.5km) (OCS-A 0541)
Furthest Visible Turbine: 48.9mi (78.7km) (OCS-A 0542)
Horizontal Field of View the Projects Occupy: 42.7°

CORRECT VIEWING OF TRUEVIEW™ PHOTO SIMULATIONS



NOTES:

Viewpoint locations have been precision surveyed by
New York City Land Surveyors PC
63 Montgomery Avenue
Staten Island NY 10301

Heights are above mean sea level.
Structure design and placement are subject to final engineering.
No part of this photo simulation shall be altered in any way.

Photo Simulation Created Using
TrueView™ Technology
(Patent No.: US 8,184,906 B2)
Provided by



1 2 3 4 5



For on-screen display:
Scale bar to be 4 inches wide
Viewing distance 19.7 inches



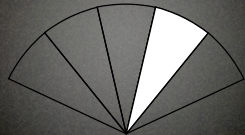
For on-screen display:
Scale bar to be 4 inches wide
Viewing distance 19.7 inches



For on-screen display:
Scale bar to be 4 inches wide
Viewing distance 19.7 inches



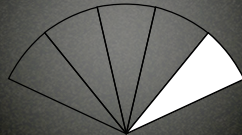
1 2 3 4 5



For on-screen display:
Scale bar to be 4 inches wide
Viewing distance 19.7 inches



12345

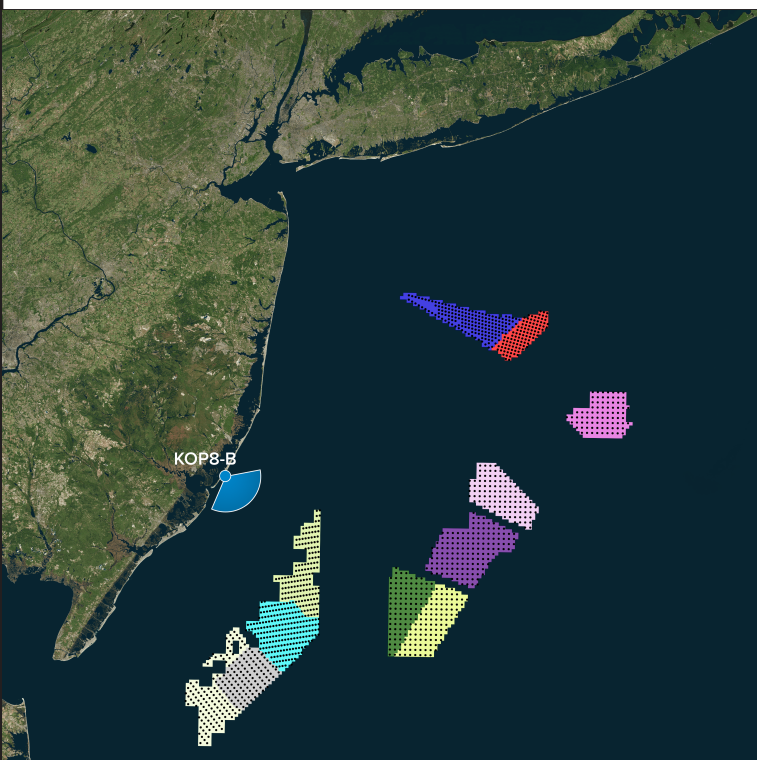


For on-screen display:
Scale bar to be 4 inches wide
Viewing distance 19.7 inches



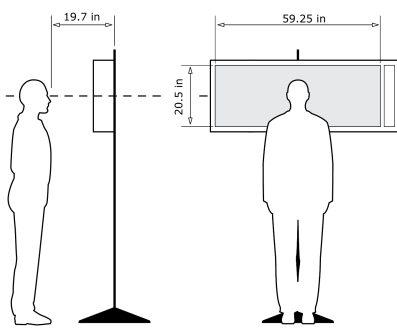
KOP 8, Beach Haven - Night, Night, Heading 96° - **Proposed View - Cumulative - External Leases and NY Bight Leases (1312ft) - Maximum Visibility**

For on-screen display:
Scale bar to be 4 inches wide
Viewing distance 19.7 inches



Latitude: 39.56188
Longitude: -74.23548
Elevation of Viewpoint Position: 21.67
Height of Camera Above Ground: 5.47
Date of Photography: 3/16/2023 at 19:49
Horizontal Field of View: 124°
Vertical Field of View: 55°
Nearest Turbine: 9.8mi (15.8km) (OCS-A 0549)
Furthest Visible Turbine: 48.9mi (78.7km) (OCS-A 0542)
Horizontal Field of View the Projects Occupy: 139.7°

CORRECT VIEWING OF TRUEVIEW™ PHOTO SIMULATIONS



NOTES:

Viewpoint locations have been precision surveyed by
New York City Land Surveyors PC
63 Montgomery Avenue
Staten Island NY 10301

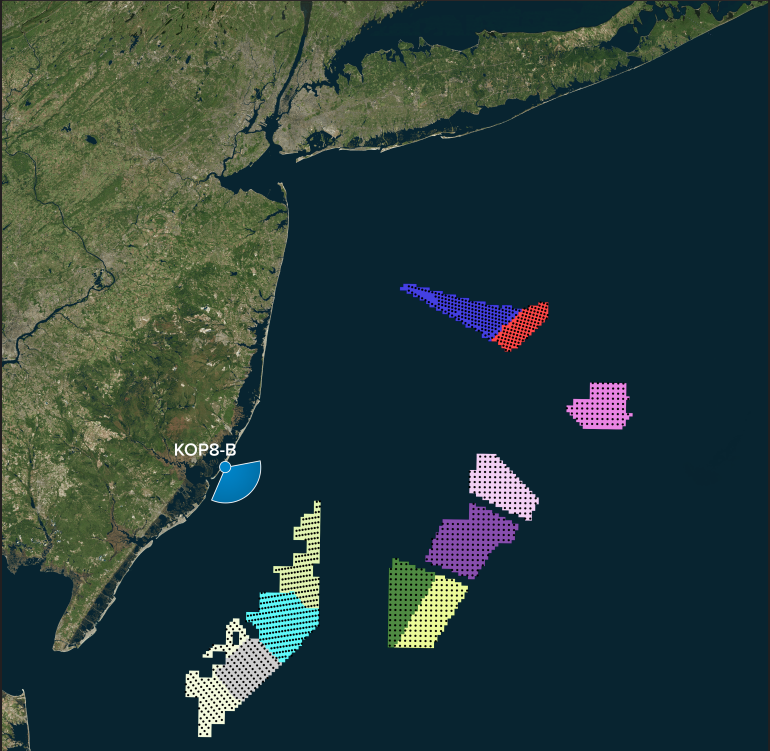
Heights are above mean sea level.
Structure design and placement are subject to final engineering.
No part of this photo simulation shall be altered in any way.

Photo Simulation Created Using
TrueView™ Technology
(Patent No.: US 8,184,906 B2)
Provided by



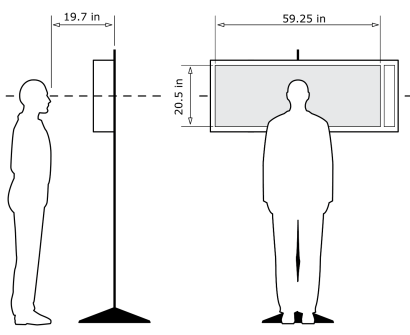
KOP 8, Beach Haven - Night, Night, Heading 96° - **Proposed View - Cumulative - External Leases and NY Bight Leases (1312ft) - Maximum Visibility**

For on-screen display:
Scale bar to be 4 inches wide
Viewing distance 19.7 inches



Latitude: 39.56188
Longitude: -74.23548
Elevation of Viewpoint Position: 21.67
Height of Camera Above Ground: 5.47
Date of Photography: 3/16/2023 at 19:49
Horizontal Field of View: 124°
Vertical Field of View: 55°
Nearest Turbine: 9.8mi (15.8km) (OCS-A 0549)
Furthest Visible Turbine: 48.9mi (78.7km) (OCS-A 0542)
Horizontal Field of View the Projects Occupy: 139.7°

CORRECT VIEWING OF TRUEVIEW™ PHOTO SIMULATIONS



NOTES:

Viewpoint locations have been precision surveyed by
New York City Land Surveyors PC
63 Montgomery Avenue
Staten Island NY 10301

Heights are above mean sea level.
Structure design and placement are subject to final engineering.
No part of this photo simulation shall be altered in any way.

Photo Simulation Created Using
TrueView™ Technology
(Patent No.: US 8,184,906 B2)
Provided by



For on-screen display:
Scale bar to be 4 inches wide
Viewing distance 19.7 inches



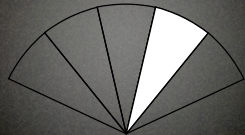
For on-screen display:
Scale bar to be 4 inches wide
Viewing distance 19.7 inches



For on-screen display:
Scale bar to be 4 inches wide
Viewing distance 19.7 inches



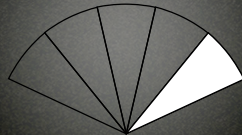
12345



For on-screen display:
Scale bar to be 4 inches wide
Viewing distance 19.7 inches



12345



For on-screen display:
Scale bar to be 4 inches wide
Viewing distance 19.7 inches



KOP 8, Beach Haven - Night, Night, Heading 96° - **Proposed View - External Leases - Maximum Visibility**

For on-screen display:
Scale bar to be 4 inches wide
Viewing distance 19.7 inches

Argonne

NATIONAL LABORATORY

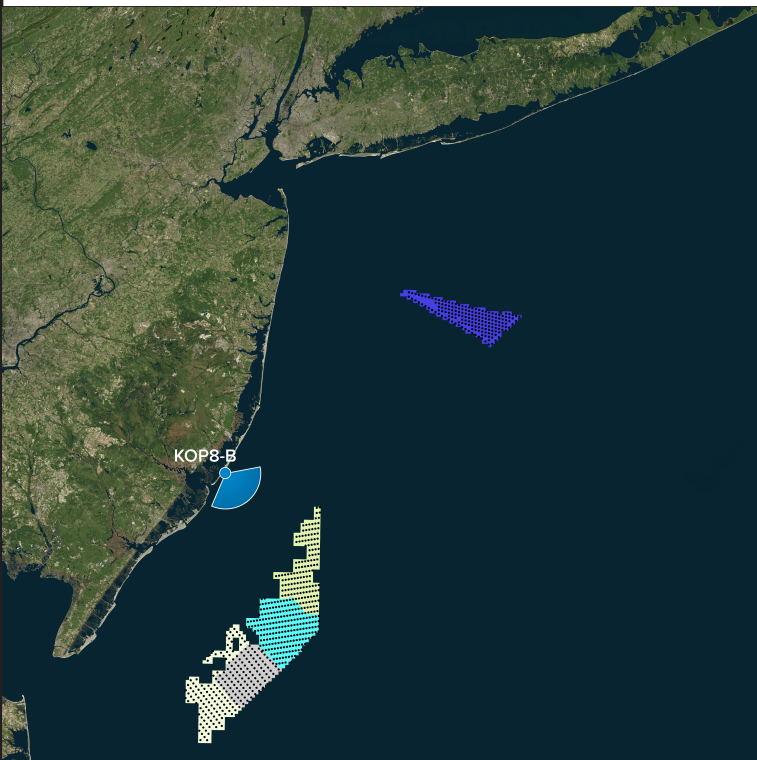
New York Bight

Beach Haven - Night

Camera Heading 96°

Viewpoint Location

Turbines



Latitude: 39.56188

Longitude: -74.23548

Elevation of Viewpoint Position: 21.67

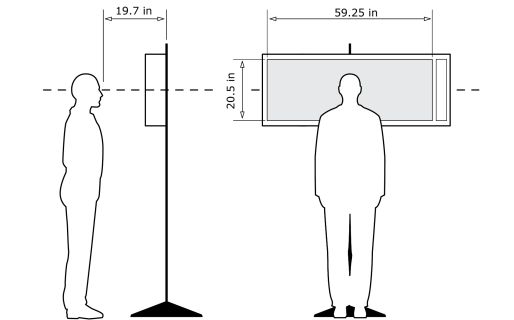
Height of Camera Above Ground: 5.47

Date of Photography: 3/16/2023 at 19:49

Horizontal Field of View: 124°

Vertical Field of View: 55°

CORRECT VIEWING OF TRUEVIEW™ PHOTO SIMULATIONS



NOTES:

Viewpoint locations have been precision surveyed by
New York City Land Surveyors PC
63 Montgomery Avenue
Staten Island NY 10301

Heights are above mean sea level.
Structure design and placement are subject to final engineering.
No part of this photo simulation shall be altered in any way.

Photo Simulation Created Using
TrueView™ Technology
(Patent No.: US 8,184,906 B2)
Provided by

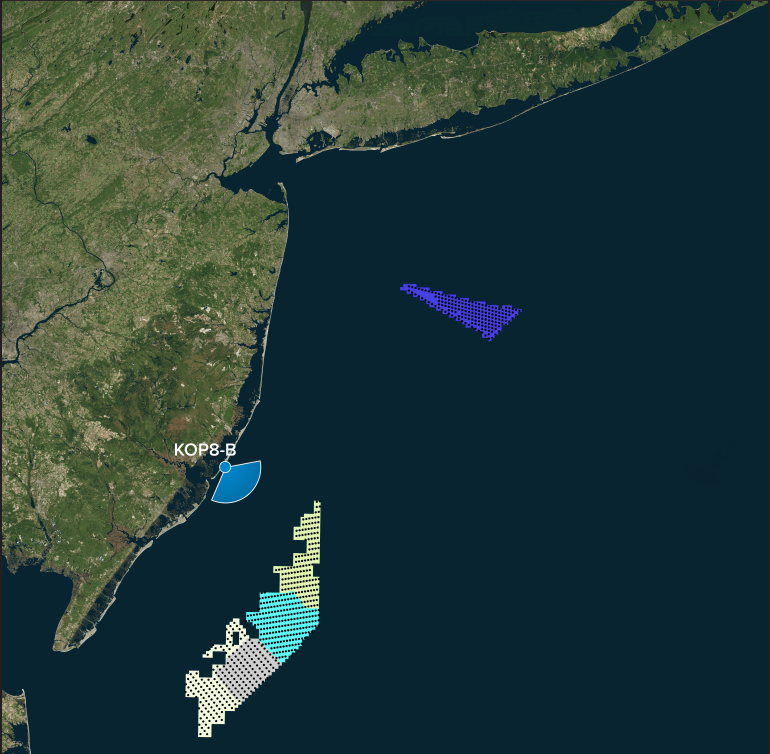
Truescape®

truescape.com



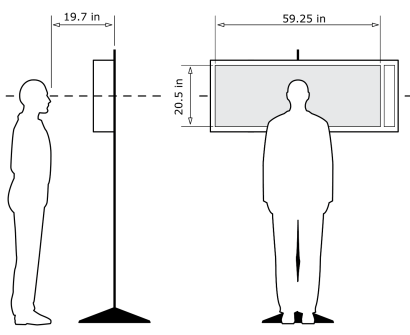
KOP 8, Beach Haven - Night, Night, Heading 96° - **Proposed View - External Leases - Maximum Visibility**

For on-screen display:
Scale bar to be 4 inches wide
Viewing distance 19.7 inches



Latitude: 39.56188
Longitude: -74.23548
Elevation of Viewpoint Position: 21.67
Height of Camera Above Ground: 5.47
Date of Photography: 3/16/2023 at 19:49
Horizontal Field of View: 124°
Vertical Field of View: 55°

CORRECT VIEWING OF TRUEVIEW™ PHOTO SIMULATIONS



NOTES:

Viewpoint locations have been precision surveyed by
New York City Land Surveyors PC
63 Montgomery Avenue
Staten Island NY 10301

Heights are above mean sea level.
Structure design and placement are subject to final engineering.
No part of this photo simulation shall be altered in any way.

Photo Simulation Created Using
TrueView™ Technology
(Patent No.: US 8,184,906 B2)
Provided by



For on-screen display:
Scale bar to be 4 inches wide
Viewing distance 19.7 inches

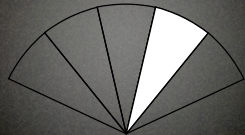




For on-screen display:
Scale bar to be 4 inches wide
Viewing distance 19.7 inches



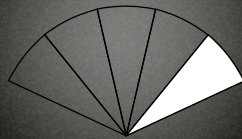
1 2 3 4 5



For on-screen display:
Scale bar to be 4 inches wide
Viewing distance 19.7 inches



1 2 3 4 5



For on-screen display:
Scale bar to be 4 inches wide
Viewing distance 19.7 inches