

# KOP 1-MV - Wasque Point

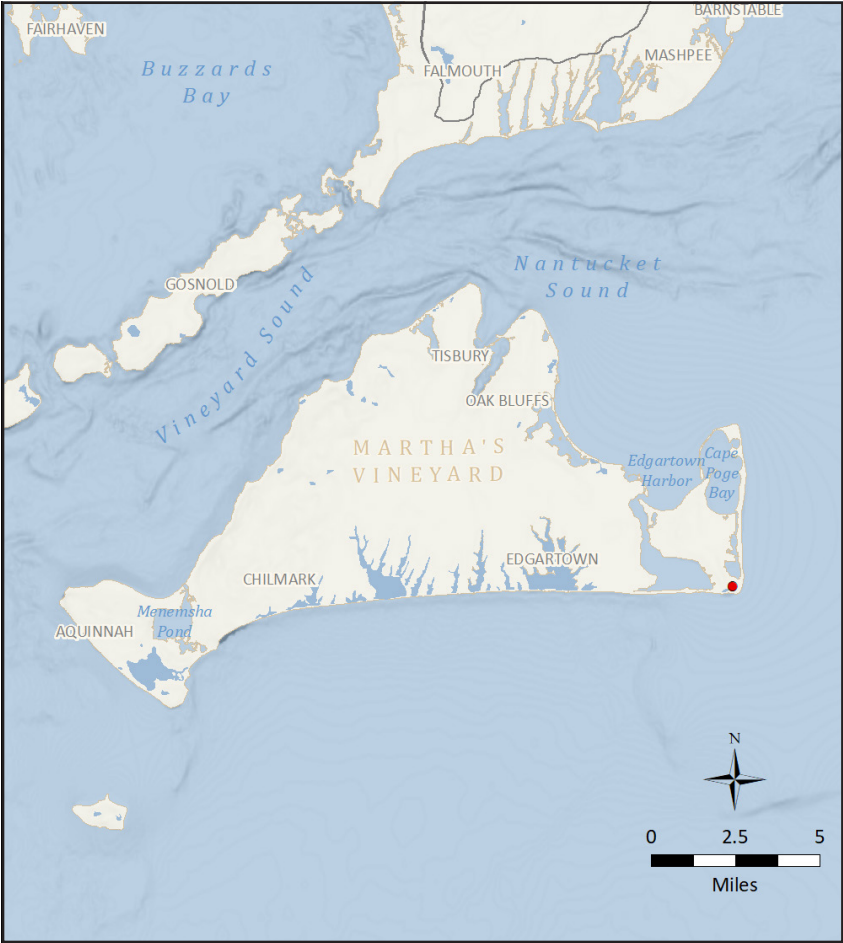
## Martha's Vineyard

### PANORAMIC PHOTOGRAPH - EXISTING CONDITIONS



This image should be viewed on a 24 inch monitor scaling the yellow square to 11" x 17" and pan the surrounding panoramic image maintaining the 11" x 17" size. The yellow area depicts the area on the following page.

### ISLAND MAP



### PHOTOGRAPH AND SITE

Time of photograph: 9:01 AM	Viewing direction: South (163°)
Date of photograph: 6-25-20	Latitude: 41.351077°N
L/SCA: Ocean Beach, Costal Scrub, Rural/Residential	Longitude: 70.454821°W
	Lighting Direction: Backlit diffused

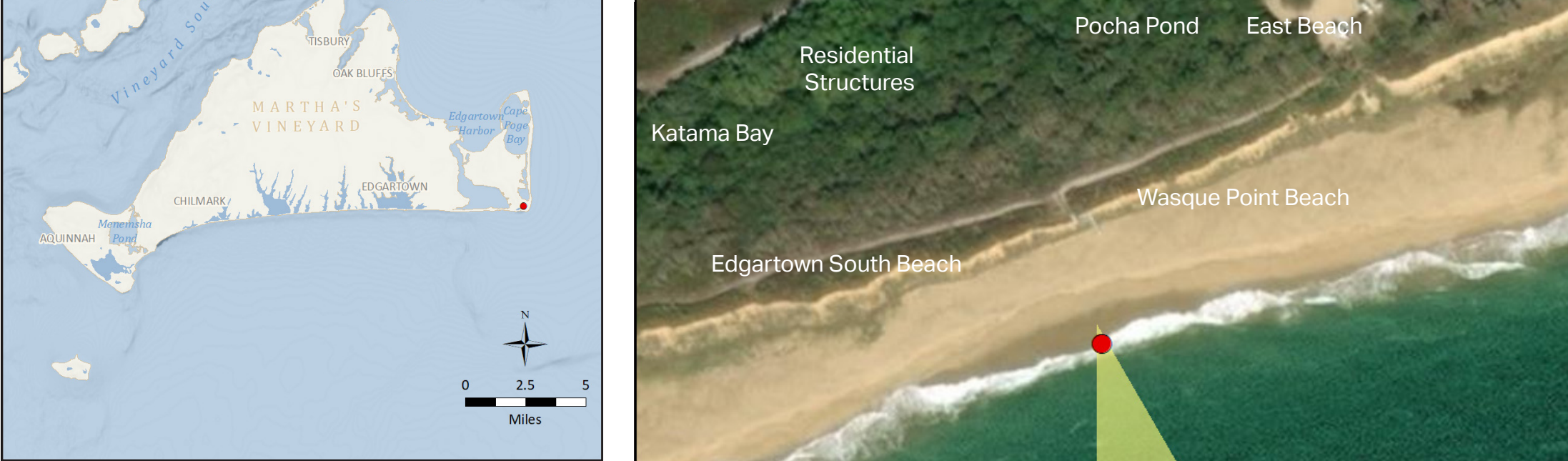
### ENVIRONMENT

Temperature: 77° F
Humidity: 58%
Wind Dir & Speed: SSW 14mph
Weather Condition: Cloudy

### CAMERA

Camera Elevation: 20.5 ft / 6.3 m	Fstop: f/7.1
Nikon D4	Shutter: 1/1250 sec
Nikon 50mm	Aperture priority
ISO: 100	Exposure bias: -0.7 step

### CONTEXT MAP



### ADJACENT FEATURES

<b>Access:</b> Trustees of Reservation Property (access fee), recreation parking area
<b>Scenic Resources:</b> Open ocean, ocean beach, coastal dunes
<b>Adjacent Amentities:</b> Trustees of Reservation entry kiosk
<b>Adjacent Areas:</b> Pocha Pond, Wasque Point Beach, Edgartown South Beach, Katama Bay, East Beach, residential structures
<b>Adjacent L/SCAs:</b> Ocean beach, open ocean, coastal scrub bush, coastal dunes, bays and ponds, low density residential structures
<b>Adjacent KOPs:</b> KOP 14-M Quammux Road, KOP 2-M Wasque Reservation, KOP 1-M Wasque Point



# KOP 1-MV - Wasque Point

Martha's Vineyard

EXISTING CONDITIONS



The page should viewed at 11" x 17" approximately 15" from viewer's eyes .



# KOP 1-MV - Wasque Point

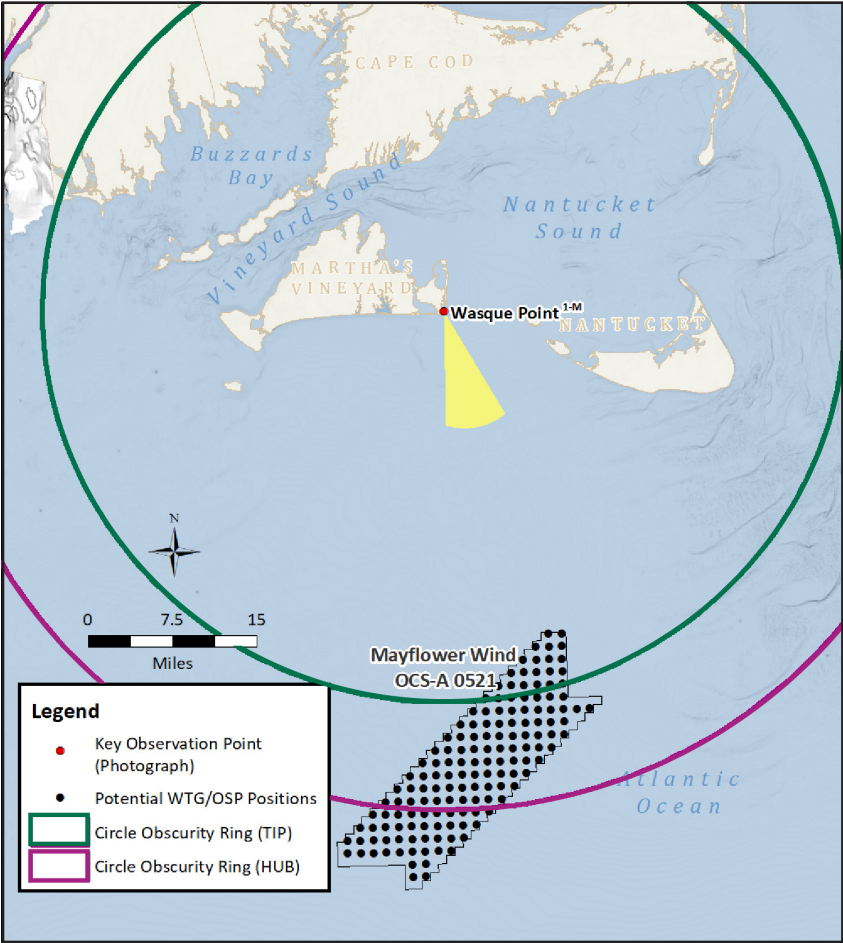
## Martha's Vineyard

### PANORAMIC PHOTOGRAPH - SIMULATED CONDITIONS



This image should be viewed on a 24 inch monitor scaling the yellow square to 11" x 17" and pan the surrounding panoramic image maintaining the 11" x 17" size. The yellow area depicts the area on the following page.

### REGIONAL MAP



### PHOTOGRAPH AND SITE

Time of photograph: 9:01 AM	Viewing direction: South (163°)
Date of photograph: 6-25-20	Latitude: 41.351077°N
L/SCA: Ocean Beach, Costal Scrub, Rural/Residential	Longitude: 70.454821°W
	Lighting Direction: Backlit diffused

### ENVIRONMENT

Temperature: 77° F
Humidity: 58%
Wind Dir & Speed: SSW 14mph
Weather Condition: Cloudy

### CAMERA

Camera Elevation: 20.5 ft / 6.3 m	Fstop: f/7.1
Nikon D4	Shutter: 1/1250 sec
Nikon 50mm	Aperture priority
ISO: 100	Exposure bias: -0.7 step

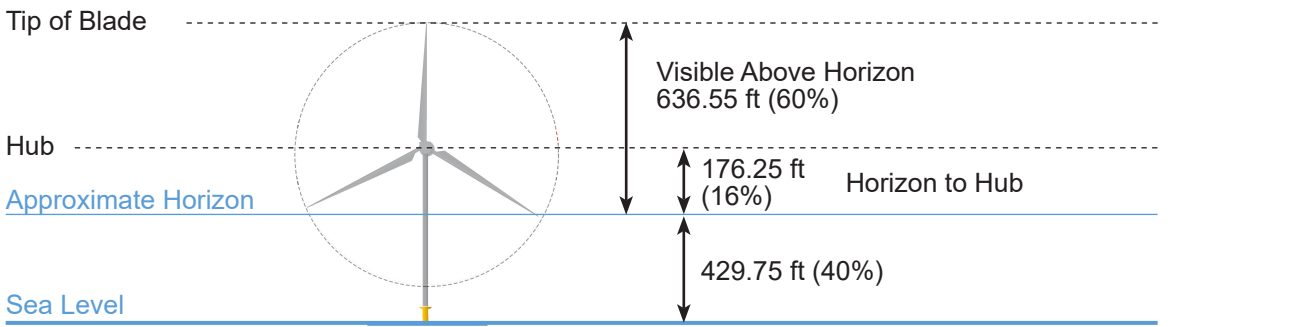
### SITE MAP



### PROJECT VIEW

Horizontal Field of View: 127°	Furthest WTG: 51.9 mi / 83.5 km
Vertical Field of View: 39.6°	Potential Number of WTGs Visible: 106
Nearest WTG: 31.2 mi / 50.2 km	Potential Number of WTGs Not Visible: 43

### VISIBILITY OF CLOSEST TURBINE





# KOP 1-MV - Wasque Point

Martha's Vineyard

**SIMULATED CONDITIONS**



The page should viewed at 11" x 17" approximately 15" from viewer's eyes .



# KOP 2-MV - Wasque Reservation

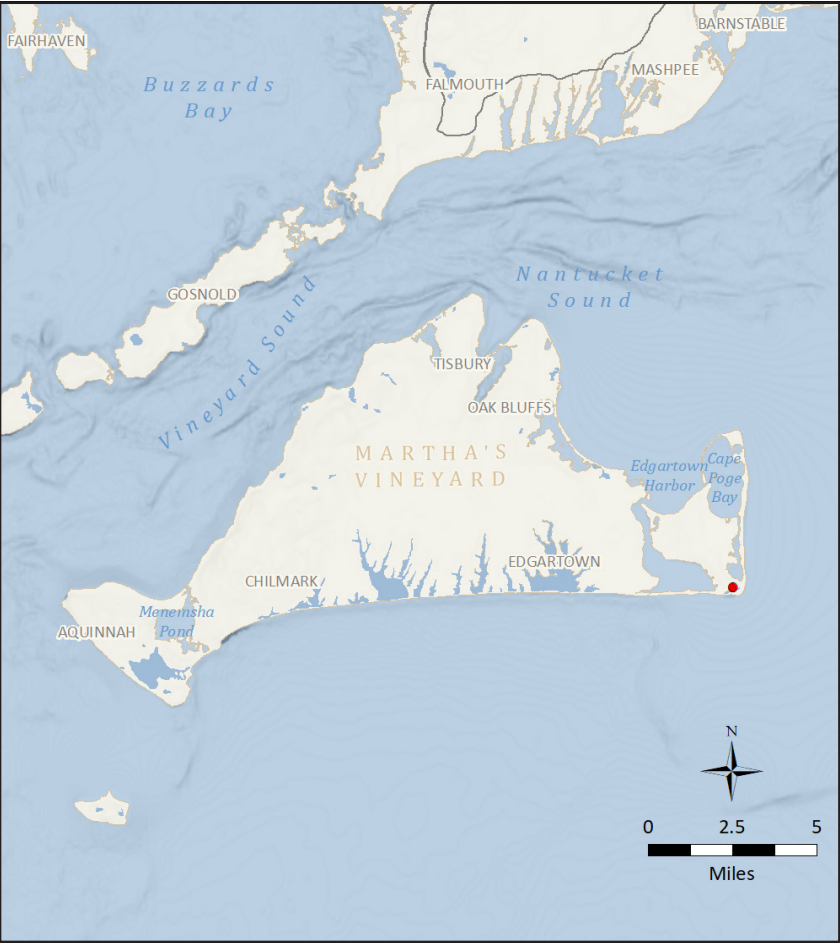
## Martha's Vineyard

### PANORAMIC PHOTOGRAPH - EXISTING CONDITIONS



This image should be viewed on a 24 inch monitor scaling the yellow square to 11" x 17" and pan the surrounding panoramic image maintaining the 11" x 17" size. The yellow area depicts the area on the following page.

### ISLAND MAP



### PHOTOGRAPH AND SITE

Time of photograph: 9:12 AM	Viewing direction: South (163°)
Date of photograph: 6-25-20	Latitude: 41.351077°N
L/SCA: Ocean Beach, Coastal Scrub, Longitude: 70.454821°W	
Ocean Beach, Rural/Residential	Lighting Direction: Backlit diffused

### ENVIRONMENT

Temperature: 77° F
Humidity: 58%
Wind Dir & Speed: SSW 14mph
Weather Condition: Cloudy

### CAMERA

Camera Elevation: 27.5 ft / 8.4 m	Fstop: f/7.1
Nikon D4	Shutter: 1/1250 sec
Nikon 50mm	Aperture priority
ISO: 100	Exposure bias: -0.7 step

### CONTEXT MAP



### ADJACENT FEATURES

<b>Access:</b> Trustees of Reservation Property (access fee), recreation parking area
<b>Scenic Resources:</b> Ocean beach, open ocean, scrub shrub landscape, coastal dunes
<b>Adjacent Amentities:</b> Trustees of Reservation entry kiosk
<b>Adjacent Areas:</b> Pocha Pond, Wasque Point Beach, Edgartown South Beach, Katama Bay, East Beach, residential structures
<b>Adjacent L/SCAs:</b> Ocean beach, open ocean, coastal scrub bush, coastal dunes, bays and ponds, medium density residential structures
<b>Adjacent KOPs:</b> KOP 14-M Quammux Road, KOP 2-M Wasque Reservation, KOP 1-M Wasque Point



# KOP 2-MV - Wasque Reservation

Martha's Vineyard

**EXISTING CONDITIONS**



The page should viewed at 11" x 17" approximately 15" from viewer's eyes .



# KOP 2-MV - Wasque Reservation

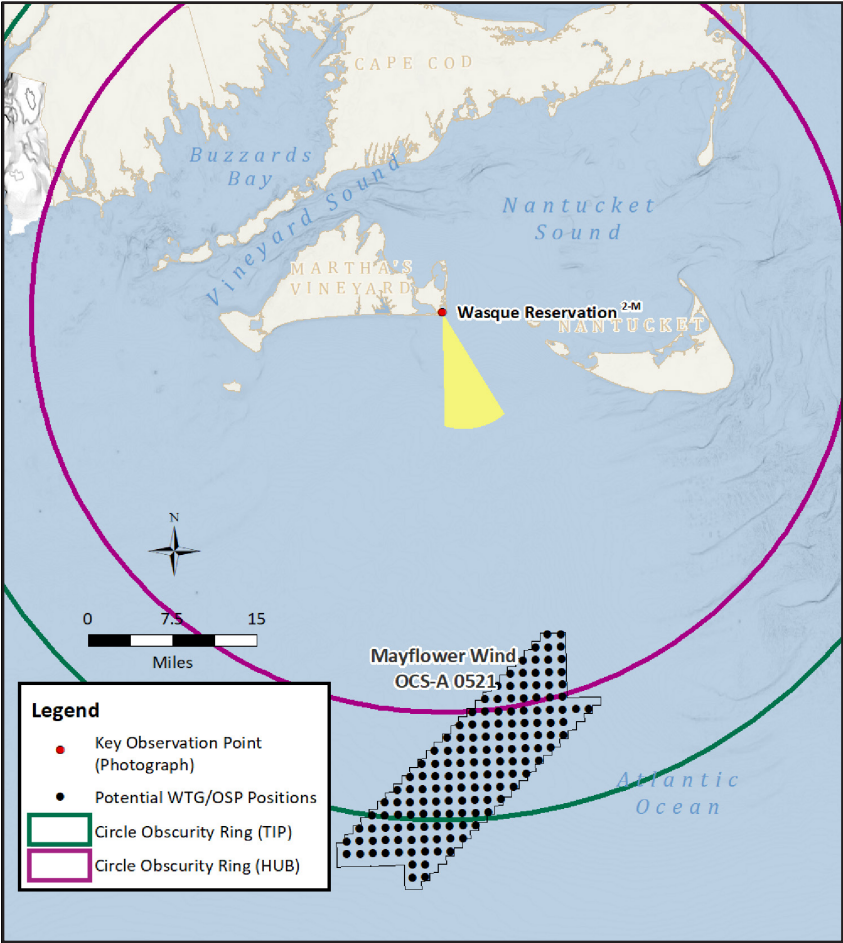
## Martha's Vineyard

### PANORAMIC PHOTOGRAPH - SIMULATED CONDITIONS



This image should be viewed on a 24 inch monitor scaling the yellow square to 11" x 17" and pan the surrounding panoramic image maintaining the 11" x 17" size. The yellow area depicts the area on the following page.

#### REGIONAL MAP



#### PHOTOGRAPH AND SITE

Time of photograph: 9:12 AM	Viewing direction: South (163°)
Date of photograph: 6-25-20	Latitude: 41.351077°N
L/SCA: Ocean Beach, Coastal Scrub, Longitude: 70.454821°W	
Ocean Beach, Rural/Residential	Lighting Direction: Backlit diffused

#### ENVIRONMENT

Temperature: 77° F
Humidity: 58%
Wind Dir & Speed: SSW 14mph
Weather Condition: Cloudy

#### CAMERA

Camera Elevation: 27.5 ft / 8.4 m	Fstop: f/7.1
Nikon D4	Shutter: 1/1250 sec
Nikon 50mm	Aperture priority
ISO: 100	Exposure bias: -0.7 step

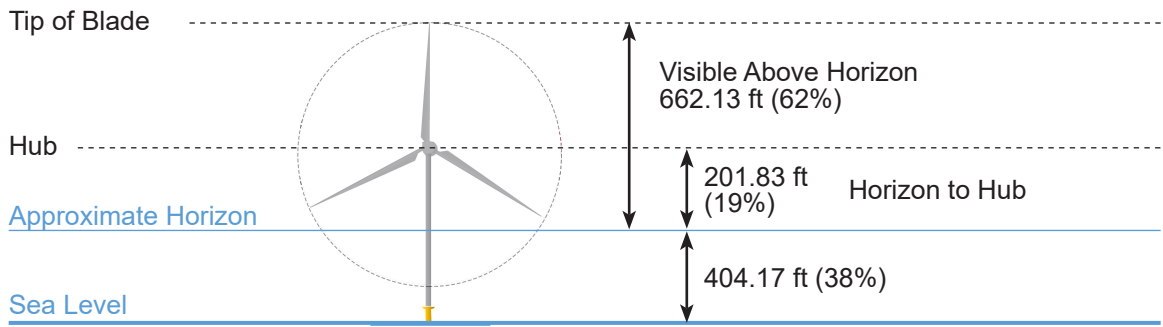
#### SITE MAP



#### PROJECT VIEW

Horizontal Field of View: 105°	Furthest WTG: 51.7 mi / 83.2 km
Vertical Field of View: 39.6°	Potential Number of WTGs Visible: 114
Nearest WTG: 31.2 mi / 50.2 km	Potential Number of WTGs Not Visible: 35

#### VISIBILITY OF CLOSEST TURBINE





# KOP 2-MV - Wasque Reservation

Martha's Vineyard

**SIMULATED CONDITIONS**



The page should viewed at 11" x 17" approximately 15" from viewer's eyes .



# KOP 3-MV - Wasque Ave

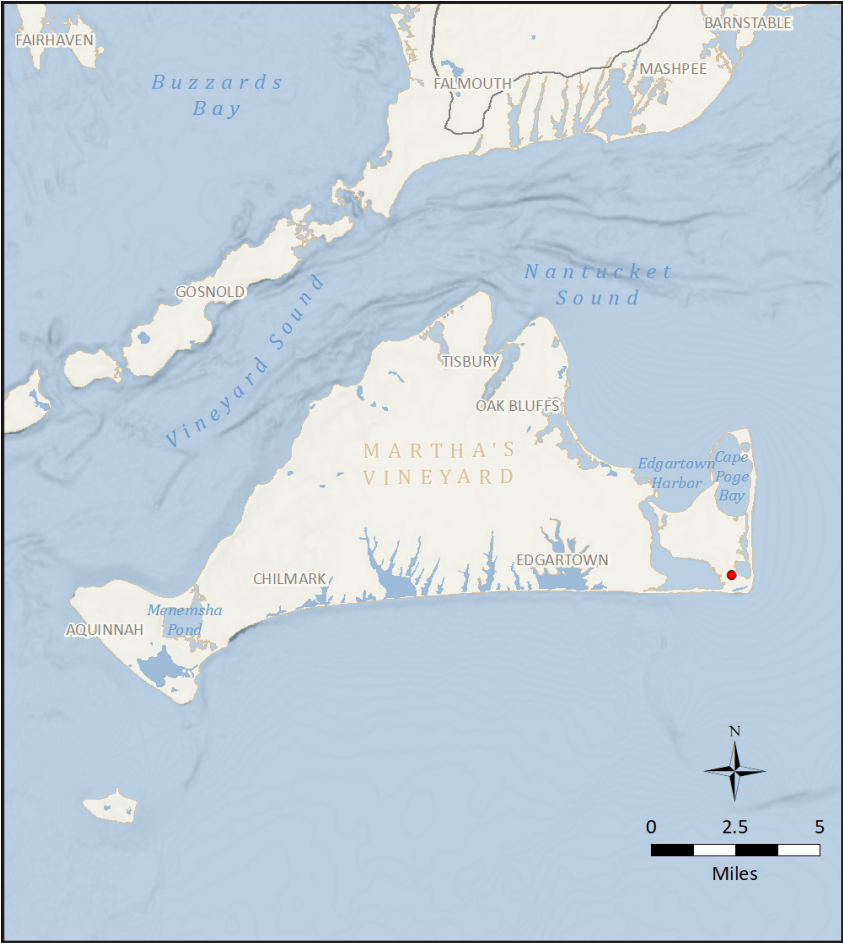
## Martha's Vineyard

### PANORAMIC PHOTOGRAPH - EXISTING CONDITIONS



This image should be viewed on a 24 inch monitor scaling the yellow square to 11" x 17" and pan the surrounding panoramic image maintaining the 11" x 17" size. The yellow area depicts the area on the following page.

### ISLAND MAP



### PHOTOGRAPH AND SITE

Time of photograph: 9:37 AM	Viewing direction: South (163°)
Date of photograph: 6-25-20	Latitude: 41.355645°N
L/SCA: Coastal Scrub, Rural/Residential, Open Ocean, Ocean Beach	Longitude: 70.461041°W
	Lighting Direction: Backlit diffused

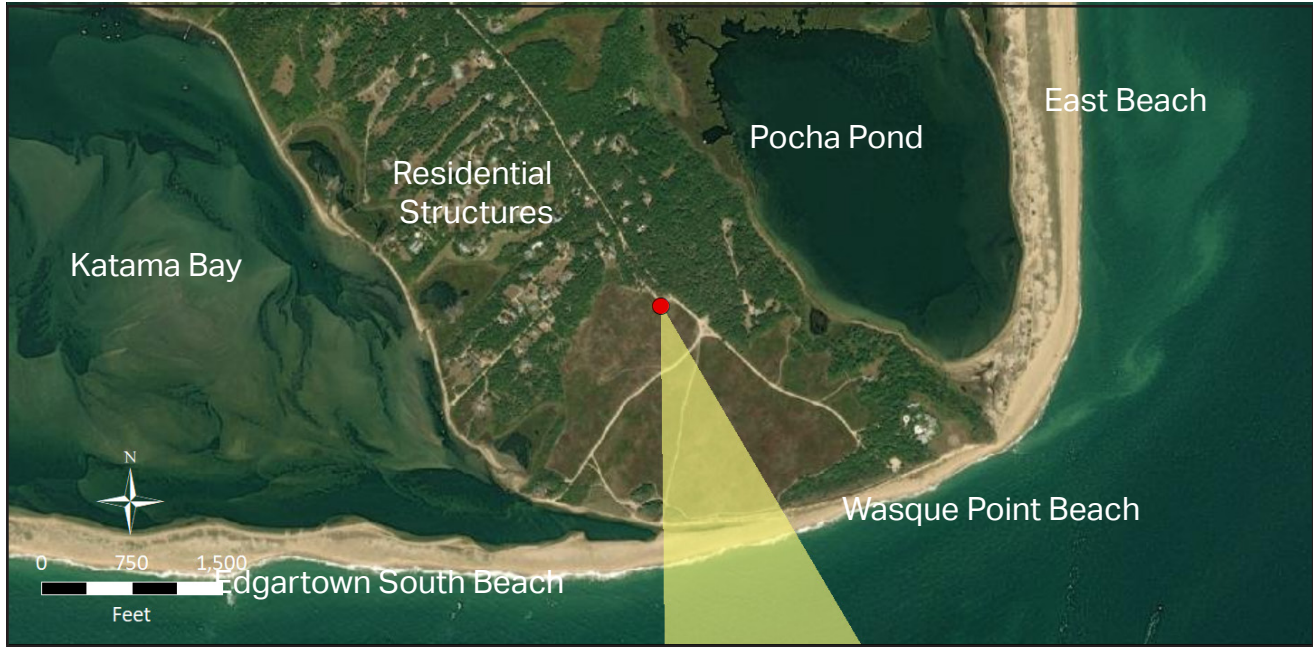
### ENVIRONMENT

Temperature: 78° F
Humidity: 58%
Wind Dir & Speed: SSW 14mph
Weather Condition: Cloudy

### CAMERA

Camera Elevation: 42.5ft / 13 m	Fstop: f/7.1
Nikon D4	Shutter: 1/1250 sec
Nikon 50mm	Aperture priority
ISO: 100	Exposure bias: -0.7 step

### CONTEXT MAP



### ADJACENT FEATURES

<b>Access:</b> Trustees of Reservation Property (access fee)
<b>Scenic Resources:</b> Scrub shrub landscape
<b>Adjacent Amentities:</b> Trustees of Reservation entry kiosk
<b>Adjacent Areas:</b> Pocha Pond, Wasque Point Beach, Edgartown South Beach, Katama Bay, East Beach, residential structures
<b>Adjacent L/SCAs:</b> Ocean beach, open ocean, coastal scrub bush, coastal dunes, bays and ponds, medium density residential structures
<b>Adjacent KOPs:</b> KOP 14-M Quammux Road, KOP 2-M Wasque Reservation, KOP 1-M Wasque Point



KOP 3-MV - Wasque Ave  
Martha's Vineyard

EXISTING CONDITIONS



The page should viewed at 11" x 17" approximately 15" from viewer's eyes .



# KOP 3-MV - Wasque Ave

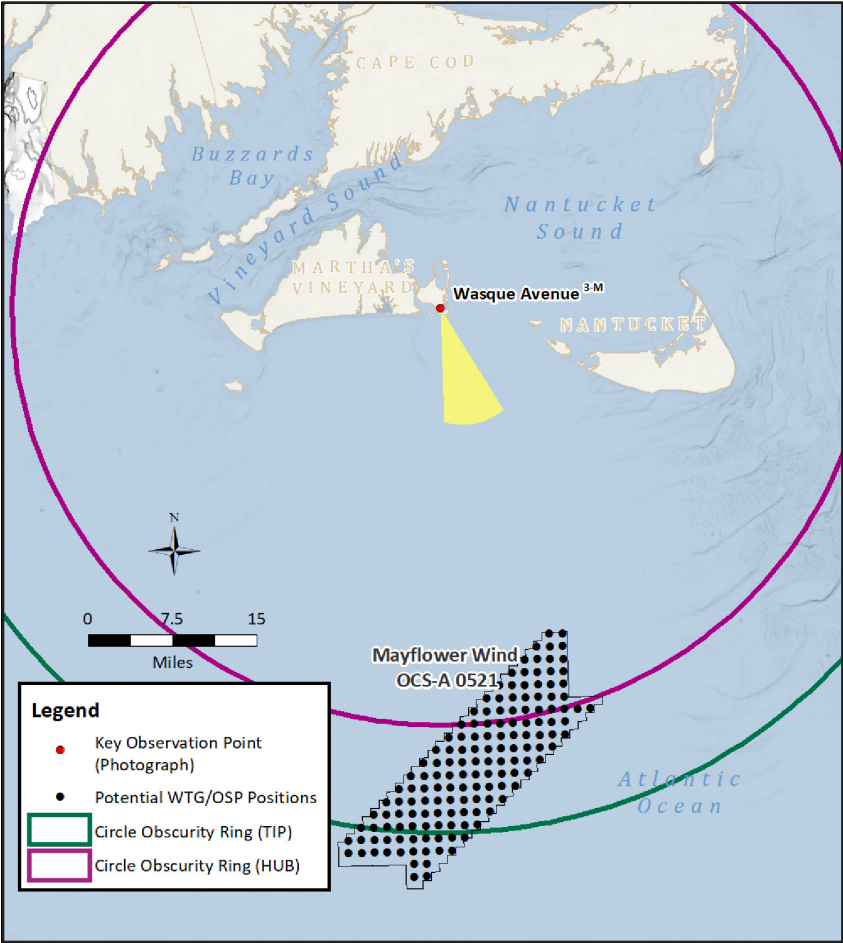
## Martha's Vineyard

### PANORAMIC PHOTOGRAPH - SIMULATED CONDITIONS



This image should be viewed on a 24 inch monitor scaling the yellow square to 11" x 17" and pan the surrounding panoramic image maintaining the 11" x 17" size. The yellow area depicts the area on the following page.

### REGIONAL MAP



### PHOTOGRAPH AND SITE

Time of photograph: 9:37 AM	Viewing direction: South (163°)
Date of photograph: 6-25-20	Latitude: 41.355645°N
L/SCA: Coastal Scrub, Rural/Residential, Open Ocean, Ocean Beach	Longitude: 70.461041°W
	Lighting Direction: Sidelit diffused

### SITE MAP



### ENVIRONMENT

Temperature: 78° F
Humidity: 58%
Wind Dir & Speed: SSW 14mph
Weather Condition: Cloudy

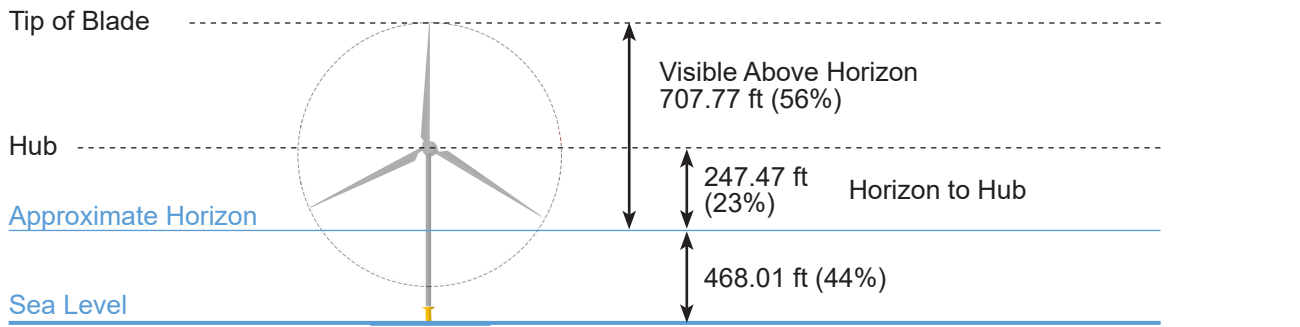
### CAMERA

Camera Elevation: 42.5ft / 13 m	Fstop: f/7.1
Nikon D4	Shutter: 1/1250 sec
Nikon 50mm	Aperture priority
ISO: 100	Exposure bias: -0.7 step

### PROJECT VIEW

Horizontal Field of View: 127°	Furthest WTG: 52.0 mi / 83.7 km
Vertical Field of View: 39.6°	Potential Number of WTGs Visible: 126
Nearest WTG: 31.6 mi / 50.9 km	Potential Number of WTGs Not Visible: 23

### VISIBILITY OF CLOSEST TURBINE





KOP 3-MV - Wasque Ave  
Martha's Vineyard

**SIMULATED CONDITIONS**





# KOP 4-MV - South Beach

## Martha's Vineyard

### PANORAMIC PHOTOGRAPH - EXISTING CONDITIONS



This image should be viewed on a 24 inch monitor scaling the yellow square to 11" x 17" and pan the surrounding panoramic image maintaining the 11" x 17" size. The yellow area depicts the area on the following page.

### ISLAND MAP



### PHOTOGRAPH AND SITE

Time of photograph: 10:26 AM	Viewing direction: South (156°)
Date of photograph: 6-25-20	Latitude: 41.349757°N
L/SCA: Open Ocean, Ocean Beach, Coastal Scrub, Rural/Residential	Longitude: 70.530786°W
	Lighting Direction: Backlit diffused

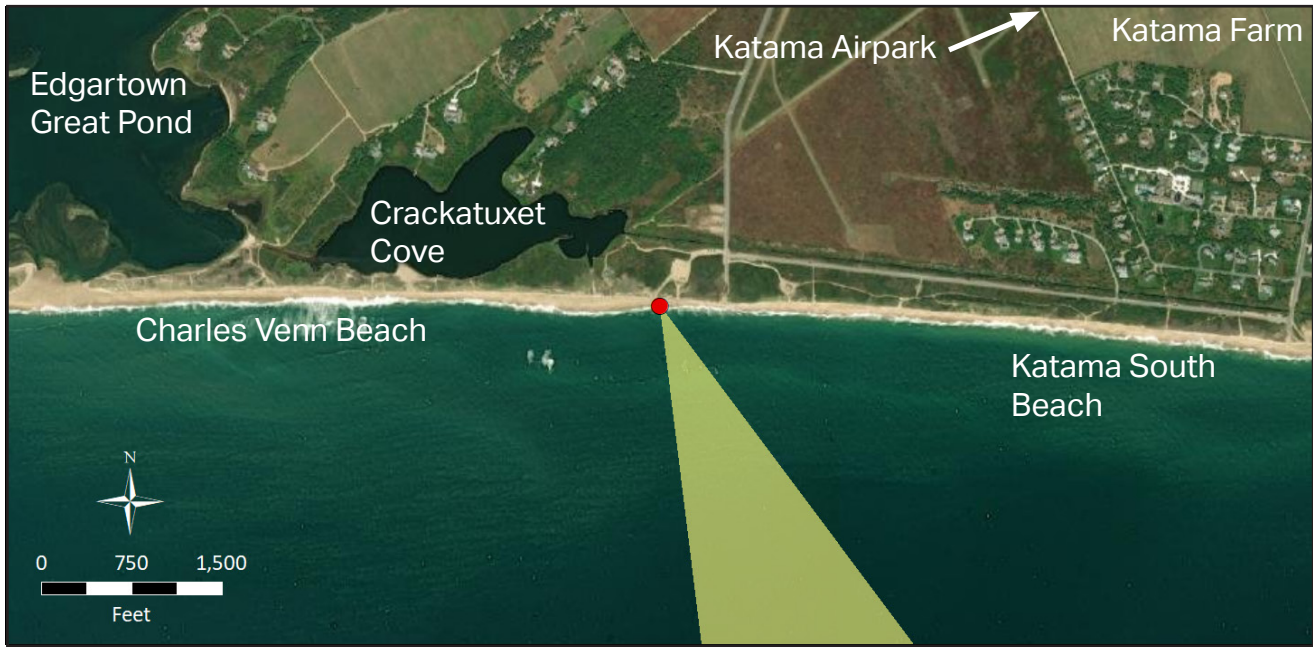
### ENVIRONMENT

Temperature: 78° F
Humidity: 58%
Wind Dir & Speed: SW 18mph
Weather Condition: Cloudy

### CAMERA

Camera Elevation: 22.5ft / 6.9 m	Fstop: f/7.1
Nikon D4	Shutter: 1/1250 sec
Nikon 50mm	Aperture priority
ISO: 100	Exposure bias: -0.7 step

### CONTEXT MAP



### ADJACENT FEATURES

<b>Access:</b> Public beach recreation
<b>Scenic Resources:</b> Ocean beach, coastal dunes, open ocean, scrub scrub landscape
<b>Adjacent Amentities:</b> Hotel, restaurants, public restroom and changing facilities
<b>Adjacent Areas:</b> Katama Farm, Katama Airpark, Charles Venn Beach, Norton Point Beach, Katama Bay, residential homes
<b>Adjacent L/SCAs:</b> Ocean beach, coastal dunes, coastal scrub bush, medium density residential structures, agricultural/open fields
<b>Adjacent KOPs:</b> KOP 5-M Wilson's Landing, KOP 12-M Katama Point Public Boat Launch, KOP 6-M Long Point Beach
<b>Comparable KOPs:</b> KOP 7-N Low Beach



# KOP 4-MV - South Beach

Martha's Vineyard

EXISTING CONDITIONS



The page should viewed at 11" x 17" approximately 15" from viewer's eyes .



# KOP 4-MV - South Beach

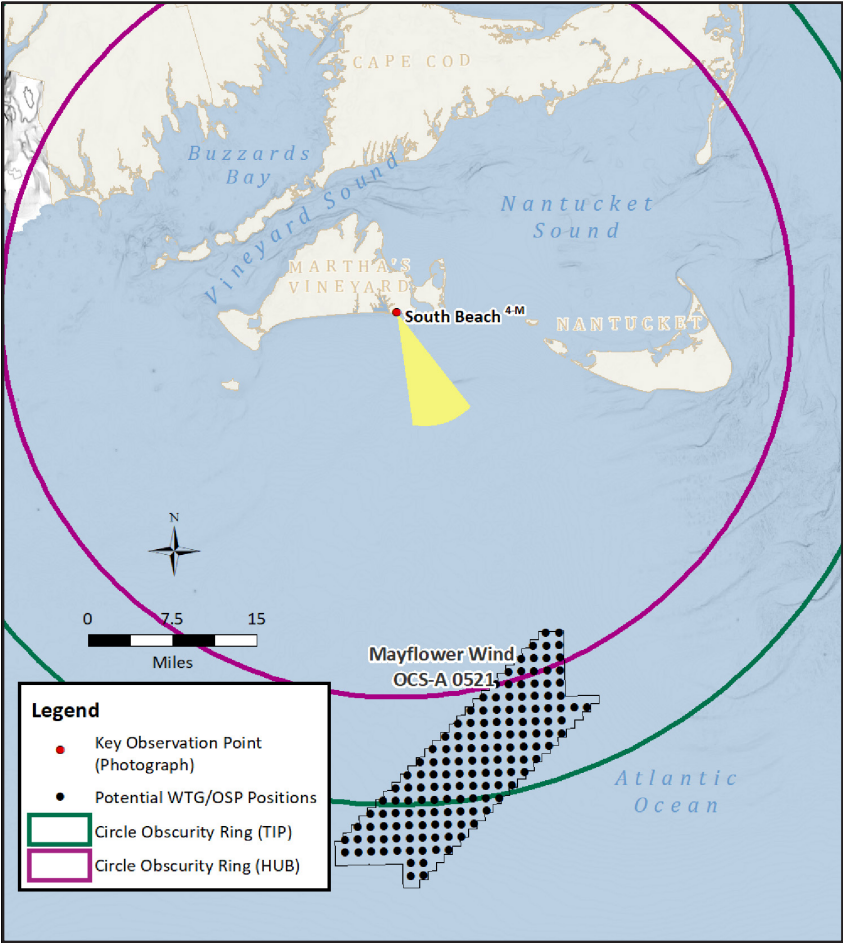
## Martha's Vineyard

### PANORAMIC PHOTOGRAPH - SIMULATED CONDITIONS



This image should be viewed on a 24 inch monitor scaling the yellow square to 11" x 17" and pan the surrounding panoramic image maintaining the 11" x 17" size. The yellow area depicts the area on the following page.

### REGIONAL MAP



### PHOTOGRAPH AND SITE

Time of photograph: 10:26 AM	Viewing direction: South (156°)
Date of photograph: 6-25-20	Latitude: 41.349757°N
L/SCA: Open Ocean, Ocean Beach, Coastal Scrub, Rural/Residential	Longitude: 70.530786°W
	Lighting Direction: Sidelit diffused

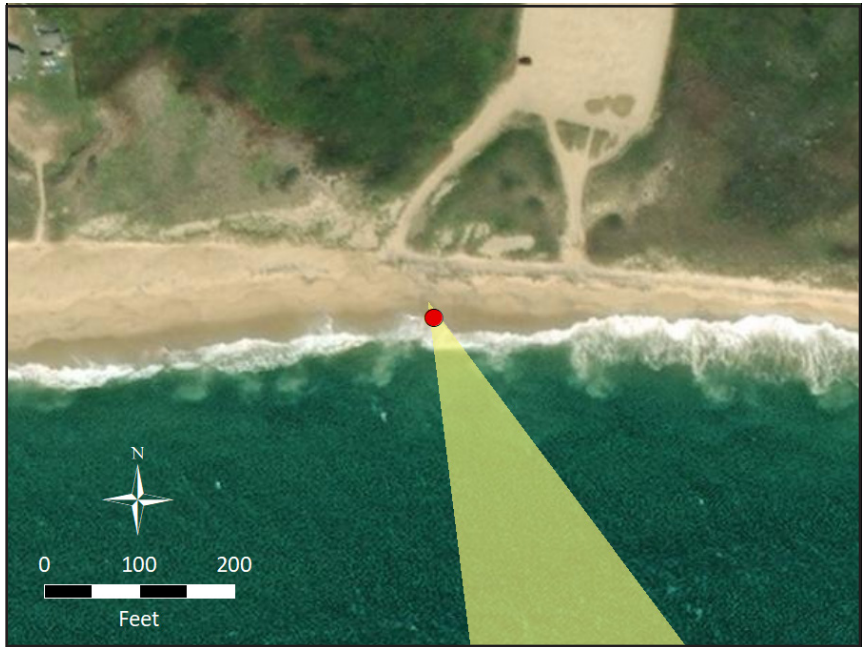
### ENVIRONMENT

Temperature: 78° F
Humidity: 58%
Wind Dir & Speed: SW 18mph
Weather Condition: Cloudy

### CAMERA

Camera Elevation: 22.5ft / 6.9 m	Fstop: f/7.1
Nikon D4	Shutter: 1/1250 sec
Nikon 50mm	Aperture priority
ISO: 100	Exposure bias: -0.7 step

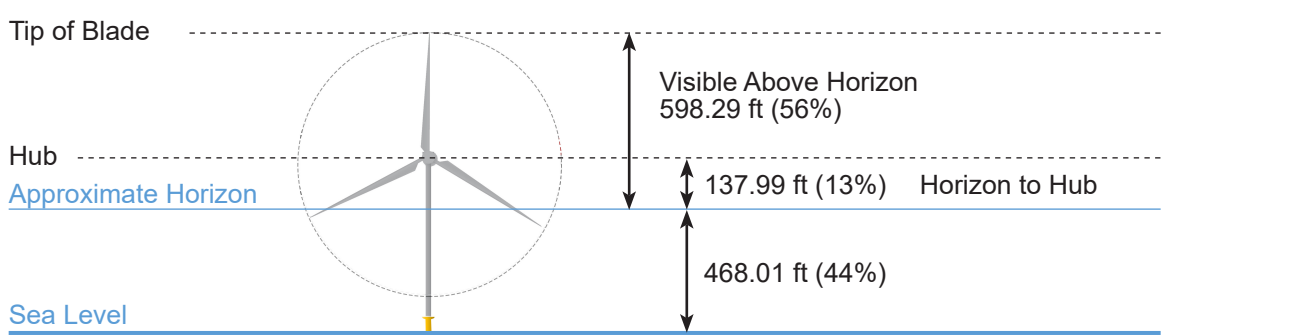
### SITE MAP



### PROJECT VIEW

Horizontal Field of View: 127°	Furthest WTG: 51.7 mi / 83.2 km
Vertical Field of View: 39.6°	Potential Number of WTGs Visible: 104
Nearest WTG: 32.5 mi / 52.3 km	Potential Number of WTGs Not Visible: 45

### VISIBILITY OF CLOSEST TURBINE





# KOP 4-MV - South Beach

Martha's Vineyard

**SIMULATED CONDITIONS**



The page should viewed at 11" x 17" approximately 15" from viewer's eyes .



# KOP 6-MV - Long Point Beach

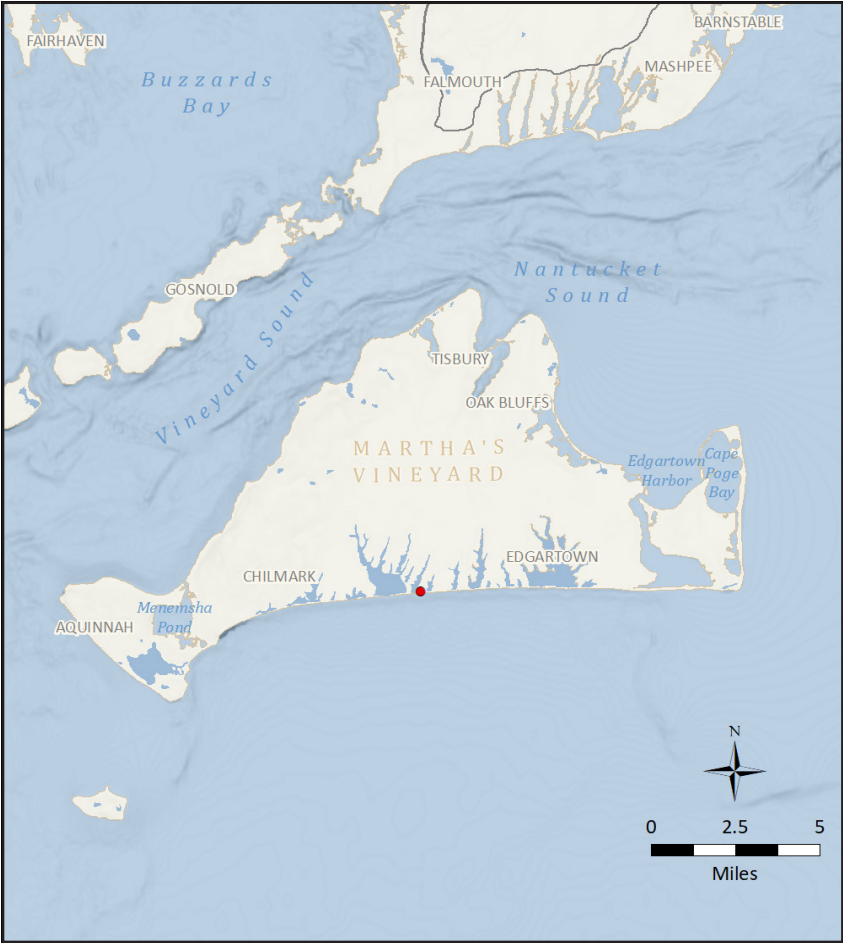
## Martha's Vineyard

### PANORAMIC PHOTOGRAPH - EXISTING CONDITIONS



This image should be viewed on a 24 inch monitor scaling the yellow square to 11" x 17" and pan the surrounding panoramic image maintaining the 11" x 17" size. The yellow area depicts the area on the following page.

### ISLAND MAP



### PHOTOGRAPH AND SITE

Time of photograph: 12:23 AM	Viewing direction: South (148°)
Date of photograph: 6-25-20	Latitude: 41.348779°N
L/SCA: Open Ocean, Ocean Beach, Coastal Scrub, Salt Ponds/TidalMarsh	Longitude: 70.632809°W
	Lighting Direction: Backlit diffused

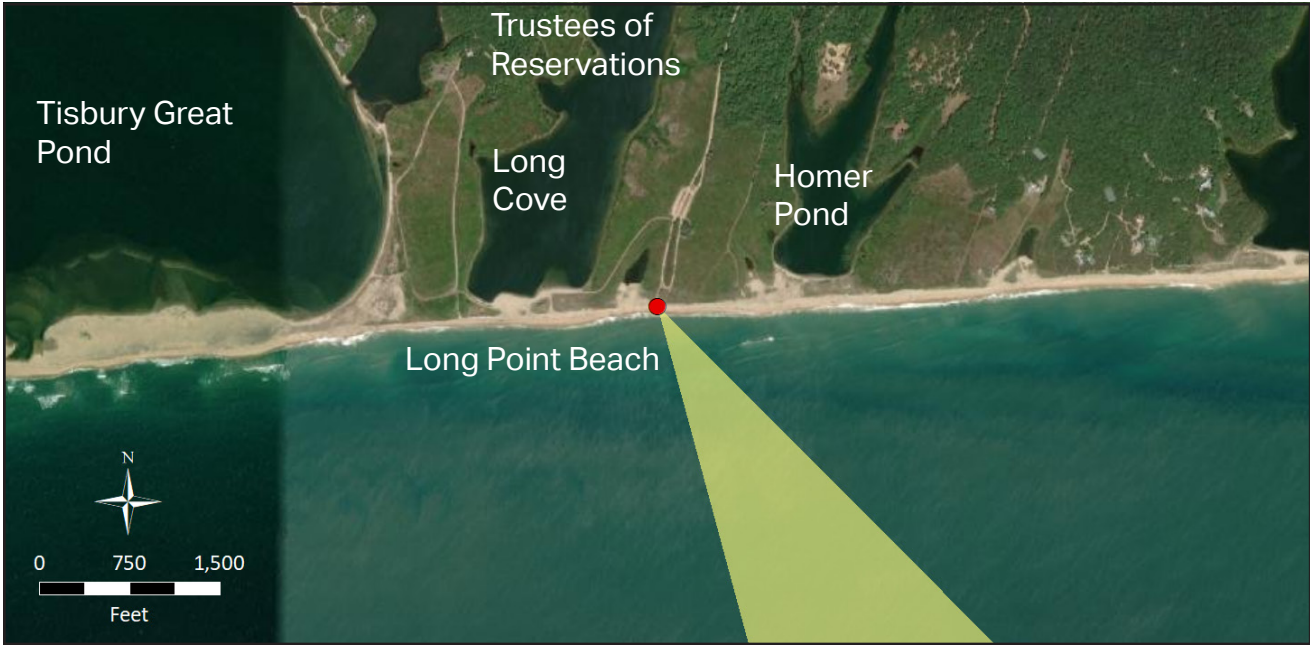
### ENVIRONMENT

Temperature: 77° F
Humidity: 71%
Wind Dir & Speed: SSW 12mph
Weather Condition: Cloudy

### CAMERA

Camera Elevation: 18.5 ft / 5.7 m	Fstop: f/7.1
Nikon D4	Shutter: 1/1250 sec
Nikon 50mm	Aperture priority
ISO: 100	Exposure bias: -0.7 step

### CONTEXT MAP



### ADJACENT FEATURES

<b>Access:</b> Public beach recreation
<b>Scenic Resources:</b> Ocean beach, coastal dunes, open ocean
<b>Adjacent Amentities:</b> Small parking lot
<b>Adjacent Areas:</b> Trustees of reservation land, multiple coves and ponds
<b>Adjacent L/SCAs:</b> Ocean beach, coastal dunes, coastal scrub bush, forested woodlands, ponds and coves, very low density residential structures
<b>Adjacent KOPs:</b> KOP 7-M Tississa Pond, KOP 8-M Tississa Pond Hiking Trail, KOP 4-M South Beach



# KOP 6-MV - Long Point Beach

Martha's Vineyard

**EXISTING CONDITIONS**



The page should viewed at 11" x 17" approximately 15" from viewer's eyes .



# KOP 6-MV - Long Point Beach

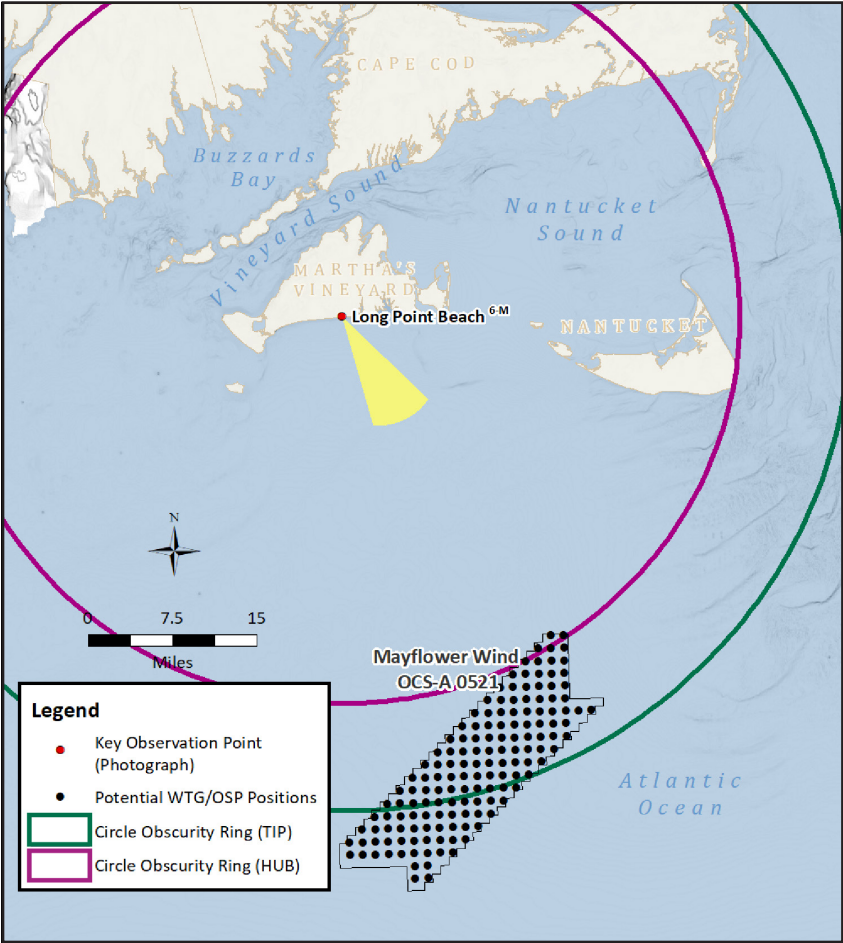
## Martha's Vineyard

### PANORAMIC PHOTOGRAPH - SIMULATED CONDITIONS



This image should be viewed on a 24 inch monitor scaling the yellow square to 11" x 17" and pan the surrounding panoramic image maintaining the 11" x 17" size. The yellow area depicts the area on the following page.

#### REGIONAL MAP



#### PHOTOGRAPH AND SITE

Time of photograph: 12:23 AM	Viewing direction: South (148°)
Date of photograph: 6-25-20	Latitude: 41.348779°N
L/SCA: Open Ocean, Ocean Beach, Coastal Scrub, Salt Ponds/TidalMarsh	Longitude: 70.632809°W
	Lighting Direction: Backlit diffused

#### ENVIRONMENT

Temperature: 77° F
Humidity: 71%
Wind Dir & Speed: SSW 12mph
Weather Condition: Cloudy

#### CAMERA

Camera Elevation: 18.5 ft / 5.7 m	Fstop: f/7.1
Nikon D4	Shutter: 1/1250 sec
Nikon 50mm	Aperture priority
ISO: 100	Exposure bias: -0.7 step

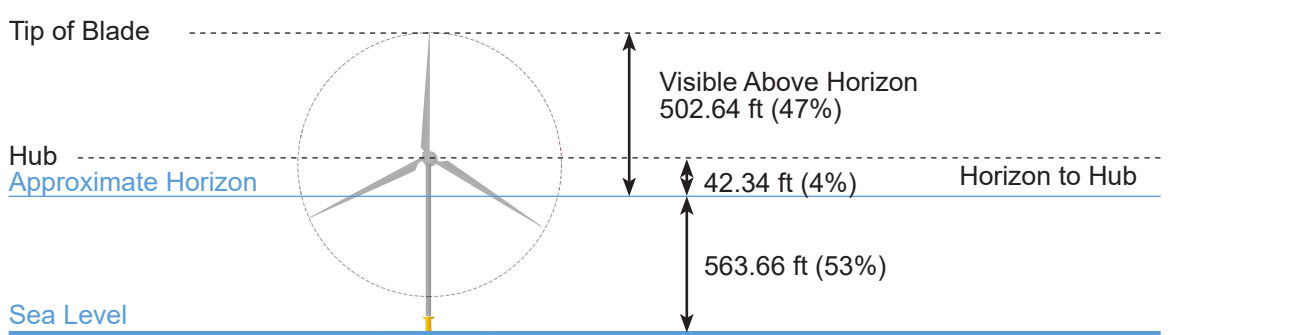
#### SITE MAP



#### PROJECT VIEW

Horizontal Field of View: 127°	Furthest WTG: 51.49 mi
Vertical Field of View: 39.6°	Potential Number of WTGs Visible: 99
Nearest WTG: 34.9 mi / 56.2 km	Potential Number of WTGs Not Visible: 50

#### VISIBILITY OF CLOSEST TURBINE





# KOP 6-MV - Long Point Beach

Martha's Vineyard

**SIMULATED CONDITIONS**



The page should viewed at 11" x 17" approximately 15" from viewer's eyes .



# KOP 9-MV - 322 South Road

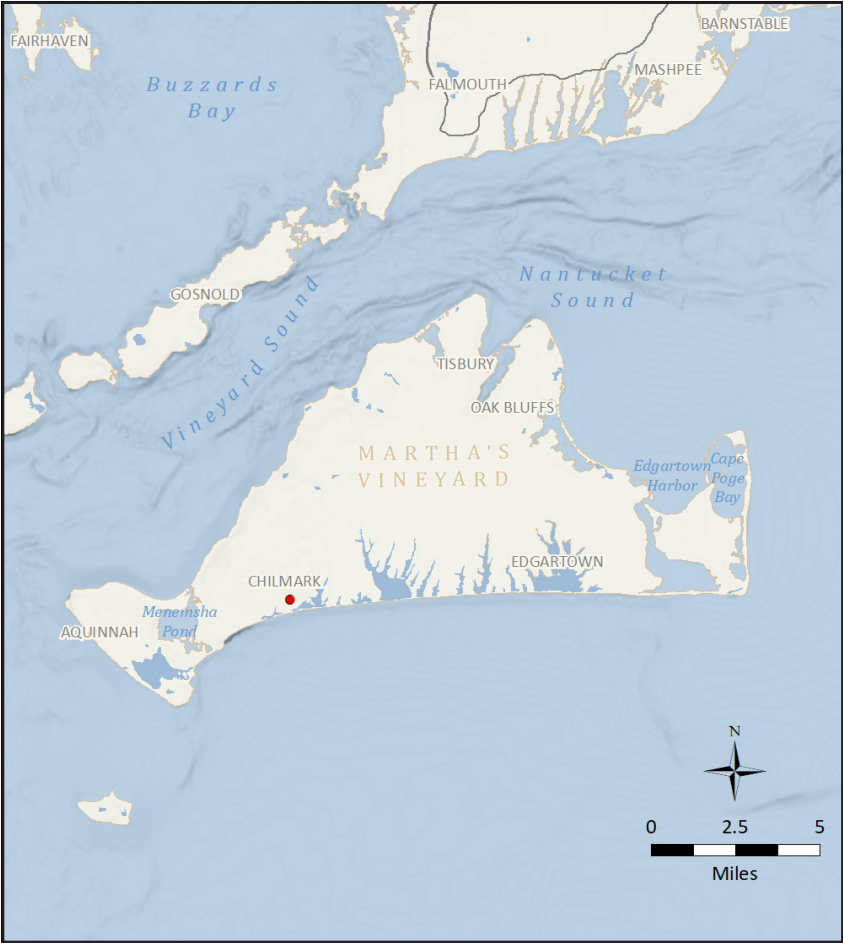
## Martha's Vineyard

### PANORAMIC PHOTOGRAPH - EXISTING CONDITIONS



This image should be viewed on a 24 inch monitor scaling the yellow square to 11" x 17" and pan the surrounding panoramic image maintaining the 11" x 17" size. The yellow area depicts the area on the following page.

### ISLAND MAP



### PHOTOGRAPH AND SITE

Time of photograph: 4:17 PM	Viewing direction: Southeast (143°)
Date of photograph: 6-25-20	Latitude: 41.347932°N
L/SCA: Open Ocean, Coastal Scrub, Forests/Woodland, Dunes, Tidal Marsh	Longitude: 70.710104°W
	Lighting Direction: Sidelit diffused

### ENVIRONMENT

Temperature: 79° F
Humidity: 64%
Wind Dir & Speed: SSW 10mph
Weather Condition: Hazy

### CAMERA

Camera Elevation: 85.0 ft / 26 m	Fstop: f/7.1
Nikon D4	Shutter: 1/1250 sec
Nikon 50mm	Aperture priority
ISO: 100	Exposure bias: -0.7 step

### CONTEXT MAP



### ADJACENT FEATURES

<b>Access:</b> Public road
<b>Scenic Resources:</b> Forested woodlands, open ocean, scrub shrub landscape, coastal dunes, tidal marsh
<b>Adjacent Amentities:</b> Chilmark town center
<b>Adjacent Areas:</b> Abel Hill Cemetery, Chilmark Pond, residential homes, Fulling Mill Brook Conservation Area
<b>Adjacent L/SCAs:</b> Forested woodlands, tidal ponds, ocean beach, open ocean, coastal scrub bush, medium density residential structures
<b>Adjacent KOPs:</b> KOP 7-M Tississa Pond, KOP 8-M Tississa Pond Hiking Trail, KOP 23-M 421 Allen Farm South Road, KOP 13-M Lucy Vincent Beach, KOP 10-M BarnHouse/Skiff-Mayhew (Vincent House)



KOP 9-MV - 322 South Road  
Martha's Vineyard

EXISTING CONDITIONS



The page should viewed at 11" x 17" approximately 15" from viewer's eyes .



# KOP 9-MV - 322 South Road

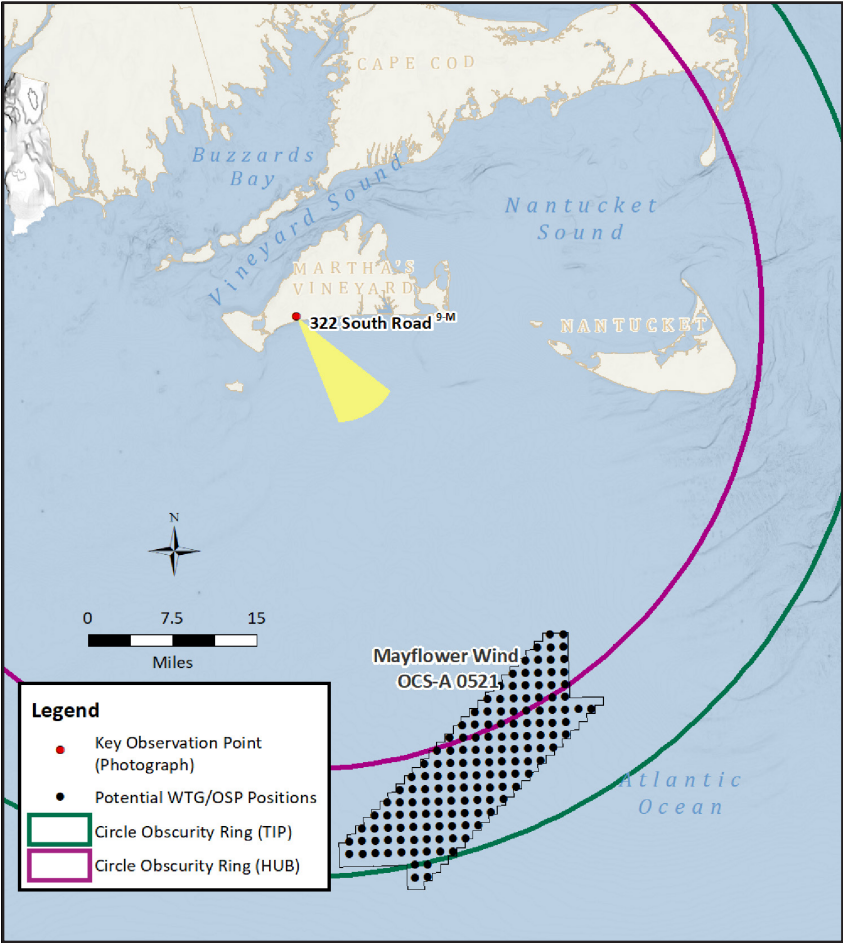
## Martha's Vineyard

### PANORAMIC PHOTOGRAPH - SIMULATED CONDITIONS



This image should be viewed on a 24 inch monitor scaling the yellow square to 11" x 17" and pan the surrounding panoramic image maintaining the 11" x 17" size. The yellow area depicts the area on the following page.

#### REGIONAL MAP



#### PHOTOGRAPH AND SITE

Time of photograph: 4:17 PM	Viewing direction: Southeast (143°)
Date of photograph: 6-25-20	Latitude: 41.347932°N
L/SCA: Open Ocean, Coastal Scrub, Forests/Woodland, Dunes, Tidal Marsh	Longitude: 70.710104°W
	Lighting Direction: Sidelit diffused

#### SITE MAP



#### ENVIRONMENT

Temperature: 79° F
Humidity: 64%
Wind Dir & Speed: SSW 10mph
Weather Condition: Hazy

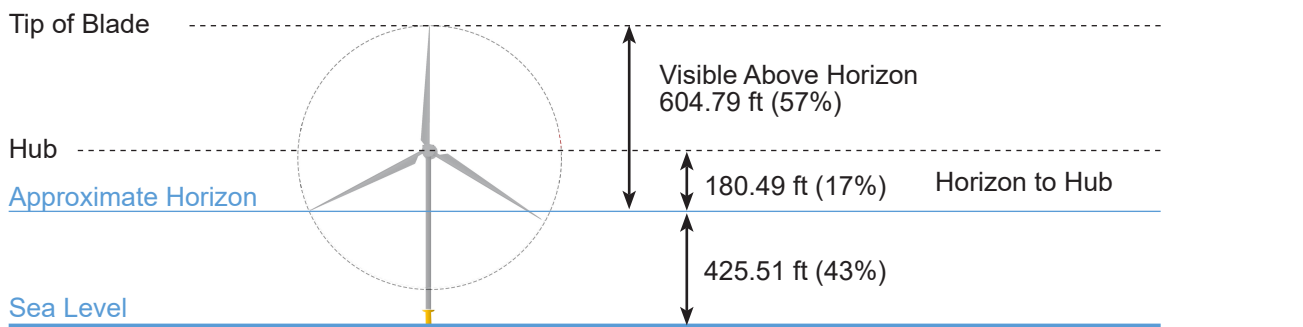
#### CAMERA

Camera Elevation: 85.0 ft / 26 m	Fstop: f/7.1
Nikon D4	Shutter: 1/1250 sec
Nikon 50mm	Aperture priority
ISO: 100	Exposure bias: -0.7 step

#### PROJECT VIEW

Horizontal Field of View: 60°	Furthest WTG: 52.4 mi / 84.4 km
Vertical Field of View: 39.6°	Potential Number of WTGs Visible: 145
Nearest WTG: 37.2 mi / 59.8 km	Potential Number of WTGs Not Visible: 4

#### VISIBILITY OF CLOSEST TURBINE





KOP 9-MV - 322 South Road  
Martha's Vineyard

**SIMULATED CONDITIONS**



The page should viewed at 11" x 17" approximately 15" from viewer's eyes .



# KOP 16-MV - Squibnocket Beach

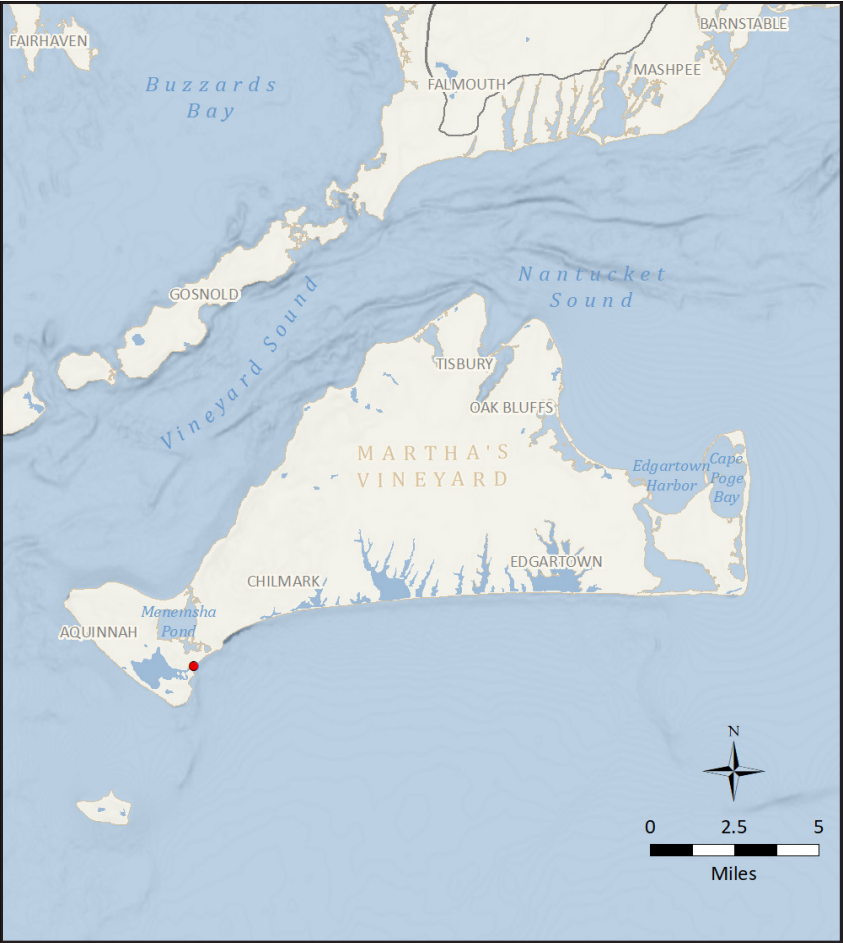
## Martha's Vineyard

### PANORAMIC PHOTOGRAPH - EXISTING CONDITIONS



This image should be viewed on a 24 inch monitor scaling the yellow square to 11" x 17" and pan the surrounding panoramic image maintaining the 11" x 17" size. The yellow area depicts the area on the following page.

### ISLAND MAP



### PHOTOGRAPH AND SITE

Time of photograph: 2:08 PM	Viewing direction: Southeast (137°)
Date of photograph: 11-6-20	Latitude: 41.318873°N
L/SCA: Ocean Beach, Open Ocean	Longitude: 70.764908°W
	Lighting Direction: Sidelit diffused

### ENVIRONMENT

Temperature: 65° F
Humidity: 78%
Wind Dir & Speed: SSW 16mph
Weather Condition: Hazy

### CAMERA

Camera Elevation: 16.5 ft / 5.0 m	Fstop: f/7.1
Nikon D4	Shutter: 1/1250 sec
Nikon 50mm	Aperture priority
ISO: 100	Exposure bias: -0.7 step

### CONTEXT MAP



### ADJACENT FEATURES

<b>Access:</b> Public beach recreation
<b>Scenic Resources:</b> Ocean beach, open ocean, coastal dunes
<b>Adjacent Amentities:</b> Parking lot
<b>Adjacent Areas:</b> Squibnocket Pond, Nashaquista Cliffs, Squibnocket Point, residential structures
<b>Adjacent L/SCAs:</b> Ocean beach, open ocean, coastal scrub bush, coastal dunes, bays and ponds, medium density residential structures
<b>Adjacent KOPs:</b> KOP-MV04 BarnHouse/Skiff-Mayhew Vincent House, KOP-MV19 Chilmark General Store, KOP-MV20 Moshup Trail
<b>Similar KOPs without SIMs:</b> KOP 13-M Lucy Vincent Beach



KOP 16-MV - Squibnocket Beach  
Martha's Vineyard

EXISTING CONDITIONS



The page should viewed at 11" x 17" approximately 15" from viewer's eyes .



# KOP 16-MV - Squibnocket Beach

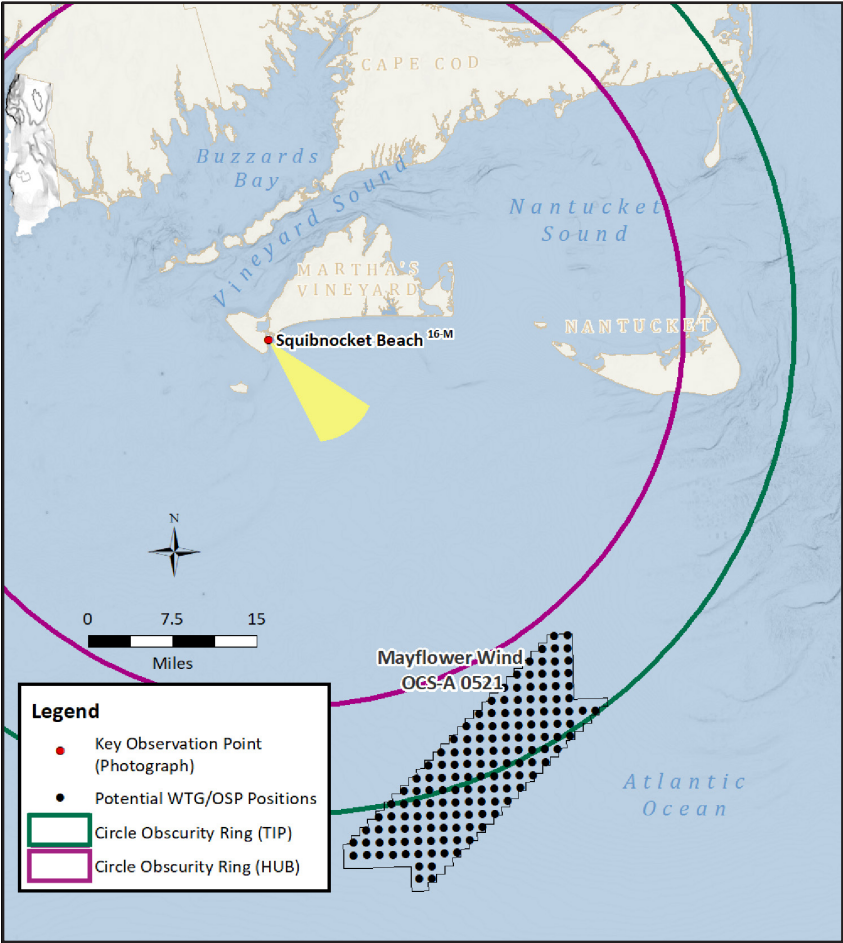
## Martha's Vineyard

### PANORAMIC PHOTOGRAPH - SIMULATED CONDITIONS



This image should be viewed on a 24 inch monitor scaling the yellow square to 11" x 17" and pan the surrounding panoramic image maintaining the 11" x 17" size. The yellow area depicts the area on the following page.

#### REGIONAL MAP



#### PHOTOGRAPH AND SITE

Time of photograph: 2:08 PM	Viewing direction: Southeast (137°)
Date of photograph: 11-6-20	Latitude: 41.318873°N
L/SCA: Ocean Beach, Open Ocean	Longitude: 70.764908°W
	Lighting Direction: Sidelit diffused

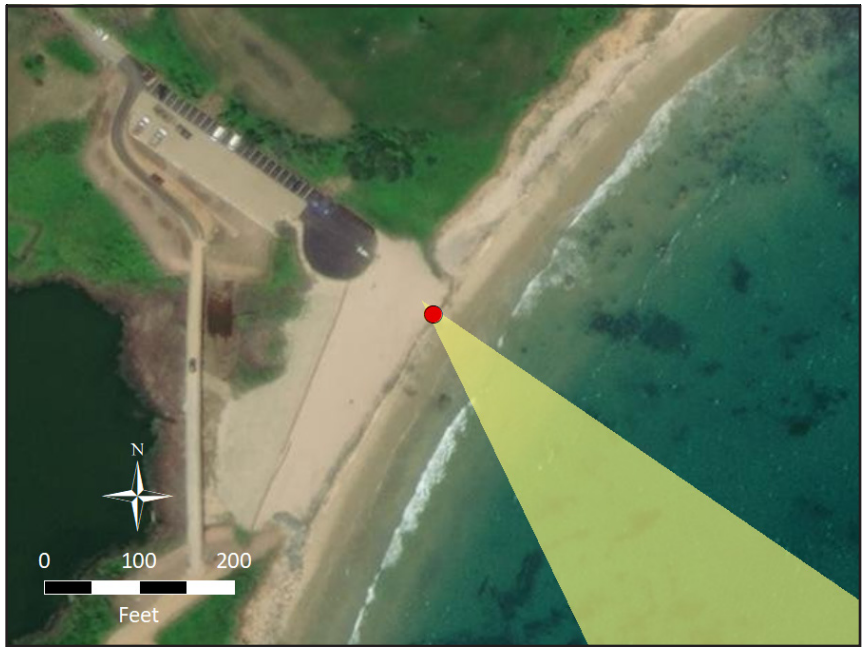
#### ENVIRONMENT

Temperature: 65° F
Humidity: 78%
Wind Dir & Speed: SSW 16mph
Weather Condition: Hazy

#### CAMERA

Camera Elevation: 16.5 ft / 5.0 m	Fstop: f/7.1
Nikon D4	Shutter: 1/1250 sec
Nikon 50mm	Aperture priority
ISO: 100	Exposure bias: -0.7 step

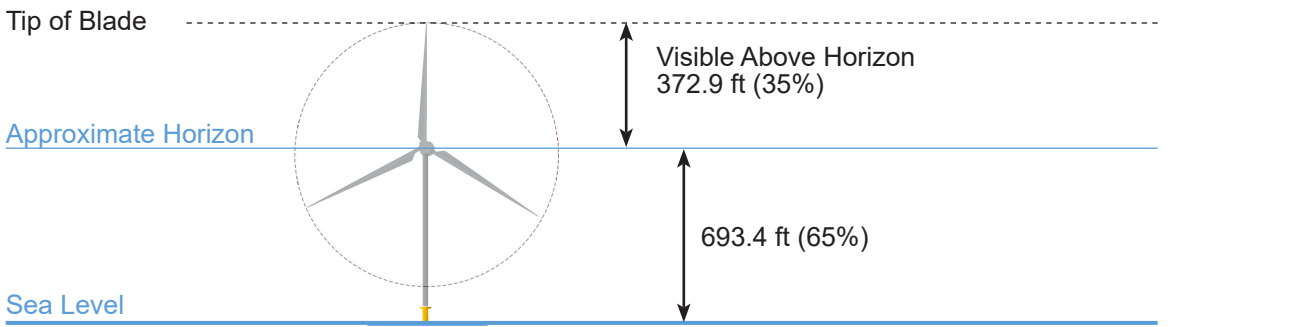
#### SITE MAP



#### PROJECT VIEW

Horizontal Field of View: 127°	Furthest WTG: 51.49 mi
Vertical Field of View: 39.6°	Potential Number of WTGs Visible: 68
Nearest WTG: 37.5 mi	Potential Number of WTGs Not Visible: 81

#### VISIBILITY OF CLOSEST TURBINE





# KOP 16-MV - Squibnocket Beach

Martha's Vineyard

**SIMULATED CONDITIONS**



The page should viewed at 11" x 17" approximately 15" from viewer's eyes .