



**PROGRESS REPORT FOR OCS-A 0539**  
**NOVEMBER 1, 2022, TO APRIL 30, 2023**

Original Submission Date: 04/28/2023

Version: 0

Prepared Pursuant to Lease Addendum C Section 3

Prepared by: Community Offshore Wind, LLC

## Executive Summary

Since the submittal of the previous Progress Report on October 31, 2022, Community Offshore Wind has continued the development of Lease Area OCS-A 0539 in a responsible manner. This includes continued engagement with Tribes/Tribal Nations, commercial and recreational fisheries, federal and state agencies, and all other stakeholders to (re)introduce the Project and Project team, to provide an overview of Project, and to solicit feedback. We have also continued to update our Fisheries, Native American Tribes, and Agency Communications Plans, as required by Lease Stipulation 3.1.2 (see Appendix C for additional detail), based on received feedback.

A summary of the engagement activities held with Tribes/Tribal Nations is provided in Section 2, below. A summary of stakeholder engagement is provided in Section 3, with Fisheries engagement presented in Section 3.1, Agency engagement presented in Section 3.2, and other stakeholder engagement presented in Section 3.3. Community Offshore Wind also commenced our site characterization and survey strategy, which will support the continued development of the Project, with additional information provided in Section 4.

For additional information on the Community Offshore Wind Project, and to sign-up for our monthly newsletter, please visit our website: <https://communityoffshorewind.com/>

## Table of Contents

|          |  |           |
|----------|--|-----------|
| <b>1</b> | <b>Purpose and Background .....</b>  | <b>1</b>  |
| 1.1      | <i>Purpose.....</i>  | 1         |
| 1.2      | <i>Lessee Information.....</i>   | 1         |
| 1.3      | <i>Lease Description.....</i>  | 1         |
| <b>2</b> | <b>Tribes/Tribal Nations Engagement .....</b>  | <b>3</b>  |
| 2.1      | <i>Overall Tribes/Tribal Nations Engagement Progress Since Last Report.....</i>                    | 3         |
| 2.2      | <i>Identification of Potential Project Effects Related to Tribes/Tribal Nations Interests.....</i> | 5         |
| 2.3      | <i>Tribes/Tribal Nations Feedback on Transmission Planning.....</i>                                | 5         |
| 2.4      | <i>Anticipated or Scheduled Tribes/Tribal Nations Engagement Activities .....</i>                  | 5         |
| <b>3</b> | <b>Engagement with Potentially Affected Parties .....</b>  | <b>6</b>  |
| 3.1      | <i>Summary of Commercial and Recreational Fisheries Engagement Activities.....</i>                 | 6         |
| 3.1.1    | <i>Overall Engagement Progress Since Last Report.....</i>  | 6         |
| 3.1.2    | <i>Identification of Potential Project Effects Related to Parties.....</i>                         | 7         |
| 3.1.3    | <i>Feedback from Parties on Transmission Planning.....</i>   | 7         |
| 3.1.4    | <i>Anticipated or Scheduled Engagement Activities .....</i>  | 14        |
| 3.2      | <i>Summary of Agency Engagement Activities.....</i>  | 14        |
| 3.2.1    | <i>Overall Engagement Progress Since Last Report.....</i>  | 14        |
| 3.2.2    | <i>Identification of Potential Project Effects Related to Parties.....</i>                         | 15        |
| 3.2.3    | <i>Feedback from Parties on Transmission Planning.....</i>   | 15        |
| 3.2.4    | <i>Anticipated or Scheduled Engagement Activities .....</i>  | 15        |
| 3.3      | <i>Summary of Other Stakeholder Engagement Activities.....</i>                                     | 16        |
| 3.3.1    | <i>Overall Engagement Progress Since Last Report.....</i>  | 16        |
| 3.3.2    | <i>Identification of Potential Project Effects Related to Parties.....</i>                         | 16        |
| 3.3.3    | <i>Feedback from Parties on Transmission Planning.....</i>   | 21        |
| 3.3.4    | <i>Anticipated or Scheduled Engagement Activities .....</i>  | 21        |
| <b>4</b> | <b>Survey Plan(s) Activities.....</b>  | <b>22</b> |

## Tables

|         |  |    |
|---------|--|----|
| Table 1 | Tribes/Tribal Nations Engagement During Reporting Period .....   | 4  |
| Table 2 | Engagement with Commercial and Recreational Fisheries Participants and Stakeholders<br>During Reporting Period ..... | 8  |
| Table 3 | Engagement with Agencies During Reporting Period.....  | 15 |
| Table 4 | Engagement with Other Parties During Reporting Period.....   | 17 |
| Table 5 | Survey Plan Activities under BOEM Review or Underway.....  | 23 |

## Figures

|          |                             |   |
|----------|-----------------------------|---|
| Figure 1 | Lease Area OCS-A 0539 ..... | 2 |
|----------|-----------------------------|---|

## List of Appendices

**Appendix A Tribes and Other Parties Relevant to the Project**

**Appendix B Lessee and Liaison Contact Information**

**Appendix C Communications Plans**

## Acronyms and Abbreviations

|       |   |
|-------|---|
| BOEM  | Bureau of Ocean Energy Management               |
| COP   | Construction and Operations Plan                |
| DoD   | Department of Defense                           |
| EMF   | electromagnetic fields                          |
| ENGO  | environmental non-governmental organization     |
| Km    | kilometers                                      |
| mi    | miles   |
| MLLW  | Mean Low Low Water                              |
| NATCP | Native American Tribal Communications Plan      |
| Nm    | nautical miles                                  |
| NOAA  | National Oceanic and Atmospheric Administration |
| NPS   | National Park Service                           |
| OCS   | outer continental shelf                         |
| PSO   | protected species observer                      |
| ROSA  | Responsible Offshore Science Alliance           |
| RWSC  | Regional Wildlife Science Collaborative         |
| USACE | US Army Corps of Engineers                      |
| USCG  | U.S. Coast Guard                                |
| USFWS | US Fish and Wildlife Service                    |

## **1 Purpose and Background**

### **1.1 Purpose**

In accordance with Lease Stipulation 3.1, Community Offshore Wind must submit a Progress Report to BOEM every six months, through approval of the Construction and Operations Plan (COP). This report covers the second six-month period, from the Effective Date on the Lease on November 1, 2022, to April 30, 2023. The purpose of this Progress Report is to document overall project progress and engagement activities undertaken with Native American Tribes (“Tribes”), communities, ocean user groups, the general public, and other stakeholder groups throughout the reporting period, in addition to Community Offshore Wind’s plans for continued engagement.

### **1.2 Lessee Information**

Community Offshore Wind, LLC, a joint venture of RWE and National Grid, proposes to develop the Community Offshore Wind Project (the Project), under the Bureau of Ocean Energy Management (BOEM) Commercial Lease of Submerged Lands for Renewable Energy Development on the Outer Continental Shelf (Lease Area OCS-A 0539; Lease Area).

Additional information about Community Offshore Wind can be found on our website: <https://communityoffshorewind.com/>.

### **1.3 Lease Description**

Lease Area OCS-A 0539 encompasses approximately 125,964 acres and is located approximately 37 miles (mi; 59 kilometers [km]), 32 nautical miles [nm]) offshore of Little Egg Harbor, New Jersey and approximately 64 mi (104 km, 56 nm) offshore of Fire Island, New York. Water depths within the Lease Area range from 98 feet to 171 feet (30 meters to 52 meters) mean lower low water (MLLW). The location of Lease Area OCS-A 0539 is shown on Figure 1, below.

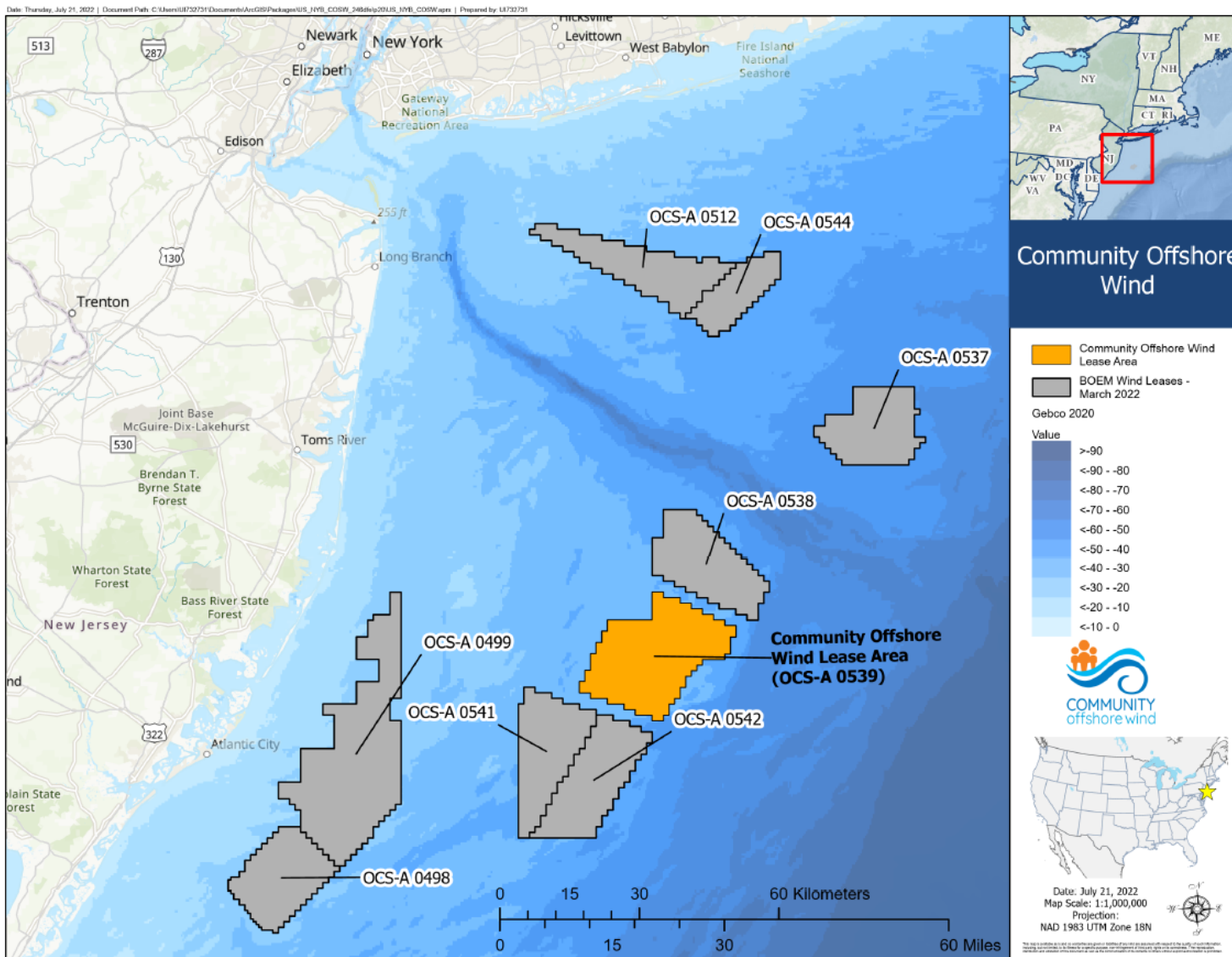


Figure 1 Lease Area OCS-A 0539

## **2 Tribes/Tribal Nations Engagement**

Community Offshore Wind believes it is important to recognize Native American peoples as the original and continuing stewards of the lands and waters in which we work. We acknowledge and respect the enduring historical, cultural, and personal connections between Native American Tribes and Tribal Nations to the region, both those Tribes and Tribal Nations currently residing in the region and those that were removed from it. We believe that the insights and knowledge of Tribes/Tribal Nations can and should play an important role in the clean energy transition, to help ensure that offshore renewable energy is developed in an environmentally, socially, and culturally sustainable manner.

A summary of engagement activities held and anticipated to be held over the next reporting period, with Tribes/Tribal Nations is provided in Section 2.1 through 2.4, below. These sections provide an overview of engagement with potentially affected federally recognized.

### **2.1 Overall Tribes/Tribal Nations Engagement Progress Since Last Report**

Since the submittal of the previous Progress Report on October 31, 2022, Community Offshore Wind held a Pre-Survey meeting, as required under Lease Stipulation 5.3.3, with the federally recognized Tribes/Tribal Nations listed in Lease OCS-A 0539 to provide an overview of Community Offshore Wind and the 2023 High Resolution Geophysical and Geotechnical Survey Plan. Invitations to this meeting were sent by certified mail and email on March 27, 2023, and the meeting was held on April 14, 2023.

Community Offshore Wind also continued to work with the other New York Bight lessees to develop a Joint NATCP, as required under Lease Stipulation 3.1.2.2. A meeting hosted by BOEM to discuss the initial draft and contents of the Joint NATCP is scheduled for May 15, 2023.

A summary of the engagement activities held with Tribes/Tribal Nations is provided in Table 1, below.

**Table 1 Tribes/Tribal Nations Engagement During Reporting Period**

| Focus of Discussion or Engagement | Tribe(s)  | Summary of Engagement Activities  | Follow-up Actions, Activities, Outcomes  |
|-----------------------------------|---|---|--|
| Pre-Survey Meeting                | Representatives from 4 Tribes: Absentee Shawnee Tribe, Mashpee Wampanoag Tribe, Stockbridge-Munsee Band of Mohican Indians, and Wampanoag Tribe of Gay Head (Aquinnah) <sup>1</sup> | Community Offshore Wind held a pre-survey meeting to provide an overview of Community Offshore Wind, an update on the activities approved under the 2022 Survey Plan, and the geophysical and geotechnical survey activities proposed to be conducted under the 2023 Survey Plan submitted to BOEM. | Community Offshore Wind will follow up and provide information on how Protected Species Observer (PSO) training can be made accessible to Tribes/Tribal Nation members and how that training can be utilized within the industry.<br>Community Offshore Wind will also follow up and schedule an informational meeting to provide an overview of the underwater noise produced by geophysical survey equipment used in support of the Project and an overview the IHA application currently under review.<br>Community Offshore Wind offered to hold one-on-one meetings with Tribal governments to introduce the company, its proposed offshore wind Project, listen to Tribal governments concerns and recommendations and discuss ways to work together to achieve mutually beneficial outcomes during Project development. |

<sup>1</sup>Community Offshore Wind sent electronic and hardcopy pre-survey meeting invitations to the following Tribes/Tribal Nations: Absentee-Shawnee Tribe of Indians of Oklahoma, Shawnee Tribe, Delaware Tribe of Indians, Stockbridge-Munsee Community Band of Mohican Indians, Eastern Shawnee Tribe of Oklahoma, The Delaware Nation, The Narragansett Indian Tribe, Mashpee Wampanoag Tribe, The Shinnecock Indian Nation, Mohegan Tribe of Indians of Connecticut, and the Wampanoag Tribe of Gay Head (Aquinnah). The following Tribes/Tribal Nations declined the invitation: The Delaware Nation and the Eastern Shawnee Tribe of Oklahoma. The following Tribes/Tribal Nations accepted the invitation to the meeting: The Delaware Tribe of Indians, The Shinnecock Indian Nation, Stockbridge-Munsee Community Band of Mohican Indians, Mashpee Wampanoag Tribe, Absentee-Shawnee Tribe of Indians of Oklahoma, and The Delaware Nation. Unfortunately, not all the Tribes/Tribal Nations that accepted the invitation attended the meeting.



## **2.2 Identification of Potential Project Effects Related to Tribes/Tribal Nations Interests**

As part of the pre-survey meeting held on April 14, 2023, Tribes/Tribal Nations requested additional information on the underwater noise produced by geophysical survey equipment, due to concerns over potential impacts to marine species within the survey area. Tribes/Tribal Nations also expressed concerns about potential Project specific and cumulative impacts to the maritime environment, including important shellfish and fisheries and impacts to coastal environments from sedimentation, resulting from the construction and operations of offshore wind projects.

Tribes/Tribal Nations also noted the potential positive effects of the offshore wind industry, with Tribes/Tribal Nations being given the opportunity to take advantage of protected species observer (PSO) training programs, which could provide members with employment opportunities on projects across the US and around the world. Concerns, however, were noted on the ability to access the additional training required to fully utilize the PSO certificate and requested that the offshore wind industry work together to address and support Tribe members in becoming fully employable as PSOs.

## **2.3 Tribes/Tribal Nations Feedback on Transmission Planning**

Community Offshore Wind continued the development of the transmission routing required to connect the wind farm into the electric grid. As the routes were not at a stage to share, engagement with Tribes/Tribal Nations on transmission routing to solicit feedback and recommendations did not occur.

## **2.4 Anticipated or Scheduled Tribes/Tribal Nations Engagement Activities**

During the next reporting period, Community Offshore Wind anticipates the following engagement:

- Community Offshore Wind will participate in the Joint New York Bight NATCP meeting scheduled by BOEM for May 2023. This engagement will be coordinated with the other New York Bight lessees.
- Community Offshore Wind intends to commence engagement with the Tribes/Tribal Nations on the preliminary draft transmission routing in Q3 2023, to solicit feedback and recommendations.
- Community Offshore Wind plans to offer to hold introductory engagement meetings with each of the Tribes/Tribal Nations at their government offices and/or Tribal Councils, to introduce the Community Offshore Wind team, provide an overview of the Project, and listen to Tribal government concerns and recommendations.

### **3 Engagement with Potentially Affected Parties**

Community Offshore Wind believes that coordination and engagement with all stakeholders is crucial to the success of an offshore wind project and is committed to an “early and often” approach to help ensure that the Project is developed in an environmentally, socially, and culturally sustainable manner for all. Starting prior to the effective date of Lease OCS-A 0539, Community Offshore Wind began to identify and engage with various types of stakeholders, identified as potentially interested in or affected by offshore wind and the Project. In support of the stakeholder engagement strategy, a list of stakeholders which are potentially applicable to the development, construction, and operations of an offshore wind farm in the New York Bight was developed and can be found in Appendix A. This list is intended to be a “living” document and will be updated throughout the process, as additional stakeholders are identified.

Since the submittal of the previous Progress Report on October 31, 2022, Community Offshore Wind has continued to reach out to stakeholders to introduce the Project and Project team, to provide an overview of the Project, and to solicit feedback. A summary of the engagement activities held with Commercial and Recreational Fisheries is provided in Section 3.1, a summary of Agency engagement presented in Section 3.2, and a summary of other stakeholder engagement presented in Section 3.3.

#### **3.1 Summary of Commercial and Recreational Fisheries Engagement Activities**

##### **3.1.1 Overall Engagement Progress Since Last Report**

Since the submittal of the previous Progress Report on October 31, 2022, Community Offshore Wind had 109 direct engagements with over 260 fishery participants and stakeholders. The Project team continues to take a broad approach to engagement with a full range of potentially interested parties, including academic and research institutions, state and federal fisheries agencies, environmental nongovernmental organizations, and other ocean users. Engagement strategies included in-person meetings, phone and video calls, information distribution, small group meetings, large group virtual presentations with multiple participants, as well as attendance at trade shows and research symposia.

Community Offshore Wind’s two Fisheries Technical Advisors/Fisheries Representatives also play an important role in engaging with and communicating the concerns and perspectives of their respective fisheries to the Project and had an additional 211 direct engagements during the reporting period. Additionally, members of the Project team virtually attended various regional fisheries management council meetings to maintain awareness of issues of importance to fisheries participants and stakeholders.

Community Offshore Wind is aware of the engagement burden on fisheries participants and stakeholders. The Project team has tried to balance the frequency of repeated outreach to individuals and groups with the need to understand and accurately convey fisheries characteristics, operations, and perspectives to the larger Project team. Exploring efficient and effective communication methods remains a focus of our conversations with fisheries participants.

Community Offshore Wind has also worked with other developers to form a New York Bight fisheries coordination work group. Together, this group is actively working to develop approaches for coordinated engagement and outreach to fisheries participants, managers, and agencies to promote efficient and effective engagement. Community Offshore Wind and several other New York Bight developers have also included one another's fisheries liaisons in electronic distribution of fisheries and mariners notices regarding upcoming survey activities to help improve coordination and awareness of adjacent survey activities. Community Offshore Wind also attended the Business Network for Offshore Wind's International Partnership Forum and used this as an opportunity to coordinate with other developers on a variety of topics.

Community Offshore Wind also recently posted an updated version of the Fisheries Communications Plan on the Fisheries page of the Project website: <https://communityoffshorewind.com/fisheries>.

A summary of the engagement activities held with commercial and recreational fisheries participants and stakeholders is provided in Table 2, below. Please note that the majority of engagement activities cover multiple topics and do not have a single focus.

### 3.1.2 Identification of Potential Project Effects Related to Parties

Community Offshore Wind has identified several categories of potential Project effects raised by fisheries participants and stakeholders during this reporting period:

- Ecological: Potential effects of cable electromagnetic fields (EMF) on fish migratory patterns, changes in distributions of commercially and recreationally important species, effects of survey equipment on marine wildlife, pollution due to spills/leaks of lubricant from turbines, effects of construction on fisheries-independent resource surveys
- Safety: Potential effects of turbines on radar clutter, cable burial depths and maintenance, operation of mobile gear fisheries within the Lease Area
- Access: Effects on transit patterns through the Lease Area, ability for recreational and commercial vessels to fish within the Lease Area post-construction, potential effects on insurance rates

The Project team continues to integrate fisheries participant and stakeholder feedback into the overall Project development and is actively working to incorporate concerns related to the marine environment, safety, and access into the Project design and layout.

### 3.1.3 Feedback from Parties on Transmission Planning

Community Offshore Wind continued the development of the transmission routing required to connect the wind farm into the electric grid. The Project team is actively engaging local captains with current and historical knowledge of the bottom types and fishing patterns inshore of the Lease Area as part of its transmission route investigation and survey planning and is working to incorporate important fishing areas and fisheries habitats into the transmission planning process.

**Table 2 Engagement with Commercial and Recreational Fisheries Participants and Stakeholders During Reporting Period**

| Focus of Discussion or Engagement  | Party(ies)   | Summary of Engagement Activities   | Follow-up Actions, Activities, Outcomes   |
|--|--|--|---|
| Planned survey activities within Lease Area  | <u>All Parties</u><br>Commercial and Recreational fisheries participants and stakeholders; Academic & research institutions & programs; State & Federal agencies; Resource survey managers; Fisheries liaisons & representatives, Regional Fishery Management Councils | <ul style="list-style-type: none"> <li>In-person and electronic distribution of fisheries notice and Lease Area maps</li> <li>Direct communication regarding seasonal and port-specific headboat and charter fishing &amp; transit patterns, potential overlap with survey activities</li> <li>Discussed seasonal patterns of commercial mobile and fixed-gear fishing operations &amp; transit, and potential overlap with survey activities</li> <li>Direct coordination with resource survey managers and communication with researchers</li> </ul> | <ul style="list-style-type: none"> <li>Expansion of contact list for distribution of future fisheries notices and coordination of fishing and survey activities</li> <li>Provided information on potential overlap of commercial and for-hire fishing activities and transits to survey crew and scientific party during survey kickoff</li> <li>Follow up communications with survey managers closer to onset of resource surveys</li> </ul>                             |
| <ul style="list-style-type: none"> <li>Communication and engagement approaches</li> <li>Priority issues for recreational community</li> <li>Opportunities for collaboration</li> </ul> | <u>Recreational</u><br>Recreational fishermen; Tackle or recreational industry; Charter/for-hire fishermen; Recreational fishing association   | Direct communication and discussion of the following: <ul style="list-style-type: none"> <li>Concerns regarding electromagnetic field (EMF) effects on fish behavior/migration, effects of turbines on habitat and species distribution, environmental characteristics of turbine lubricants, effects of survey gear on marine wildlife, pace and scope of offshore wind development</li> <li>Frustration with federal regulatory process and consideration of recreational community impacts</li> </ul>   | <ul style="list-style-type: none"> <li>Incorporate feedback on communication tools, methods, and topics into future engagements</li> <li>Follow up on concerns related to potential leaks of turbine lubricants and EMF</li> <li>Conducted meetings with recommended points of contact regarding habitat, fishing access, data collection</li> <li>Continue conversations regarding opportunities for collaboration on and support for recreational priorities</li> </ul> |

| Focus of Discussion or Engagement   | Party(ies)   | Summary of Engagement Activities   | Follow-up Actions, Activities, Outcomes  |
|---|--|--|--|
|   |  | <ul style="list-style-type: none"> <li>• Communication outlets, modification of communication tools to enhance utility for recreational community, suggested engagement approaches and topics (e.g., presentations to fishing clubs)</li> <li>• Potential opportunities for collaboration on priority initiatives related to habitat resource needs, recreational fishing access, underserved communities, collection of scientific information</li> <li>• Increased public awareness of offshore wind development as a result of whale strandings</li> <li>• Developer communications regarding existing and ongoing background research</li> </ul> | <ul style="list-style-type: none"> <li>• Consider appropriate approaches to convey information on existing research</li> </ul>   |
| <ul style="list-style-type: none"> <li>• Communication methods and topics</li> <li>• Regional compensation</li> <li>• Safety &amp; design</li> <li>• Opportunities for collaboration</li> </ul> | <p><u>Commercial</u><br/>Commercial fishermen; Fleet owners/managers; Fishing associations; Seafood processors</p> | <p>Direct communication and discussion of the following:</p> <ul style="list-style-type: none"> <li>• Concerns regarding future ability of mobile gears to safely operate within lease area, impacts on vessel insurance costs, and need for AIS on all turbines</li> <li>• Cable burial depths &amp; consequences if vessels accidentally interact with cables</li> <li>• Turbine spacing and orientation and considerations for towing directionality</li> <li>• Potential ecological effects of cable electromagnetic fields and turbines on fish migration, distribution, and benthic ecology</li> </ul>   | <ul style="list-style-type: none"> <li>• Continue working with engineering team to incorporate concerns regarding layout, safety, and cables into Project design</li> <li>• Follow-up on effective communication methods and topics</li> <li>• Development of monitoring and research programs that include roles for industry</li> <li>• Incorporate feedback on regional compensation fund in development efforts</li> </ul> |

| Focus of Discussion or Engagement  | Party(ies)                 | Summary of Engagement Activities  | Follow-up Actions, Activities, Outcomes  |
|------------------------------------|----------------------------|---|--|
|                                    |                            | <ul style="list-style-type: none"> <li>• Industry knowledge and perception of federal regulatory process and engagement</li> <li>• Impacts of offshore wind development on shoreside infrastructure &amp; costs</li> <li>• Development of third-party regional compensation program, inclusion of different industry components, contingencies or backstops if fund is insufficient to address claims, consistency and trustworthiness of data used to establish baseline for compensation claims</li> <li>• Opportunities to support industry through community access to local seafood</li> </ul> | <ul style="list-style-type: none"> <li>• Coordinated a holiday donation (December 2022) of locally-harvested, locally-processed seafood to 9 New York area food banks from Brooklyn to Buffalo with Project's Community Outreach team</li> <li>• Explore continued opportunities to provide underserved community access to seafood</li> </ul> |
| Monitoring and research approaches | State and federal agencies | <p>Regular calls with agencies to share information and discuss topics including:</p> <ul style="list-style-type: none"> <li>• Fisheries monitoring and research approaches and best practices</li> <li>• Project-specific vs. regional monitoring, developer coordination, and opportunities for collaboration with industry</li> <li>• Regional coordination of fisheries stakeholder engagement methods</li> <li>• Existing state programs that may be supported by developer research, monitoring, and/or mitigation approaches</li> </ul>  | <ul style="list-style-type: none"> <li>• Incorporate feedback from conversations into overall approach to avoidance and mitigation</li> </ul>  |

| Focus of Discussion or Engagement  | Party(ies)  | Summary of Engagement Activities  | Follow-up Actions, Activities, Outcomes   |
|--|---|---|---|
| <ul style="list-style-type: none"> <li>• Existing monitoring, research, and extension initiatives</li> <li>• Opportunities for collaboration and partnerships</li> </ul> | <p>Academic or research institutes and programs</p> | <ul style="list-style-type: none"> <li>• Participated in working group and advisory body meetings of regional research collaboratives (RWSC, ROSA)</li> <li>• Discussed partnership opportunities with existing regional research initiatives applicable to Project area and species of interest</li> <li>• Discussed partnership opportunities with regional entities focused on collaboration with industry, exploration of tools/methods that will promote long-term success and coexistence</li> <li>• Participated in New England Cooperative Research Program Summit</li> </ul> | <ul style="list-style-type: none"> <li>• Incorporate results of discussions into development of Project monitoring and research programs</li> <li>• Scheduled follow-up discussions based on initial contacts and conversations</li> </ul>  |
| <ul style="list-style-type: none"> <li>• Introductions and Project overview</li> <li>• Partnership opportunities</li> </ul>  | <p>Environmental nongovernmental organizations</p>  | <ul style="list-style-type: none"> <li>• Project overview, fisheries team introductions, review of engagement approaches</li> <li>• Discussed approach and philosophy regarding avoidance and mitigation of project effects</li> <li>• Discussed regional research and monitoring needs and potential partnership opportunities</li> </ul>  | <ul style="list-style-type: none"> <li>• Integrate feedback from conversations into development of monitoring and research program</li> <li>• Schedule future meetings to discuss specific research questions and collaborations</li> </ul> |

| Focus of Discussion or Engagement                              | Party(ies)  | Summary of Engagement Activities   | Follow-up Actions, Activities, Outcomes  |
|--|---|--|--|
| Survey activities  | Fisheries liaisons, Fisheries representatives   | <ul style="list-style-type: none"> <li>• Team calls to discuss survey activities and Project development</li> <li>• Frequent direct communications regarding survey vessel activities, current and upcoming fishing operations within and inshore of Lease Area</li> <li>• Public and media response to and coverage of survey activities</li> </ul> | <ul style="list-style-type: none"> <li>• Incorporation and communication of feedback to Project site investigation team and survey crews</li> <li>• Integration of feedback into future survey communications</li> </ul> |
| American Fisheries Society Mid-Atlantic Chapter Annual Meeting | Academic or research institutions   | Introduction and overview of Project, research and monitoring approaches   | Incorporation of feedback into development of research and monitoring plan   |
| Project overview and introduction                              | Wind Works Long Island (ENGO)   | Introductory webinar with multiple Project workstream leads, including Fisheries. Provided high level overview of engagement and mitigation approach   | Answered general questions regarding fisheries participant and stakeholder engagement  |
| Rutgers University Offshore Wind Energy Symposium              | Academic or research institutions   | Participated in breakout sessions on offshore wind challenges, opportunities and partnerships with researchers, students, agency staff; Engaged with other fisheries liaisons  | Virtual meetings with two symposium participants   |
| Seafood Expo North America (Boston Seafood Show)               | Commercial Fishermen, Fleet Owners/Managers, Fishing Associations, Seafood Processors | General outreach and interaction with commercial industry participants at trade show   | Scheduled future direct communication & meetings   |



| <b>Focus of Discussion or Engagement</b>                      | <b>Party(ies)</b>  | <b>Summary of Engagement Activities</b>  | <b>Follow-up Actions, Activities, Outcomes</b>   |
|---|--|--|--|
| Philly Fishing Show   | Recreational fishermen; For-hire captains; Tackle or recreational industry; Fishing associations | General interaction with recreational industry participants at trade show  | Consideration of future trade shows as engagement opportunities  |
| New Jersey Saltwater Fishing Expo                             | Recreational fishermen; For-hire captains; Tackle or recreational industry; Fishing associations | General outreach and interaction with recreational industry participants at trade show   | <ul style="list-style-type: none"> <li>• Consideration of future trade shows as engagement opportunities</li> <li>• Scheduled follow-up engagements based on interactions</li> </ul> |
| New Jersey Wind Institute Research Symposium                  | Academic or research institutions  | Listened to project updates from New Jersey Research and Monitoring Initiative and New Jersey Wind Institute Fellows Program, interacted with researchers & students, and helped staff Project booth | Incorporate information into development of Project monitoring & research initiatives.   |
| Marine Law Symposium, Roger Williams University School of Law | Academic or research institutions  | Provided presentation during developer panel discussion at marine law symposium focused on offshore wind development and achievement of net positive biodiversity within the mitigation hierarchy.   | Consider and incorporate outcomes from panel discussions into Project's approach to impact avoidance and mitigation  |

### 3.1.4 Anticipated or Scheduled Engagement Activities

During the next reporting period, Community Offshore Wind anticipates the following engagement:

- Community Offshore Wind will continue outreach and coordination regarding upcoming survey activities with commercial and recreational fisheries stakeholders and participants, fisheries survey managers, fishery managers, and the USCG, particularly as the Project continues transmission planning.
- Community Offshore Wind will continue to participate in the New York Bight fisheries workgroup of the industry trade association to increase coordination among lessees, which will enable more efficient engagement opportunities for fisheries stakeholders.
- Community Offshore Wind will continue to develop monitoring and research programs in collaboration with academic and research institutions and state and federal fisheries agency partners, that includes exploration of coordinated regional approaches with other developers.
- Community Offshore Wind will continue to engage with other developers and representatives of the recreational fishing industry to improve coordination and communication.
- Community Offshore Wind will be in attendance at the upcoming American Fisheries Society Annual Meeting symposium “Offshore Wind, Fish, and Fisheries – Emerging Knowledge and Applications.”

## 3.2 **Summary of Agency Engagement Activities**

### 3.2.1 Overall Engagement Progress Since Last Report

Since the submittal of the previous Progress Report on October 31, 2022, Community Offshore Wind updated our Agency Communications Plan based on feedback received and posted the latest version on the home page of our website: <https://communityoffshorewind.com/>

Community Offshore Wind also scheduled a standing bi-annual inter-agency meeting, which will provide a regular opportunity for the Agencies to hear from the Project team, receive an update on the Project, to provide any important information, and to provide feedback and recommendations. This meeting is intended to supplement regular engagement with individual Agencies.

Community Offshore Wind also regularly engaged with BOEM, meeting on an as-needed basis.

A summary of the engagement activities held with Agencies is provided in Table 3, below.

**Table 3 Engagement with Agencies During Reporting Period**

| Focus of Discussion or Engagement  | Party(ies)  | Summary of Engagement Activities  | Follow-up Actions, Activities, Outcomes  |
|--|---|---|--|
| Notification of a revised Agency Communications Plan   | Email sent to the following federal and state agencies: <ul style="list-style-type: none"> <li>• USACE</li> <li>• NOAA</li> <li>• US EPA</li> <li>• USFWS</li> <li>• USCG</li> <li>• DoD</li> <li>• NPS</li> <li>• NYS</li> <li>• NJ</li> </ul> | Community Offshore Wind sent an email which provided a revised copy of the Agency Communications Plan and noted that the plan would be posted on the Community Offshore Wind website.           | Community Offshore Wind welcomed continued feedback on the Agency Communications Plan. |
| Regular Meetings held with BOEM to discuss the development of the Lease Area and relevant Lease Stipulations | BOEM  | Community Offshore Wind discussed the status of the communications plans, survey planning and geophysical and geotechnical (G&G) requirements, anticipated Project timeline, among other items. | Community Offshore Wind to continue providing BOEM with regular Project updates.       |

**3.2.2 Identification of Potential Project Effects Related to Parties**

N/A – potential effects related to the Project or Project activities were not raised by Agencies for Community Offshore Wind consideration during this reporting period.

**3.2.3 Feedback from Parties on Transmission Planning**

Community Offshore Wind continued the development of the transmission routing required to connect the wind farm into the electric grid. As the routes were not at a stage to share, engagement with Agencies on transmission routing to solicit feedback and recommendations did not occur.

**3.2.4 Anticipated or Scheduled Engagement Activities**

During the next reporting period, Community Offshore Wind anticipates the following engagement:

- Community Offshore Wind will host the first bi-annual inter-agency meeting to provide a general update on the Project.
- Community Offshore Wind intends to commence engagement with the Agencies on the preliminary draft transmission routing in Q3 2023, to solicit feedback and recommendations.

### 3.3 Summary of Other Stakeholder Engagement Activities

As noted in Lease Stipulation 3.1.1, Community Offshore Wind also engaged with other stakeholder parties that may be potentially affected by the project activities on the OCS, which include, but are not limited to, the following:

- Coastal communities;
- Educational and research institutions;
- Environmental and public interest non-governmental organizations;
- Mariners and the maritime industry;
- Ocean users;
- Submarine cable operators; and
- Underserved communities, as defined in Section 2 of Executive Order 13985.

#### 3.3.1 Overall Engagement Progress Since Last Report

Since the submittal of the previous Progress Report on October 31, 2022, Community Offshore Wind has continued outreach to a variety of stakeholders across our Project geography. Engagement strategies included in-person meetings, phone and video calls, information distribution, small group meetings, large group virtual and in-person presentations with multiple participants, as well as attendance at events, trade shows, and tours of stakeholder facilities. The Project team continues to take a broad approach to engagement with stakeholders in order to meet them where they are, leveraging opportunities for sponsorship and participation in local workforce and labor, environmental, educational, community, business and industry, and volunteerism events.

A summary of the engagement activities held with stakeholders is provided in Table 4, below. The primary focus of most meetings is to introduce Community Offshore Wind and provide regular updates on our progress.

#### 3.3.2 Identification of Potential Project Effects Related to Parties

Community Offshore Wind has identified several categories of potential Project effects raised by stakeholders during this reporting period:

- Ecological: Potential effects of cable electromagnetic fields (EMF); effects of survey equipment and construction on marine wildlife
- Workforce: Raised the need for wraparound services to support workforce development
- Traffic: Raised concerns over the impacts to traffic during onshore construction associated with offshore wind projects

**Table 4 Engagement with Other Parties During Reporting Period**

| Focus of Discussion or Engagement   | Party(ies)  | Summary of Engagement Activities   | Follow-up Actions, Activities, Outcomes   |
|---|---|--|---|
| Introductory emails sent  | Numerous emails and meetings with entities within the following sectors have been sent: <ul style="list-style-type: none"> <li>• Workforce Development Agencies</li> <li>• Universities and Educational Institutions</li> <li>• Environmental ENGOs</li> <li>• Community based organizations</li> <li>• Environmental Justice groups</li> </ul> | Community Offshore Wind Project and Lease Area.                          | Continuing conversations and engagement to determine partnership opportunities and to keep lines of communication open as project progresses. |
| ACE NY  | Engaged with multiple attendees.  | Discussed Lease Area, Project, and timeline.                             | Follow-up meetings were set up with interested attendees.   |
| Nassau Suffolk School Boards Assoc. - OSW Manufacturing Public Education Expo – Speaking role | Engaged with multiple community members.  | Discussed Lease Area, Project, and timeline.                             | Follow-up meetings were set up with interested attendees.   |
| OSW/EJ Introductory Webinar with NYSERDA  | Listening mode  | EJ/ OSW  | Continue to join calls.   |
| BOEM EJ Forum   | Listening mode  | EJ/ OSW  | Continue to join calls.   |
| COSW beach clean up with Atlantic Marine Conservation Society in Kings Park, NY               | Cleaned beach at Sunken Meadow Park   | Cleaned beach and discussed Community Offshore Wind with other attendees | Will continue to support AMSEAS.  |
| Winter Coat Donation  | Made donation of 900 winter coats to 9 NGOs throughout NYS  | n/a  | Follow up meetings were set up  |

| Focus of Discussion or Engagement   | Party(ies)  | Summary of Engagement Activities                    | Follow-up Actions, Activities, Outcomes        |
|---|---|---|--|
| Supply Chain team attended event at the Buffalo Niagara convention center     | Engaged with multiple attendees                                 | Supply chain  | Follow up meetings and conversations.          |
| Statewide Seafood Donation  | Donated 30k seafood meals to multiple food banks throughout NYS | Engaged multiple NGO partners and community members | Continued regular engagement with stakeholders |
| Attended ABNY Power Breakfast with Governor Kathy Hochul and Mayor Eric Adams | Sponsor   | Engaged multiple attendees                          | Continued regular engagement with stakeholders |
| Attended Power with Breakfast Speaker Adams at ACE Hotel in Brooklyn          | Attendee  | Engaged multiple attendees                          | Continued regular engagement with stakeholders |
| Riverkeeper event at Hearst in NYC  | Attendee  | Engaged multiple attendees                          | Continued regular engagement with stakeholders |
| OFFSHORE WIND LUNCH & LEARN – Solo Trattoria Freehold NJ                      | Attendee  | Engaged multiple attendees                          | Continued regular engagement with stakeholders |
| NYSABPRHAL conference in Albany   | Attendee  | Engaged multiple attendees                          | Continued regular engagement with stakeholders |
| DEIJ EJ BUS TOUR & SUMMIT, DREAM HOTEL  | Attendee & Sponsor/Booth  | Engaged multiple attendees                          | Continued regular engagement with stakeholders |
| Engineering Week – multiple museum visits donated to CBO’s downstate NY       | Sponsor   | n/a   | Continued regular engagement with stakeholders |

| Focus of Discussion or Engagement                           | Party(ies)                               | Summary of Engagement Activities                | Follow-up Actions, Activities, Outcomes        |
|---|--|---|--|
| BROOKLYN ALBANY NIGHT & LOBBY DAY                           | Sponsor                                  | Community Offshore Wind Project and Lease Area  | Continued regular engagement with stakeholders |
| STEM Weekend: Maritime/Saltwater Stories at LICM            | Booth                                    | Community Offshore Wind Project and Lease Area  | Continued regular engagement with stakeholders |
| MRV Wind & Drinks in Brooklyn                               | Booth                                    | Engaged multiple attendees                      | Continued regular engagement with stakeholders |
| Renew NJ – Harrah’s in AC                                   | Booth                                    | Community Offshore Wind Project and Lease Area. | Continued regular engagement with stakeholders |
| Employees volunteering at Fulfill Food Bank Volunteer event | Volunteer event                          | n/a   | Continued regular engagement with stakeholders |
| SIEDC Forum for a Sustainable Future – Wagner College       | Speaking opportunity and booth           | Community Offshore Wind Project and Lease Area  | Continued regular engagement with stakeholders |
| RETI Center: NYC Water Week Boat Tour                       | Attendee                                 | Engaged multiple attendees                      | Continued regular engagement with stakeholders |
| IPF Conference in Baltimore, MD.                            | Sponsor and Booth                        | Community Offshore Wind Project and Lease Area  | Continued regular engagement with stakeholders |
| Spoke to students at the RETI Center in Red Hook, Brooklyn. | Speaking opportunity                     | Community Offshore Wind Project and Lease Area  | Continued regular engagement with stakeholders |
| Congressional delegation for New York and New Jersey        | Continued virtual and in-person meetings | Introductory and maintained outreach            | Continued regular engagement with stakeholders |

| Focus of Discussion or Engagement   | Party(ies)  | Summary of Engagement Activities                                     | Follow-up Actions, Activities, Outcomes  |
|---|---|--|--|
| New York State elected officials  | Continued virtual and in-person meetings  | Introductory and maintained outreach                                 | Continued regular engagement with stakeholders   |
| Local elected officials   | Continued virtual and in-person meetings  | Introductory and maintained outreach                                 | Continued engagement with stakeholders   |
| NJ Wind Institute Research Symposium  | Engage with multiple attendees  | Discuss Lease Area, Project, and timeline.                           | Follow up meetings with interested attendees   |
| Multiple Earth Day Events in NY & NJ  | Engage with multiple ENGOS to volunteer at beaches in NY & NJ   | Discuss Lease Area, Project, and timeline                            | Follow up with interested attendees  |
| We Are the Future Summit organized by Minority Millennials and City & State | Engage with multiple attendees  | EJ/ MWBE/ OSW  | Follow up meetings with interested attendees   |
| Numerous emails, meetings, conferences and events.                          | <ul style="list-style-type: none"> <li>• NYS AFL-CIO</li> <li>• NYS Building &amp; Construction Trades Council</li> <li>• Climate Jobs NY</li> <li>• Long Island Federation of Labor</li> <li>• Hudson Valley Building &amp; Construction Trades Council</li> <li>• Other local affiliate unions</li> </ul> | Discussed Lease Area, Project timeline, and training/workforce needs | Continuing conversations and engagement to determine partnership opportunities and to keep lines of communication open as project progresses |
| Numerous emails, meetings, conferences and events.                          | <ul style="list-style-type: none"> <li>• NJ AFL-CIO</li> <li>• NJ Building &amp; Construction Trades Council</li> <li>• Other local affiliate unions</li> </ul>   | Discussed Lease Area, Project timeline, and training/workforce needs | Continuing conversations and engagement to determine partnership opportunities and to keep lines of communication open as project progresses |



### 3.3.3 Feedback from Parties on Transmission Planning

Community Offshore Wind continued the development of the transmission routing required to connect the wind farm into the electric grid. The Project team is actively engaging with stakeholders as part of its transmission route investigation and survey planning and is working to incorporate feedback and recommendations into the transmission planning process. At this stage in development, Community Offshore Wind has heard concerns from stakeholders centered around the potential traffic impacts for any potential onshore routes.

### 3.3.4 Anticipated or Scheduled Engagement Activities

During the next reporting period, Community Offshore Wind anticipates the following engagement:

- Community Offshore Wind will continue to release monthly newsletters via email.
- Community Offshore Wind will continue outreach and coordination with all stakeholder groups, included but not limited to federal, state, and local government stakeholders, labor unions, community, and environmental groups.
- Community Offshore Wind will continue to participate in conferences, community forums, stakeholder events and activities/events to educate stakeholders and communities.
- Community Offshore Wind will continue to develop relationships within the communities our Project will impact.

## 4 Survey Plan(s) Activities

Since the submittal of the previous Progress Report on October 31, 2022, Community Offshore Wind submitted an application to NOAA Fisheries for an Incidental Harassment Authorization (IHA) on November 17, 2022. The IHA application was posted on NOAA Fisheries website on April 21, 2023 and is available for public review and comment through May 22, 2023. The IHA application is for the use of geophysical survey equipment (i.e., sparker) to support site assessment and characterization activities within the Lease Area and export cable routes; as the export cable routes were not finalized at the time of application submittal, an export cable study area was shown to provide the general location of where survey activities are proposed.

Preliminary geophysical survey activities approved under the 2022 High-Resolution Geophysical Survey Plan commenced in January 2023 and are anticipated to go through the remainder of 2023. Survey activities occurred only within the Lease Area, with work along the export cable routes is anticipated to commence during the next reporting period.

Community Offshore Wind also submitted our 2023 High-Resolution Geophysical and Geotechnical Survey Plan to BOEM on February 21, 2023. The 2023 Survey Plan proposes additional geophysical and preliminary geotechnical survey activities within the Lease Area and export cable routes. Activities under the 2023 Survey Plan are anticipated to commence in June or July 2023 and are anticipated to last one year. Community Offshore Wind will provide notice 2-weeks prior to the commencement of survey activities to applicable ocean users, in accordance with Lease Stipulation 3.1.2.1, in addition to providing notice in the Local Notice to Mariners. In accordance with Lease Stipulation 5.3.3, a Tribal Pre-Survey Meeting was held on April 14, 2023. A pre-survey meeting was held with BOEM on April 25, 2023. Approval of the 2023 Survey Plan and commencement of activities described within is expected during the next reporting period.

Data collected under both the 2022 Survey Plan and the 2023 Survey Plan will support the development of the Construction and Operations Plan (COP) and associated appendices (including the Marine Archaeological Resource Assessment), and the technical and engineering design of the Project.

Additional information on Community Offshore Wind's survey activities can be found on the fisheries page on our website: <https://communityoffshorewind.com/fisheries>

A summary of Community Offshore Wind's anticipated survey activities is provided in Table 5, below.

**Table 5 Survey Plan Activities under BOEM Review or Underway**

| <b>Type of Survey</b>                              | <b>Survey Activity Date or Proposed Date</b> | <b>Location Description</b>        |
|--|--|------------------------------------|
| Preliminary geophysical survey (2022 Survey Plan)  | January 2023                                 | Lease Area and export cable routes |
| Additional geophysical survey (2023 Survey Plan)   | June/July 2023                               | Lease Area and export cable routes |
| Preliminary geotechnical survey (2022 Survey Plan) | Q3 2023                                      | Lease Area and export cable routes |
| Additional geotechnical survey (TBD)               | TBD  | Lease Area                         |

## Appendix A Tribes and Other Parties Relevant to the Project

**Table A-1 Tribes and Tribal Nations Relevant to the Project**

| Name of Tribe  | Party Type(s) |
|--|---------------|
| Absentee-Shawnee Tribe of Indians of Oklahoma        | FTribe        |
| Delaware Nation                                      | FTribe        |
| Delaware Tribe of Indians                            | FTribe        |
| Eastern Shawnee Tribe of Oklahoma                    | FTribe        |
| Mashantucket Pequot Tribal Nation                    | FTribe        |
| Mashpee Wampanoag Tribe                              | FTribe        |
| Mohegan Tribe of Indians of Connecticut              | FTribe        |
| Narragansett Indian Tribe                            | FTribe        |
| Shawnee Tribe  | FTribe        |
| Shinnecock Indian Nation                             | FTribe        |
| Stockbridge-Munsee Community Band of Mohican Indians | FTribe        |
| Wampanoag Tribe of Gay Head-Aquinnah                 | FTribe        |
| Nanticoke Lenni-Lenape Tribal Nation                 | STribe        |
| Powhatan Renape Nation                               | STribe        |
| Ramapough Lenape Nation                              | STribe        |
| Unkechaug Nation                                     | STribe        |

**Table A-2 Parties Relevant to the Project**

| Name of Party   | Party Type(s) |
|---|---------------|
| <i>Commercial and Recreational Fishing</i>              |               |
| Commercial Scallop Fishery                              | CFish         |
| Commercial Surfclam Fishery                             | CFish         |
| Commercial Gillnet Fishery (Monkfish, Dogfish)          | CFish         |
| Commercial Lobster Fishery                              | CFish         |
| Commercial Trawl Fishery                                | CFish         |
| Commercial Longline Fishery (Tilefish)                  | CFish         |
| Commercial Fishing Associations                         | CFish         |
| Commercial Seafood Processors                           | CFish         |
| Commercial Industry Services                            | CFish         |
| New York For-hire Headboat Fisheries                    | RFish         |
| New Jersey For-hire Headboat Fisheries                  | RFish         |
| New York For-hire Charter Boat Fisheries                | RFish         |
| New Jersey For-hire Charter Boat Fisheries              | RFish         |
| New York Private Recreational Anglers                   | RFish         |
| New Jersey Private Recreational Anglers                 | RFish         |
| New York Recreational Fishing Organizations             | RFish         |
| New Jersey Recreational Fishing Organizations           | RFish         |
| New York Recreational Bait & Tackle Shops or Industry   | RFish         |
| New Jersey Recreational Bait & Tackle Shops or Industry | RFish         |
| Regional Fishery Management Councils                    | RFMC          |
| New England Fishery Management Council                  | RFMC          |
| Mid-Atlantic Fishery Management Council                 | RFMC          |
| Atlantic States Marine Fisheries Commission             | RFMC          |
| Academic and Research Institutions or Programs          | AR            |
| Responsible Offshore Development Alliance (RODA)        | CFish         |
| <i>Federal and State Agencies</i>                       |               |
| BOEM  | FA            |
| BSEE  | FA            |
| USACE   | FA            |
| NOAA  | FA            |
| US EPA  | FA            |
| USFWS   | FA            |
| USCG  | FA            |
| DoD   | FA            |
| NPS   | FA            |

| Name of Party                                    | Party Type(s) |
|--|---------------|
| NYSDOS   | SA            |
| NYSDEC   | SA            |
| NYSDPS   | SA            |
| NYSDOT   | SA            |
| NJDEP  | SA            |
| CT DEEP  | SA            |
| RI DEM   | SA            |
| MADMF  | SA            |
| MD DNR   | SA            |
| DE DNREC   | SA            |
| NCDMF  | SA            |
| VMRC   | SA            |
| <i>Other Ocean Users</i>                         |               |
| New York Bight Subsea Cable Owners and Operators | SCO           |
| North Atlantic Submarine Cable Association       | SCO           |
| National Environmental NGOs                      | NGO           |
| New York Environmental NGOs                      | NGO           |
| New Jersey Environmental NGOs                    | NGO           |
| Oceana   | NGO           |
| Citizens Campaign for the Environment            | NGO           |
| The Nature Conservancy                           | NGO           |
| Defenders of Wildlife                            | NGO           |
| National Wildlife Federation                     | NGO           |
| Sierra Club                                      | NGO           |
| Natural Resources Defense Council                | NGO           |
| National Audubon Society                         | NGO           |
| Surfrider Foundation                             | NGO           |
| Wildlife Conservation Society                    | NGO           |
| New York League of Conservation Voters           | NGO           |
| New Jersey League of Conservation Voters         | NGO           |
| Scenic Hudson                                    | NGO           |
| Riverkeeper                                      | NGO           |
| Waterfront Alliance                              | NGO           |
| RETI Center                                      | NGO           |
| LISC NY  | NGO           |
| Environment New Jersey                           | NGO           |
| Sustainable New Jersey                           | NGO           |
| CERES  | NGO           |

| Name of Party  | Party Type(s) |
|--|---------------|
| New York Environmental Justice Groups                              | EJG           |
| Long Island Environmental Justice Groups                           | EJG           |
| Brooklyn Environmental Justice Groups                              | EJG           |
| New York Environmental Justice Groups                              | EJG           |
| Staten Island Environmental Justice Groups                         | EJG           |
| New Jersey Environmental Justice Groups                            | EJG           |
| Monmouth County Environmental Justice Groups                       | EJG           |
| Ocean County Environmental Justice Groups                          | EJG           |
| WE ACT   | EJG           |
| UPROSE   | EJG           |
| Academic and Research Institutions or Programs                     | ERI           |
| New York Community Colleges  | ERI           |
| New Jersey Community Colleges                                      | ERI           |
| State University New York  | ERI           |
| Stony Brook University   | ERI           |
| Cornell University   | ERI           |
| Rutgers, The State University of New Jersey                        | ERI           |
| Monmouth University  | ERI           |
| New York State Energy Research and Development Authority (NYSERDA) | ERI           |
| New Jersey Research and Monitoring Initiative (RMI)                | ERI           |
| Regional Wildlife Science Collaborative (RWSC)                     | ERI           |
| Responsible Offshore Science Alliance (ROSA)                       | ERI           |
| National Offshore Wind Research and Development Consortium         | ERI           |
| New York Marine Rescue Center                                      | ERI           |
| New York Aquarium  | ERI           |
| Industry Groups  | IG            |
| American Clean Power   | IG            |
| Business Network for Offshore Wind                                 | IG            |
| Maritime Industry/Mariners   | M             |
| American Waterways Operators                                       | M             |
| World Shipping Council   | M             |
| State Working Groups   | SWG           |
| NYSERDA Environmental Technical Working Group (E-TWG)              | SWG           |
| NYSERDA Fisheries Technical Working Group (F-TWG)                  | SWG           |
| NYSERDA Maritime Technical Working Group (M-TWG)                   | SWG           |
| New Jersey Environmental Resources Offshore Wind Working Group     | SWG           |
| Chambers of Commerce   | CCom          |
| New Jersey Chamber of Commerce                                     | Ccom          |

| Name of Party   | Party Type(s) |
|---|---------------|
| Brooklyn Chamber of Commerce                              | Ccom          |
| Staten Island Chamber of Commerce                         | Ccom          |
| Long Beach Chamber of Commerce                            | Ccom          |
| New Jersey African American Chamber of Commerce           | Ccom          |
| New Jersey Sustainable Business Council                   | Ccom          |
| Orange County Partnership                                 | Ccom          |
| Workforce Development Agencies                            | WDA           |
| New York Community Based Organizations                    | CG            |
| Spin The Yard   | CG            |
| Billion Oyster Project                                    | CG            |
| NYC Parks Stewardship                                     | CG            |
| BOC Network, Inc.   | CG            |
| Southwest Brooklyn Industrial Development Corporation     | CG            |
| Long Island Progressive Coalition                         | CG            |
| The Wilkins Group   | CG            |
| New Jersey Community Based Organizations                  | CG            |
| New York Coastal Communities                              | CC            |
| Long Island Coastal Communities                           | CC            |
| Brooklyn Coastal Communities                              | CC            |
| New York City Coastal Communities                         | CC            |
| Staten Island Coastal Communities                         | CC            |
| New Jersey Coastal Communities                            | CC            |
| Monmouth County Coastal Communities                       | CC            |
| Ocean County Coastal Communities                          | CC            |
| New York Underserved Communities                          | UC            |
| Long Island Underserved Communities                       | UC            |
| Brooklyn Underserved Communities                          | UC            |
| New York City Underserved Communities                     | UC            |
| Staten Island Underserved Communities                     | UC            |
| New Jersey Underserved Communities                        | UC            |
| Monmouth Underserved Coastal Communities                  | UC            |
| Ocean County Underserved Communities                      | UC            |
| New York Labor Unions                                     | LU            |
| New Jersey Labor Unions                                   | LU            |
| New York State Building and Construction Trades Council   | LU            |
| New Jersey State Building and Construction Trades Council | LU            |
| New York State AFL-CIO                                    | LU            |
| New Jersey State AFL-CIO                                  | LU            |



| Name of Party                                  | Party Type(s) |
|--|---------------|
| Long Island Federation of Labor                | LU            |
| Hudson Valley Building and Construction Trades | LU            |
| Western NY Area Labor Federation               | LU            |

Party types:

CC = Coastal Community

Ccom = Chambers of Commerce

CFish = Commercial Fishing Industry CG = Community Group

EJG = Environmental Justice Groups

ERI = Educational and Research Institutions

FA = Federal Agency

FTribe = Federally Recognized Tribe

IG = Industry Group

LU = Labor Union

M = Maritime Industry/Mariners

NGO = Environmental and Public Interest Non-Governmental Organizations

RFish = Recreational Fishing Industry

RFMC = Regional Fishery Management Councils and Commissions

SA = State Agency

SCO = Submarine Cable Operators

STribe = State Recognized Tribe

SWG = State Working Group

UC = Underserved Community

WDA = Workforce Development Agencies

## Appendix B Lessee and Liaison Contact Information

**Table B-1 Community Offshore Wind Points of Contact**

| Name/Title   | Role  | Contact Information   |
|--|---|---|
| Daniel Sieger<br>Head of Development                       | Oversees permitting, environmental affairs, marine affairs, fisheries, and community engagement   | <a href="mailto:DanS@communityoffshorewind.com">DanS@communityoffshorewind.com</a><br>Phone: 857-472-3459             |
| Katherine Miller<br>Federal Permitting<br>Project Manager  | Oversees federal permitting of the project<br>Primary Point Contact for the Agency Communications Plan<br>Primary Point of Contact for the Native American Tribal Communications Plan | <a href="mailto:KatherineM@communityoffshorewind.com">KatherineM@communityoffshorewind.com</a><br>Phone: 512-436-6708 |
| Prescott Hartshorne<br>State Permitting<br>Project Manager | Oversees state permitting of the project<br>Primary Point Contact for the Agency Communications Plan  | <a href="mailto:PrescottH@communityoffshorewind.com">PrescottH@communityoffshorewind.com</a><br>Phone: 617-970-0283   |
| Bryan Gray<br>State Permitting<br>Project Manager          | Oversees state permitting of the project<br>Primary Point Contact for the Agency Communications Plan  | <a href="mailto:BryanG@communityoffshorewind.com">BryanG@communityoffshorewind.com</a><br>Phone: 516-243-4120         |
| Rick Robins<br>Marine Affairs<br>Manager                   | Oversees marine affairs and commercial and recreational fisheries engagement of the project<br>Point of contact for the Fisheries Communications Plan                                 | <a href="mailto:RickR@communityoffshorewind.com">RickR@communityoffshorewind.com</a><br>Phone: 757-901-2675           |
| Deirdre Boelke<br>Fisheries Liaison                        | Commercial and recreational fisheries engagement<br>Primary point of contact for the Fisheries Communications Plan  | <a href="mailto:DeirdreB@communityoffshorewind.com">DeirdreB@communityoffshorewind.com</a><br>Phone: 978-518-0638     |

| Name/Title                                      | Role   | Contact Information   |
|---|--|---|
| Michelle Duval<br>Fisheries Liaison             | Commercial and recreational fisheries engagement<br>Point of contact for the Fisheries Communications Plan | <a href="mailto:MichelleD@communityoffshorewind.com">MichelleD@communityoffshorewind.com</a><br>Phone: 919-601-3798 |
| Natalie Terhaar<br>Community Engagement Manager | Primary point of contact for community engagement activities   | <a href="mailto:NatalieT@communityoffshorewind.com">NatalieT@communityoffshorewind.com</a><br>Phone: 716-228-5678   |
| Mariah Dignan<br>Labor Manager                  | Primary point of contact for labor engagement activities   | <a href="mailto:MariahD@communityoffshorewind.com">MariahD@communityoffshorewind.com</a><br>Phone: 516-913-3036     |

## **Appendix C Communications Plans**

### **Native American Tribes Communication Plan:**

Confidential, submitted to BOEM under separate cover.

### **Fisheries Communications Plan:**

<https://communityoffshorewind.com/-/media/Project/RWE/COffshoreWind/fisheries/COSW-fisheries-communications-plan-v2-2023-04-25.pdf>

### **Agency Communication Plan:**

<https://communityoffshorewind.com/-/media/Project/RWE/COffshoreWind/documents/agency-communications-plan-20230331.pdf>