



PROGRESS REPORT FOR OCS-A 0539

MAY 1, 2025 TO OCTOBER 31, 2025

Submission Date: 10/31/2025

Version: 1

Prepared Pursuant to Lease Addendum C Section 3

Prepared by: Community Offshore Wind, LLC

Executive Summary

Since the submittal of the previous Progress Report ending April 30, 2025, Community Offshore Wind (COSW) has continued the development of Lease Area Outer Continental Shelf (OCS)-A 0539 in a responsible manner. COSW's current scope of development activities has been reduced due to the ongoing review of offshore wind projects and lease areas. Despite the adjusted scope, COSW is committed to continued outreach with Tribes/Tribal Nations, commercial and recreational fisheries, federal and state agencies, and all other stakeholders, as appropriate for the current and forecasted project development intensity.

A summary of the engagement activities held with Tribes/Tribal Nations or other lessee's Tribal Relations Managers is provided in Section 2. A summary of stakeholder engagement is provided in Section 3, with Fisheries engagement presented in Section 3.1, Agency engagement presented in Section 3.2, and other stakeholder engagement presented in Section 3.3.

For additional information on the Project, please visit our website:

<https://communityoffshorewind.com/>.

Table of Contents

1	Purpose and Background.....	1
1.1	Purpose.....	1
1.2	Lessee Information.....	1
1.3	Lease Description.....	1
2	Tribes/Tribal Nations Engagement.....	3
2.1	Overall Tribes/Tribal Nations Engagement Progress Since Last Report.....	3
2.2	Identification of Potential Project Effects Related to Tribes/Tribal Nations Interests.....	3
2.3	Tribes/Tribal Nations Feedback on Export Cable Planning.....	3
2.4	Anticipated or Scheduled Tribes/Tribal Nations Engagement Activities	3
3	Engagement with Potentially Affected Parties.....	5
3.1	Summary of Commercial and Recreational Fisheries, Maritime, and Other Marine Users Engagement Activities	5
3.1.1	Overall Engagement Progress Since Last Report.....	5
3.1.2	Identification of Potential Project Effects Related to Parties.....	6
3.1.3	Feedback from Parties on Export Cable Planning	6
3.1.4	Anticipated or Scheduled Engagement Activities.....	11
3.2	Summary of Agency Engagement Activities	11
3.2.1	Overall Engagement Progress Since Last Report.....	11
3.2.2	Identification of Potential Project Effects Related to Parties.....	13
3.2.3	Anticipated or Scheduled Engagement Activities.....	13
3.3	Summary of Other Stakeholder Engagement Activities.....	14
3.3.1	Overall Engagement Progress Since Last Report.....	14
3.3.2	Identification of Potential Project Effects Related to Parties.....	14
3.3.3	Anticipated or Scheduled Engagement Activities.....	18
4	Survey Plan(s) Activities	19

Tables

Table 1	Engagement with Commercial and Recreational Fisheries Participants and Stakeholders During Reporting Period ^a	8
Table 2	Engagement with Agencies During Reporting Period	12
Table 3	Engagement with Other Parties During Reporting Period	15

Figures

Figure 1	Lease Area OCS-A 0539	2
----------	-----------------------------	---

List of Appendices

- Appendix A Tribes and Other Parties Relevant to the Project**
- Appendix B Lessee and Liaison Contact Information**
- Appendix C Communications Plans**

Acronyms and Abbreviations

ACP	American Clean Power
BOEM	Bureau of Ocean Energy Management
COP	Construction and Operations Plan
COSW	Community Offshore Wind
COSW Project (Project)	the Community Offshore Wind Project
NATCP	Native American Tribal Communication Plan
NYB	New York Bight
OCS	outer continental shelf
SCEMFIS	Science Center for Marine Fisheries
USEPA	United States Environmental Protection Agency

1 Purpose and Background

1.1 Purpose

In accordance with Lease Stipulation 3.1, Community Offshore Wind (COSW) must submit a Progress Report to the Bureau of Ocean Energy Management (BOEM) every six months, starting from the Effective Date on the Lease on through approval of the Construction and Operations Plan (COP). This report covers the seventh six-month period, from May 1, 2025 to October 31, 2025. The purpose of this Progress Report is to document overall project progress and engagement activities undertaken with Tribes/Tribal Nations, communities, ocean user groups, the general public, and other stakeholder groups throughout the reporting period, in addition to COSW's plans for continued engagement.

1.2 Lessee Information

Community Offshore Wind, LLC, a joint venture of RWE and National Grid, proposes to develop the COSW Project (COSW Project, Project), under the BOEM Commercial Lease of Submerged Lands for Renewable Energy Development on the Outer Continental Shelf (Lease Area OCS-A 0539; Lease Area).

Additional information about COSW can be found on our website:

<https://communityoffshorewind.com/>.

1.3 Lease Description

Lease Area OCS-A 0539 encompasses approximately 125,964 acres (50,976 hectares) and is located approximately 37 miles (32 nautical miles; 60 kilometers) from the closest point on land in New Jersey and approximately 64 miles (56 nautical miles; 104 kilometers) from the closest point on land in New York. Water depths within the Lease Area range from 98-171 feet (30-52 meters) mean lower low water. The location of Lease Area OCS-A 0539 is shown on Figure 1, below.

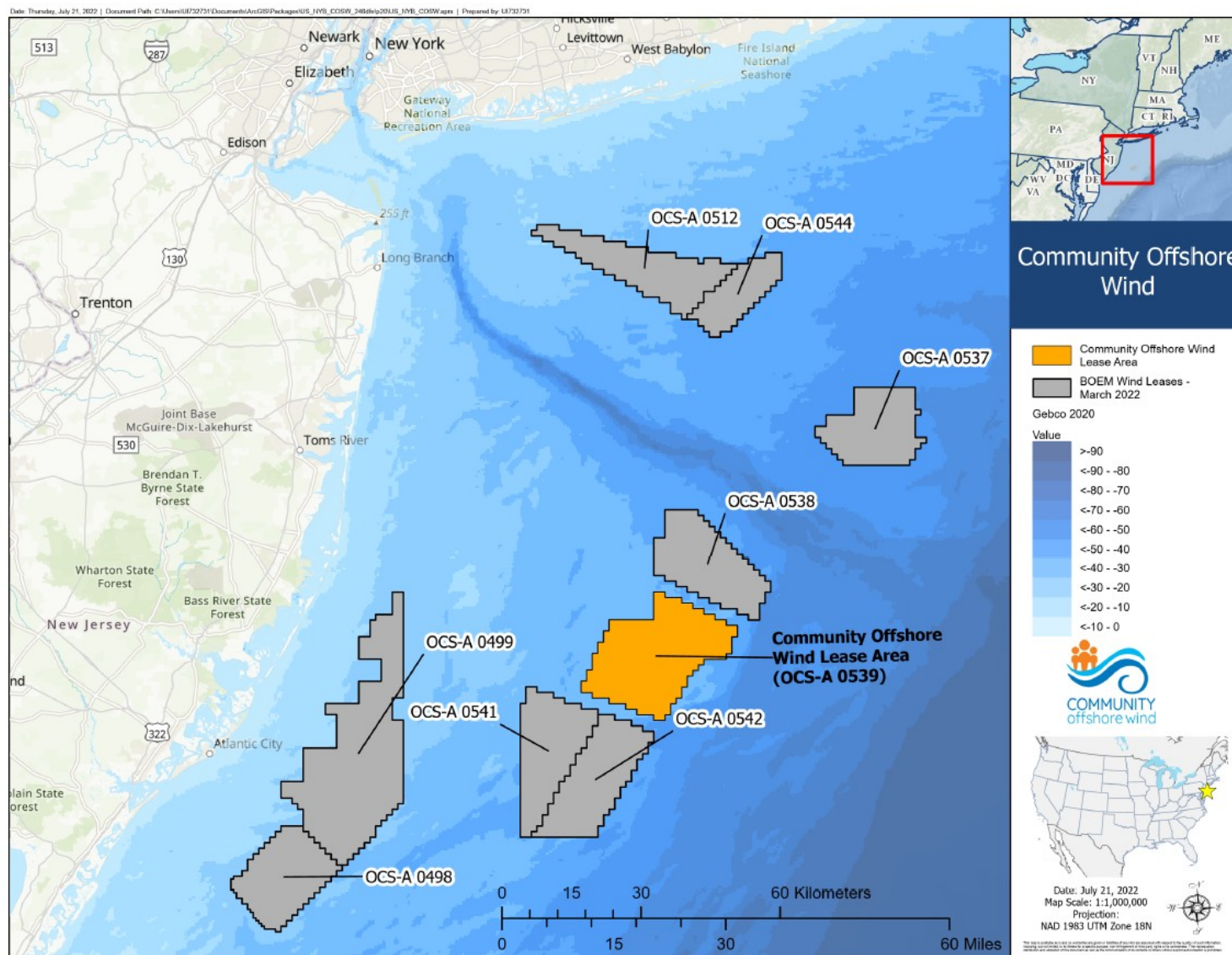


Figure 1 Lease Area OCS-A 0539

2 Tribes/Tribal Nations Engagement

COSW believes it is important to recognize Tribes/Tribal Nations as the original and continuing stewards of the lands and waters in which we work. We acknowledge and respect the enduring historical, cultural, and personal connections between Tribes/Tribal Nations to the region, both those Tribes/Tribal Nations currently residing in the region and those that were removed from it. We believe that the insights and knowledge of Tribes/Tribal Nations can and should play an important role in the clean energy transition, to help ensure that offshore renewable energy is developed in an environmentally, socially, and culturally sustainable manner.

A summary of engagement activities held and anticipated to be held over the next reporting period, with Tribes/Tribal Nations is provided in Section 2.1 through 2.4, below. These sections provide an overview of engagement with potentially affected federally recognized.

2.1 Overall Tribes/Tribal Nations Engagement Progress Since Last Report

Since the submission of the previous Progress Report, COSW has continued to engage with Tribes/Tribal Nation as we plan Project development activities, and adapt to regulatory changes, and policy shifts with respect to offshore wind. Engagement, at a level consistent with ongoing development activities will occur through the next reporting period.

The Joint New York Bight (NYB) Native American Tribal Communication Plan (NATCP) is being updated with the new contacts for lessees and will be placed on all developers' websites based on discussions with the other developers that are part of the Joint NATCP for the NYB.

2.2 Identification of Potential Project Effects Related to Tribes/Tribal Nations Interests

Tribes and Tribal Nations have previously expressed concerns to COSW about the limited time they typically have to review offshore wind project COPs and associated studies during BOEM's National Environmental Policy Act and National Historic Preservation Act reviews. They have repeatedly requested that offshore wind project developers provide them with an opportunity to review and comment on COP supporting study reports and offer feedback well before BOEM initiates its National Environmental Policy Act and National Historic Preservation Act reviews. Tribes and Tribal Nations believe that receiving these documents earlier and holding virtual or face-to-face meetings with Tribal representatives, offshore wind developers, and the developers' technical consultants to discuss study results will help address their capacity issues. Consequently, COSW plans to share COP supporting studies with Tribes and Tribal Nations concurrently when submitting the studies to BOEM.

2.3 Tribes/Tribal Nations Feedback on Export Cable Planning

COSW will reengage with Tribe/Tribal Nations to continue assessment of potential cable routes when appropriate considering the current pace of Project development

2.4 Anticipated or Scheduled Tribes/Tribal Nations Engagement Activities

During the next reporting period, COSW anticipates the following engagement:

- COSW will update the contact information for the Joint NATCP with the other developers.

3 Engagement with Potentially Affected Parties

COSW believes that coordination and engagement with all stakeholders is crucial to the success of an offshore wind project and is committed to a timely and consistent approach, ensuring the Project is developed in an environmentally, socially, and culturally sustainable manner for all. Starting prior to the effective date of Lease OCS-A 0539, COSW began to identify and engage with various types of stakeholders, identified as potentially interested in or affected by offshore wind and the Project. In support of the stakeholder engagement strategy, a list of stakeholders which are potentially applicable to the development, construction, and operations of an offshore wind farm in the NYB was developed and can be found in Appendix A. This list is intended to be a “living” document and will be updated throughout the process, as additional stakeholders are identified.

COSW has continued to reach out to stakeholders to introduce the Project and Project team, to provide an overview of the Project, and to solicit feedback. A summary of the engagement activities held with Commercial and Recreational Fisheries, Maritime, and other marine users is provided in Section 3.1, a summary of Agency engagement presented in Section 3.2, and a summary of other stakeholder engagement presented in Section 3.3.

3.1 Summary of Commercial and Recreational Fisheries, Maritime, and Other Marine Users Engagement Activities

3.1.1 Overall Engagement Progress Since Last Report

Since the submittal of the previous Progress Report, COSW had 57 direct engagements with fishery participants and stakeholders, as well as other maritime users. Engagements during this reporting period focused primarily on maintaining existing relationships with fisheries constituents, regulators, and researchers and new engagement focused on the development of the regional fisheries compensatory mitigation fund through participation on the Design Oversight Committee. The Project team continues to take a broad approach to engagement with a full range of potentially interested parties as detailed in Table 1. Engagement strategies included in-person meetings, text messages, phone and video calls, small group meetings, large group virtual and in-person meetings as well as attendance at technical working groups and industry forums.

COSW’s two Fisheries Technical Advisors/Fisheries Representatives continue to play an important role in engaging with and communicating the concerns and perspectives of their respective fisheries to the Project and had an additional 133 direct engagements during the reporting period. The Project team also attended various regional fishery management council and other fisheries-related meetings, both virtually and in-person, to maintain awareness of issues of importance to fisheries participants and stakeholders.

COSW is aware of the engagement burden on fisheries participants and fisheries, maritime, and other marine stakeholders. Exploring efficient and effective communication methods will remain a focus of our conversations throughout the lifetime of the Project.

COSW continued to participate in the American Clean Power (ACP) Fisheries Subcommittee (Fisheries Subcommittee) to coordinate within the industry on important fisheries considerations. COSW participates in the Fisheries Subcommittee’s biweekly virtual meetings, which serve as a broader forum for discussion and coordination on fisheries topics relevant to multiple regions. COSW

is also a member of ACP's Maritime Subcommittee, which meets regularly to discuss issues related to navigation, safety, and other maritime uses.

COSW has maintained active participation as the only offshore wind developer to join the membership of the Science Center for Marine Fisheries (SCMFIS), a National Science Foundation Industry/University Cooperative Research Center. The goal of this collaborative is to provide academic research products that address scientific needs and enhance fisheries management through engagement with industry partners. COSW has sponsored a project to explore the costs, logistical constraints, and policy implications of Atlantic surfclam (*Spisula solidissima*) hatchery and nursery siting, as well as reuse of optical benthic survey data to inform Atlantic surfclam distribution. COSW has continued working with the National Oceanic Atmospheric Administration National Marine Fisheries Service to advance the objectives of their joint Cooperative Research and Development Agreement through regular meetings to identify monitoring priorities and research questions that will support important elements of the National Oceanic Atmospheric Administration National Marine Fisheries Service/BOEM Federal Survey Mitigation Strategy.

A summary of the engagement activities held with commercial and recreational fisheries participants and fisheries, maritime, and other marine stakeholders is provided in Table 1, below. Please note that many engagement activities cover multiple topics and do not have a single focus.

3.1.2 Identification of Potential Project Effects Related to Parties

COSW continues to discuss potential Project effects raised by fisheries participants and fisheries, maritime, and other marine stakeholders during this reporting period:

- **Ecological:** Potential benefits to recreational fisheries and how to monitor changes in the recreational catch rates within the Project area.
- **Safety and Navigation:** The need for appropriate marking and lighting of turbine structures to promote safe navigation within and around lease areas.
- **Access and Economics:** Interest in potential economic impacts to shoreside processors and mechanisms or studies to support mitigation measures for this sector if it is impacted. This is being addressed through the multi-state effort to design a regional fisheries compensatory mitigation fund. Additional interest in opportunities to provide vessel services from the fishing industry to the future Project and related economics.

The Project team continues to integrate fisheries participant and stakeholder feedback into the overall Project development and is actively working to incorporate concerns identified during this and previous reporting periods into Project design and development.

3.1.3 Feedback from Parties on Export Cable Planning

COSW continues to plan final location of the export cable required to connect the Project to the electric grid. The Project team has incorporated local knowledge of important fishing areas and fisheries habitats from engagements with area fishing captains into the export cable planning process. COSW has continued to conduct outreach to subsea cable owners with assets in the offshore export cable planning area during the reporting period and previously engaged port authorities, pilot

associations, and other maritime users in the nearshore export cable planning area to identify concerns and inform development and future construction of export cable routes.

Table 1 Engagement with Commercial and Recreational Fisheries Participants and Stakeholders During Reporting Period^a

Focus of Discussion or Engagement	Party(ies)	Summary of Engagement Activities	Follow-up Actions, Activities, and Outcomes
Updates on Project	<u>All Parties</u> Commercial and Recreational fisheries participants and stakeholders; academic and research institutions and programs; state and federal agencies; resource survey managers; fisheries liaisons and representatives; regional fishery management councils	<ul style="list-style-type: none"> Overall updates on Project activities and timelines Ongoing engagement with fisheries participants, managers, and researchers 	<ul style="list-style-type: none"> Adjusted and streamlined meeting frequencies with stakeholders to reflect current level of activity.
Fisheries use patterns Emerging recreational fisheries within US Projects Project updates and offshore wind development nationally	<u>Recreational</u> Recreational fishermen; tackle or recreational industry; charter/for-hire fishermen; recreational fishing association	Direct communication and/or discussion of the following: <ul style="list-style-type: none"> Status of Project activities and potential effects of the January 20, 2025 Presidential Memorandum regarding Wind Projects on Project planning. Informed recreational fisheries stakeholders of Project reorganization and expected level of activity. Discussed emerging recreational fisheries within constructed offshore wind projects. 	<ul style="list-style-type: none"> Integrate feedback on fishing activities into Project’s understanding of local and regional fisheries. Provided future fisheries point-of-contact information.
Fisheries research and monitoring Economic opportunities for vessel services	<u>Commercial</u> Commercial fishermen; fleet owners/managers; vessel service providers, seafood processors	Direct communication and discussion of the following: <ul style="list-style-type: none"> Opportunities for commercial industry participation in future Project collaborative research and monitoring efforts. Status of Project survey, development, and engagement activities and potential effects of the January 20, 2025 Presidential Memorandum regarding Wind Projects on Project planning. Informed commercial fisheries stakeholders of Project reorganization and expected level of activity. Updates on vessel services activities and associated economic opportunities in other US projects. 	<ul style="list-style-type: none"> Integrate feedback on safety concerns activities into Project and COP. Integrate roles for industry into ongoing development of monitoring and research programs. Participate in regional initiatives to co-develop research ideas with industry. Continue to support development of Project’s vessel assurance process. Provided future fisheries point-of-contact information.

Focus of Discussion or Engagement	Party(ies)	Summary of Engagement Activities	Follow-up Actions, Activities, and Outcomes
<p>Regional monitoring approaches and standards</p> <p>Federal survey mitigation</p> <p>Regional fisheries compensation</p>	State and federal agencies	<p>Regular calls and other meetings with agency staff to share information and discuss topics including:</p> <ul style="list-style-type: none"> Continued engagement with the Northeast Fisheries Science Center on the Project's Cooperative Research and Development Agreement. Status of federal fisheries survey mitigation plans, and use of alternative methods and platforms (e.g., eDNA, hook-and-line surveys) for conducting fisheries resources surveys within offshore wind lease areas. Development of standards for project-level fisheries and socioeconomic monitoring, and data/information needs for cumulative impact assessment. Opportunities to incorporate resiliency in the ongoing approach to developing a regional fisheries compensatory mitigation plan. Progress of RFA and Design Oversight Committee on fisheries compensation fund development and engagement. Participation in collaboration efforts supported by states like NYSEERDA's F-TWG and M-TWG meetings. Informed fisheries agency stakeholders of Project reorganization and expected level of activity. 	<ul style="list-style-type: none"> Integration of feedback into development of Project's fishery resource monitoring and research framework. Continued tracking and feedback on NOAA Fisheries development of monitoring standards. Continued participation in regional fisheries compensation fund development through the ACP Fisheries Subcommittee. Adjustments to cadence of regular call schedules and Project points-of-contact. Continued participation in Design Oversight Committee to support the design of the regional fisheries compensatory mitigation fund.
<p>Existing monitoring approaches, research, and extension initiatives</p> <p>Monitoring plan design, methods, and tools</p> <p>Federal survey mitigation</p> <p>Opportunities for collaboration and partnerships</p>	Academic or research institutions and programs	<ul style="list-style-type: none"> Participated in working group and advisory body meetings of regional research collaboratives (RWSC, ROSA). Discussed regional data, research, and governance needs associated with monitoring plans. Participated in regular meetings of SCEMFIS industry/university research cooperative, attended semi-annual IAB meeting. Coordinated with primary investigators and IAB members regarding potential economic studies and will provide support for an upcoming economic study. Informed scientific fisheries stakeholders of Project reorganization and expected level of activity. 	<ul style="list-style-type: none"> Integrate feedback into ongoing development of Project's fisheries monitoring plan and future discussions regarding regional coordination of fisheries permitting, monitoring, and survey mitigation. Continued exploration and development of future collaborative opportunities with commercial and recreational fishing industries. Continued support of proposed project for consideration at SCEMFIS annual IAB meeting.
Project update	RFMC	<ul style="list-style-type: none"> Provided MAFMC staff with an update on the Project and the industry and development of compensatory plans through East Coast and West Coast initiatives. 	<ul style="list-style-type: none"> Continued tracking of NOAA's monitoring and general Project updates as future topics.
<p>Project updates and industry perspectives</p> <p>Navigational safety</p> <p>Vessel assurance</p> <p>Mitigation guidance</p>	Fisheries liaisons; fisheries representatives	<ul style="list-style-type: none"> Team calls to discuss Project development and industry perspectives. Discussed fishery conditions within regional gillnet (monkfish, dogfish, skate species) fisheries, and status of scallop resources. Discussed industry interest in offshore wind opportunities, availability of safety training classes, vessel assurance and potential for assistance to meet future certification requirements. Discussed updates on the activities related to the Regional Fund Administrator's outreach to support the design of the regional fisheries compensatory mitigation fund Discussed Project reorganization, points-of-contact, and expected levels of engagement. 	<ul style="list-style-type: none"> Continue to support Project's vessel assurance process and integrate feedback on required certifications and training into program development. Continue to identify future economic opportunities for vessels services from the fishing industry for the Project.

Focus of Discussion or Engagement	Party(ies)	Summary of Engagement Activities	Follow-up Actions, Activities, and Outcomes
Project design and cable routing	Marine commercial operators; subsea cable asset owners	<ul style="list-style-type: none">• Outreach to cable asset owners to discussplanned subsea cable activities planned within the Project area to discuss deconfliction and coordination.	<ul style="list-style-type: none">• Integrate feedback into Project and COP development.• Provided updates regarding survey activities and anticipated Project development timelines.

Notes:

^a The engagement activities listed within this table are from November 1, 2024 to April 30, 2025. The next Progress Report will include engagement activities from May 1, 2025 through October 31, 2025.

BOEM = Bureau of Ocean Energy Management; COP = Construction and Operations Plan; COSW = Community Offshore Wind; eDNA = environmental deoxyribonucleic acid; IAB = Industry Advisory Board; F-TWG = Fisheries Technical Working Group; MAFMC = Mid-Atlantic Fishery Management Council; M-TWG = Maritime Technical Working Group; NOAA = National Oceanic Atmospheric Administration; NOAA Fisheries = National Oceanic Atmospheric Administration National Marine Fisheries Service; NYSERDA = New York State Energy Research and Development Authority; Project = COSW Project, Community Offshore Wind Project; RFA = Regional Fund Administrator; RFMC = Regional Fishery Management Council; ROSA = Responsible Offshore Science Alliance; RWSC = Regional Wildlife Science Collaborative; SCEMFIS = Science Center for Marine Fisheries; US = United States

3.1.4 Anticipated or Scheduled Engagement Activities

COSW is committed to maintaining engagement with all interested and affected fisheries stakeholders, even while the pace of Project development has changed. During the next reporting period, COSW anticipates the following engagement:

- COSW will continue outreach and coordination with fisheries stakeholders, fishery managers, subsea asset owners, maritime industry operators, and the United States Coast Guard, as the Project continues to maintain its stakeholder relationships in advance of future Project development.
- COSW will continue to support the development of a comprehensive regional fisheries compensatory mitigation fund through its participation in the ACP Fisheries Subcommittee and the Regional Fund Administrator Design Oversight Committee.
- COSW will continue to participate in ACP's Fisheries Subcommittee and work groups and will continue informal coordination with other NYB developers to promote efficient regional engagement approaches where appropriate.
- COSW will continue to develop its monitoring and research framework in collaboration with federal fisheries agency partners, which includes exploration of coordinated regional monitoring and federal survey mitigation approaches with other lessees and development of opportunities for interested fisheries participants.
- COSW will continue to engage with representatives of the commercial and recreational fishing industries to improve coordination and communication.

3.2 **Summary of Agency Engagement Activities**

3.2.1 Overall Engagement Progress Since Last Report

Since the submittal of the previous Progress Report, COSW held one inter-agency meeting, which provided an opportunity for agencies to hear from the Project team, receive an update on the Project, share important information, and provide feedback and recommendations. Due to the current scale and pace of Project development, this meeting was intended to supplement regular engagement with individual agencies. COSW regularly engaged with BOEM, meeting on an as-needed basis.

A summary of the engagement activities held with agencies is provided in Table 2, below.

Table 2 Engagement with Agencies During Reporting Period

Focus of Discussion or Engagement	Party(ies)	Summary of Engagement Activities	Follow-up Actions, Activities, and Outcomes
Regular Meetings held with BOEM	BOEM	Regularly scheduled meetings were held with BOEM to discuss the development of the Lease Area and relevant Lease Stipulations. Specifically, COSW discussed the status of the anticipated Project timeline, impacts of the January 20, 2025 Presidential Memorandum regarding Wind Projects on the offshore wind industry and other recent Secretarial Orders, among other items.	COSW to continue providing BOEM with regular Project updates.
Interagency Project Meeting	BOEM, NOAA, NPS, USACE, USCG, USEPA, USFWS, NJDEP, NYSDEC, NYSDOS, NYSDOT, NYSDPS, NYSOPRHP	COSW shared an update on the Project and sought feedback from attendees. The meeting was held virtually on June 23, 2025. COSW communicated that if there are no changes to Project development an email update may be distributed instead of hosting a meeting.	COSW to determine if an interagency meeting is warranted for December

Notes:
BOEM = Bureau of Ocean Energy Management; COSW = Community Offshore Wind; NOAA = National Oceanic Atmospheric Administration; NJDEP = New Jersey Department of Environmental Protection; NPS = National Park Service; ; NYSDEC = New York State Department of Environmental Conservation; NYSDOS = New York State Department of State; NYSDOT = New York State Department of Transportation; NYSDPS = New York State Department of Public Service; NYOPRHP= New York State Office of Parks, Recreation, and Historic Preservation; Project = COSW Project, Community Offshore Wind Project; USACE = United States Army Corps of Engineers; USCG = United States Coast Guard; USEPA = United States Environmental Protection Agency; USFWS = United States Fish and Wildlife Service

3.2.2 Identification of Potential Project Effects Related to Parties

One potential effect related to the Project or Project activities was raised by the United States Environmental Protection Agency (USEPA) for COSW consideration during this reporting period. The USEPA noted that if the Project is required to get an Air Permit from USEPA, there is a United States Fish and Wildlife Service Class I Wilderness at E.B Forsythe National Wildlife Refuge. It is located on the New Jersey coast North of Atlantic City and will require additional analysis as part of the air permit.

3.2.3 Anticipated or Scheduled Engagement Activities

During the next reporting period, COSW anticipates the following engagement:

- COSW will continue to meet with BOEM to provide Project updates.
- COSW will host a regular bi-annual inter-agency meeting in December 2025/January 2026 if new or substantive information regarding Project development is available. Alternatively, COSW will notify agencies via email that there are no updates.
- COSW will continue engagement with the agencies to discuss protocols and methodologies for resource assessments to be developed in support of the COP, as dictated by Project development activities.

3.3 Summary of Other Stakeholder Engagement Activities

As noted in Lease Stipulation 3.1.1, COSW also engaged with other stakeholder parties that may be potentially affected by Project activities on the OCS, which include, but are not limited to, the following:

- Coastal communities;
- Educational and research institutions;
- Environmental and public interest non-governmental organizations;
- Ocean users;
- Submarine cable operators; and,
- Underserved communities.

3.3.1 Overall Engagement Progress Since Last Report

COSW has continued outreach to a variety of stakeholders across our Project geography. Engagement strategies included phone and video calls, attendance at events, and trade shows. The Project team continues to take a broad approach to engagement with stakeholders in order to meet them where they are, leveraging opportunities for sponsorship and participation in local workforce and labor, environmental, educational, community, business and industry, and volunteerism events, based on current development activities.

A summary of the engagement activities held with stakeholders is provided in Table 3, below. The primary focus of most meetings is to introduce COSW and provide regular updates on our progress.

3.3.2 Identification of Potential Project Effects Related to Parties

COSW has identified several categories of potential Project effects raised by stakeholders:

- **Ecological:** Potential effects of cable electromagnetic field; effects of survey equipment and construction on marine wildlife.
- **Workforce:** Raised the need for wraparound services to support workforce development and access to job and contract opportunities, including for the justice-involved and formerly incarcerated.
- **Traffic:** Concerns regarding the impacts on traffic during onshore construction associated with offshore wind projects.

Table 3 Engagement with Other Parties During Reporting Period

Focus of Discussion or Engagement	Date(s)	Party(ies)	Role/Summary of Engagement Activities	Follow-up Actions, Activities, and Outcomes
NYCEDC Offshore Wind & Maritime Career and Awareness Fair	5/9/2025	NYCEDC	Sponsor, tabling, engaged attendees	Continuing engagement with host organization and interested attendees
Local 66 Golf Outing	5/19/2025	Local 66 Union	Attendee	Continuing engagement with host organization
Cornell Industrial Labor Relations School-Reunion	5/22/2025	Union Leadership Institute	Attendee	Continuing engagement with host organization
Offshore Wind Conference	5/27-29/2025	National Electrical Contractors Association and IBEW	Attendee	Continuing engagement with host organization and interested attendees
NYSERDA Offshore Wind Environmental Justice Working Group Meeting	6/5/2025	NYSERDA	Working group member	Continuing engagement with host organization
IUPAT DC 9 Golf Outing	6/16/2025	IUPAT DC 9	Attendee	Continuing engagement with host organization and interested attendees
Annual Luncheon	6/5/2025	Nontraditional Employment for Women	Attendee	Continuing engagement with host organization and interested attendees
Stakeholder Meeting with Joe Azzopardi	7/2/2025	IUPAT DC 9	Update meeting	Continuing engagement with host organization
NYSERDA Offshore Wind Jobs & Supply Chain Working Group Meeting	7/8/2025	NYSERDA	Working group member	Continuing engagement with host organization

Focus of Discussion or Engagement	Date(s)	Party(ies)	Role/Summary of Engagement Activities	Follow-up Actions, Activities, and Outcomes
Golf Reception	7/28/2025	LIA	Attendee	Continuing engagement with host organization and interested attendees
NYSERDA Offshore Wind Environmental Justice Working Group Meeting	7/31/2025	NYSERDA	Working group member	Continuing engagement with host organization
Annual Summer Meeting	8/5-7/2025	NYS Building and Construction Trades Council	Attendee	Continuing engagement with host organization and interested attendees
Suffolk Business Agents Luncheon	8/14/2025	Building and Construction Trades Council of Nassau and Suffolk Counties	Attendee	Continuing engagement with host organization and interested attendees
NYSERDA Offshore Wind Jobs & Supply Chain Working Group Meeting	8/26/2025	NYSERDA	Working group member	Continuing engagement with host organization
Labor Day Parade	9/6/2025	NYC Central Labor Council	Attendee	Continuing engagement with host organization and interested attendees
Farm Dinner 2025	9/17/2025	Red Hook Initiative	Attendee/Engaged attendees	Continuing engagement with host organization
Climate Week Event	9/23/2025	Climate Jobs National Resource Center	Attendee	Continuing engagement with host organization and interested attendees
Barbecue and Blood Drive Event	9/25/2025	Laborers Local 66	Attendee	Continuing engagement with host organization and interested attendees

Focus of Discussion or Engagement	Date(s)	Party(ies)	Role/Summary of Engagement Activities	Follow-up Actions, Activities, and Outcomes
NYLCV NYC Cocktail Party	9/30/2025	NYLCV	Sponsor	Continuing engagement with host organization and interested attendees
Golf Outing	10/3/2025	IBEW Local 25	Sponsor	Continuing engagement with host organization and interested attendees
We Act 2025 Gala	10/14/2025	We Act for Environmental Justice	Attendee/Engaged attendees	Continuing engagement with host organization and interested attendees
New York State Offshore Wind Academic Symposium 2025	10/15/2025	NYSERDA	Engaged attendees	Continuing engagement with host organization and interested attendees
NYSERDA Offshore Wind Environmental Justice Working Group Meeting	10/21/2025	NYSERDA	Working group member	Continuing engagement with host organization
ACE NY Fall Reception	10/22-10/23/2025	ACE NY	Sponsor	Continuing engagement with host organization and interested attendees
AMSEAS Night at the Ocean	10/23/2025	AMSEAS	Engaged attendees	Continuing engagement with host organization and interested attendees

Notes:

ACE NY = Alliance for Clean Energy New York; AMSEAS = Atlantic Marine Conservation Society; IBEW = International Brotherhood of Electrical Workers; IUPAT DC = International Union of Painters and Allied Trades, District Council; LIA = Long Island Association; NY = New York; NYC = New York City; NYCEDC = New York City Economic Development Corporation; NYLCV = NY League Conservation Voters; NYS = New York State; NYSERDA = New York State Energy Research and Development Authority;

3.3.3 Anticipated or Scheduled Engagement Activities

During the next reporting period, COSW anticipates the following engagement:

- COSW will perform outreach to stakeholder groups, included but not limited to federal, state, and local government stakeholders, labor unions, community, and environmental groups as needed.
- COSW will maintain relationships within the communities our Project may affect.

4 Survey Plan(s) Activities

No survey activities occurred since the submittal of the last Progress Report and no survey activities will occur in 2025.

Appendix A Tribes and Other Parties Relevant to the Project

Table A-1 Tribes and Tribal Nations Relevant to the Project

Name of Tribe	Party Type(s)
Absentee-Shawnee Tribe of Indians of Oklahoma	FTribe
Delaware Nation	FTribe
Delaware Tribe of Indians	FTribe
Eastern Shawnee Tribe of Oklahoma	FTribe
Mashantucket Pequot Tribal Nation	FTribe
Mashpee Wampanoag Tribe	FTribe
Mohegan Tribe of Indians of Connecticut	FTribe
Narragansett Indian Tribe	FTribe
Shawnee Tribe	FTribe
Shinnecock Indian Nation	FTribe
Stockbridge-Munsee Community Band of Mohican Indians	FTribe
Wampanoag Tribe of Gay Head-Aquinnah	FTribe
Nanticoke Lenni-Lenape Tribal Nation	STribe
Powhatan Renape Nation	STribe
Ramapough Lenape Nation	STribe
Unkechaug Nation	STribe

Notes:

FTribe = Federally Recognized Tribe; STribe = State Recognized Tribe

Table A-2 Parties Relevant to the Project

Name of Party	Party Type(s)
<i>Commercial and Recreational Fishing</i>	
Commercial Scallop Fishery	CFish
Commercial Surfclam Fishery	CFish
Commercial Gillnet Fishery (Monkfish, Dogfish)	CFish
Commercial Lobster Fishery	CFish
Commercial Trawl Fishery	CFish
Commercial Longline Fishery (Tilefish)	CFish
Commercial Fishing Associations	CFish
Commercial Seafood Processors	CFish
Commercial Industry Services	CFish
NY For-hire Headboat Fisheries	RFish
NJ For-hire Headboat Fisheries	RFish
NY For-hire Charter Boat Fisheries	RFish
NJ For-hire Charter Boat Fisheries	RFish
NY Private Recreational Anglers	RFish
NJ Private Recreational Anglers	RFish
NY Recreational Fishing Organizations	RFish
NJ Recreational Fishing Organizations	RFish
NY Recreational Bait and Tackle Shops or Industry	RFish
NJ Recreational Bait and Tackle Shops or Industry	RFish
Regional Fishery Management Councils	RFMC
New England Fishery Management Council	RFMC
Mid-Atlantic Fishery Management Council	RFMC
Atlantic States Marine Fisheries Commission	RFMC
Academic and Research Institutions or Programs	ERI
Responsible Offshore Development Alliance	CFish
<i>Federal and State Agencies</i>	
BOEM	FA
BSEE	FA
USACE	FA
NOAA Fisheries	FA
USEPA	FA
USFWS	FA
USCG	FA
DoD	FA
NPS	FA

Name of Party	Party Type(s)
NYSDOS	SA
NYSDEC	SA
NYSDPS	SA
NYSDOT	SA
NJDEP	SA
Connecticut Department of Energy and Environmental Protection	SA
Rhode Island Department of Environmental Management	SA
Massachusetts Division of Marine Fisheries	SA
Maryland Department of Natural Resources	SA
Delaware Department of Natural Resources and Environmental Control	SA
North Carolina Division of Marine Fisheries	SA
Virginia Marine Resources Commission	SA
<i>Other Ocean Users</i>	
NYB Subsea Cable Owners and Operators	SCO
North Atlantic Submarine Cable Association	SCO
National Environmental Non-governmental organizations (NGOs)	NGO
NY Environmental NGOs	NGO
NJ Environmental NGOs	NGO
Oceana	NGO
Citizens Campaign for the Environment	NGO
The Nature Conservancy	NGO
Defenders of Wildlife	NGO
National Wildlife Federation	NGO
Sierra Club	NGO
Natural Resources Defense Council	NGO
National Audubon Society	NGO
Surfrider Foundation	NGO
Wildlife Conservation Society	NGO
NY League of Conservation Voters	NGO
NJ League of Conservation Voters	NGO
Scenic Hudson	NGO
Riverkeeper	NGO
Waterfront Alliance	NGO
RETI Center	NGO
Local Initiatives Support Corporation NY	NGO
Environment NJ	NGO
Sustainable NJ	NGO
Coalition of Environmentally Responsible Economies	NGO

Name of Party	Party Type(s)
NY Environmental Justice Groups	EJG
Long Island Environmental Justice Groups	EJG
Brooklyn Environmental Justice Groups	EJG
NY Environmental Justice Groups	EJG
Staten Island Environmental Justice Groups	EJG
NJ Environmental Justice Groups	EJG
Monmouth County Environmental Justice Groups	EJG
Ocean County Environmental Justice Groups	EJG
WE ACT	EJG
UPROSE	EJG
Academic and Research Institutions or Programs	ERI
NY Community Colleges	ERI
NJ Community Colleges	ERI
State University New York	ERI
Stony Brook University	ERI
Cornell University	ERI
Rutgers, The State University of New Jersey	ERI
Monmouth University	ERI
NYSERDA	ERI
NJ Research and Monitoring Initiative	ERI
Regional Wildlife Science Collaborative	ERI
Responsible Offshore Science Alliance	ERI
National Offshore Wind Research and Development Consortium	ERI
NY Marine Rescue Center	ERI
NY Aquarium	ERI
Industry Groups	IG
American Clean Power	IG
Business Network for Offshore Wind	IG
Maritime Industry/Mariners	M
American Waterways Operators	M
World Shipping Council	M
State Working Groups	SWG
NYSERDA Environmental Technical Working Group	SWG
NYSERDA Fisheries Technical Working Group	SWG
NYSERDA Maritime Technical Working Group	SWG
NJ Environmental Resources Offshore Wind Working Group	SWG
Chambers of Commerce	Ccom
NJ Chamber of Commerce	Ccom

Name of Party	Party Type(s)
Brooklyn Chamber of Commerce	Ccom
Staten Island Chamber of Commerce	Ccom
Long Beach Chamber of Commerce	Ccom
NJ African American Chamber of Commerce	Ccom
NJ Sustainable Business Council	Ccom
Orange County Partnership	Ccom
Workforce Development Agencies	WDA
NY Community Based Organizations	CG
Spin The Yard	CG
Billion Oyster Project	CG
NYC Parks Stewardship	CG
BOC Network, Inc.	CG
Southwest Brooklyn Industrial Development Corporation	CG
Long Island Progressive Coalition	CG
The Wilkins Group	CG
NJ Community Based Organizations	CG
NY Coastal Communities	CC
Long Island Coastal Communities	CC
Brooklyn Coastal Communities	CC
NYC Coastal Communities	CC
Staten Island Coastal Communities	CC
NJ Coastal Communities	CC
Monmouth County Coastal Communities	CC
Ocean County Coastal Communities	CC
NY Underserved Communities	UC
Long Island Underserved Communities	UC
Brooklyn Underserved Communities	UC
NYC Underserved Communities	UC
Staten Island Underserved Communities	UC
NJ Underserved Communities	UC
Monmouth Underserved Coastal Communities	UC
Ocean County Underserved Communities	UC
NY Labor Unions	LU
NJ Labor Unions	LU
NY State Building and Construction Trades Council	LU
NJ State Building and Construction Trades Council	LU
NY State American Federation of Labor and Congress of Industrial Organizations	LU
NJ State American Federation of Labor and Congress of Industrial Organizations	LU

Name of Party	Party Type(s)
Long Island Federation of Labor	LU
Hudson Valley Building and Construction Trades	LU
Western NY Area Labor Federation	LU

Notes:

BOEM = Bureau of Ocean Energy Management; BSEE = Bureau of Safety and Environmental Enforcement; CC = Coastal Community; Ccom = Chambers of Commerce ; CFish = Commercial Fishing Industry ; CG = Community Group; DoD = Department of Defense; EJG = Environmental Justice Groups; ERI = Educational and Research Institutions; FA = Federal Agency; FTribes = Federally Recognized Tribes; IG = Industry Group; LU = Labor Union; M = Maritime Industry/Mariners; NGO = Non-Governmental Organizations; NJ = New Jersey; NJDEP = New Jersey Department of Environmental Protection; NOAA Fisheries = National Oceanic Atmospheric Administration National Marine Fisheries Service; NPS = National Park Service; NY = New York; NYB = New York Bight; NYC = New York City; NYSDEC = New York State Department of Environmental Conservation; NYSDOS = New York State Department of State; NYSDOT = New York State Department of Transportation; NYSDPS = New York State Department of Public Service; NYSERDA = New York State Energy Research and Development Authority; RETI = Resilience, Education, Training, and Innovation; RFish = Recreational Fishing Industry; RFMC = Regional Fishery Management Councils and Commissions; SA = State Agency; SCO = Submarine Cable Operators; STribes = State Recognized Tribes; SWG = State Working Group; UC = Underserved Community; USACE = United States Army Corps of Engineers; USCG = United States Coast Guard; USEPA = United States Environmental Protection Agency; USFWS = United States Fish and Wildlife Service; WDA = Workforce Development Agencies

Appendix B Lessee and Liaison Contact Information

Table B-1 Community Offshore Wind Points of Contact

Name/Title	Role	Contact Information
Daniel Sieger President	Leads Project direction and scope.	DanS@communityoffshorewind.com Phone: 857-472-3459
Bryan Gray Development Director	Oversees permitting, environmental affairs, marine affairs, fisheries, and community engagement	BryanG@communityoffshorewind.com Phone: 516-243-4120
Amanda Mayhew Federal Permitting Manager	Oversees federal permitting of the Project, primary point contact for the Agency Communications Plan, primary point of contact for the Native American Tribal Communications Plan	Amanda.Mayhew@rwe.com Phone: 804-536-8002
Nahid Carter State Permitting Manager	Oversees state permitting of the Project, primary point Contact for the Agency Communications Plan	NahidC@communityoffshorewind.com Phone: 646-589-5702
Rick Robins Marine Affairs Manager	Oversees marine affairs and commercial and recreational fisheries engagement of the Project, point of contact for the Fisheries Communications Plan	RickR@communityoffshorewind.com Phone: 757-901-2675
Retha Fernandez	Primary point of contact for community engagement.	RethaF@communityoffshorewind.com Phone: 516-312-4794

Appendix C Communications Plans

Native American Tribes Communication Plan:

<https://communityoffshorewind.com/-/media/Project/RWE/COffshoreWind/homepage/new-york-bight-joint-native-american-tribes-communications-plan.pdf>

Fisheries Communications Plan:

<https://www.communityoffshorewind.com/-/media/Project/RWE/COffshoreWind/fisheries/cosw-fisheries-communications-plan.pdf>

Agency Communication Plan:

<https://communityoffshorewind.com/-/media/Project/RWE/COffshoreWind/documents/agency-communications-plan.pdf>