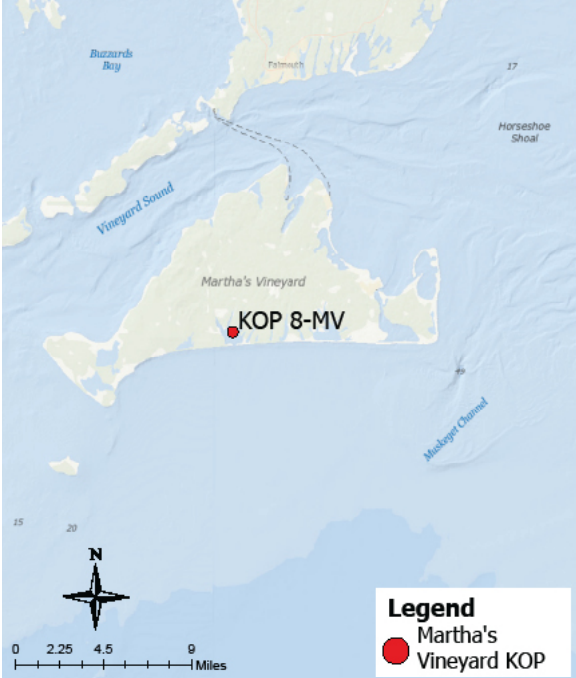


Panoramic Photograph



The sheet should be viewed on a 24 inch monitor scaling the red square to 11" x 17". To view the area outside of the red square, pan the surrounding panoramic image maintaining the 11" x 17" size within the red square.

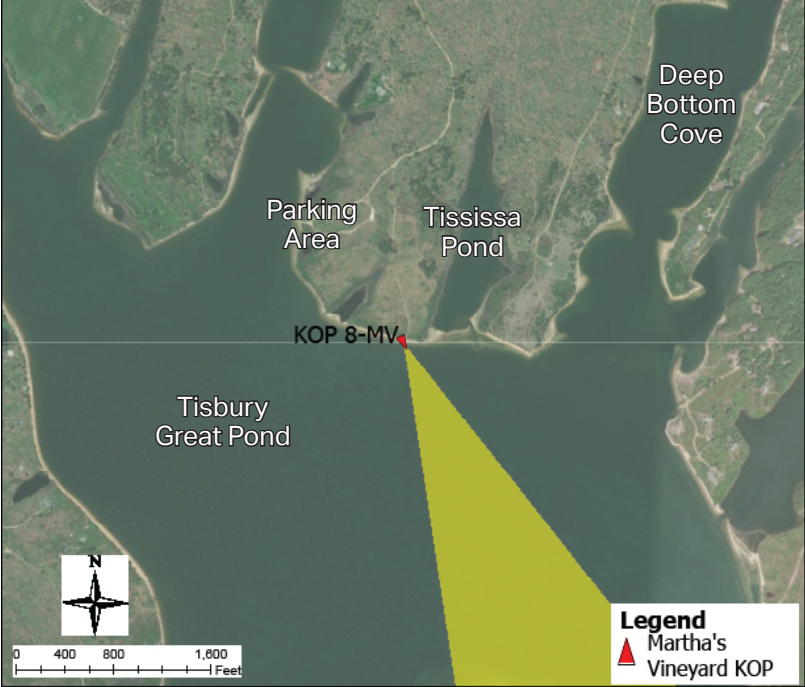
Baseline Conditions Map



Photograph Information

Location		Project View	
Viewpoint Location	Tississa Pond Beach	Horizontal Field of View	147.2°
Date of Photograph	6/17/21	Horizontal FOV Occupied	17.8°
Seascape/Landscape Character Area	Salt ponds/tidal marsh	Vertical Field of View	39.6°
Time of Photograph	6:15 pm	Viewing Direction	171°
Latitude	41°21'27.65"N	Elevation+Tripod Height:	10.5 Feet
Longitude	70°39'6.14"W	Camera Settings:	
Environment		Camera Model	Nikon D4
Temperature	69°F	fstop	f/14
Percent Humidity	49%	ISO	720
Wind Direction & Speed	WSW 10 mph	Shutter (seconds)	1/3200
Weather Condition	Partly Cloudy		
Tidal Height	Low		
Sun Angle	Side-Lit		
Sun Elevation	20.43°		

Context Map



Access
Public beach recreation
Adjacent Amenities
Parking Area
Adjacent SLCAs
Salt ponds/tidal marshes, coastal scrub bush, ocean beach, open ocean, very low density residential structures
Adjacent KOPs
MV07 Tississa Pond Hiking Trail, MV05 Long Point Beach

KOP-MV08 | Tississa Pond Beach | Beacon Wind Project

Baseline Conditions Overview



Time of Day: Evening
Weather Condition: Partly Cloudy
Image: Pre-Project Construction

The sheet should be printed at 11 x 17 inches; full size with no scaling; and viewed at arm's length (24 inches). If viewed on a computer monitor, the document should be viewed on a 24 inch monitor and scaled to 100 percent in Adobe Acrobat at arm's length (24 inches).

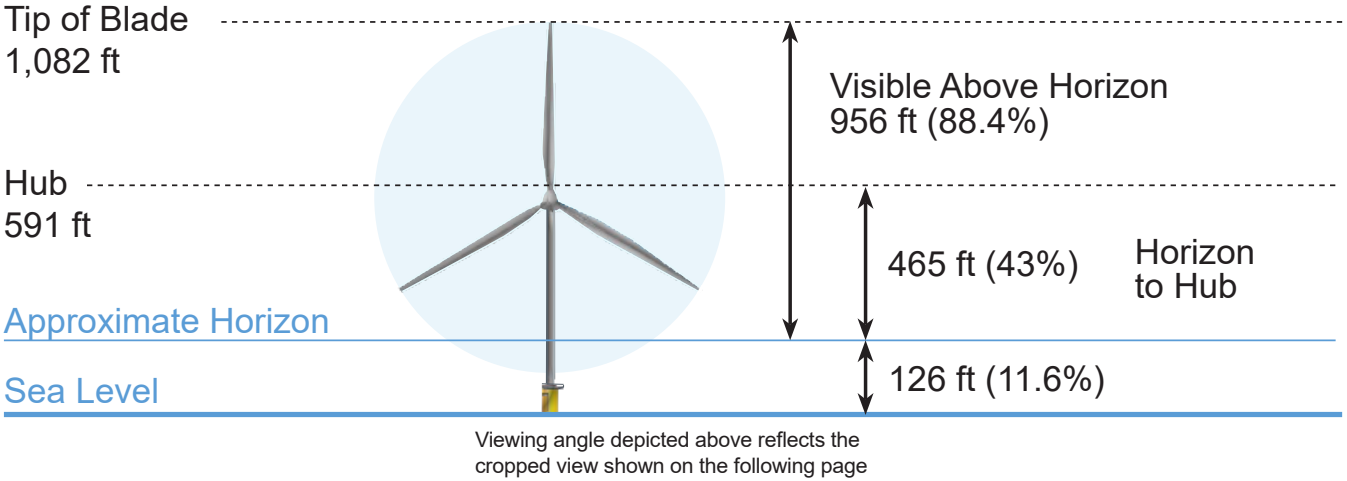
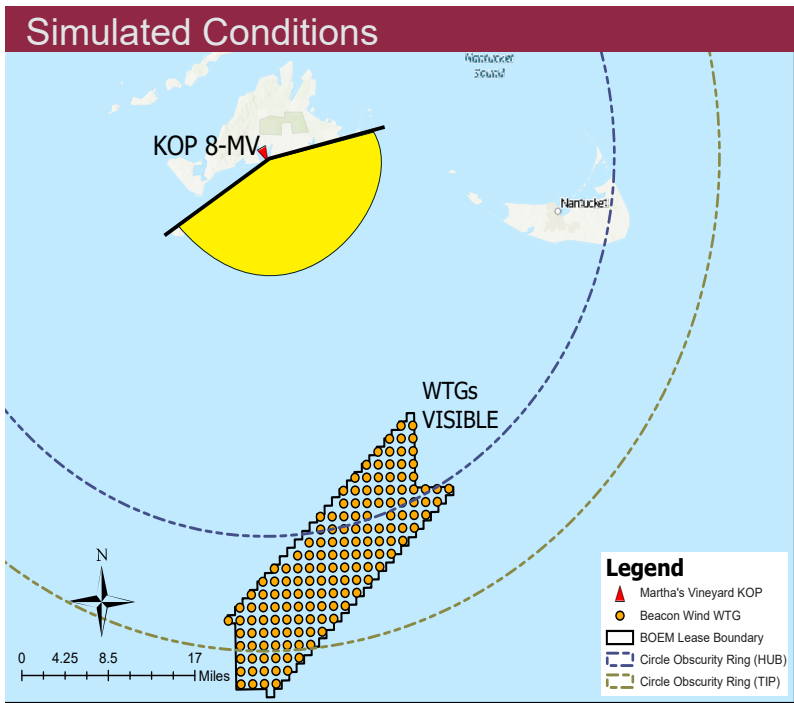
KOP-MV08 | Tississa Pond Beach | Beacon Wind Project

Baseline Conditions

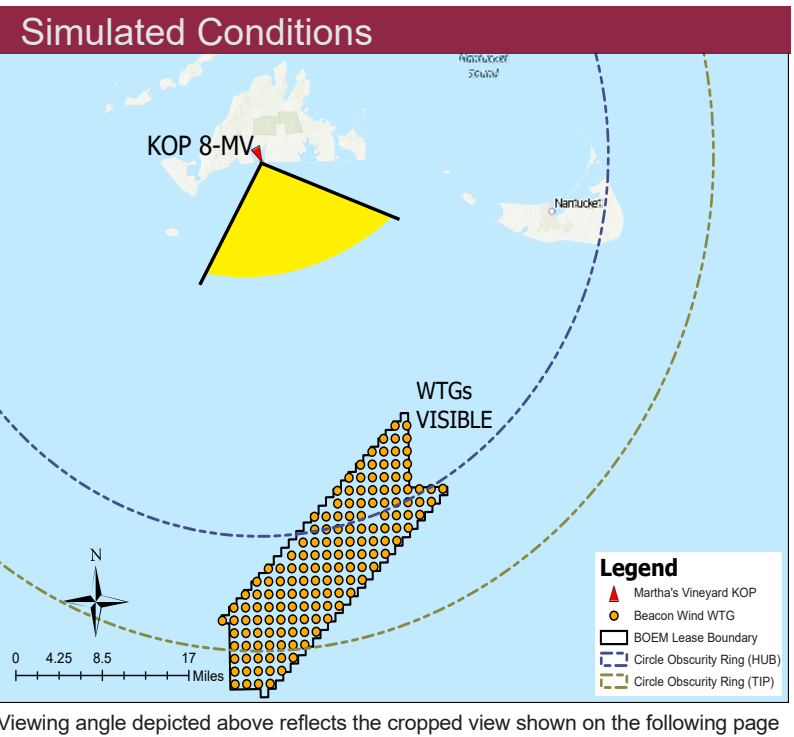
Panoramic Photograph



The sheet should be viewed on a 24 inch monitor scaling the red square to 11" x 17". To view the area outside of the red square, pan the surrounding panoramic image maintaining the 11" x 17" size within the red square.



Simulated Conditions Turbine Data	
Turbine Data	
Closest Visible WTG	27.81 miles
Furthest Visible WTG	47.73 miles
Structures Potentially Visible	133
Structures Potentially Not Visible	22



KOP-MV08 | Tississa Pond Beach | Beacon Wind Project

Simulated Conditions Overview



BEACON WIND PROJECT

Time of Day: Evening
Weather Condition: Partly Cloudy
Image: Pre-Project Construction

The sheet should be printed at 11 x 17 inches; full size with no scaling; and viewed at arm's length (24 inches). If viewed on a computer monitor, the document should be viewed on a 24 inch monitor and scaled to 100 percent in Adobe Acrobat at arm's length (24 inches).