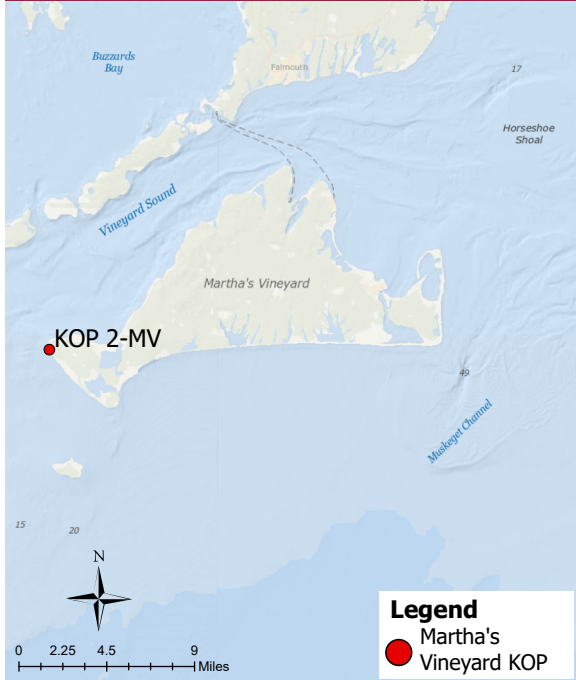


Panoramic Photograph



The sheet should be viewed on a 24 inch monitor scaling the red square to 11" x 17". To view the area outside of the red square, pan the surrounding panoramic image maintaining the 11" x 17" size within the red square.

Baseline Conditions Map

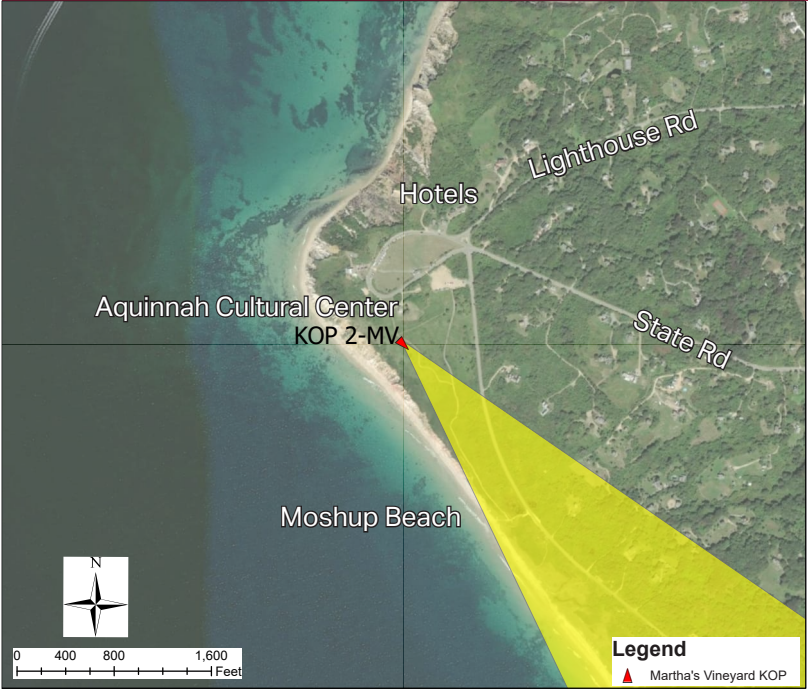


Photograph Information

Location	
Viewpoint Location	Aquinnah Cultural Center
Date of Photograph	3/3/22
Seascape/Landscape Character Area	Agricultural/Open Fields
Time of Photograph	1:35 pm
Latitude	41° 20' 45.53"N
Longitude	70°50'7.98"W
Environment	
Temperature	42° F
Percent Humidity	41%
Wind Direction & Speed	NW 17 mph
Weather Condition	Hazy
Tidal Height	Mid
Sun Angle	Back-lit
Sun Elevation	36.89°

Project View	
Horizontal Field of View	135.8°
Horizontal FOV Occupied	37.8°
Vertical Field of View	39.6°
Viewing Direction	136°
Elevation+Tripod Height:	92.5 Feet
Camera Settings:	
Camera Model	Nikon D750
fstop	f/11
ISO	200
Shutter (seconds)	1/500

Context Map



Access
Public recreation
Adjacent Amenities
Gift shops, restaurants, restroom facilities, paved roads and parking
Adjacent SLCAs
Ocean beach, open ocean, coastal bluffs, coastal scrub bush, low density residential structures
Adjacent KOPs
KOP-MV01 Aquinnah Cliffs Overlook, KOP-MV12 Gay Head Lighthouse

KOP-MV02 | Aquinnah Cultural Center | Beacon Wind Project

Baseline Conditions Overview





Time of Day: Afternoon  
Weather Condition: Hazy  
Image: Pre-Project Construction

*The sheet should be printed at 11 x 17 inches; full size with no scaling; and viewed at arm's length (24 inches). If viewed on a computer monitor, the document should be viewed on a 24 inch monitor and scaled to 100 percent in Adobe Acrobat at arm's length (24 inches).*

## **KOP-MV02 | Aquinnah Cultural Center | Beacon Wind Project**

Baseline Conditions

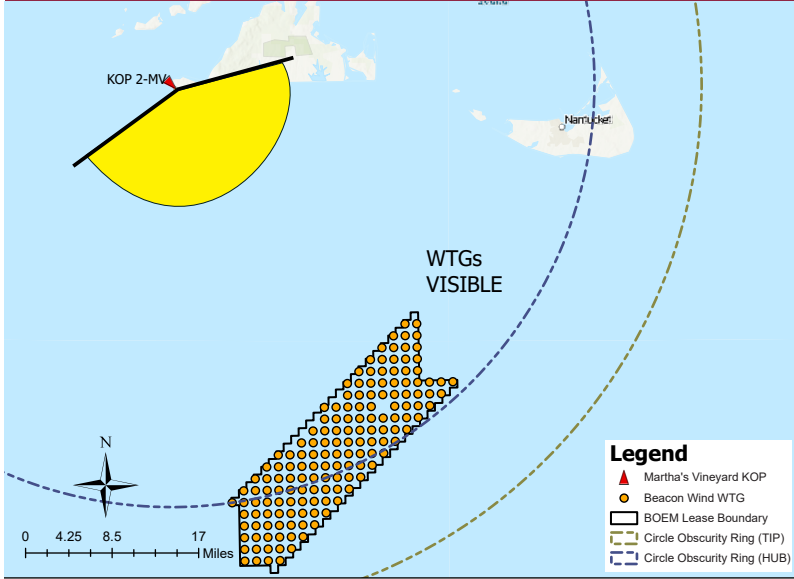


Panoramic Photograph



The sheet should be viewed on a 24 inch monitor scaling the red square to 11" x 17". To view the area outside of the red square, pan the surrounding panoramic image maintaining the 11" x 17" size within the red square.

Simulated Conditions

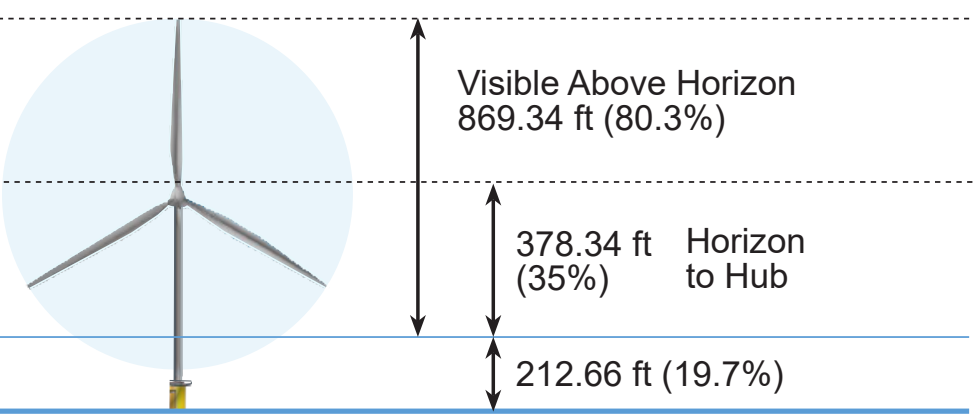


Tip of Blade  
1,082 ft

Hub  
591ft

Approximate Horizon

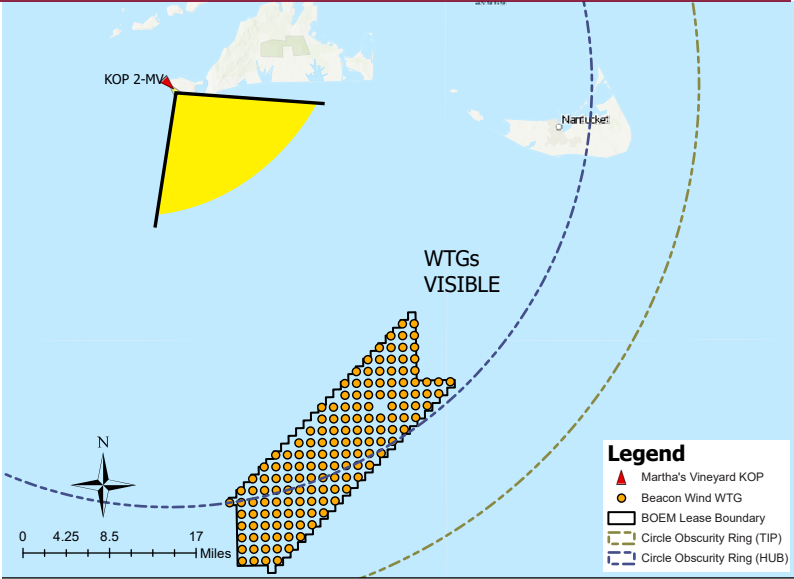
Sea Level



Simulated Conditions Turbine Data

Turbine Data	
Closest Visible WTG	32.93 miles
Furthest Visible WTG	48.05 miles
Structures Potentially Visible	155
Structures Potentially Not Visible	0

Simulated Conditions



Viewing angle depicted above reflects the cropped view shown on the following page

KOP-MV02 | Aquinnah Cultural Center | Beacon Wind Project

Simulated Conditions Overview



## BEACON WIND PROJECT

Time of Day: Afternoon  
Weather Condition: Hazy  
Image: Pre-Project Construction

*The sheet should be printed at 11 x 17 inches; full size with no scaling; and viewed at arm's length (24 inches). If viewed on a computer monitor, the document should be viewed on a 24 inch monitor and scaled to 100 percent in Adobe Acrobat at arm's length (24 inches).*

## KOP-MV02 | Aquinnah Cultural Center | Beacon Wind Project

Simulated Conditions

Number of WTG shown: 155

Number of WTG out of picture: 0