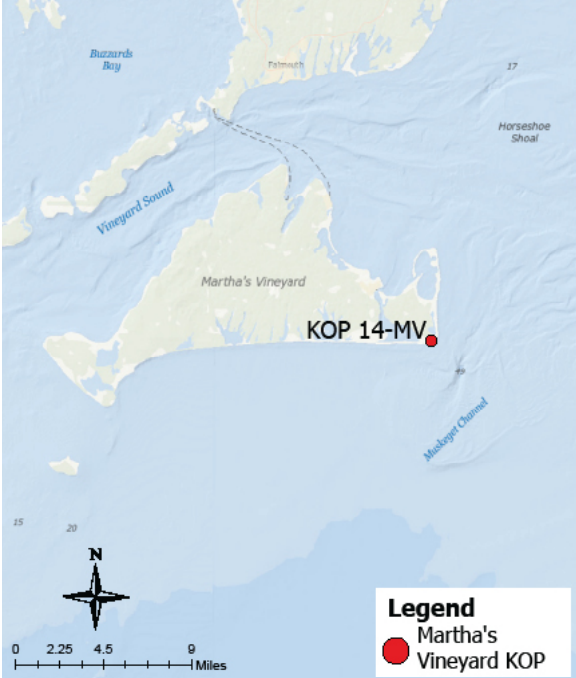


Panoramic Photograph



The sheet should be viewed on a 24 inch monitor scaling the red square to 11" x 17". To view the area outside of the red square, pan the surrounding panoramic image maintaining the 11" x 17" size within the red square.

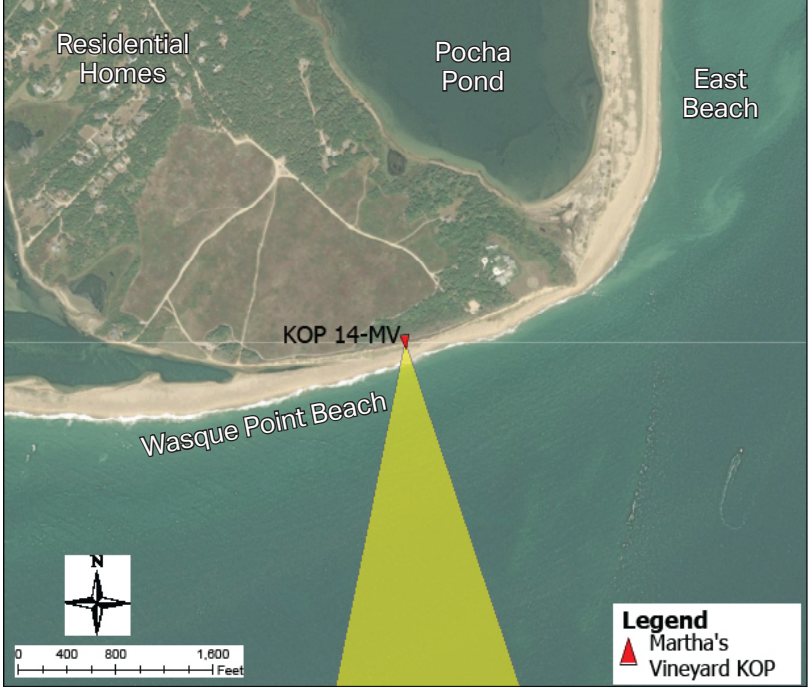
Baseline Conditions Map



Photograph Information

Location		Project View	
Viewpoint Location		Horizontal Field of View	147.2°
Date of Photograph	6/18/21	Horizontal FOV Occupied	29.8°
Seascape/Landscape Character Area	Coastal Bluff	Vertical Field of View	39.6
Time of Photograph	10:14 am	Viewing Direction	188°
Latitude	41°21'4.36"N	Elevation+Tripod Height:	27.5 Feet
Longitude	70°27'21.67"W	Camera Settings:	
Environment		Camera Model	Nikon D4
Temperature	74°F	fstop	f/14
Percent Humidity	55%	ISO	720
Wind Direction & Speed	SW 3 mph	Shutter (seconds)	1/3200
Weather Condition	Clear		
Tidal Height	Low		
Sun Angle	Side-Lit		
Sun Elevation	54.19°		

Context Map



Access
Trustees of Reservation Property
Adjacent Amenities
Trustees of Reservation entry kiosk
Adjacent SLCAs
Ocean beach, open ocean, coastal scrub bush, coastal dunes, bays and ponds, low density residential structures
Adjacent KOPs
MV13 Wasque Point Beach, MV15 Wasque Avenue Entry Kiosk

KOP-MV14 | Wasque Point Trail Reservation | Beacon Wind Project

Baseline Conditions Overview



Time of Day: Morning
Weather Condition: Clear
Image: Pre-Project Construction

The sheet should be printed at 11 x 17 inches; full size with no scaling; and viewed at arm's length (24 inches). If viewed on a computer monitor, the document should be viewed on a 24 inch monitor and scaled to 100 percent in Adobe Acrobat at arm's length (24 inches).

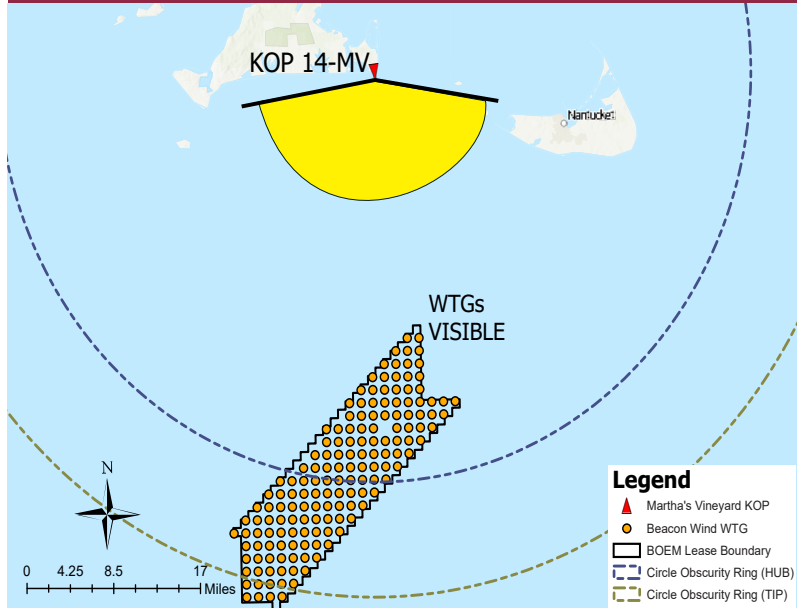
KOP-MV14 | Wasque Point Trail Reservation | Beacon Wind Project
Baseline Conditions

Panoramic Photograph



The sheet should be viewed on a 24 inch monitor scaling the red square to 11" x 17". To view the area outside of the red square, pan the surrounding panoramic image maintaining the 11" x 17" size within the red square.

Simulated Conditions

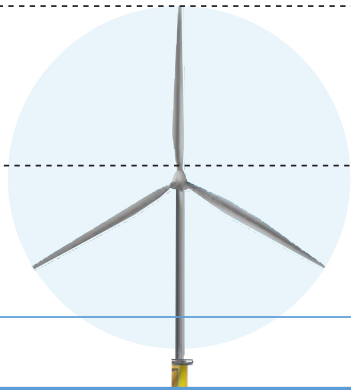


Tip of Blade
1,082 ft

Hub
591 ft

Approximate Horizon

Sea Level



Visible Above Horizon
870.08 ft (80.4%)

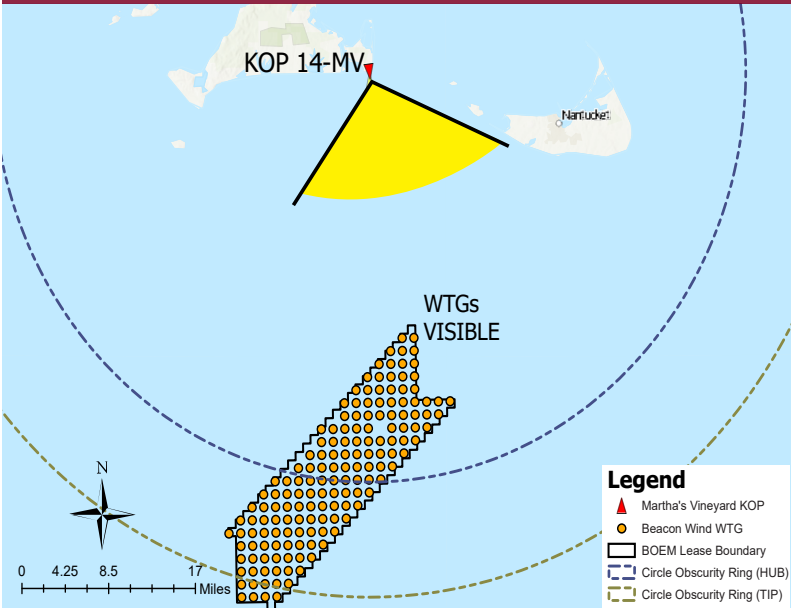
379.08 ft (35%)
Horizon to Hub

211.92 ft (19.6%)

Simulated Conditions Turbine Data

Turbine Data	
Closest Visible WTG	24.13 miles
Furthest Visible WTG	48.81 miles
Structures Potentially Visible	145
Structures Potentially Not Visible	10

Simulated Conditions



Viewing angle depicted above reflects the cropped view shown on the following page

KOP-MV14 | Wasque Point Trail Reservation | Beacon Wind Project

Simulated Conditions Overview

BEACON WIND PROJECT

Time of Day: Morning
Weather Condition: Clear
Image: Pre-Project Construction

The sheet should be printed at 11 x 17 inches; full size with no scaling; and viewed at arm's length (24 inches). If viewed on a computer monitor, the document should be viewed on a 24 inch monitor and scaled to 100 percent in Adobe Acrobat at arm's length (24 inches).

KOP-MV14 | Wasque Point Trail Reservation | Beacon Wind Project

Simulated Conditions

Number of WTG shown: 145
Number of WTG out of picture: 10