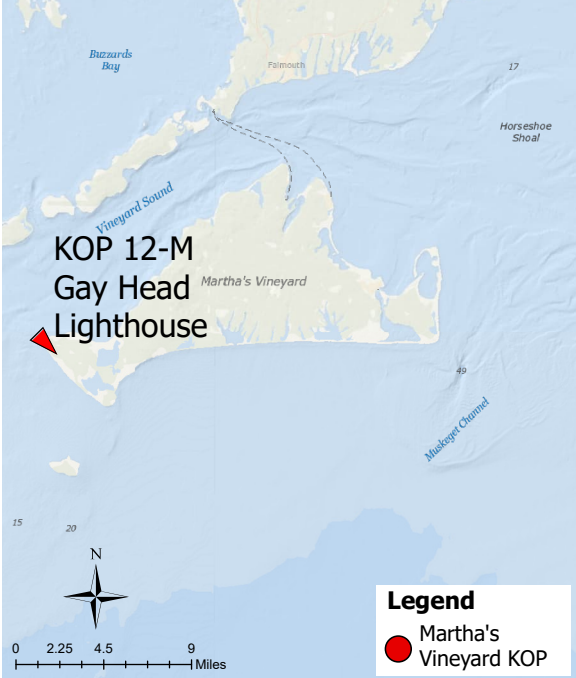


Panoramic Photograph



The sheet should be viewed on a 24 inch monitor scaling the red square to 11" x 17". To view the area outside of the red square, pan the surrounding panoramic image maintaining the 11" x 17" size within the red square.

Baseline Conditions Map



Photograph Information

Location	
Viewpoint Location	Gay Head Lighthouse
Date of Photograph	3/3/22
Seascape/Landscape Character Area	Agricultural/Open Fields
Time of Photograph	2:00 pm
Latitude	41°20'54.12"N
Longitude	70°50'4.91"W
Environment	
Temperature	42°F
Percent Humidity	40%
Wind Direction & Speed	NW 14 mph
Weather Condition	Partly Cloudy
Tidal Height	Low
Sun Angle	Side-Lit
Sun Elevation	34.1°

Project View	
Horizontal Field of View	95.6°
Horizontal FOV Occupied	45°
Vertical Field of View	39.6°
Viewing Direction	136°
Elevation+Tripod Height:	135.5 Feet
Camera Settings:	
Camera Model	Nikon D750
fstop	f/11
ISO	200
Shutter (seconds)	1/500

Context Map



Access
Public recreation
Adjacent Amenities
Gift shops, restaurants, cultural center, restroom facilities, paved roads and parking areas, hotels/inns
Adjacent SLCAs
Coastal bluffs, agricultural/open fields, forested woodlands, coastal scrub shrub, low density residential structures
Adjacent KOPs
KOP-MV01 Aquinnah Cliffs Overlook, KOP-MV02 Aquinnah Cultural Center

KOP-MV12 | Gay Head Lighthouse | Beacon Wind Project

Baseline Conditions Overview



Time of Day: Afternoon
Weather Condition: Partly Cloudy
Image: Pre-Project Construction

The sheet should be printed at 11 x 17 inches; full size with no scaling; and viewed at arm's length (24 inches). If viewed on a computer monitor, the document should be viewed on a 24 inch monitor and scaled to 100 percent in Adobe Acrobat at arm's length (24 inches).

KOP-MV12 | Gay Head Lighthouse | Beacon Wind Project

Baseline Conditions

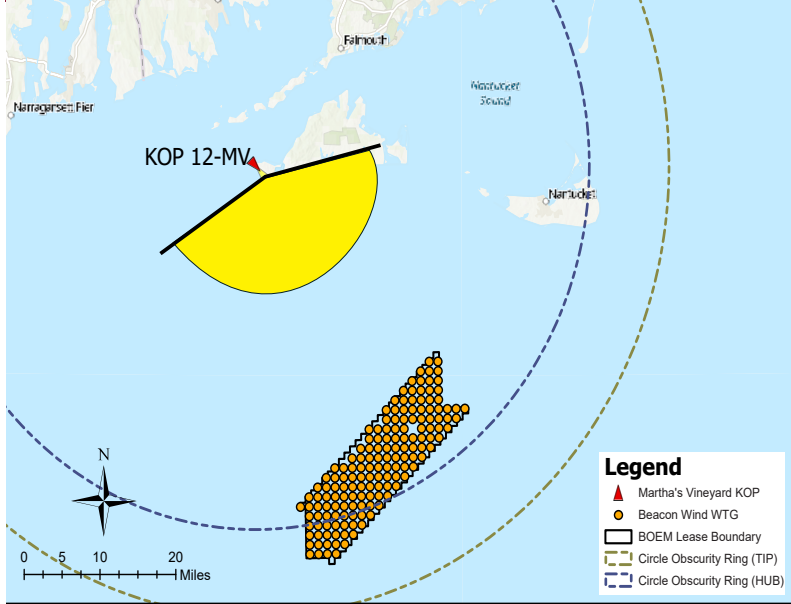
Panoramic Photograph



BEACON WIND PROJECT

The sheet should be viewed on a 24 inch monitor scaling the red square to 11" x 17". To view the area outside of the red square, pan the surrounding panoramic image maintaining the 11" x 17" size within the red square.

Simulated Conditions

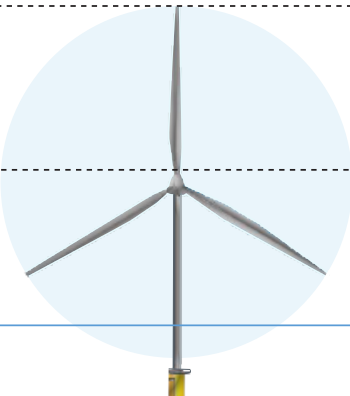


Tip of Blade
1,082 ft

Hub
591 ft

Approximate Horizon

Sea Level



Visible Above Horizon
847.16 ft (78.3%)

356.16 ft
(32.9%)

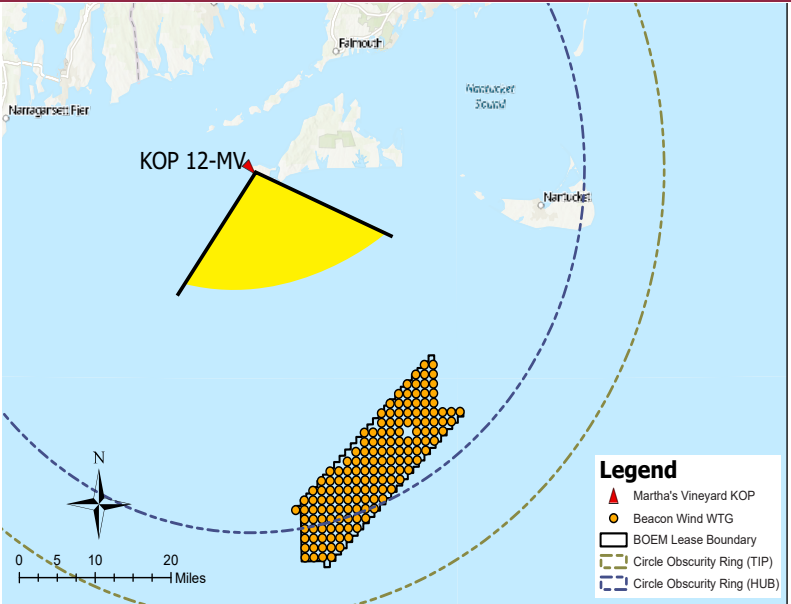
Horizon
to Hub

234.84 ft (21.7%)

Simulated Conditions Turbine Data

Turbine Data	
Closest Visible WTG	33.02 miles
Furthest Visible WTG	48.22 miles
Structures Potentially Visible	155
Structures Potentially Not Visible	0

Simulated Conditions



Viewing angle depicted above reflects the cropped view shown on the following page

KOP-MV12 | Gay Head Lighthouse | Beacon Wind Project

Simulated Conditions Overview



BEACON WIND PROJECT

Time of Day: Afternoon
Weather Condition: Partly Cloudy
Image: Pre-Project Construction

The sheet should be printed at 11 x 17 inches; full size with no scaling; and viewed at arm's length (24 inches). If viewed on a computer monitor, the document should be viewed on a 24 inch monitor and scaled to 100 percent in Adobe Acrobat at arm's length (24 inches).

KOP-MV12 | Gay Head Lighthouse | Beacon Wind Project

Simulated Conditions

Number of WTG shown: 155
Number of WTG out of picture: 0