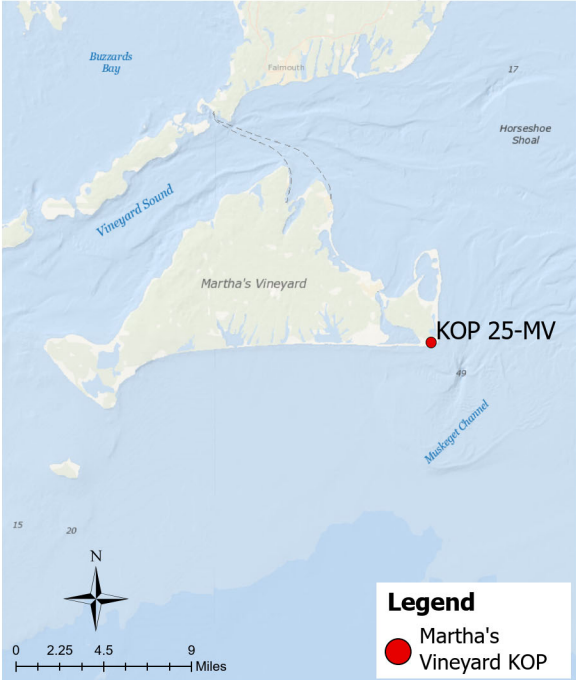


Panoramic Photograph



The sheet should be viewed on a 24 inch monitor scaling the red square to 11fl x 17fl. To view the area outside of the red square, pan the surrounding panoramic image maintaining the 11fl x 17fl size within the red square.

Baseline Conditions Map

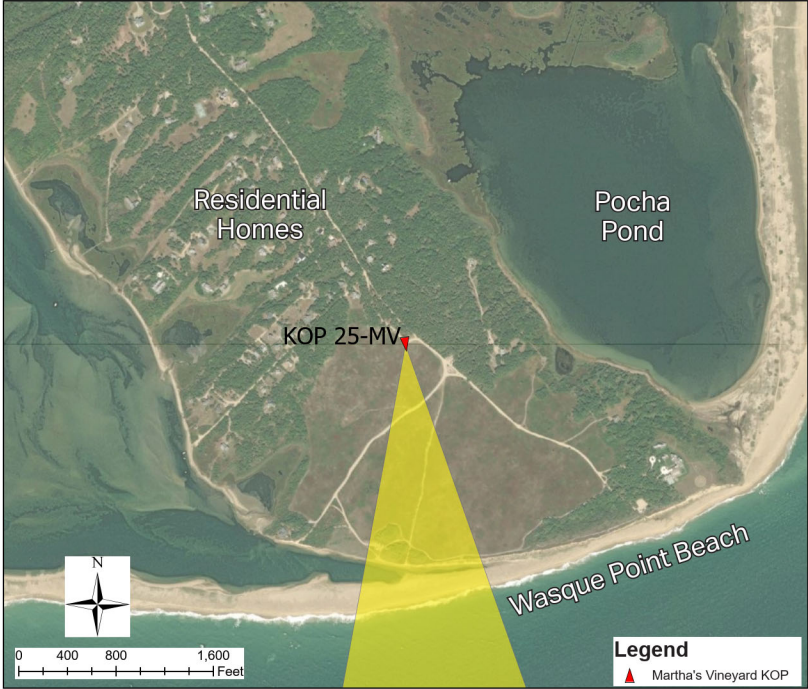


Photograph Information

Location	
Viewpoint Location	Wasque Ave Entry Kiosk
Date of Photograph	3/3/2022
Seascape/Landscape Character Area	Coastal Scrub Bush
Time of Photograph	6:45 pm
Latitude	41°21'20.38"N
Longitude	70°27'39.74"W
Environment	
Temperature	38°F
Percent Humidity	39%
Wind Direction & Speed	NW 16 mph
Weather Condition	Partly cloudy, stars
Tidal Height	Low
Sun Angle	None
Sun Elevation	-8.28°

Project View	
Horizontal Field of View	147.2°
Horizontal FOV Occupied	33.9°
Vertical Field of View	39.6°
Viewing Direction	188°
Elevation+Tripod Height:	42.5 Feet
Camera Settings:	
Camera Model	Nikon D750
fstop	f/1.4
ISO	3200
Shutter (seconds)	1/60

Context Map



Access
Trustees of Reservation Property
Adjacent Amenities
Trustees of Reservation entry kiosk
Adjacent SLCA's
Ocean beach, open ocean, coastal Scrub bush, coastal dunes, bays and ponds, low density residential structures
Adjacent KOPs
MV13 Wasque Point Beach, MV14 Wasque Point Trail Reservation, MV18 Quamox Road

KOP-MV25 | Wasque Avenue Entry Kiosk at Night | Beacon Wind Project

Baseline Conditions Overview



Time of Day: Evening
Weather Condition: Partly Cloudy
Image: Pre-Project Construction

The sheet should be printed at 11 x 17 inches; full size with no scaling; and viewed at arm's length (24 inches). If viewed on a computer monitor, the document should be viewed on a 24 inch monitor and scaled to 100 percent in Adobe Acrobat at arm's length (24 inches).

KOP-MV25 | Wasque Avenue Entry Kiosk at Night | Beacon Wind Project

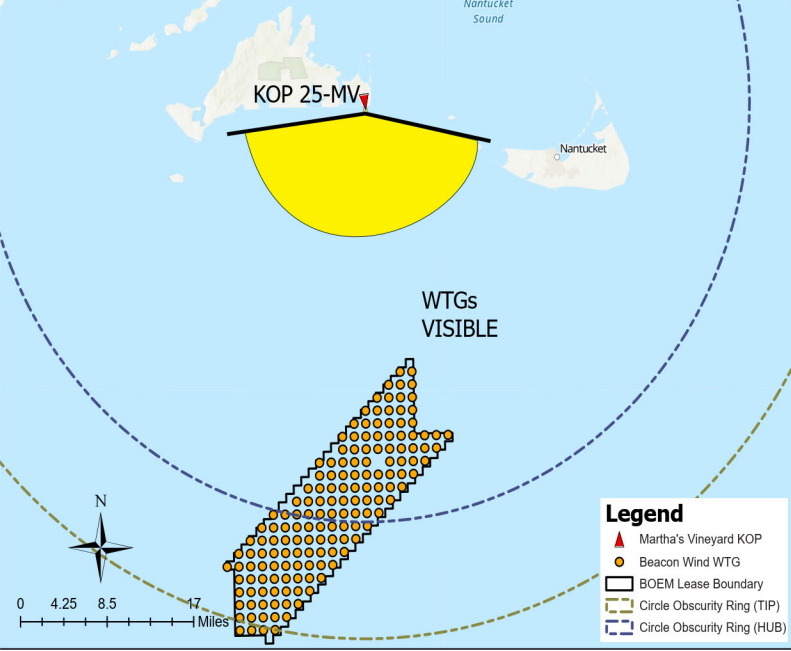
Baseline Conditions

Panoramic Photograph



The sheet should be viewed on a 24 inch monitor scaling the red square to 11" x 17". To view the area outside of the red square, pan the surrounding panoramic image maintaining the 11" x 17" size within the red square.

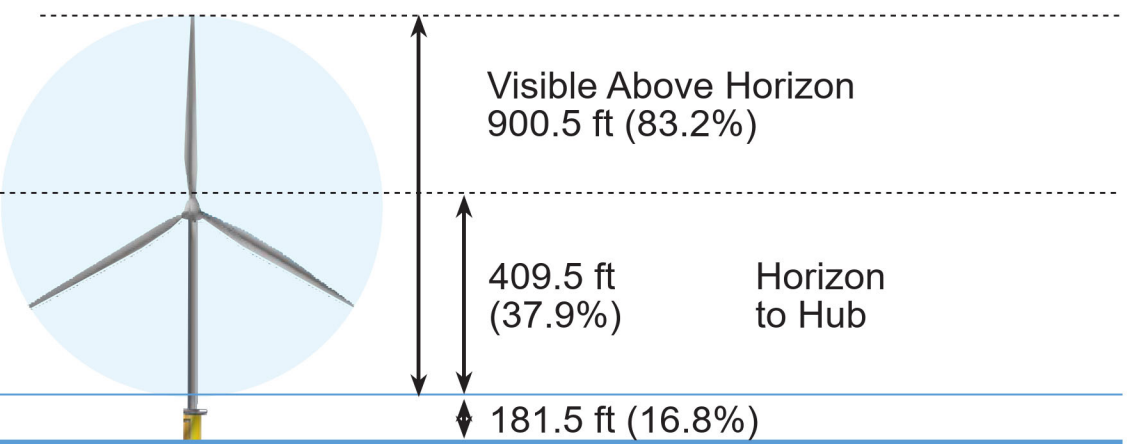
Simulated Conditions



Tip of Blade
1,082 ft

Hub
591 ft

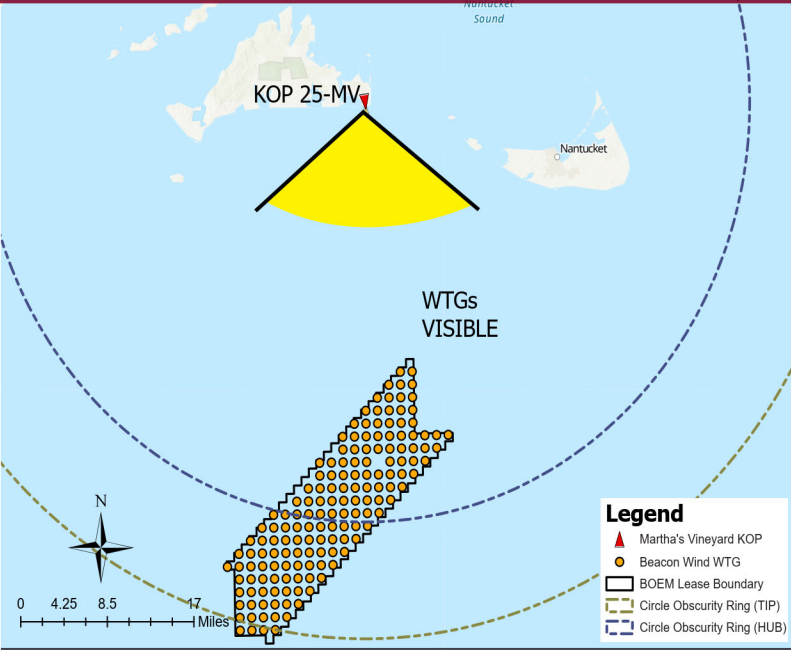
Approximate
Horizon
Sea Level



Simulated Conditions Turbine Data

Turbine Data	
Closest Visible WTG	24.5 miles
Furthest Visible WTG	49.1 miles
Structures Potentially Visible	151
Structures Potentially Not Visible	4

Simulated Conditions



Viewing angle depicted above reflects the cropped view shown on the following page

KOP-MV25 | Wasque Avenue Entry Kiosk at Night | Beacon Wind Project

Simulated Conditions Overview



BEACON WIND PROJECT

Time of Day: Evening
Weather Condition: Partly Cloudy
Image: Pre-Project Construction

The sheet should be printed at 11 x 17 inches; full size with no scaling; and viewed at arm™s length (24 inches). If viewed on a computer monitor, the document should be viewed on a 24 inch monitor and scaled to 100 percent in Adobe Acrobat at arm™s length (24 inches).

KOP-MV25 | Wasque Avenue Entry Kiosk at Night | Beacon Wind Project
Simulated Conditions

Number of WTG shown: 151
Number of WTG out of picture: 4