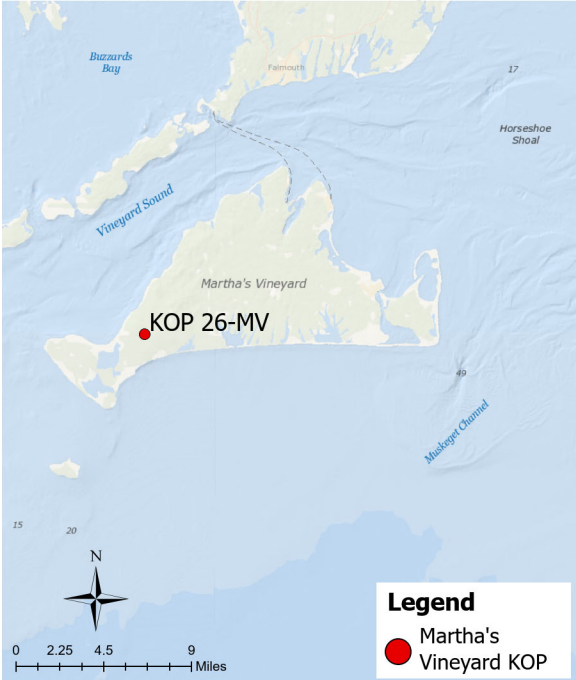


Panoramic Photograph



The sheet should be viewed on a 24 inch monitor scaling the red square to 11fl x 17fl. To view the area outside of the red square, pan the surrounding panoramic image maintaining the 11fl x 17fl size within the red square.

Baseline Conditions Map

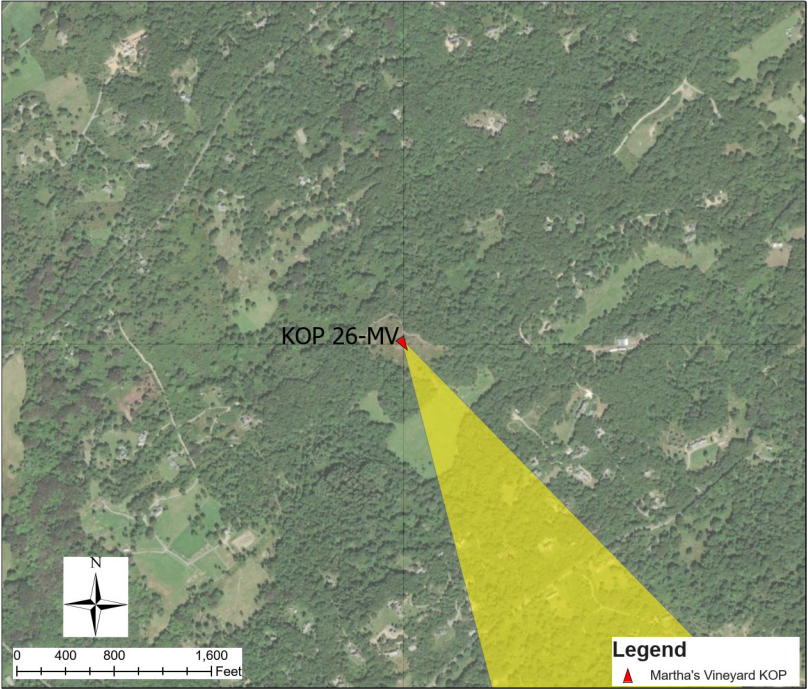


Photograph Information

Location	
Viewpoint Location	Peaked Hill
Date of Photograph	3/3/2022
Seascape/Landscape Character Area	Forests/Woodlands and Low Density Rural Settlement
Time of Photograph	12:10 pm
Latitude	41°25.24.95"N
Longitude	70°44'18.00"W
Environment	
Temperature	42°F
Percent Humidity	43%
Wind Direction & Speed	NW 18 mph
Weather Condition	Hazy
Tidal Height	High-Mid
Sun Angle	Back-lit
Sun Elevation	41.9°

Project View	
Horizontal Field of View	147.2°
Horizontal FOV Occupied	31.3°
Vertical Field of View	39.6°
Viewing Direction	144°
Elevation+Tripod Height:	306.5 Feet
Camera Settings:	
Camera Model	Nikon D750
fstop	f/10
ISO	200
Shutter (seconds)	1/400

Context Map



Access
Public recreation hiking trails
Adjacent Amenities
Radio tower
Adjacent SLCAs
Forests/woodlands, low density rural settlement, salt ponds/tidal marsh, coastal scrub bush
Adjacent KOPs
KOP-MV19 Chilmark General Store

KOP-MV26 | Peaked Hill | Beacon Wind Project

Baseline Conditions Overview



Time of Day: Afternoon
Weather Condition: Hazy
Image: Pre-Project Construction

The sheet should be printed at 11 x 17 inches; full size with no scaling; and viewed at arm™s length (24 inches). If viewed on a computer monitor, the document should be viewed on a 24 inch monitor and scaled to 100 percent in Adobe Acrobat at arm™s length (24 inches).

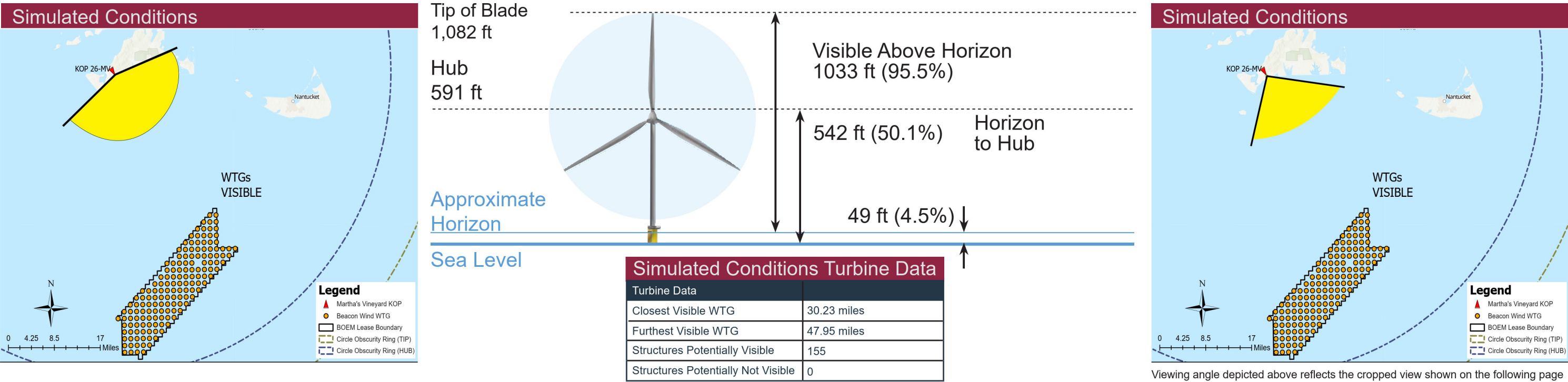
KOP-MV26 | Peaked Hill | Beacon Wind Project

Baseline Conditions

Panoramic Photograph



The sheet should be viewed on a 24 inch monitor scaling the red square to 11" x 17". To view the area outside of the red square, pan the surrounding panoramic image maintaining the 11" x 17" size within the red square.



Viewing angle depicted above reflects the cropped view shown on the following page

KOP-MV26 | Peaked Hill | Beacon Wind Project

Simulated Conditions Overview

BEACON WIND PROJECT

Time of Day: Afternoon
Weather Condition: Hazy
Image: Pre-Project Construction

The sheet should be printed at 11 x 17 inches; full size with no scaling; and viewed at arm™s length (24 inches). If viewed on a computer monitor, the document should be viewed on a 24 inch monitor and scaled to 100 percent in Adobe Acrobat at arm™s length (24 inches).